

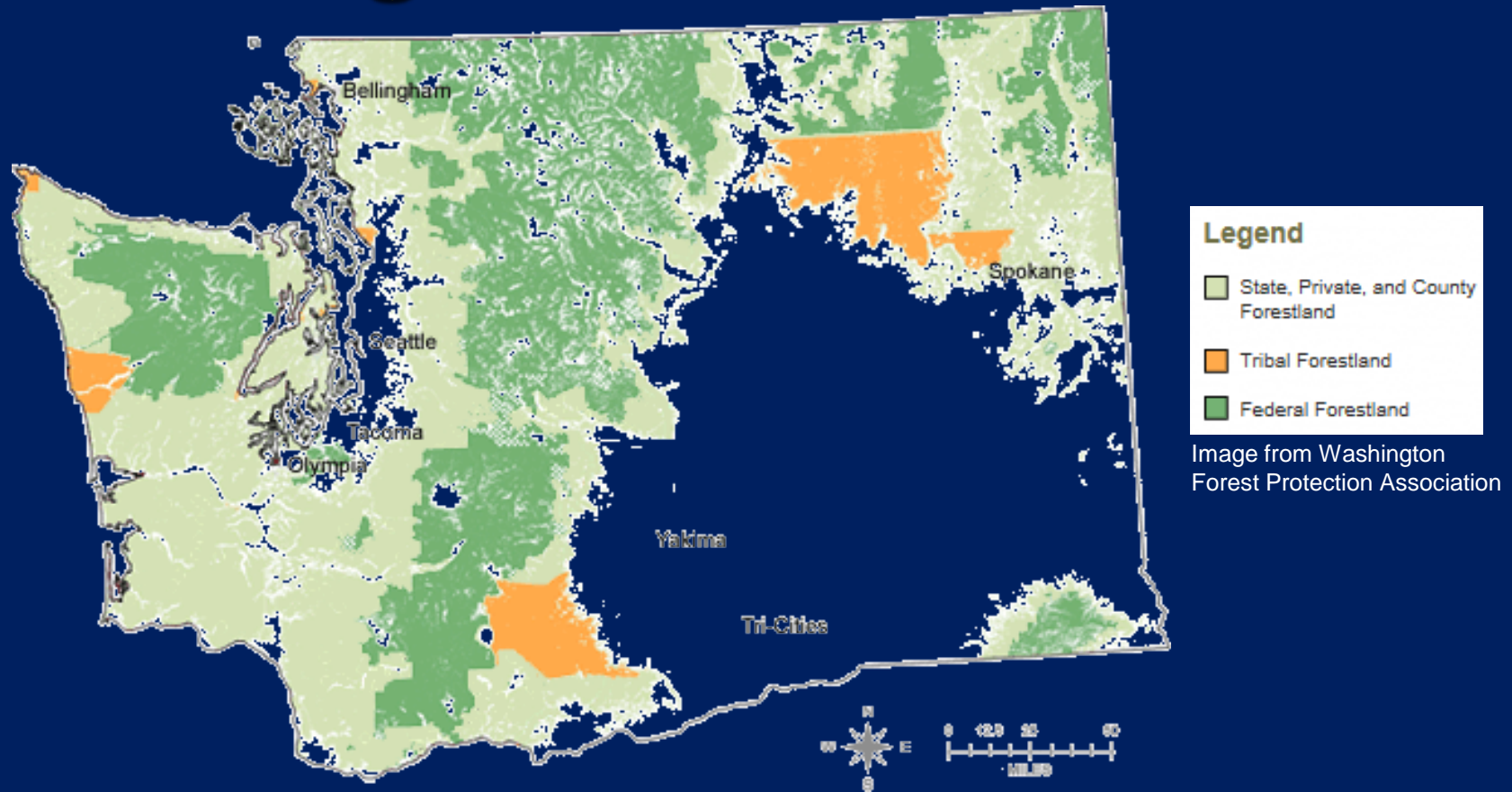
WDFW's Role in Forest Habitat Protection

David Whipple, Habitat Program Forest Policy Coordinator
Terry Jackson, Habitat Program Forest Habitats Section Manager

Presentation Outline

- ◉ Washington's forest habitat
- ◉ History & framework of forest conservation
- ◉ What we do
 - Aquatic Resources
 - Terrestrial Resources

Washington's Forest Habitat



- Over half of the state is forested (22 million acres)
- 10.5 million acres is non-federal

Forest Habitat Conservation

- Over 50 Federal/State listed & candidate species
- Over 50 Species sensitive to forest management
- Over 25 Game species



History & Framework of Forest Habitat Conservation

Historic Milestones

- Forest Practices Act; 1974
- Timber, Fish & Wildlife Agreement (TFW); 1987
- Forests & Fish (aquatic resources)
 - F&F Law (HB2091); 1999
 - *Provided WDFW a seat on Forest Practices Board*
 - F&F Forest Practices Rules; 1999, 2001
 - Forests & Fish HCP; 2005
- Forest Practices Board's Wildlife Work Plan; 2003
(upland wildlife)

Partners & Stakeholders (TFW)

- ◉ WDFW
- ◉ DNR
- ◉ Ecology
- ◉ Federal Government Entities
- ◉ Industrial and Small Forest Landowners
- ◉ County Governments
- ◉ Tribes
- ◉ Conservation Caucus

Forest Practices Board

- ◉ Established by the 1974 Forest Practices Act
- ◉ Chaired by the Commissioner of Public Lands
- ◉ 13 members representing multiple interests
- ◉ Adopts forest practices rules to protect public resources on non-federal forestland
- ◉ Endorses non-regulatory protection approaches
- ◉ Forest Practices Rules are implemented by DNR

Forest Practices Board

```
graph TD; FPB[Forest Practices Board] --> AR[Aquatic Resources]; FPB --> UW[Upland Wildlife]; AR --> FF[Forests & Fish]; UW --> SHP[Species & Habitat Protections];
```

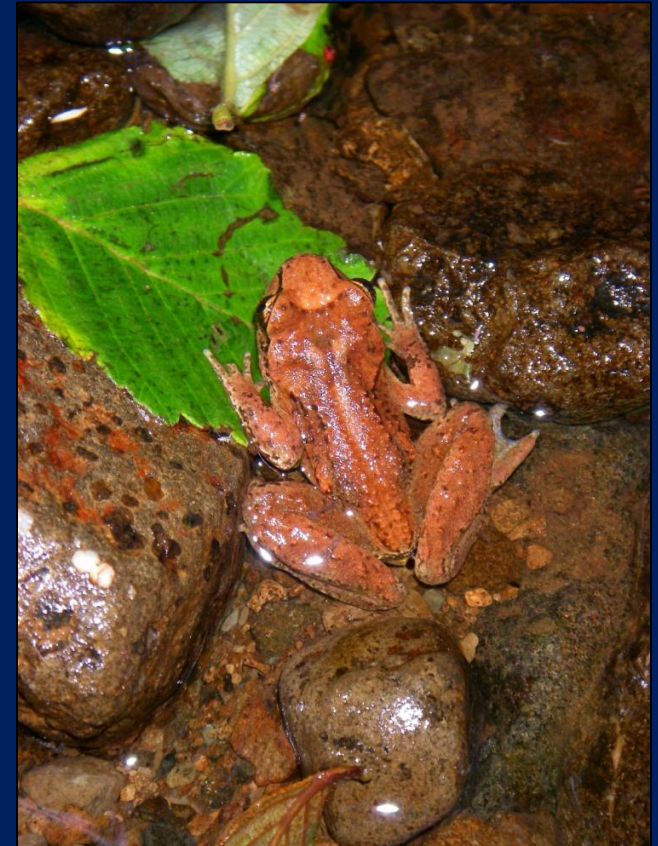
Aquatic Resources

Upland Wildlife

Forests & Fish

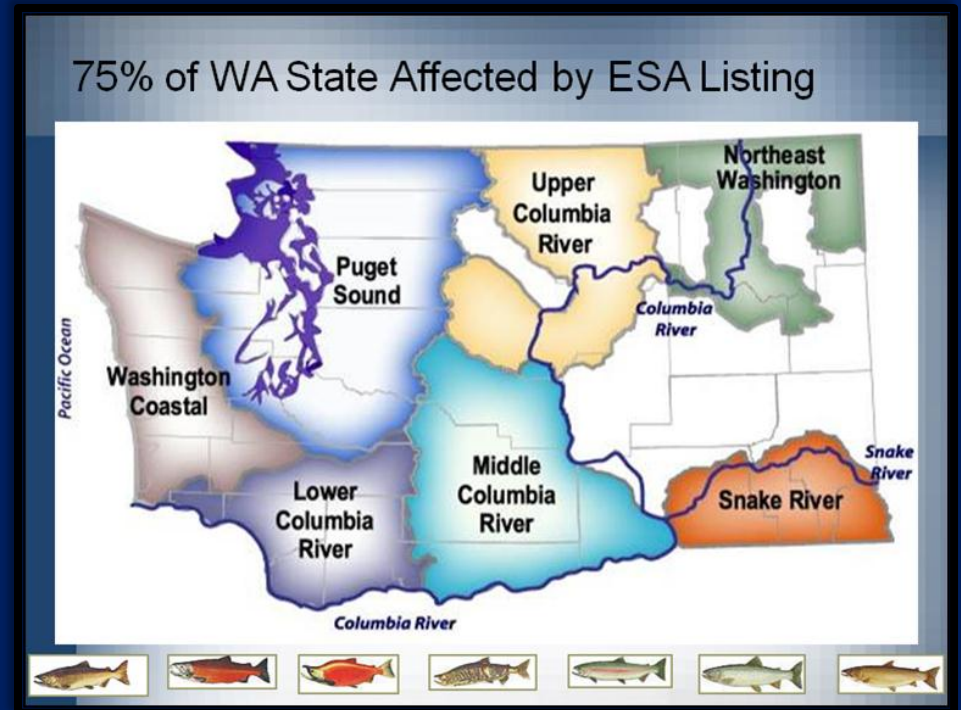
Species & Habitat Protections

Aquatic Resources Forests & Fish (F&F)



Forests & Fish Goals

- ESA assurances
- Clean Water Act assurances
- Restore & maintain harvestable levels of fish
- Maintain a viable timber industry

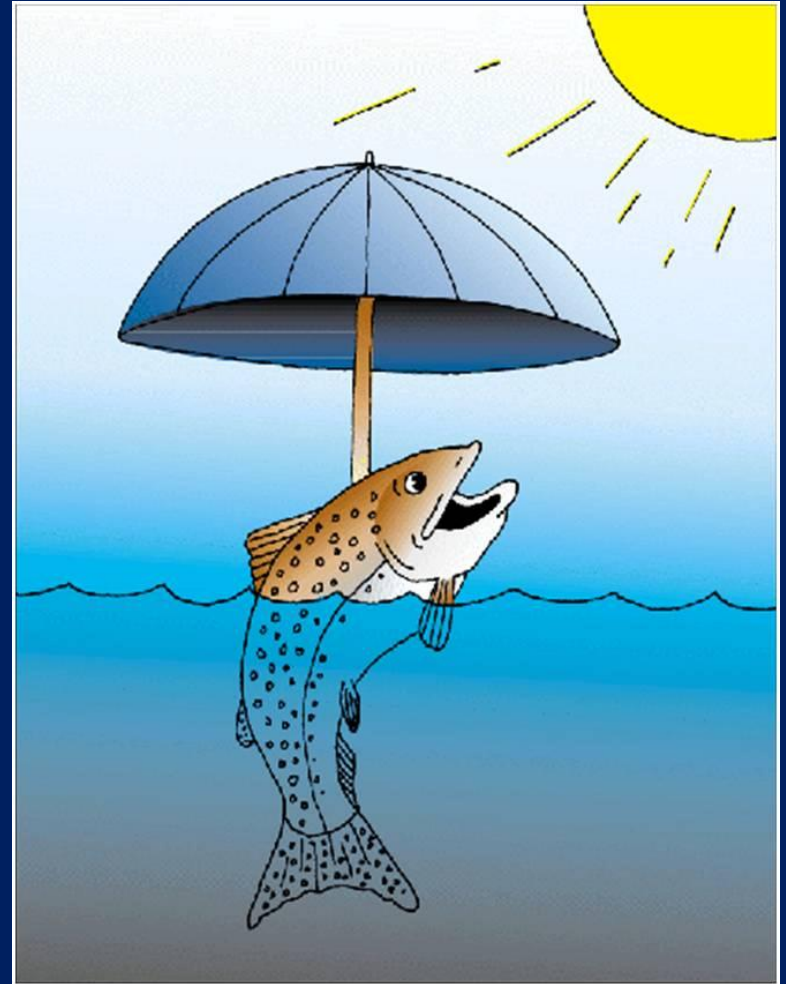


Forests Practices HCP

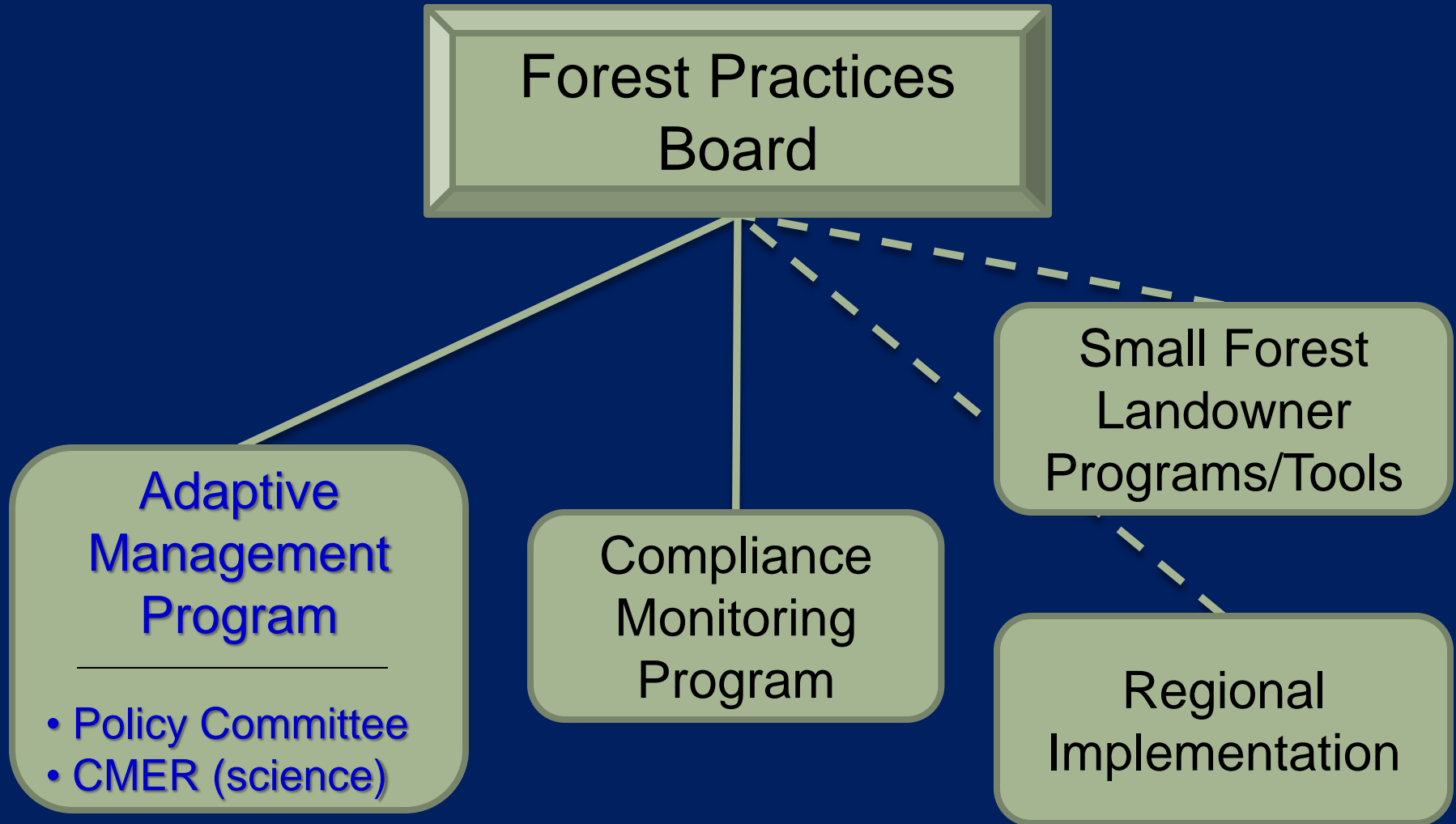
- ◉ F&F Forest Practices Rules adopted as HCP in 2006
- ◉ Largest programmatic HCP in nation
 - 10 million acres & 60,000 miles of streams
 - Covers aquatic & riparian-dependent species (all fish & 7 amphibians)
- ◉ Based on science & adaptive management

Forests & Fish Riparian Functions

- ◉ Wood recruitment
- ◉ Shade & stream temp.
- ◉ Bank stability
- ◉ Sediment filtering
- ◉ Stable slopes
- ◉ Leaf litter fall
- ◉ Nutrients



WDFW's Role in Forests & Fish

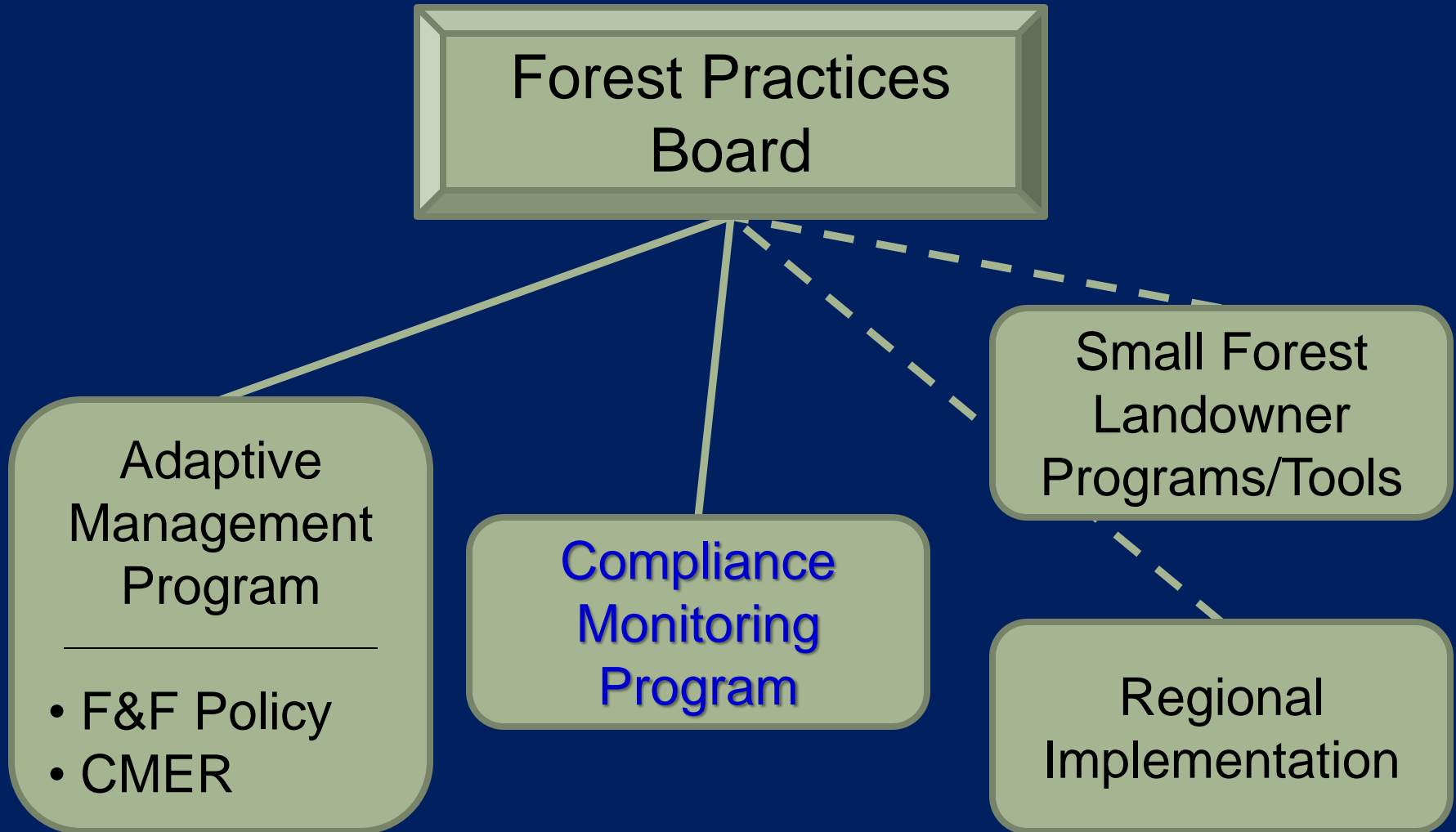


Adaptive Management Program

- ◉ Policy Committee
- ◉ Cooperative Monitoring, Evaluation and Research Committee (CMER)



WDFW's Role in Forests & Fish



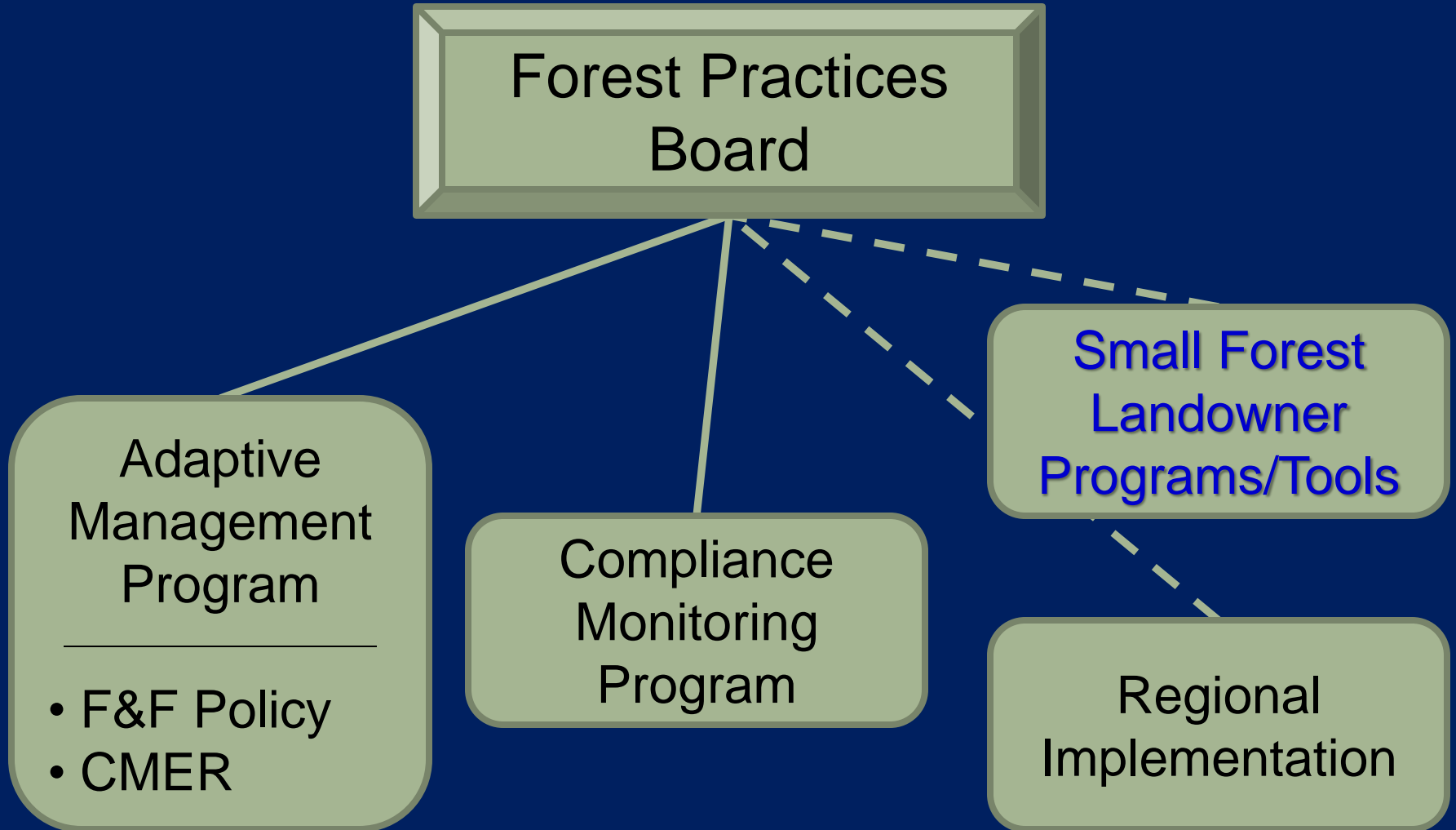
Forest Practices Compliance Monitoring Program

WDFW Habitat staff:

- Conducts field compliance statewide (multi-stakeholder team)
- Assesses where operational improvements can be made & training can occur.



WDFW's Role in Forests & Fish



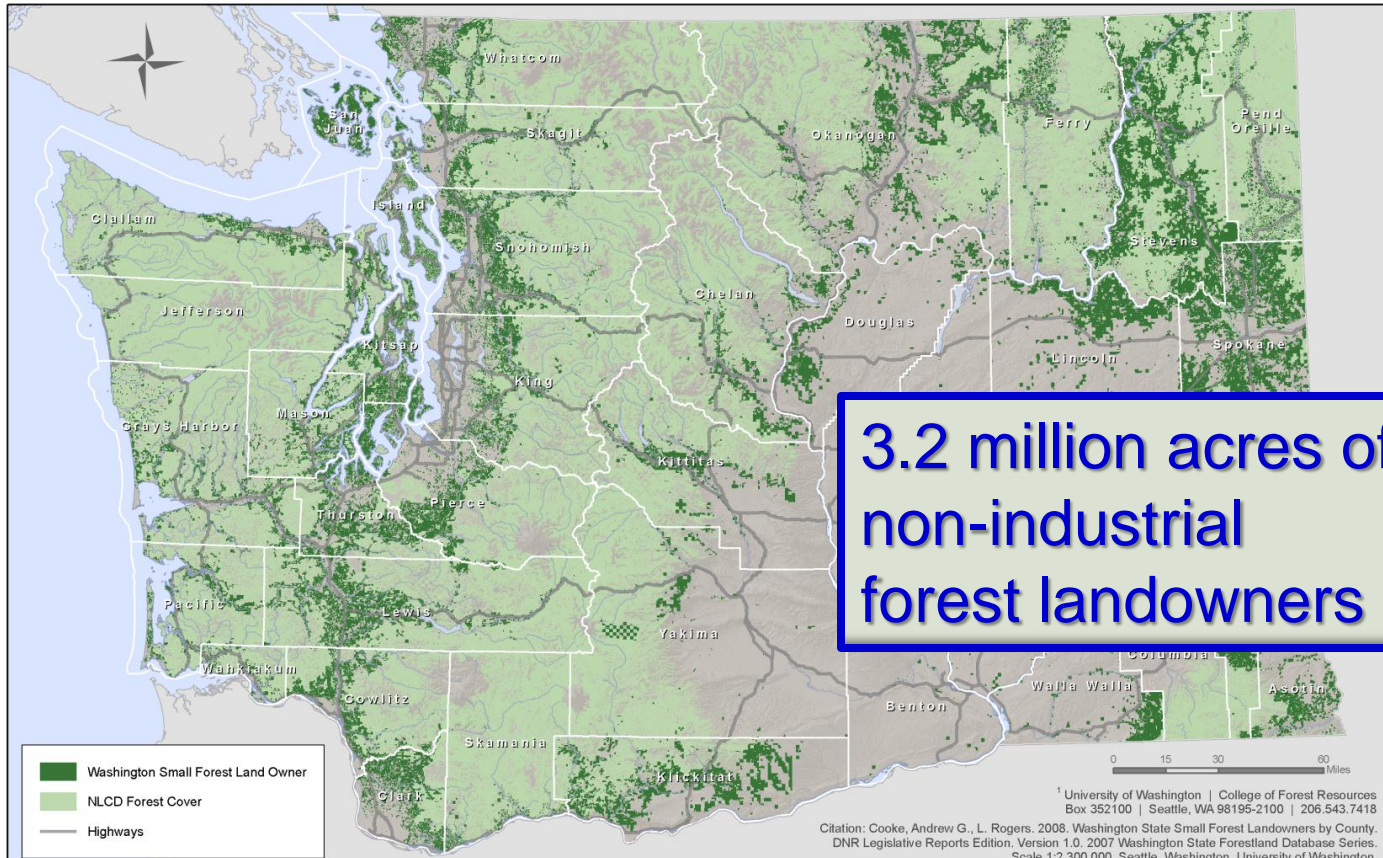
Helping Small Forest Landowners



Washington State Small Forest Landowners by County

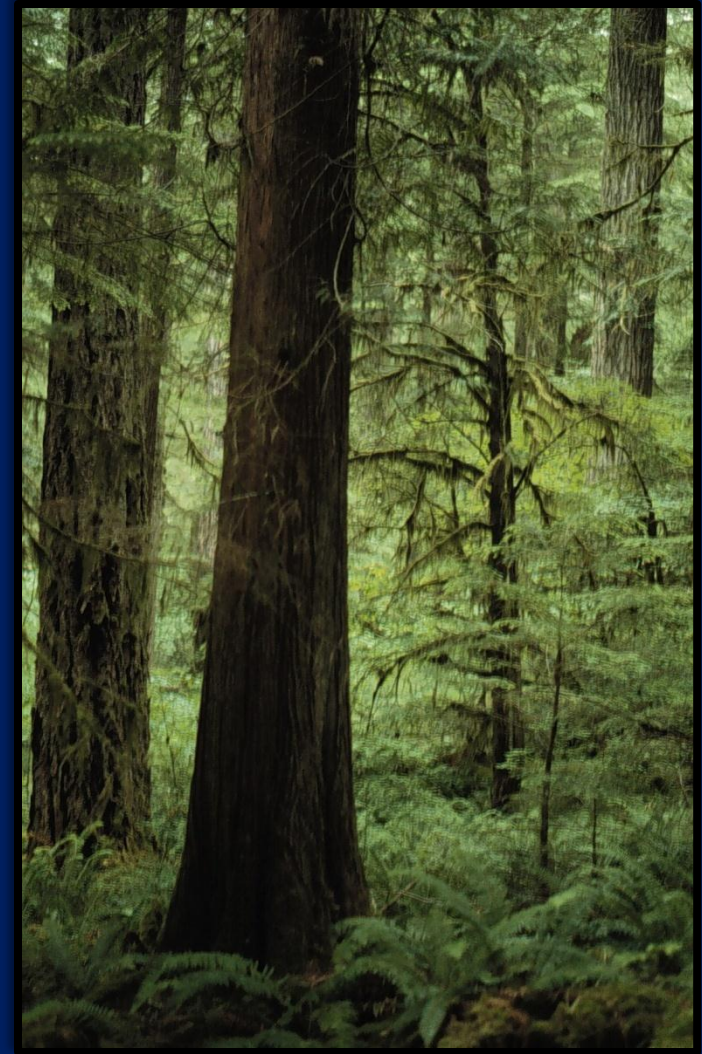
DNR Legislative Reports Edition | Version 1.0 | 2007 Washington State Forestland Database Series

Andrew Cooke¹ and Luke Rogers¹



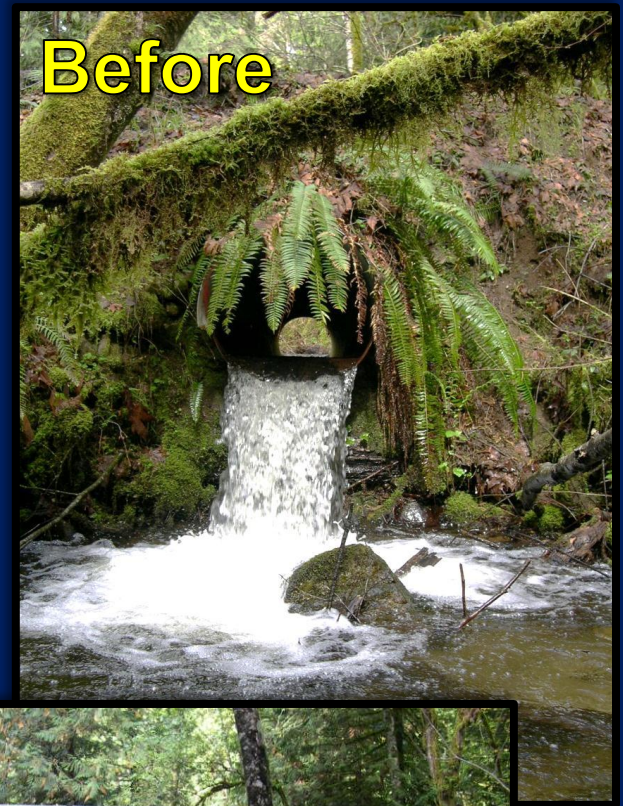
Helping Small Forest Landowners

- ◉ Disproportionally impacted by rules
- ◉ Development of alternative prescriptions
- ◉ Financial Assistance
 - Forest Riparian Easements
 - Fish Barriers

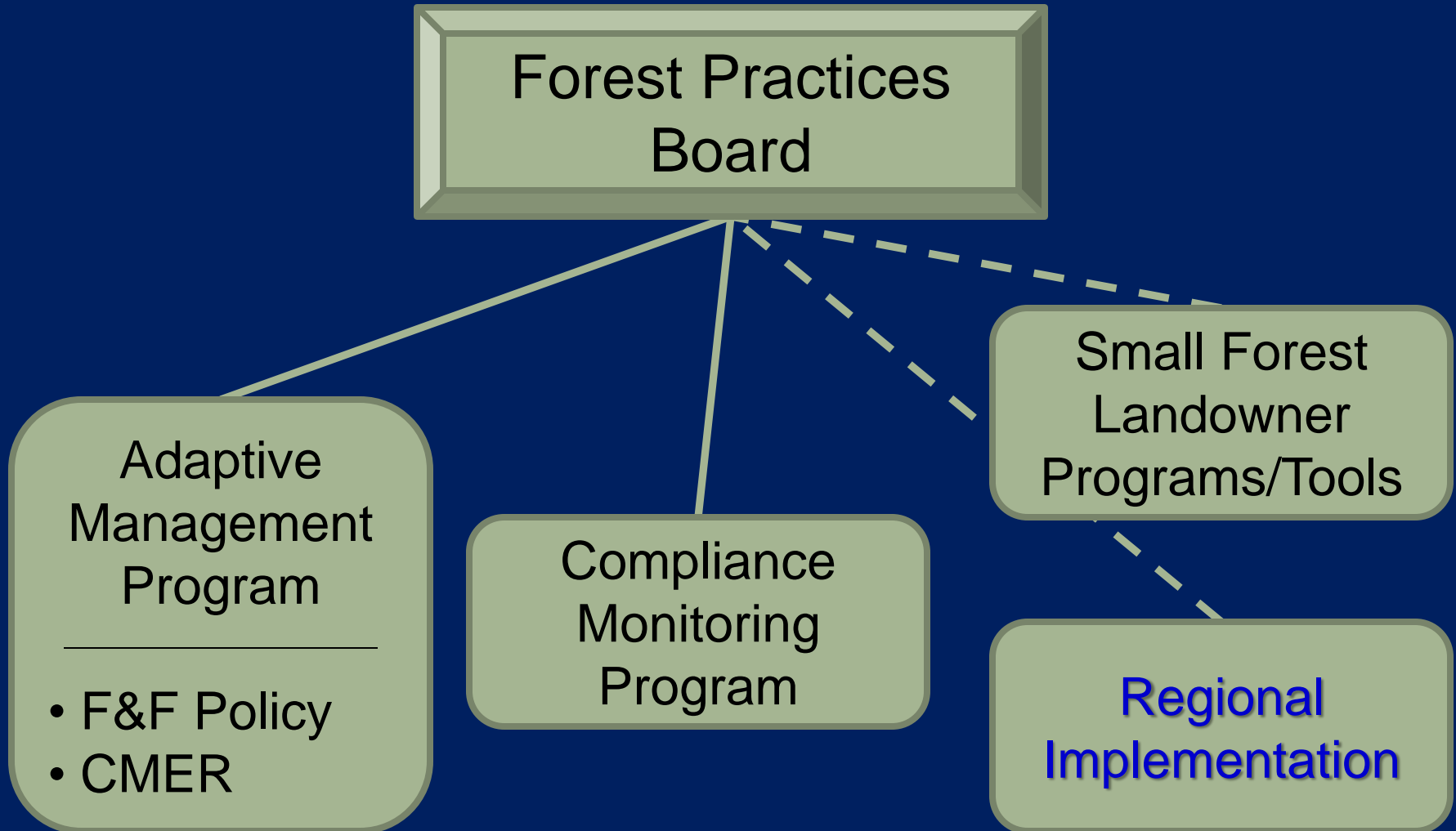


Family Forest Fish Passage Program

- ⦿ >\$19 million invested
- ⦿ > 240 fish passage barriers eliminated
- ⦿ >500 miles of fish habitat made accessible



WDFW's Role in Forests & Fish



Forests & Fish

Implementation on the Ground

◉ Regional Forest & Fish Biologists

- HPAs
- Stream Typing
- Road Maintenance and Abandonment Plans (RMAPs)
- Forest Practices Application (FPA) Review

HPA/FPA Integration

Senate Bill 6406 (2012):

Fish Protection Standards (WDFW Hydraulic Code Rules) to be integrated into forest practices rules by December 2013.

- HPAs incorporated into Forest Practices Applications (FPAs)
- Under DNR's authority



WDFW's New Role in Forest Practices Hydraulic Projects (FPHPs)

Though not issuing permits, WDFW workload will be the same or greater.

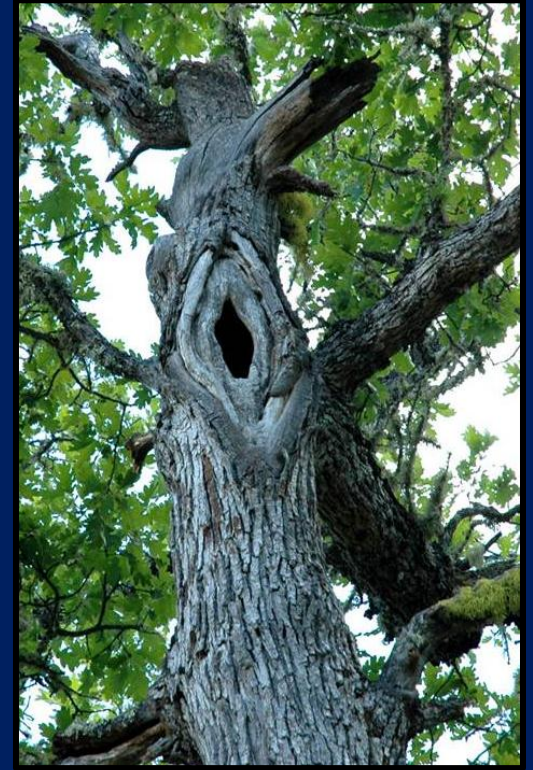


WDFW's New Role in Forest Practices Hydraulic Projects (FPHPs)

- Review and comment on FPHPs
- Work with applicants to assure projects meet fish protection standards
- Coordinate with and support DNR



Upland Wildlife Habitat Conservation



Forest Practices Board

```
graph TD; FPB[Forest Practices Board] --> AR[Aquatic Resources]; FPB --> UW[Upland Wildlife]; AR --> FF[Forests & Fish]; UW --> SHP[Species & Habitat Protections];
```

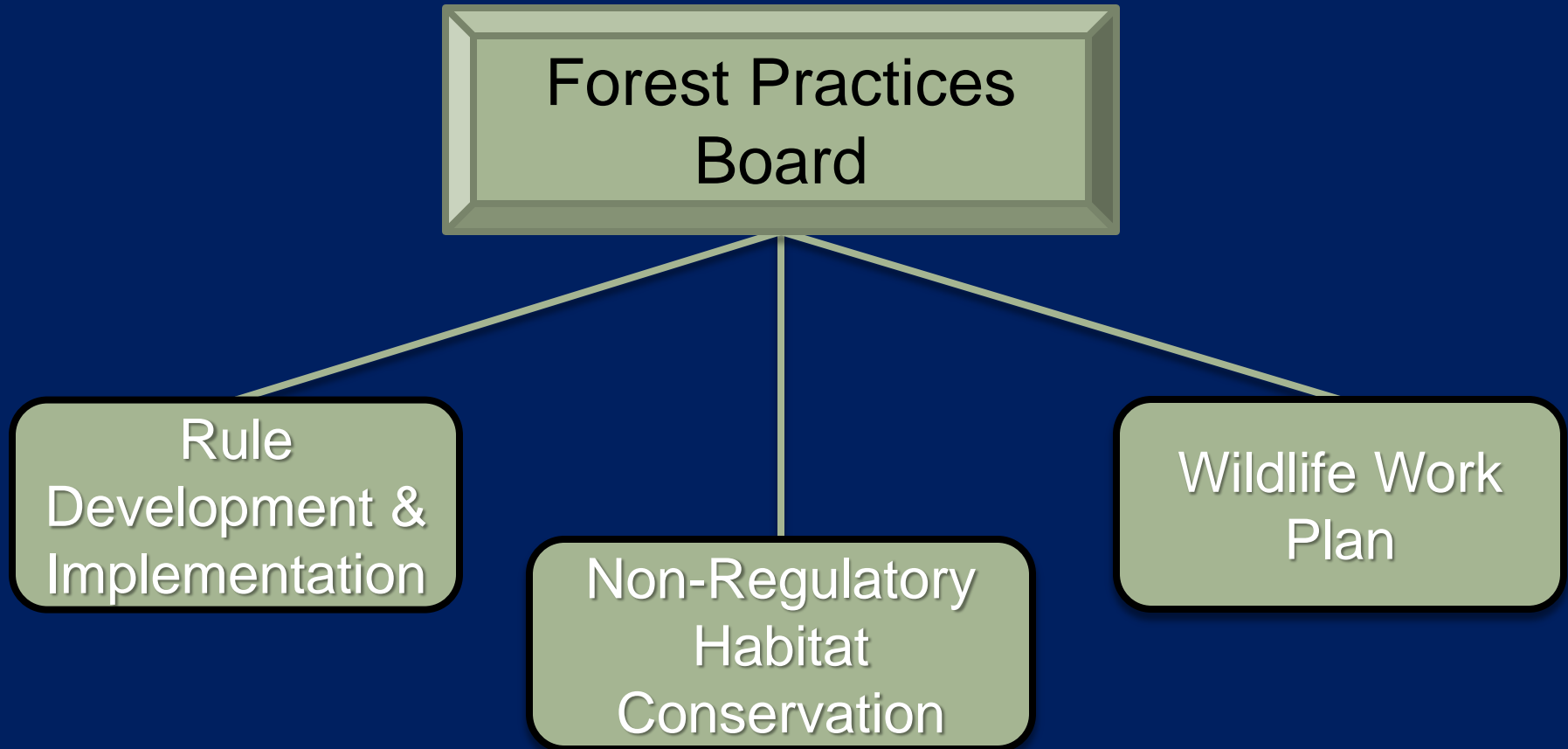
Aquatic Resources

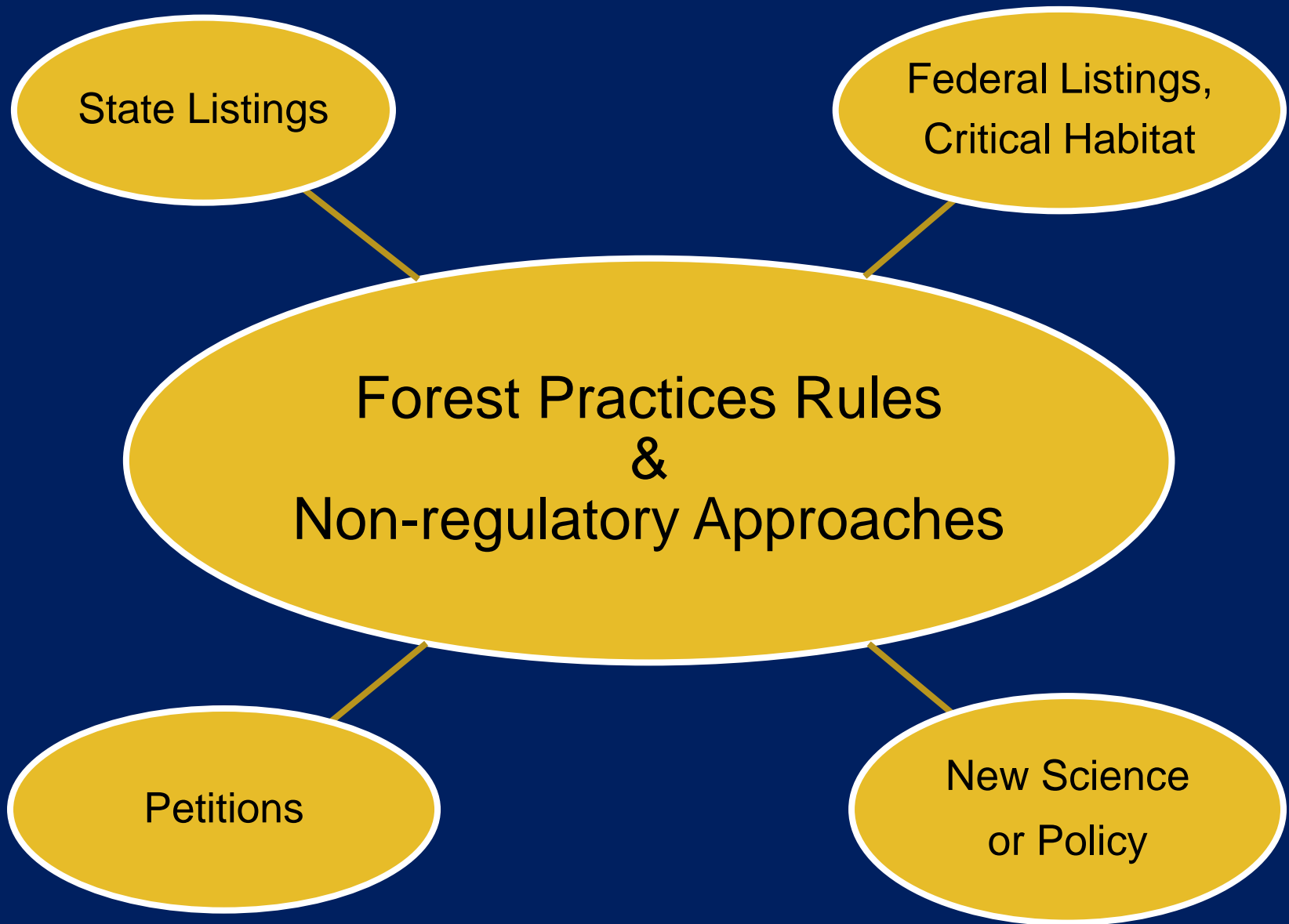
Upland Wildlife

Forests & Fish

Species & Habitat Protections

Species and Habitat Protections





Key Wildlife Protection Rules / Planning / Strategies

T&E SPECIES

- Spotted Owl
- Marbled Murrelet
- Lynx
- Taylor's Checkerspot butterfly
- Western Gray Squirrel
- Bald Eagle & Peregrine Falcon



HABITATS

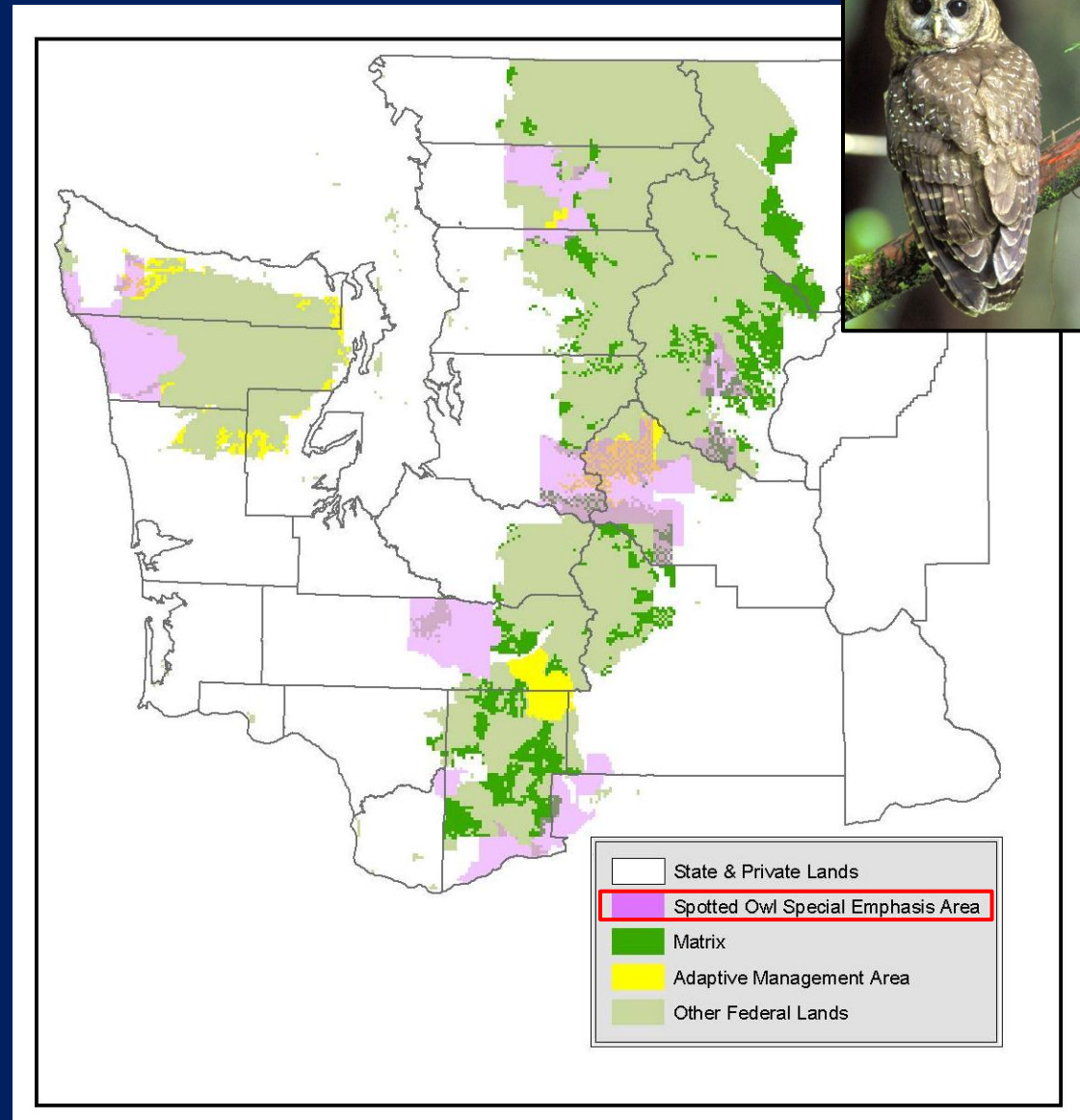
- Snags
- Green recruitment trees
- Logs
- Harvest unit size, adjacency
- Wetlands
- Riparian areas

Information is subject to
changes and amendments over time

April 12-13, 2013
WDFW Commission Meeting Presentation

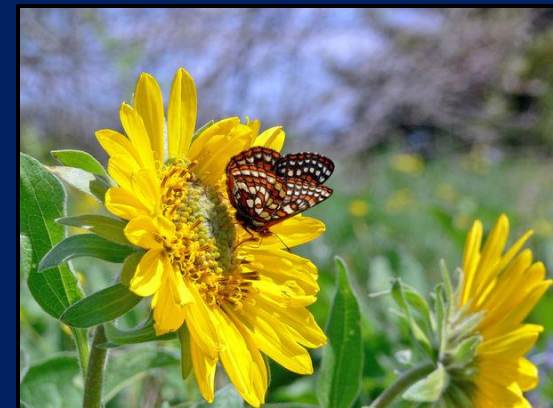
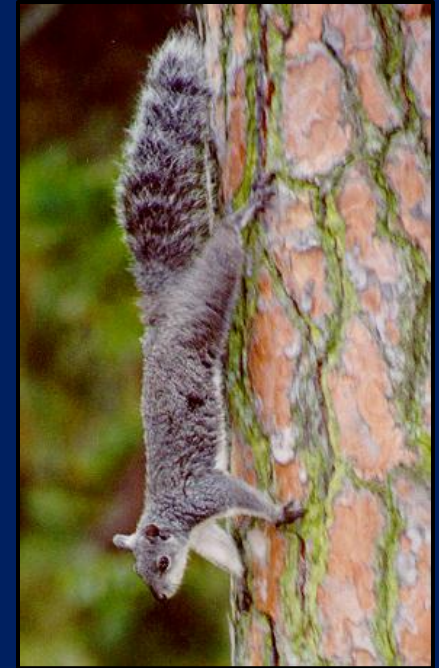
Northern Spotted Owl

- 1 million acres of forest in 11 Spotted Owls Special Emphasis Areas (SOSEAs)



WDFW's Role in Implementation of Forest Practices Rules

- ◉ Screen high priority Forest Practice Applications
- ◉ Habitat typing and assessments
- ◉ Negotiate habitat management plans
- ◉ Assist Wildlife Program w/ species surveys
- ◉ Coordinate WDFW expertise during forest practices appeals



Forest Practices Board's Wildlife Work Plan

◉ Wildlife Work Plan

1. Assessments of species-specific rules
2. Habitat relationships models
3. Incentives
4. Adaptive management

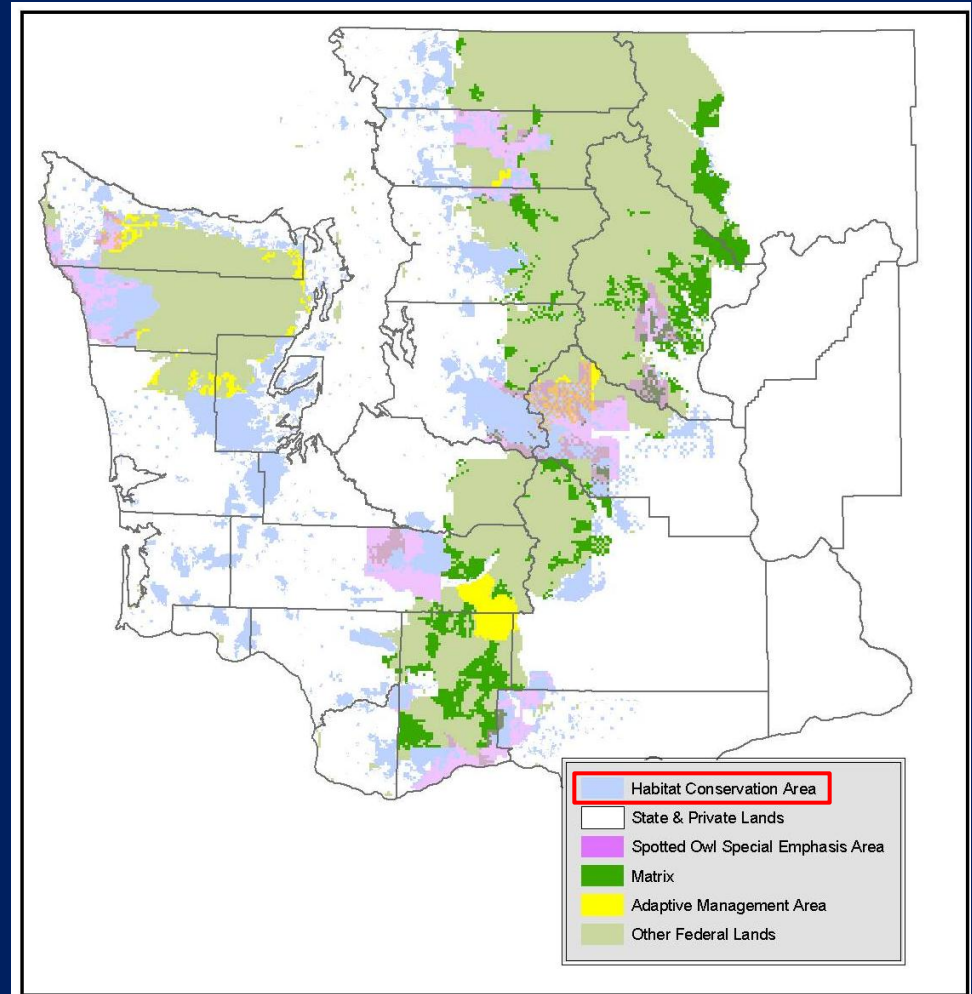


Non-Forest Practices Board Habitat Conservation



Federal Habitat Conservation Plans (HCPs)

- Over 2 million acres under HCPs
 - DNR (1.6 million acres)
 - West Fork Timber
 - Plum Creek
 - City of Tacoma
 - City of Seattle
 - Port Blakely
 - Green Diamond
 - SDS Company
 - WDFW Wildlife Areas



Additional & Emerging Activities

- ◉ WDFW lands
- ◉ Forest biomass
- ◉ Landowner incentives
- ◉ Ecosystem services

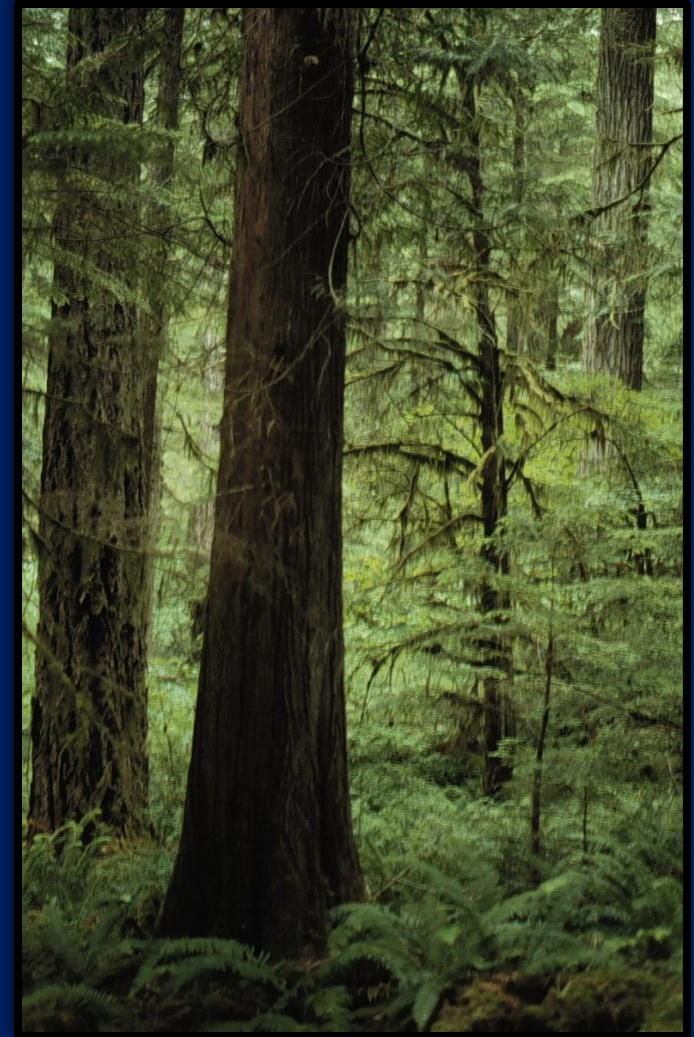


Summary

- ◉ WDFW is a leader in forest habitat conservation and management
- ◉ Provide unique scientific research, data and expertise to conserve fish and wildlife habitat using sustainable solutions
- ◉ Influence decisions affecting millions of forested acres

Summary (cont.)

- Significant contributions to effective stakeholder collaborative process; Timber, Fish & Wildlife (TFW)
- Integral participant to maintain the Forest Practices HCP (Forests & Fish)





Thank you