

Update on the Colockum Elk Herd



*Ted Clausing, Region 3 Wildlife Program Manager
Washington Department of Fish & Wildlife*

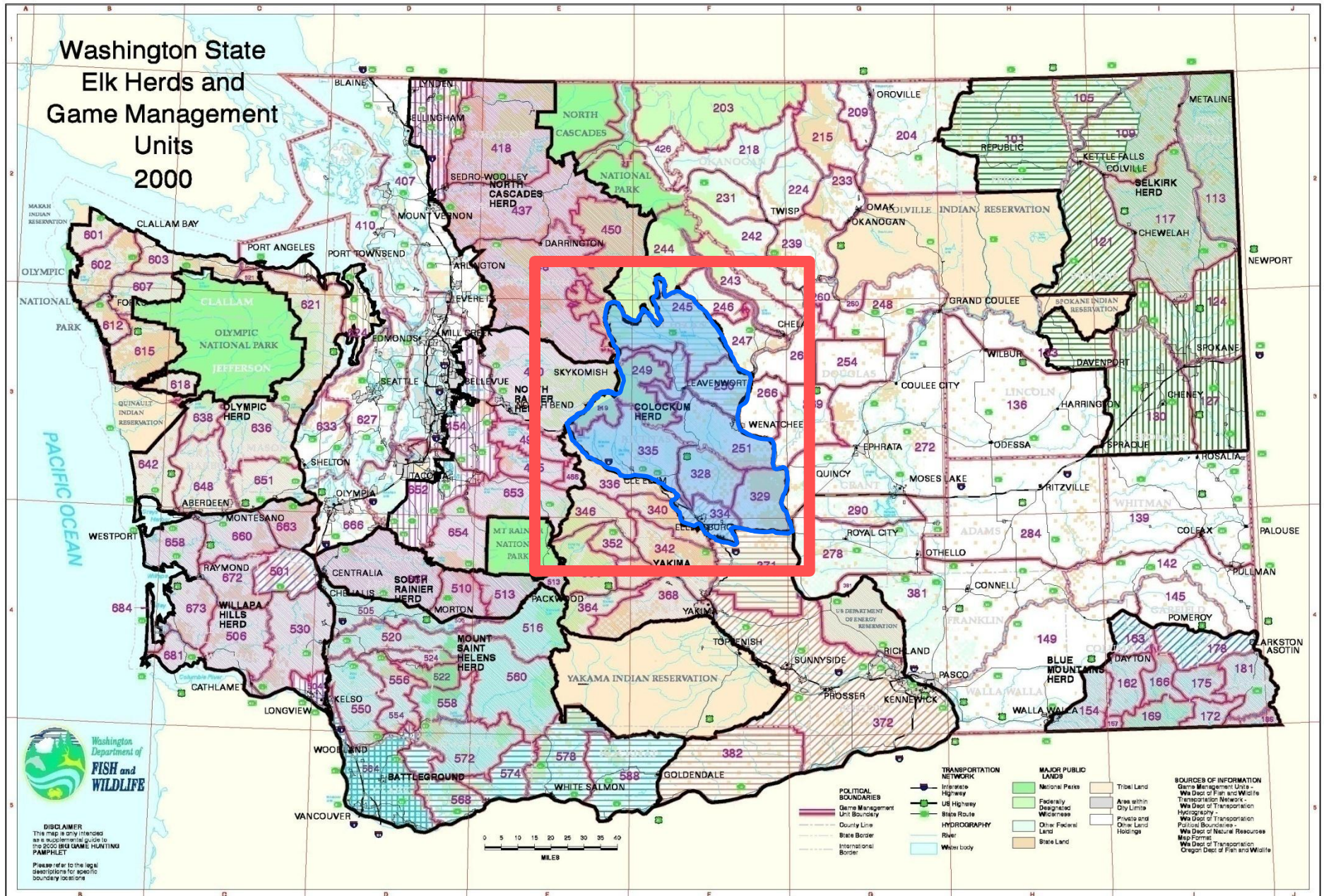
June 7, 2013

Presentation Objectives

- Review Colockum elk herd management
 - Update on the status of the population
 - Identify ongoing management challenges
- Discuss progress on the Naneum Ridge to Columbia River Recreation Plan



Washington State Elk Herds and Game Management Units 2000



DISCLAIMER
This map is only intended as a supplemental guide to the 2000 BEAR GAME HUNTING PAMPHLET.
Please refer to the legal descriptions for specific boundary locations.

June 7, 2013, WDFW Commission Meeting
Presentation

Herd Area Attributes

- Core area is relatively open landscape
- High road density and easy access
- Little wilderness or road-less area is available
- Supports >25,000 elk hunter days per year



Herd Management Objectives

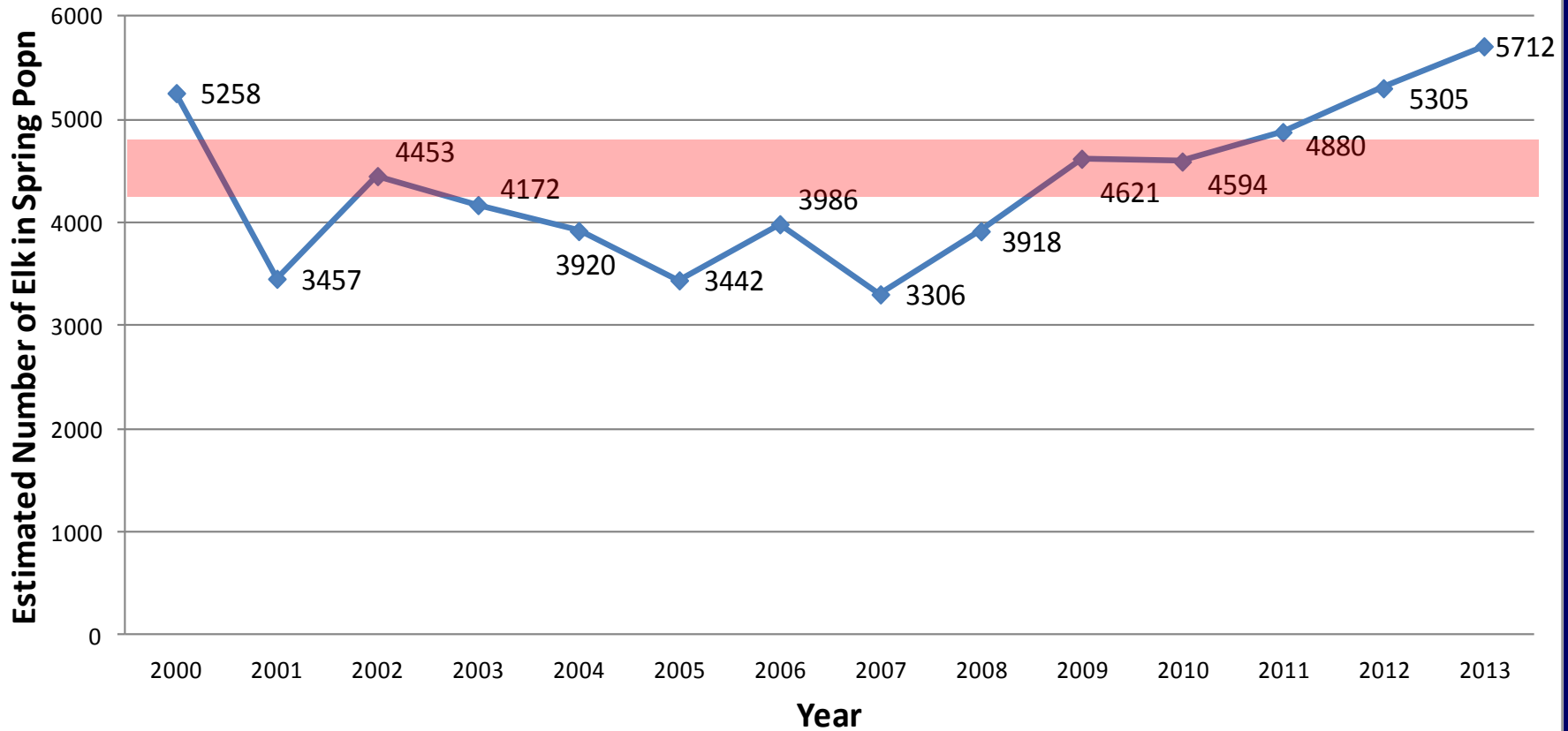
- Population of 4,500 elk in surveyed portion of winter range
- Post-season bull ratio of 12-20 bulls:100 cows
- Improve elk habitat and reduce disturbance
- Minimize agricultural damage to private lands



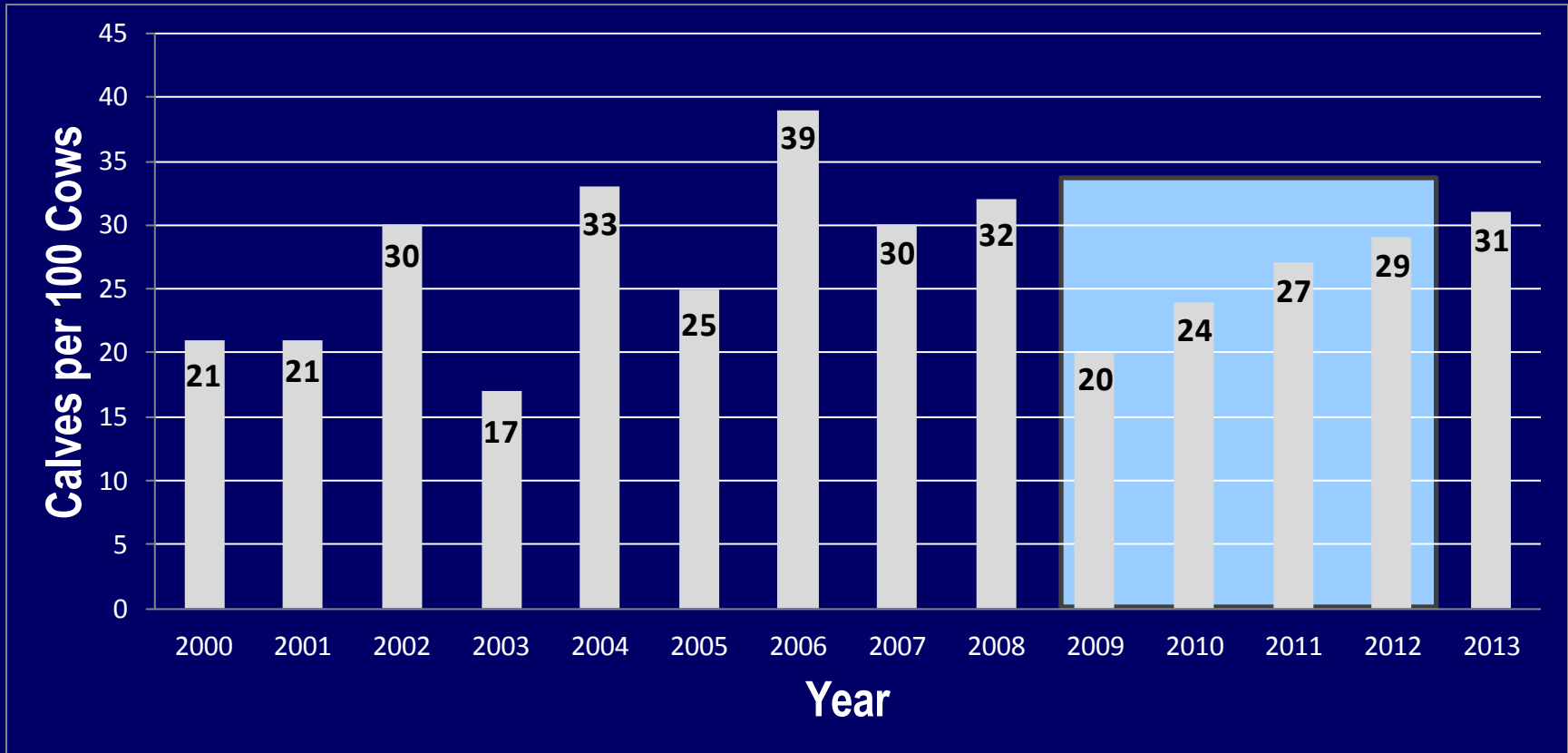
Refining Survey Techniques

- Real time GPS tracking
- Survey 100% of the defined winter range
- Photo documenting all large groups
- Calf sub-sampling

Colockum Herd Size

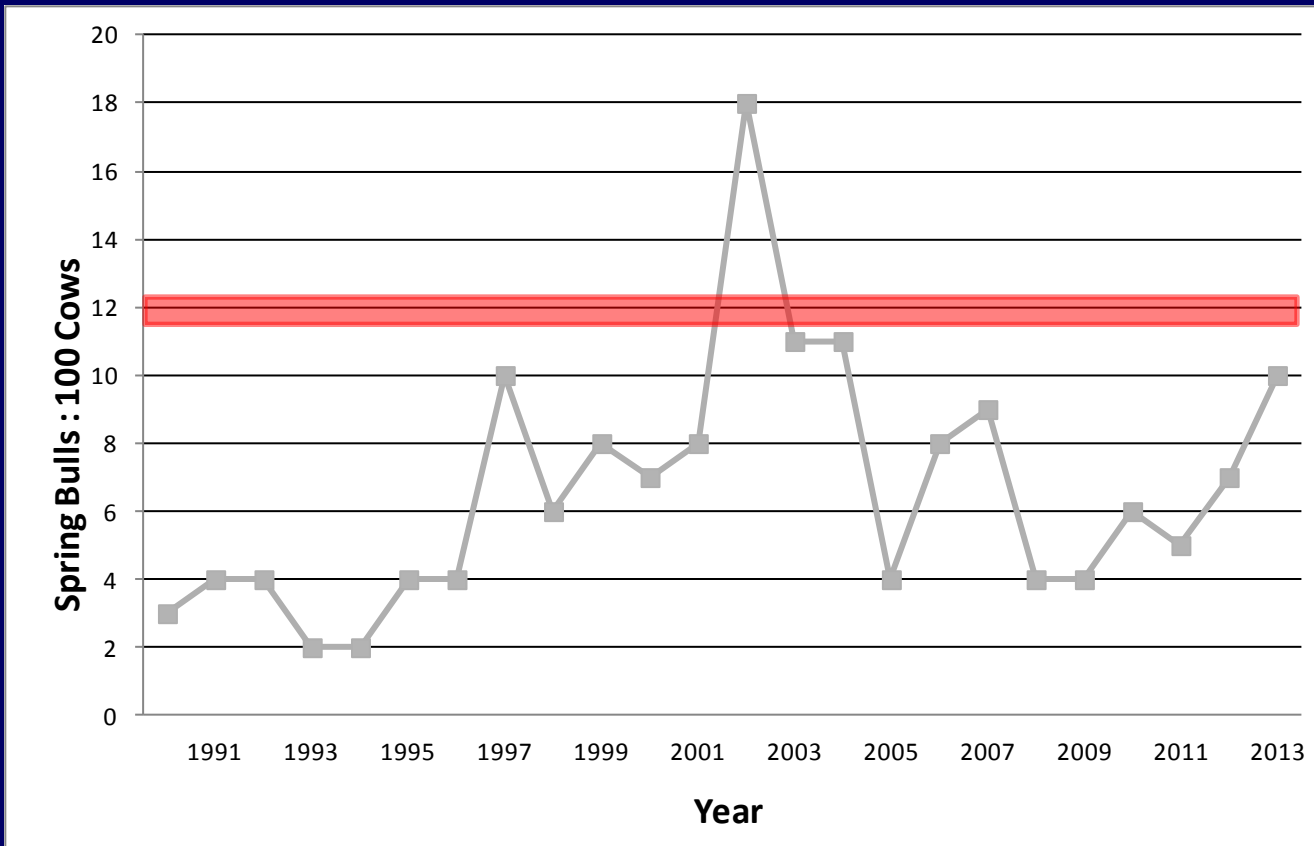


Calf Recruitment



Lactation Data:
Mean = 33.6:100
N= 134

Colockum Bull Management



- Ratio chronically below objective
- Spike only management started in 1994
- True spike only management started 2009
- Limited permits for adult bulls

Evolving Standard for Legal Bulls

& Managing Vulnerability

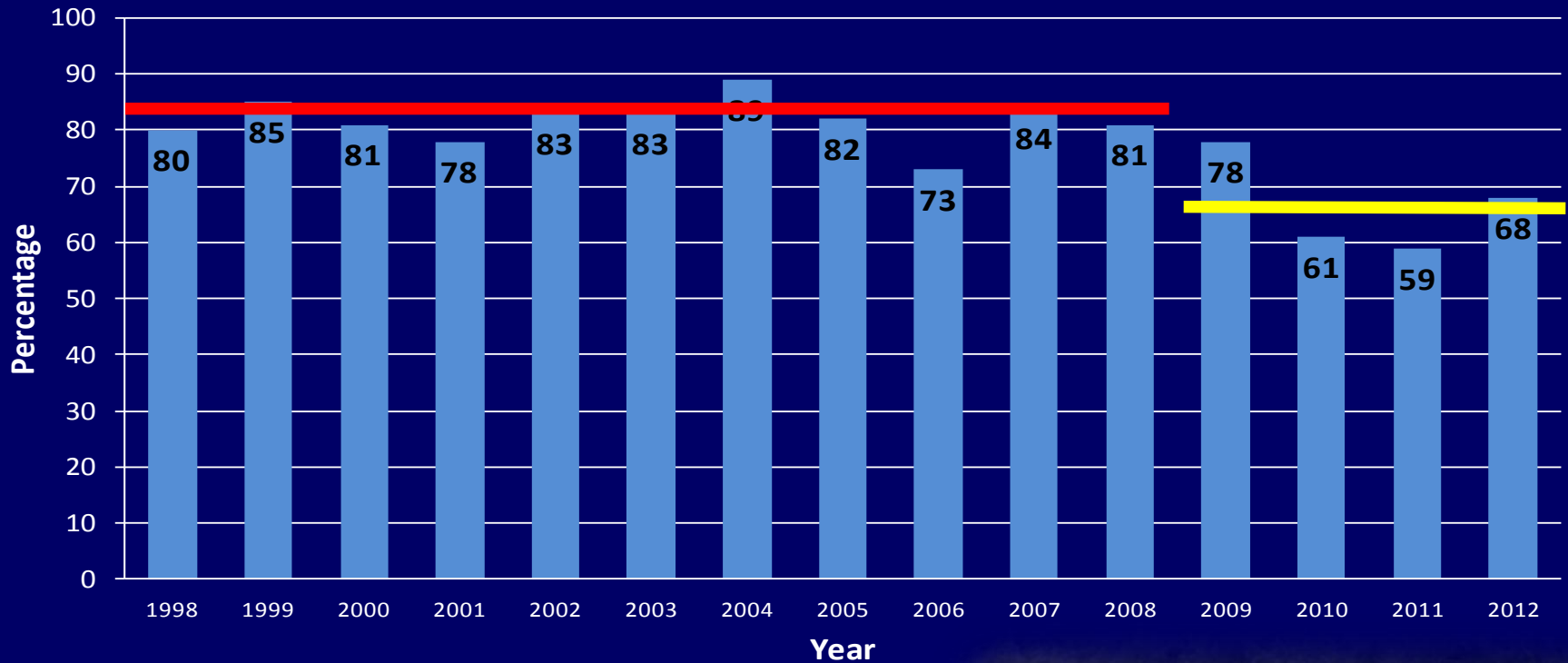
Pre-1994

1994-2008

2009-

June 7, 2013, WDFW Commission Meeting
Presentation

Percentage of Yearling Bulls Harvested

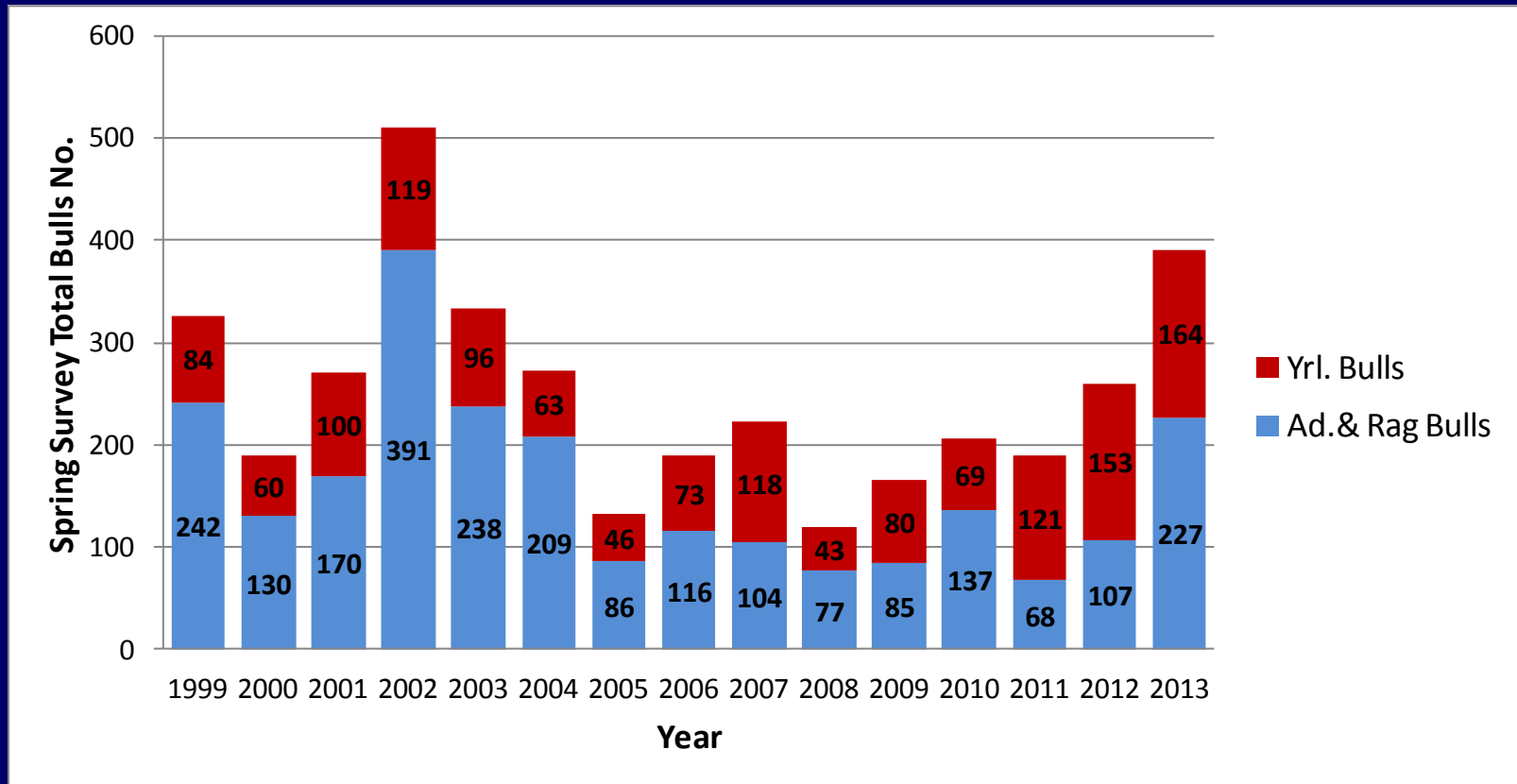


% of yrl. bulls harvested under SOM

- Colockum ~ 82%
- Yakima ~ 70%
- Blue Mtns. ~ 60%
- **TSOM Goal** ~ **65%**



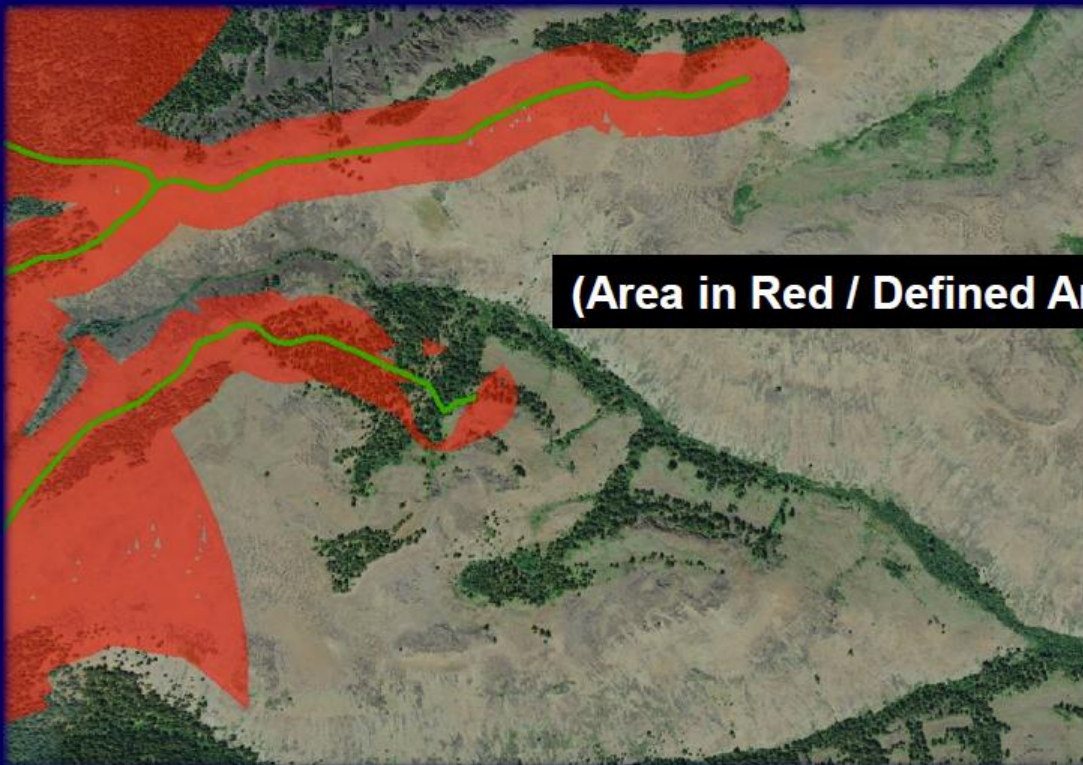
Adult & Yearling Bull Population Estimates





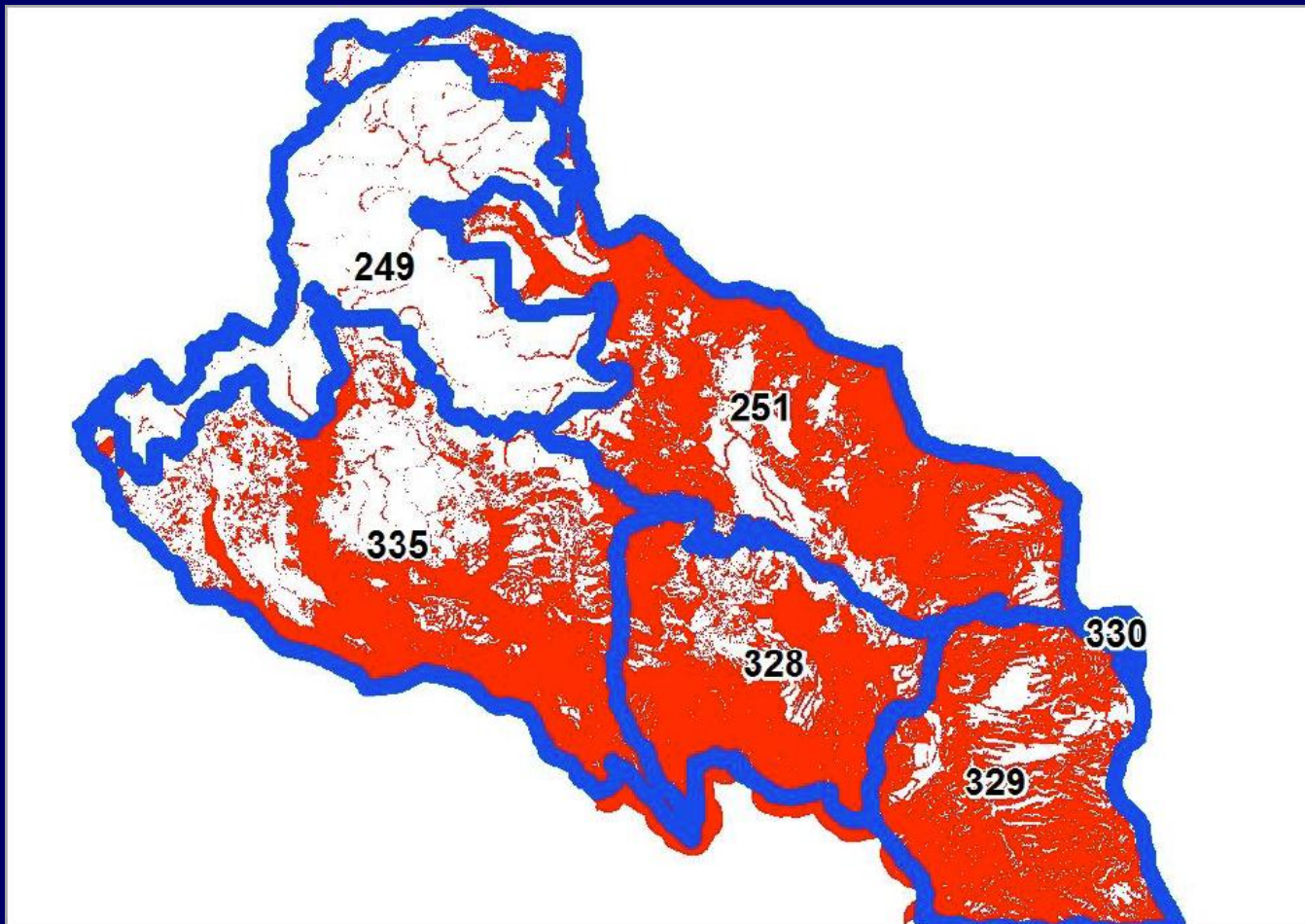
Basics of the Model

- **Zone of Influence:** percentage of a landscape that is affected by human disturbance for a given species
 - Effects on elk by the human use of the road and trail system across the Colockum Herds range.



(Area in Red / Defined Area) x 100 = ZI Percentage

Zone of Influence from Roads and Trails



Colockum Bull Study

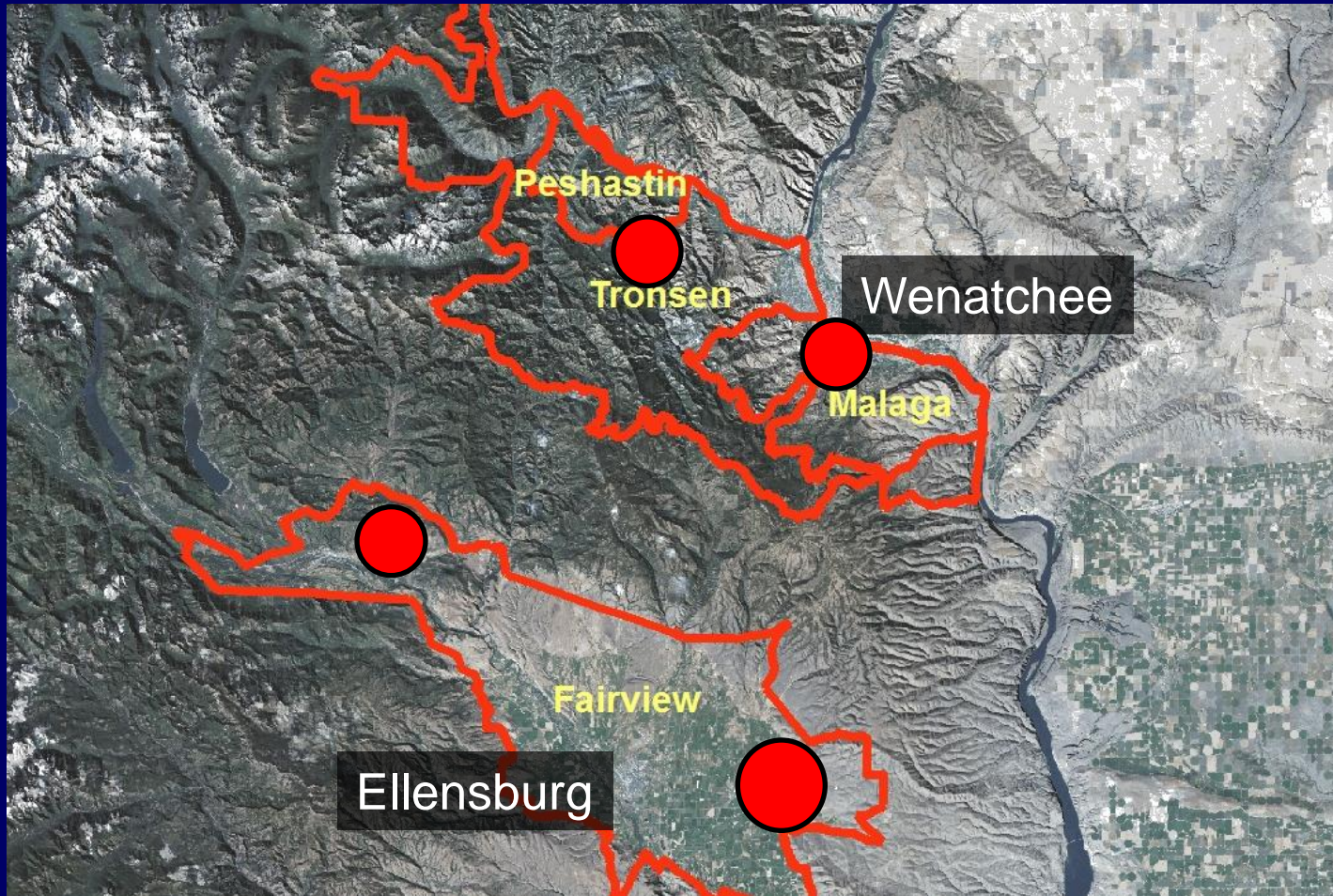
- True spike has increased yearling recruitment
- Branched bull numbers have not increased substantially within the survey area

Study Objectives:

- Determine 2+ year old bull survival
- Determine segregated bull wintering areas
- Potentially identify methods to survey bulls wintering in other areas



Agricultural Damage Areas



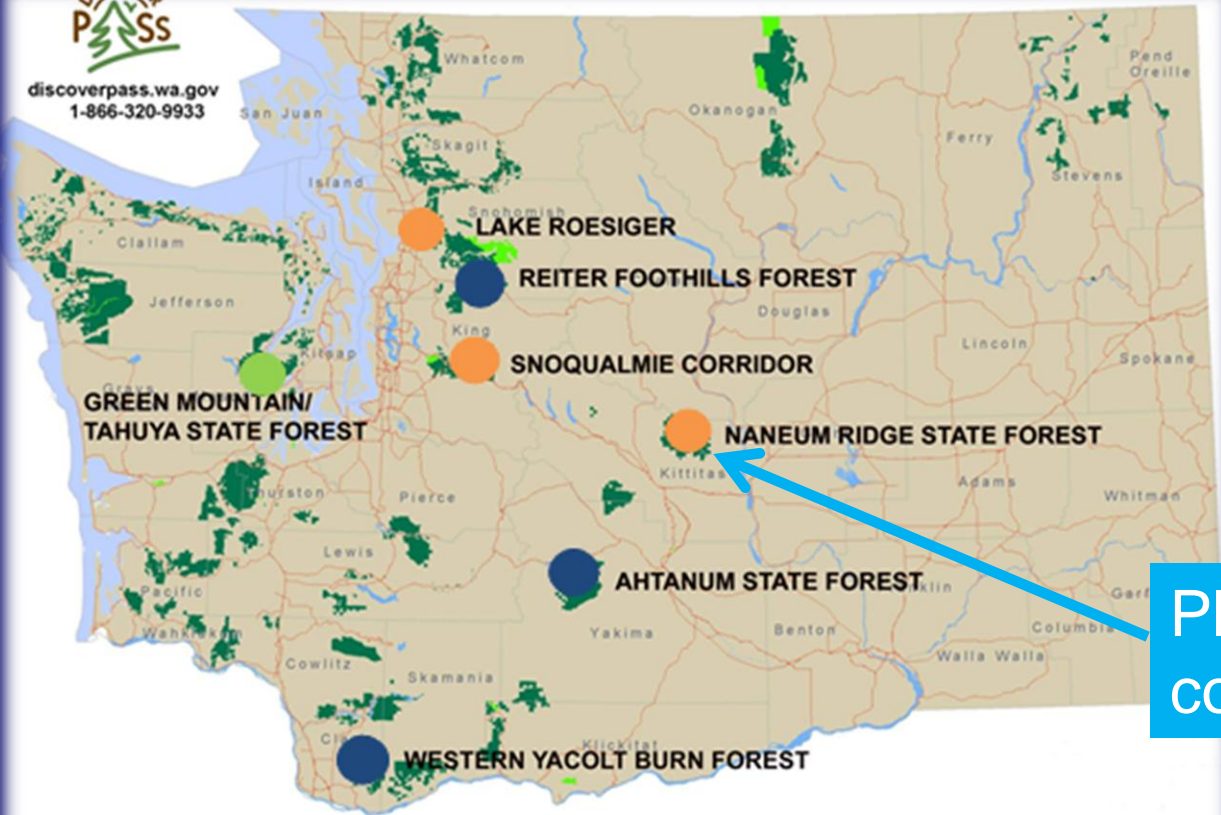
Naneum Ridge to Columbia River Recreation Plan

		2012 January-June	2012 July-December	2013 January- June	2013 July-December	2014 January
Phase 1	PRE-PLANNING Determine the need and scope, project team, stakeholder involvement plan, and data collection needs	■				
Phase 2	INVENTORY/ LAND SUITABILITY Determine the land suitability, community benefit and planning context for the project		■	■		
Phase 3	RECREATION INVENTORY/ PUBLIC INVOLVEMENT Determine public issues and concerns, hold public meetings, collect recreation field data, user surveys	■	■	■	■	■
Phase 4	ASSESSMENT Determine the 'BIG IDEA', or management concept for the planning area (what are we going to do where?)	■	■	■	■	■
Phase 5	ALTERNATIVE(S) Determine and describe the preferred alternative for the project, document preparation and production	■	■	■	■	■
Phase 6	SEPA & COMMUNICATIONS SEPA is conducted, plan is edited and formatted for publication	■	■	■	■	■
Phase 7	ADOPTION Plan is adopted by the agencies	■	■	■	■	■

Naneum Ridge to Columbia River Recreation Plan



discoverpass.wa.gov
1-866-320-9933



- DNR past planning efforts

Planning area will cover 230,000 acres

Completed plans

- Reiter Foothills Forest – 10,000 Acres
- Western Yacolt Burn Forest – 40,000 Acres
- Ahtanum State Forest – 76,000 Acres

Plans in progress

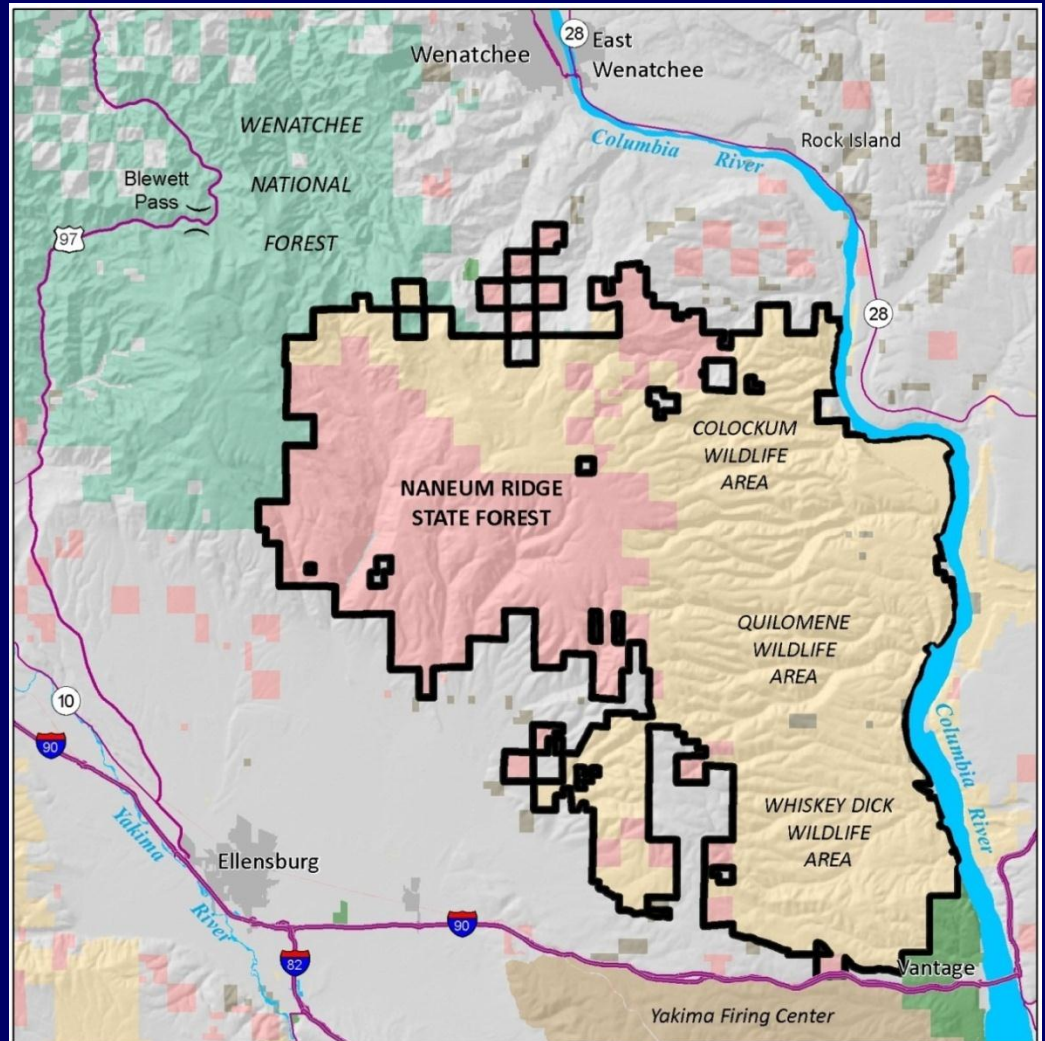
- Green Mountain/ Tahuya State Forest – 38,000 Acres

New plans

- Naneum Ridge State Forest – 90,000 Acres
- Lake Roesiger – 2,800 Acres
- Snoqualmie Corridor – 53,000 Acres

Naneum Ridge to Columbia River Recreation Plan

- Planning Area



Land Suitability Assessment

1) *Suitability Modules*

A. *Biological*

B. *Geology and soils*

C. *Management*

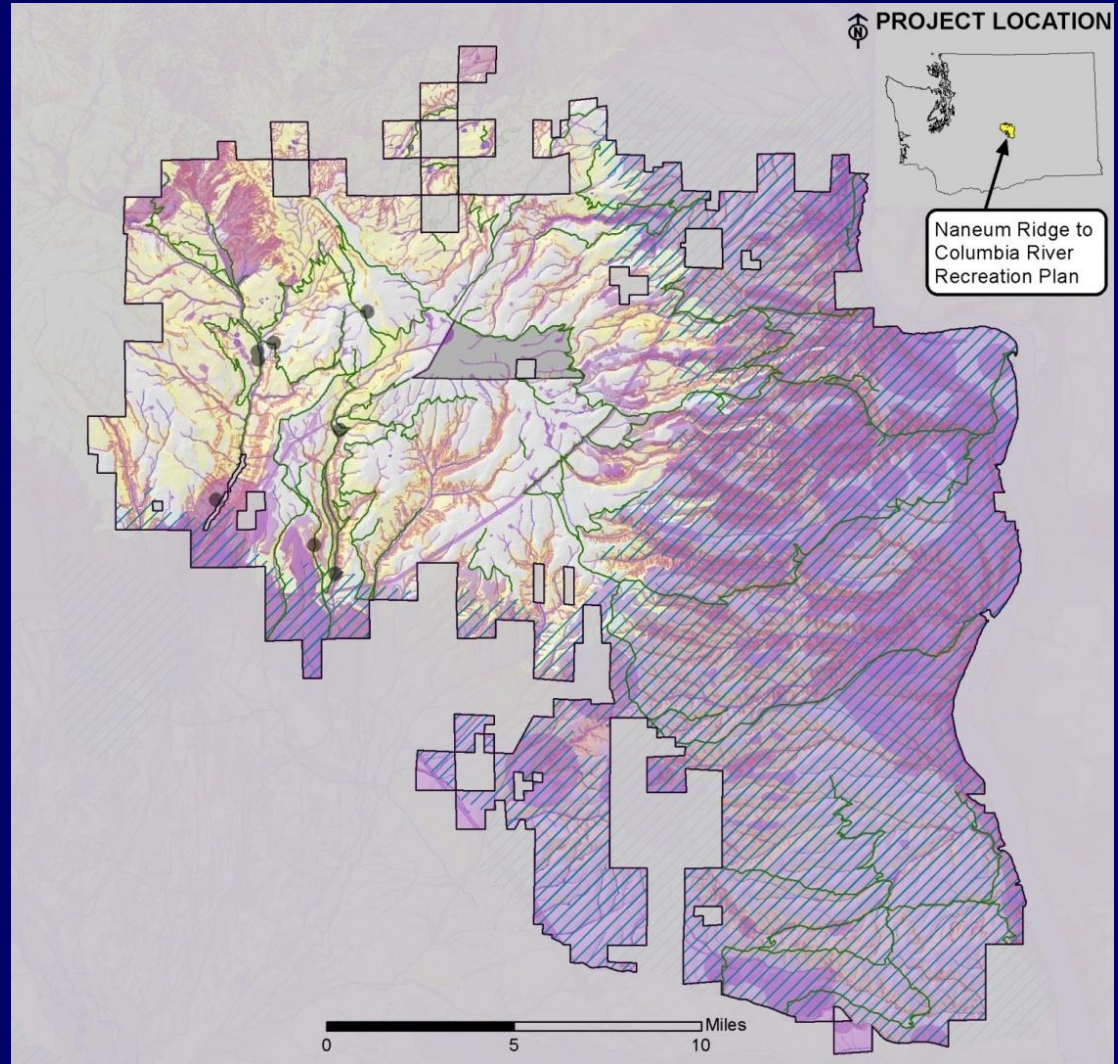
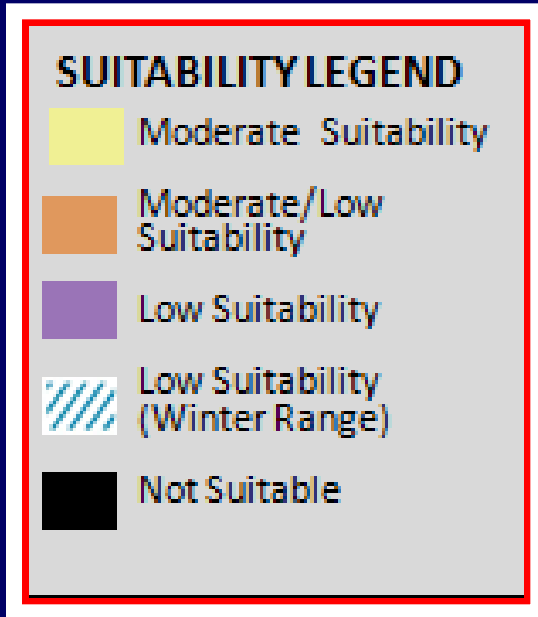
2) *Tri-Composites:*

A. *Summer*

B. *Summer + Seasonal*

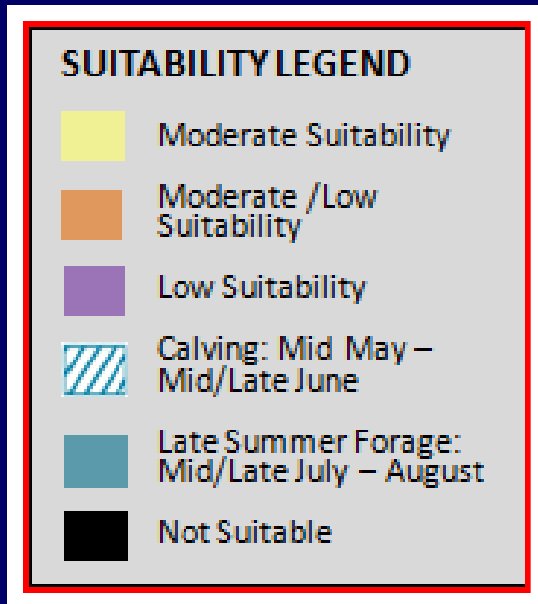
C. *Winter*

Winter Suitability Map

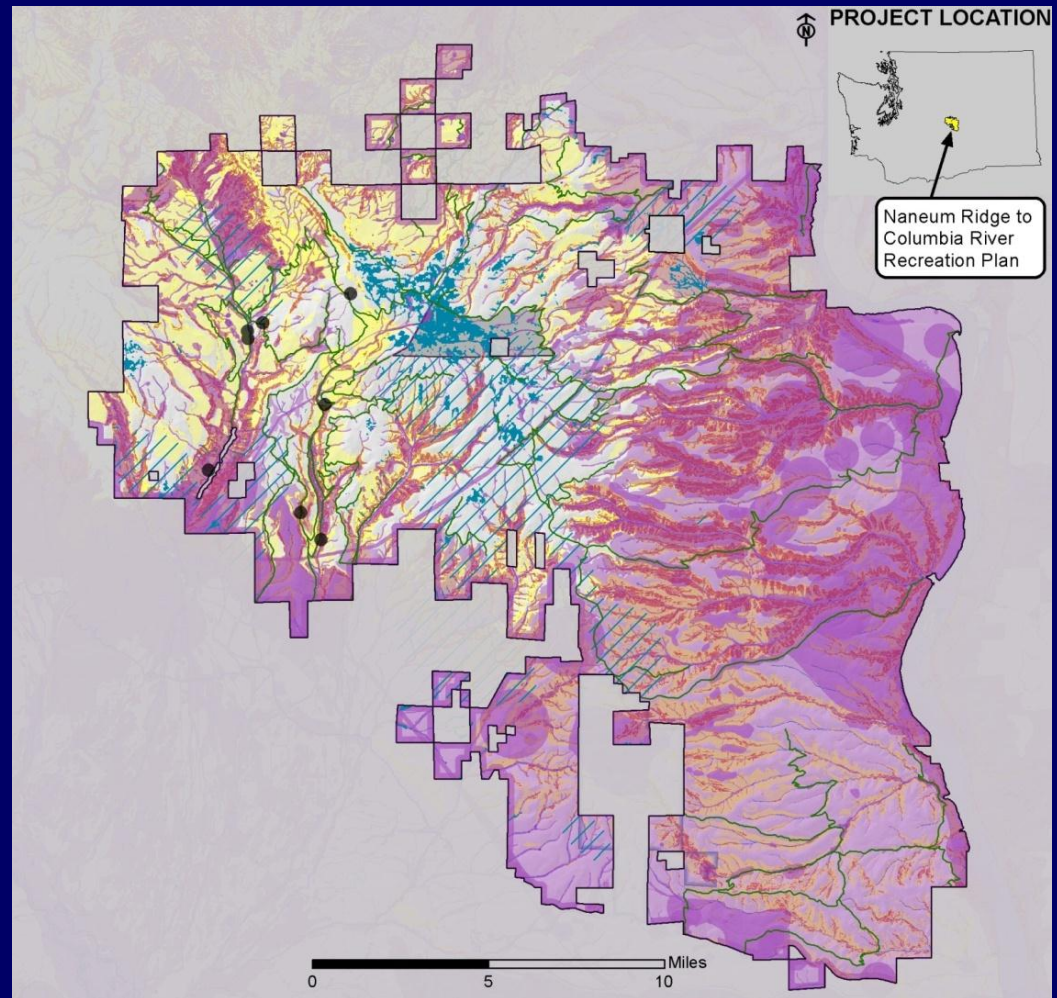


Winter WDFW Goal:
Reduce human disturbance & increase ungulate security

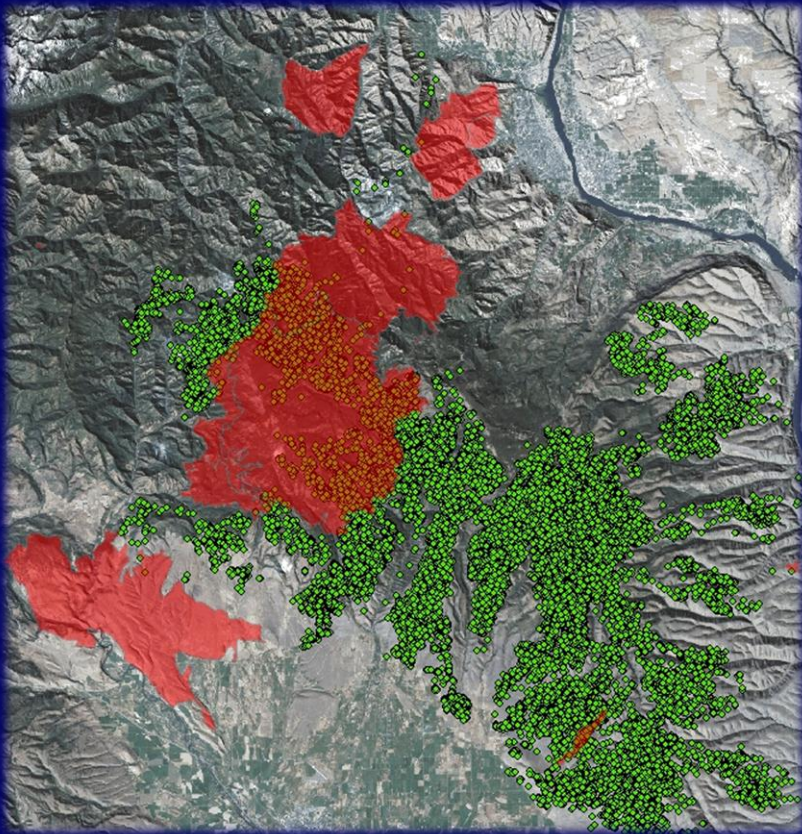
Summer/Fall Suitability Map



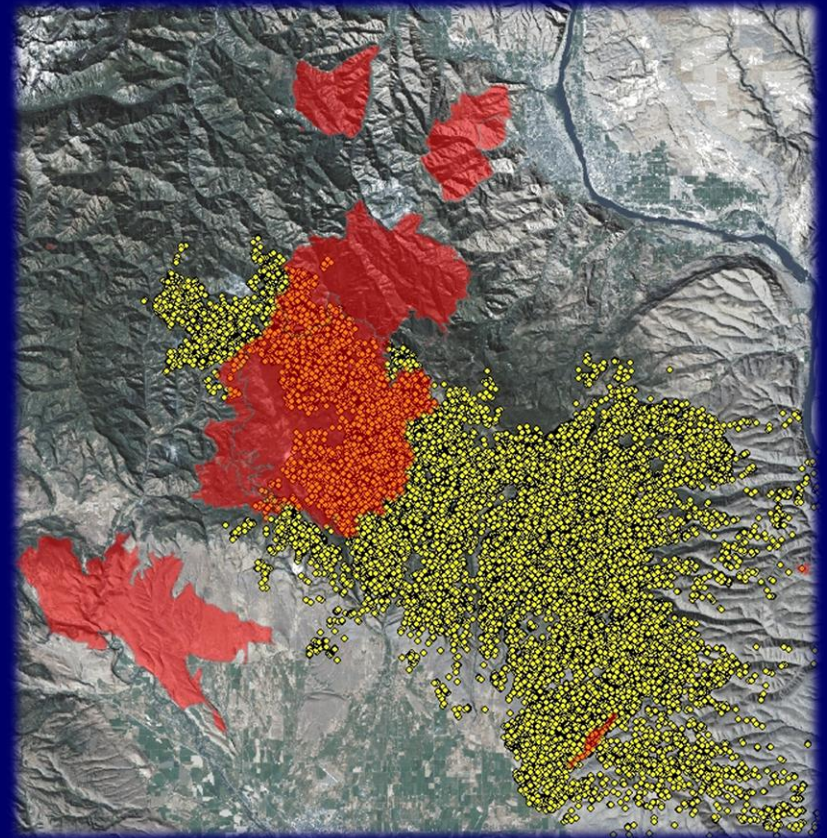
Fall WDFW Goal:
Reduce elk harvest
vulnerability



Fires 2012



Elk distribution June & July



Elk distribution Sept. & Oct.

Questions?

