

Game Reserves and Other Migratory Bird Hunting Regulations

Briefing and Public Hearing



Washington Department of
FISH and WILDLIFE

Don Kraege
Waterfowl Section Manager
Game Division, Wildlife Program

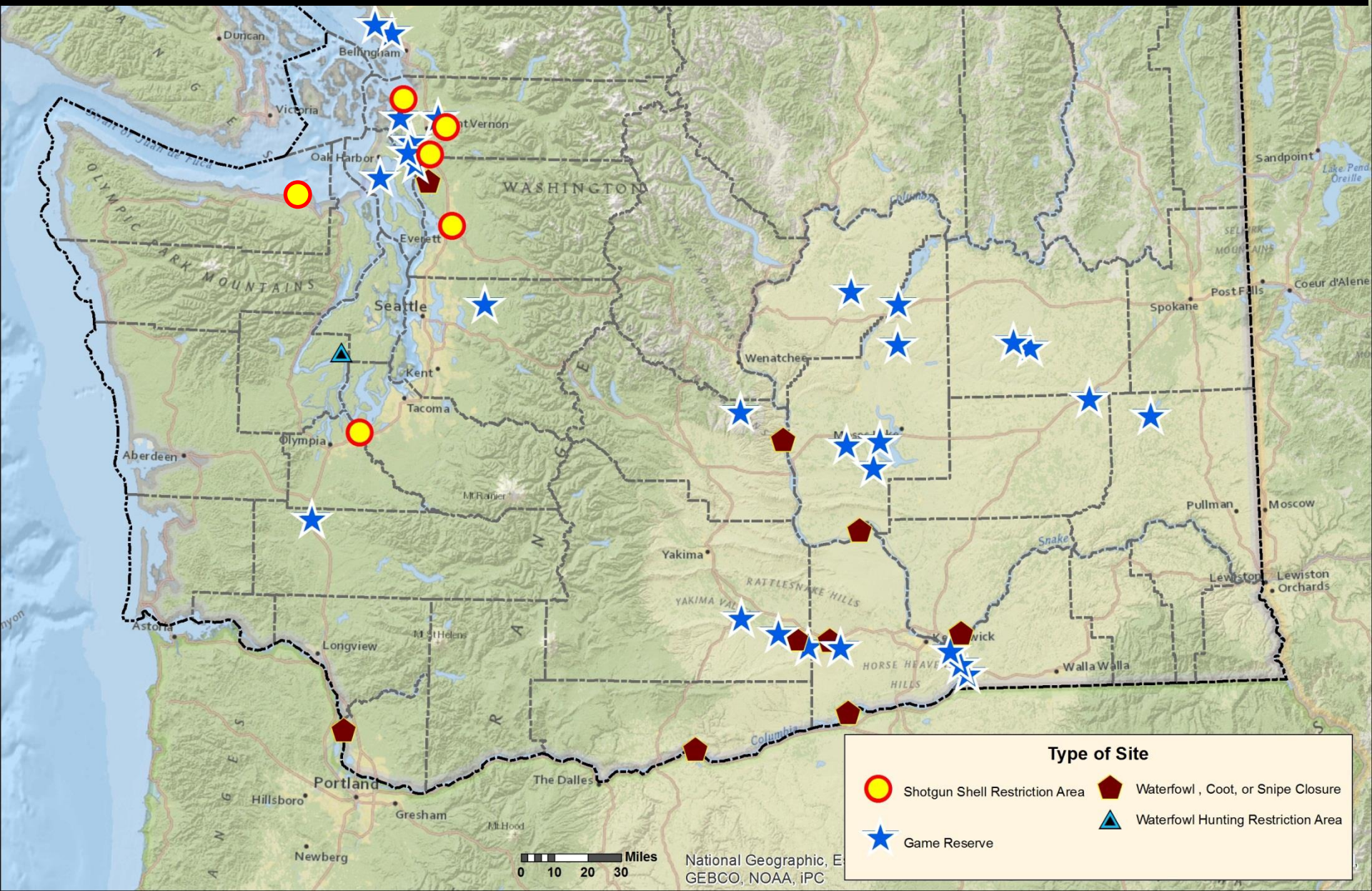
WAC Chapter 232-16

- **33 WACs in Chapter 232-16**
 - Game Reserves
 - RCW 77.08.010 (31) "Game reserve" means a closed area where hunting for all wild animals and wild birds is prohibited.
 - Migratory Bird Hunting Closures
 - Hunting Restriction Areas
 - Shotgun Shell Restriction Areas

WAC Chapter 232-16

- **Goals of reserves and closures**
 - Reduce disturbance of wildlife in important habitat use areas
 - Manage wildlife distribution
 - Improve hunting success in surrounding areas
- **Goals of hunting restriction areas and shotgun shell restriction areas**
 - Improve quality of hunting experience
 - Improve hunting success

Game Reserves, Migratory Bird Closures, Hunting Restriction Areas, Shotgun Shell Restriction Areas



WAC Chapter 232-16

Rulemaking actions intended to:

- Update, clarify, and consolidate existing rules
- Remove reserves and closures no longer functioning for original purpose
- Improve recreational opportunities for migratory bird hunting
- Provide more clear information to the public regarding locations

WAC Chapter 232-16

Review process for Chapter 232-16

- Initial evaluation completed in 2011
- Mapping, boundary review initiated in 2013
- Public review in 2014-15 (>75% support)
- Commission action March / April 2015
- Distribute and post maps before 2015-16 seasons

WAC Chapter 232-16

28 WACs involved in current rule actions

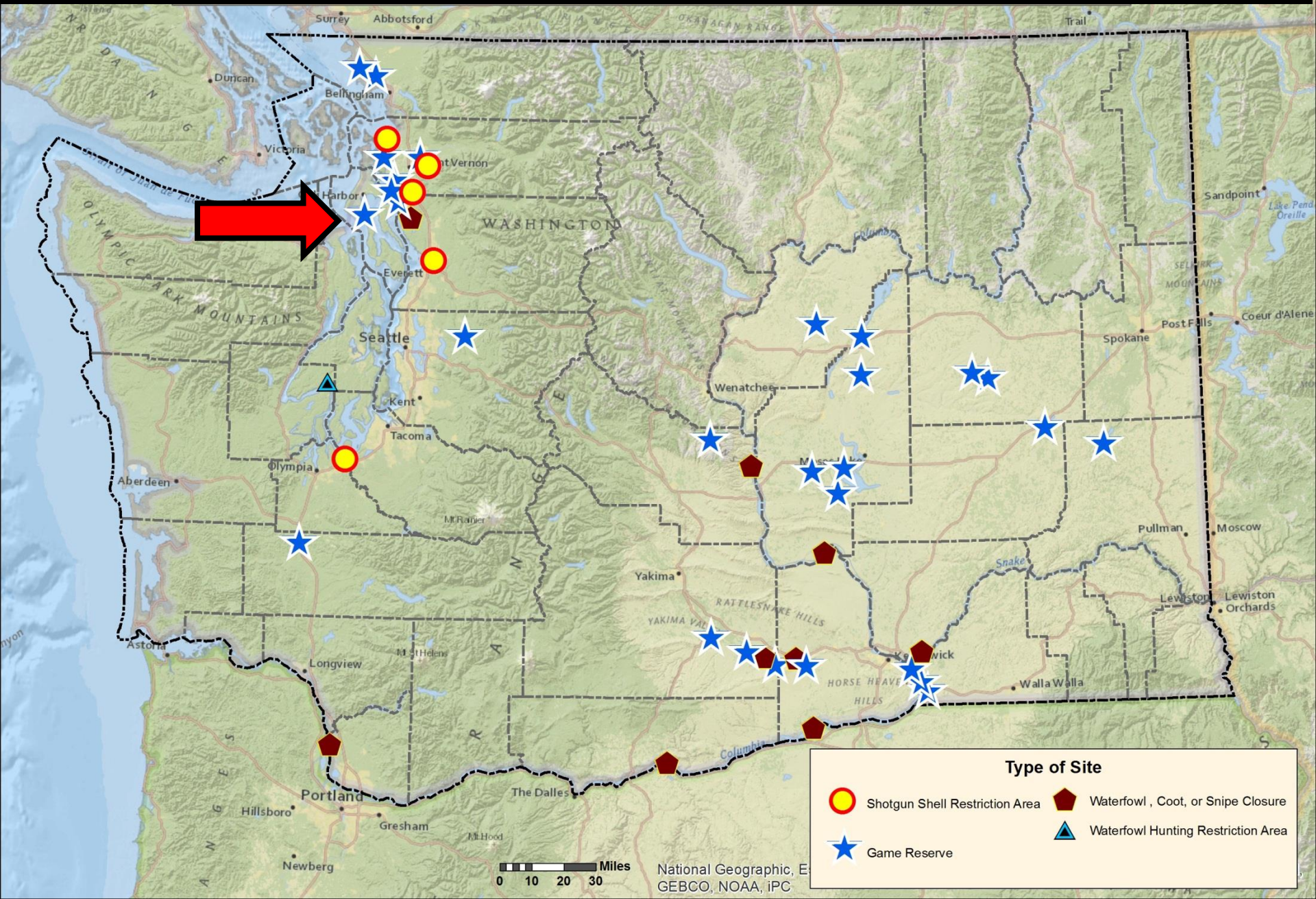
- Repeals (3)
- Major changes (5)
- Minor changes (20)



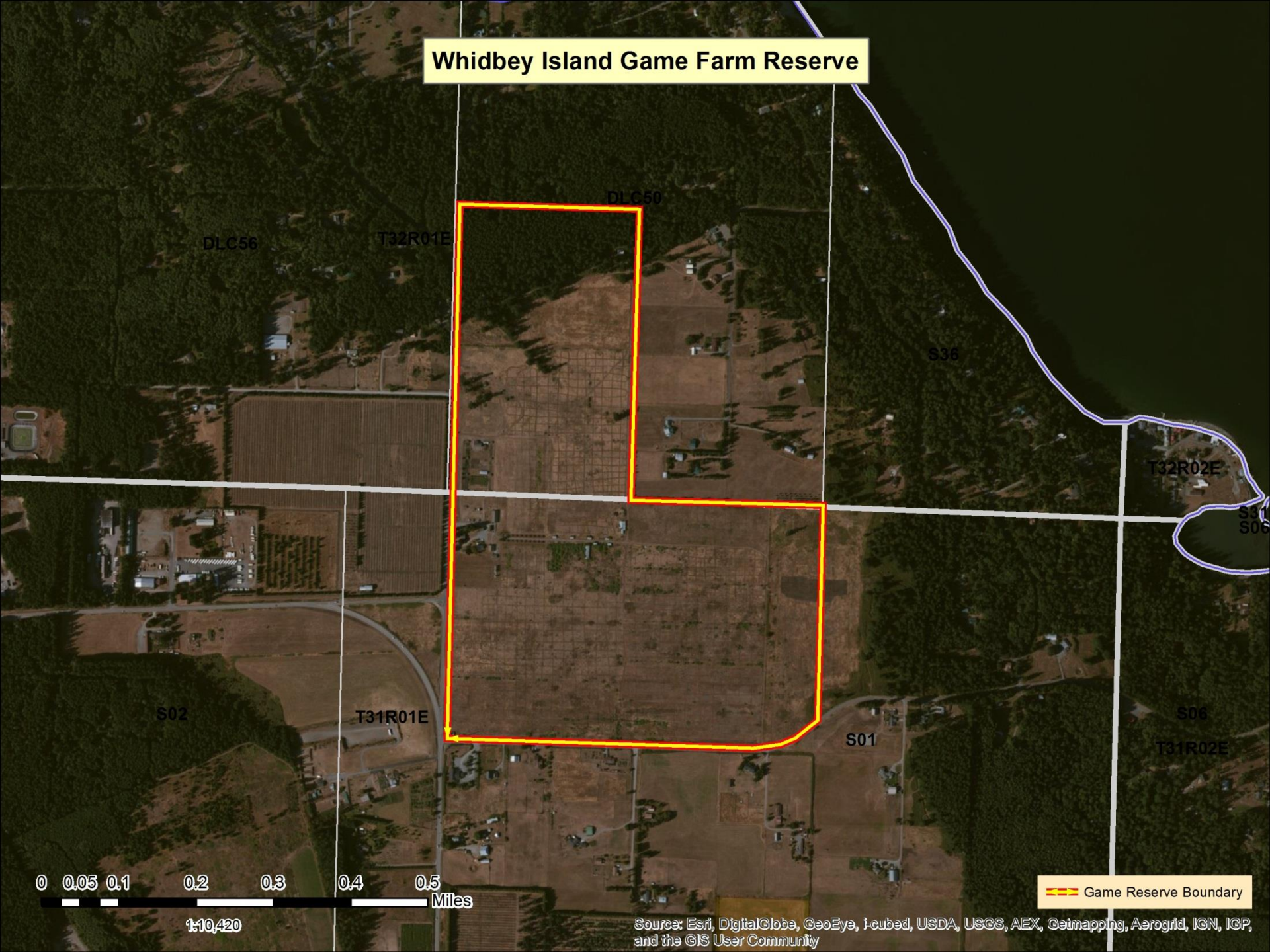
Repeals

- 232-16-480 Whidbey Island Game Farm Reserve
- 232-16-540 Yakima River Game Reserve
- 232-16-810 Port Susan Bay Canada goose closure

Whidbey Island Game Farm Reserve



Whidbey Island Game Farm Reserve



0 0.05 0.1 0.2 0.3 0.4 0.5 Miles

1:10,420

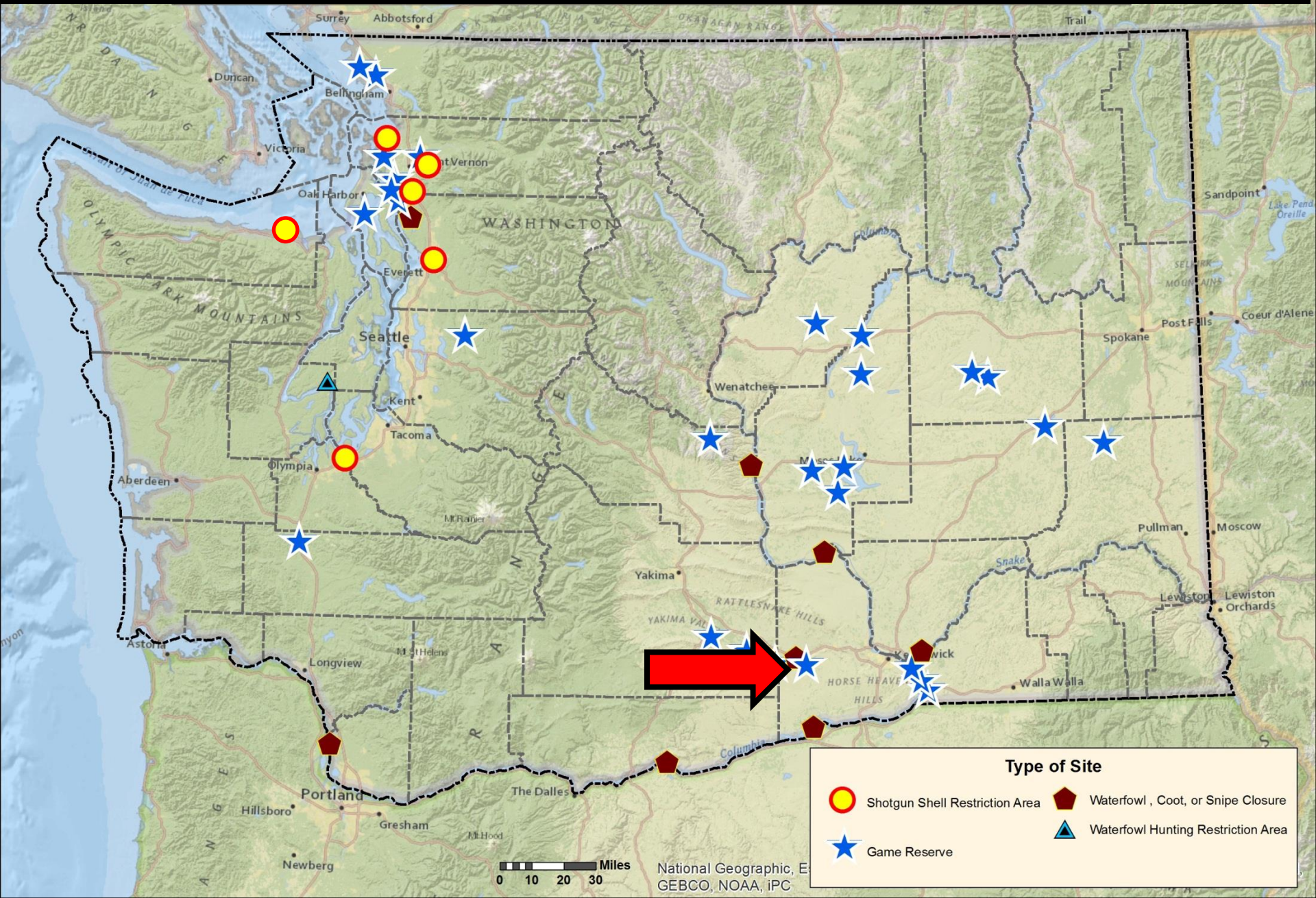
Game Reserve Boundary

Source: Esri, DigitalGlobe, GeoEye, I-cubed, USDA, USGS, AEX, Getmapping, Aerogrid, IGN, IGP, and the GIS User Community

Repeals

- 232-16-480 Whidbey Island Game Farm Reserve
- 232-16-540 Yakima River Game Reserve
- 232-16-810 Port Susan Bay Canada goose closure

Yakima River Game Reserve



Yakima River Game Reserve



Whitstran Unit

0 0.1 0.2 0.4 0.6 0.8 1 Miles

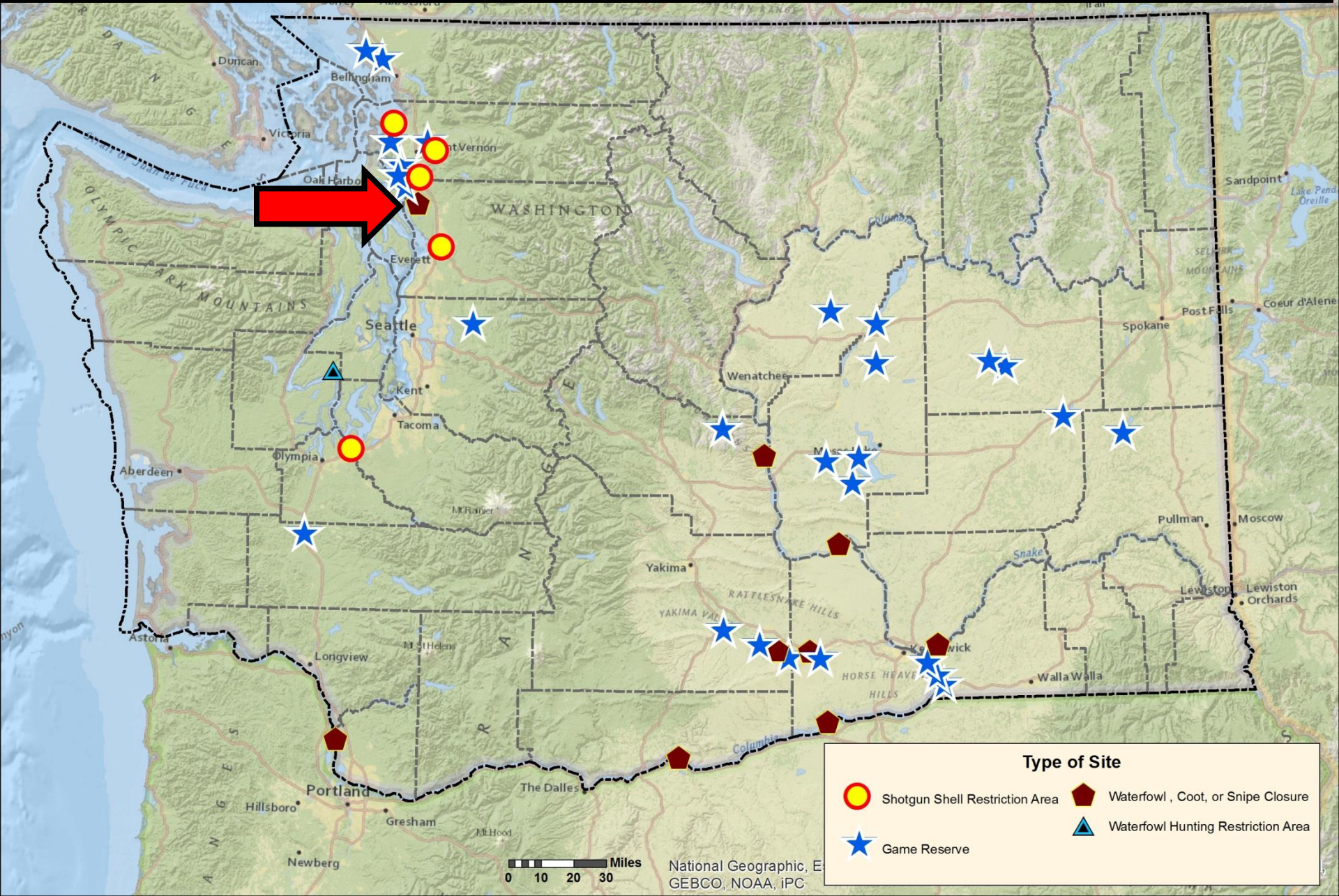
Game Reserve Boundary

Source: Esri, DigitalGlobe, GeoEye, i-cubed, USDA, USGS, AEX, Getmapping, Aerogrid, ICN, IGP, and the GIS User Community

Repeals

- 232-16-480 Whidbey Island Game Farm Reserve
- 232-16-540 Yakima River Game Reserve
- **232-16-810 Port Susan Bay Canada goose closure**

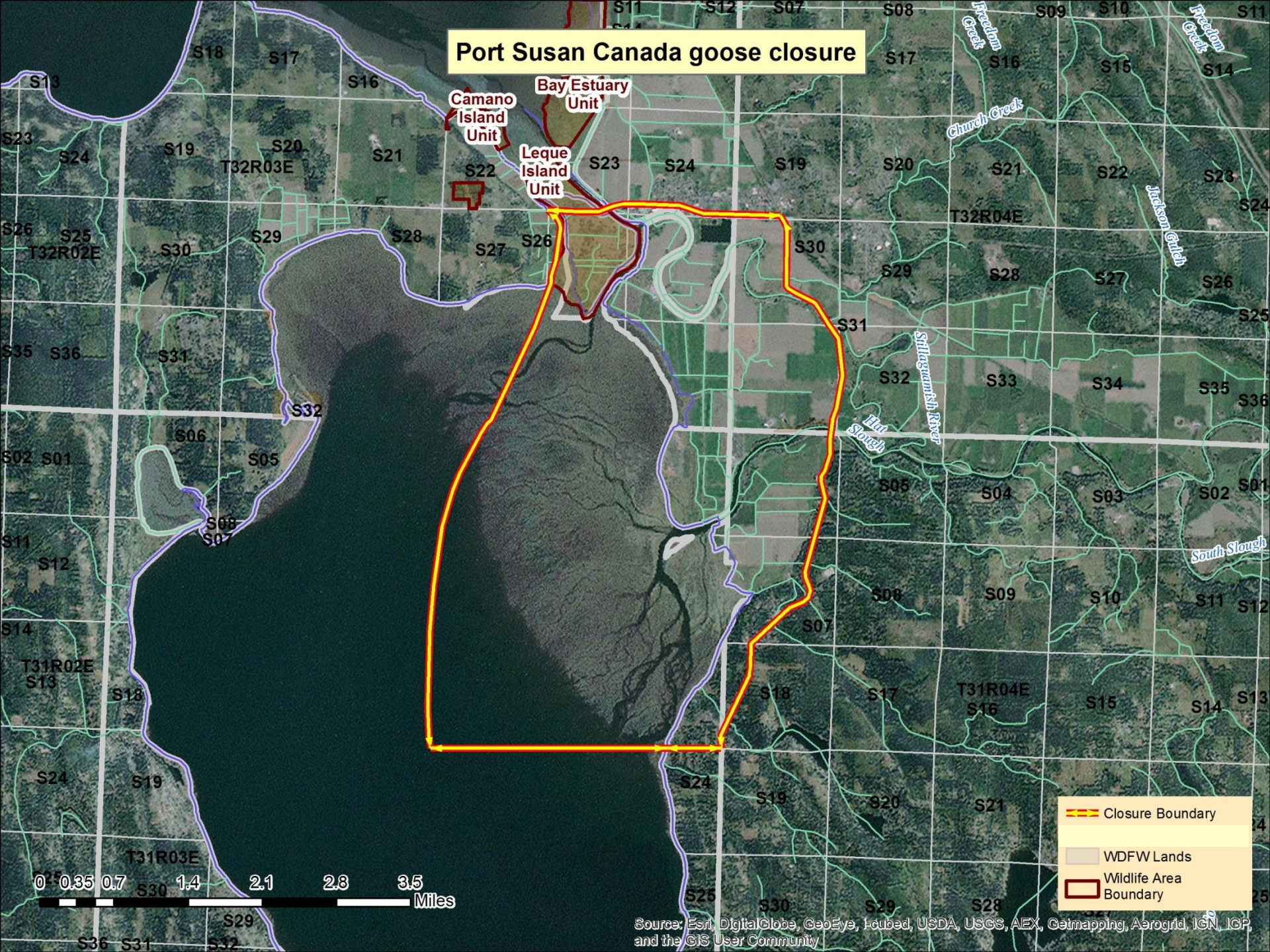
Port Susan Bay Canada Goose Closure



Type of Site

- Shotgun Shell Restriction Area
- Game Reserve
- Waterfowl, Coot, or Snipe Closure
- Waterfowl Hunting Restriction Area

Port Susan Canada goose closure

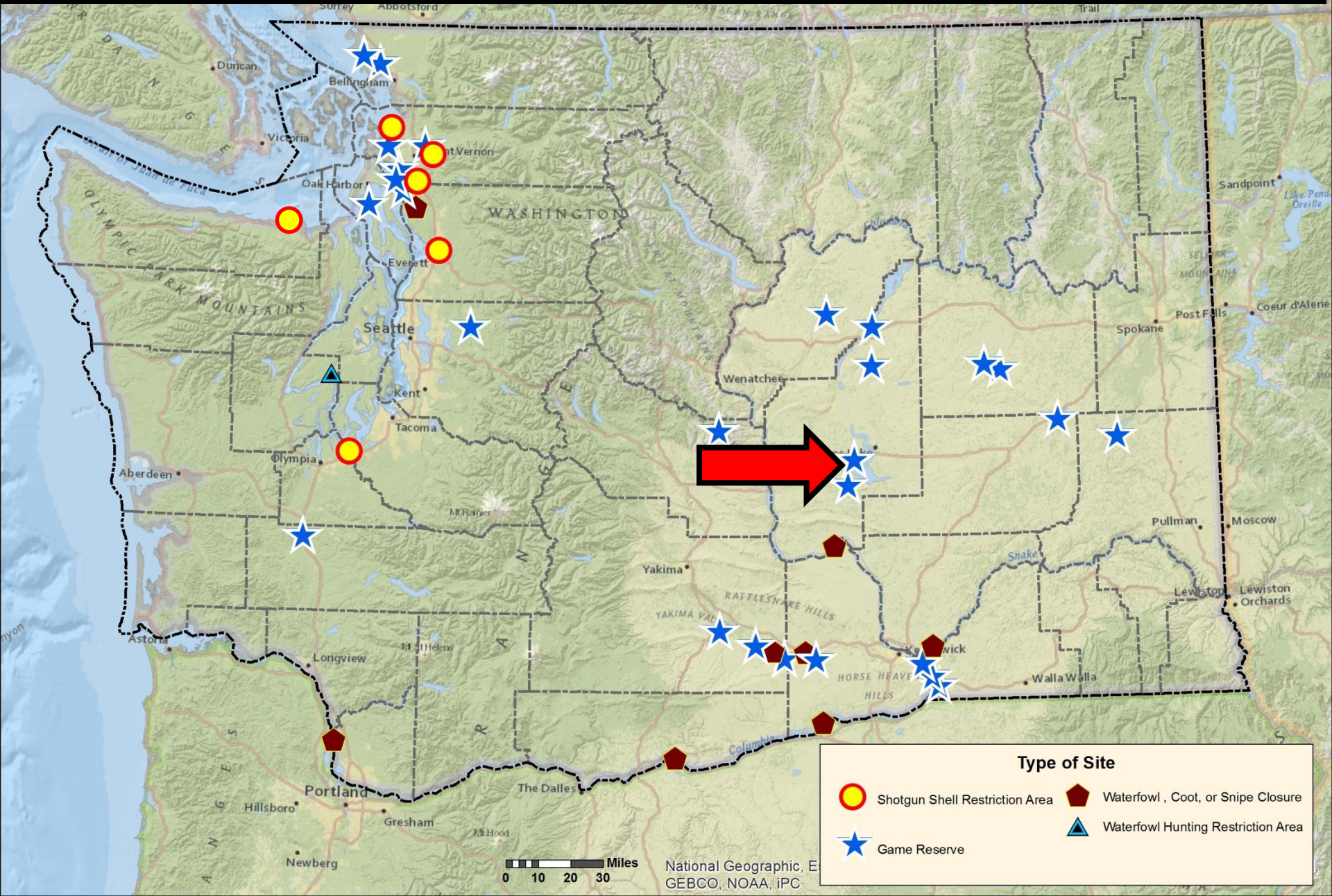


Source: Esri, DigitalGlobe, GeoEye, I-cubed, USDA, USGS, AEX, Getmapping, Aerogrid, IGN, IGP, and the GIS User Community

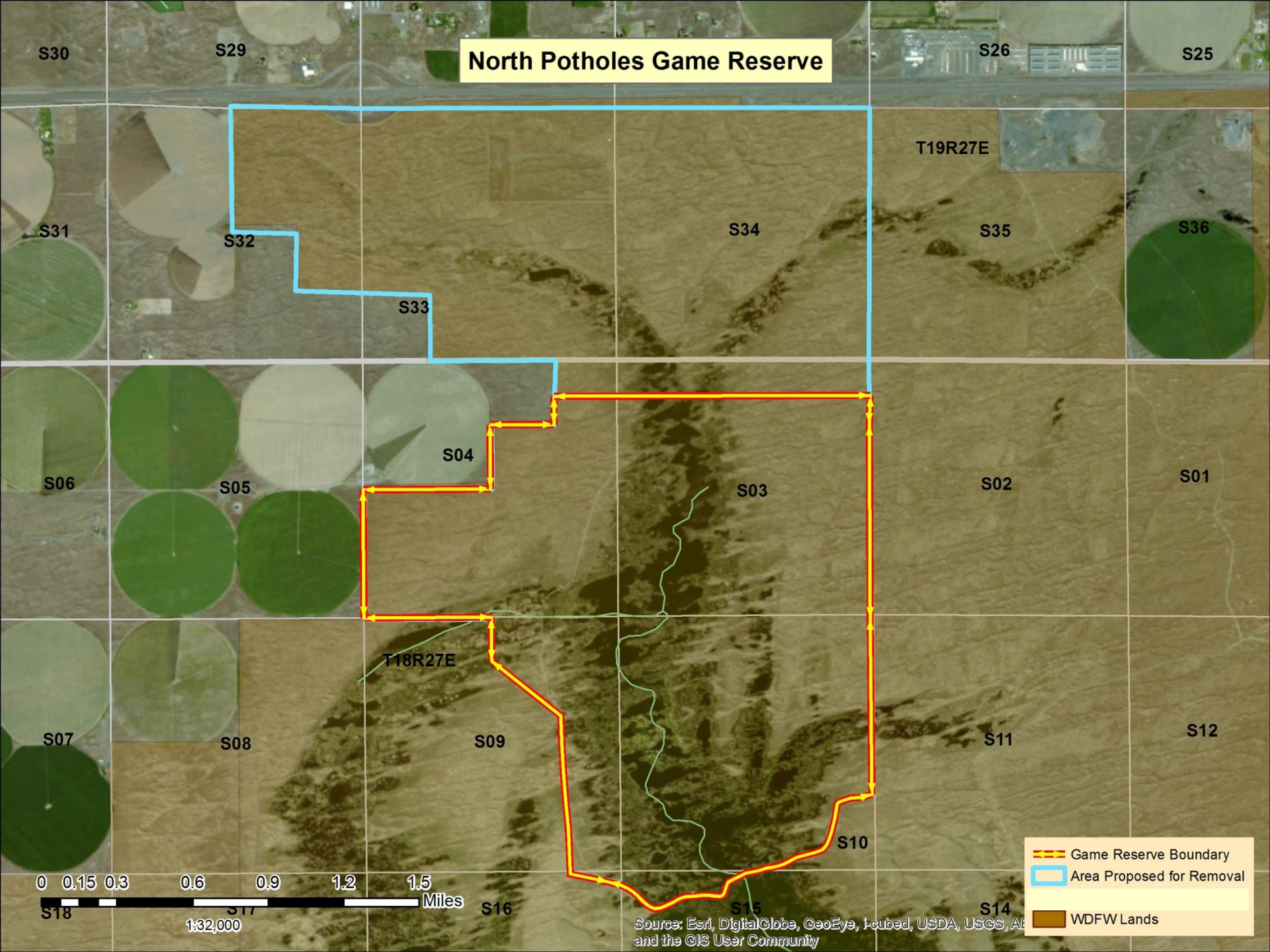
Major Changes

- 232-16-600 North Potholes Game Reserve
 - reduce size and create quality hunt area
- 232-16-640 Winchester Wasteway Game Reserve
 - reduce size and expand quality hunt area
- 232-16-740 Columbia, Snake, and Yakima River waterfowl, coot, and snipe closures
 - reduce size of Section 2 closure
 - eliminate Section 8
- 232-16-750 Belfair, Hood Canal hunting area restriction
 - expand and clarify quality hunt area
- 232-16-770 Shotgun shell restriction areas
 - add 3 quality hunt areas

North Potholes Game Reserve



North Potholes Game Reserve



S30

S29

S26

S25

T19R27E

S31

S32

S34

S35

S36

S33

S06

S04

S03

S02

S01

S05

S07

T18R27E

S09

S10

S11

S12

S08

0 0.15 0.3 0.6 0.9 1.2 1.5 Miles

1:32,000

S18

S17

S16

S15

S14

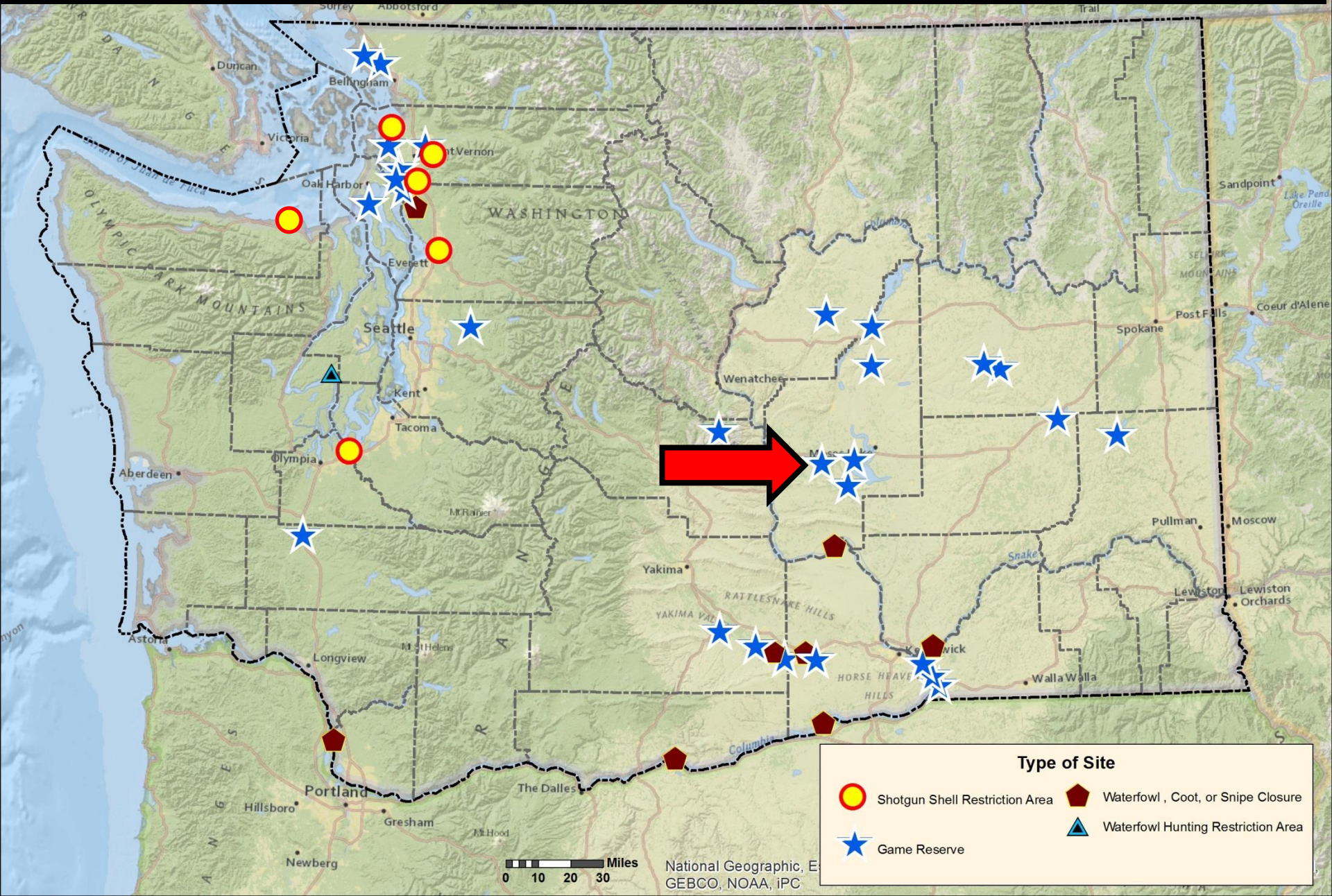
Source: Esri, DigitalGlobe, GeoEye, Earthstar, USDA, USGS, AeroGRID, IGN, and the GIS User Community

- Game Reserve Boundary
- Area Proposed for Removal
- WDFW Lands

Major Changes

- 232-16-600 North Potholes Game Reserve
 - reduce size and create quality hunt area
- **232-16-640 Winchester Wasteway Game Reserve**
 - reduce size and expand quality hunt area
- 232-16-740 Columbia, Snake, and Yakima River waterfowl, coot, and snipe closures
 - reduce size of Section 2 closure
 - eliminate Section 8
- 232-16-750 Belfair, Hood Canal hunting area restriction
 - expand and clarify quality hunt area
- 232-16-770 Shotgun shell restriction areas
 - add 3 quality hunt areas

Winchester Wasteway Game Reserve



Winchester Wasteway Game Reserve

S02

S01

S06

S05

Winchester Wasteway

S12

T18R26E

S07

S08

S11

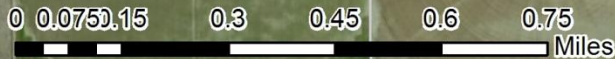
T18R25E

Desert Unit

S18

S13

S14



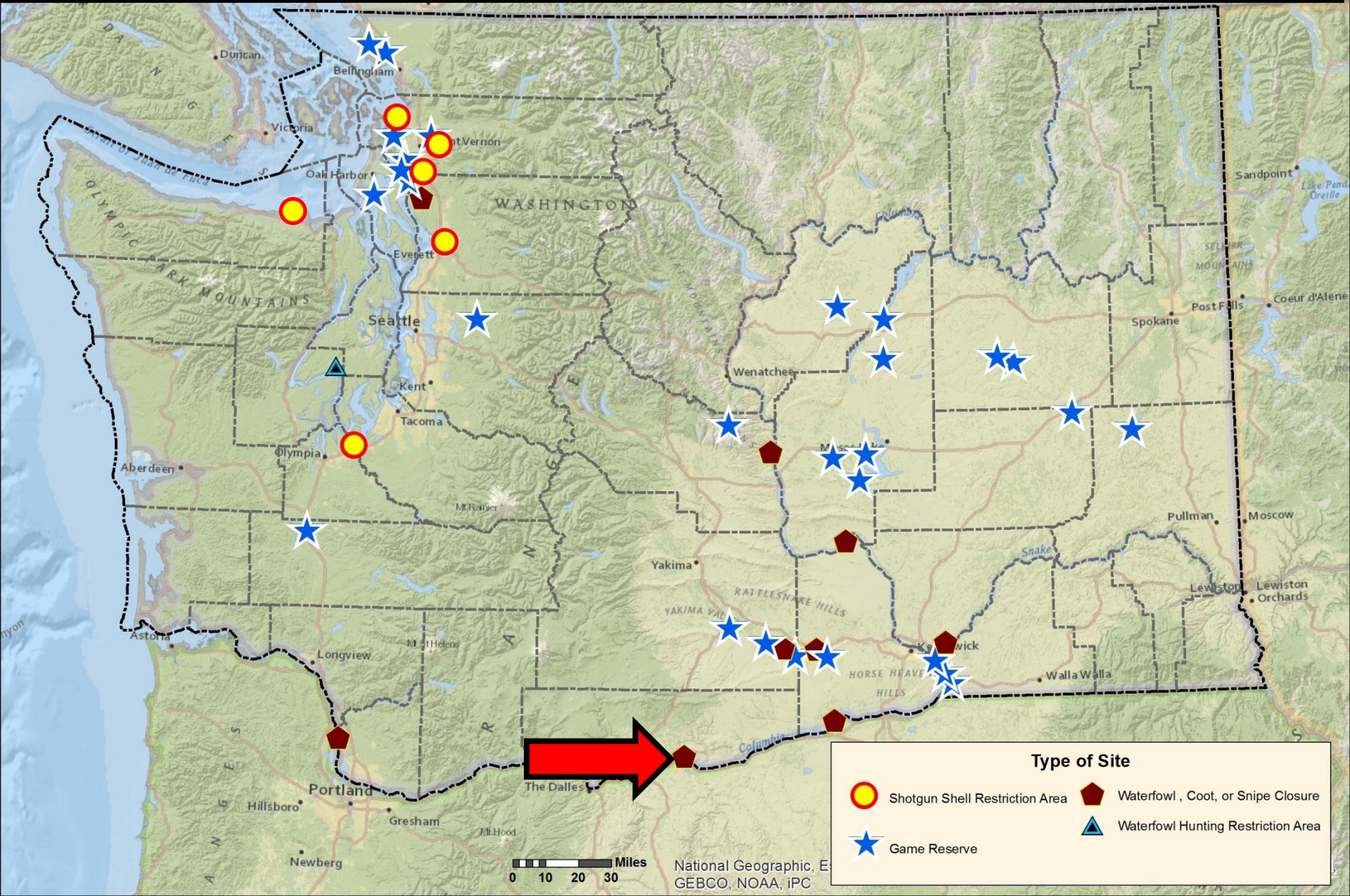
1:17,170

- Game Reserve Boundary
- Area Proposed for Removal
- WDFW Lands
- Wildlife Area Boundary

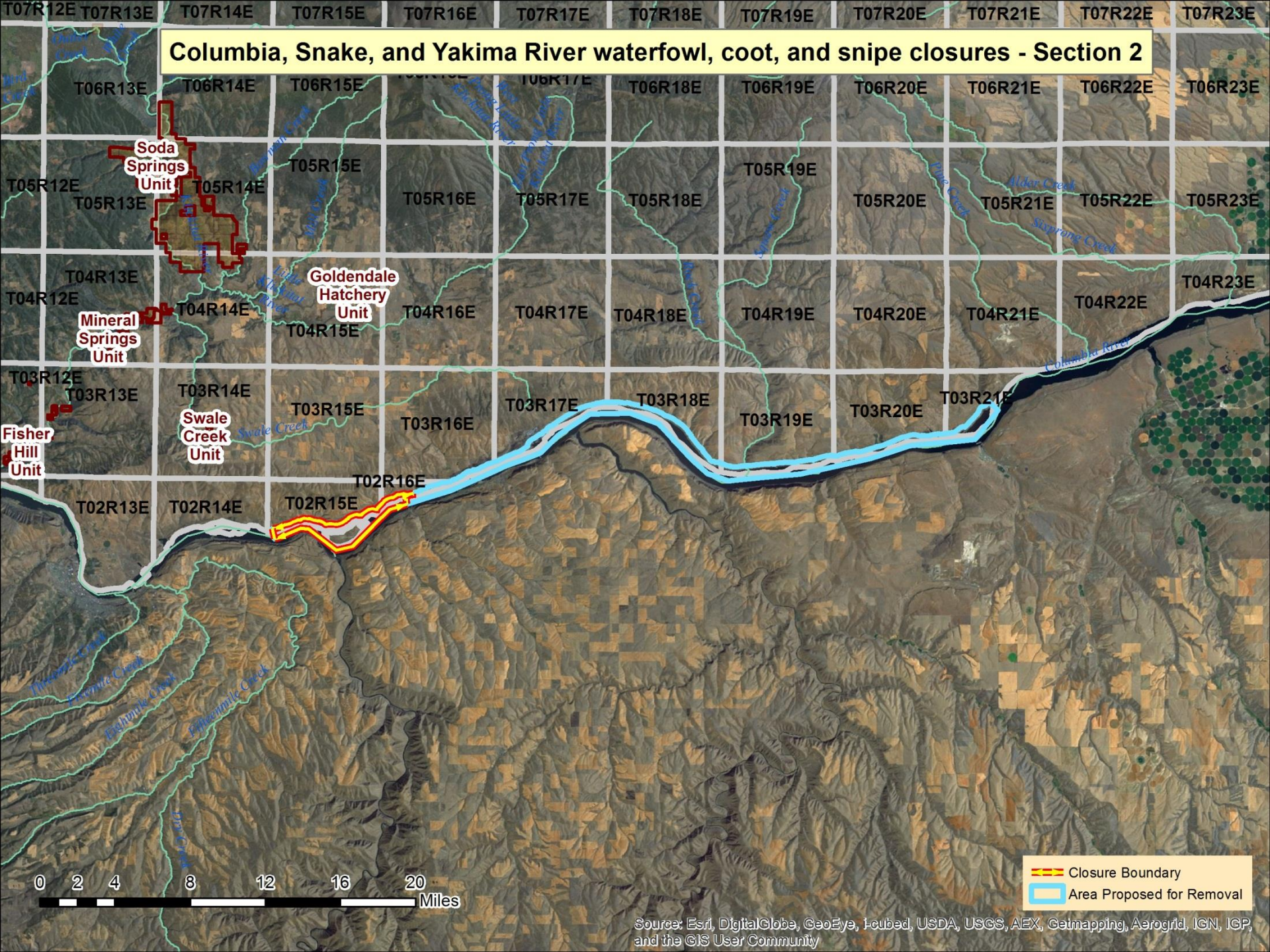
Major Changes

- 232-16-600 North Potholes Game Reserve
 - reduce size and create quality hunt area
- 232-16-640 Winchester Wasteway Game Reserve
 - reduce size and expand quality hunt area
- **232-16-740 Columbia, Snake, and Yakima River waterfowl, coot, and snipe closures**
 - reduce size of Section 2 closure
 - eliminate Section 8 (Yakima River)
- 232-16-750 Belfair, Hood Canal hunting area restriction
 - expand and clarify quality hunt area
- 232-16-770 Shotgun shell restriction areas
 - add 3 quality hunt areas

Columbia, Snake, and Yakima River Waterfowl Coot, and Snipe Closures – Section 2



Columbia, Snake, and Yakima River waterfowl, coot, and snipe closures - Section 2

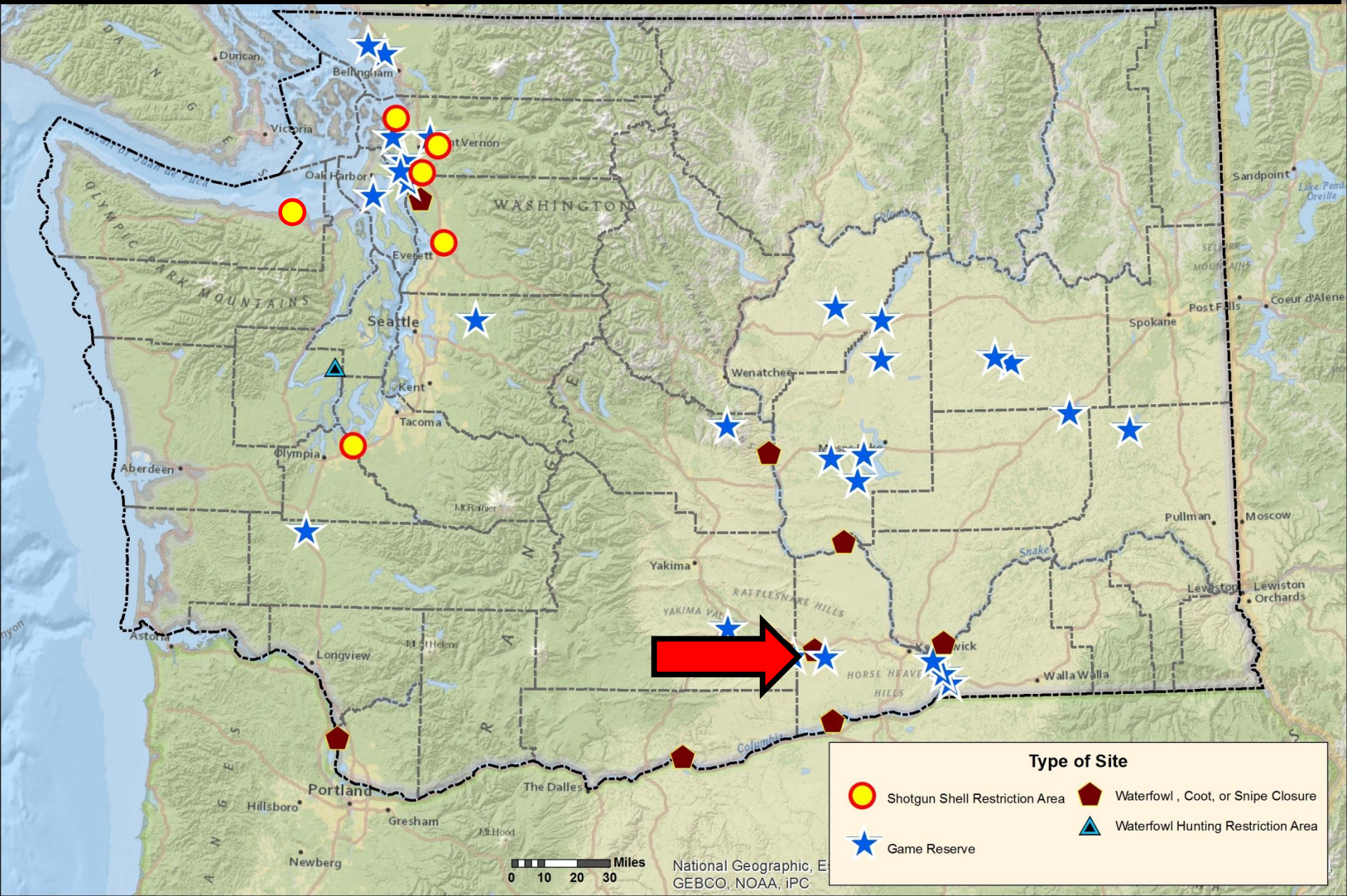


0 2 4 8 12 16 20 Miles

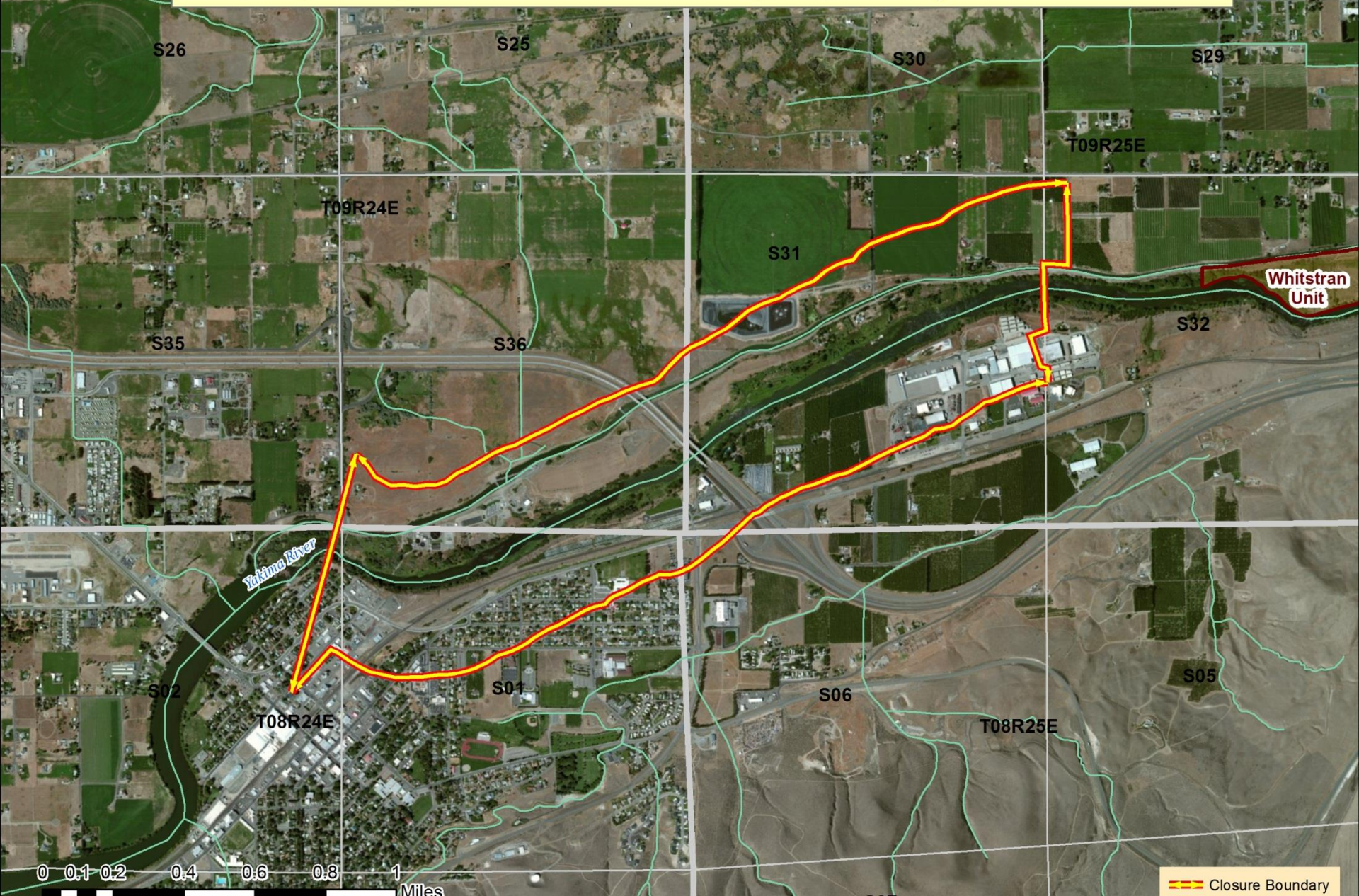
Closure Boundary
 Area Proposed for Removal


Source: Esri, DigitalGlobe, GeoEye, i-cubed, USDA, USGS, AEX, Getmapping, Aerogrid, IGN, ICP, and the GIS User Community

Columbia, Snake, and Yakima River Waterfowl Coot, and Snipe Closures – Section 8



Columbia, Snake, and Yakima River waterfowl, coot, and snipe closures - Section 8



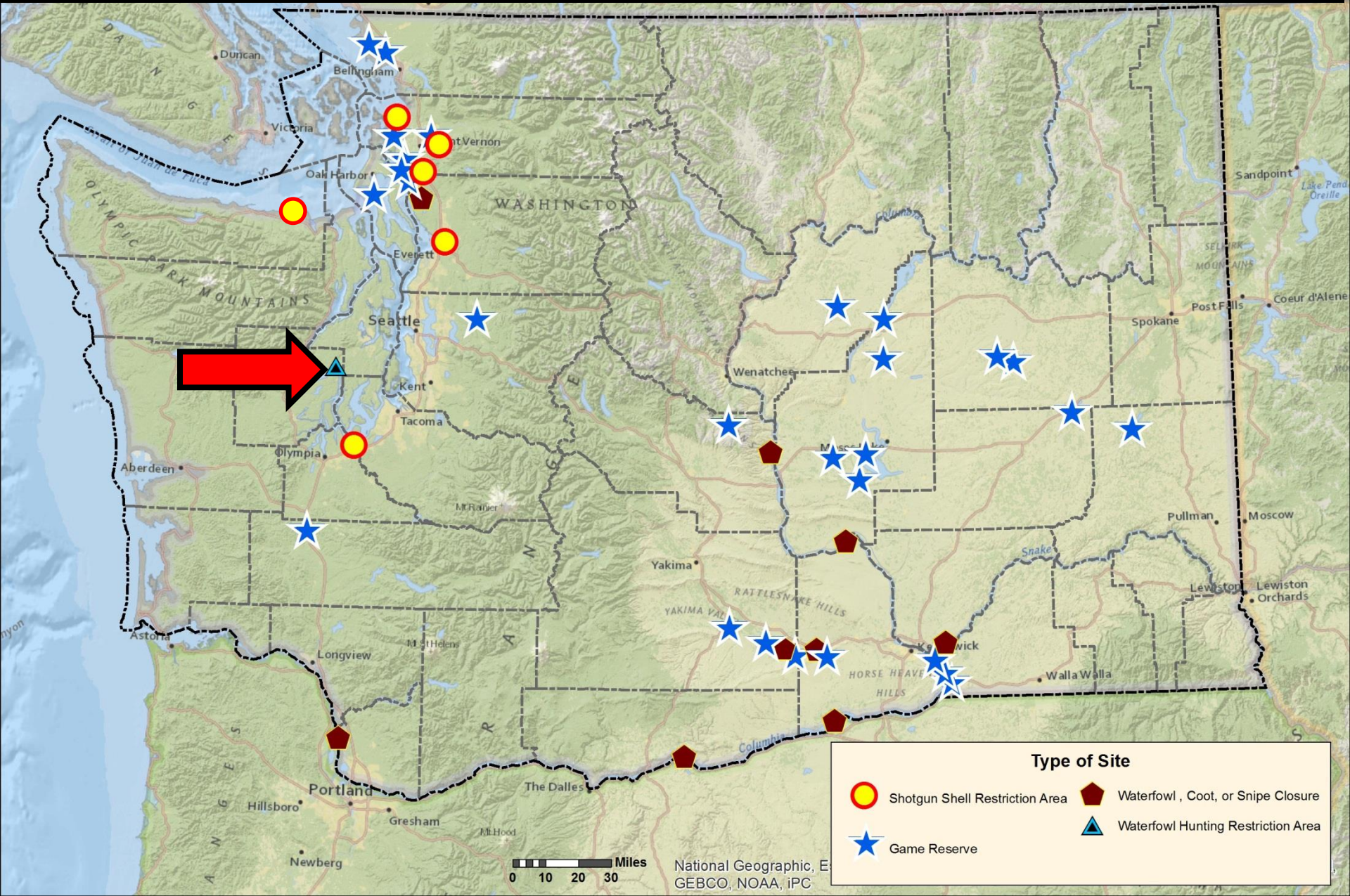
 Closure Boundary

Source: Esri, DigitalGlobe, GeoEye, i-cubed, USDA, USGS, AEX, Getmapping, Aerogrid, ICN, ICP, and the GIS User Community

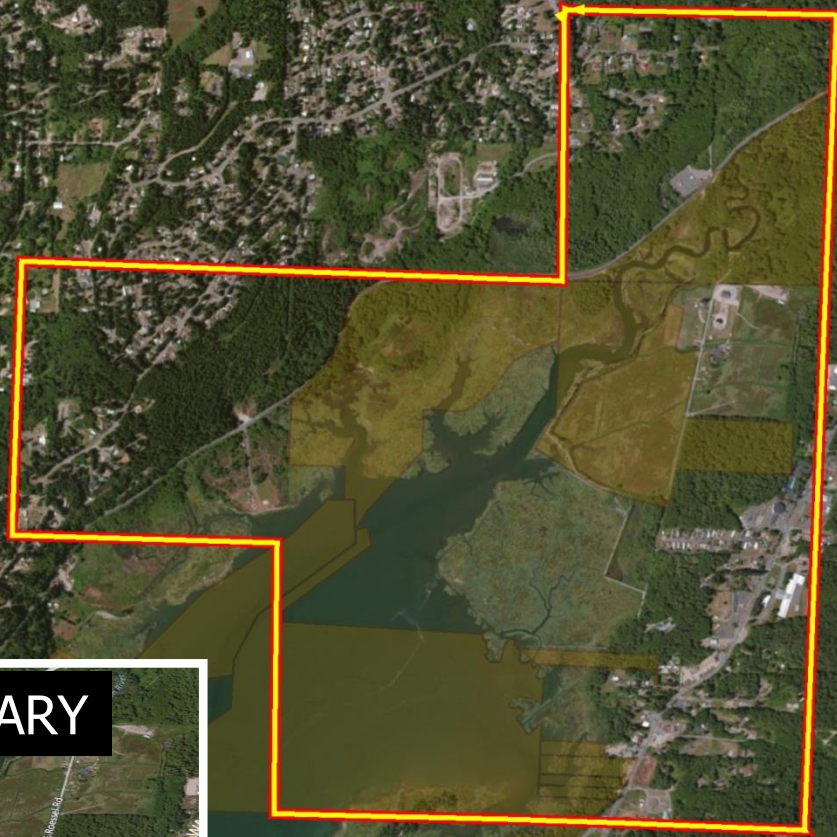
Major Changes

- 232-16-600 North Potholes Game Reserve
 - reduce size and create quality hunt area
- 232-16-640 Winchester Wasteway Game Reserve
 - reduce size and expand quality hunt area
- 232-16-740 Columbia, Snake, and Yakima River waterfowl, coot, and snipe closures
 - reduce size of Section 2 closure
 - eliminate Section 8
- **232-16-750 Belfair, Hood Canal hunting area restriction**
 - expand and clarify quality hunt area
- 232-16-770 Shotgun shell restriction areas
 - add 3 quality hunt areas

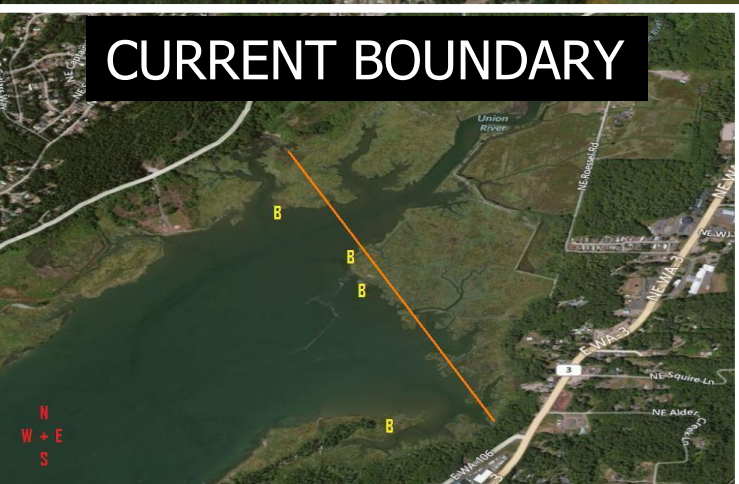
Lynch Cove and Union River Hunting Restriction Area



Lynch Cove and Union River Hunting Restriction Area



CURRENT BOUNDARY



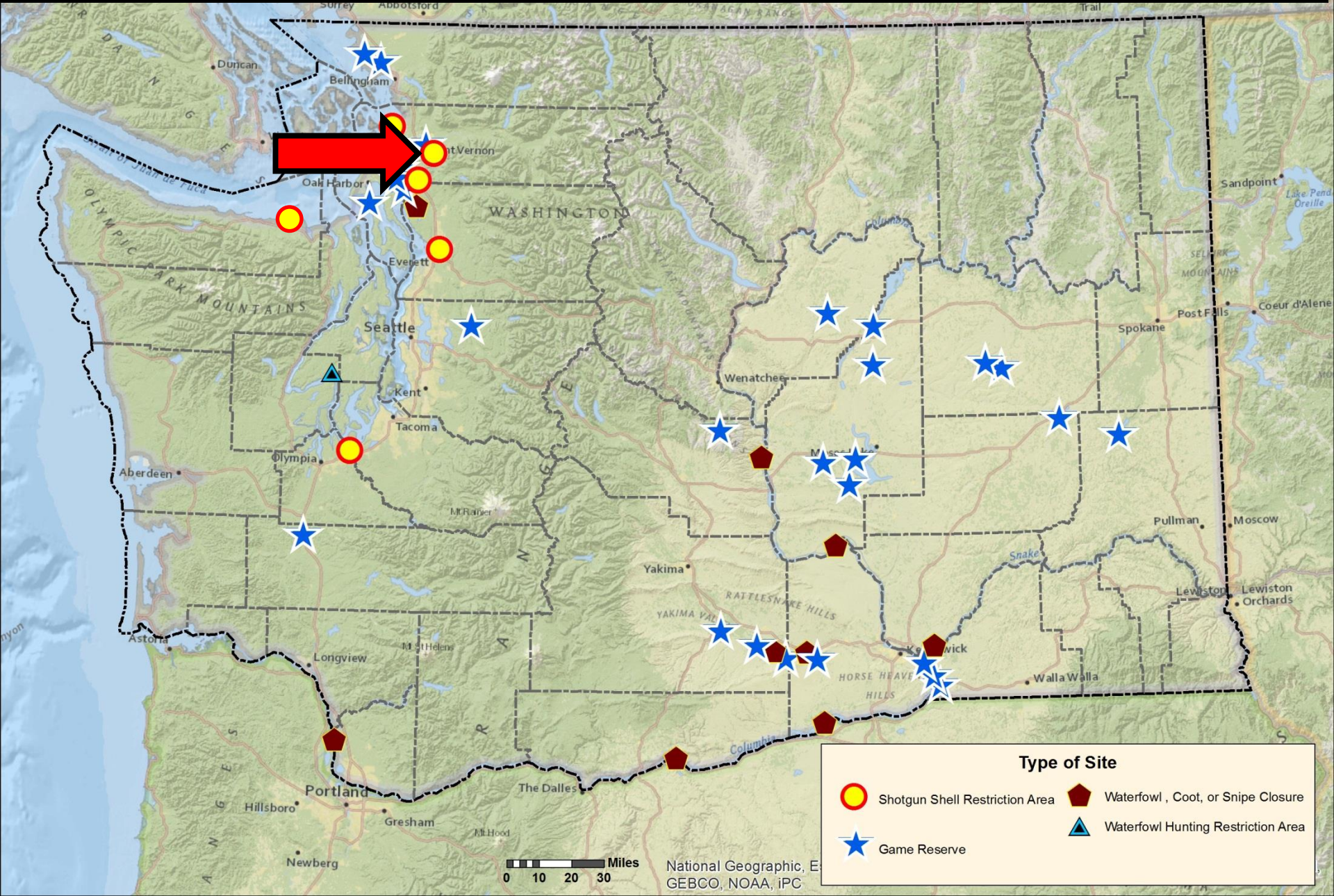
-  Hunting Area Restriction boundary
-  WDFW Lands

Source: Esri, DigitalGlobe, GeoEye, i-cubed, USDA, USGS, AEX, Getmapping, Aerogrid, ICN, ICP, and the GIS User Community

Major Changes

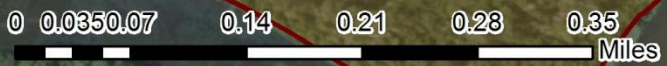
- 232-16-600 North Potholes Game Reserve
 - reduce size and create quality hunt area
- 232-16-640 Winchester Wasteway Game Reserve
 - reduce size and expand quality hunt area
- 232-16-740 Columbia, Snake, and Yakima River waterfowl, coot, and snipe closures
 - reduce size of Section 2 closure
 - eliminate Section 8
- 232-16-750 Belfair, Hood Canal hunting area restriction
 - expand and clarify quality hunt area
- **232-16-770 Shotgun shell restriction areas**
 - add 3 new quality hunt areas

Shotgun Shell Restriction Areas – Johnson / Debays

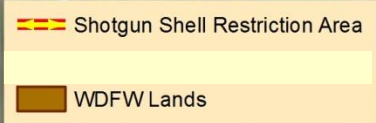


Johnson - Debays Slough Unit Shotgun Shell Restriction Area

Debay
Slough
Unit

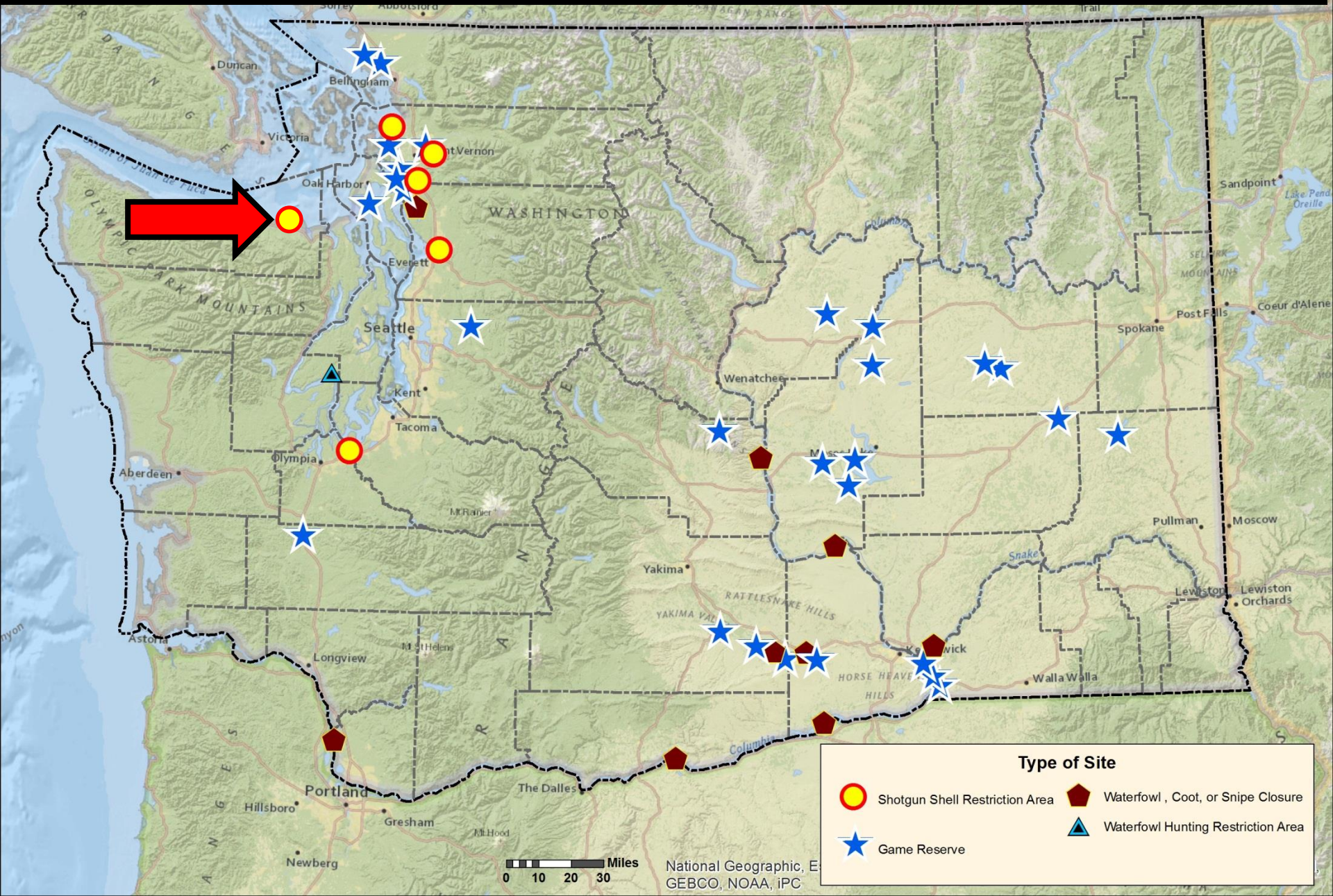


1:7,380



Source: Esri, DigitalGlobe, GeoEye, i-cubed, USDA, USGS, AEX, Getmapping, Aerogrid, IGN, IGP, and the GIS User Community

Shotgun Shell Restriction Areas – Clallam County



Clallam County Shotgun Shell Restriction Area



Lower
Dungeness
Unit

NOTE: RECOMMENDED ADJUSTMENT

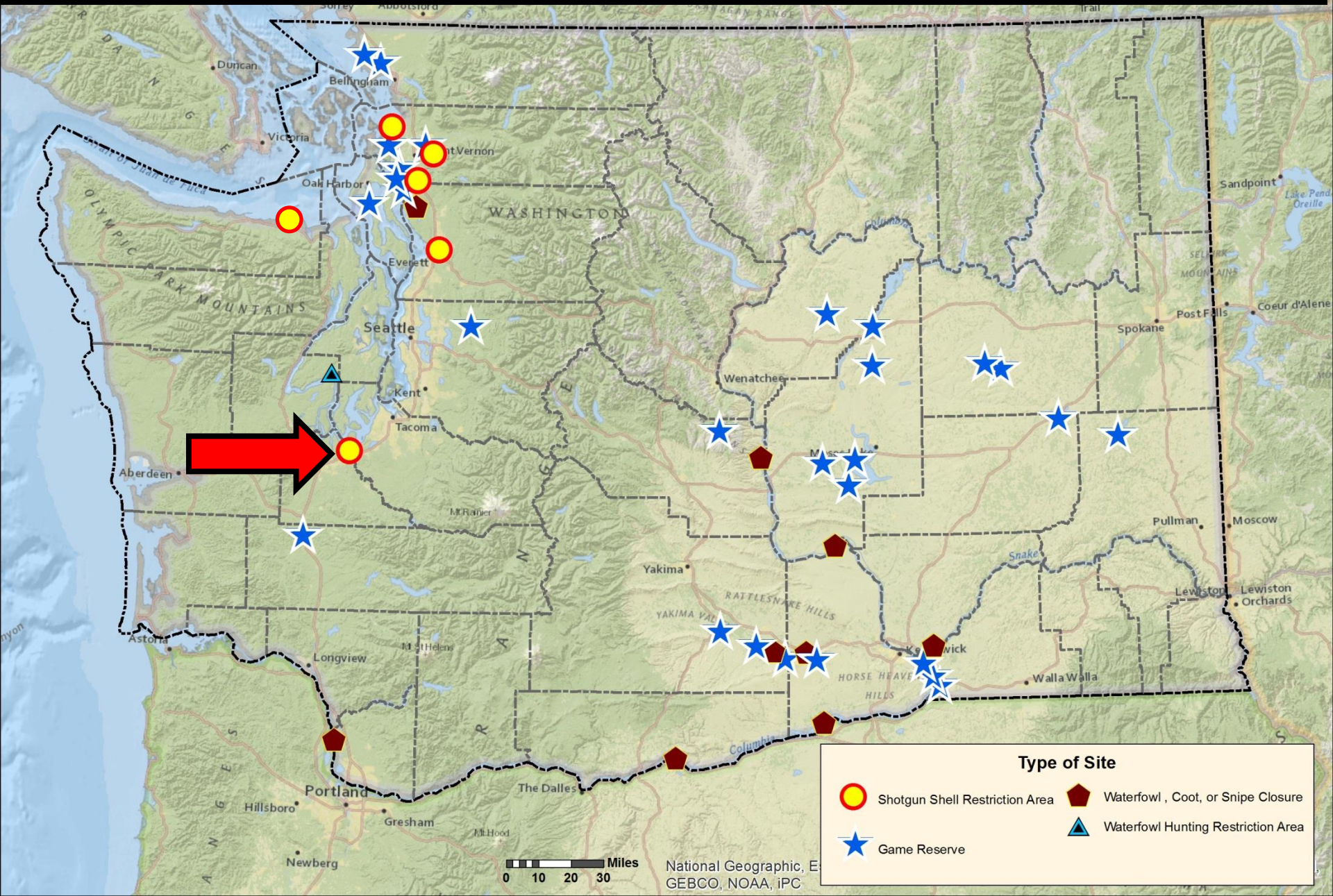
0 0.0425.085 0.17 0.255 0.34 0.425
Miles

1:9,250

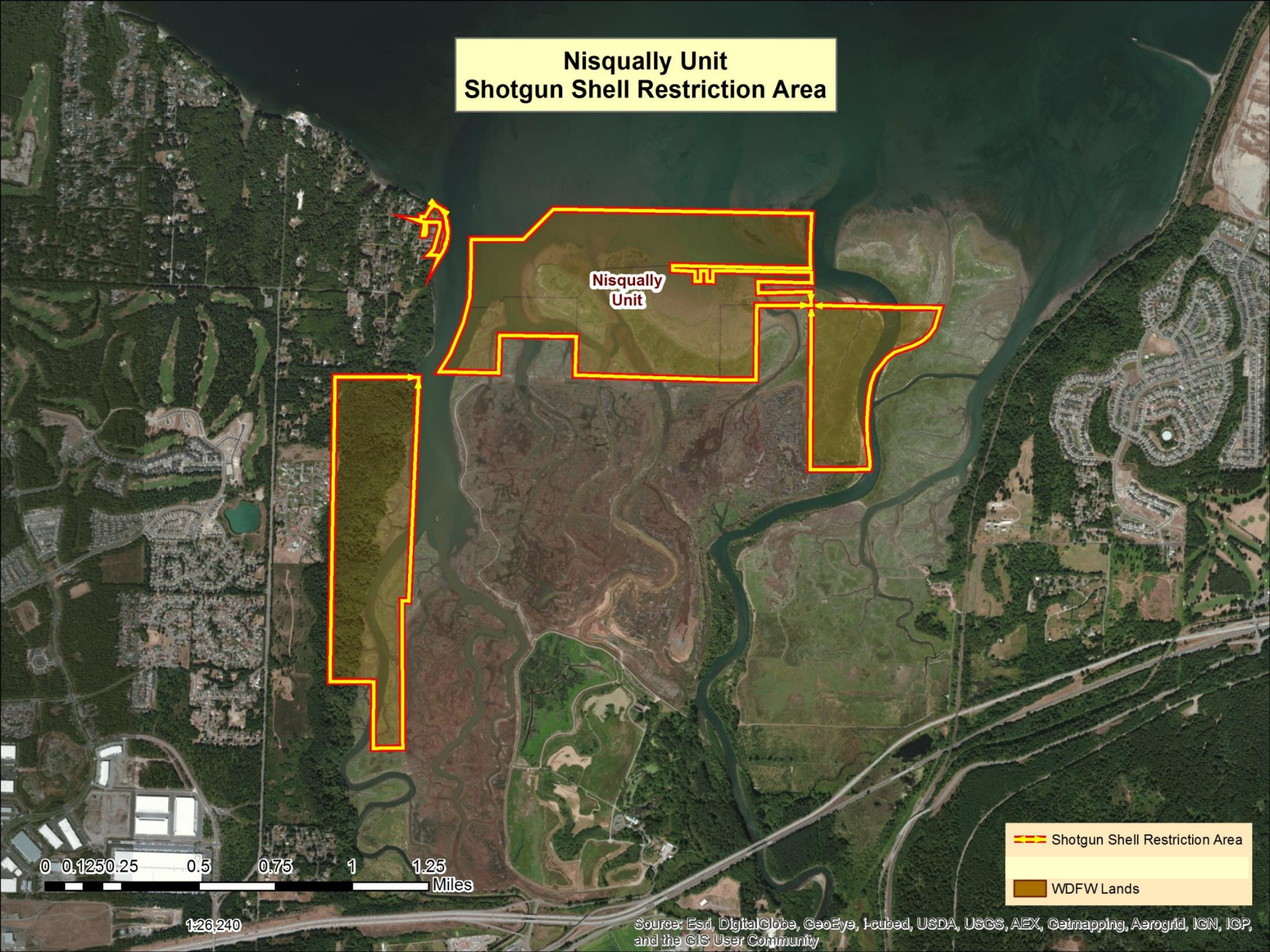
- Shotgun Shell Restriction Area
- WDFW Lands

Source: Esri, DigitalGlobe, GeoEye, i-cubed, USDA, USGS, AEX, Getmapping, Aerogrid, IGN, IGP, and the GIS User Community

Shotgun Shell Restriction Areas – Nisqually Unit



Nisqually Unit Shotgun Shell Restriction Area



Nisqually
Unit

- Shotgun Shell Restriction Area
- WDFW Lands

0 0.125 0.25 0.5 0.75 1 1.25 Miles

126,240

Source: Esri, DigitalGlobe, GeoEye, I-cubed, USDA, USGS, AEX, Getmapping, Aerogrid, IGN, IGP, and the GIS User Community

Additional Rule Amendments

WAC 232-12-068 Nontoxic Shot Requirements

- Goal: clarify and update current requirements
- 2009-11: phase-in of nontoxic shot requirements to all pheasant release sites (listed in WAC)
- 2012-14: new pheasant release sites added and others discontinued (WAC list not updated)
- Proposed amendments:
 - Remove list of 2019-11 release sites
 - Add new language referring to all WDFW designated pheasant release sites
 - Add new shot type (copper-clad iron) [adjustment]

Additional Rule Amendments

WAC 232-28-299 Mandatory Report of Hunting Activity

- Goal: consolidate and clarify current rules
- Mandatory reporting for migratory birds initiated in 1990, non-reporting penalties added in 2013
- Proposed amendments:
 - No change to current big game, bear, and turkey reporting requirements (clarifications added)
 - Add current migratory bird reporting requirements
 - Retain maximum of one \$10 fee for all game species reporting violations during a license year
 - Allow removal of reporting language from WAC 232-28-436 and WAC 232-28-342

Questions?

