

Moose, Mountain Goat, and  
Bighorn Seasons and Permit  
Quotas – and Related Revisions  
To Auction/Raffle and Bighorn  
Marking WACs

Rich Harris, Special Species Section Manager,  
Game Division, Wildlife Program

# 232-28-273 – Moose Recommendations:

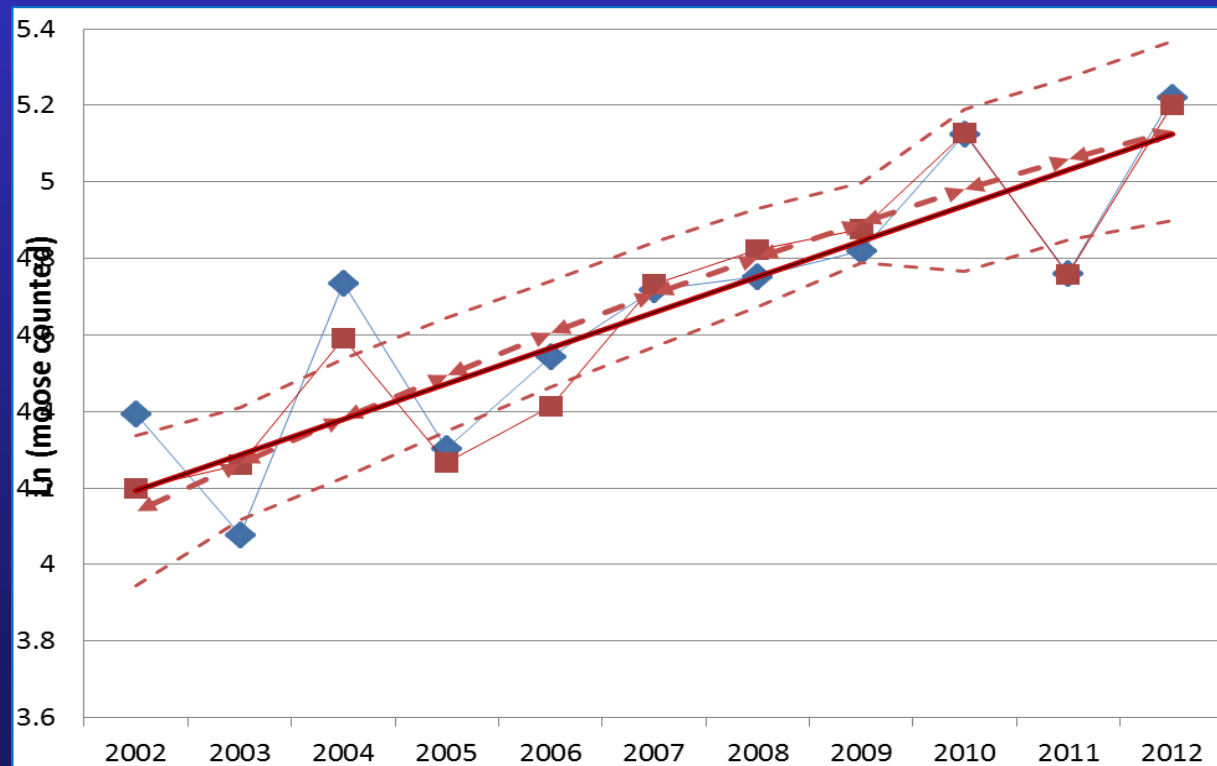


\* A substantial (~ 25%)  
increase in permit  
levels

\* Increase in total permits from 136 (86 any  
moose, 50 antlerless) to 170 (107 any, 63  
antlerless)

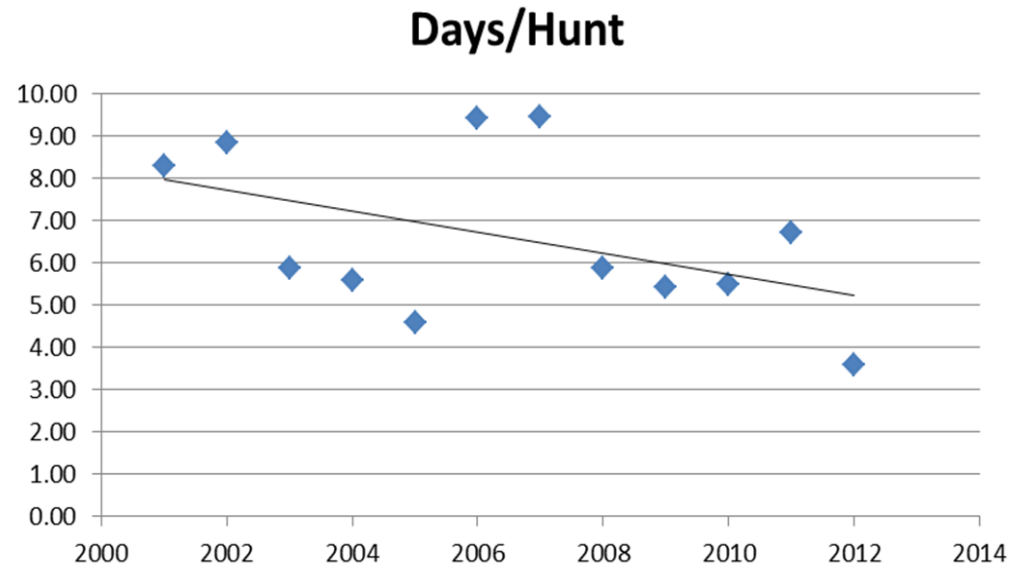
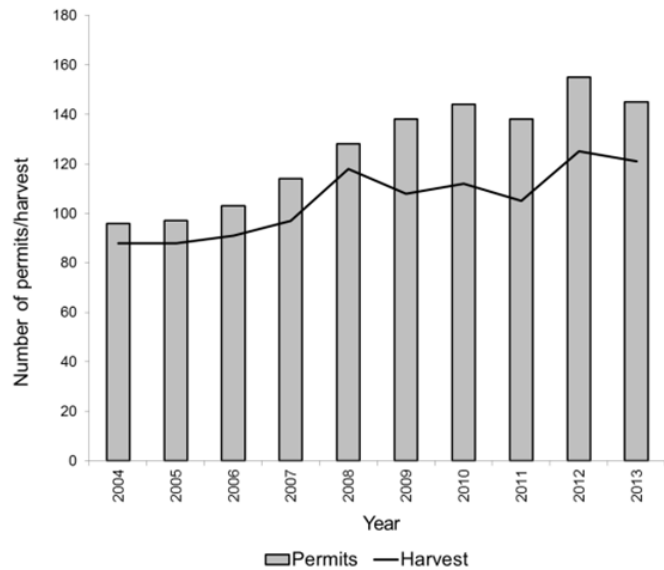
# Additional Moose Harvest: Justification

1. Population size
2. Population trend



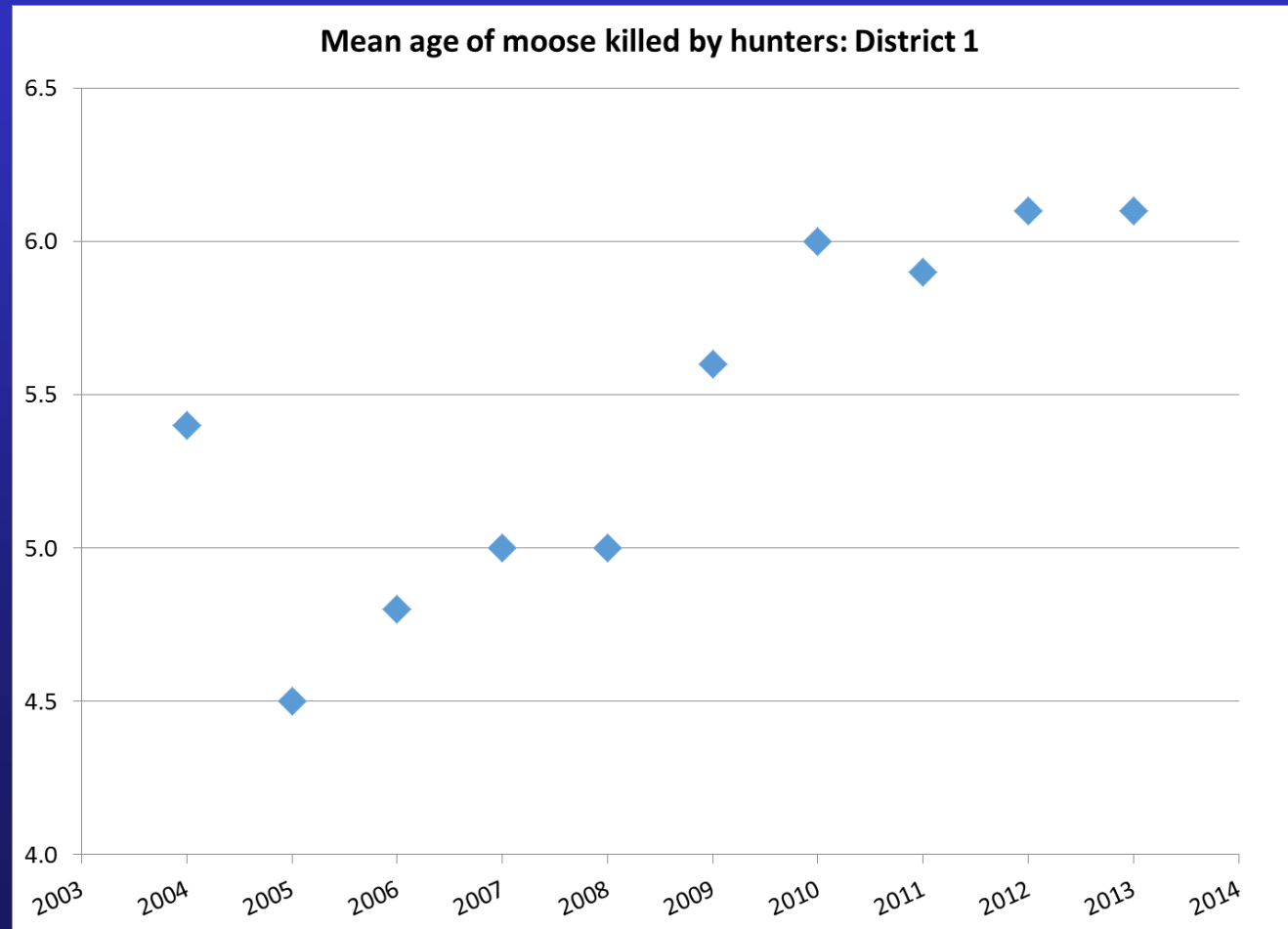
# Additional Moose Harvest: Justification

## 3. Catch per hunter unit effort

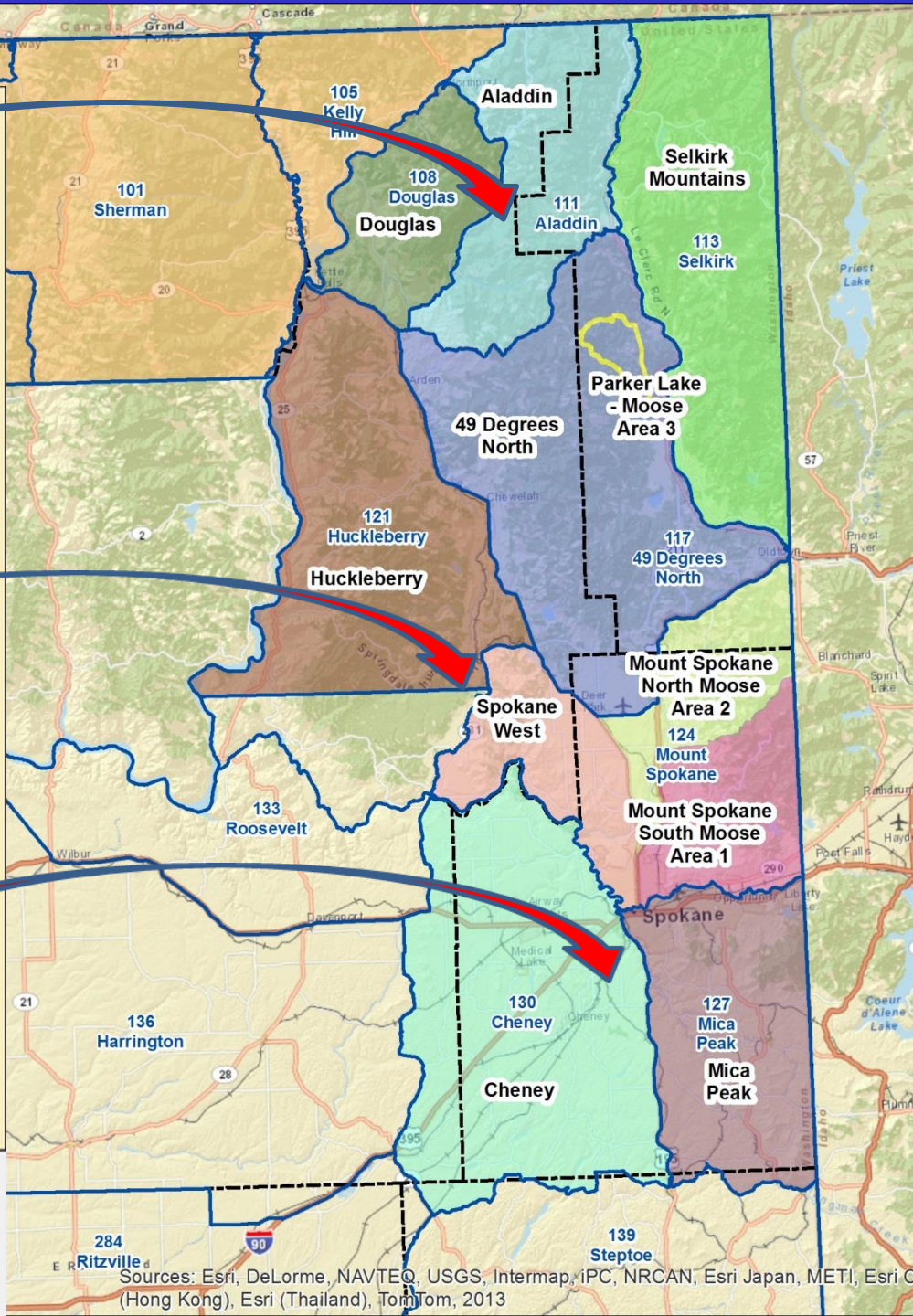
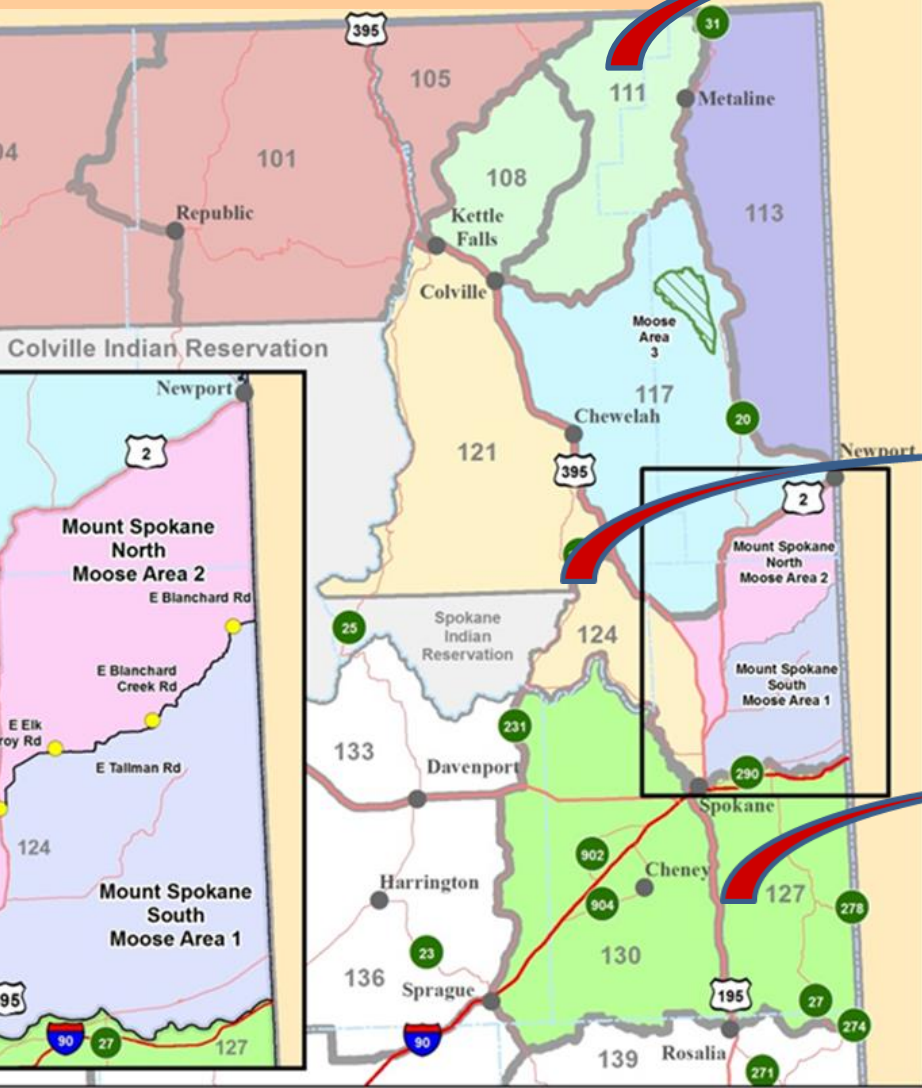


# Additional Moose Harvest: Justification

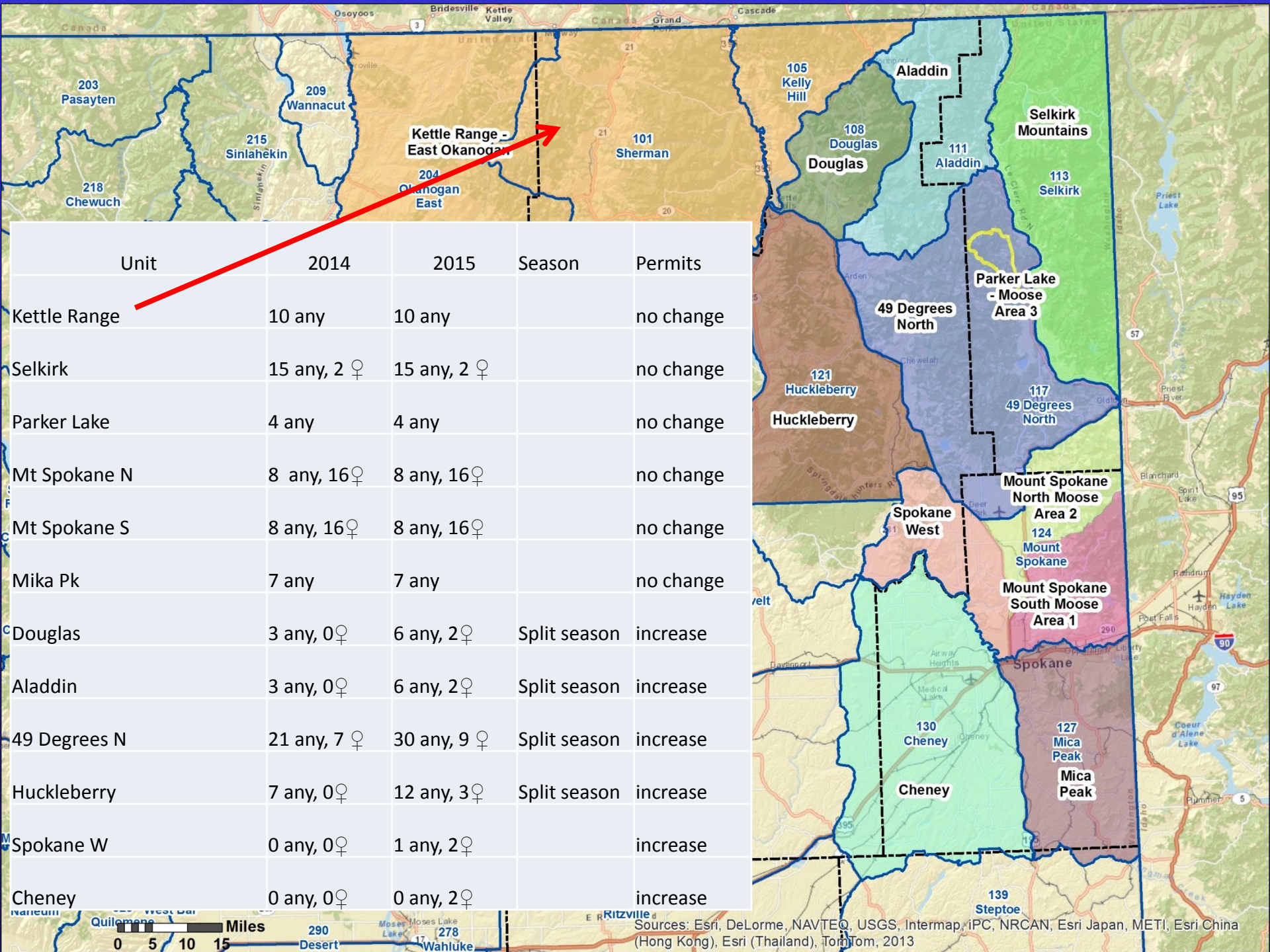
## 4. Age of moose killed by hunters

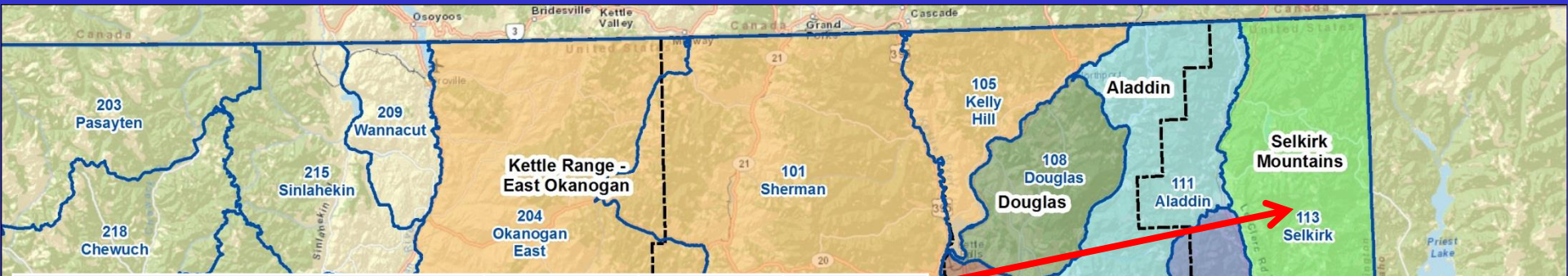


# 2014 (old) moose units

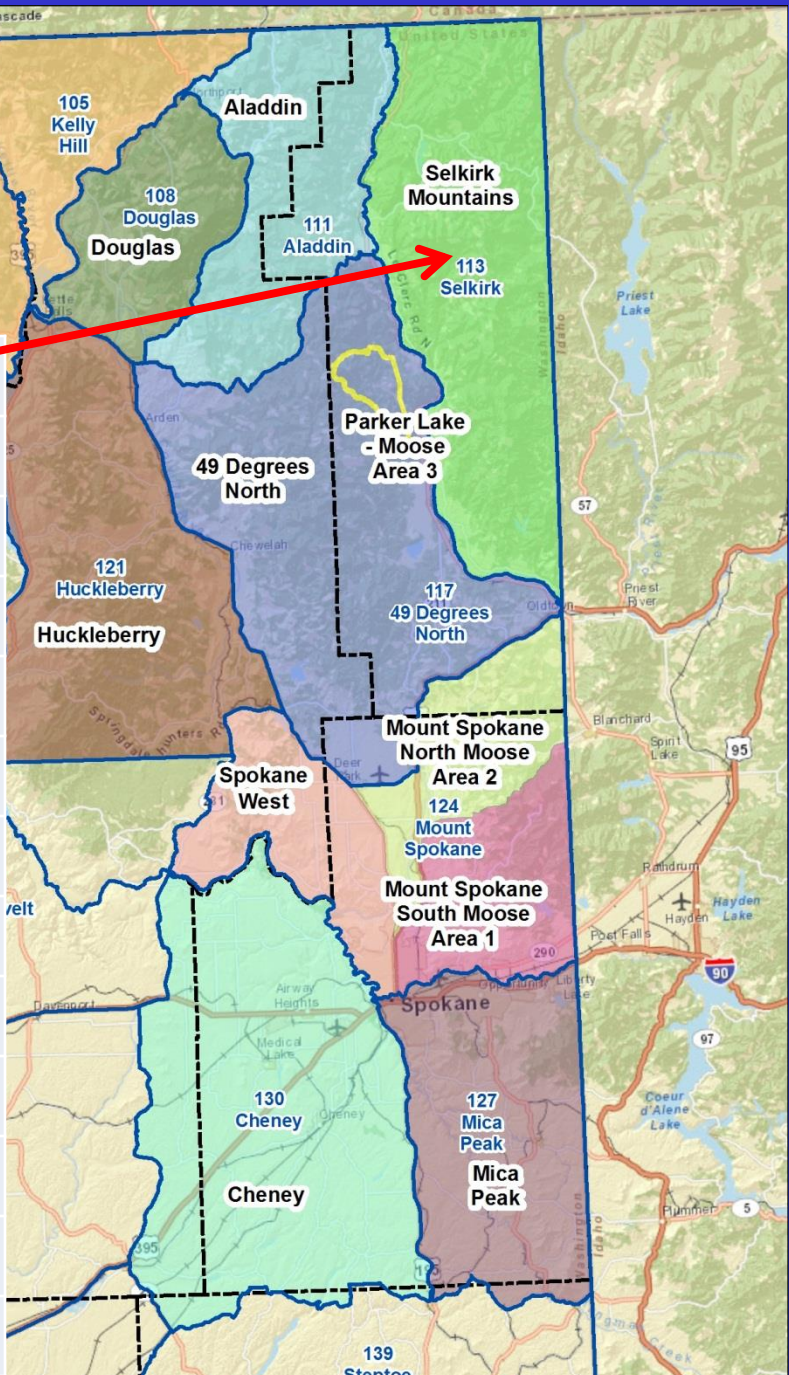


Sources: Esri, DeLorme, NAVTEQ, USGS, Intermap, iPC, NRCAN, Esri Japan, METI, Esri C (Hong Kong), Esri (Thailand), TomTom, 2013



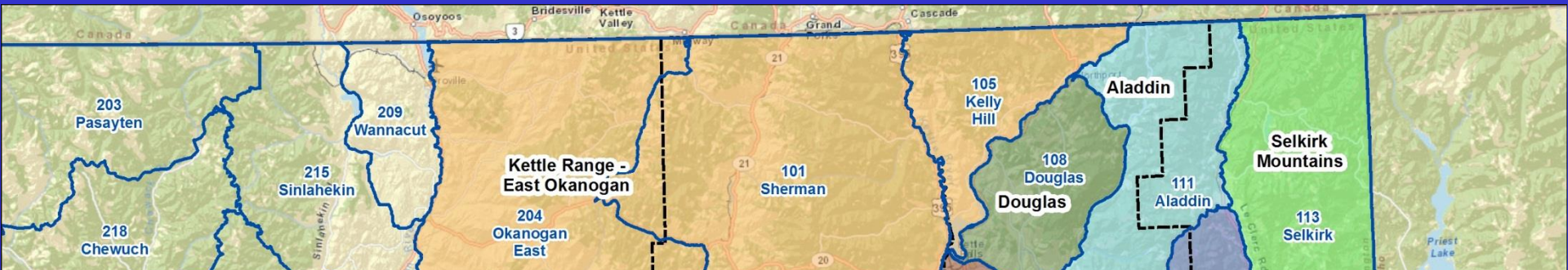


Unit	2014	2015	Season	Permits
Kettle Range	10 any	10 any		no change
Selkirk	15 any, 2 ♀	15 any, 2 ♀		no change
Parker Lake	4 any	4 any		no change
Mt Spokane N	8 any, 16 ♀	8 any, 16 ♀		no change
Mt Spokane S	8 any, 16 ♀	8 any, 16 ♀		no change
Mika Pk	7 any	7 any		no change
Douglas	3 any, 0 ♀	6 any, 2 ♀	Split season	increase
Aladdin	3 any, 0 ♀	6 any, 2 ♀	Split season	increase
49 Degrees N	21 any, 7 ♀	30 any, 9 ♀	Split season	increase
Huckleberry	7 any, 0 ♀	12 any, 3 ♀	Split season	increase
Spokane W	0 any, 0 ♀	1 any, 2 ♀		increase
Cheney	0 any, 0 ♀	0 any, 2 ♀		increase

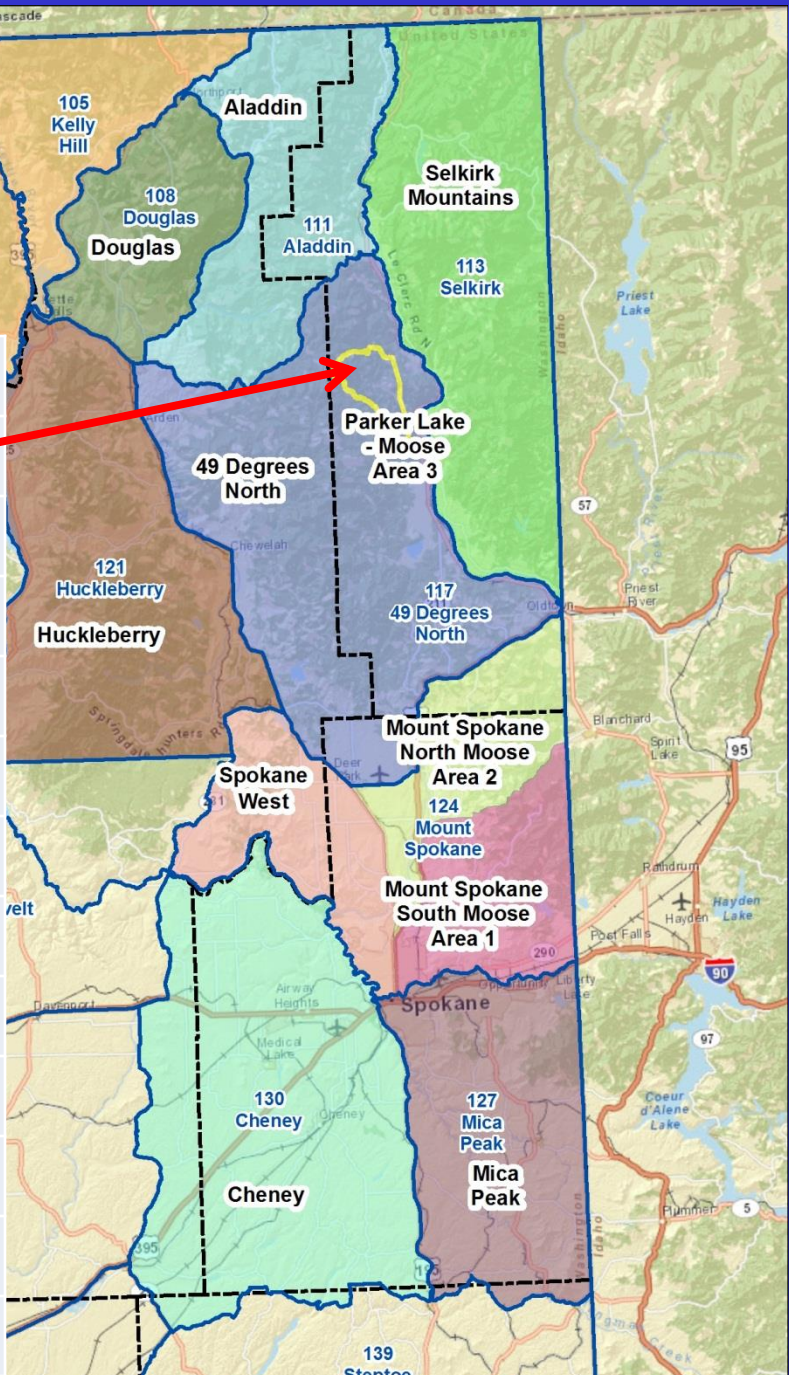


Sources: Esri, DeLorme, NAVTEQ, USGS, Intermap, iPC, NRCAN, Esri Japan, METI, Esri China (Hong Kong), Esri (Thailand), TomTom, 2013

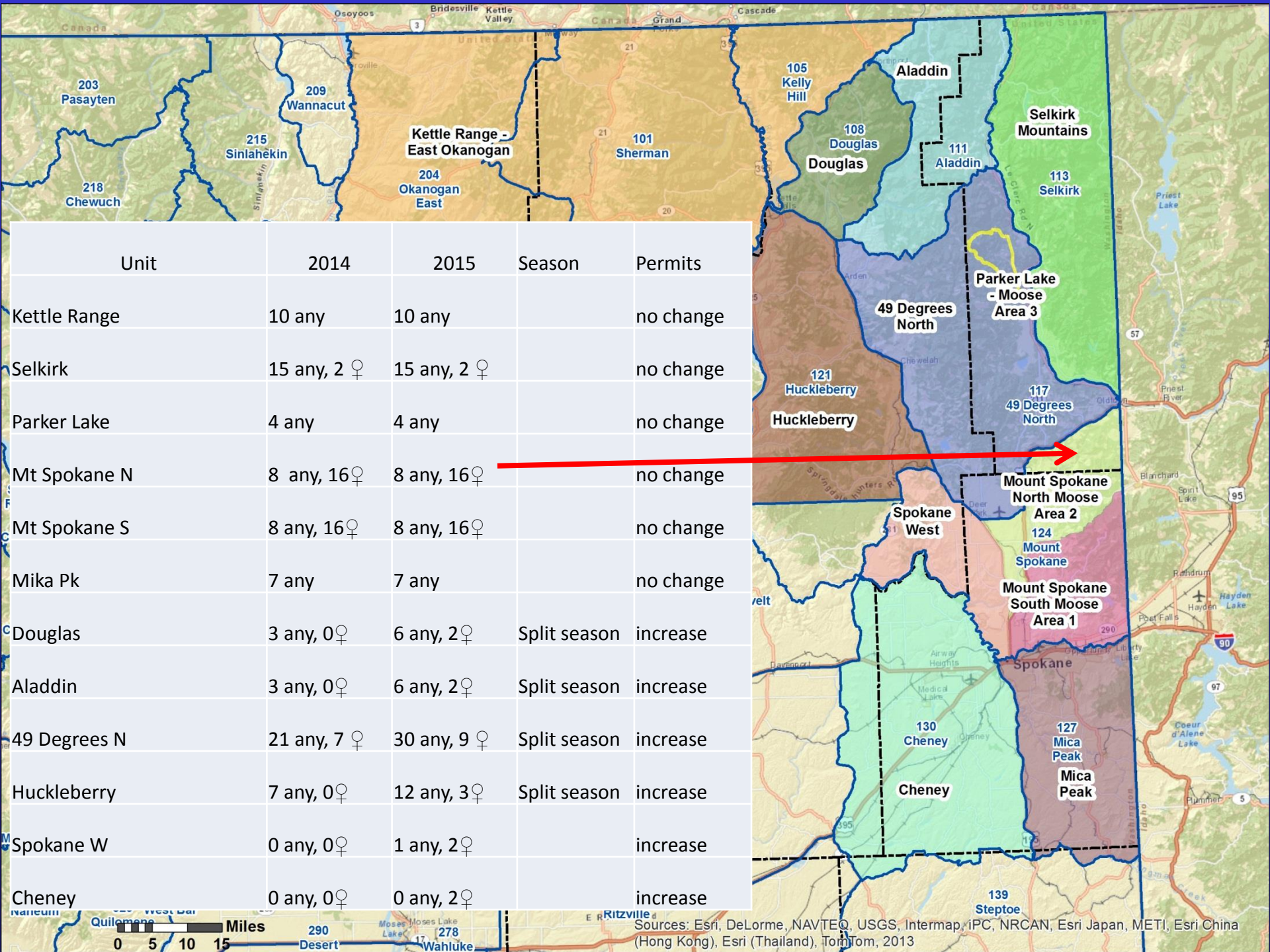




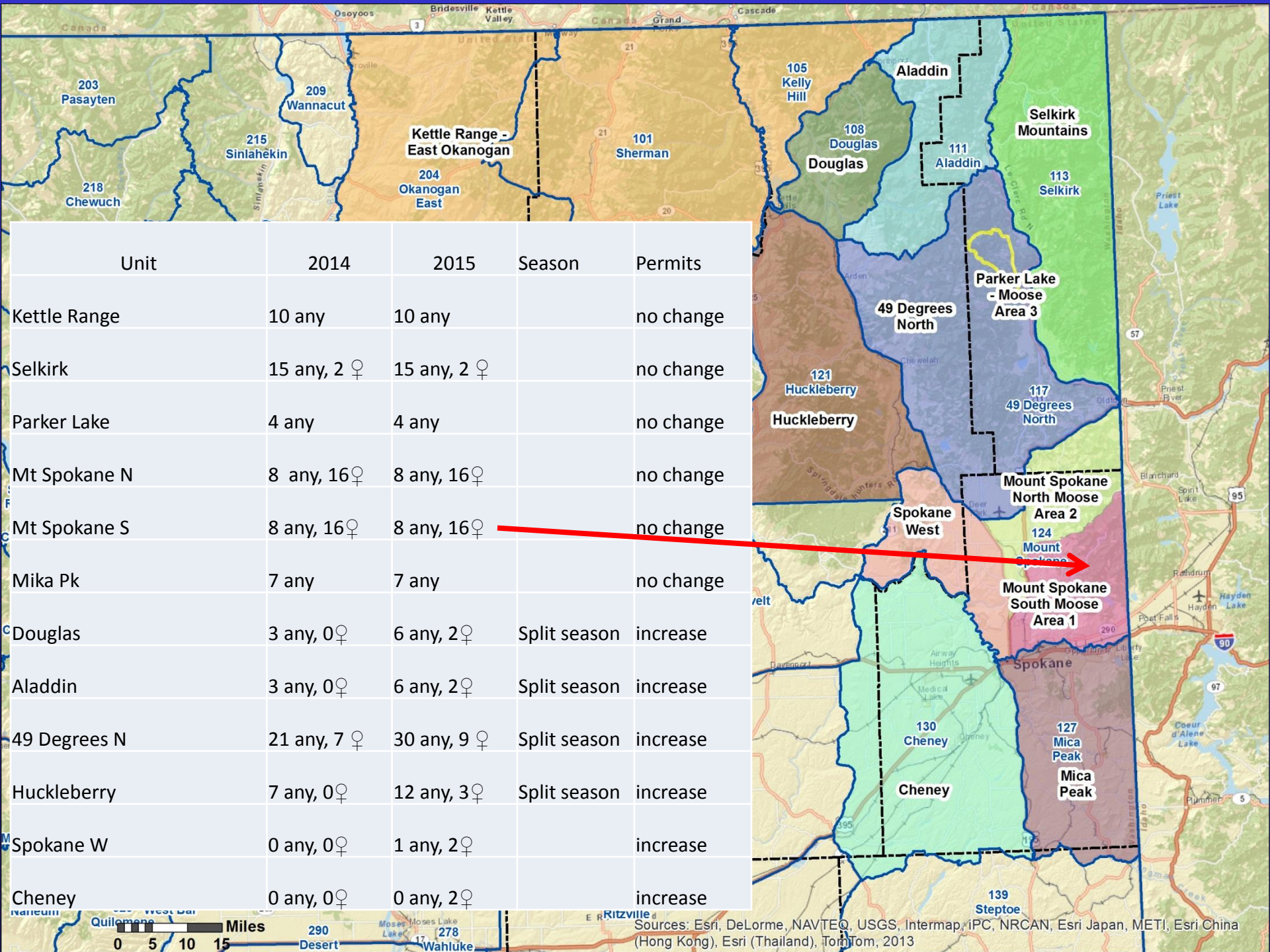
Unit	2014	2015	Season	Permits
Kettle Range	10 any	10 any		no change
Selkirk	15 any, 2 ♀	15 any, 2 ♀		no change
Parker Lake	4 any	4 any		no change
Mt Spokane N	8 any, 16 ♀	8 any, 16 ♀		no change
Mt Spokane S	8 any, 16 ♀	8 any, 16 ♀		no change
Mika Pk	7 any	7 any		no change
Douglas	3 any, 0 ♀	6 any, 2 ♀	Split season	increase
Aladdin	3 any, 0 ♀	6 any, 2 ♀	Split season	increase
49 Degrees N	21 any, 7 ♀	30 any, 9 ♀	Split season	increase
Huckleberry	7 any, 0 ♀	12 any, 3 ♀	Split season	increase
Spokane W	0 any, 0 ♀	1 any, 2 ♀		increase
Cheney	0 any, 0 ♀	0 any, 2 ♀		increase



Sources: Esri, DeLorme, NAVTEQ, USGS, Intermap, iPC, NRCAN, Esri Japan, METI, Esri China (Hong Kong), Esri (Thailand), TomTom, 2013

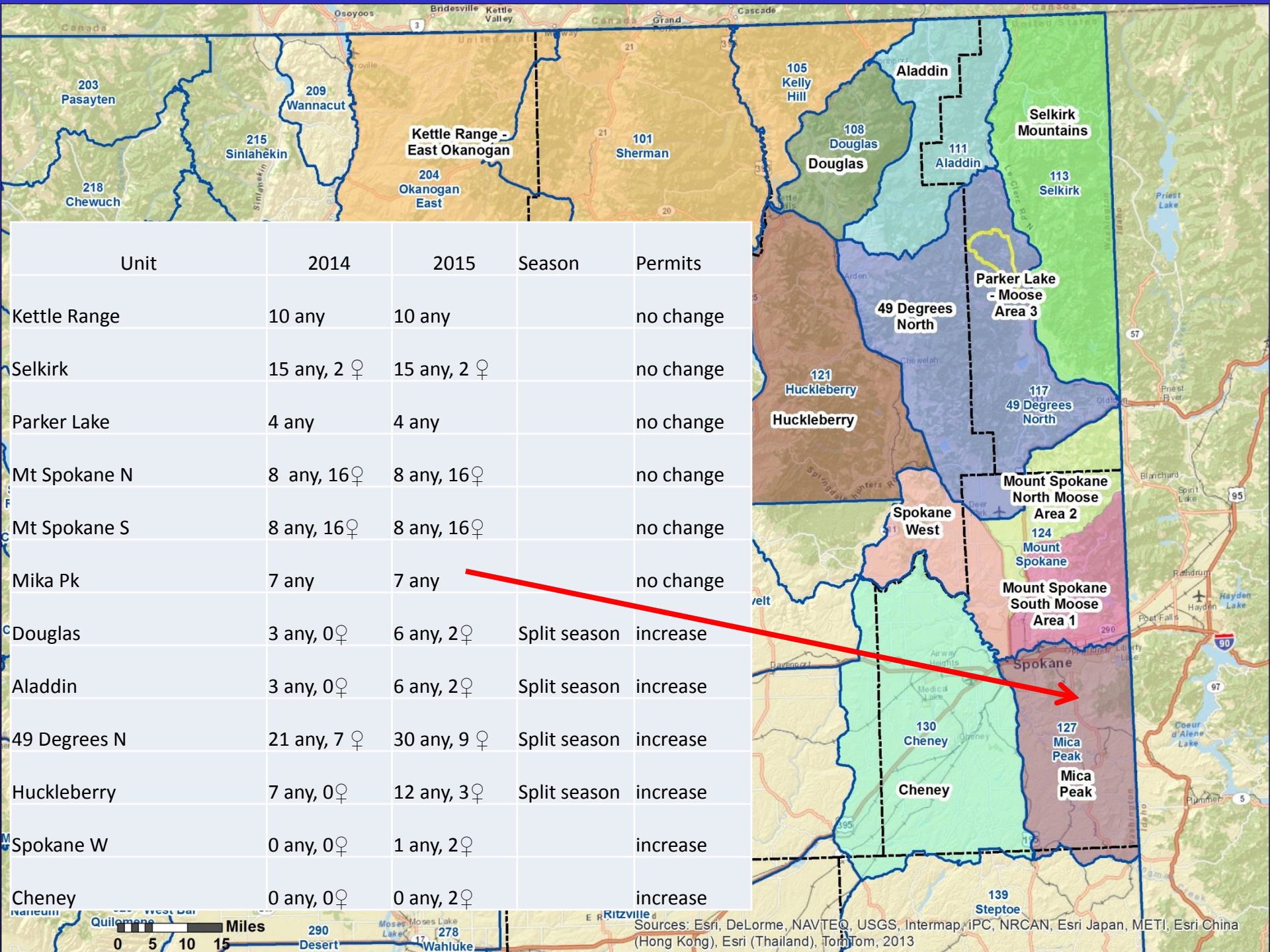


Sources: Esri, DeLorme, NAVTEQ, USGS, Intermap, iPC, NRCAN, Esri Japan, METI, Esri China (Hong Kong), Esri (Thailand), TomTom, 2013

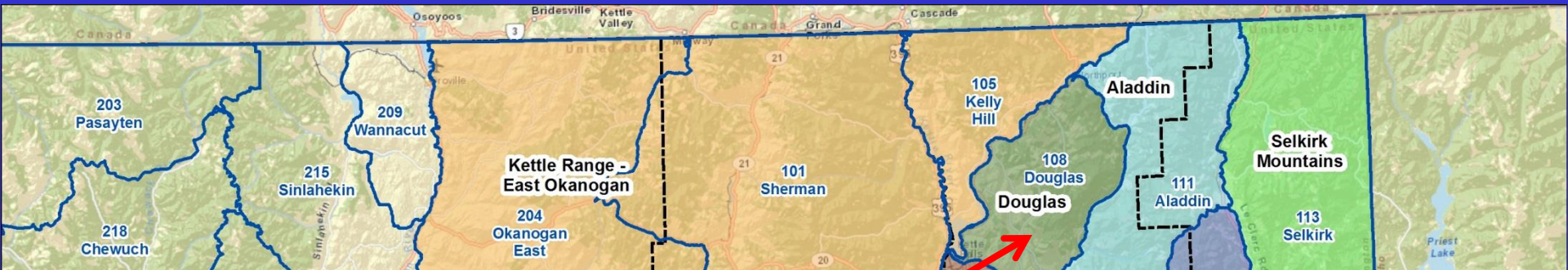


Unit	2014	2015	Season	Permits
Kettle Range	10 any	10 any		no change
Selkirk	15 any, 2 ♀	15 any, 2 ♀		no change
Parker Lake	4 any	4 any		no change
Mt Spokane N	8 any, 16 ♀	8 any, 16 ♀		no change
Mt Spokane S	8 any, 16 ♀	8 any, 16 ♀		no change
Mika Pk	7 any	7 any		no change
Douglas	3 any, 0 ♀	6 any, 2 ♀	Split season	increase
Aladdin	3 any, 0 ♀	6 any, 2 ♀	Split season	increase
49 Degrees N	21 any, 7 ♀	30 any, 9 ♀	Split season	increase
Huckleberry	7 any, 0 ♀	12 any, 3 ♀	Split season	increase
Spokane W	0 any, 0 ♀	1 any, 2 ♀		increase
Cheney	0 any, 0 ♀	0 any, 2 ♀		increase

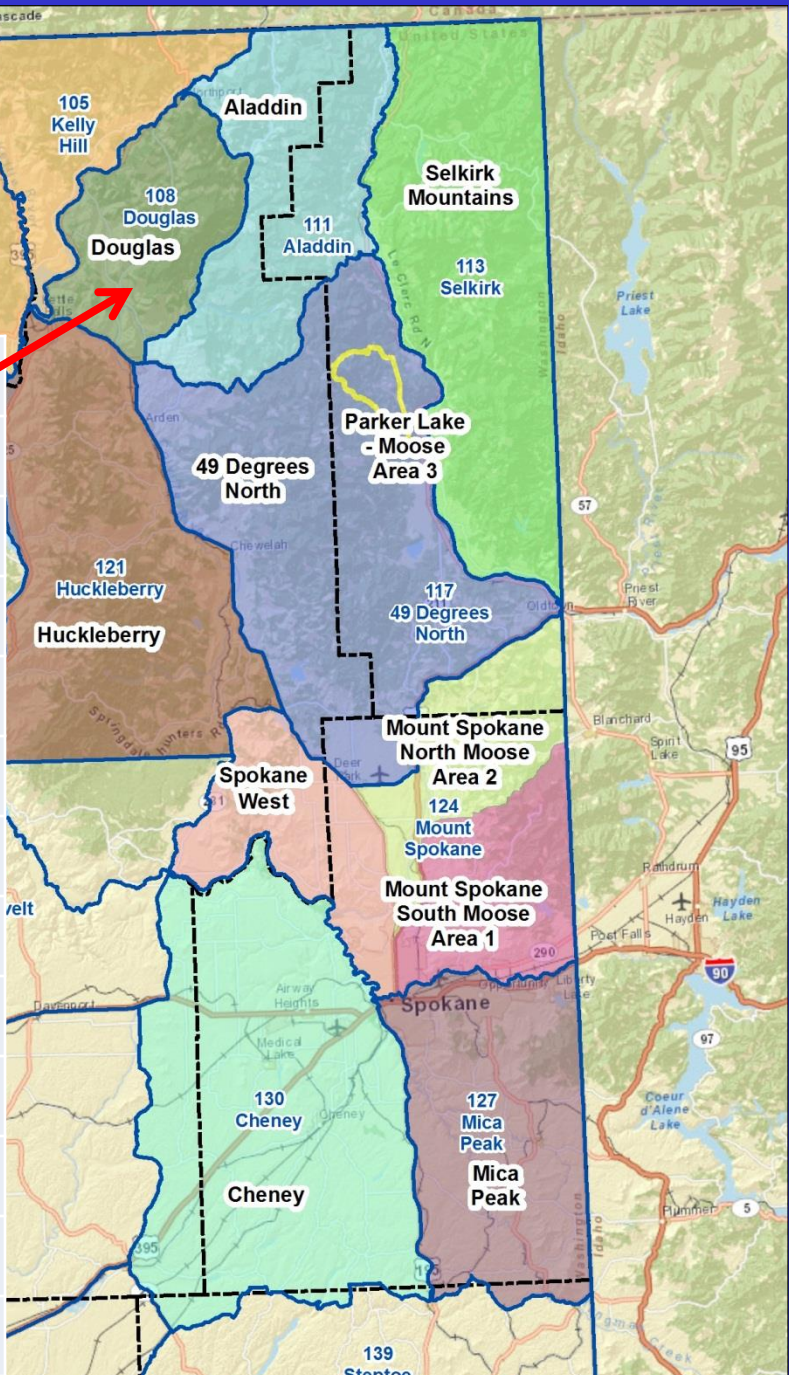
Sources: Esri, DeLorme, NAVTEQ, USGS, Intermap, iPC, NRCAN, Esri Japan, METI, Esri China (Hong Kong), Esri (Thailand), TomTom, 2013



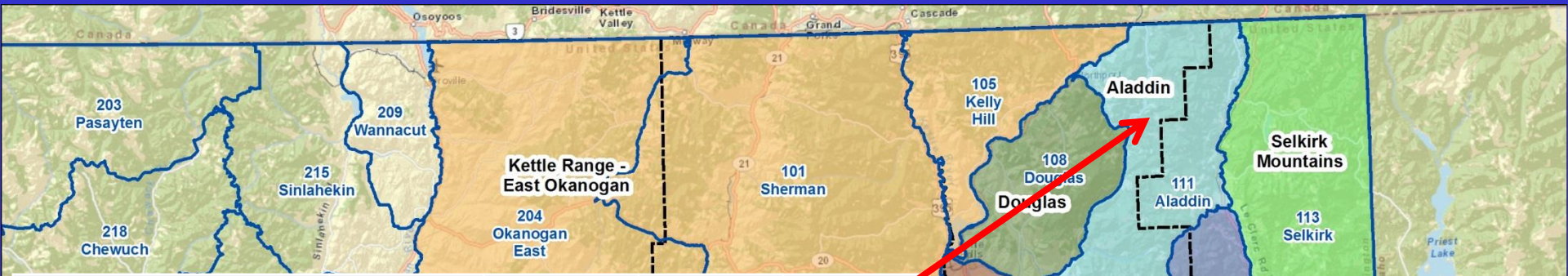
Sources: Esri, DeLorme, NAVTEQ, USGS, Intermap, iPC, NRCAN, Esri Japan, METI, Esri China (Hong Kong), Esri (Thailand), TomTom, 2013



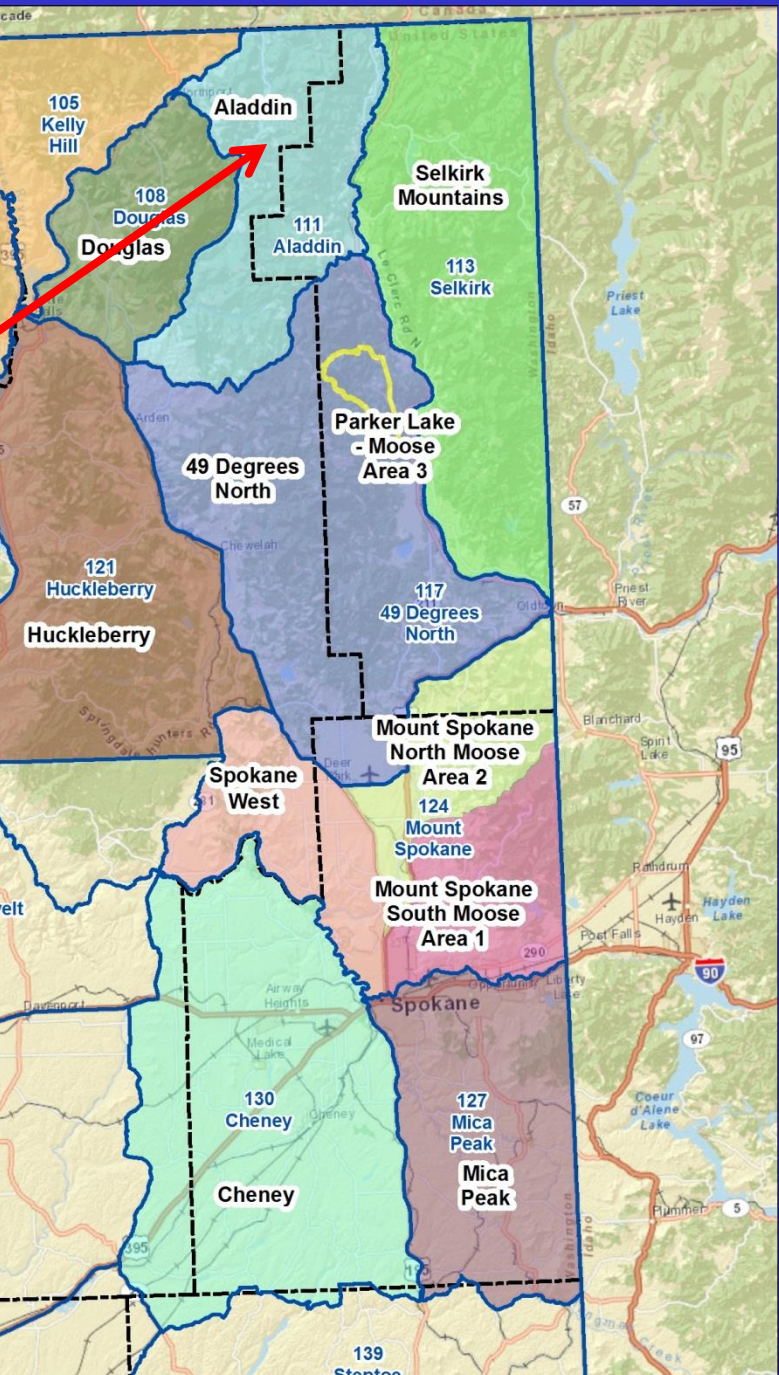
Unit	2014	2015	Season	Permits
Kettle Range	10 any	10 any		no change
Selkirk	15 any, 2 ♀	15 any, 2 ♀		no change
Parker Lake	4 any	4 any		no change
Mt Spokane N	8 any, 16 ♀	8 any, 16 ♀		no change
Mt Spokane S	8 any, 16 ♀	8 any, 16 ♀		no change
Mika Pk	7 any	7 any		no change
Douglas	3 any, 0 ♀	6 any, 2 ♀	Split season	increase
Aladdin	3 any, 0 ♀	6 any, 2 ♀	Split season	increase
49 Degrees N	21 any, 7 ♀	30 any, 9 ♀	Split season	increase
Huckleberry	7 any, 0 ♀	12 any, 3 ♀	Split season	increase
Spokane W	0 any, 0 ♀	1 any, 2 ♀		increase
Cheney	0 any, 0 ♀	0 any, 2 ♀		increase



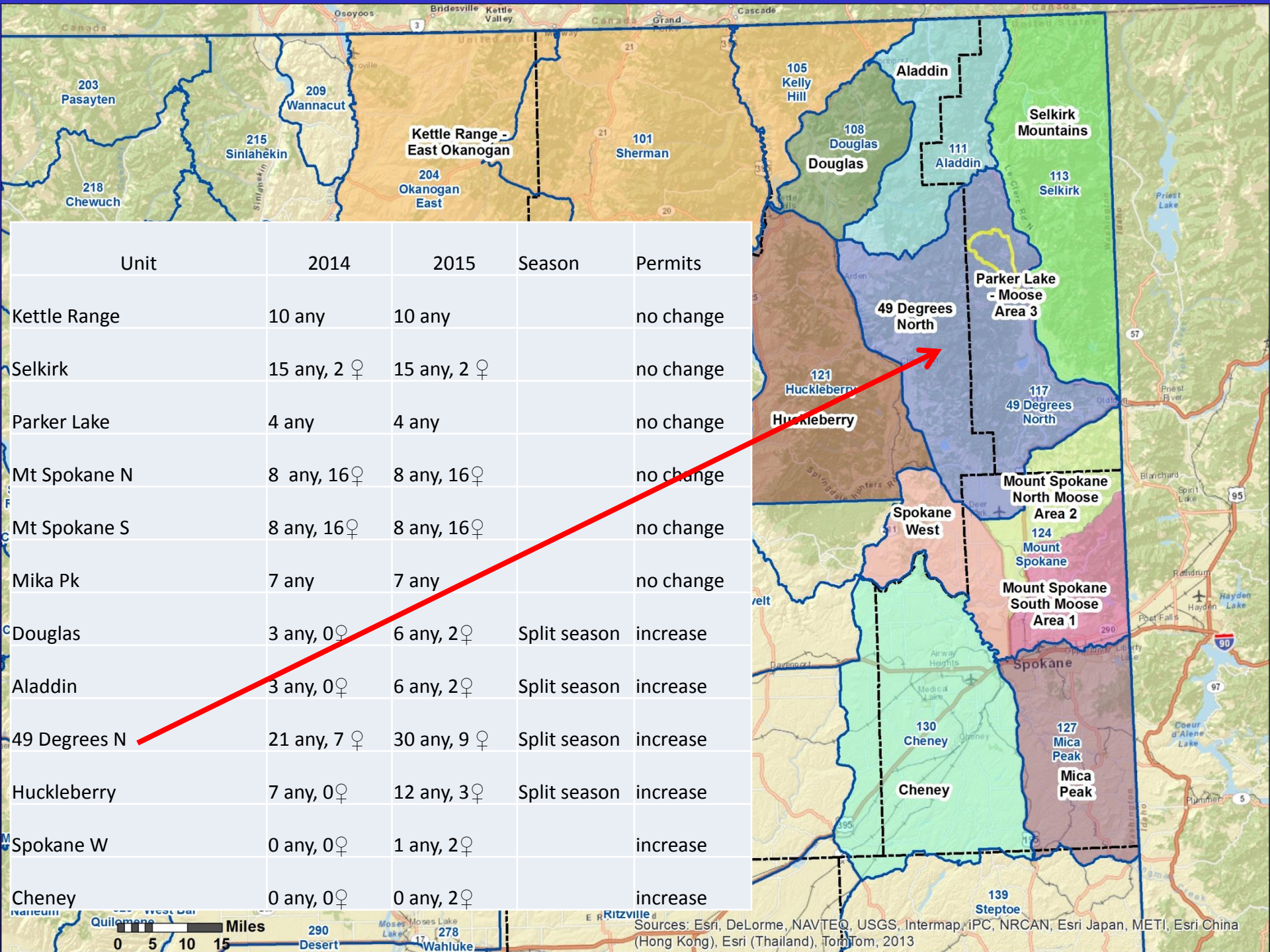
Sources: Esri, DeLorme, NAVTEQ, USGS, Intermap, iPC, NRCAN, Esri Japan, METI, Esri China (Hong Kong), Esri (Thailand), TomTom, 2013



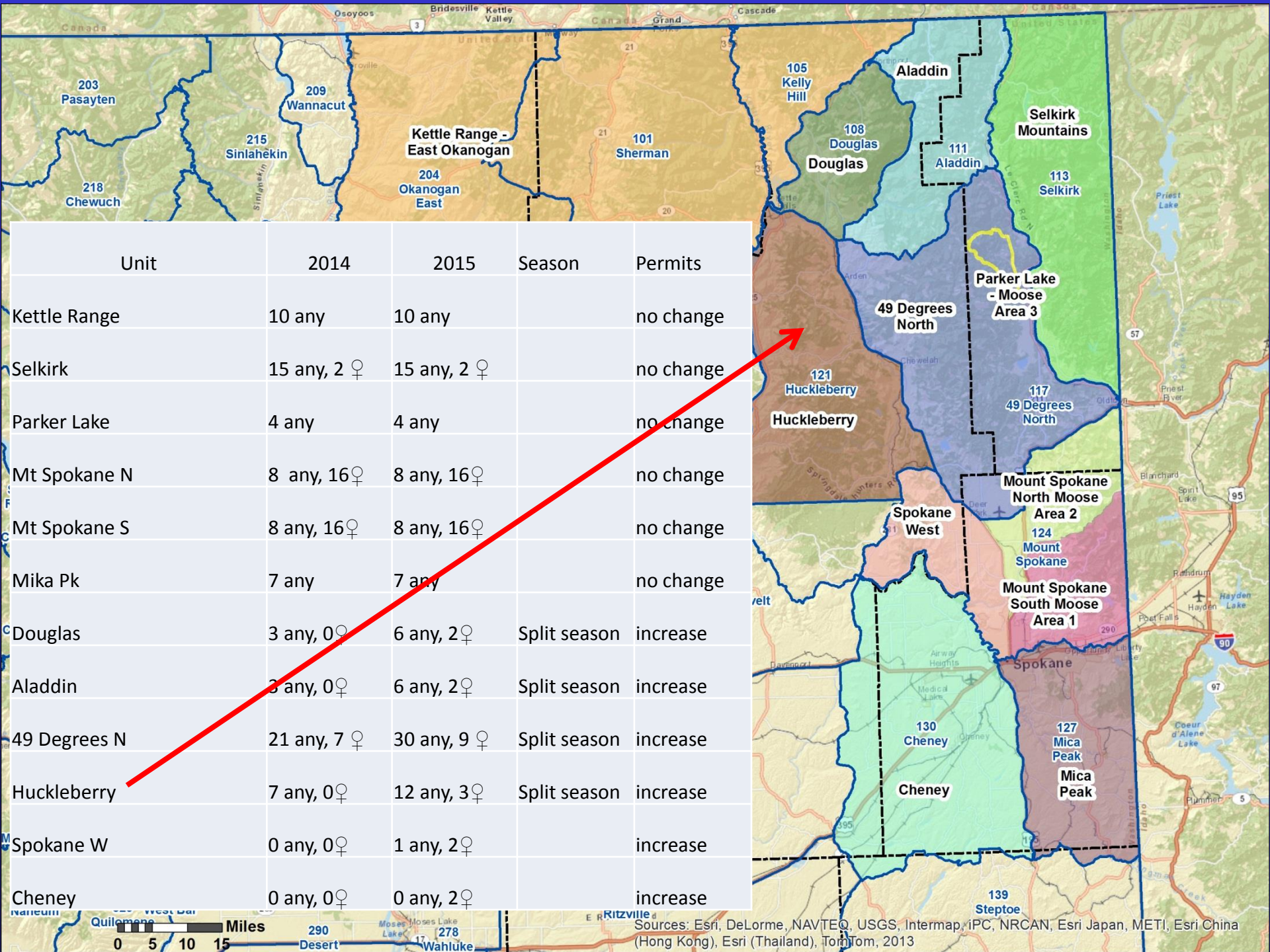
Unit	2014	2015	Season	Permits
Kettle Range	10 any	10 any		no change
Selkirk	15 any, 2 ♀	15 any, 2 ♀		no change
Parker Lake	4 any	4 any		no change
Mt Spokane N	8 any, 16 ♀	8 any, 16 ♀		no change
Mt Spokane S	8 any, 16 ♀	8 any, 16 ♀		no change
Mika Pk	7 any	7 any		no change
Douglas	3 any, 0 ♀	6 any, 2 ♀	Split season	increase
Aladdin	3 any, 0 ♀	6 any, 2 ♀	Split season	increase
49 Degrees N	21 any, 7 ♀	30 any, 9 ♀	Split season	increase
Huckleberry	7 any, 0 ♀	12 any, 3 ♀	Split season	increase
Spokane W	0 any, 0 ♀	1 any, 2 ♀		increase
Cheney	0 any, 0 ♀	0 any, 2 ♀		increase



Sources: Esri, DeLorme, NAVTEQ, USGS, Intermap, iPC, NRCAN, Esri Japan, METI, Esri China (Hong Kong), Esri (Thailand), TomTom, 2013

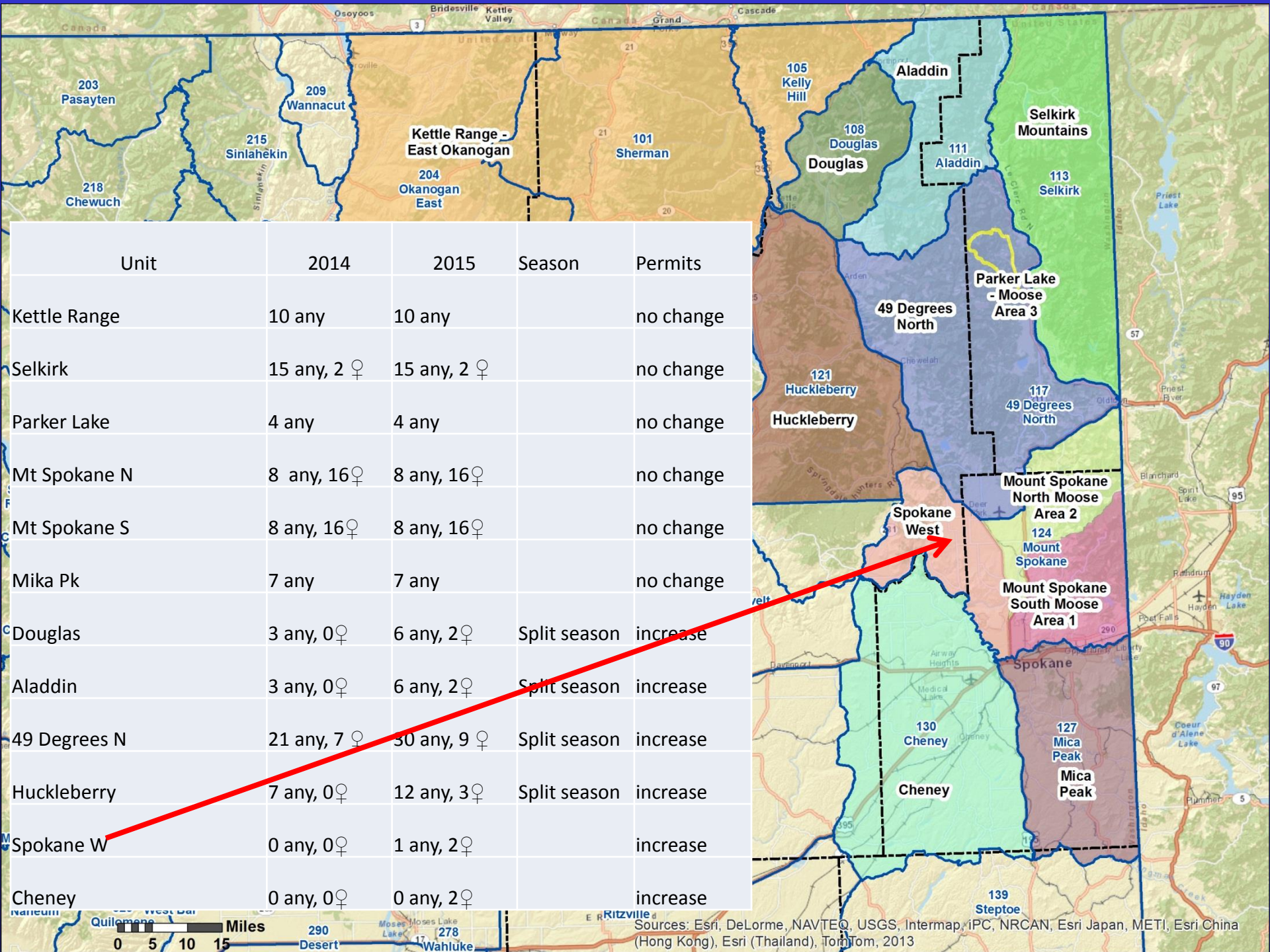


Sources: Esri, DeLorme, NAVTEQ, USGS, Intermap, iPC, NRCAN, Esri Japan, METI, Esri China (Hong Kong), Esri (Thailand), TomTom, 2013

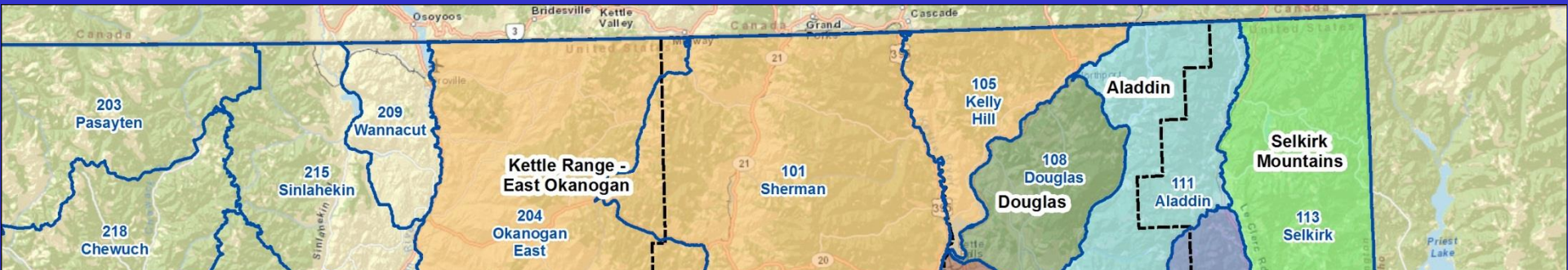


Sources: Esri, DeLorme, NAVTEQ, USGS, Intermap, iPC, NRCAN, Esri Japan, METI, Esri China (Hong Kong), Esri (Thailand), TomTom, 2013

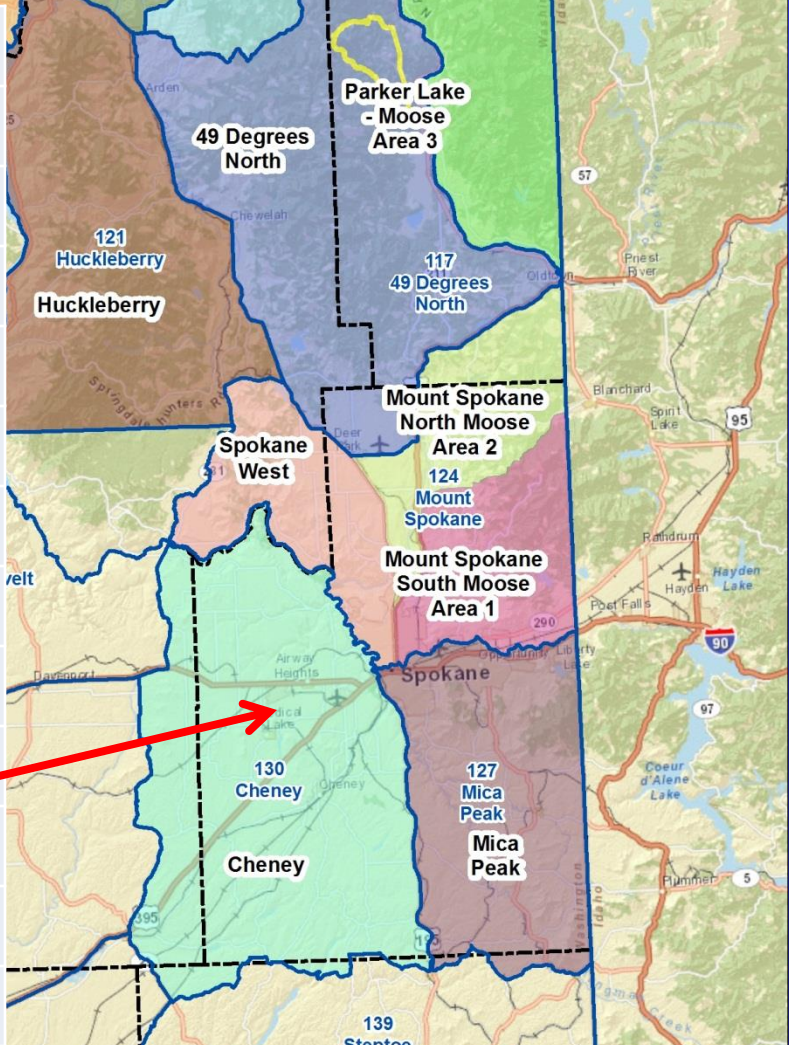




Sources: Esri, DeLorme, NAVTEQ, USGS, Intermap, iPC, NRCAN, Esri Japan, METI, Esri China (Hong Kong), Esri (Thailand), TomTom, 2013



Unit	2014	2015	Season	Permits
Kettle Range	10 any	10 any		no change
Selkirk	15 any, 2 ♀	15 any, 2 ♀		no change
Parker Lake	4 any	4 any		no change
Mt Spokane N	8 any, 16 ♀	8 any, 16 ♀		no change
Mt Spokane S	8 any, 16 ♀	8 any, 16 ♀		no change
Mika Pk	7 any	7 any		no change
Douglas	3 any, 0 ♀	6 any, 2 ♀	Split season	increase
Aladdin	3 any, 0 ♀	6 any, 2 ♀	Split season	increase
49 Degrees N	21 any, 7 ♀	30 any, 9 ♀	Split season	increase
Huckleberry	7 any, 0 ♀	12 any, 3 ♀	Split season	increase
Spokane W	0 any, 0 ♀	1 any, 2 ♀		increase
Cheney	0 any, 0 ♀	0 any, 2 ♀		increase



Sources: Esri, DeLorme, NAVTEQ, USGS, Intermap, iPC, NRCAN, Esri Japan, METI, Esri China (Hong Kong), Esri (Thailand), TomTom, 2013

# 232-28-623 Mountain Goats

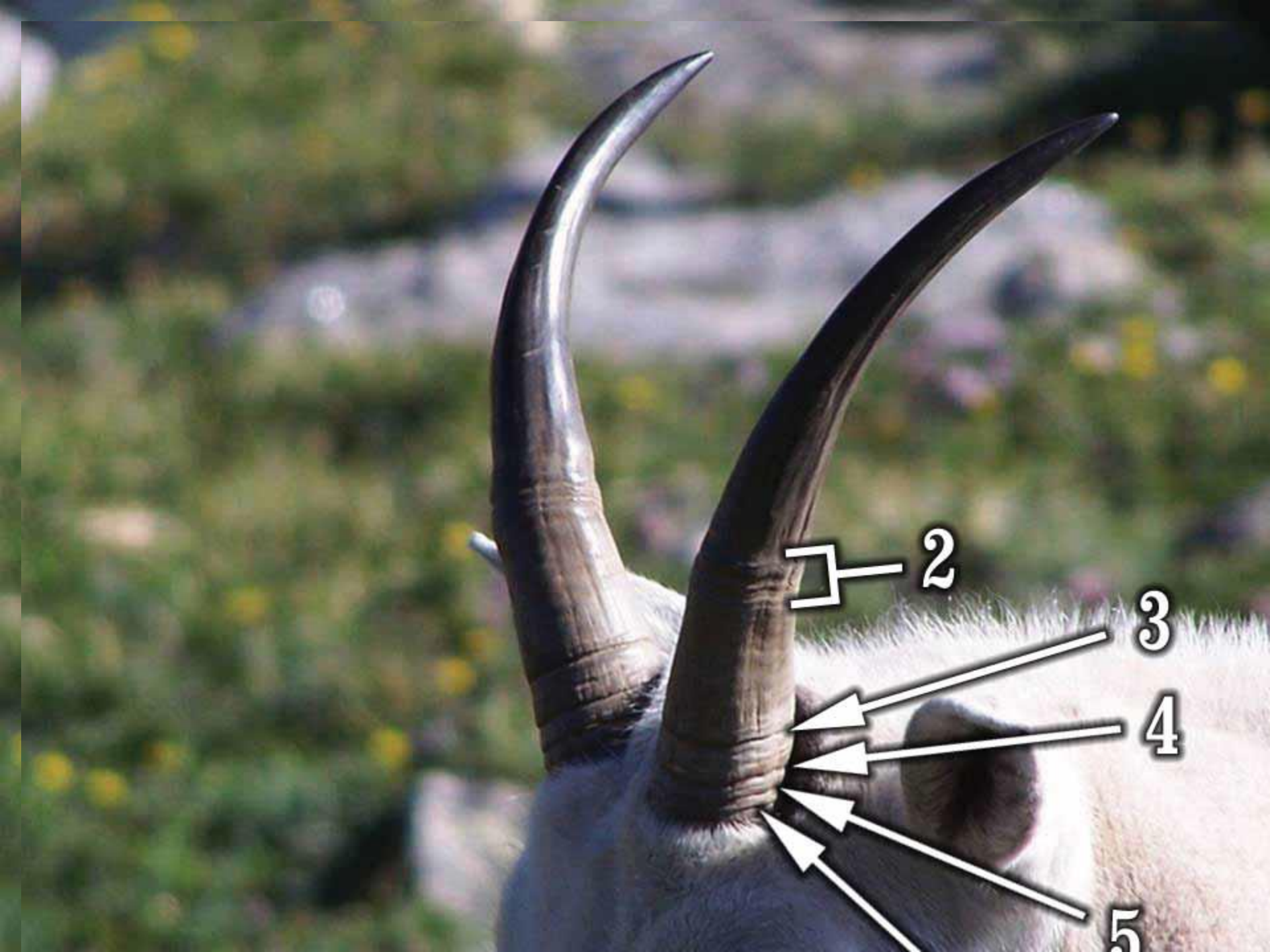
## -- Recommendations --

- Mandatory in-person inspection for goats
- Small revisions to permit numbers in existing mountain goat hunts responding to recent survey estimates and Game Management Plan
- Extend season through November





**Mandatory  
inspection  
useful**



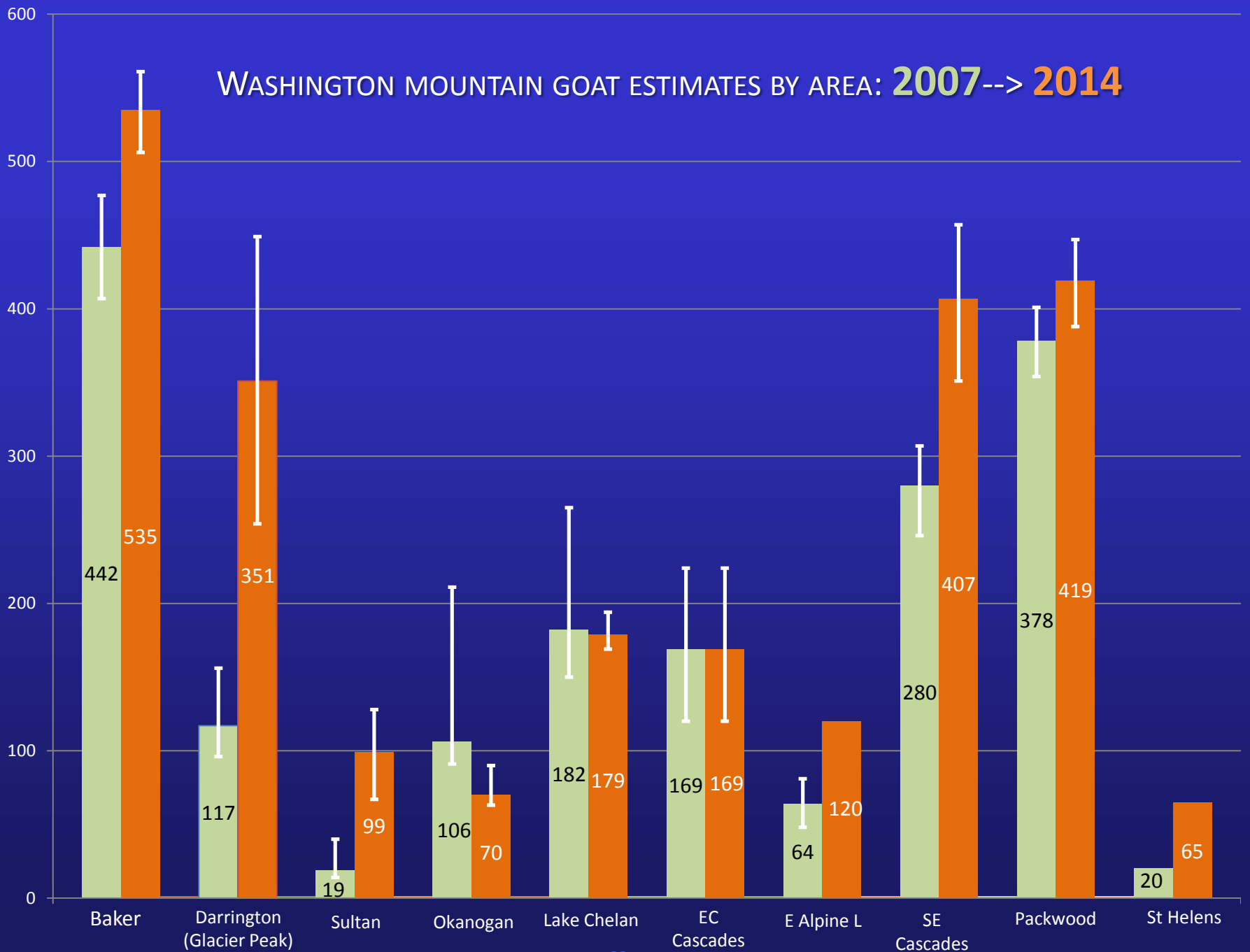
2

3

4

5

# WASHINGTON MOUNTAIN GOAT ESTIMATES BY AREA: 2007--> 2014

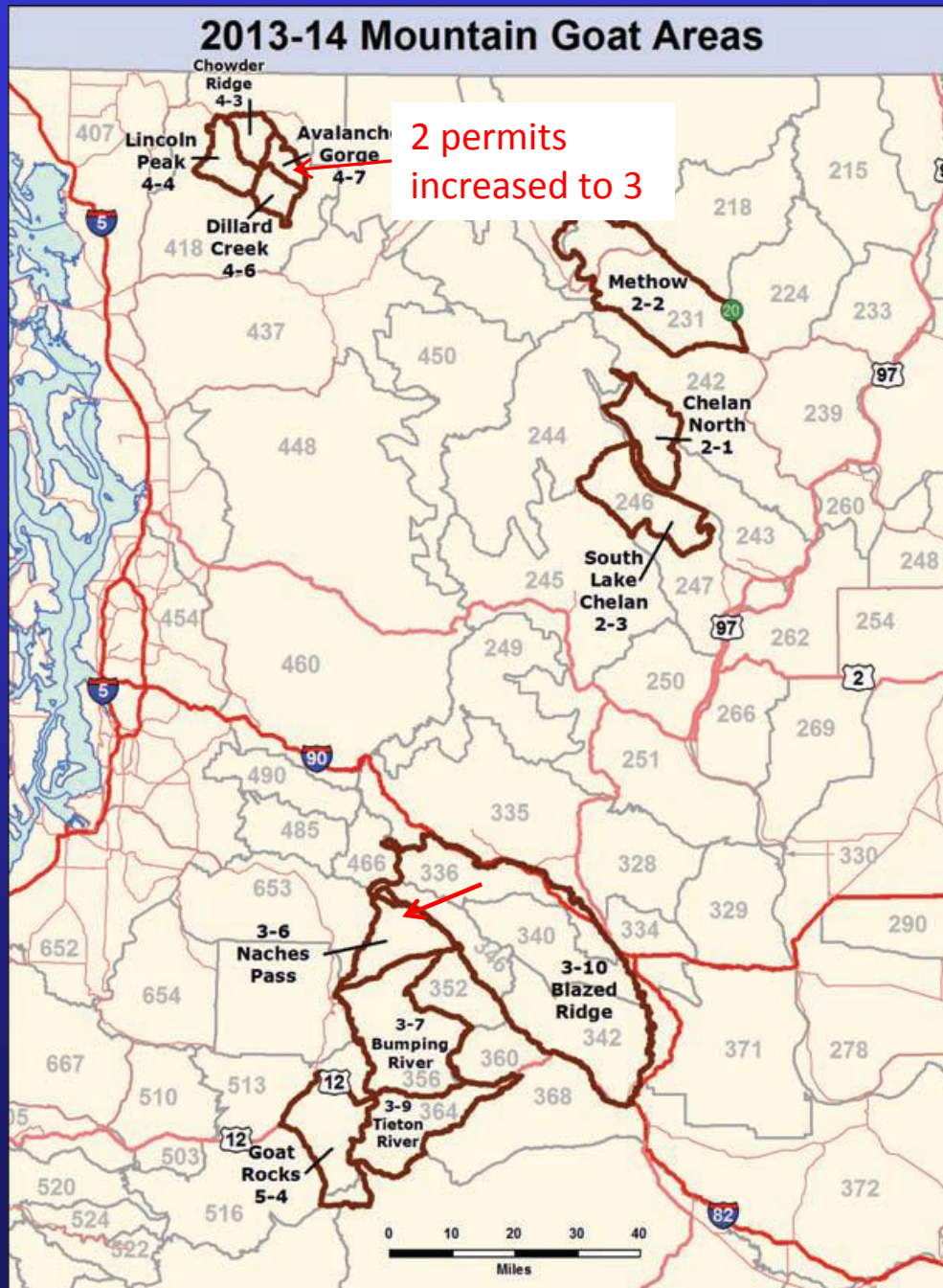


# 2015-2016 Mountain Goat Hunt Areas with Hunts



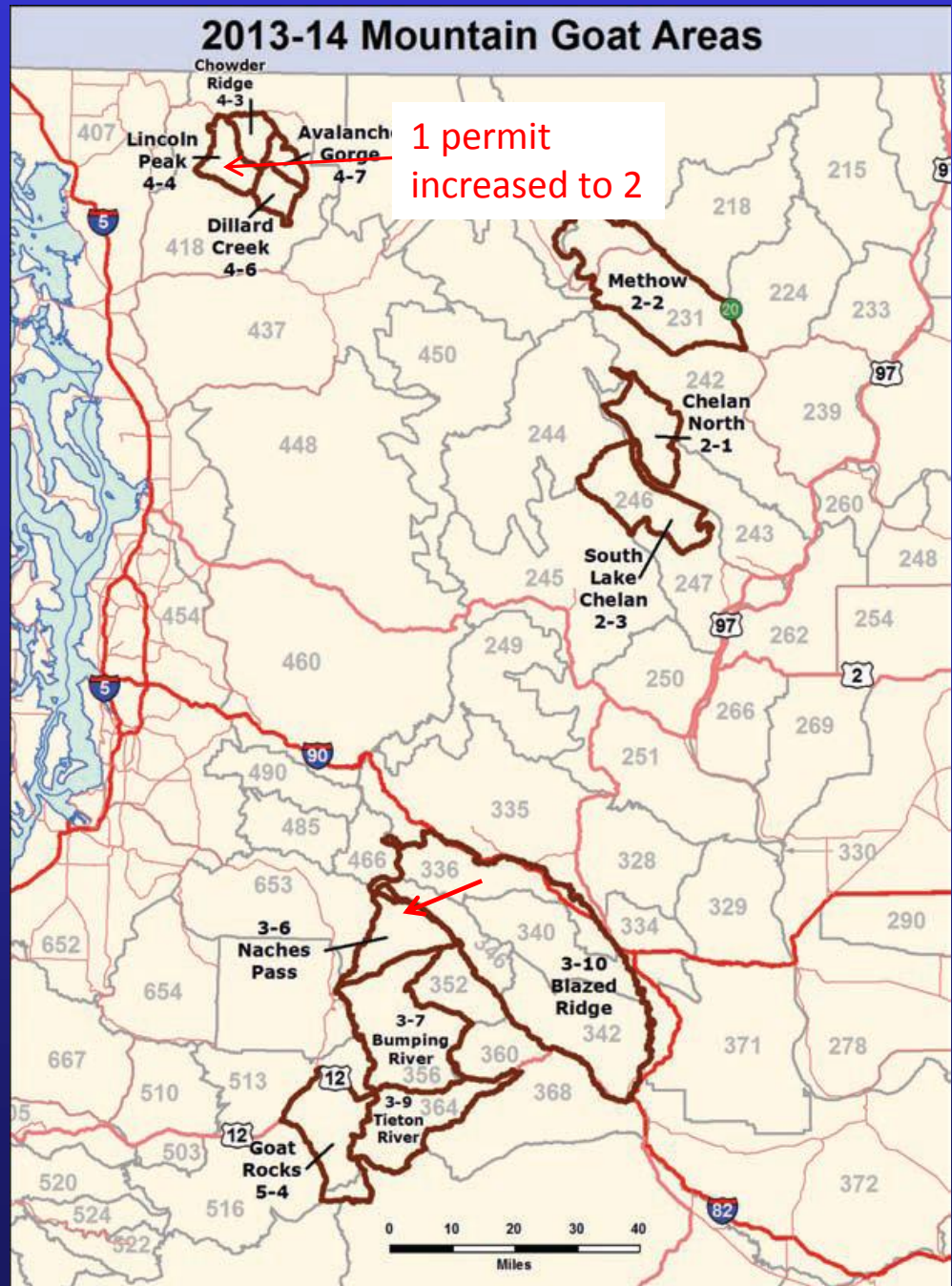
Sources: Esri, DeLorme, NAVTEQ, USGS, Intermap, IPC, NRCAN, Esri Japan, METI, Esri China (Hong Kong), Esri (Thailand), TomTom, 2013

Avalanche  
Gorge:  
Surveys  
show  
increase

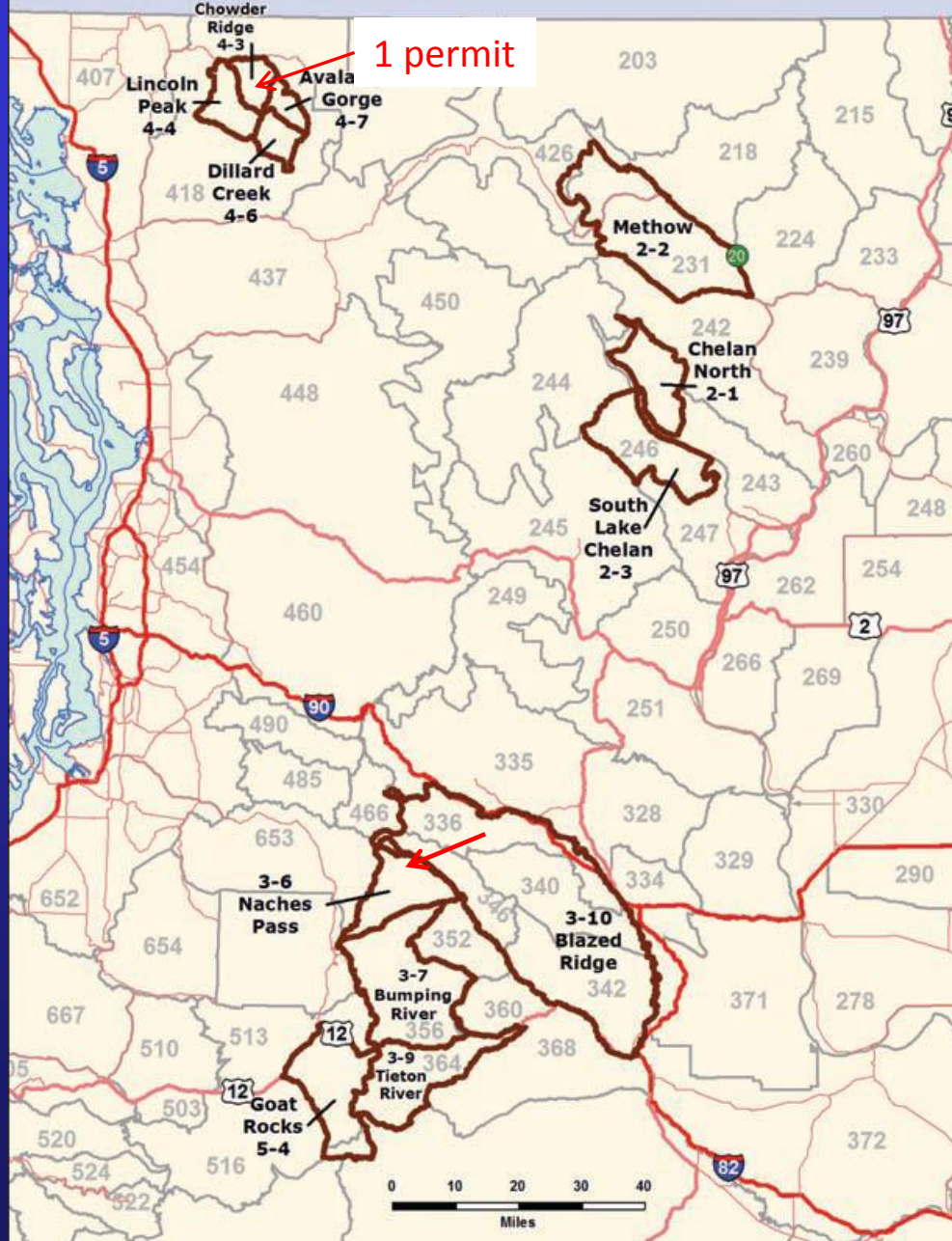




Lincoln Peak:  
Surveys show  
increase

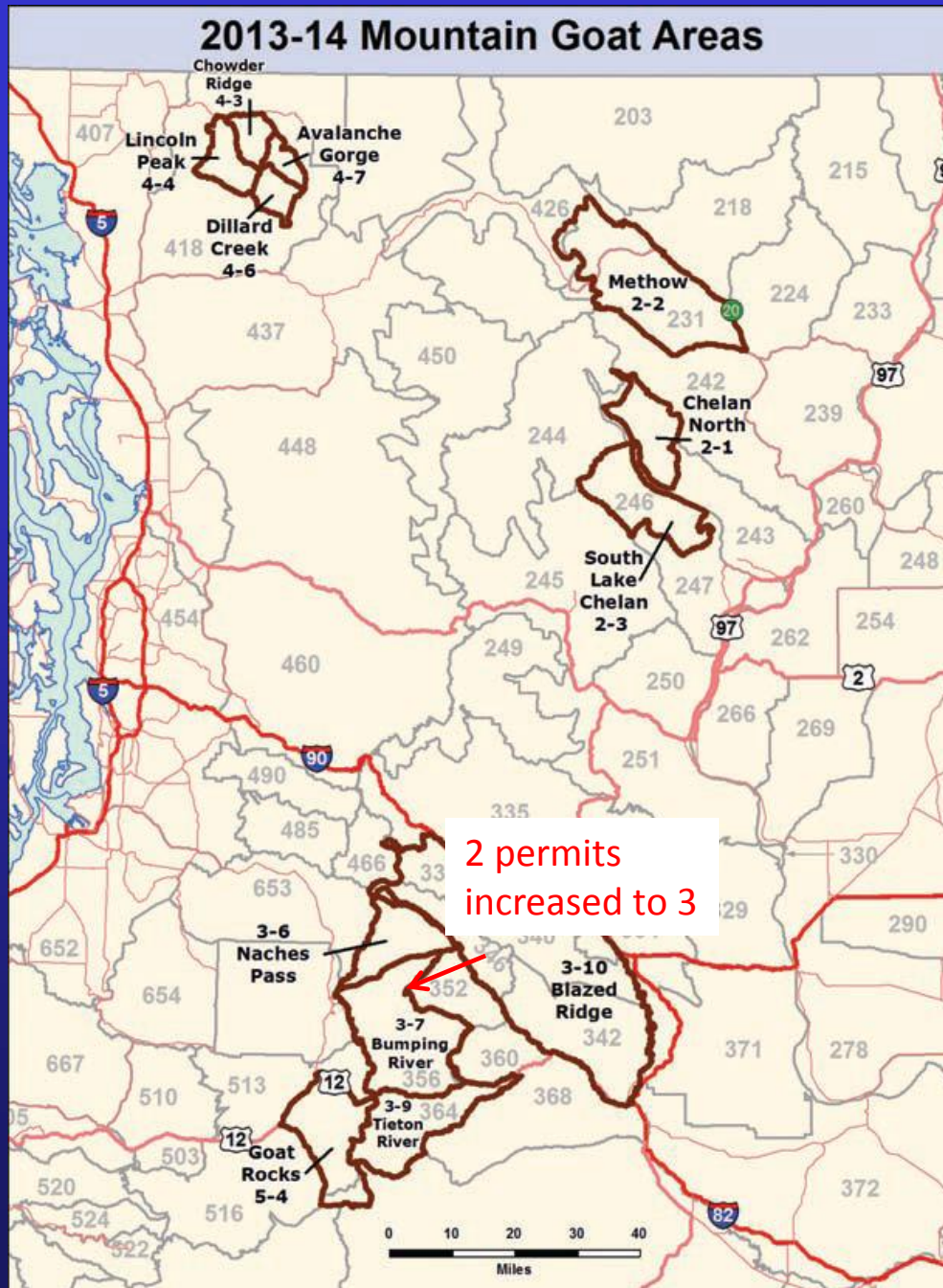


# 2013-14 Mountain Goat Areas

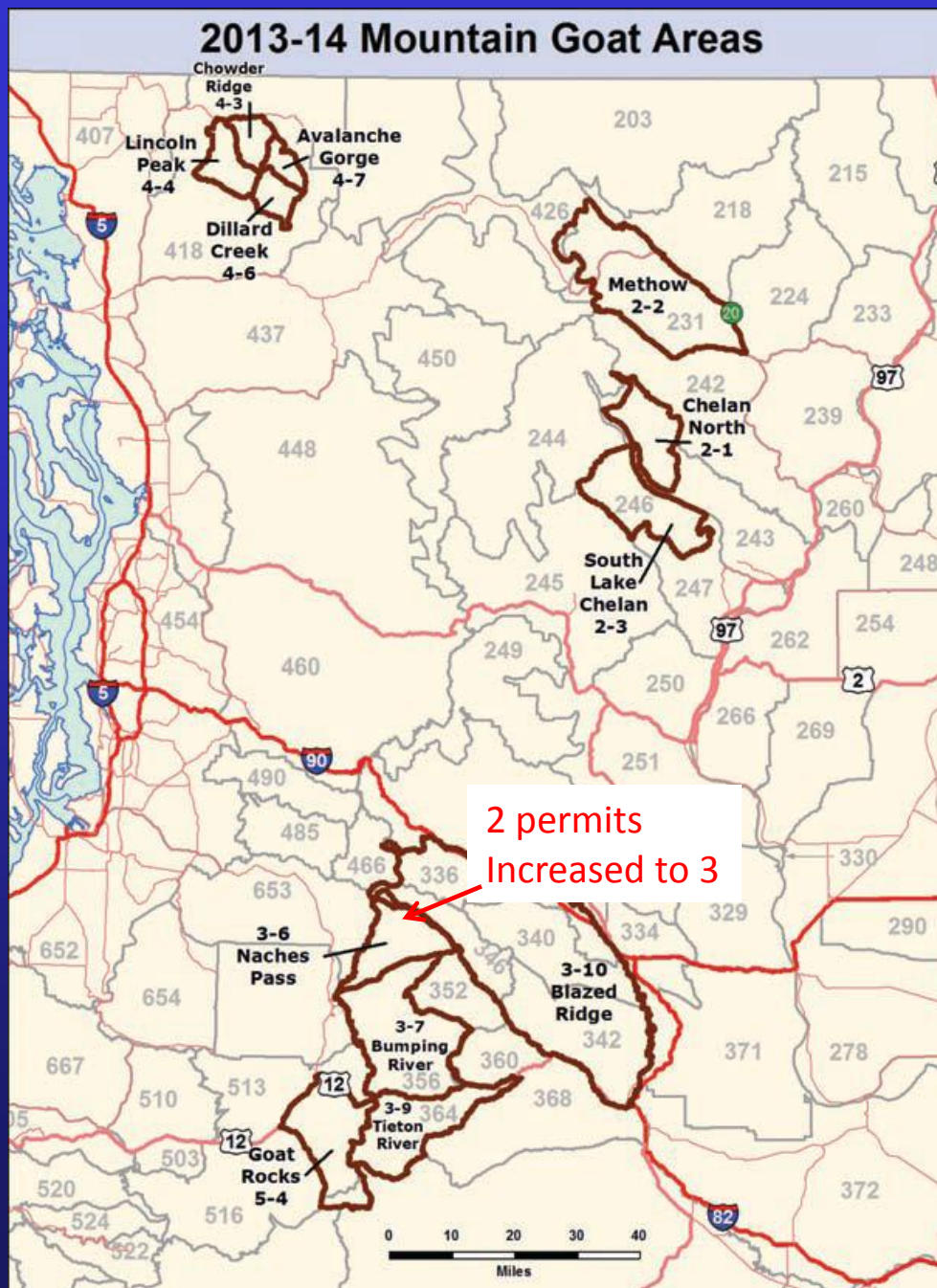


Chowder  
Ridge:  
Back to  
typical  
Permit  
level (1)

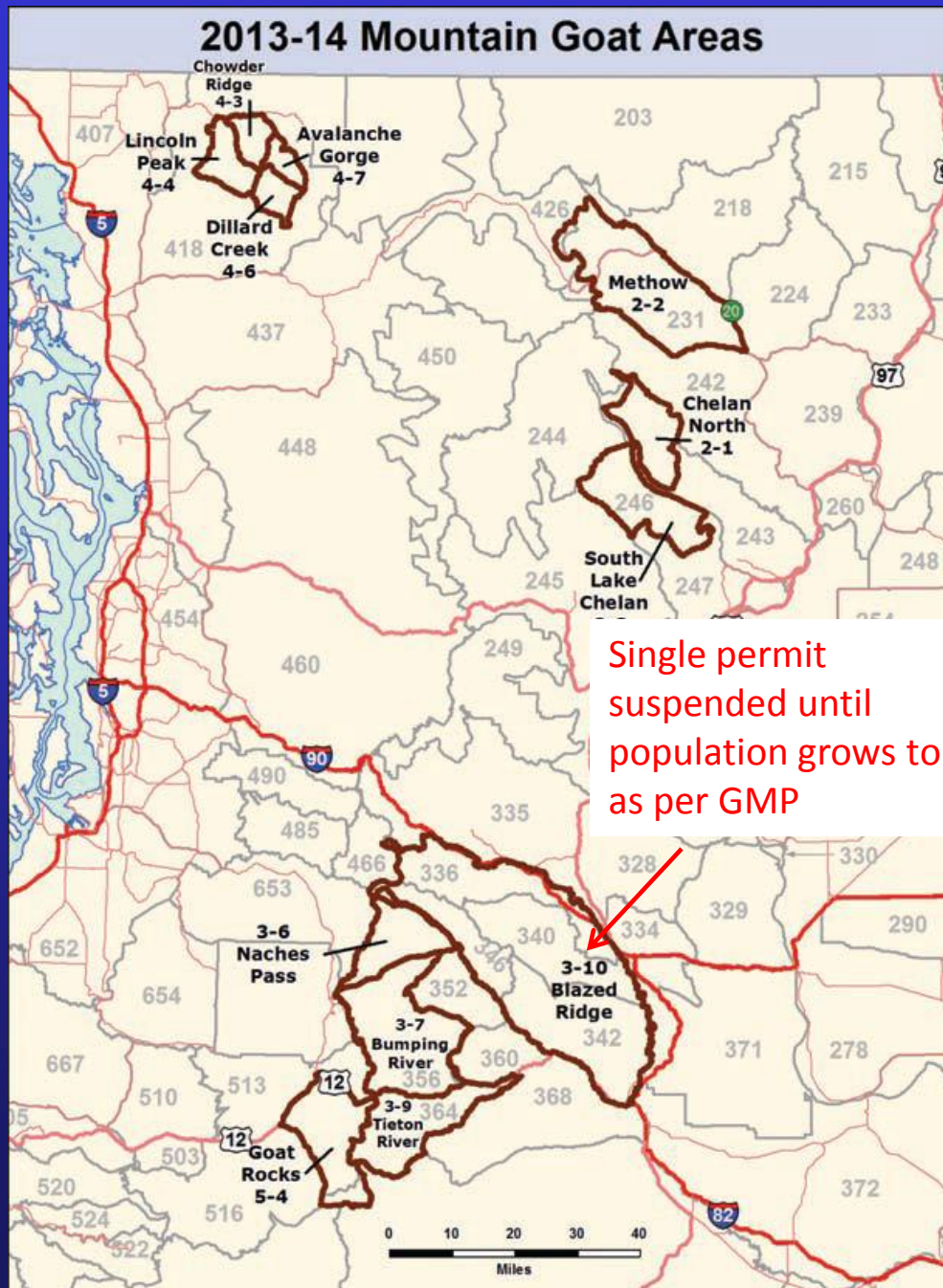
Bumping  
River:  
Surveys  
show  
increase



Naches  
Pass:  
Surveys  
show  
increase

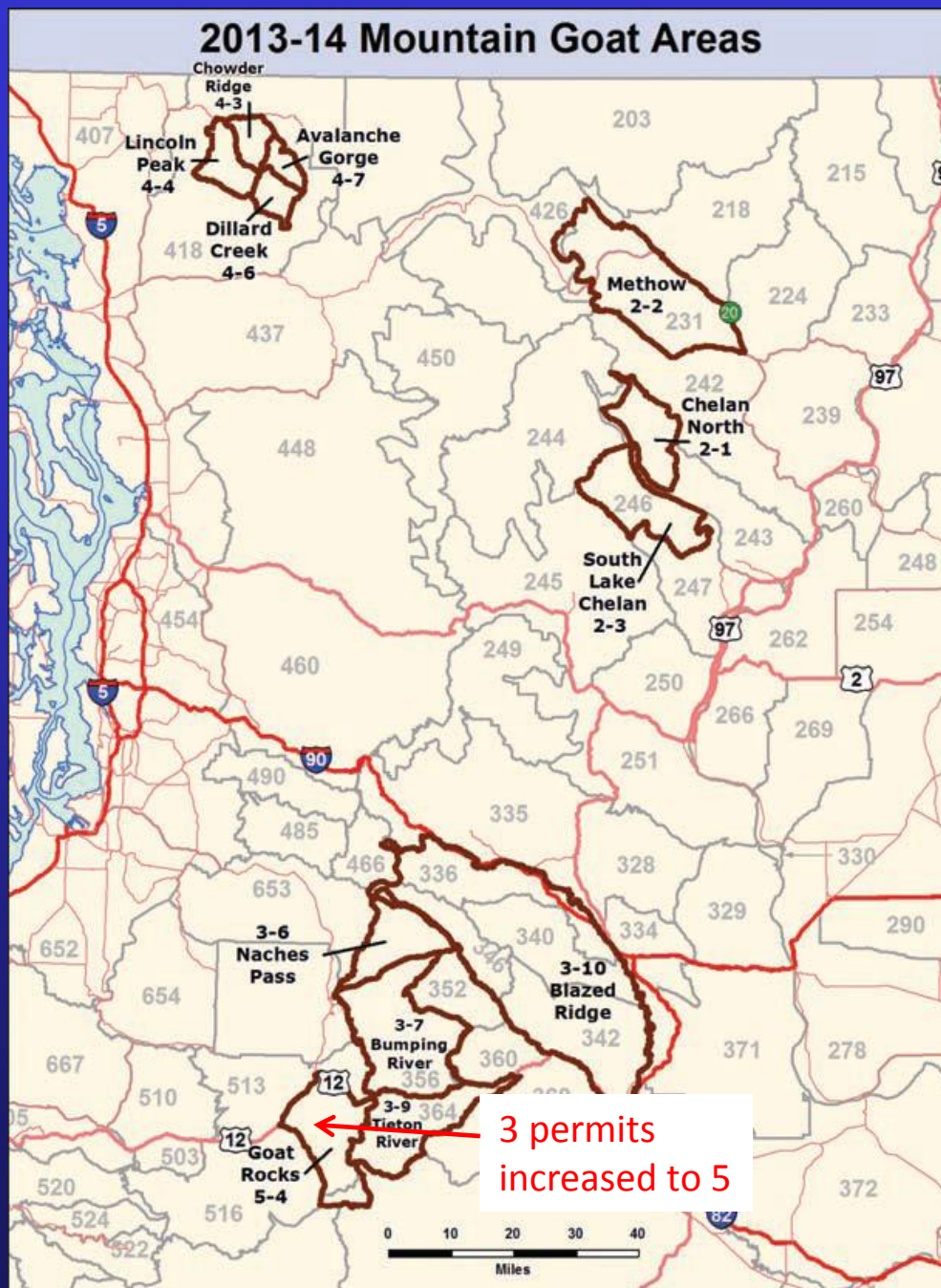


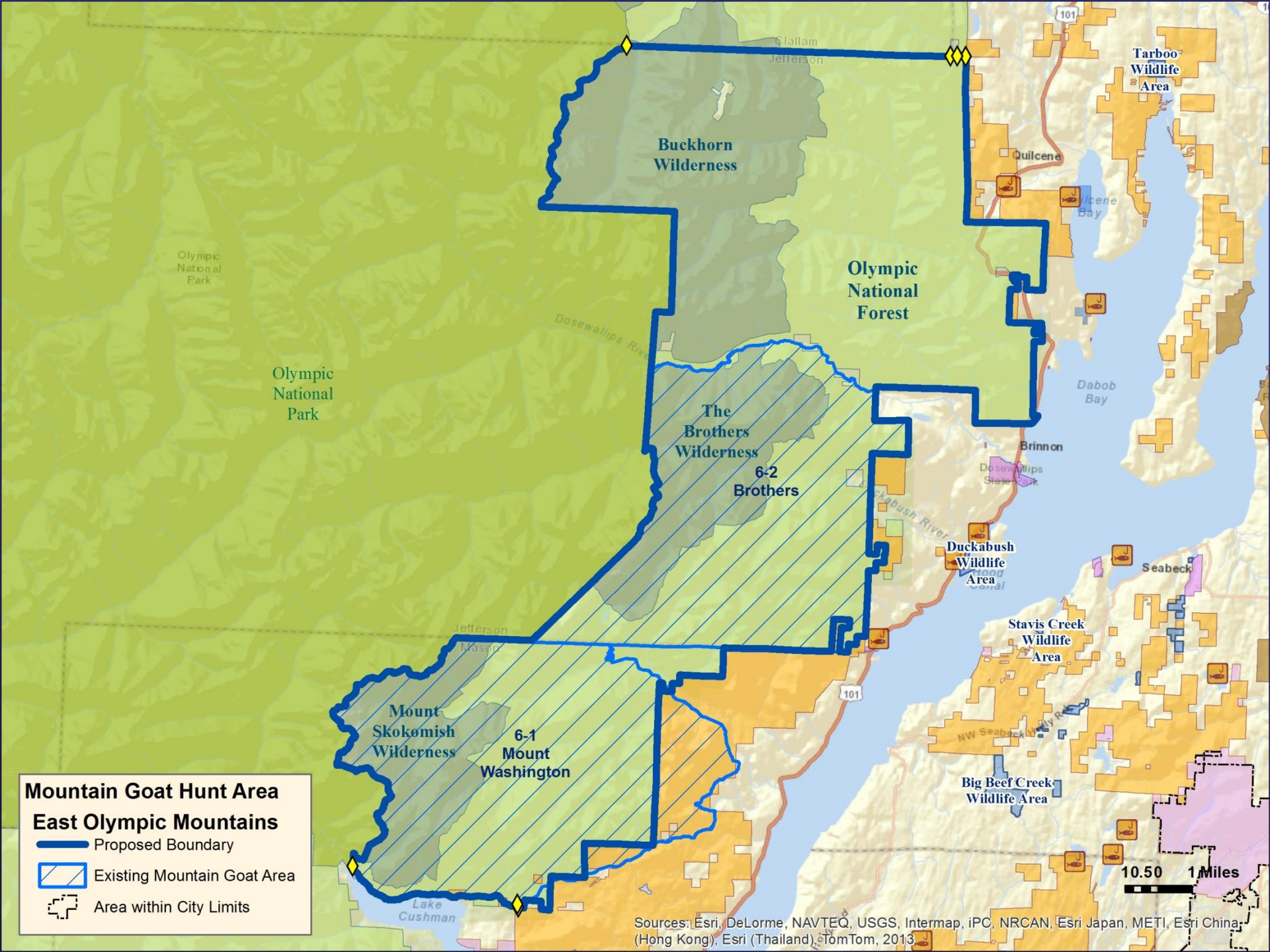
Blazed  
Ridge:  
Suspend  
permit



Single permit  
suspended until  
population grows to > 100,  
as per GMP

Goat rocks:  
Surveys  
show  
increase



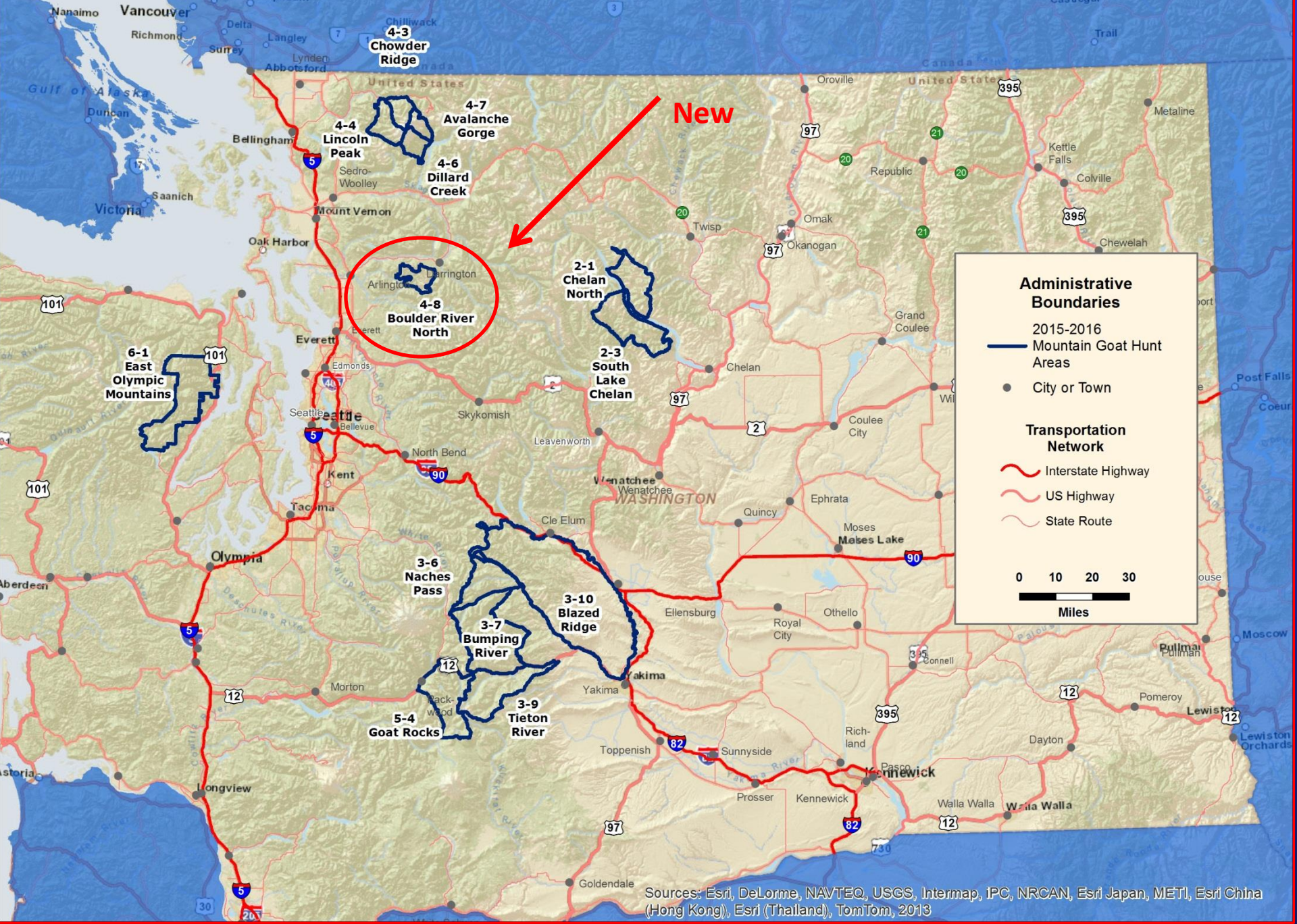


**Mountain Goat Hunt Area  
East Olympic Mountains**

-  Proposed Boundary
-  Existing Mountain Goat Area
-  Area within City Limits

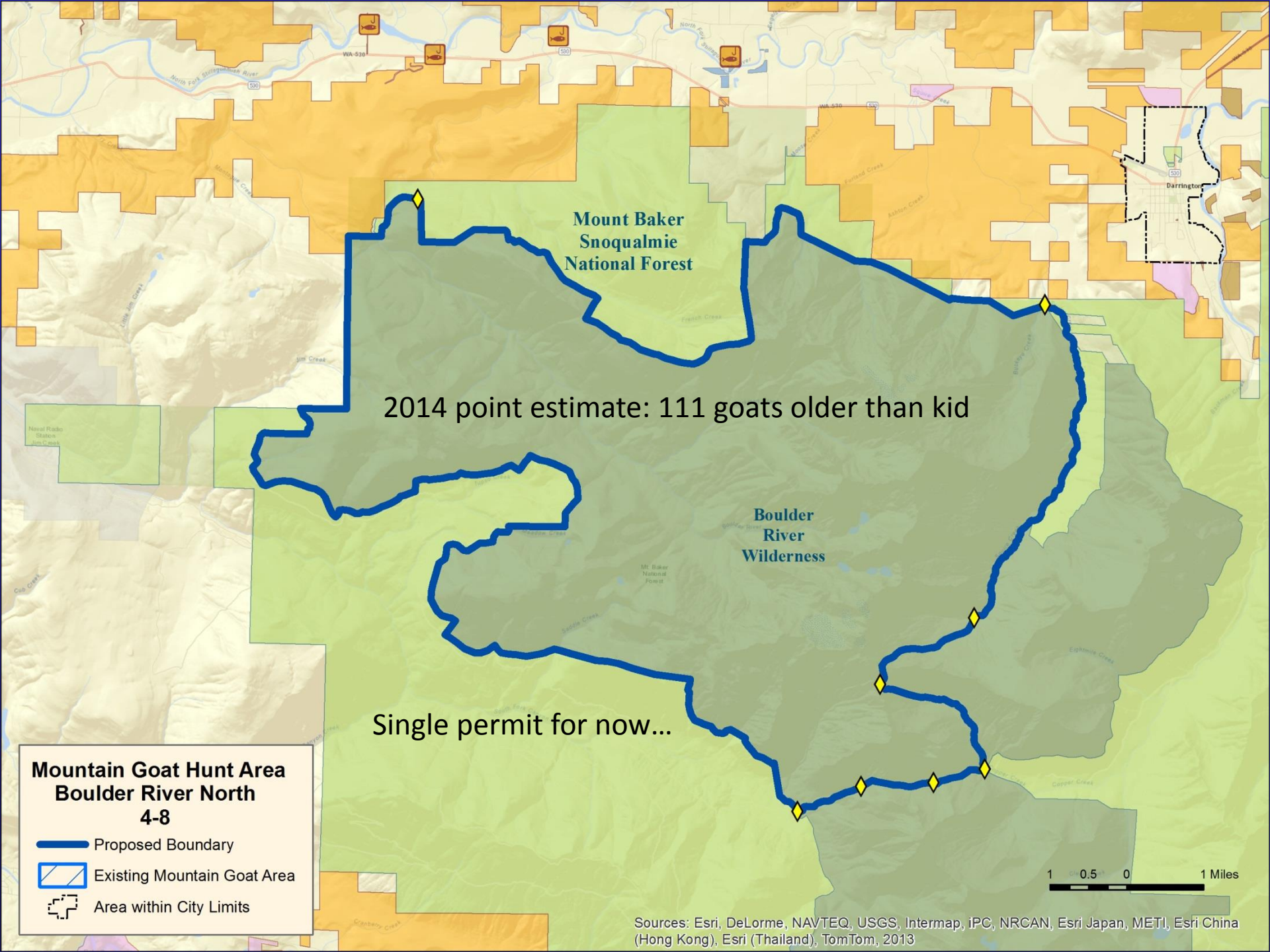
Sources: Esri, DeLorme, NAVTEQ, USGS, Intermap, iPC, NRCAN, Esri Japan, METI, Esri China (Hong Kong), Esri (Thailand), TomTom, 2013

# 2015-2016 Mountain Goat Hunt Areas with Hunts



Sources: Esri, DeLorme, NAVTEQ, USGS, Intermap, IPC, NRCAN, Esri Japan, METI, Esri China (Hong Kong), Esri (Thailand), TomTom, 2013





Mount Baker  
Snoqualmie  
National Forest

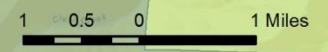
2014 point estimate: 111 goats older than kid

Boulder  
River  
Wilderness

Single permit for now...

**Mountain Goat Hunt Area  
Boulder River North  
4-8**

- Proposed Boundary
- Existing Mountain Goat Area
- Area within City Limits



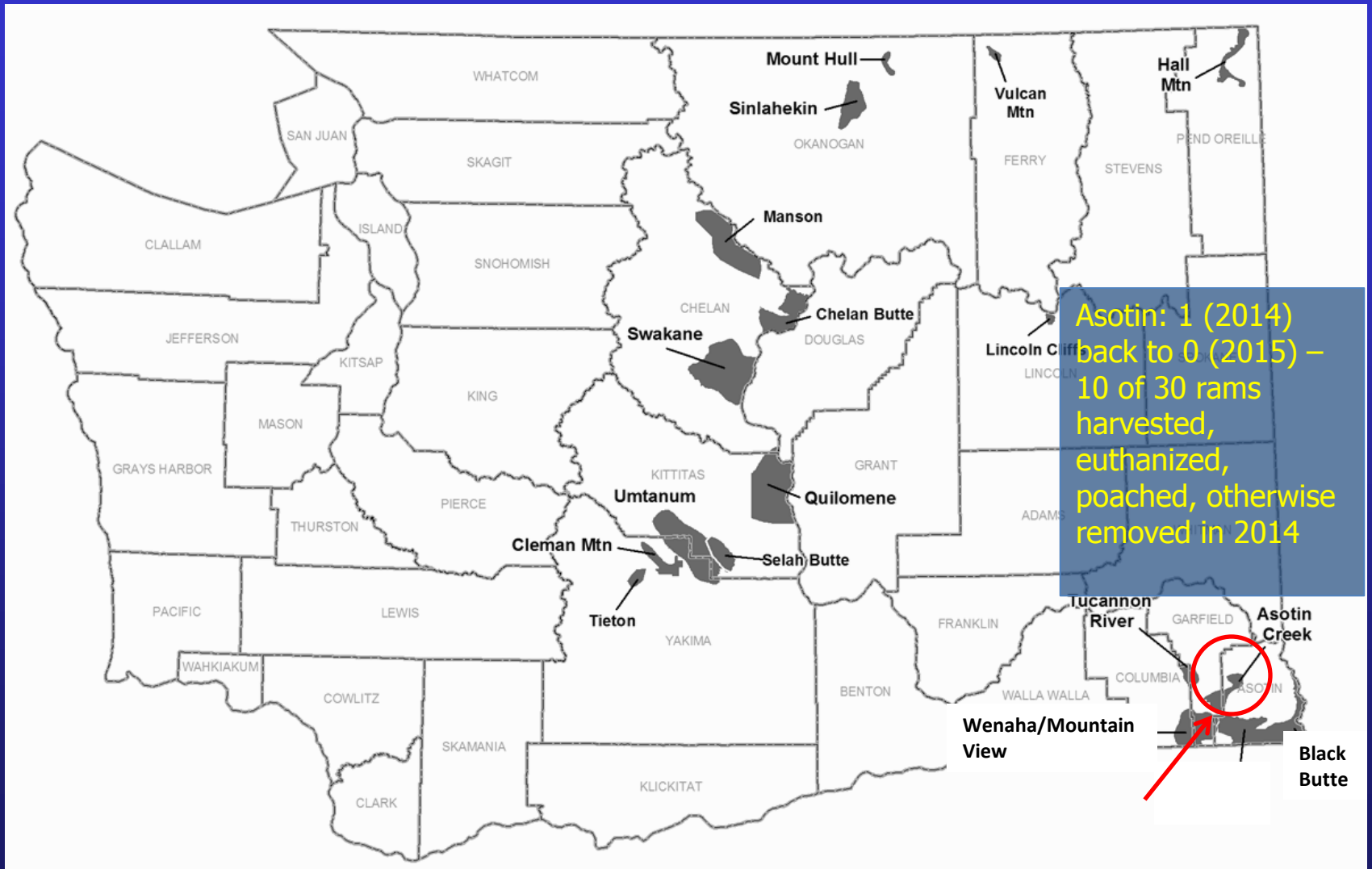
Sources: Esri, DeLorme, NAVTEQ, USGS, Intermap, IPC, NRCAN, Esri Japan, METI, Esri China (Hong Kong), Esri (Thailand), TomTom, 2013

# 232-28-622 Bighorn Sheep

- Minor revisions in permits
- All respond to Game Management Plan and recent survey information



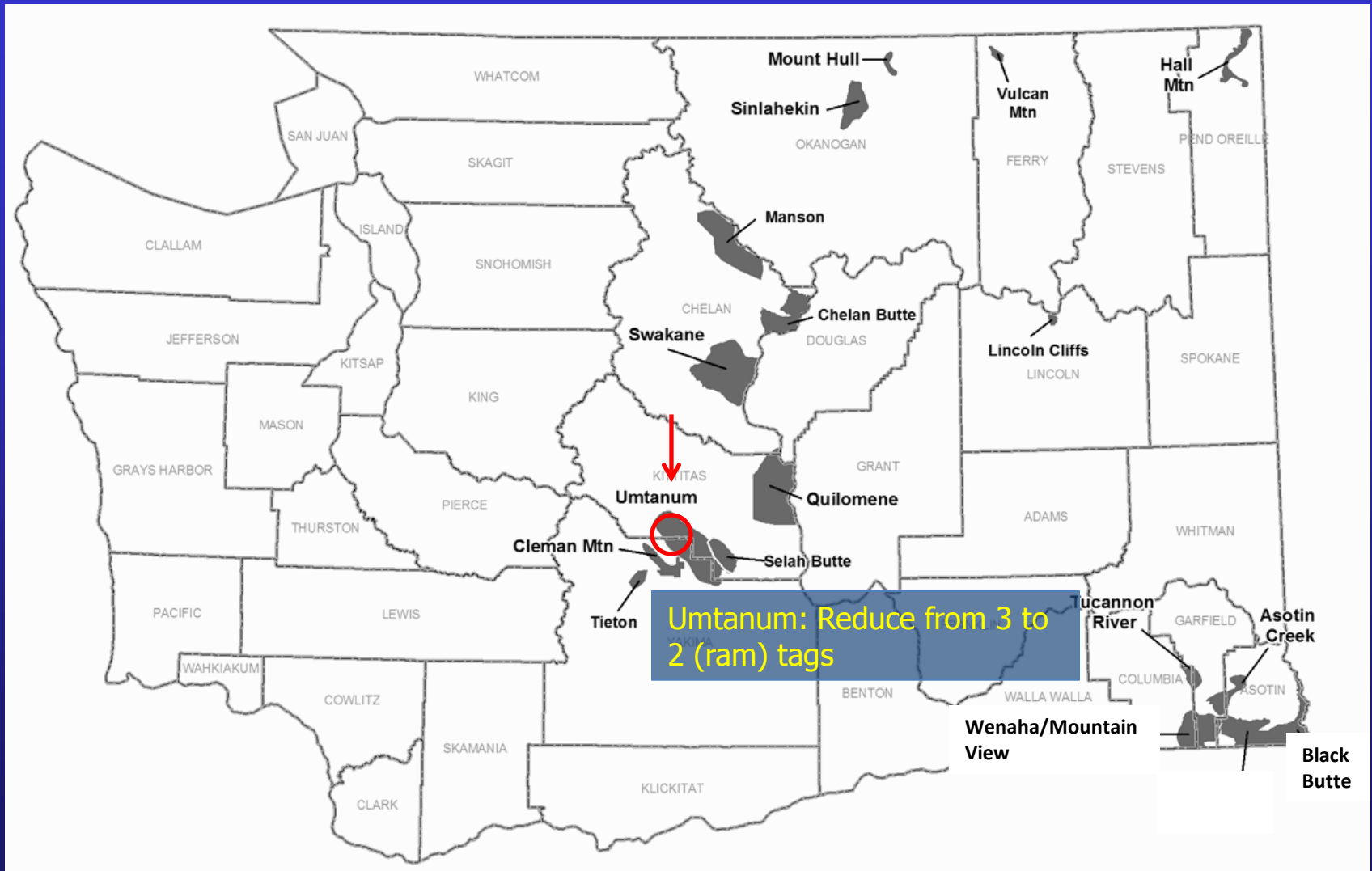
# Revisions to "Rocky Mtn" Bighorn Permits



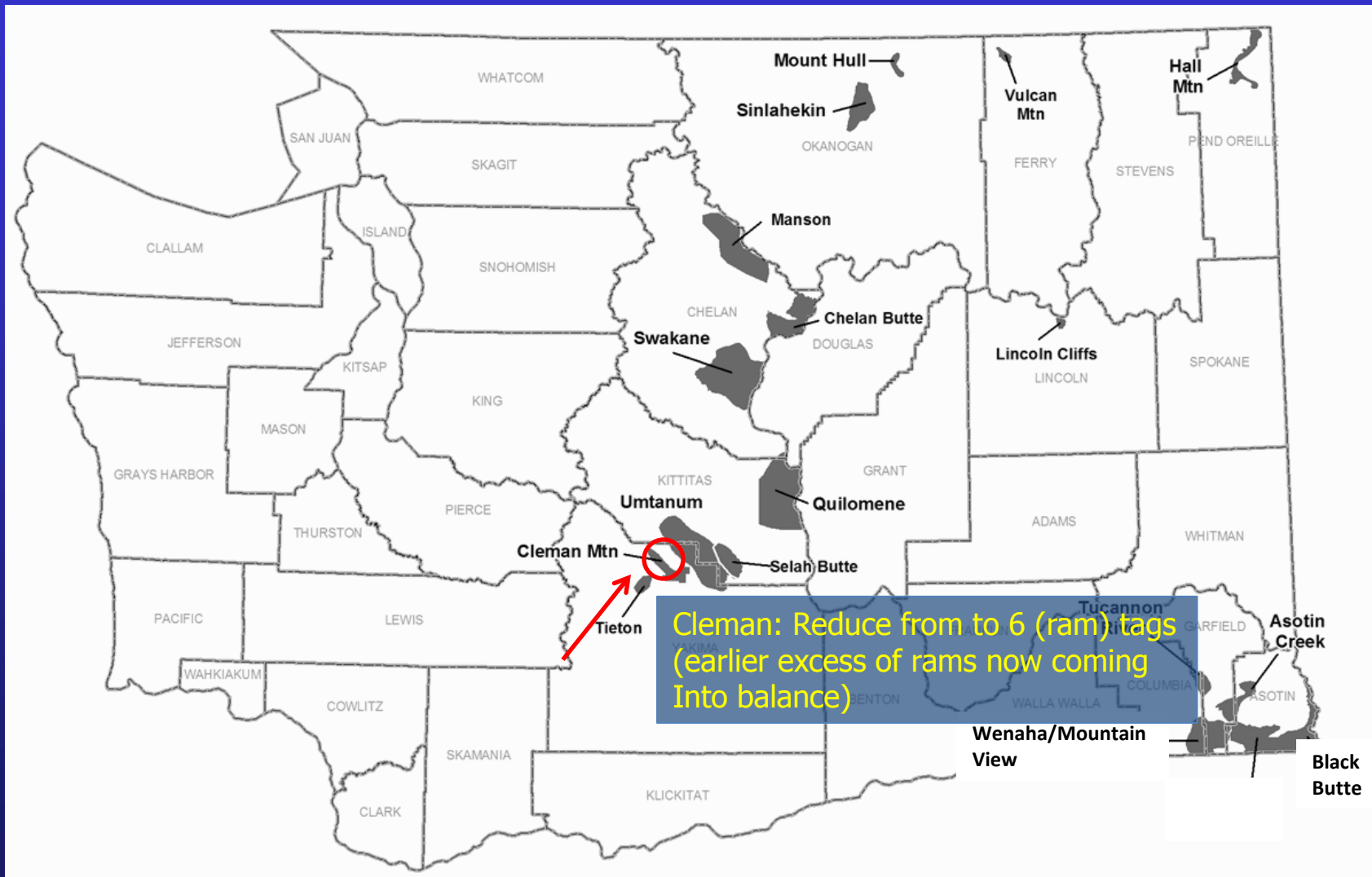
Asotin: 1 (2014)  
back to 0 (2015) -  
10 of 30 rams  
harvested,  
euthanized,  
poached, otherwise  
removed in 2014

Wenaha/Mountain View  
Asotin Creek  
Black Butte

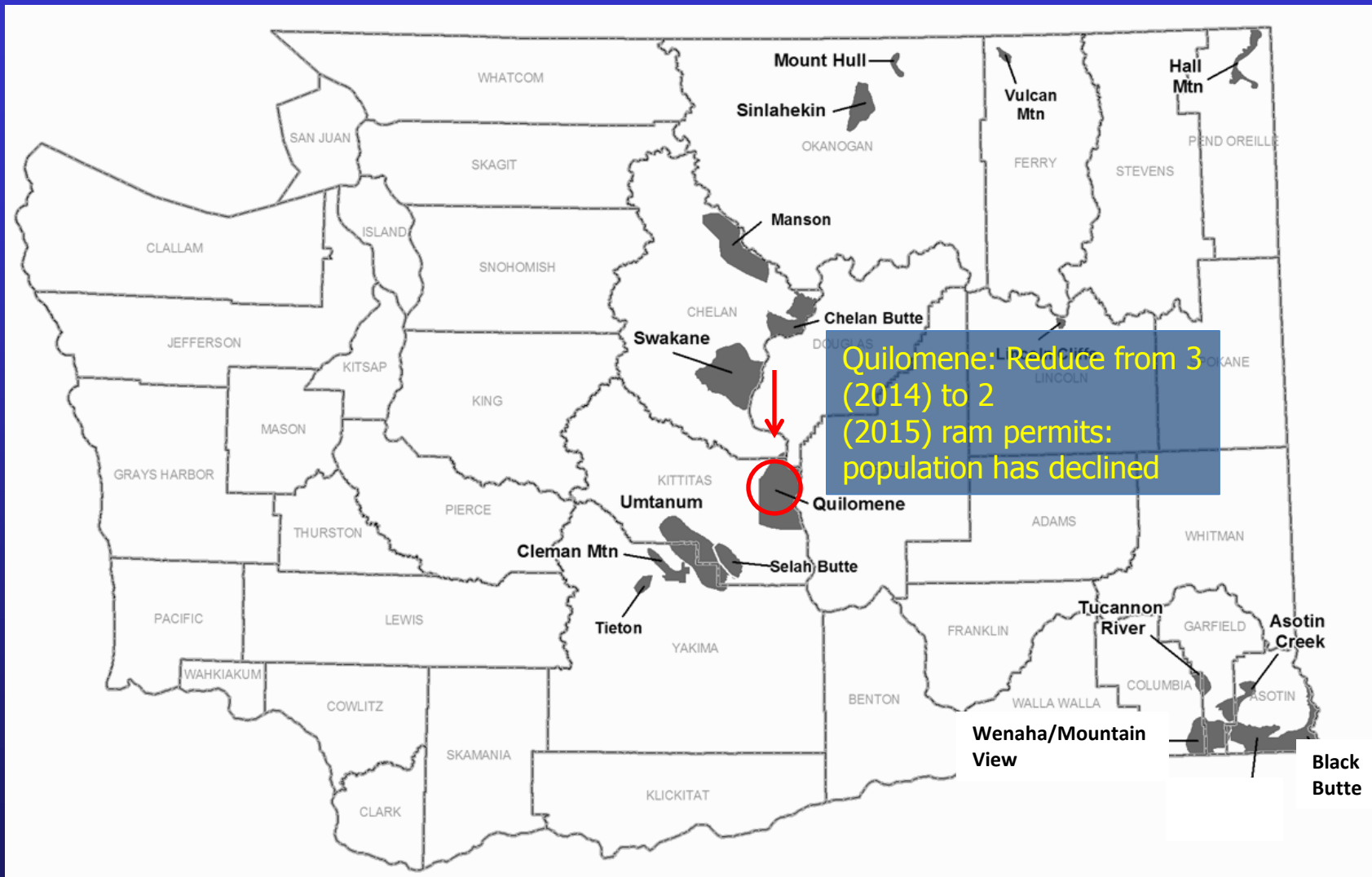
# Minor Revisions to Ram Permits (‘California’ Bighorns)



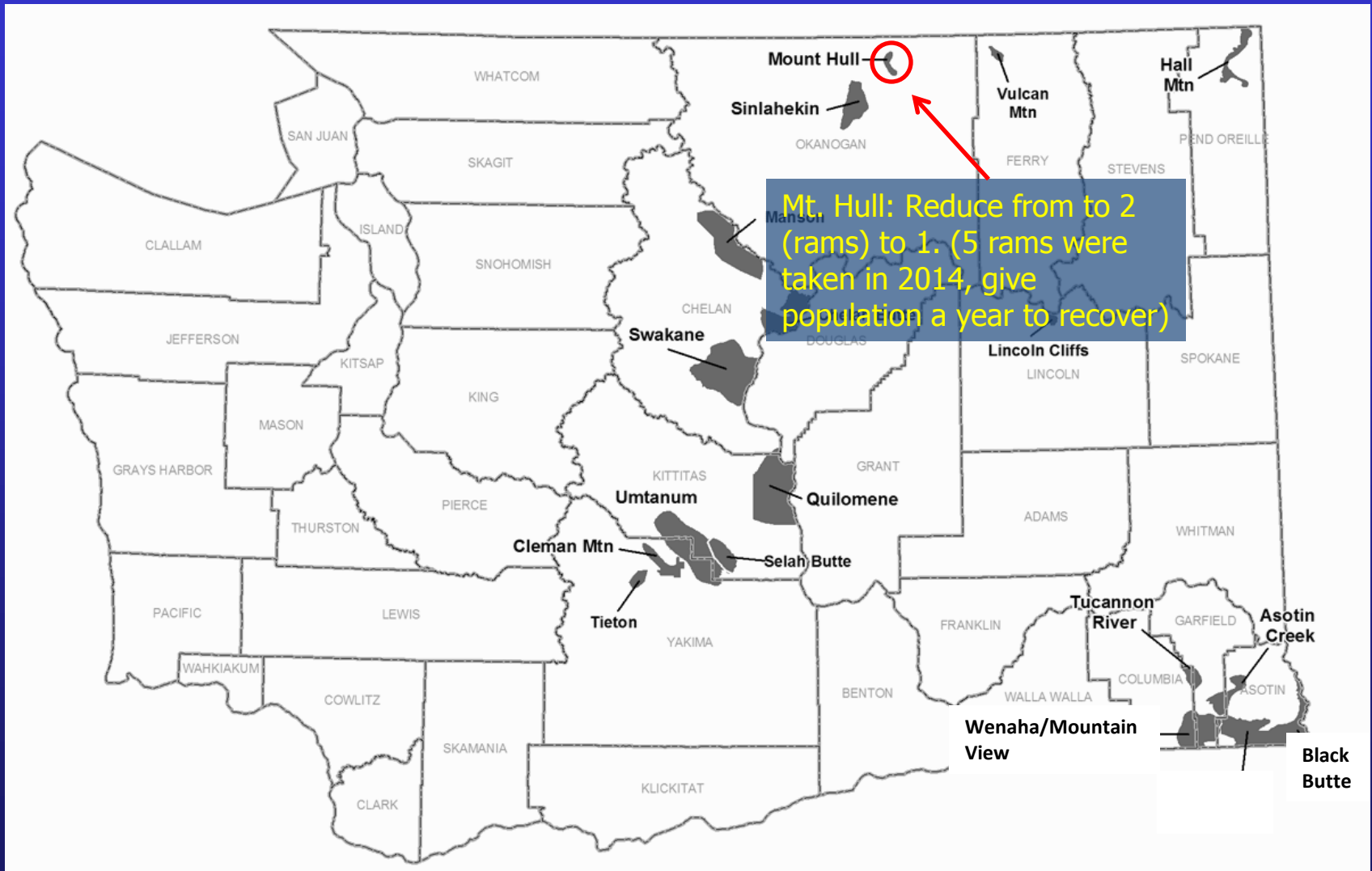
# Minor Revisions to Ram Permits (‘California’ Bighorns)



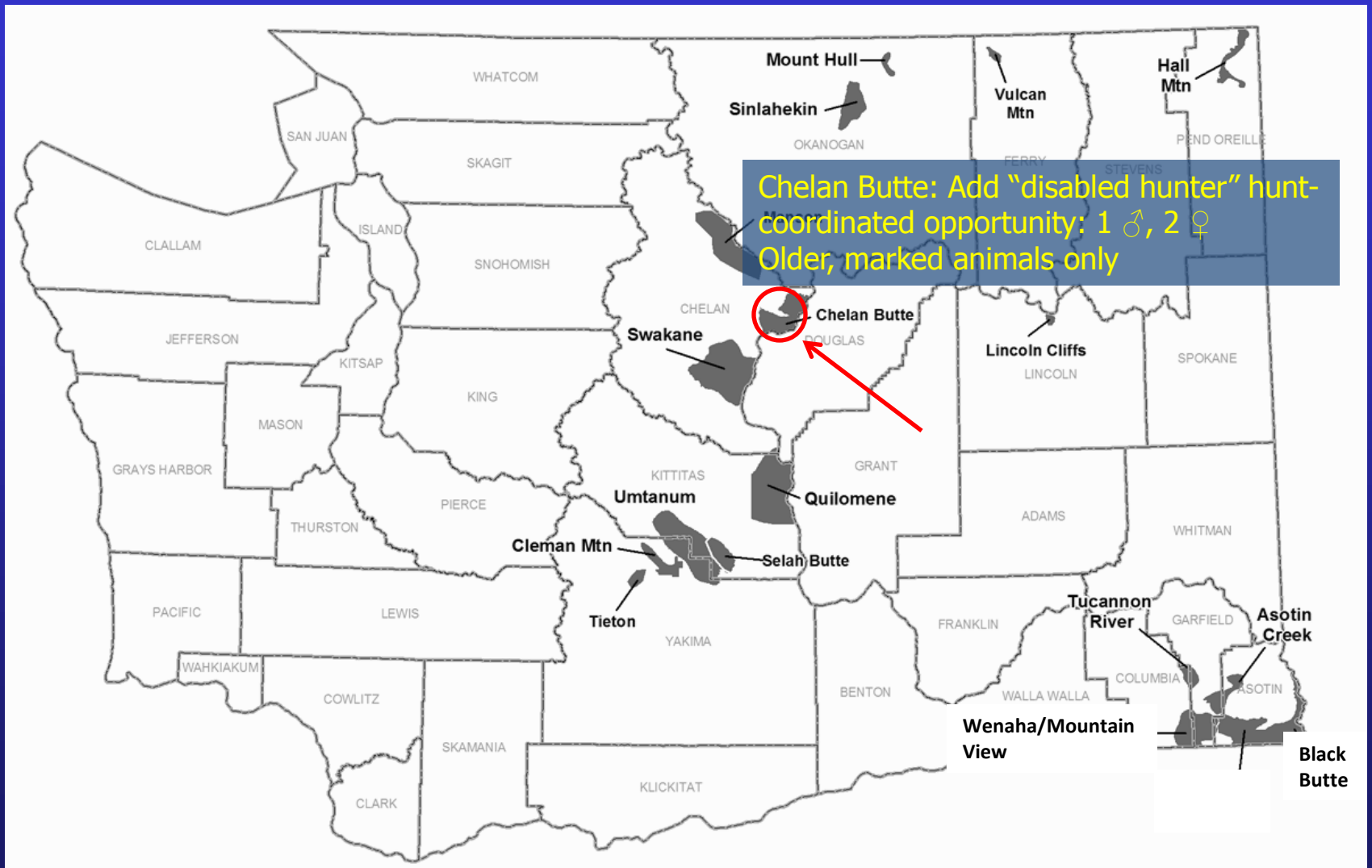
# Minor Revisions to Ram Permits ('California' Bighorns)



# Minor Revisions to Ram Permits ('California' Bighorns)

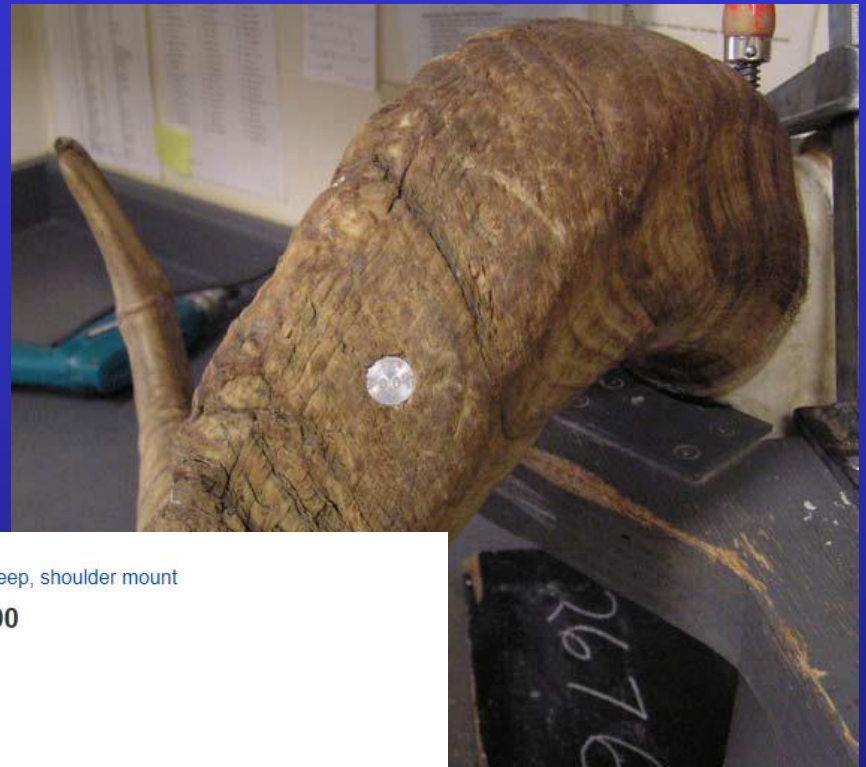


# Minor Revisions To Ram Permits ('California' Bighorns)





# Bighorn sheep horns



Bighorn Sheep, shoulder mount

**\$1,800.00**

Buy It Now



Big Horn Sheep Head Wall Mount Taxidermy

**\$800.00**

Buy It Now

**\$300.00**

0 bids

# Bighorn Sheep Horns

- Issue 1:
  - 12-284 defines horn as paired sheaths attached to the bony core
  - This has provided a loophole for mischief-makers who engage in commerce with detached horns, one-at-a-time
  - Our proposed revision (deleting "*attached to skull*" and adding "*The horns do not have to be paired and may include one horn*") closes this loophole

# Bighorn Sheep Horns Found Afield

- Issue 2: Ambiguity and uncertainty in WAC interpretation
  - 12-284 (designed with legal harvest in mind): horns must be pinned
  - 12-287: illegal to possess dead wildlife except by permit (but is silent regarding conditions under which a permit might be issued)

This has allowed 2 conflicting interpretations:

- 1. Public can't keep picked-up horns, or*
- 2. Bring them in, get them pinned, ask for (and expect) a permit*

# Bighorn Sheep Horns Found Afield

- Proposed resolution:

*"It is unlawful...to possess horns of a bighorn sheep ram originating in Washington except as described in subsections (2) and (4) of this section. Horns of bighorn sheep found dead in Washington must be left in the field."*

- Subsection 2 allows hunters to retain legally harvested horns (and provides for obligatory marking)
- Subsection 4 allows for permitting of horns otherwise obtained but only as stipulated

# Commerce In Bighorn Sheep Horns

- Issue 3: Ambiguity about when the Department would issue a permit
  - 12-284 prohibits commerce without a permit (but provides no guidance on when a permit might be issued)
  - 12-071 prohibits commerce without a permit (also without guidance, but context here includes bear gall-bladders and velvet antlers)
  - Our proposed clarification: *“Permits will only be granted where such sale, purchase, or barter will specifically benefit bighorn sheep conservation or management.”*

# What about older trophies, obtained (in Washington or elsewhere) prior to west-wide marking program?

- Vast majority of these were legally taken
- However, unmarked horns are typical indications of illegal take
- Without marks, enforcement is relegated to using officer discretion and may have a weak case to prosecute when poaching was involved

## Proposed resolution (floor change)

In the case of horns originating from a bighorn sheep legally obtained prior to the initiation of permanent marking in the jurisdiction of its origin, the Director is authorized to issue a permit for possession (but not for resale); such a permit must subsequently be retained with the horns. After such a permit is issued, the horns must be presented for permanent marking to a WDFW office within 30 days.

# WAC 232-28-284 Raffles/Auctions

For mountain goats:

- 1 statewide auction

- 1 statewide raffle

For 'California' bighorn sheep:

- 1 statewide auction

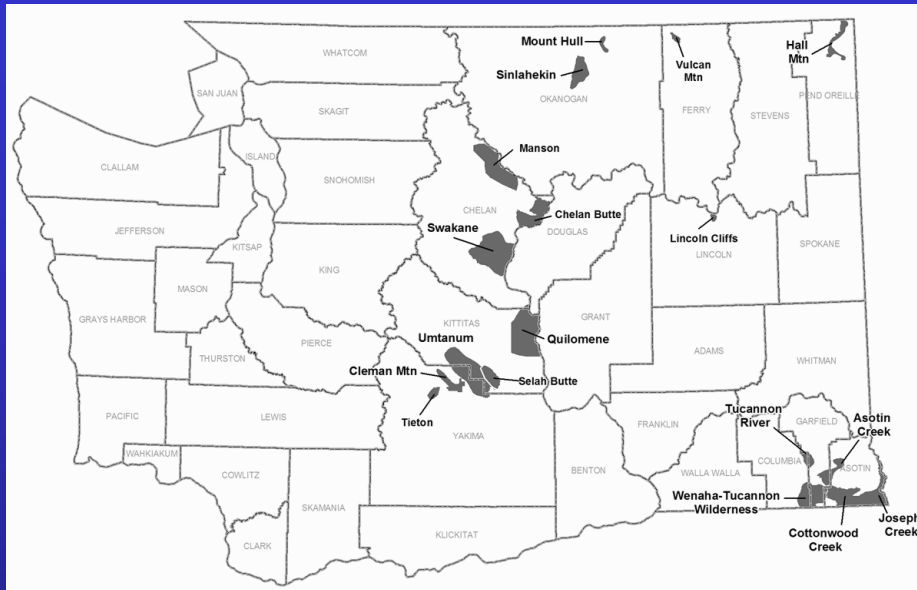
- 1 statewide raffle

- Southcentral big-game raffle

- Northcentral big-game raffle (choose 3 from 5)



# WAC 232-28-284 Raffles/Auctions



Current approach: If 2 or more draw permits, then

\*Herd is available for auction/raffle,

Otherwise,

\*Herd is not open for raffle/auction

- Ensures herd is large
- Provides predictability...but

# Unintended consequences

## Too many, or too few



# WAC 232-28-284 Raffles/Auctions Recommended Resolution

- Allow Director flexibility
- Will determine which herd is eligible based on where auction/raffle hunters went in previous year
- Will know by 1 January which to open for coming autumn (earlier than currently, in time for auctions)
- Director will base allocation on consistent protocol, skipping years for that herd if previous pressure too high
- Will allow opening more herds to auction/raffle while mitigating 'boom and bust'



# Questions?



# Additional moose harvest: Justification

## 6. Preliminary data from demographic study

- 51 adult female moose fitted with GPS collars (27 in December 2013, 24 in December 2014)
- To date, 5 mortalities (1 hunting, 3 natural [non-predation], 1 unknown but unlikely predation)
- Pregnancy rate: 79% - a bit on the low side
- Mean rump fat = 1.0 cm (SD = 0.7 cm), tending to suggest animals are lean and not terribly well fed
- Calf survival (June 2014 through February 2015):  
~ 68% (not bad)

