



**Lands 20/20 Overview  
and  
Proposed Acquisition Grant  
Submittals For 2016**

**Cynthia Wilkerson and Lauri Vigue  
Wildlife Program**

# Lands 20/20 Presentation

- WDFW Mission/Strategic Plan
- Conservation tools
- Land acquisition priorities
- Acquisition steps
- Acquisition funding sources
- 2016 Project Proposals
- Public comment summary
- Next steps



# Updates





# Why do we buy land?

- *To protect, restore and enhance fish and wildlife and their habitats*
- *To provide sustainable and wildlife-related recreational opportunities*



# WDFW Conservation Tools

**Species Augmentation**

**Land Use Planning Assistance**

**Private Lands Partnerships**

**Regulatory**

**Real Property Management and Transactions**



D A Kuehn



# Goals

Goal #1: Conserve and protect native fish and wildlife.

Goal #2: Provide sustainable fishing, hunting, and other wildlife- related recreational and commercial experiences.

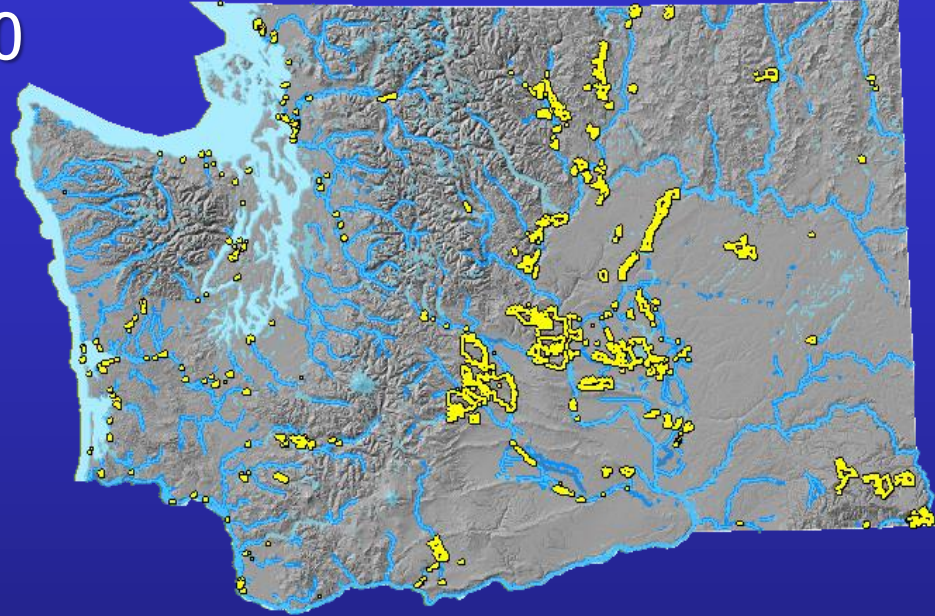
Goal #3: Promote a healthy economy, protect community character, maintain an overall high quality of life, and deliver high-quality customer service.

Goal #4: Build an effective and efficient organization by supporting our workforce, improving business processes, and investing in technology.



# WDFW Lands

- Wildlife Areas = ~1,000,000 acres
  - Open 365 days/ year
  - Four million visitors/ year
- Boat launch/Water Access Sites = 700





# WDFW Land Acquisition Principles Conservation Initiative

- Optimize, pursue, and use partnerships
- Evaluate whether acquisition is the best conservation alternative
- Pursue lands that provide long-term opportunities
- Pursue lands that will provide long-term ecological value
- Place a higher value on acquisitions that create blocks of ownership
- Pursue easements or other non-fee title options on smaller tracts
- Prioritize lands that are ecologically or socially important



# WDFW Land Acquisition Priorities

## Aquatic Habitats



# WDFW Land Acquisition Priorities

## Critical Habitat for Specific Species





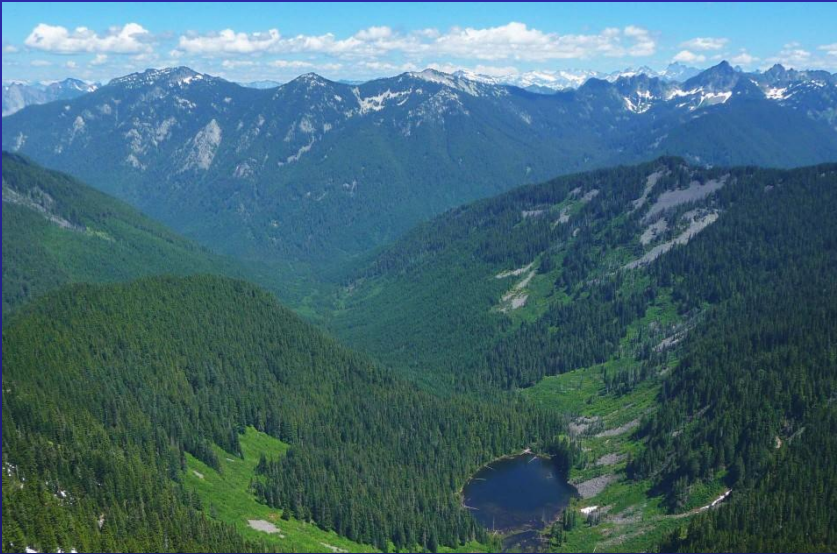
# WDFW Land Acquisition Priorities

## Terrestrial Habitats



# WDFW Land Acquisition Priorities

## Statewide Priority Landscapes



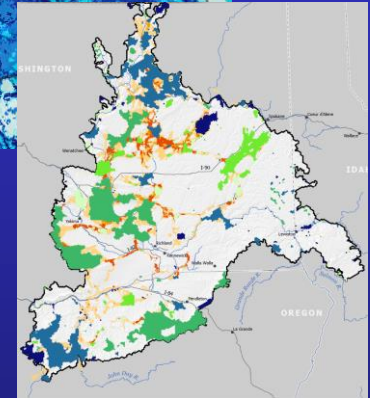
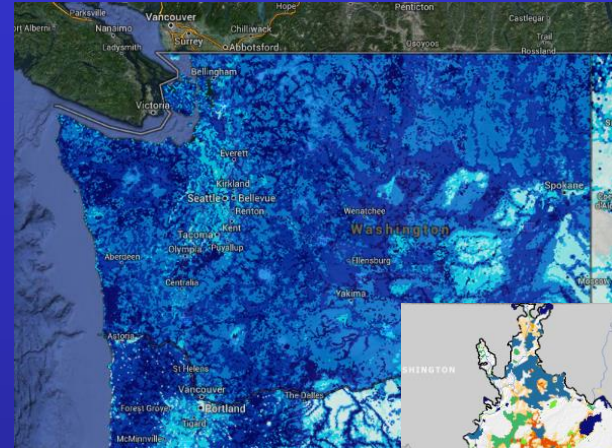


# Other Acquisition Priorities

- Provide access to water and lands already held in public ownership
- Secure private lands historically open to public recreation or that would provide quality hunting opportunities
- Help prevent or reduce wildlife damage or conflict

# Acquisition Steps

Scoping and Need



Evaluation and Prioritization



Land Transaction



Integrating Ownership





# Land Transaction Stages

- Appraisal
- Appraisal Review
- Negotiations
- Purchase Option
- Fish and Wildlife Commission Approval
- Close



# Major Acquisition Funding Sources

- WA State Recreation and Conservation Office (RCO)
  - Aquatic Lands Enhancement Account (ALEA), Washington Wildlife and Recreation Program (WWRP), Salmon Recovery Funding Board (SRFB)



- USFWS
  - Cooperative Endangered Species Conservation Fund "Section 6"
  - National Coastal Wetland Conservation Act
  - North American Wetland Conservation Act



# Strengthen common, shared values

**Open Spaces**



**Protection of Water**



**Working Lands**



**Rural Economy**



**Outdoor Recreation**



# Conservation Partners

Recreation & Conservation Funding Board

Trust for Public Land

Local Land Trusts

Conservation Northwest

The Nature Conservancy

Mule Deer Foundation

Duke Foundation

US Fish & Wildlife Service

US Forest Service

DNR

State Parks

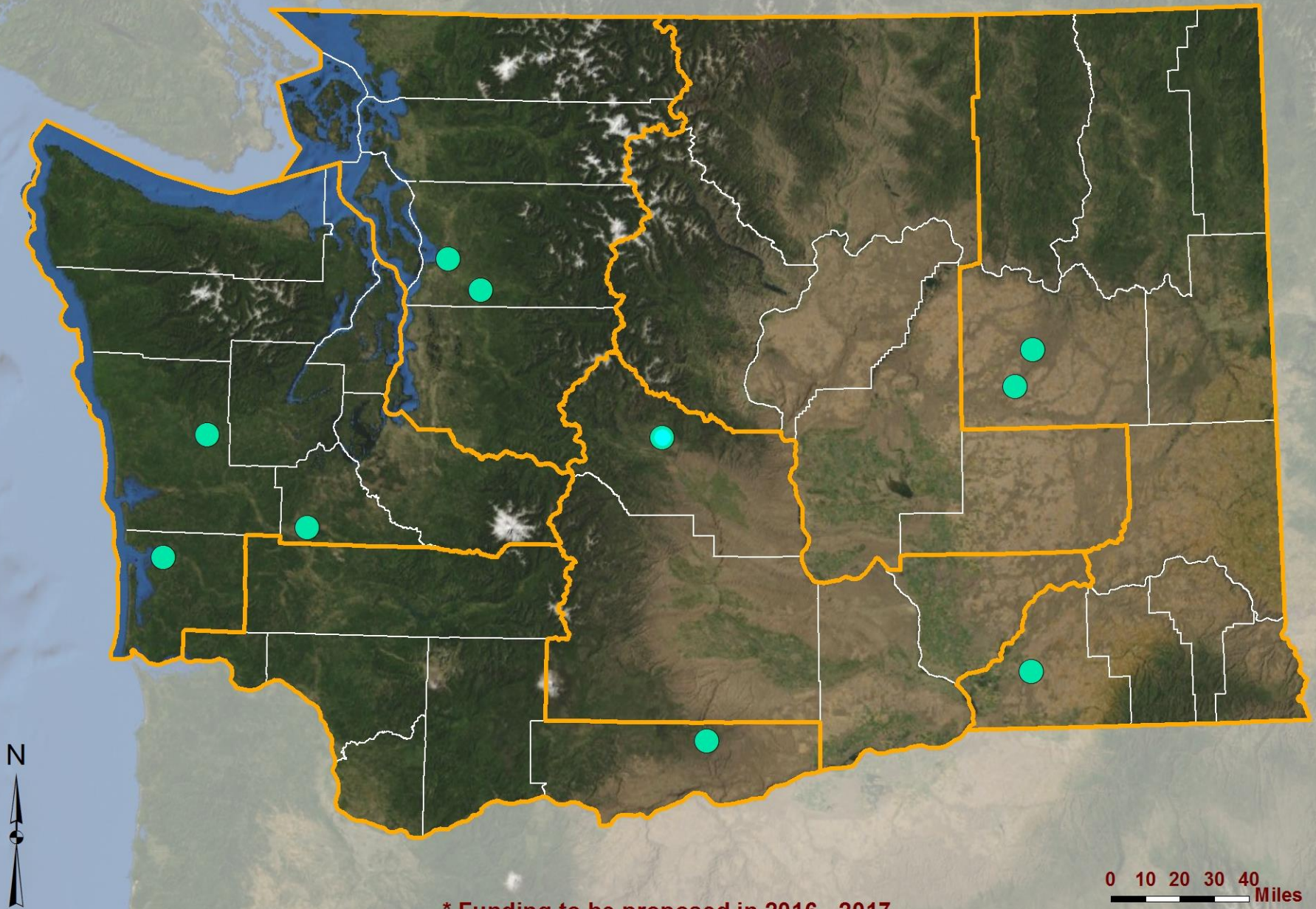
BLM

Private landowners.





# 2017 - 2019 WDFW Lands Acquisition Proposals



\* Funding to be proposed in 2016 - 2017

# Lands 20/20 Overview

## Region 1

- Lake Creek
- Touchet River and Grassland 2016
- Seven Springs

## Region 3

- Teanaway Valley



# Lands 20/20 Overview

## Region 4

- Lower Skykomish-Snoqualmie Valley
- Ebey Island

## Region 5

- Bowman Creek

# Lands 20/20 Overview

## Region 6

- 7400 Road Access
- South Sound Prairies
- Willapa Bay Shoreline



# Region 1 Proposed Project

Lake Creek

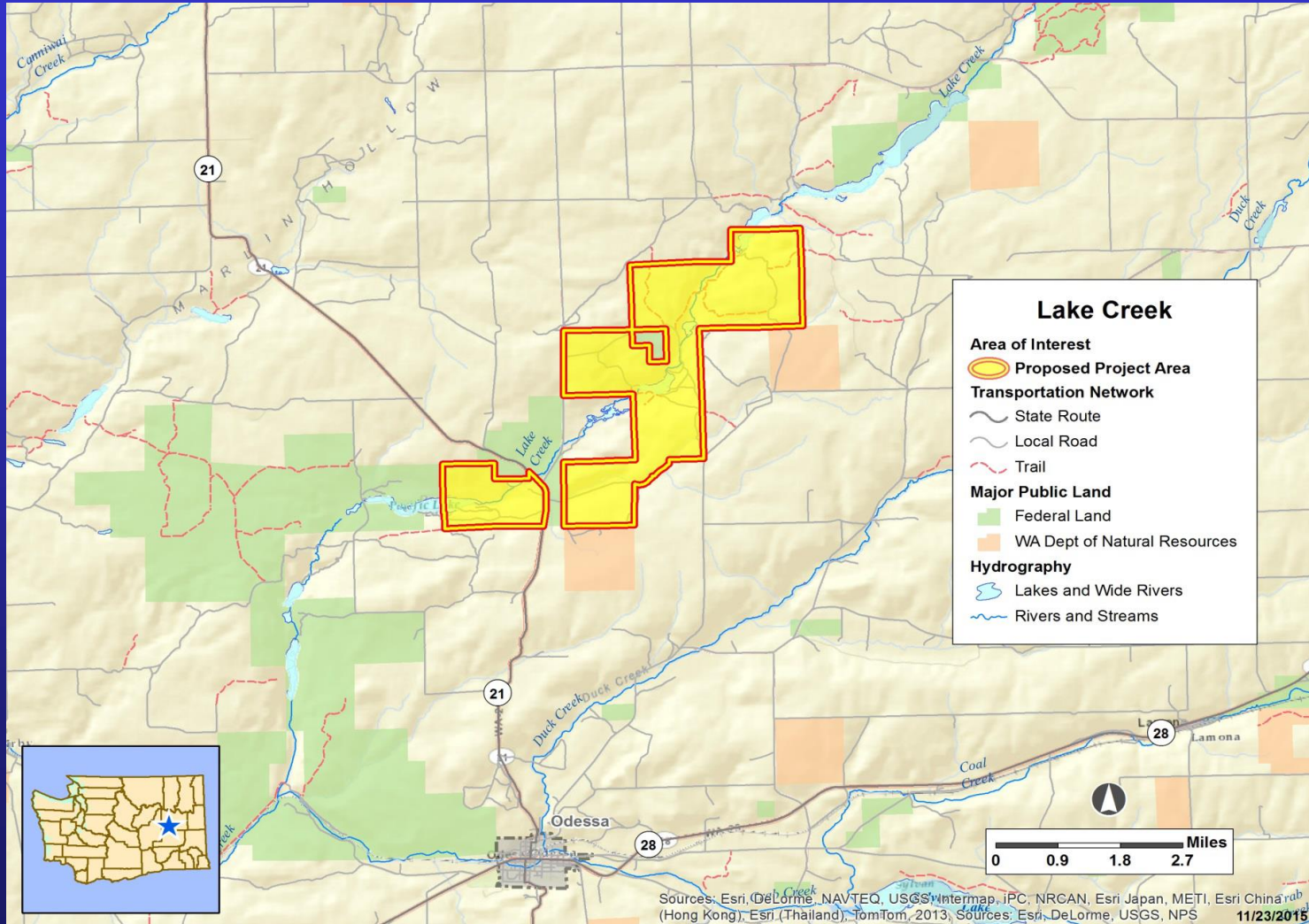
Acres: 5,542

Funding Request:  
WWRP

Critical Habitat  
Acquisition Type:  
Fee Simple



# Lake Creek





# Region 1 Proposed Project

## Lake Creek

- Critical habitat for sage grouse and sharp-tailed grouse
- Over 90% shrub-steppe habitat and also includes wet meadows, aspen and open water
- **Mule deer and white tailed jackrabbit connectivity areas**
- Provides connectivity to public lands
- Hunting, wildlife viewing and fishing

Local support: Inland NW Land Conservancy, Spokane Audubon, Mule Deer Foundation, Bureau of Land Management, Pheasants Forever, Ducks Unlimited

# Lake Creek Public Comments

- Support – 5
- Opposed - 6

# Region 1 Proposed Project

Touchet River and Grassland 2016

Acres: 2,560

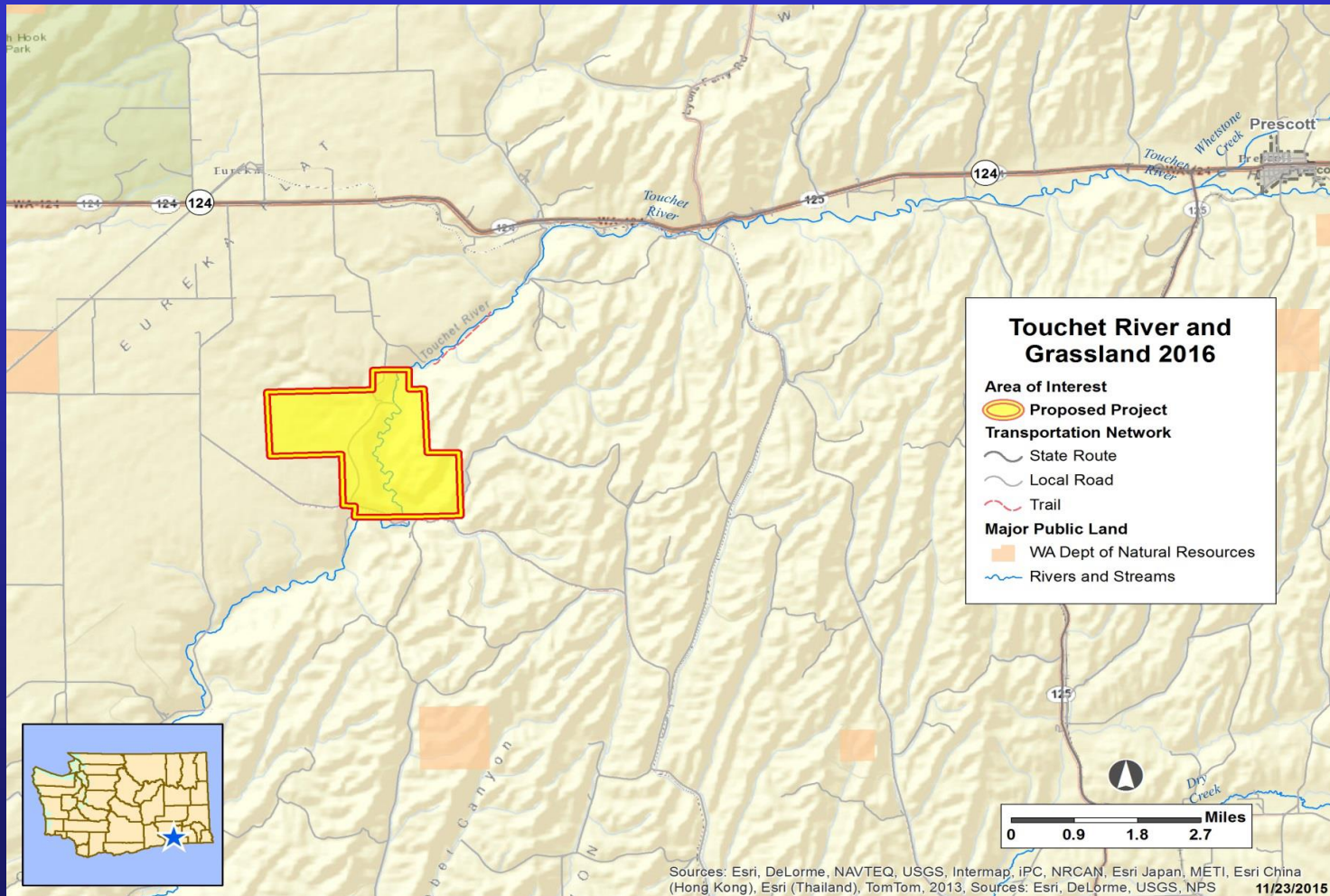
Funding Request:  
WWRP Riparian

Acquisition Type:  
Fee Simple





# Touchet River and Grassland 2016



# Region 1 Proposed Project

## Touchet River and Grassland 2016

- Critical riparian habitat for steelhead and bull trout
- Intact floodplain and river channel
- Ferruginous hawk and yellow billed cuckoo
- Mature cottonwood habitat, inland sand dunes
- White-tailed deer, mule deer and upland birds
- Hunting, wildlife viewing and fishing

Local support: Pheasants Forever, Tristate Steelheaders, Richland Rod and Gun Club, Snake River Recovery Board, Confederated Tribes of the Umatilla Indian Reservation

# Touchet River and Grassland Public Comments

- Support – 18
- Opposed - 4



# Region 1 Proposed Project

Seven Springs

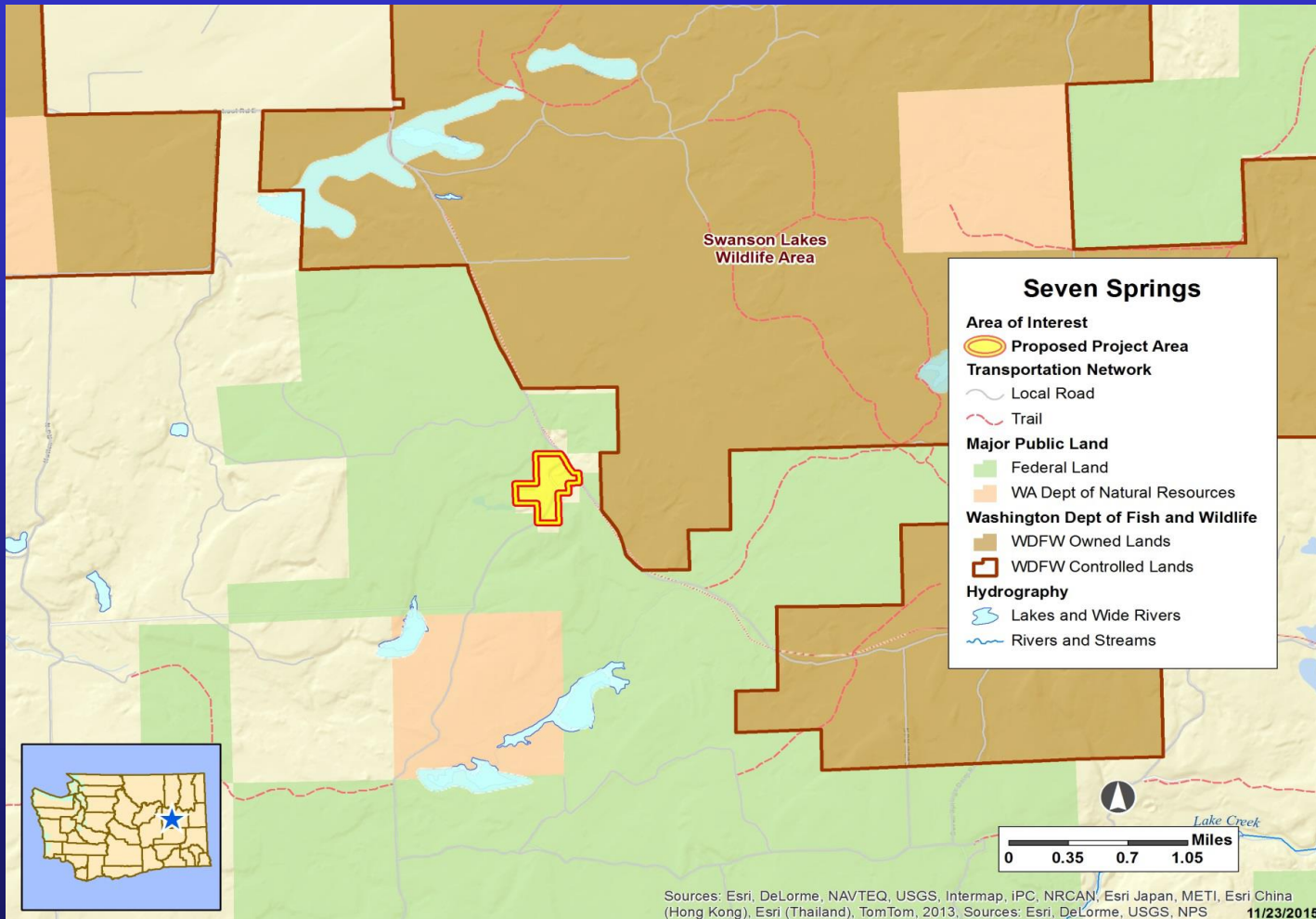
Acres: 59

Funding Request:  
Capital Budget

Acquisition Type:  
Fee Simple



# Seven Springs



# Region 1 Proposed Project

## Seven Springs

- New office for Swanson Lakes WLA
- Shrub-steppe, grassland and aspen habitats
- Greater sage grouse, sharp-tailed grouse
- Hunting, hiking, outdoor photography

Local support: Bureau of Land Management, Lincoln Conservation District, Spokane Chapter of Audubon Society, Inland NW Land Conservancy



# Seven Springs Public Comments

- Support – 3
- Opposed - 3

# Region 3 Proposed Project

Teaway Valley

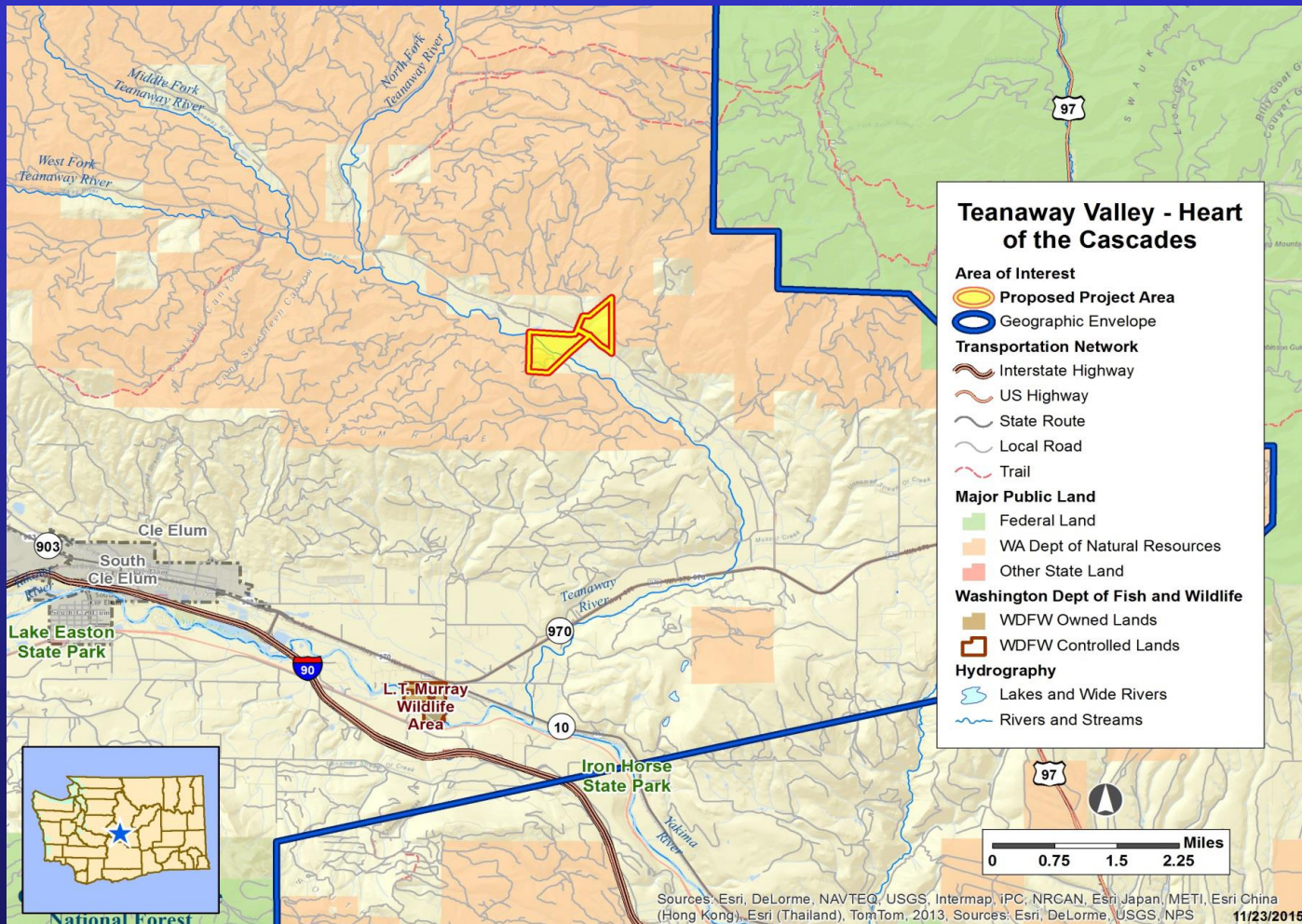
Acres: 215

Funding Request:  
WWRP Riparian

Acquisition Type:  
Fee Simple



# Teanaway Valley





# Region 3 Proposed Project

## Teaway Valley

- Protects mainstem Teaway River and 2 fish bearing tributaries
- Floodplain, mature conifer forest, wetlands and meadow habitat
- ESA listed northern **spotted owl, gray wolves, bull trout, steelhead**
- Connects with the **Teaway Community Forest**
- Hunting, fishing and wildlife viewing

Local support: Trust for Public Land, Kittitas County Commissioners, Washington Water Trust, Kittitas Conservation Trust, Teaway Community Forest Advisory Committee

# Teanaway Valley Public Comments

- Support – 15\*
- Opposed - 0

\*2 comments received supported non-motorized vehicles

# Region 4 Proposed Project

## L. Skykomish- Snoqualmie Valley

Acres: 280

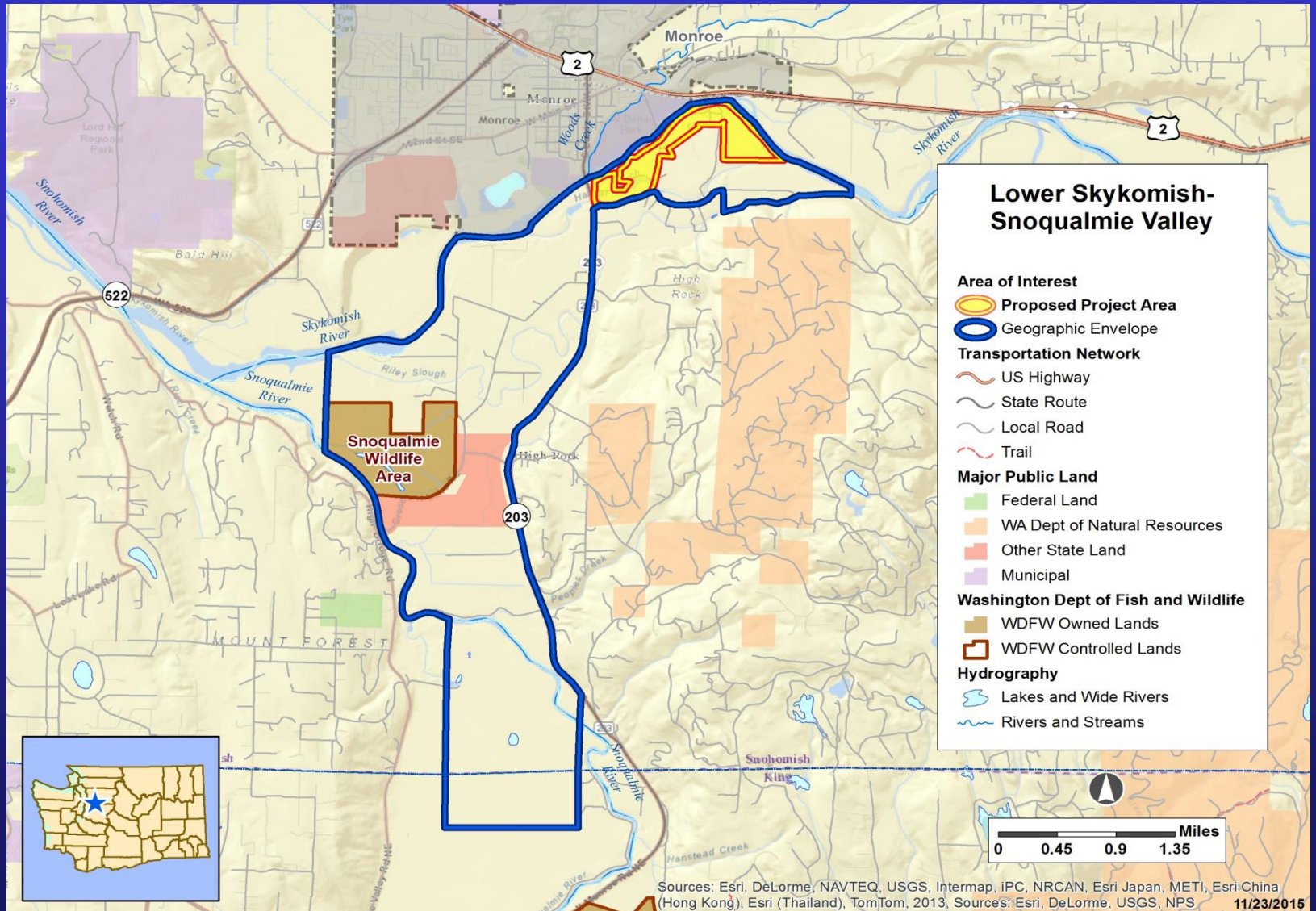
Funding Request:  
WWRP Urban/Water  
Access

Acquisition Type:  
Fee Simple





# Lower Skykomish – Snoqualmie Valley



# Region 4 Proposed Project

## Lower Skykomish Snoqualmie Valley

- Replaces farmed upland habitat converted by salmon recovery estuary restoration efforts
- Critical habitat for ESA listed Chinook
- Wetland and Riparian habitat
- Water access for fishing, pheasant release site, wildlife viewing, upland bird and waterfowl hunting

Local support: Snohomish County Parks, Snohomish County Sportsman, Snohomish Sportsman, City of Monroe, PCC Farmland Trust

# **L. Skykomish Snoqualmie Valley Public Comments**

- Support - 10



# Region 4 Proposed Project

Ebey Island

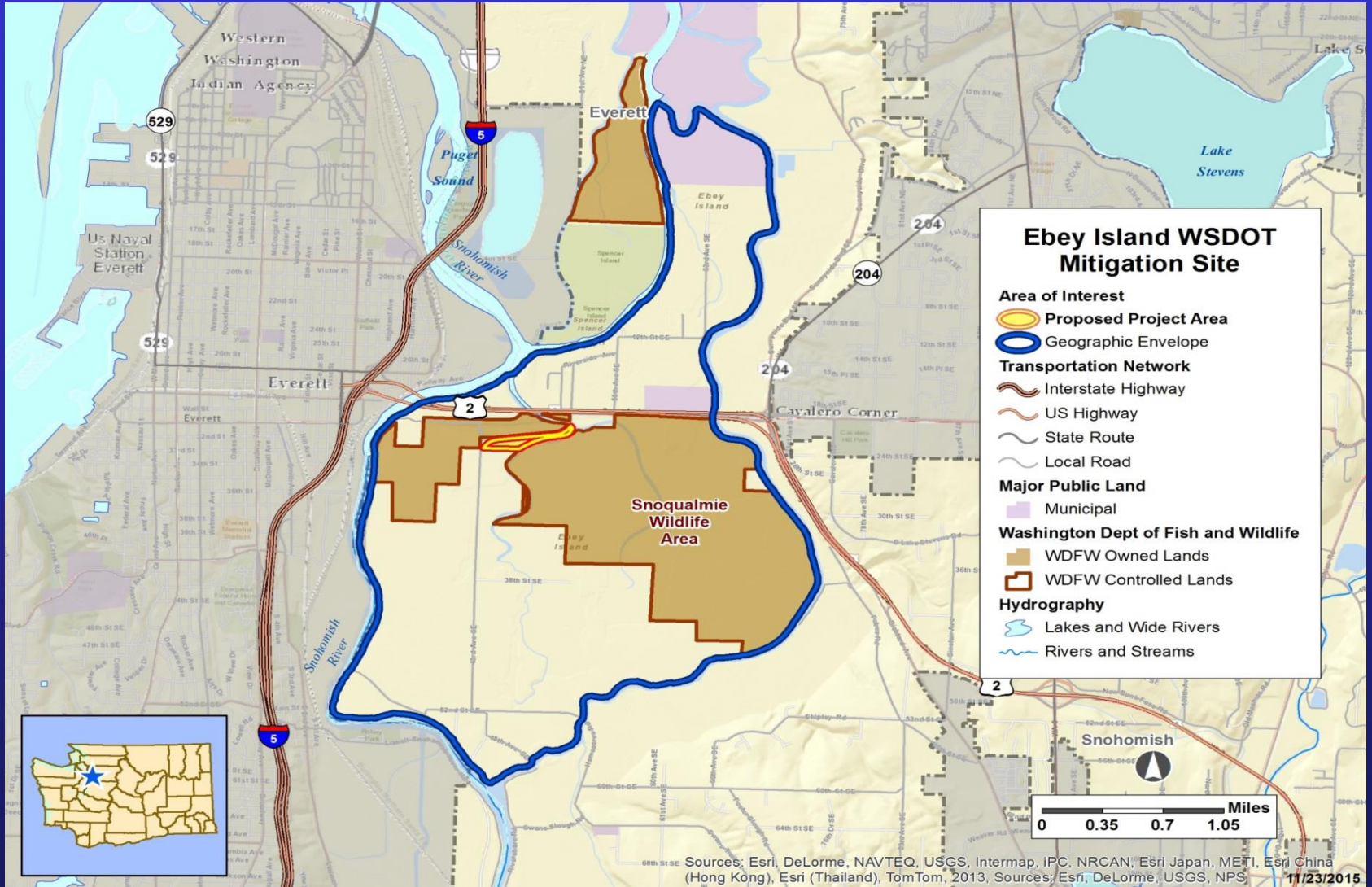
Acres: 13

Funding Source:  
WSDOT Mitigation

Acquisition Type:  
Fee Simple



# Ebey Island



# Region 4 Proposed Project

## Ebey Island

- Pacific flyway waterfowl migration
- Wetland and riparian habitat
- ESA listed Chinook and bull trout
- Waterfowl hunting, wildlife viewing, boat access

Local support: Snohomish Sportsman's Club,  
YMCA



# Region 5 Proposed Project

Bowman Creek

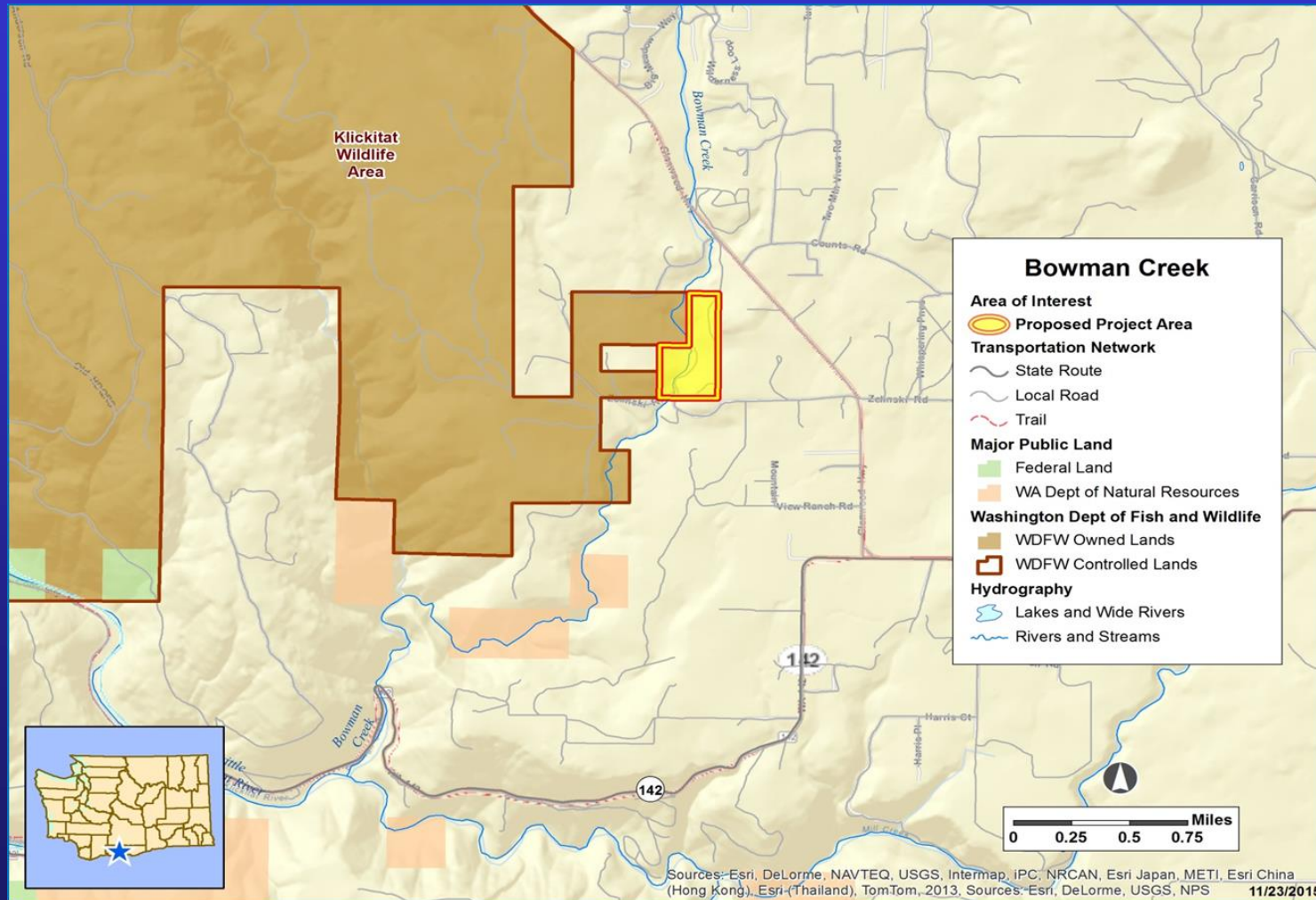
Acres: 60

Funding Source:  
WWRP Riparian

Acquisition Type:  
Fee Simple



# Bowman Creek



# Region 5 Proposed Project

## Bowman Creek

- Western grey squirrel habitat
- Black tailed/Mule deer critical winter range
- Oregon white oak woodlands and riparian habitats
- Hunting, wildlife viewing, fishing access

Local support: Columbia Land Trust



# Bowman Creek Public Comments

- Support – 14\*
- Opposed - 2

\*Two comments received were not in favor of grazing on the site

# Region 6 Proposed Project

7400 Road

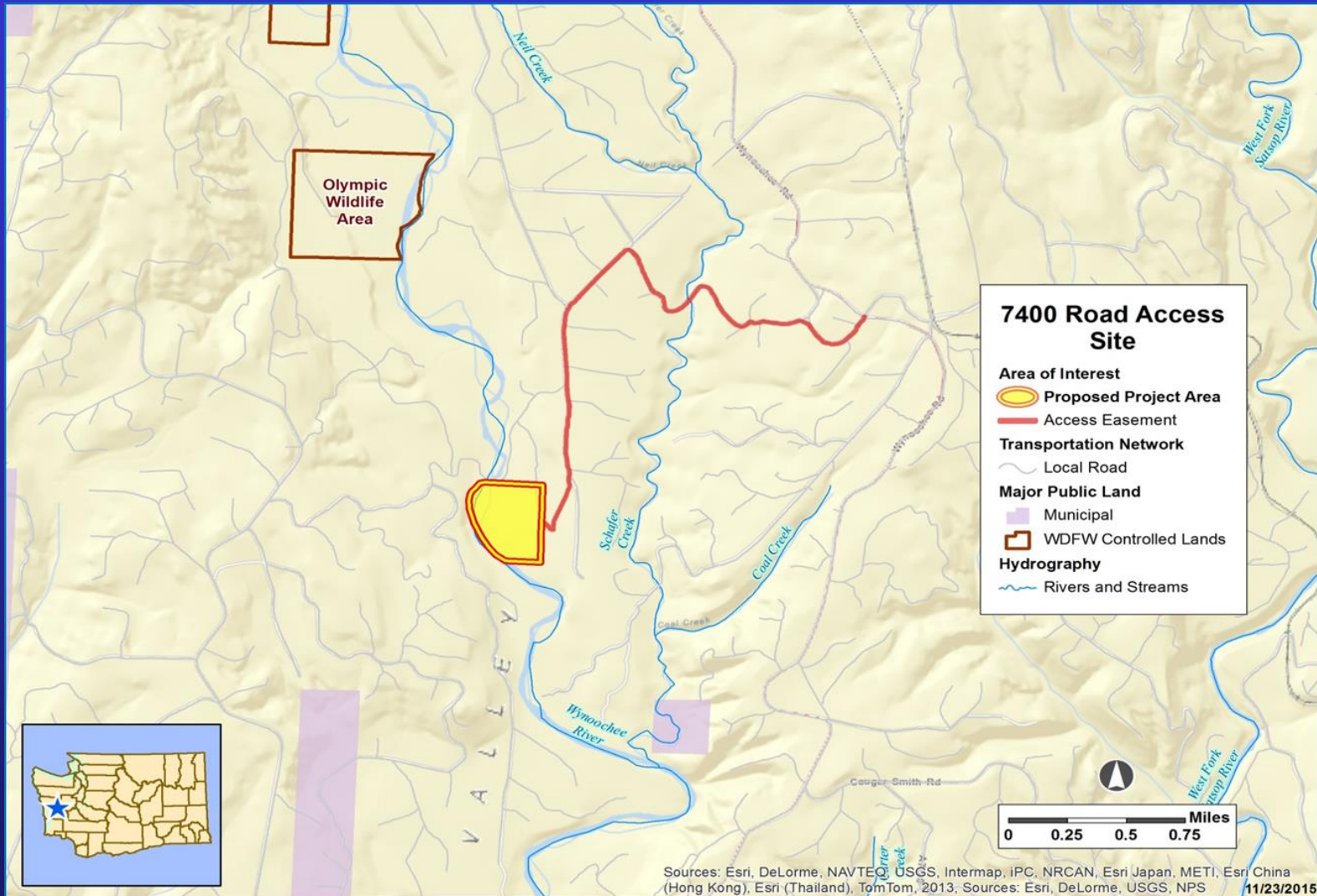
Acres: 15

Funding Source:  
WWRP Water Access

Acquisition Type:  
Easement



# 7400 Road





# Region 6 Proposed Project

## 7400 Road

- Critical for meeting harvest levels of hatchery origin summer and winter steelhead
- Angler access to Wynoochee River
- Boat and angling access

Local support: Grays Harbor County, Grays Harbor Poggie Club, Inc.

# 7400 Road Public Comments

- Support – 161

# Region 6 Proposed Project

South Sound Prairies

Acres: 491

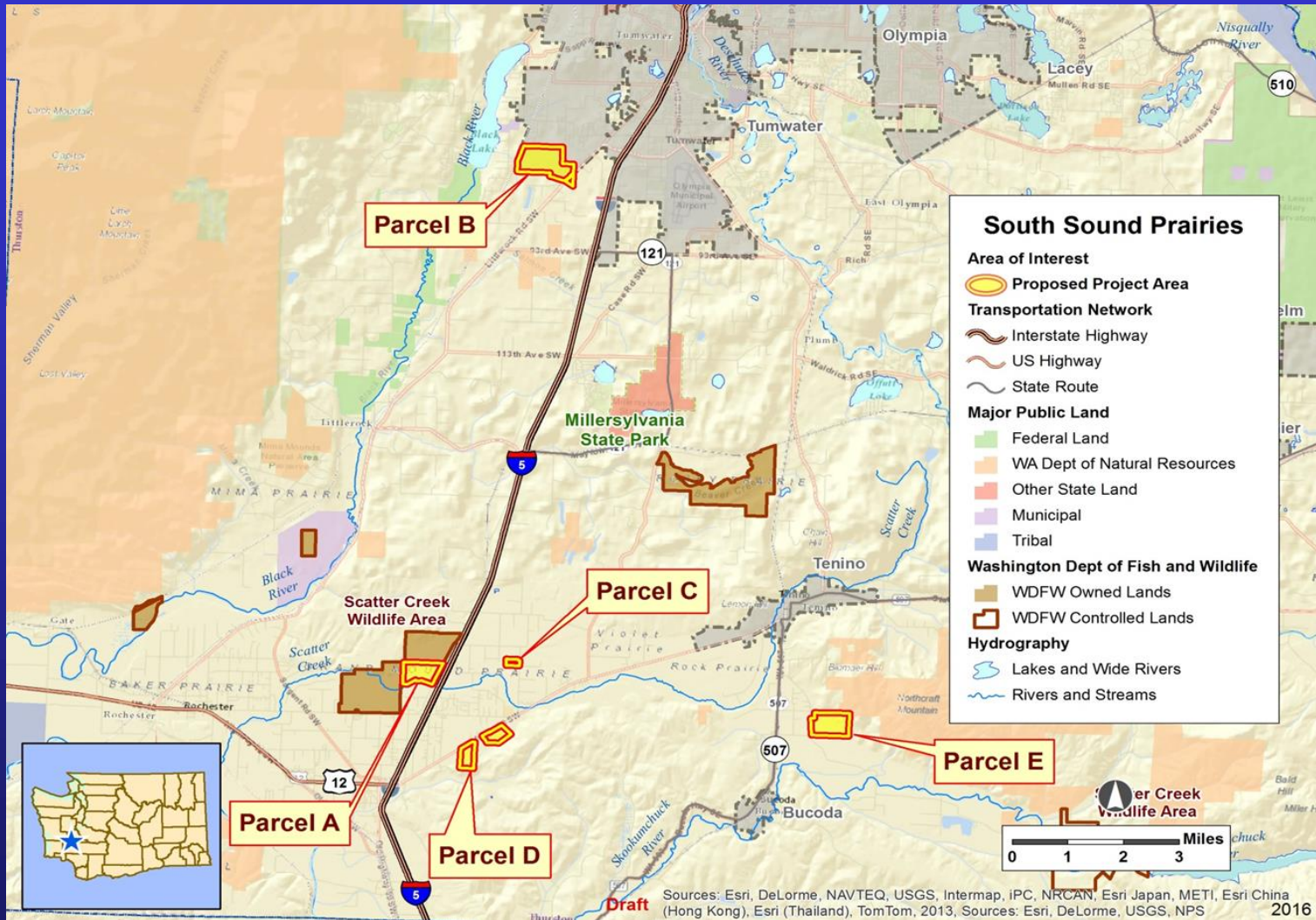
Funding Source:  
WWRP Urban/Section 6

Acquisition type: Fee  
simple/conservation  
easement





# South Sound Prairies



# Region 6 Proposed Project

## South Sound Prairies

- Critical habitat for **Mazama pocket gopher**
- Prairie and oak, freshwater wetlands and riparian habitats
- Taylor's checkerspot and Mardon skipper  
butterfly species
- Wildlife viewing and low impact trail system
- Supports Thurston County HCP

Local support: U.S. Department of Agriculture, Natural Resources Conservation Service, U.S. Fish and Wildlife Service, U.S. Department of Defense, Center for Natural Lands Management, Capital Land Trust, Nisqually Land Trust, Thurston County

# South Sound Prairies Public Comments

- Support – 2
- Oppose - 1



# Region 6 Proposed Project

Willapa Bay Shoreline

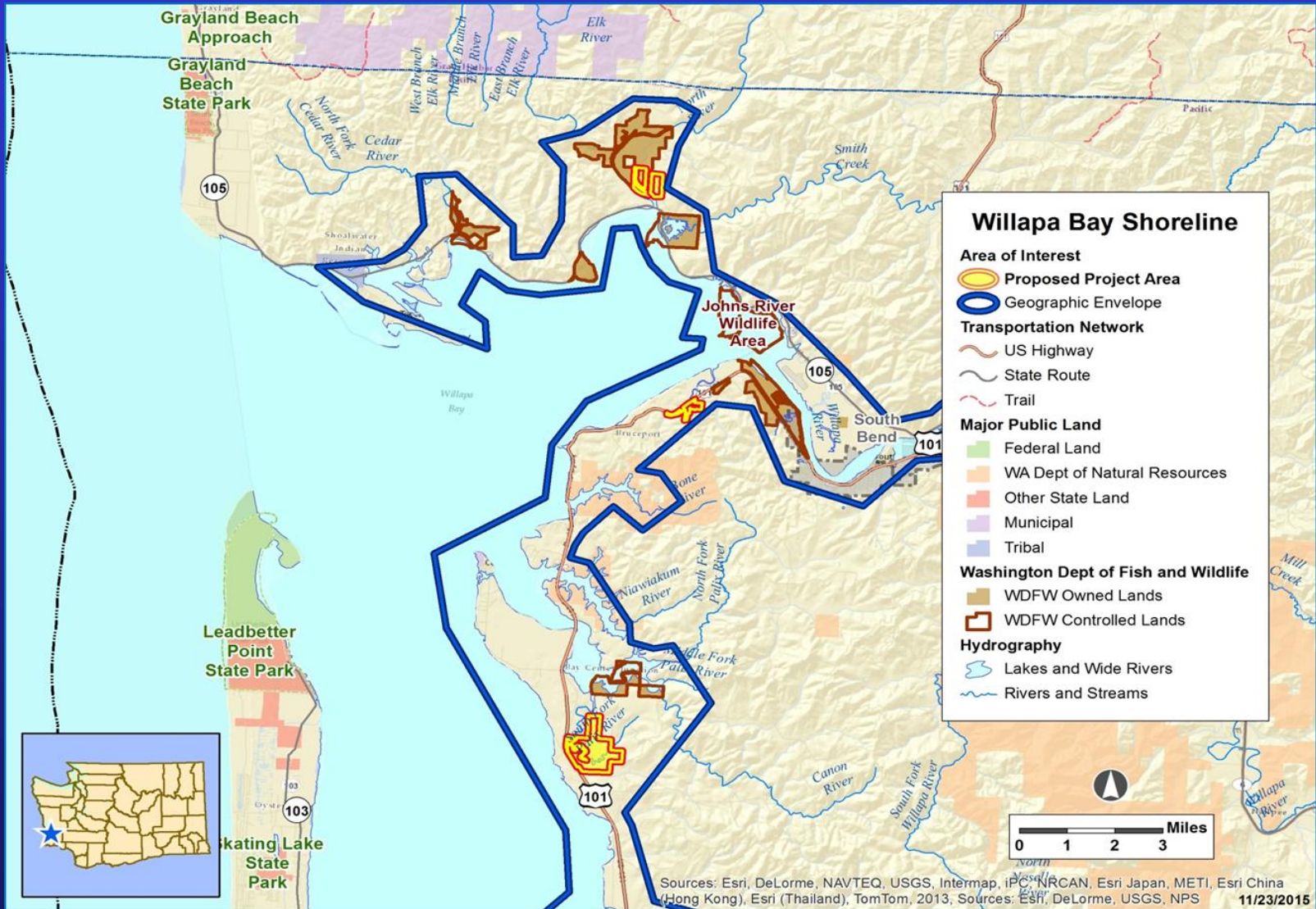
Acres: 733

Funding Source:  
North American  
Wetland Conservation  
Act, Duck Stamps

Acquisition type: Fee  
simple



# Willapa Bay Shoreline



# Region 6 Proposed Project

## Willapa Bay Shoreline

- ESA listed green sturgeon and eulachon; coastal cutthroat (federal species of concern)
- Major resting area for waterfowl, shorebird migration
- Preserves water quality flowing into Willapa Bay
- Wetlands, riparian and forested buffers
- Wildlife viewing, hunting and fishing

Local support: U.S. Fish and Wildlife Service, Forterra, Wildlife Forever Fund, Tagney Jones Family Fund



# Willapa Shoreline Public Comments

- Support - 5

# Lands 20/20 Public Comments



# Public Comment Summary

- Total comments received 274
- Supportive of acquisitions - 24
- Opposed of acquisitions - 24



# Next Steps

- Commissioners' comments are due on March 11, 2016.
- Director Approval
- RCO Lands Forum- March 2016
- Apply for funding
- Finalize acquisitions



# Questions?

