

A scenic view of a river flowing through a forest with autumn foliage. The river is in the foreground, with several large rocks visible in the water. The forest is dense and colorful, with trees in shades of green, yellow, and orange. The sky is blue with some clouds.

# 2017 LANDS 20/20 PROPOSALS

Fish and Wildlife Commission Meeting  
March 17<sup>th</sup> & 18<sup>th</sup>, 2017

# Why do we buy land ?

- To protect, restore and enhance fish and wildlife and their habitats
- To provide sustainable and wildlife-related recreational opportunities

# WDFW Land Acquisition Principles

- Evaluate if acquisition is the best conservation alternative
- Optimize, pursue and use partnerships
- Prioritize lands that are ecologically or socially important
- Evaluate long term management value
- Consider access/recreation value
- Consider local community value

# Major Acquisition Funding Sources

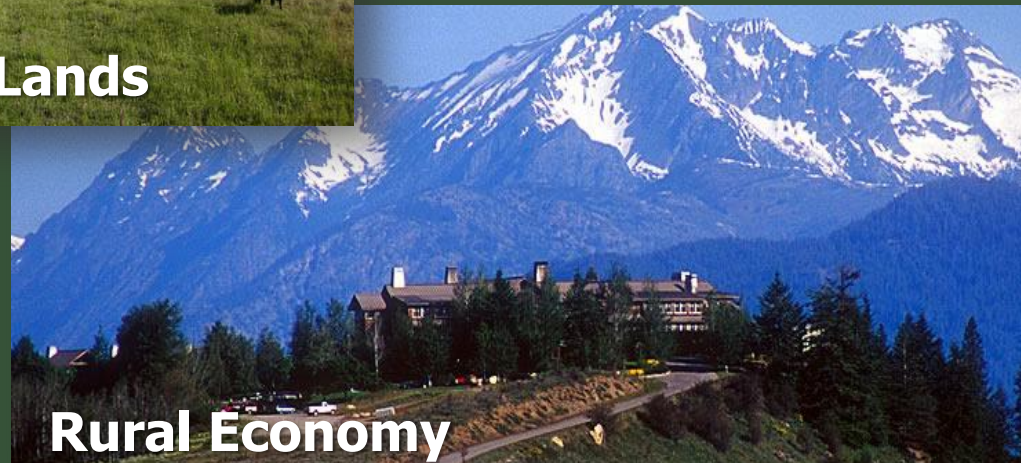
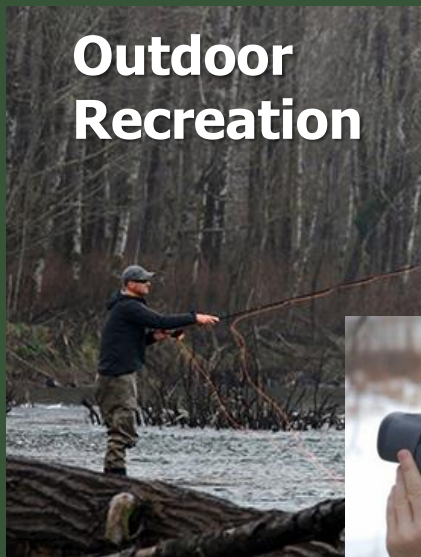


- WA State Recreation and Conservation Office (RCO)
  - ▣ Washington Wildlife and Recreation Program (WWRP)
  - ▣ Boating Facilities Program (BFP)
  - ▣ Salmon Recovery Funding Board (SRFB)



- USFWS
  - ▣ Cooperative Endangered Species Conservation Fund "Sec. 6"
  - ▣ National Coastal Wetlands Conservation Program
  - ▣ Pittman-Robertson Act (PR)

# Strengthen common, shared values



# Acquisition Steps

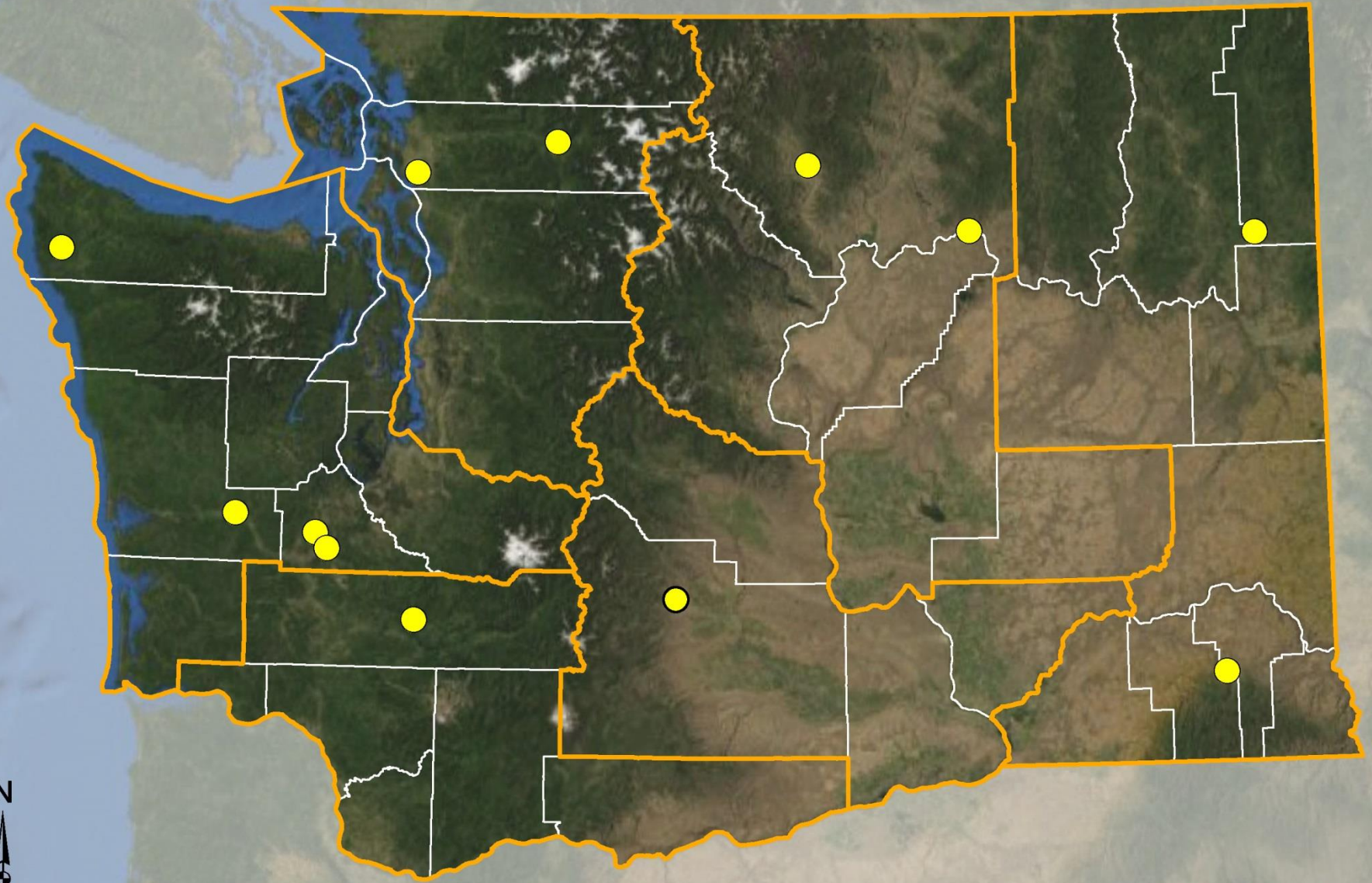
Scoping  
and Need

Lands 20/20  
and  
Funding

Land Transaction

Integrating  
Ownership

# WDFW Land Acquisition Proposals



● Projects Proposed in 2017

\* Funding to be proposed in 2017 - 2018

0 10 20 30 40 Miles



# 2017 Projects Reviewed

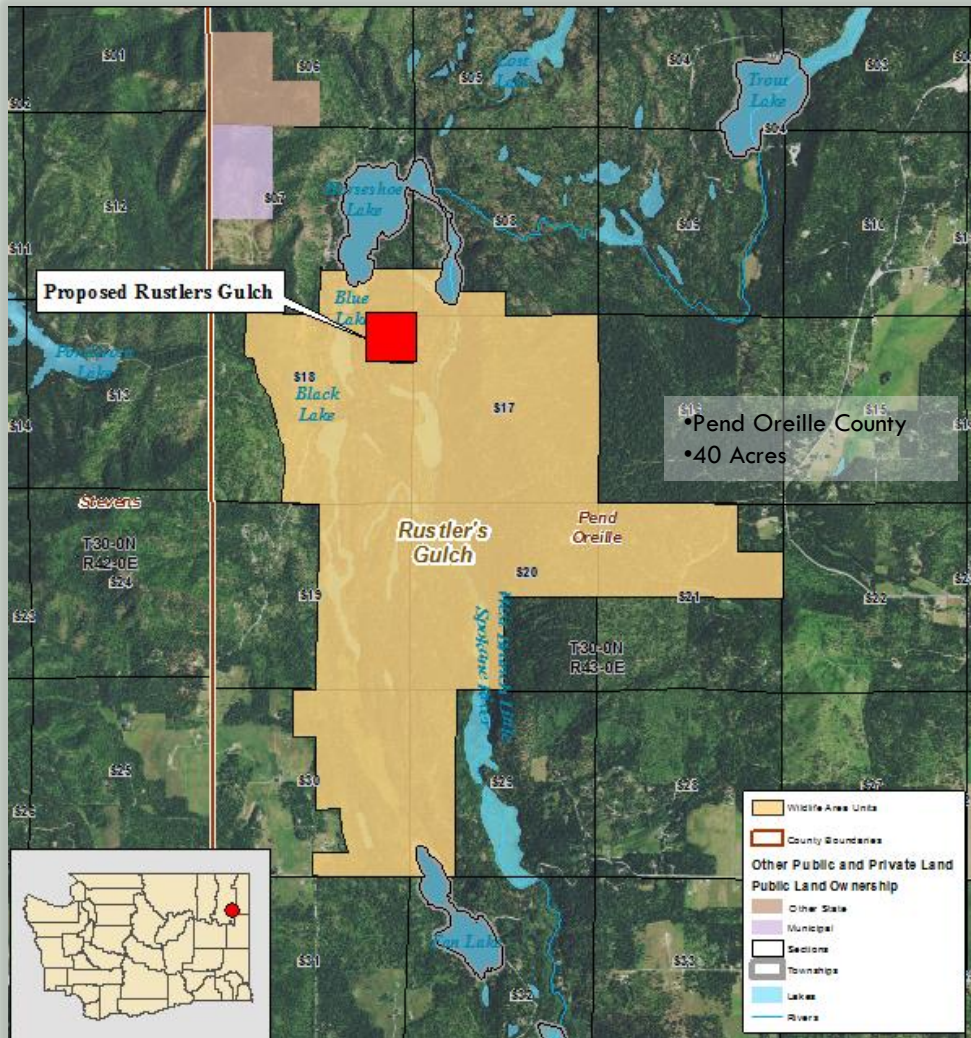
8

	Project	Acres	County
<b>Region 1</b>			
	Rustlers Gulch/DNR	40	Pend Oreille
	Goat Mountain Road	43.29	Columbia
<b>Region 2</b>			
	Mid-Columbia/DNR	1200	Douglas
	Methow Pass-Through	1028	Okanogan
<b>Region 3</b>			
	Cowiche Watershed 2017		Yakima
<b>Region 4</b>			
	North Fork Skagit Levee Setback - Fir Island	21.72	Skagit
	Rockport State Park Surplus Property	204	Skagit
<b>Region 5</b>			
	Tilton State Park Property	102	Lewis
<b>Region 6</b>			
	Wentworth Lake	1.5	Clallam
	Oregon Spotted Frog Pass-Through	103.5	Thurston
	South Sound Prairie Ph. 2	1700	Thurston
	Chehalis Wildlife Area Floodplain	1178	Grays Harbor



# Region 1 – Rustlers Gulch/DNR

9

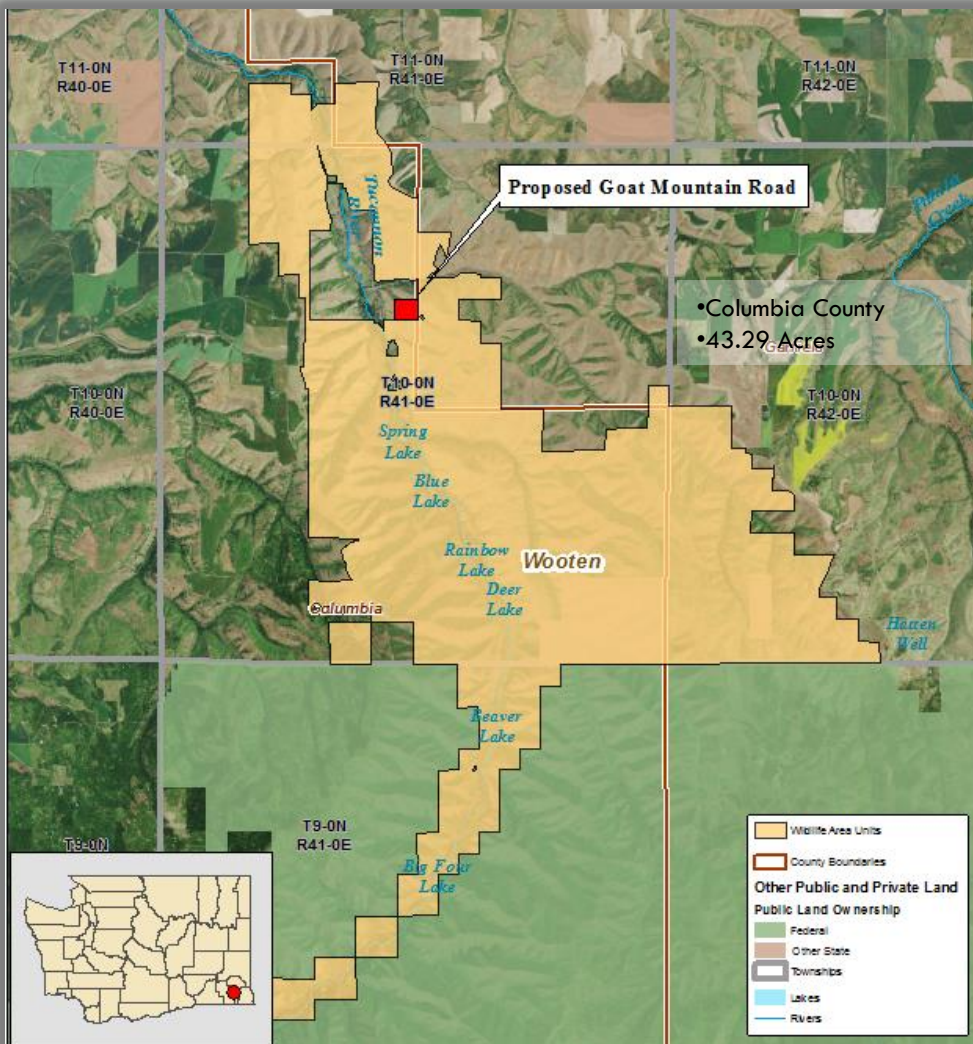


- Rustlers Gulch WLA Unit Inholding
- Travel corridor and winter range for white-tailed deer and moose
- DNR owned

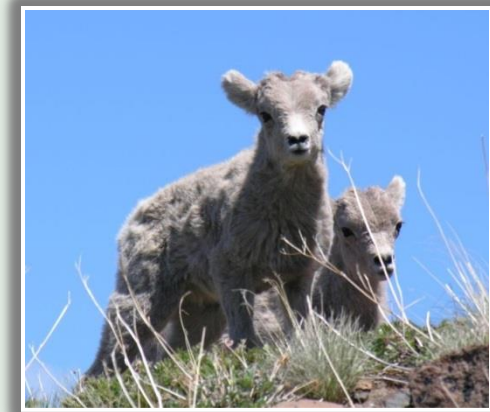


# Region 1 – Goat Mountain Road

10

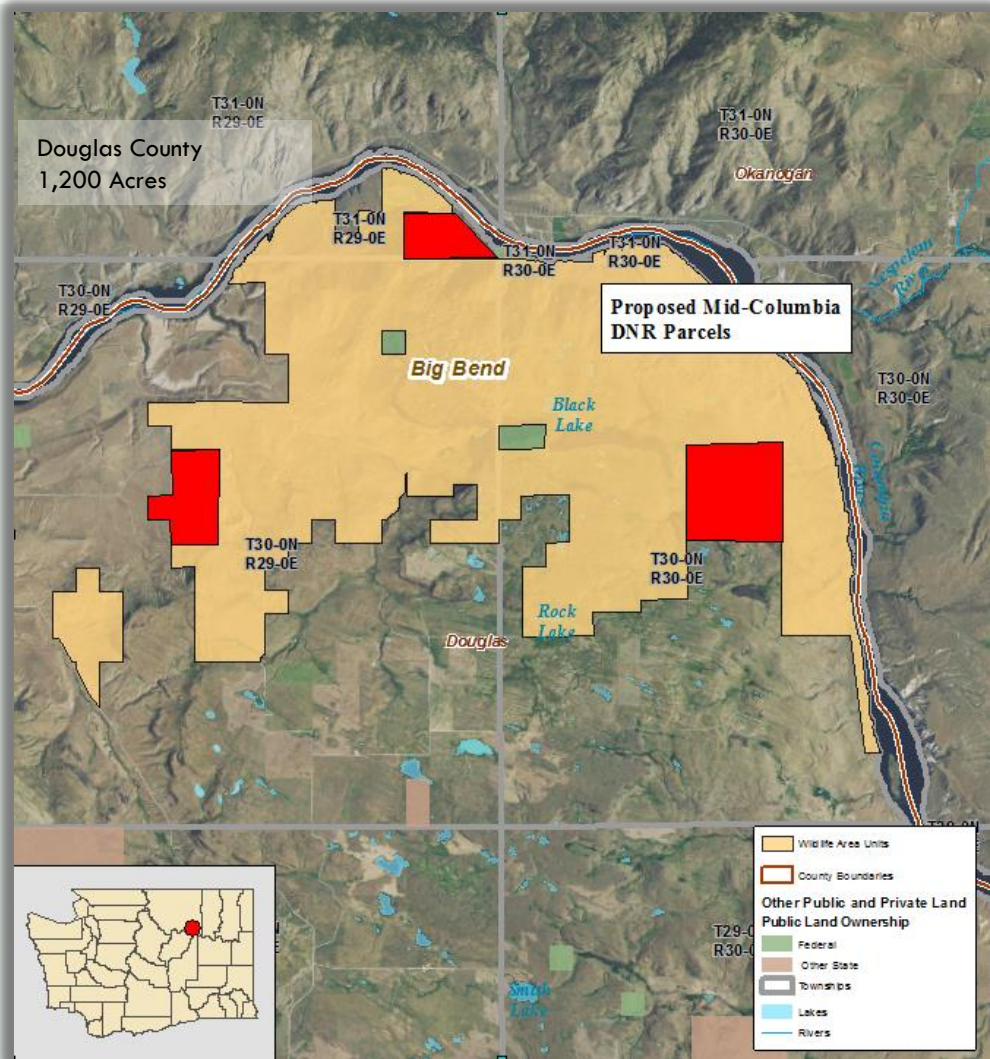


- Edge holding to Wooten WLA
- Recreation/hunting
- Benefits mule deer, Big Horn Sheep and golden eagles



# Region 2 – Mid-Columbia/DNR

11

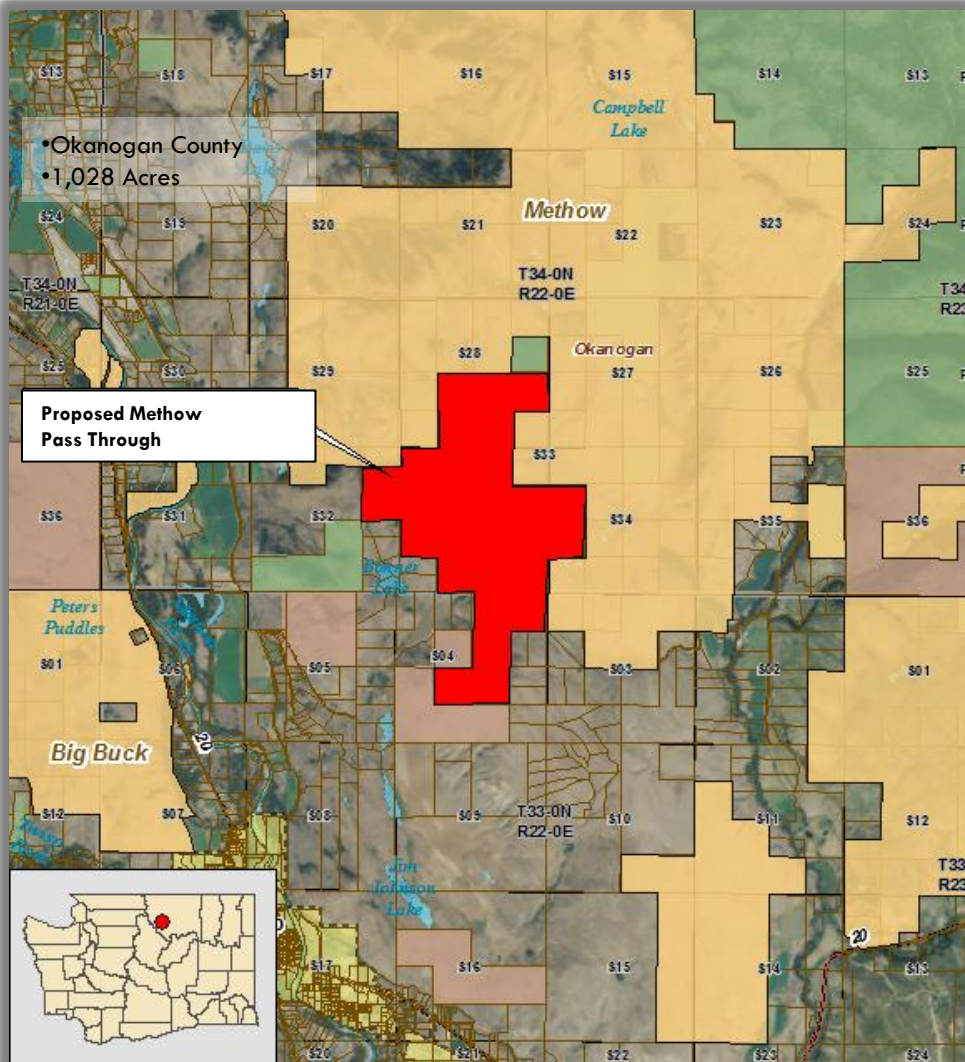


- Three parcel inholdings to Big Bend WLA
- Maintain and recover sharp-tailed grouse
- DNR owned



# Region 2 – Methow Pass-through

12

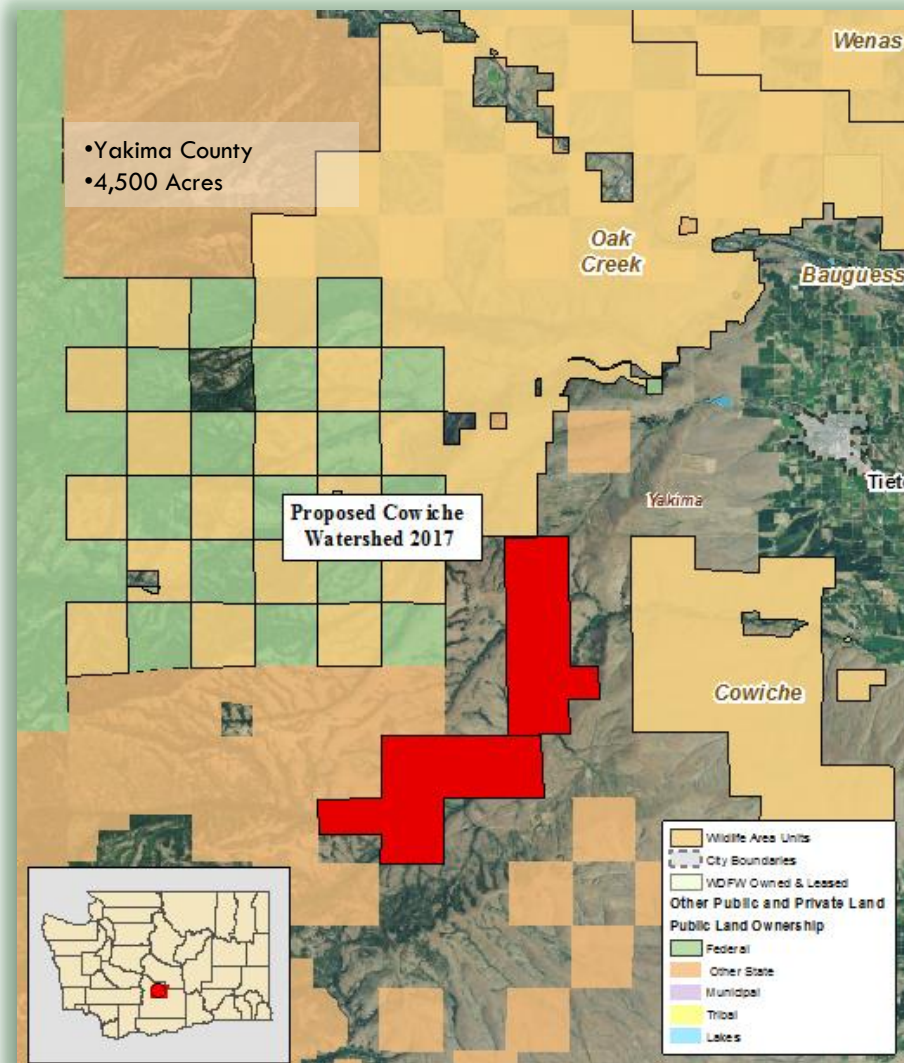


- Pass through Federal Funding- Conservation Easement
- Critical Shrub Steppe



# Region 3 – Cowiche Watershed 2017

13

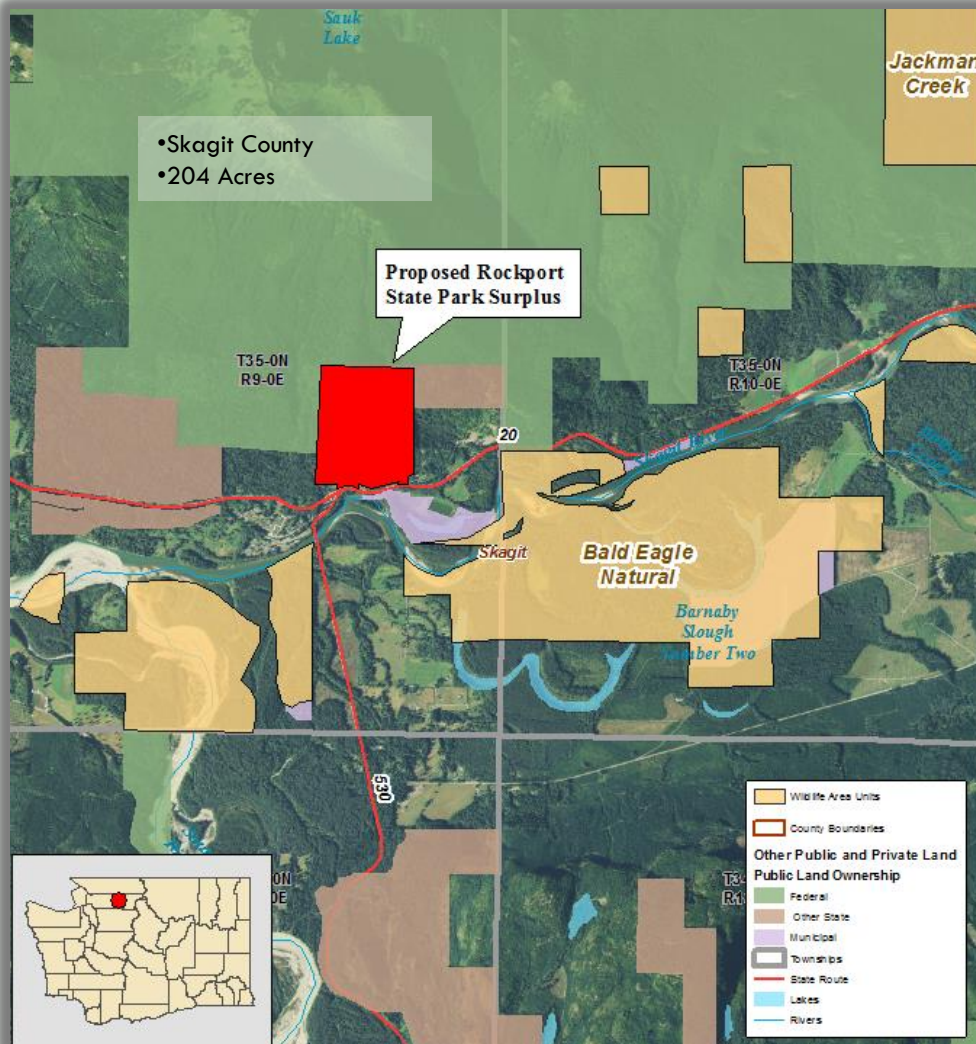


- Critical Shrub Steppe
- Oak Woodland
- Mid-Columbia Steelhead
- Bull Trout



# Region 4 – Rockport State Park

14

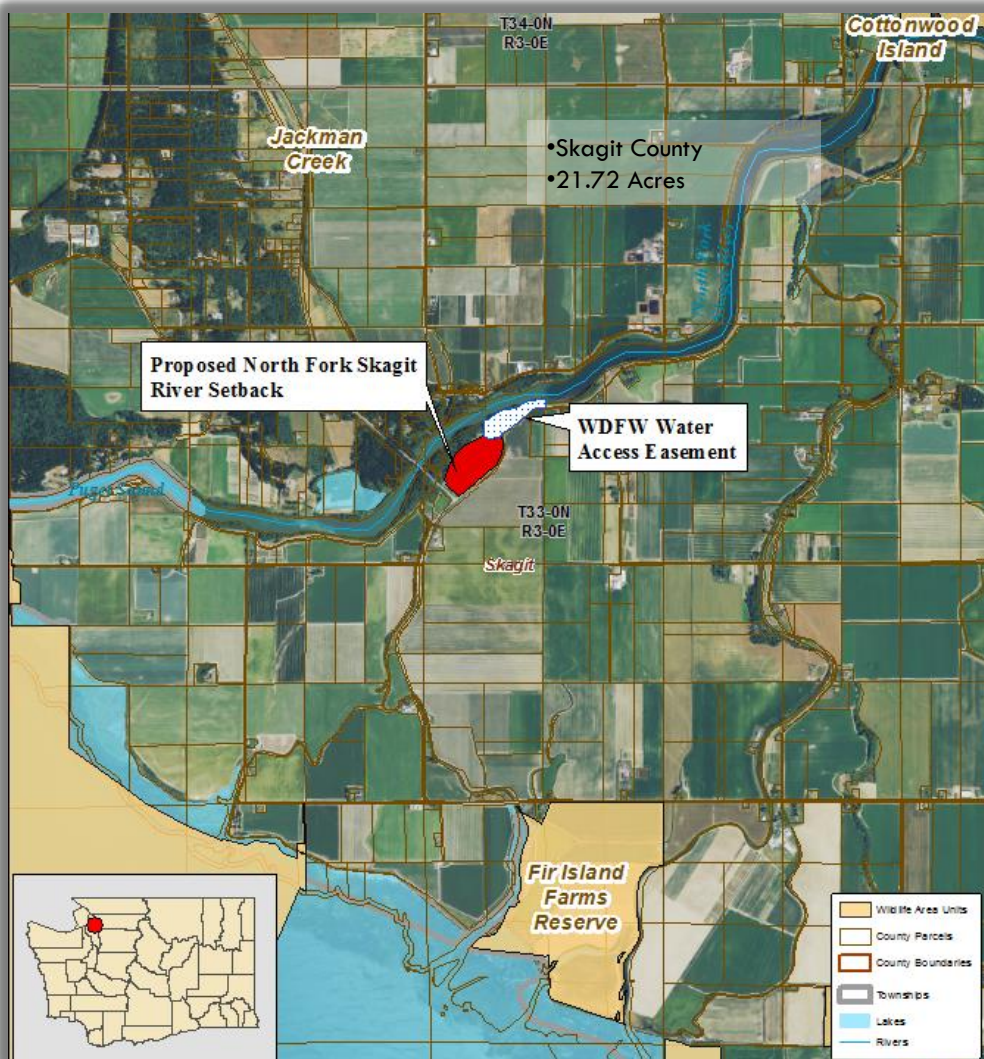


- Donation
- Preserve Old Growth Forest
- Marbled Murrelet habitat
- Movement corridor for elk



# Region 4 – North Fork Levee Setback

15

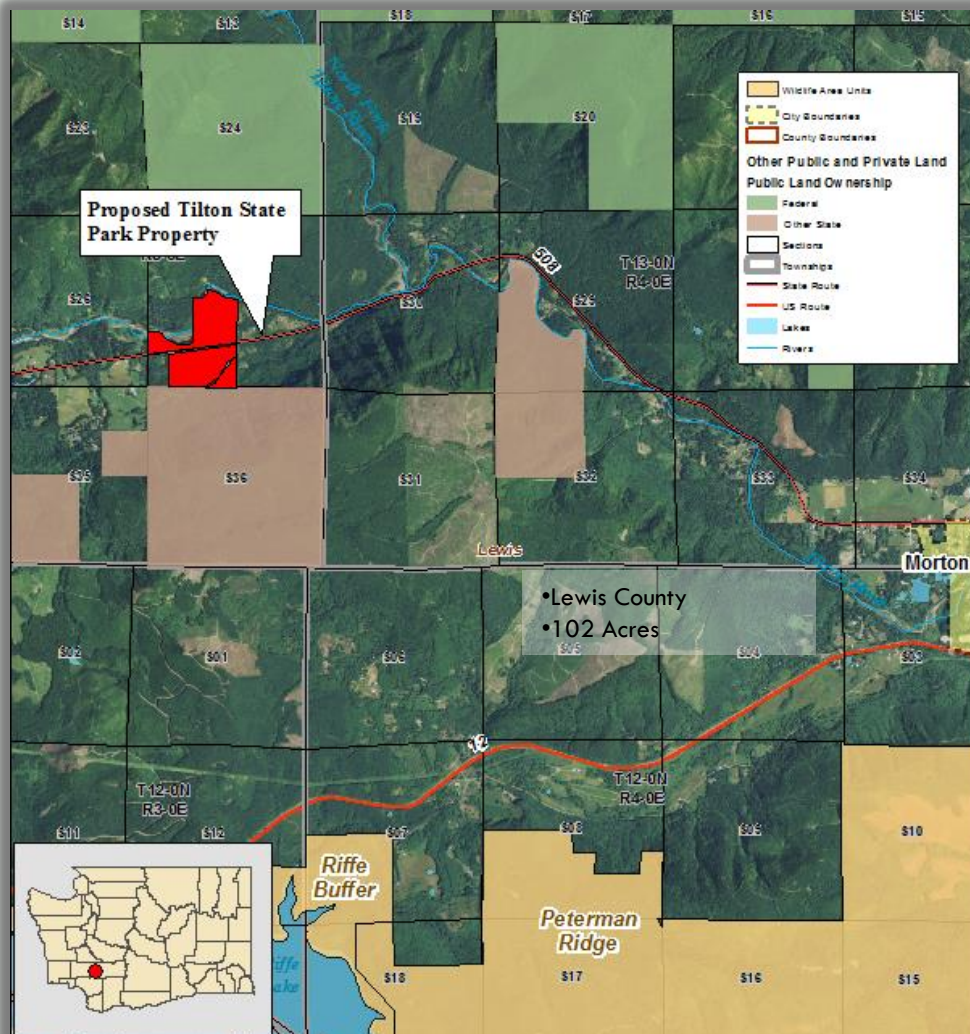


- Future restoration of Salmon habitat
- River access
- Partnership with Skagit County



# Region 5 – Tilton State Park

16



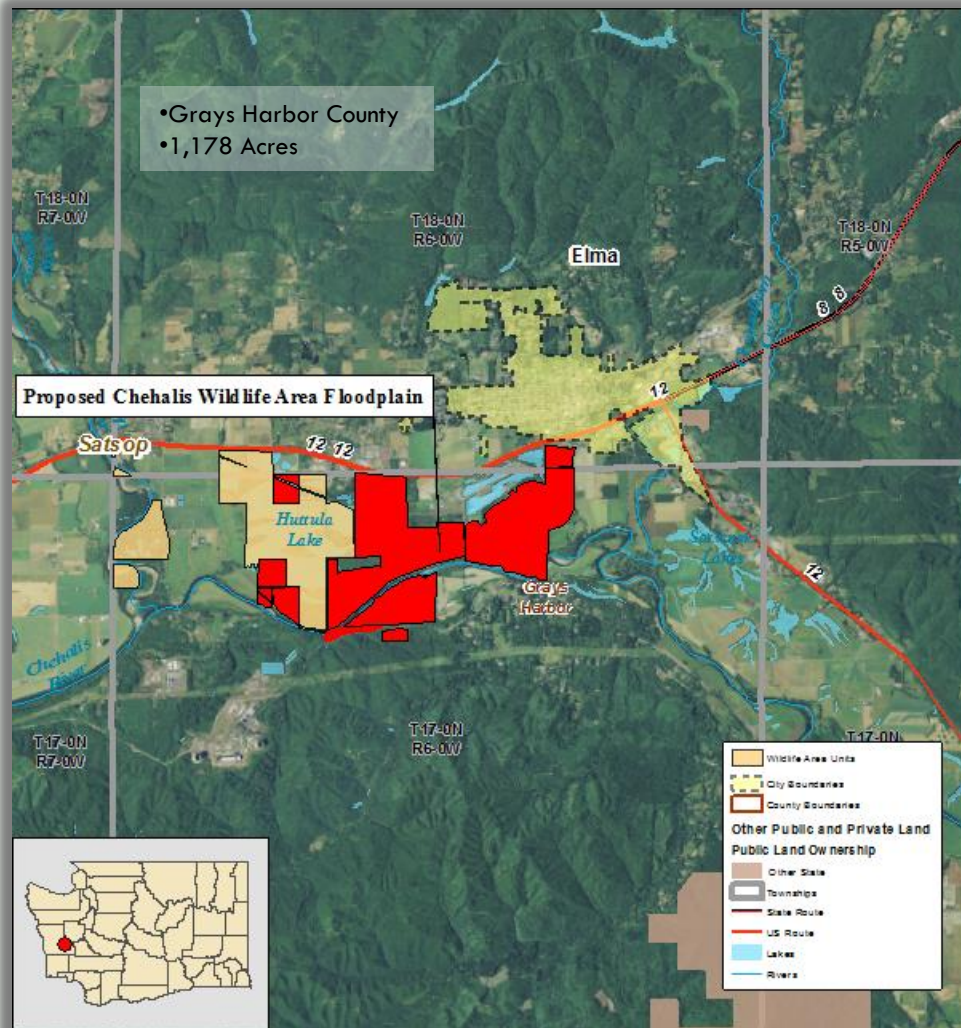
- Donation
- Release site for Salmon and Steelhead
- Fishing Access





# Region 6 – Chehalis WLA Floodplain

17

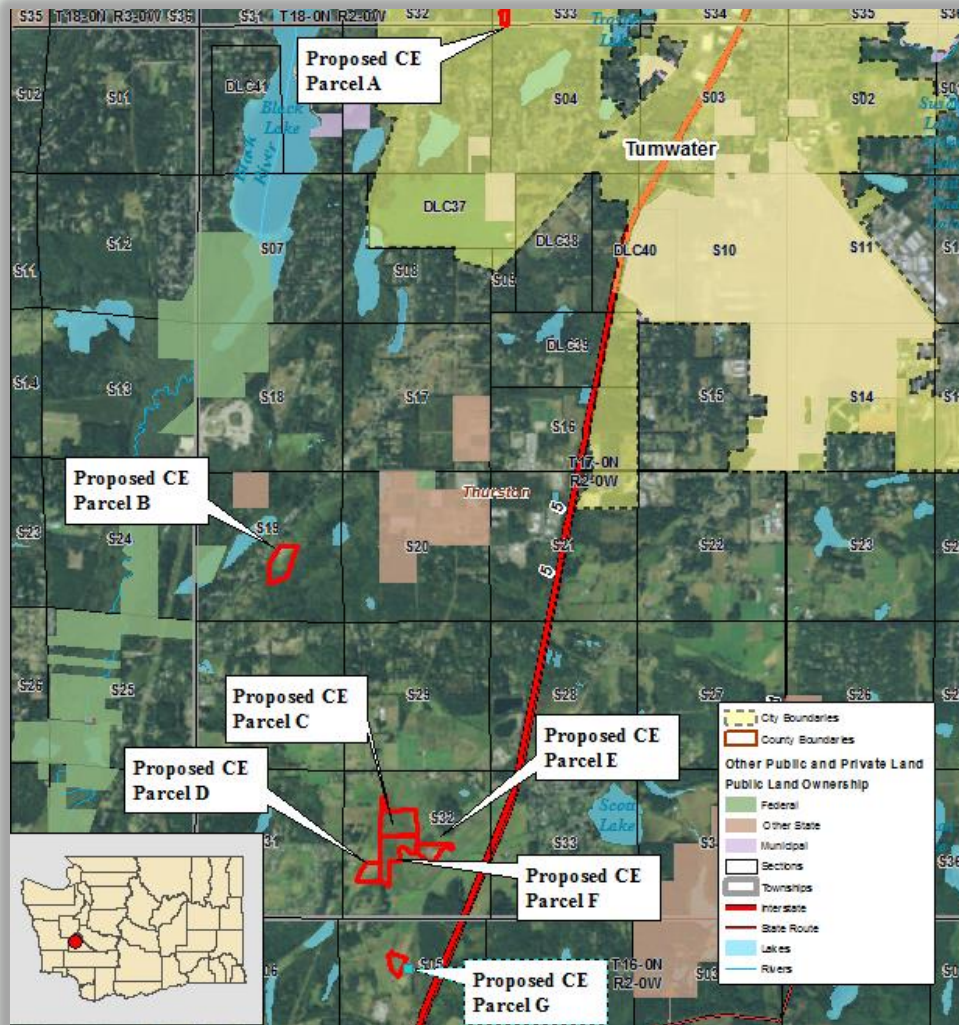


- Incorporate floodplain habitat into adjacent Chehalis WLA
- Restore Salmon populations
- Phased project



# Region 6 – Oregon Spotted Frogs

18

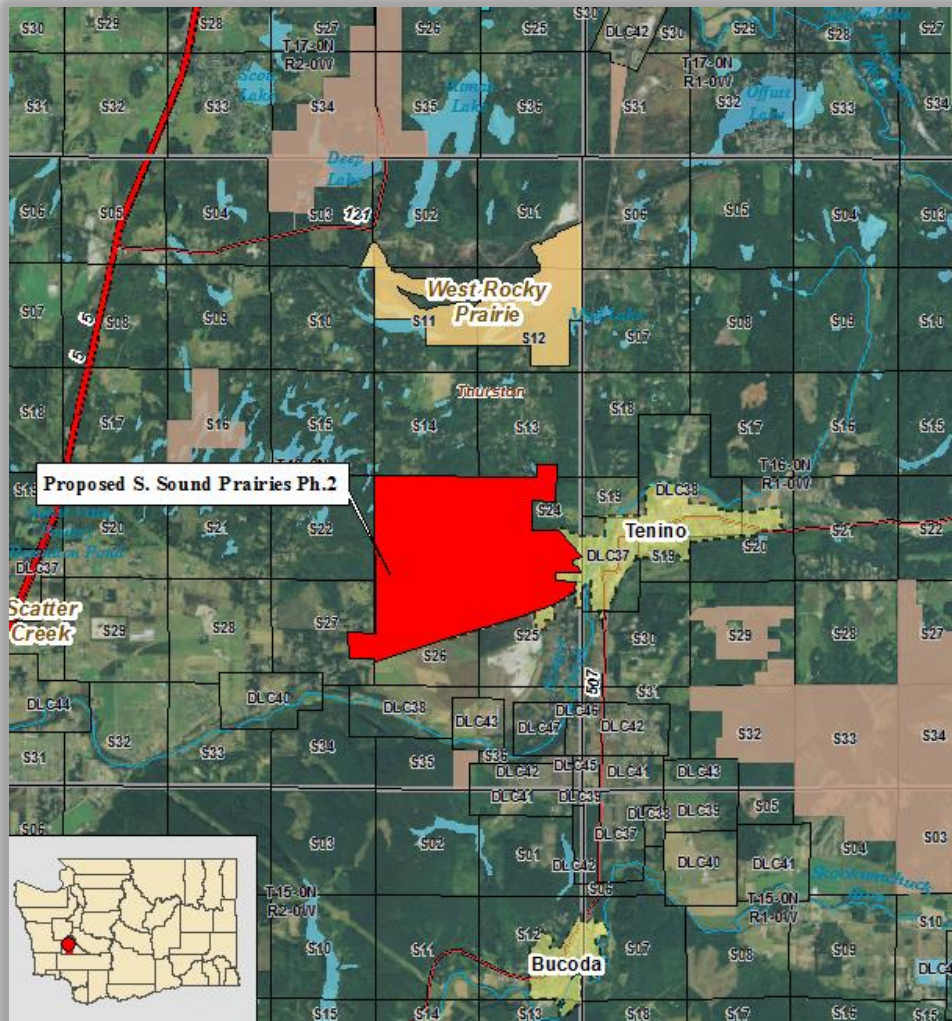


- Pass through Federal Funding – Conservation Easements
- Oregon Spotted Frog habitat



# Region 6 – South Sound Prairies Ph. 2

19

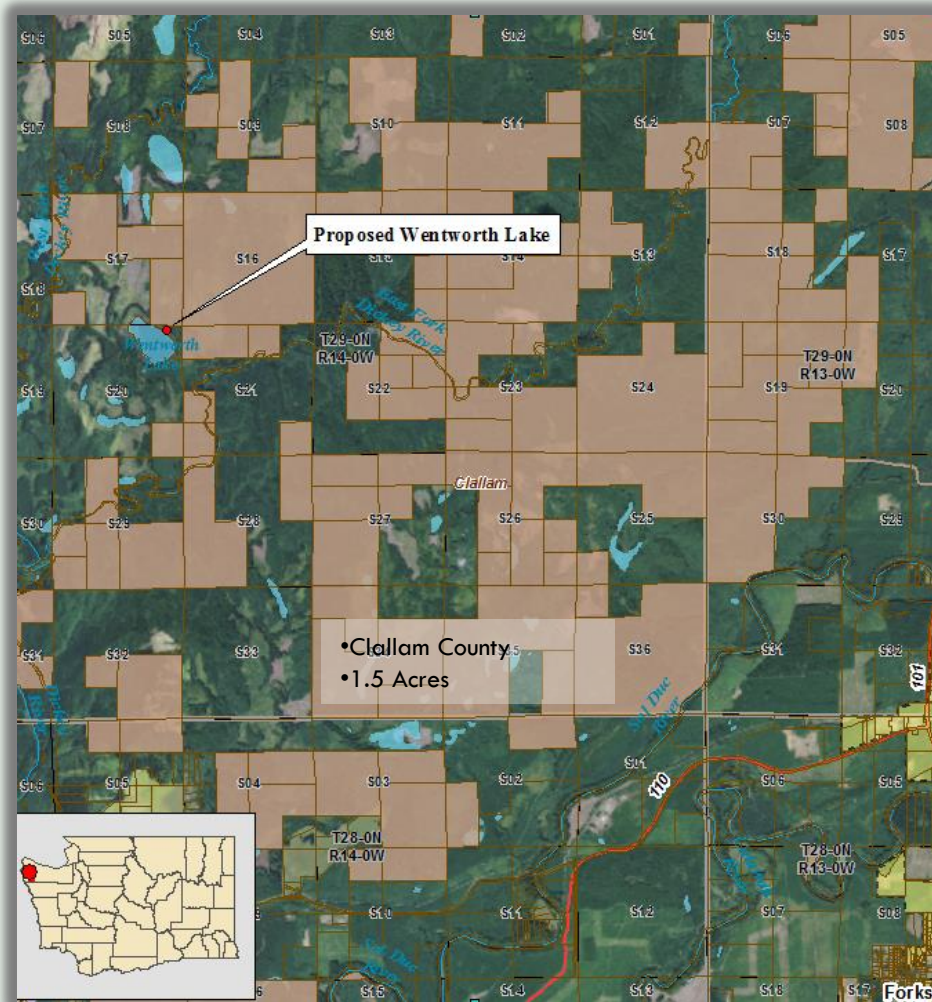


- Wildlife Viewing
- Prairie Species Restoration (Taylor's checkerspot and Mardon skipper butterflies, Oregon vesper sparrow, Mazama pocket gopher)

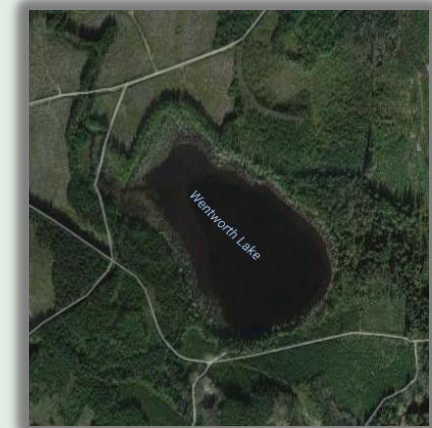


# Region 6 – Wentworth Lake

20



- Donation from private owner
- Restore public fishing on Wentworth Lake
- Resume stocking



# Public Comment Highlights

21

- Reasons for support

- wildlife corridors
- hunting
- access
- Public fishing at Wentworth Lake
- Protect wildlife corridor/retain private ownership in Methow
- hiking
- birding

# Public Comment Highlights

22

- Concerns
  - Funding sources not clear
  - Cost of transfers from State Parks
  - Access impacts to adjacent landowners

# Lands 20/20 Process - Next Steps

23

- Director Approval
- Apply for funding
- Funds received
- Finalize acquisitions



A scenic view of a river flowing through a forest. The river is in the foreground, with several large rocks visible in the water. The forest is dense and lush, with many trees showing vibrant autumn colors in shades of orange, yellow, and green. The background shows a steep, forested hillside under a clear blue sky.

**QUESTIONS ?**