

Monitoring and Recovery Status of Endangered Species Act (ESA)-Listed Salmon and Steelhead

**Erik Neatherlin, Science Division Manager
Fish and Wildlife Commission Meeting
September 8, 2017**

Overview

- Salmon Recovery in Washington State
- Summarize Monitoring Methods
- Case Studies and Summary of Progress

Salmon Recovery in Washington State



- NOAA
 - Federal Endangered Species Act
- Salmon Recovery Act
 - Regional Recovery Boards
 - Lead Entity Watersheds
- WDFW and Tribal Co-managers

15 ESA Listed Salmon and Steelhead ESUs (Evolutionary Significant Unit)

Puget Sound

- Chinook
- Steelhead

Hood Canal

- Summer Chum

Washington Coast

- Lake Ozette Sockeye

Lower Columbia

- Spring Chinook
- Fall Chinook
- Steelhead
- Coho
- Chum

Middle Columbia

- Steelhead

Upper Columbia

- Spring Chinook
- Steelhead

Snake River

- Fall Chinook
- Spring/Summer Chinook
- Steelhead



NOAA Population Status

- **Viability Salmon Parameters (VSP)**
 - Abundance
 - Productivity
 - Spatial Distribution
 - Diversity



Adult Abundance Methods

Redd surveys



Weirs

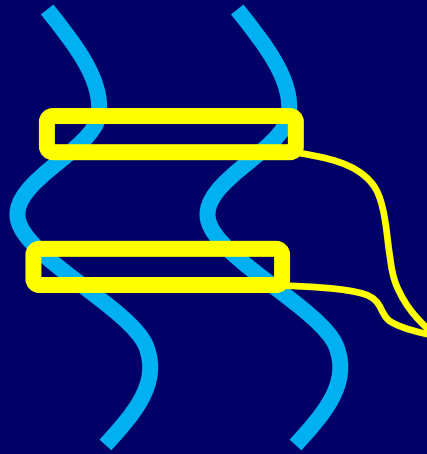


Mark Recapture

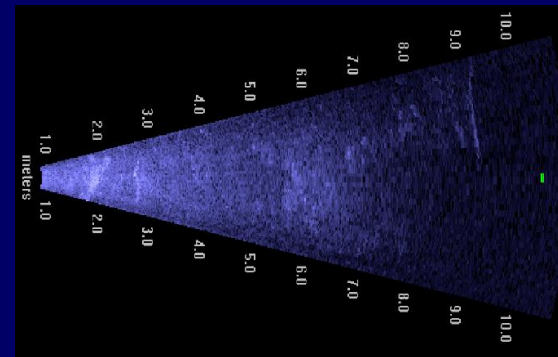


Adult Abundance Methods

PIT tag



SONAR



SONAR Images:
Keith Denton

Juvenile Abundance Methods

Screw traps



Inclined plane traps



Fence weirs

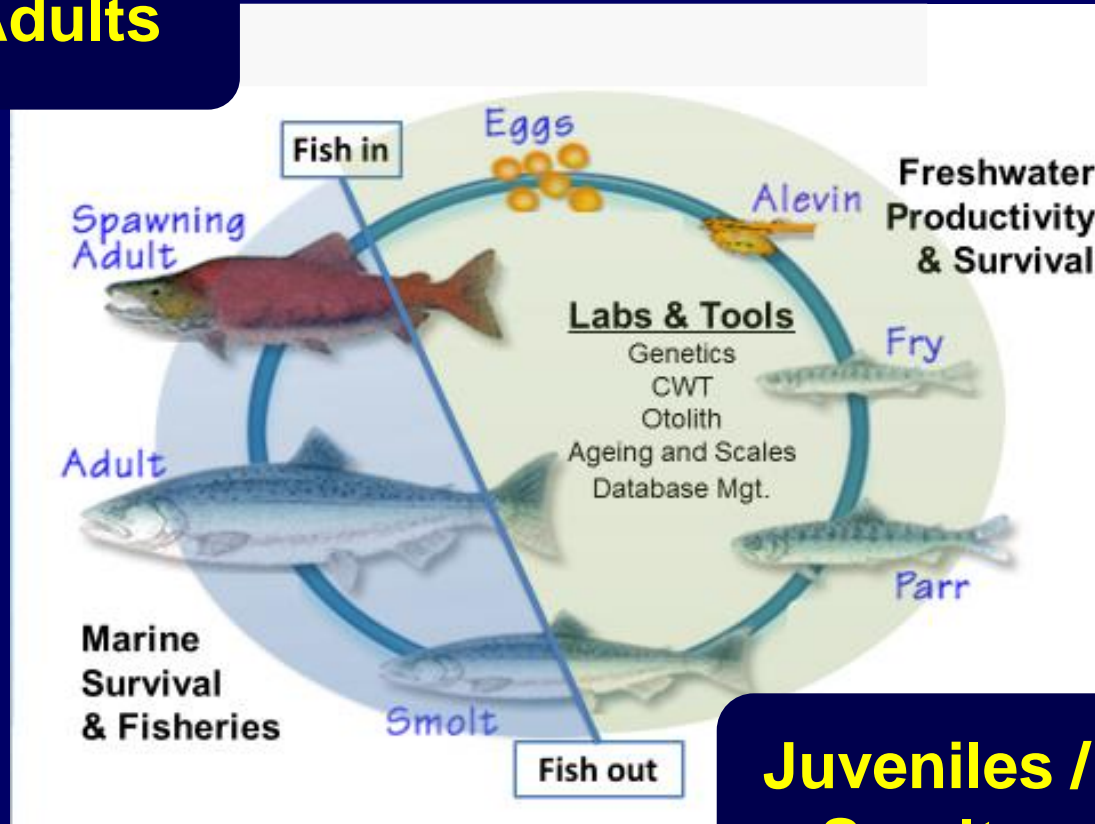


Fixed weirs



Abundance and Productivity

Adults



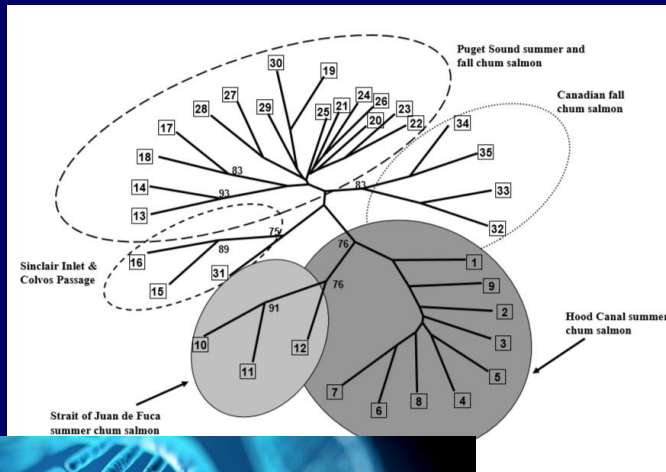
Juveniles / Smolts

Spatial Distribution



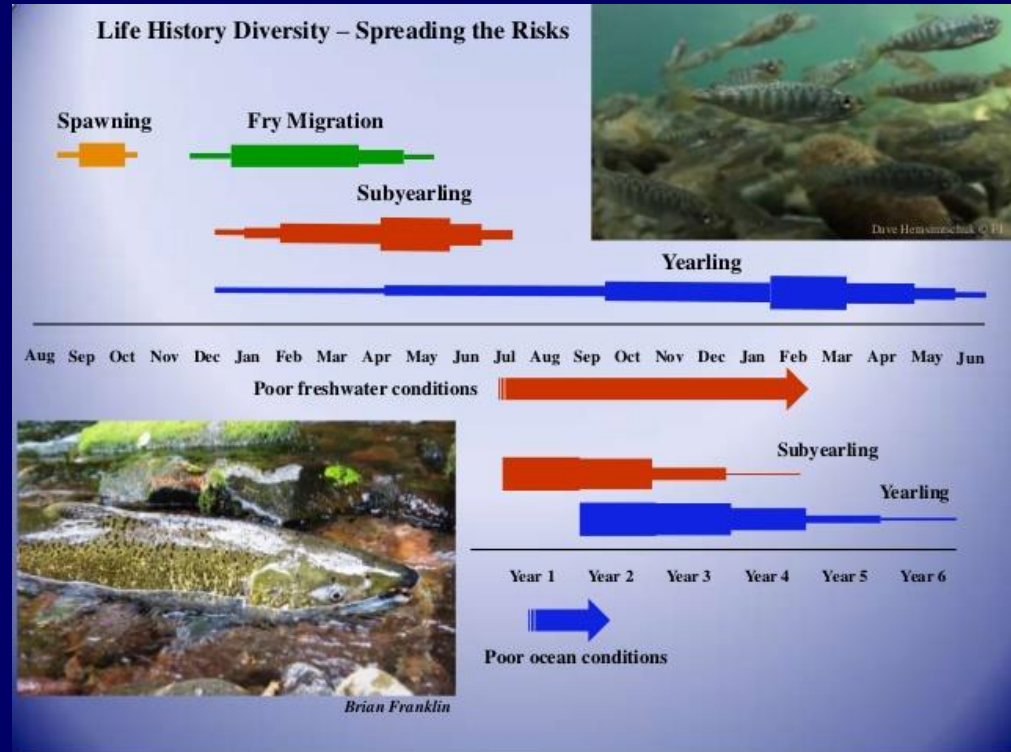
Diversity

Genetic Diversity



Life History Diversity

Run timing, age structure, size, etc.

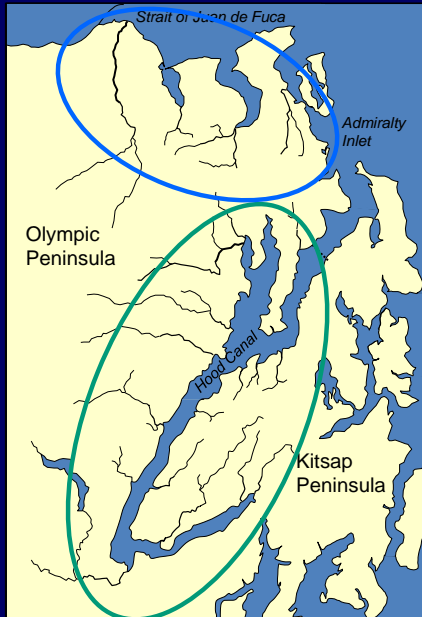




Case Studies

- Hood Canal Summer Chum
- Puget Sound Chinook

Hood Canal Summer Chum



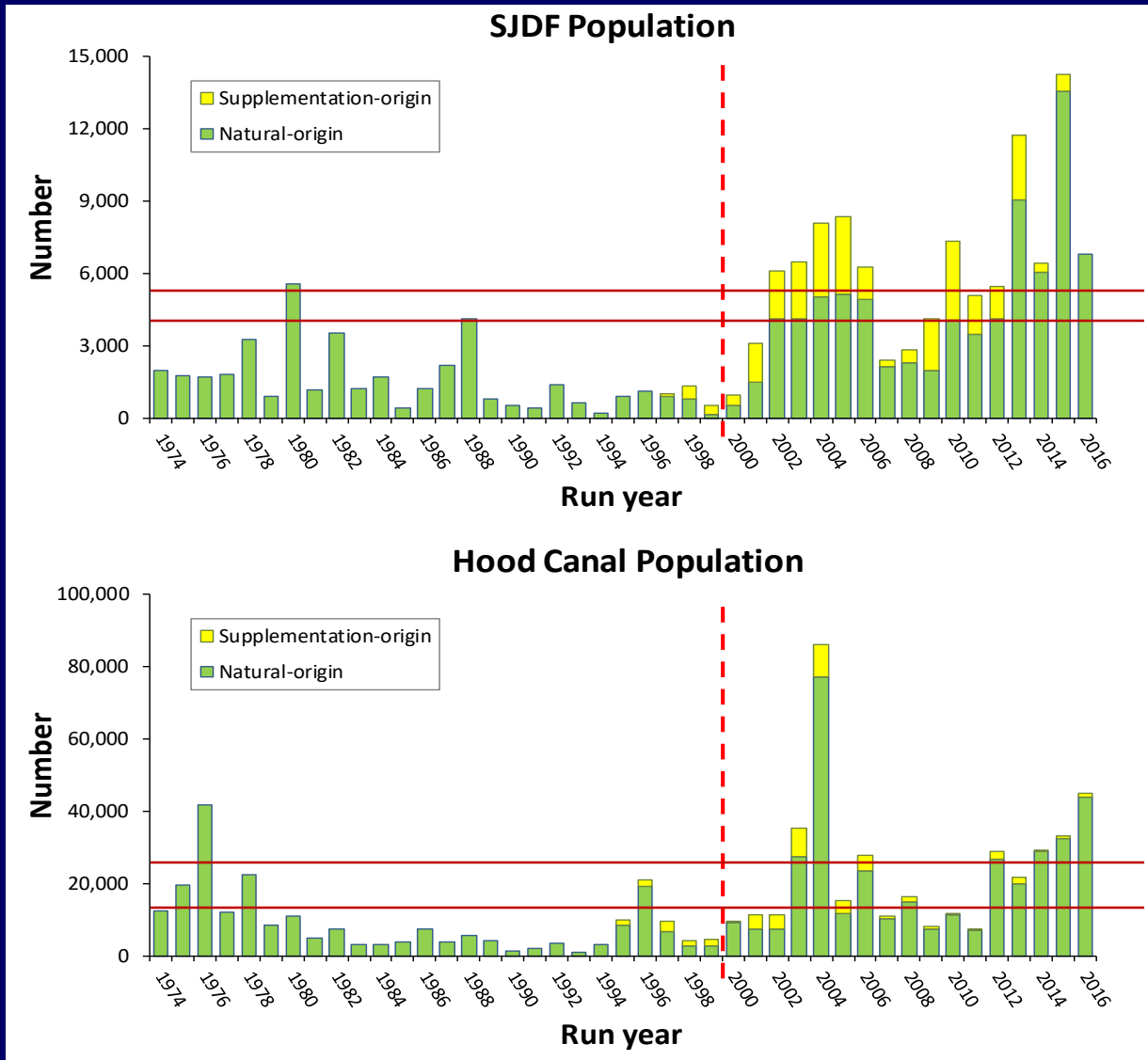
- Hood Canal Coordinating Council
- ESA listed 1999
- 2 populations
 - Strait of Juan de Fuca
 - Hood Canal
- Key NOAA Listing Factors
 - Overutilization (harvest)
 - Habitat degradation and stream flow



Hood Canal Recovery Actions

- Population reintroductions & hatchery supplementation
- Reduced harvest
 - Eliminated directed fisheries, significantly curtailed incidental harvest
- Implemented freshwater and estuarine habitat restoration

Adult Abundance



Hood Canal Summer Chum

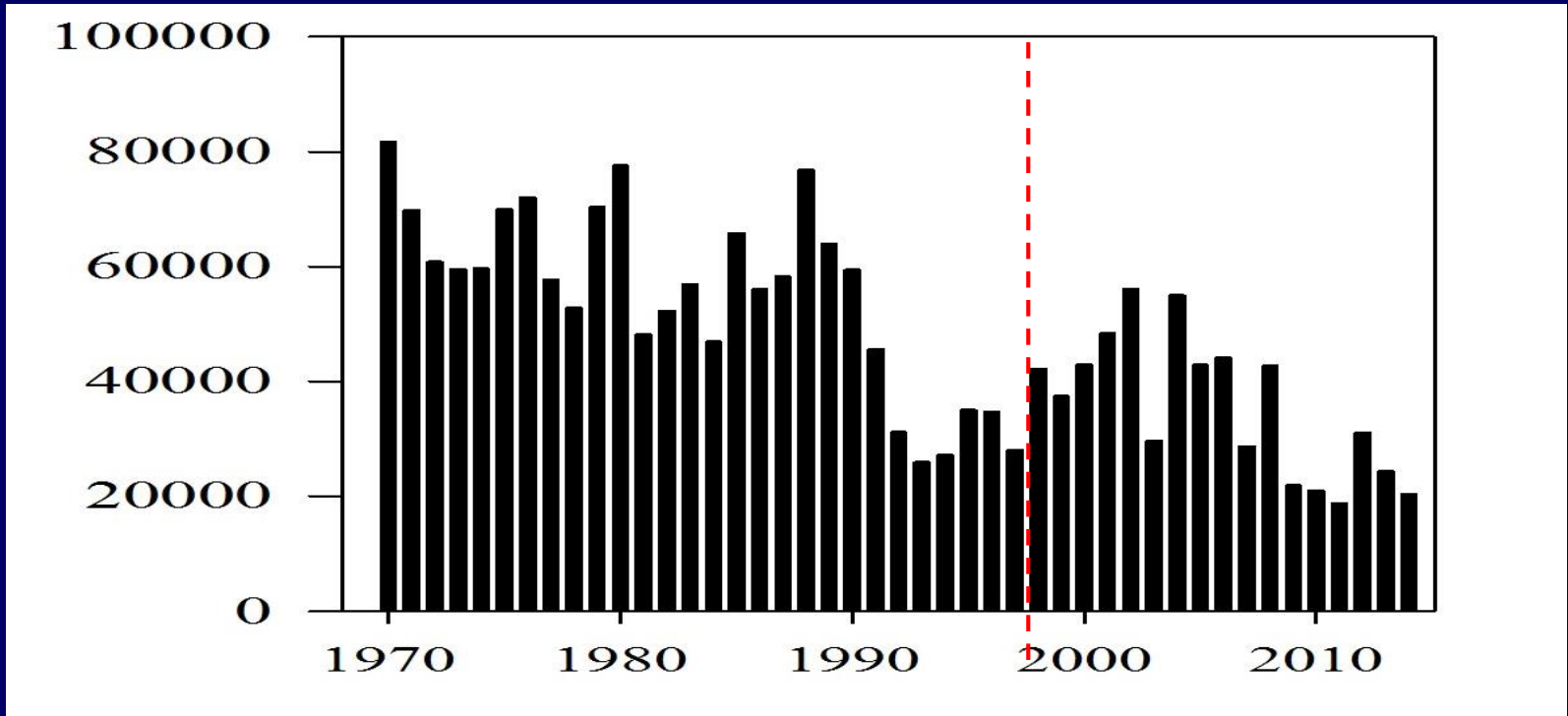
- **On road to recovery**
- **Conversations with NOAA (de-listing)**
- **Large-scale habitat restoration projects**
- **Resiliency to changing climate and ocean conditions**

Puget Sound Chinook

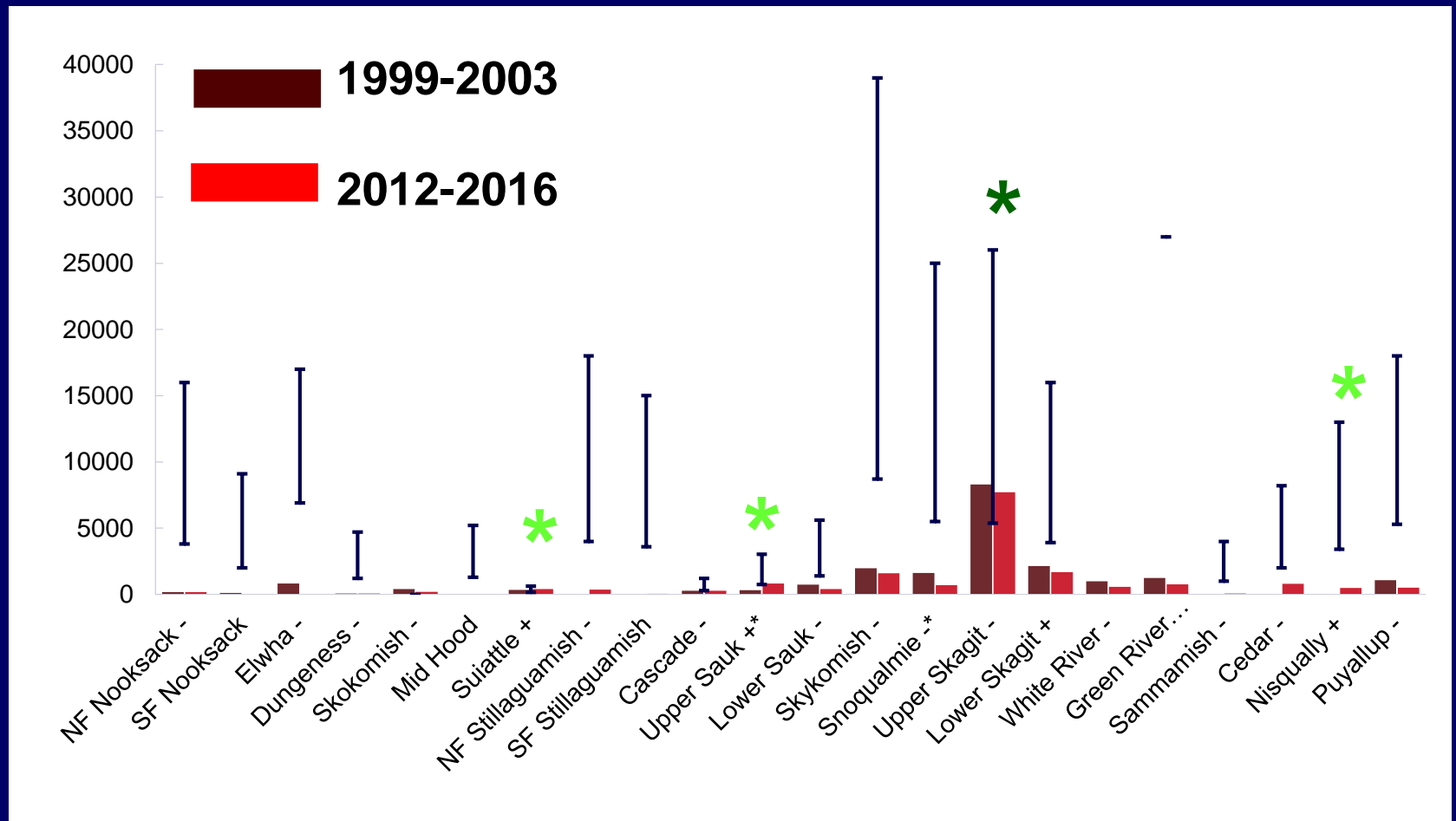


- Puget Sound Partnership
- ESA listed 1998
- 22 populations
- Key NOAA Listing Factors
 - Freshwater habitat
 - Nearshore and estuary habitat
 - Toxics and contaminants
 - Overutilization (harvest)
 - Disease or predation
 - Hatcheries
 - Inadequacy of existing regulatory mechanisms

Long Term Abundance Trends



Abundance Since ESA Listing



Puget Sound Chinook Populations

Progress and Challenges

- Progress
 - Harvest
 - Hatcheries
 - Regulatory mechanisms
- Continued Challenges
 - Freshwater (esp. rearing habitat)
 - Nearshore and estuary habitat
 - Puget Sound health (early marine survival)
 - Changing climate and ocean conditions



Statewide Status Summary

BELOW GOAL (ENDANGERED SPECIES ACT-LISTED SALMON IN WASHINGTON)			NEAR GOAL
<i>Getting Worse</i>	<i>Not Making Progress</i>	<i>Showing Signs of Progress</i>	<i>Approaching Goal</i>
Puget Sound Chinook	Upper Columbia River steelhead	Middle Columbia River steelhead	Hood Canal summer chum
Puget Sound steelhead*	Lower Columbia River chum	Lake Ozette sockeye	Snake River fall Chinook
Upper Columbia River spring Chinook	Lower Columbia River fall Chinook	Lower Columbia River coho	
	Lower Columbia River spring Chinook	Lower Columbia River steelhead	
		Snake River spring and summer Chinook	
		Snake River steelhead	

* Abundance Summary Excerpted from 2016 State of Salmon Report (WDFW Data)



Concluding Remarks

- Washington is model of success
 - Local partnerships, local support, and on the ground success
- Stay the course, maintain investments
 - Leverage decades of investments
- Need a success story
 - ESA de-listing
- Extinction is not an option
 - Recovery, ecosystem health, and sustainable fisheries intricately linked

Thank you