

Land Transactions



Washington Department of
FISH and WILDLIFE

Julie Sandberg
Real Estate Services Manager, Lands Division
Wildlife Program

Acquisition Steps

Scoping and
Need

Lands 20/20
and
Funding

Land Transaction

Integrating
Ownership

Acquisition Steps

Scoping and
Need

Lands 20/20
and
Funding

Land Transaction

Integrating
Ownership

Land Transaction

Stages

- Letter of intent
- Appraisal/review
- Negotiations
- Purchase option
- Fish and Wildlife Commission approval
- Close

Land Transaction

Appraisal

- Appraisal required by RCW 8.26.180
- Appraisal standards
- Independent fee appraisers
- Appraisal review

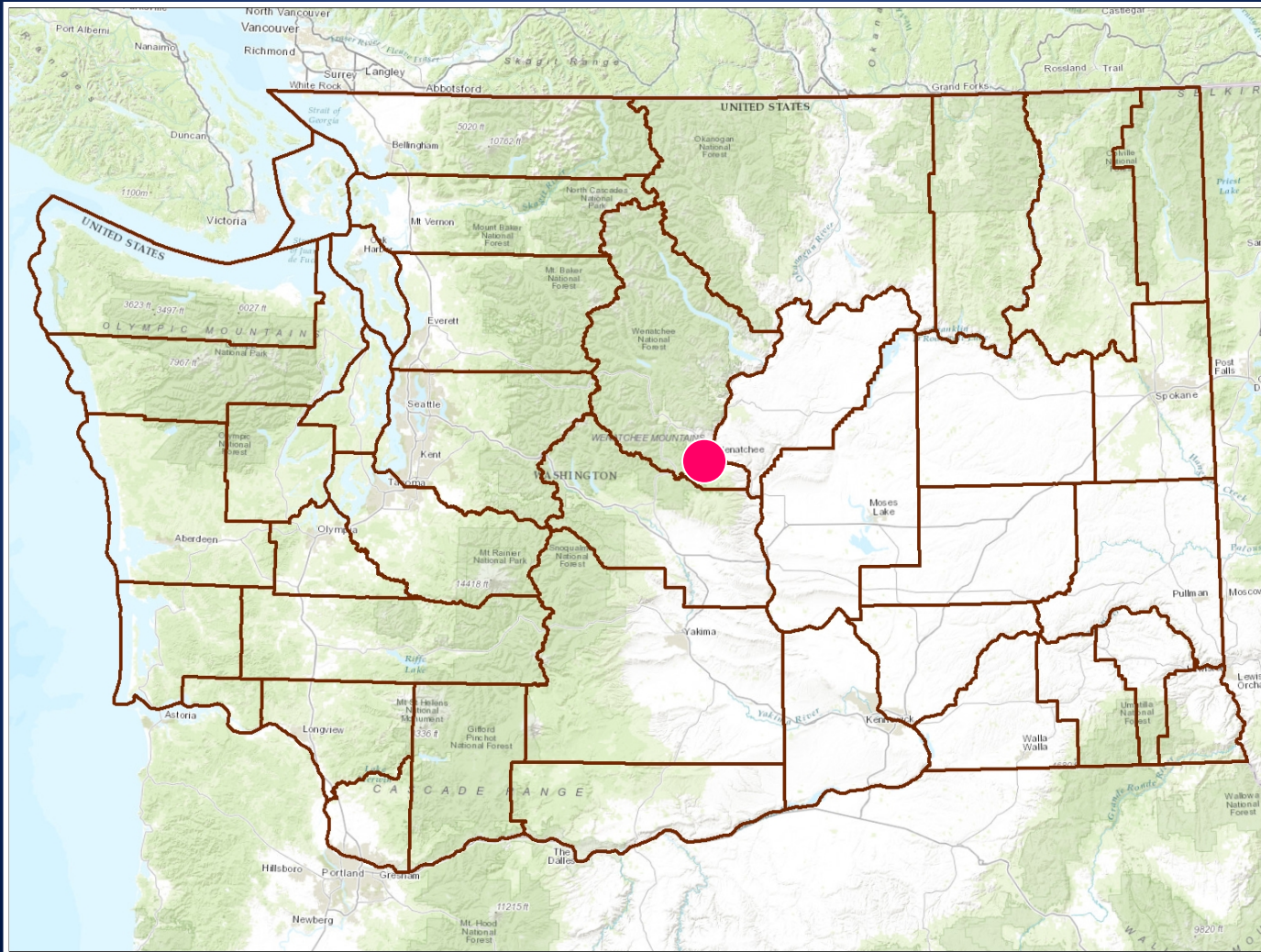
Land Transaction

Stages

- Letter of intent
- Appraisal/review
- Negotiations
- Purchase/option agreement
- Fish and Wildlife Commission approval
- Close

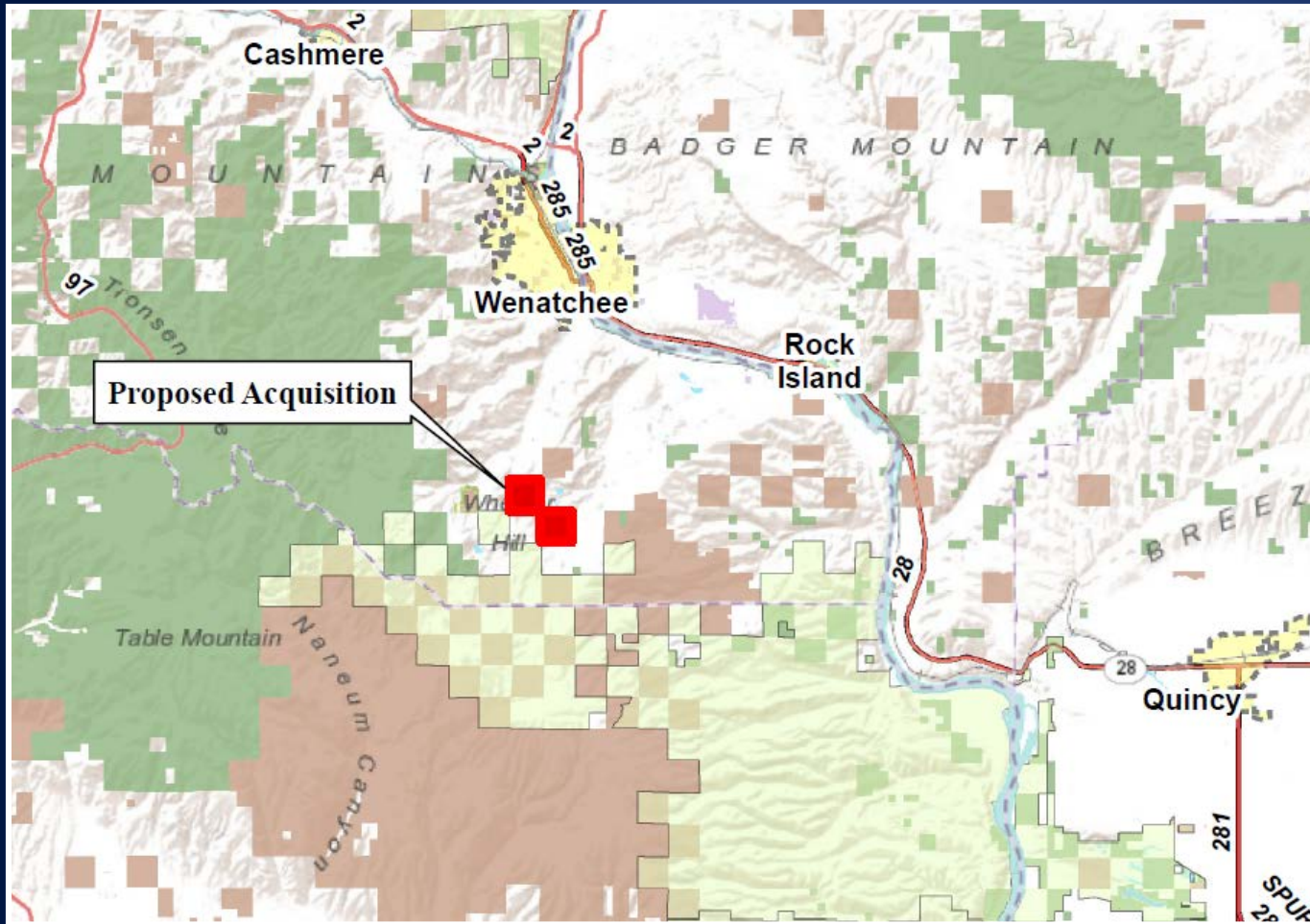
Stemilt Property

Chelan County



Stemilt Property

Chelan County

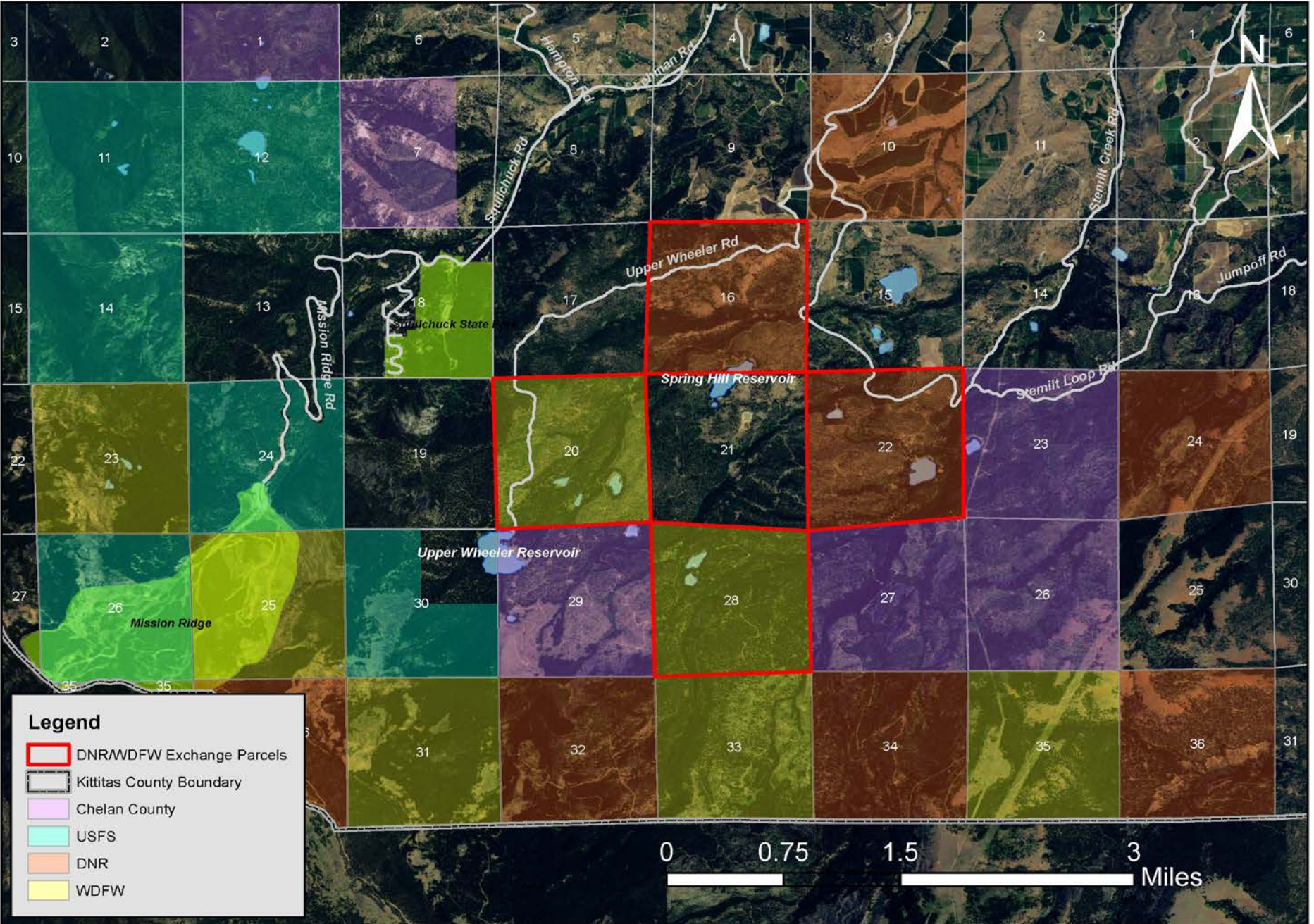


1276 +/- acres

Appraised Value
\$1,778,000

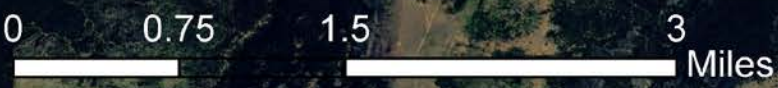


Stemilt Partnership Land Acquisition Initiative



Legend

- DNR/WDFW Exchange Parcels
- Kittitas County Boundary
- Chelan County
- USFS
- DNR
- WDFW



Data credits: Chelan County GIS

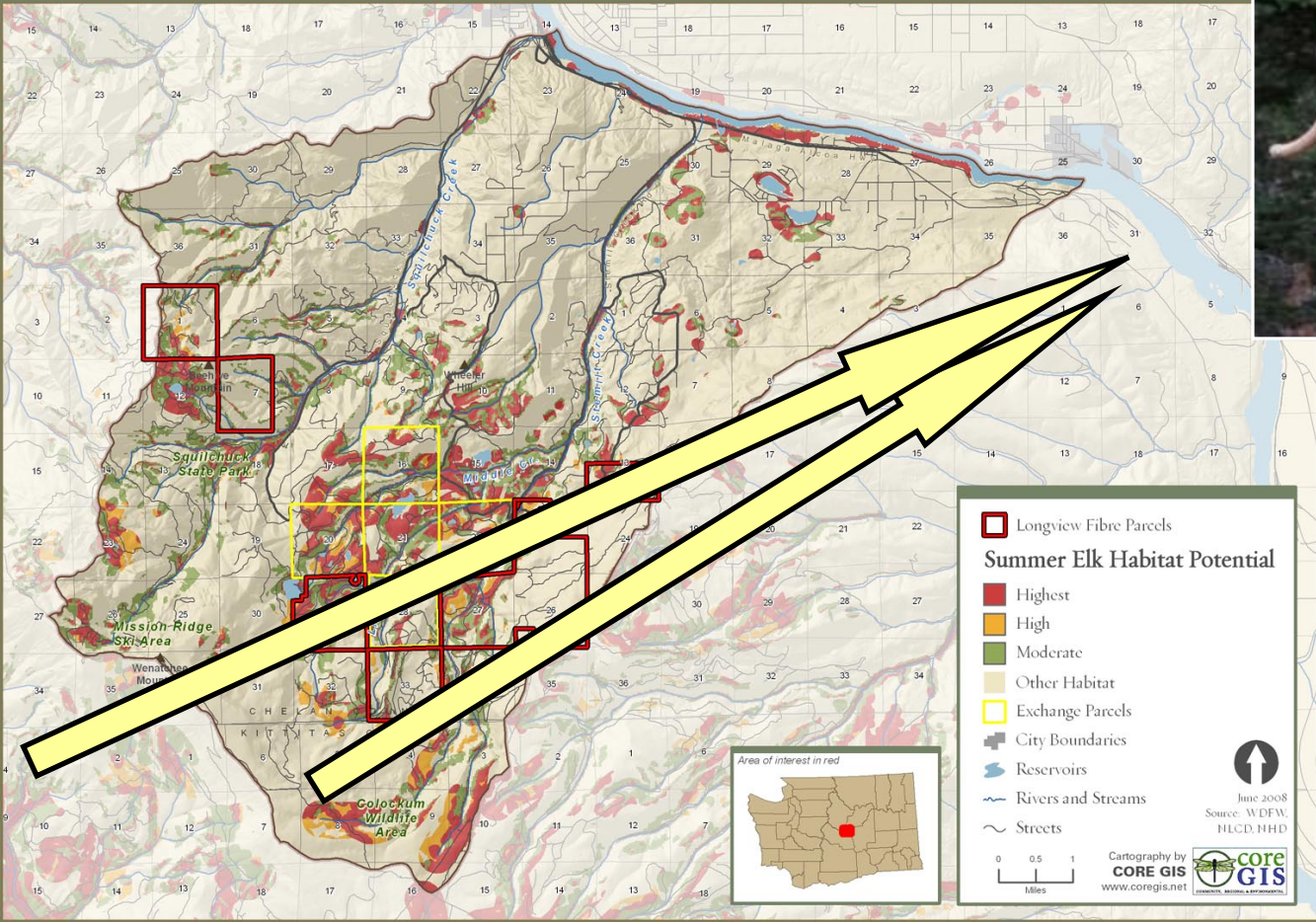
**LILY LAKE
Section 22**



Stemilt Property



Summer Elk Habitat Potential--Model Results Stemilt-Squilchuck Community Vision



Stemilt Property

Chelan County

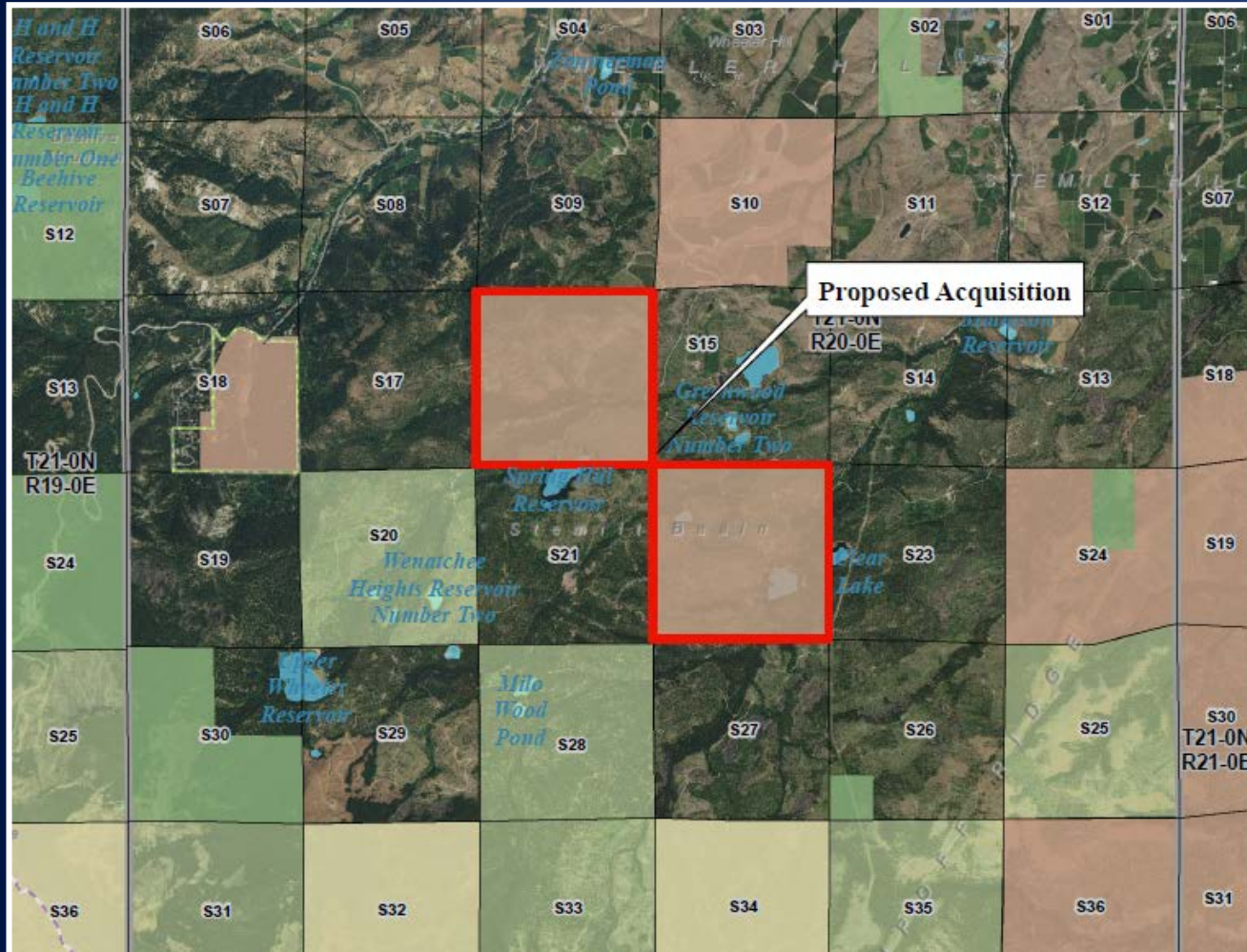


Pileated Woodpecker



Spotted Owl

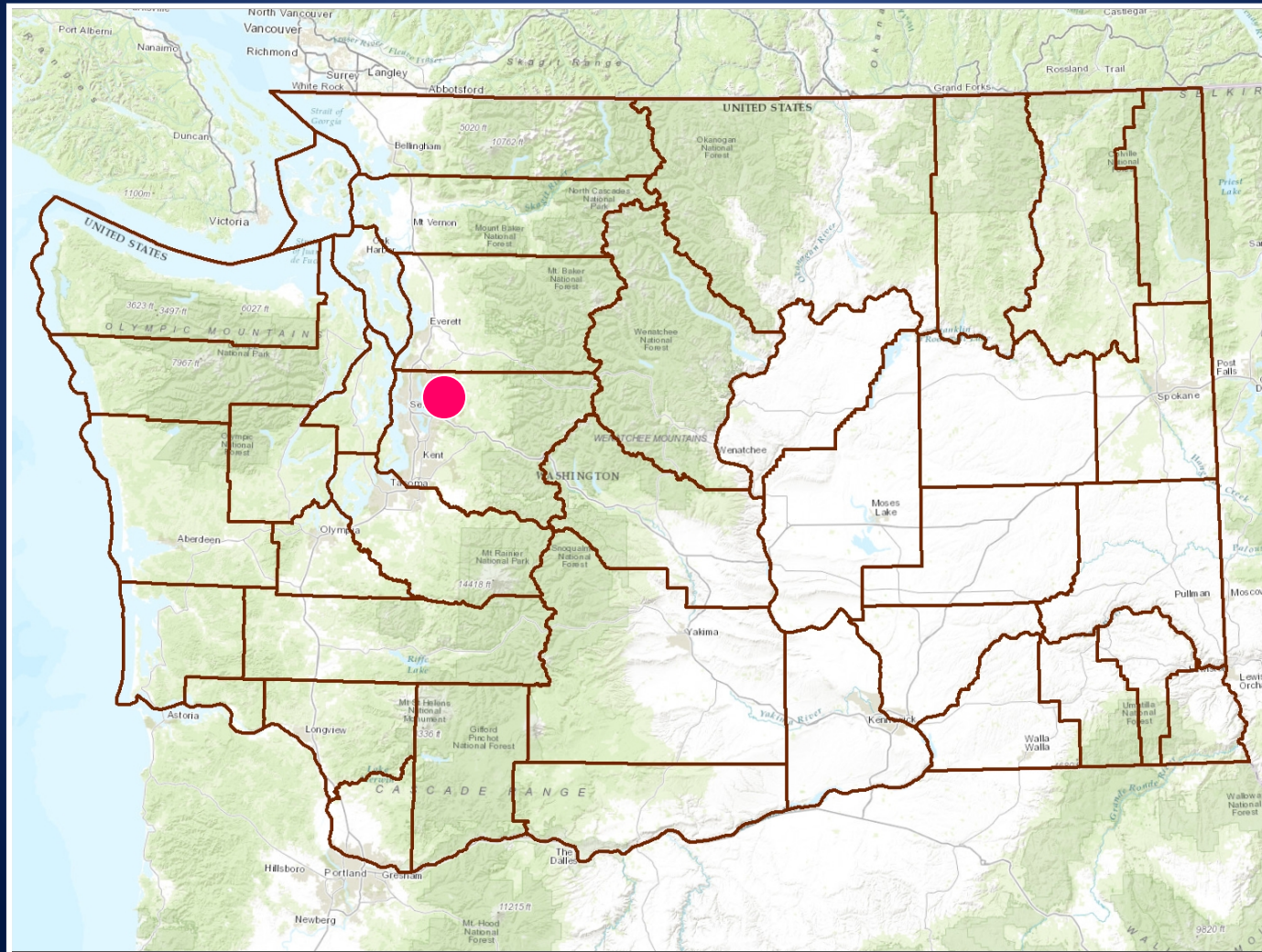
Stemilt Property Chelan County



Annual O & M - \$16,588
Annual PILT - \$3,764

Kenmore Utility Easement

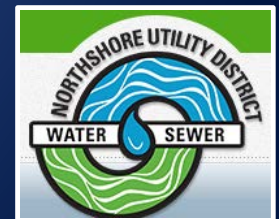
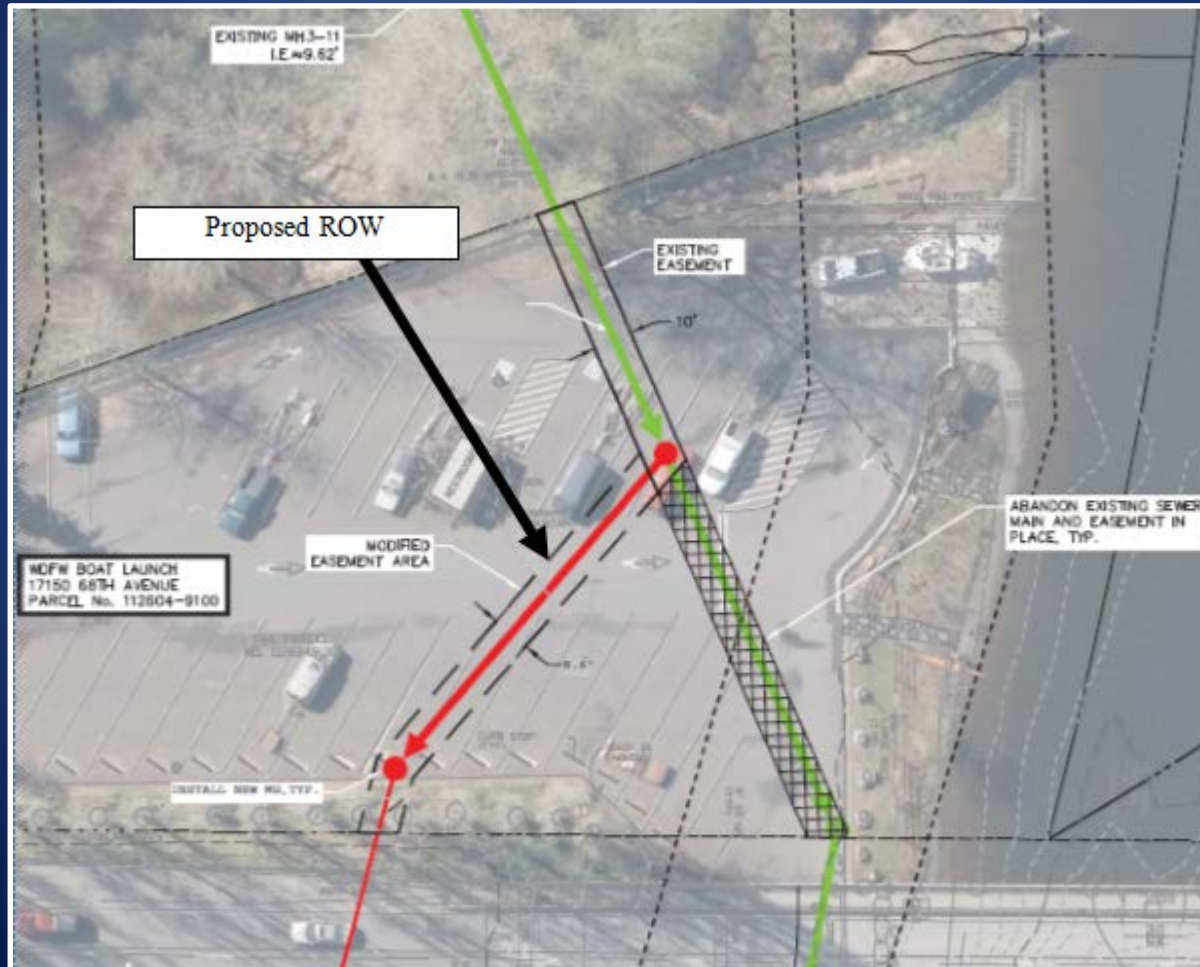
King County



Kenmore Utility Easement King County



Kenmore Utility Easement King County



Questions?



Stermilt Basin Photo WDFW