

WAC 220-415-130

Mountain Goat Seasons

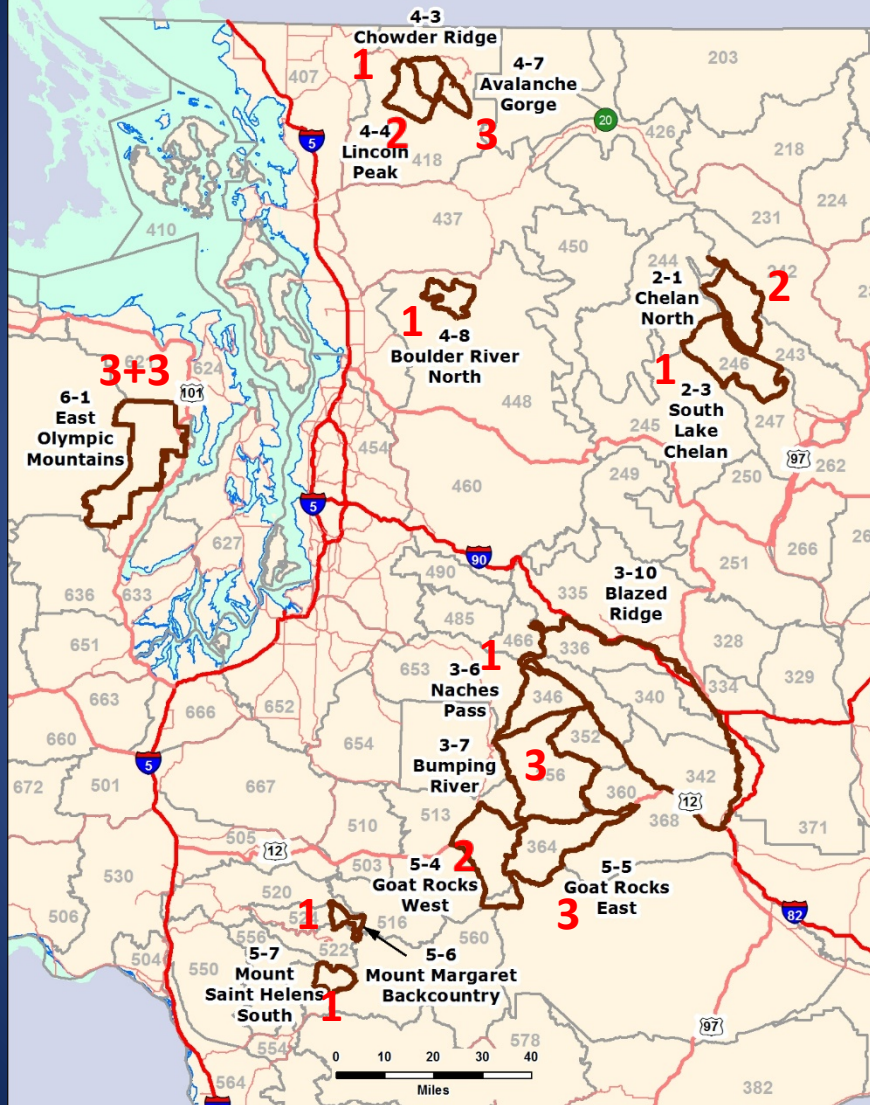


Washington Department of
FISH and WILDLIFE

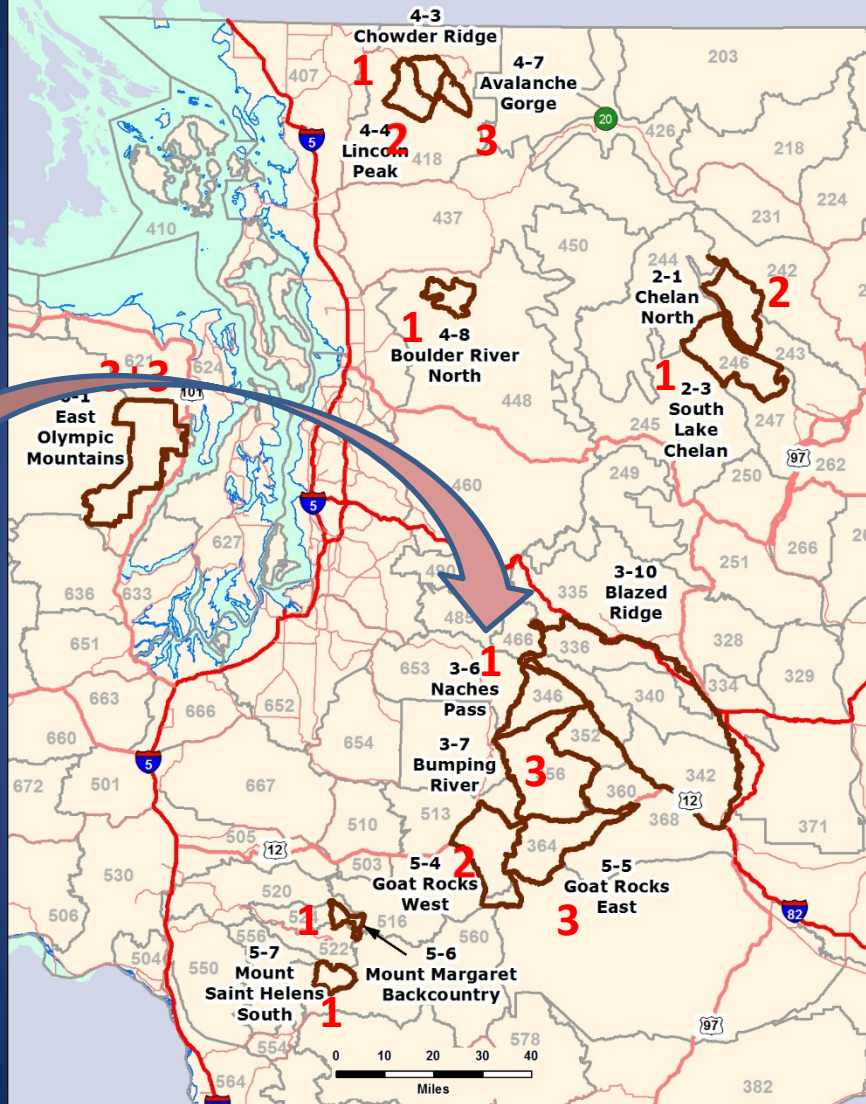
Rich Harris, Ph.D.

Bighorn Sheep, Moose, Mountain Goat, and Pronghorn
Antelope Section Manager, Game Division
Wildlife Program

2018-2019 Mountain Goat Hunt Areas



2018-2019 Mountain Goat Hunt Areas



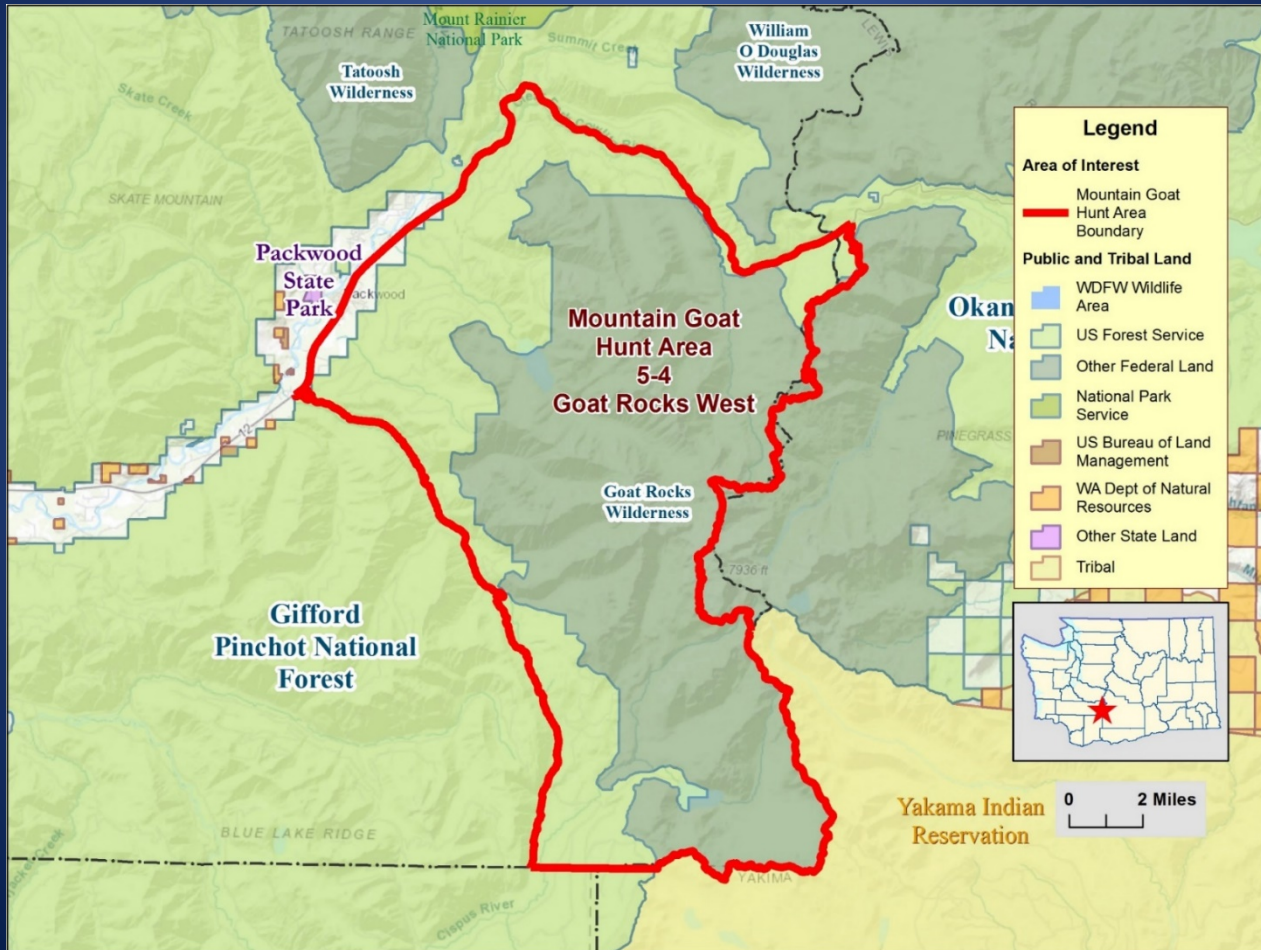
Begin 2018 season
In Naches Pass on
Oct 10 (not Sept 15)

Fire in 2017
precluded hunter
access during entire
season for 3 permit
holders in Naches Pass

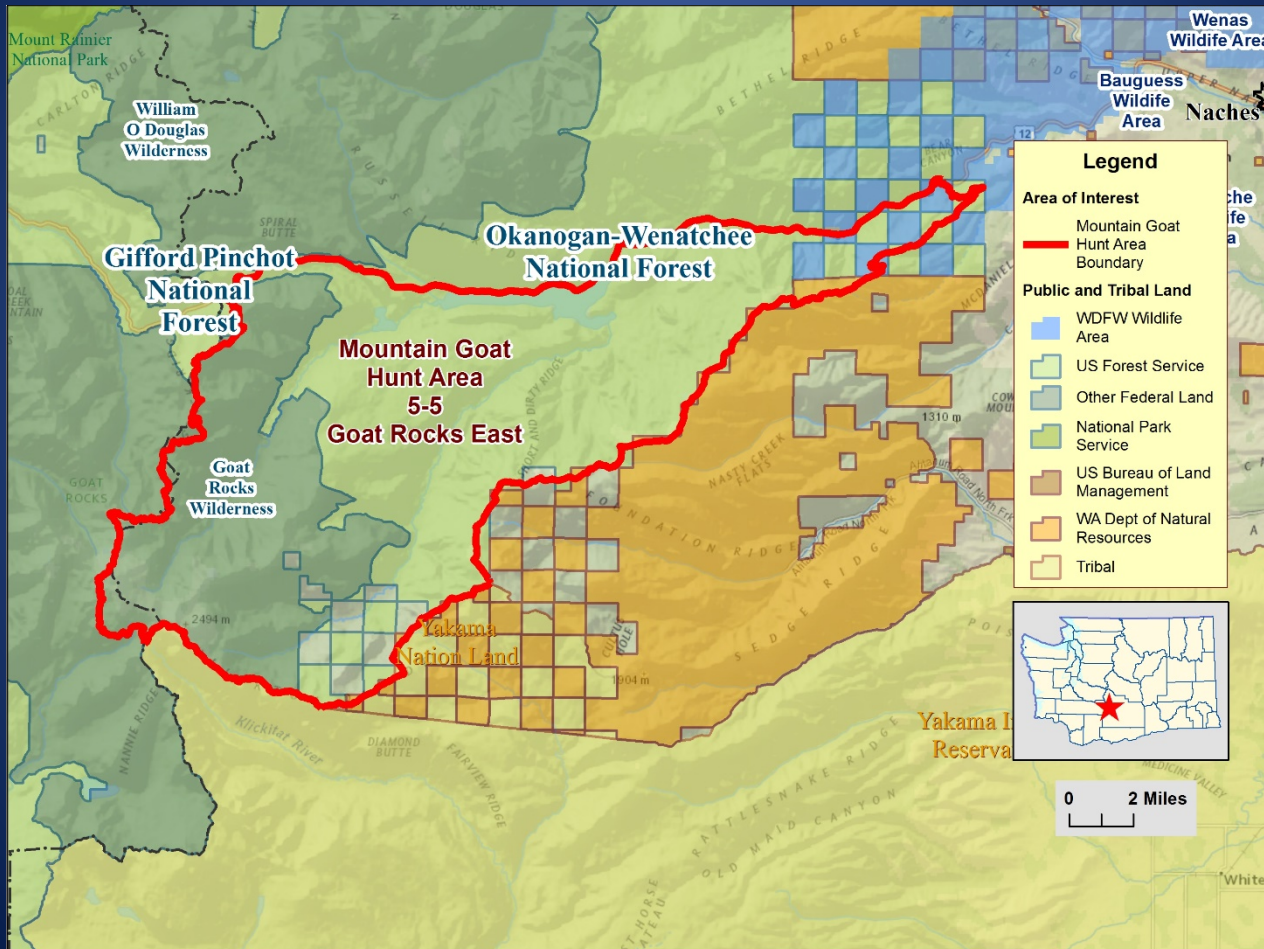
Mountain Goat Populations are Still Sensitive to Harvest

- Ensure we are not “mining” animals from only accessible parts of hunt areas.
- Minimize harvest of females (“nannies”).

2 Permits



3 Permits



Which is which?





**In field situations,
not so easy....**

Current Goat Gender Identification Education



Recommended Adjustments

Mountain Goat Gender Identification

- **Draft (March)**
- Applicants drawn for a permit may only purchase their license after successfully completing the WDFW online mountain goat gender identification **test** with a passing score (80% or higher). The test may be taken repeatedly until a passing score is achieved.
- **Final (April)**
- Applicants drawn for a permit may only purchase their license after successfully completing the WDFW mountain goat gender identification **training** (online or at a participating WDFW office).

Public Comments

Supporting Comments

- 1 supported the creation of new hunting areas in the Mt. St. Helens area
- 2 supported the creation of a new web-based gender ID test
- 2 supported subdividing the Goat Rocks unit into 2 adjacent areas
- 8 expressed general support of the proposals

Opposing, Neutral, and Other Comments

- 7 proposed initiating new hunts in various areas
- 1 favored removing the “Once in a Lifetime” limitation for the East Olympic conflict reduction hunt; 3 others supported continuing this hunt
- 3 expressed concern or opposed the gender ID test or had alternative suggestions re: harvesting nannies
- 1 favored allowing hunting with muzzleloader equipment on September 1
- 2 expressed concern about harvest from Tribal members

Questions?

