

# PROPOSED LAND TRANSACTIONS

## TABLE OF CONTENTS

August 10, 2018

Decision Page.....		i
Proposed Acquisition	Pheasants Forever Whitman County	
Location Map .....		1a
Local Map .....		1b
Highways Map .....		1c
Proposed Transfer	Wiley Slough Pump Station Transfer Skagit County	
Highways Map .....		2a
Local Map .....		2b

## Summary Sheet

---

**Meeting dates:** August 10 & 11, 2018 COMMISSION MEETING  
**Agenda item:** PROPOSED LAND TRANSACTIONS  
**Presenter(s):** Julie Sandberg, Real Estate Services Manager

---

### **Background summary:**

**Item 1:** Revere Addition - This proposal is to acquire by donation, 94 (+/-) acres in Whitman County, from Pheasants Forever, Inc. to be added to the Revere Wildlife area. A portion of the property is in existing shrub steppe and a portion needs restoration to native grassland. A ten year habitat restoration plan has been completed by WDFW which will be funded by Pheasants Forever. The property supports mule deer, coyotes, badgers, a variety of raptors and upland game birds including pheasants and quail. Sharp-tailed grouse have been documented on the adjacent WLA.

The property is valued at \$118,000 and will be donated by Pheasants Forever, Inc. Operations and maintenance costs are estimated at \$1,200 annually.

**Item 2:** Wiley Slough Pump Station Transfer – Skagit Wildlife Area, Skagit County: In 2009 a significant habitat restoration project was conducted at Wiley Slough involving the breaching of dikes. Numerous issues developed with the tide gates and drainage infrastructure. WDFW staff worked with many partners including the Skagit County Consolidated Diking Improvement District No. 22 (DD22) to form a Wiley Slough Workgroup to first address the pump station. The parties agreed that DD22 would assume ownership of the pump station and all future maintenance and operation responsibilities after it is determined that the new pump station is properly built and operational. If approved by the Commission ownership of the pump station will be transferred to DD22 with sufficient pumping capacity to reasonably achieve the district's drainage objectives in Wiley Slough.

---

### **Policy issue(s) and expected outcome:**

Protecting critical fish and wildlife habitat and providing public recreational opportunities.

---

### **Fiscal impacts of agency implementation:**

See Operations and Maintenance costs above.

---

### **Public involvement process used and what you learned:**

This projects were approved through the agency's Lands 20/20 Process.

---

### **Action requested and/or proposed next steps:**

Approval of the Land Transactions as presented

---

### **Draft motion language:**

Motion: I move to approve the transactions as presented by staff.

Is there a "second"?

If so, then motion maker discusses basis for motion; other Commissioners discuss views on motion; amendments, if any, proposed and addressed

---

### **Post decision communications plan:**

WDFW will distribute a press release informing the public of this action and proceed to closing.

---

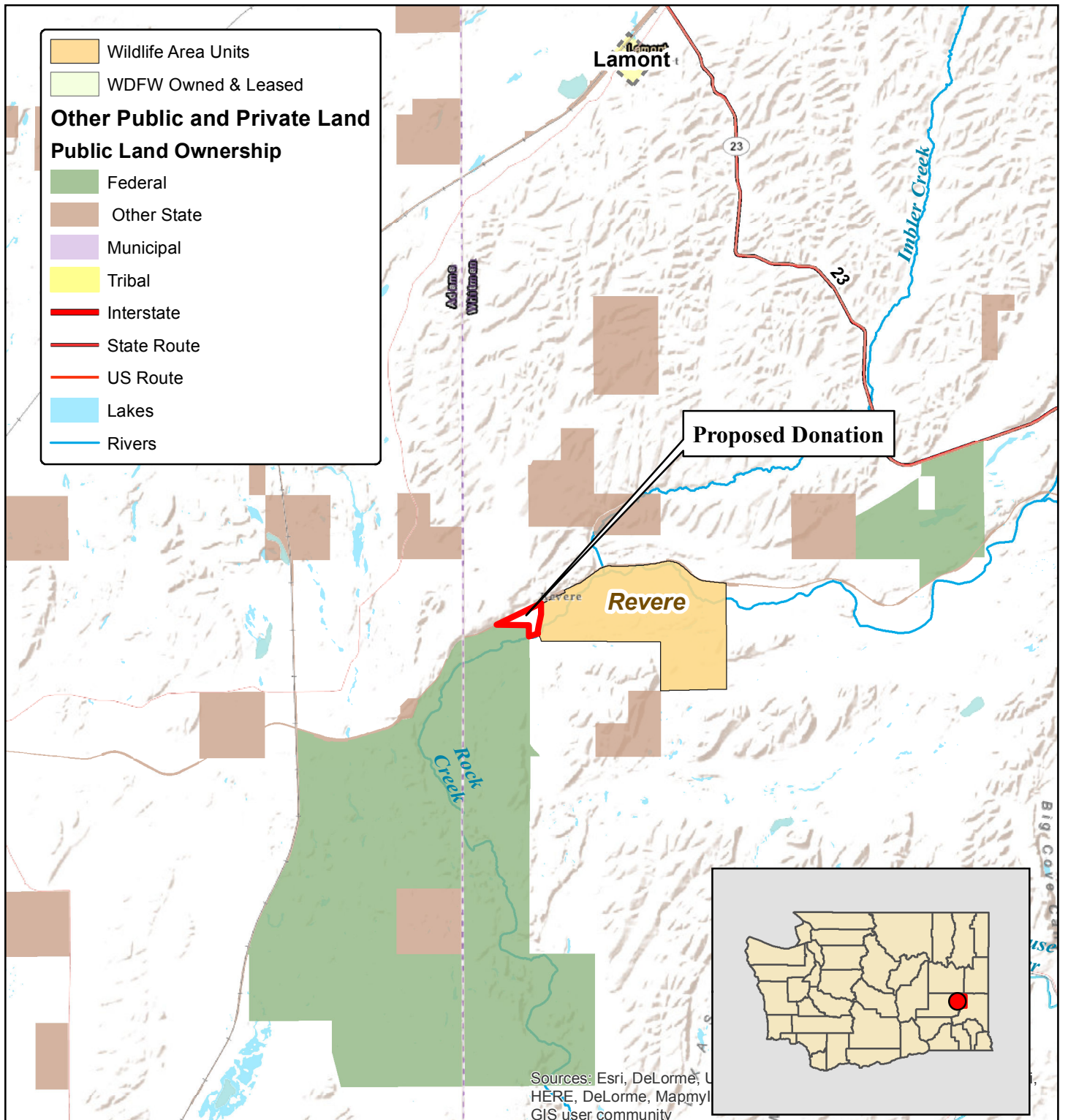
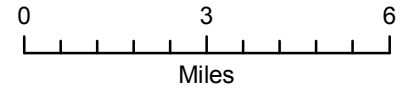


# ITEM 1: PROPOSED DONATION PHEASANTS FOREVER PROPERTY

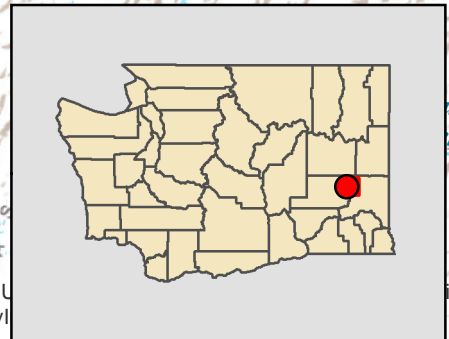
COUNTY: WHITMAN

LEGAL: TOWNSHIP 18N, RANGE 39E, SECTIONS 5, 6 & 8

ACRES: 94 (+/-)



Sources: Esri, DeLorme, U  
HERE, DeLorme, Mapmy  
GIS user community



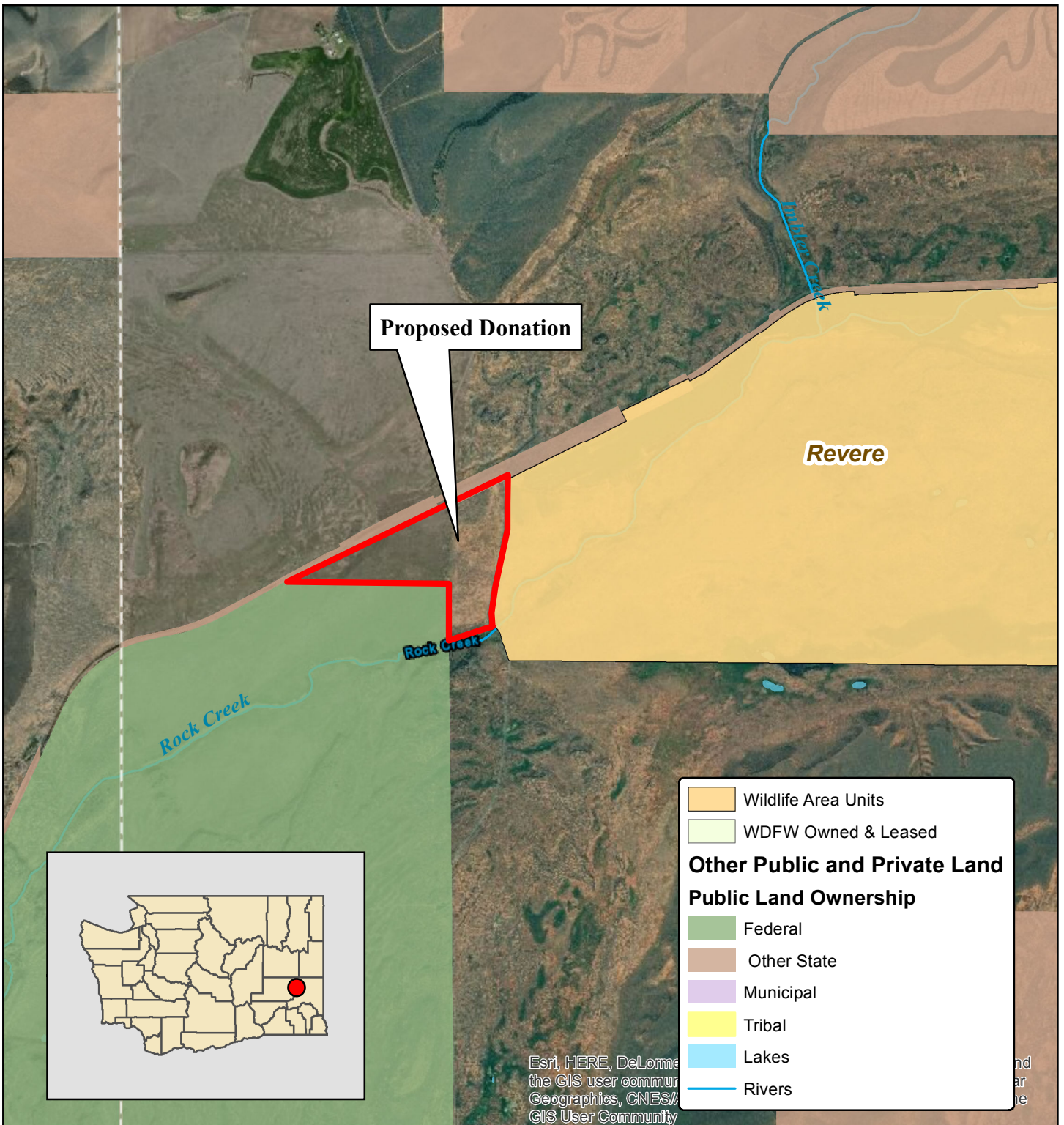
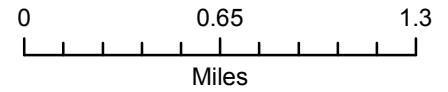


# ITEM 1: PROPOSED DONATION PHEASANTS FOREVER PROPERTY

COUNTY: WHITMAN

LEGAL: TOWNSHIP 18N, RANGE 39E, SECTIONS 5, 6 & 8

ACRES: 94 (+/-)

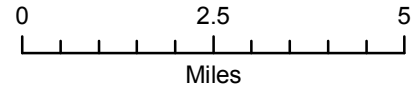




**ITEM 3: PROPOSED PUMP STATION TRANSFER WILEY SLOUGH**

**COUNTY: SKAGIT**

**LEGAL: TOWNSHIP 28N, RANGE 8E W.M., SECTION 34**

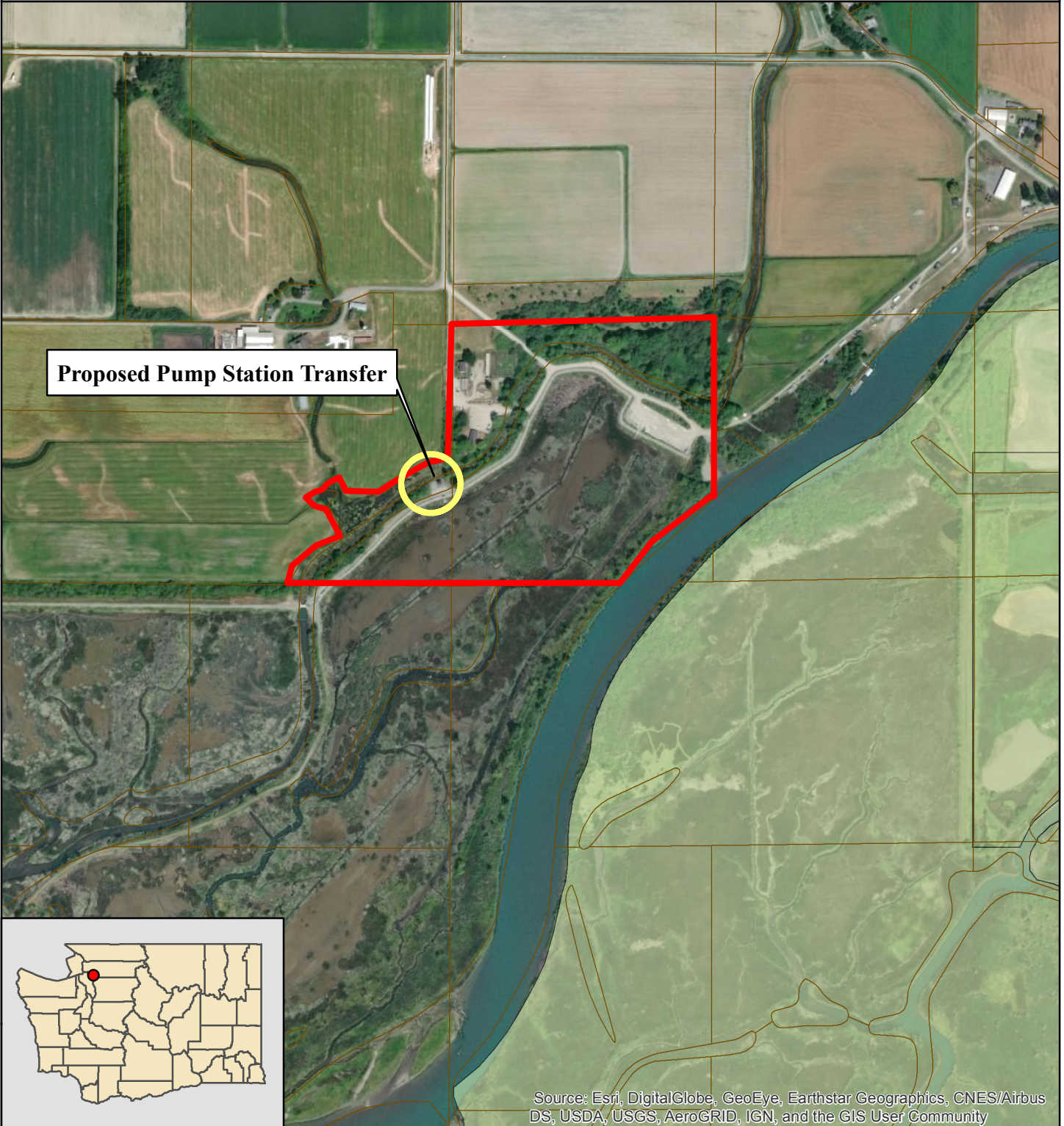
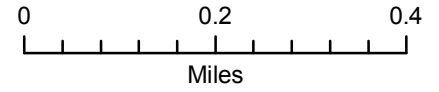




**ITEM 3: PROPOSED PUMP STATION TRANSFER WILEY SLOUGH**

**COUNTY: SKAGIT**

**LEGAL: TOWNSHIP 28N, RANGE 8E W.M., SECTION 34**



Source: Esri, DigitalGlobe, GeoEye, Earthstar Geographics, CNES/Airbus DS, USDA, USGS, AeroGRID, IGN, and the GIS User Community