

Agenda Item # 6

Land Transactions

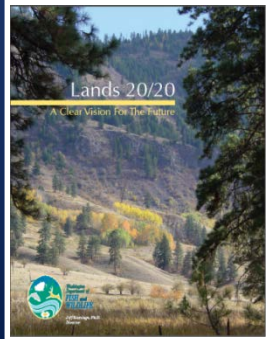
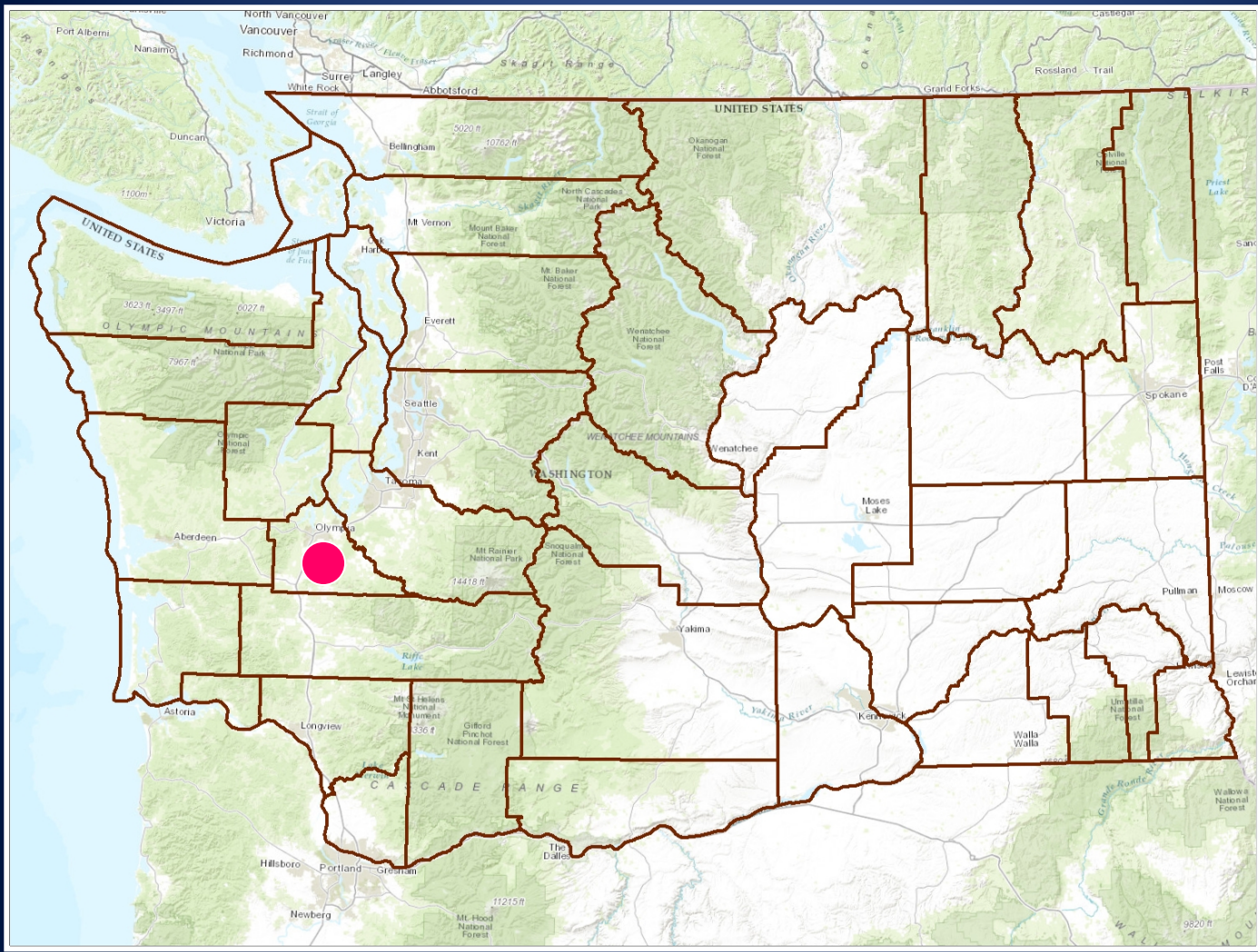


Washington Department of
FISH and WILDLIFE

Julie Sandberg
Real Estate Services Manager, Lands Division
Wildlife Program

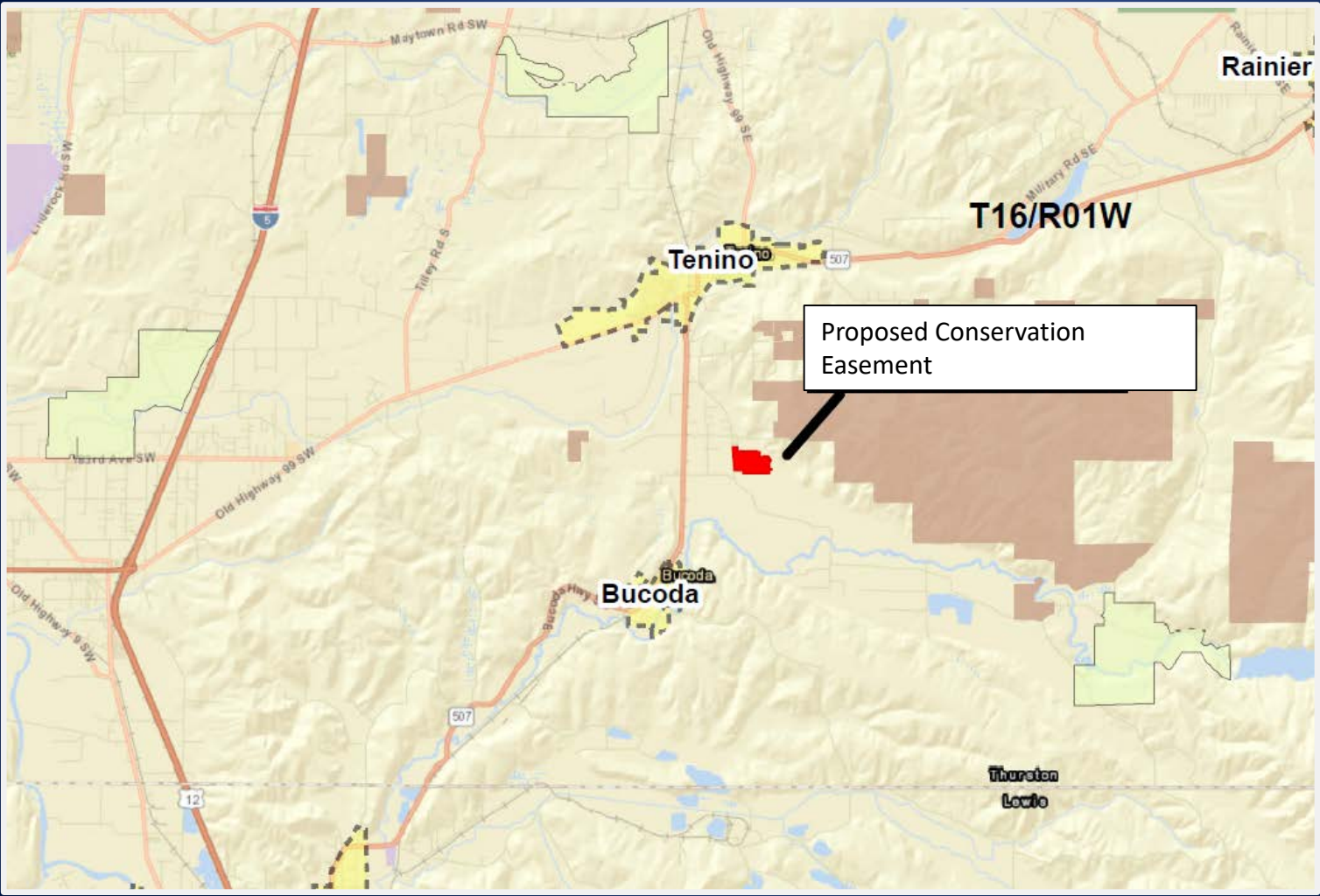
Wilridge Estates Conservation Easement

Scatter Creek WLA, Thurston County



Wilridge Estates Conservation Easement

Scatter Creek WLA, Thurston County

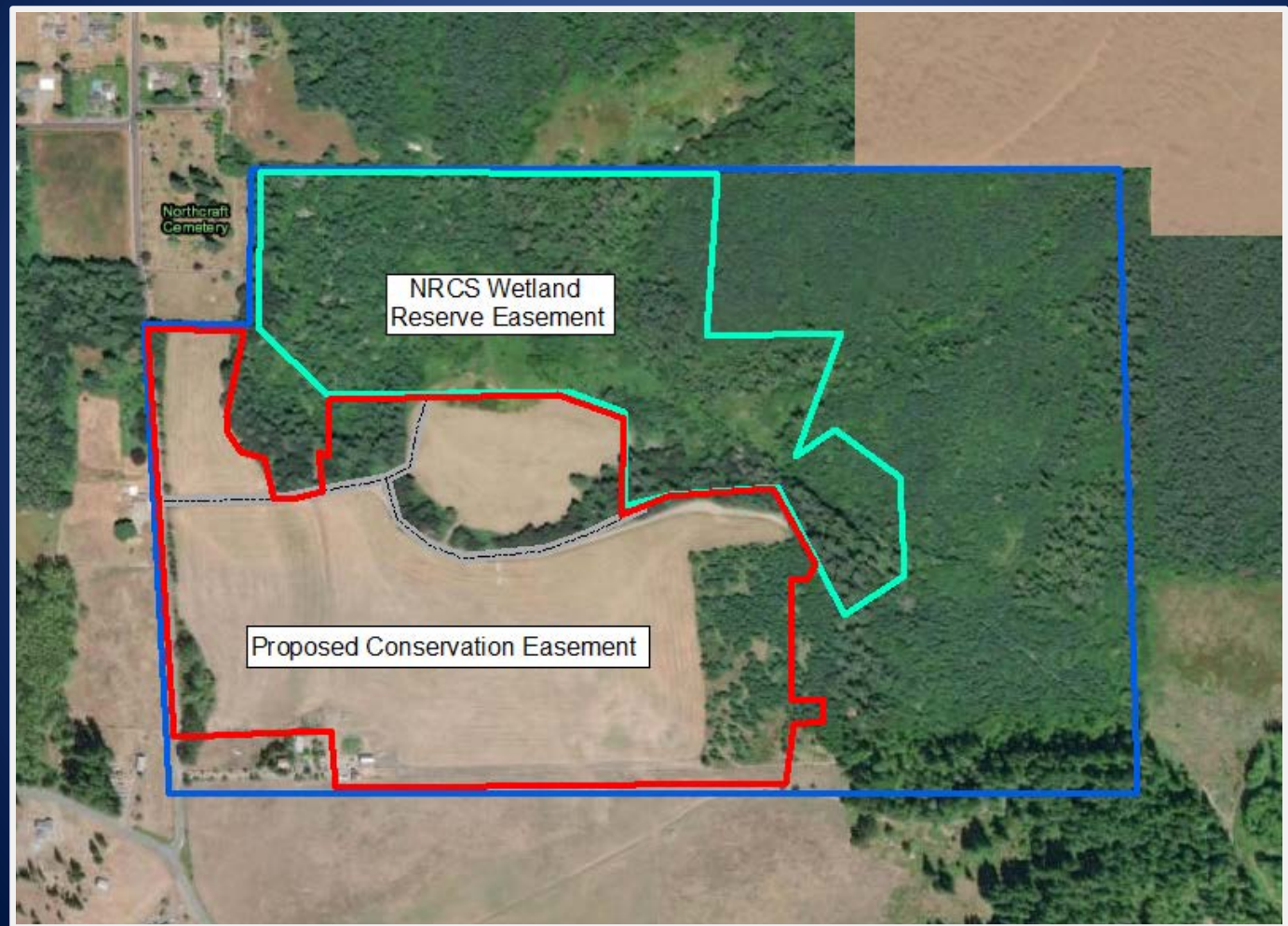


70 +/- acres



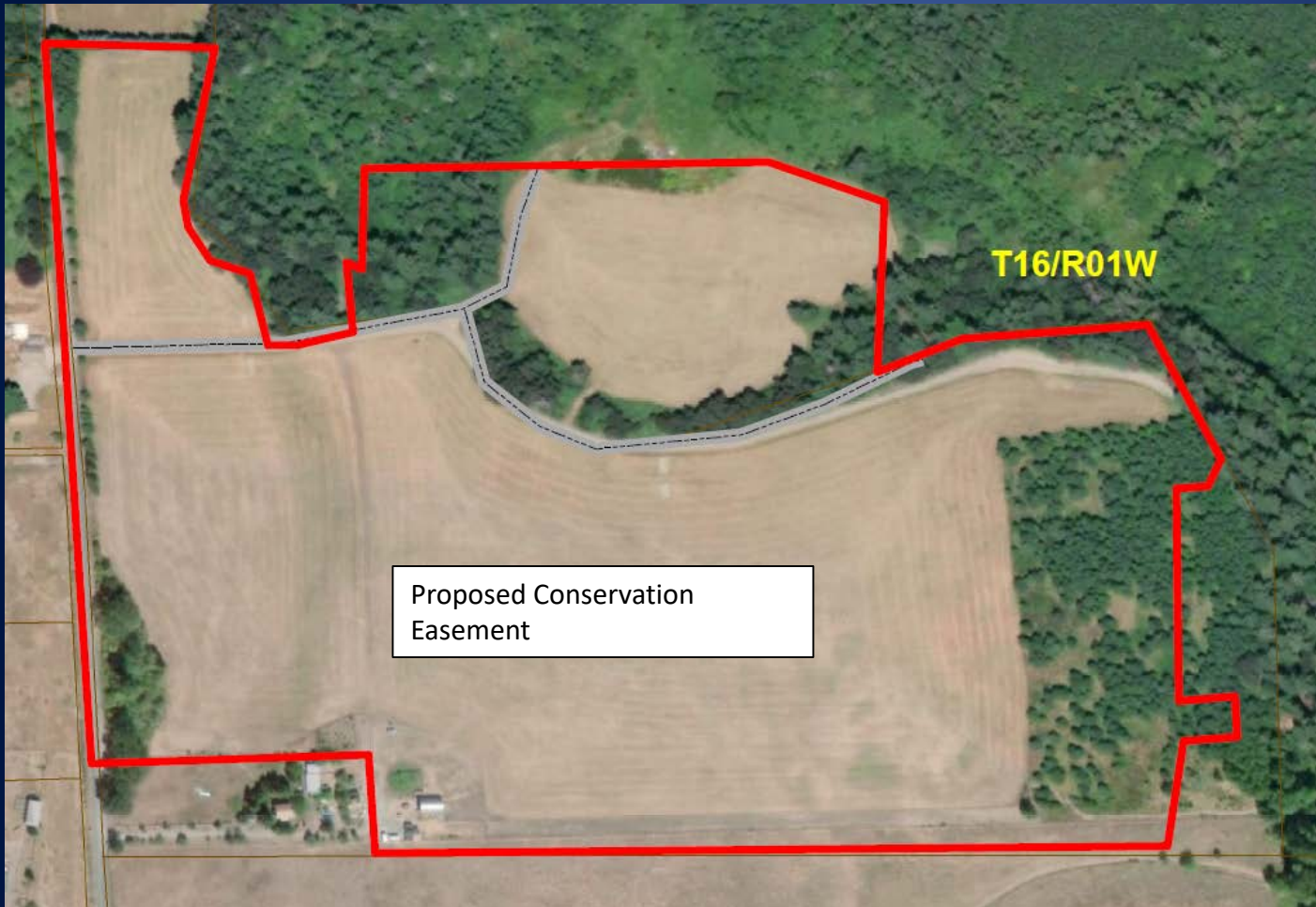
Wilridge Estates Conservation Easement

Scatter Creek WLA, Thurston County



Wilridge Estates Conservation Easement

Scatter Creek WLA, Thurston County



70 +/- acre
Conservation
Easement

Appraised Value
\$200,000

Wilridge Estates Conservation Easement

Scatter Creek WLA, Thurston County



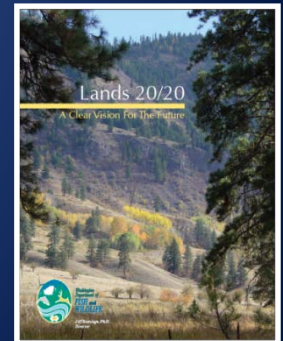
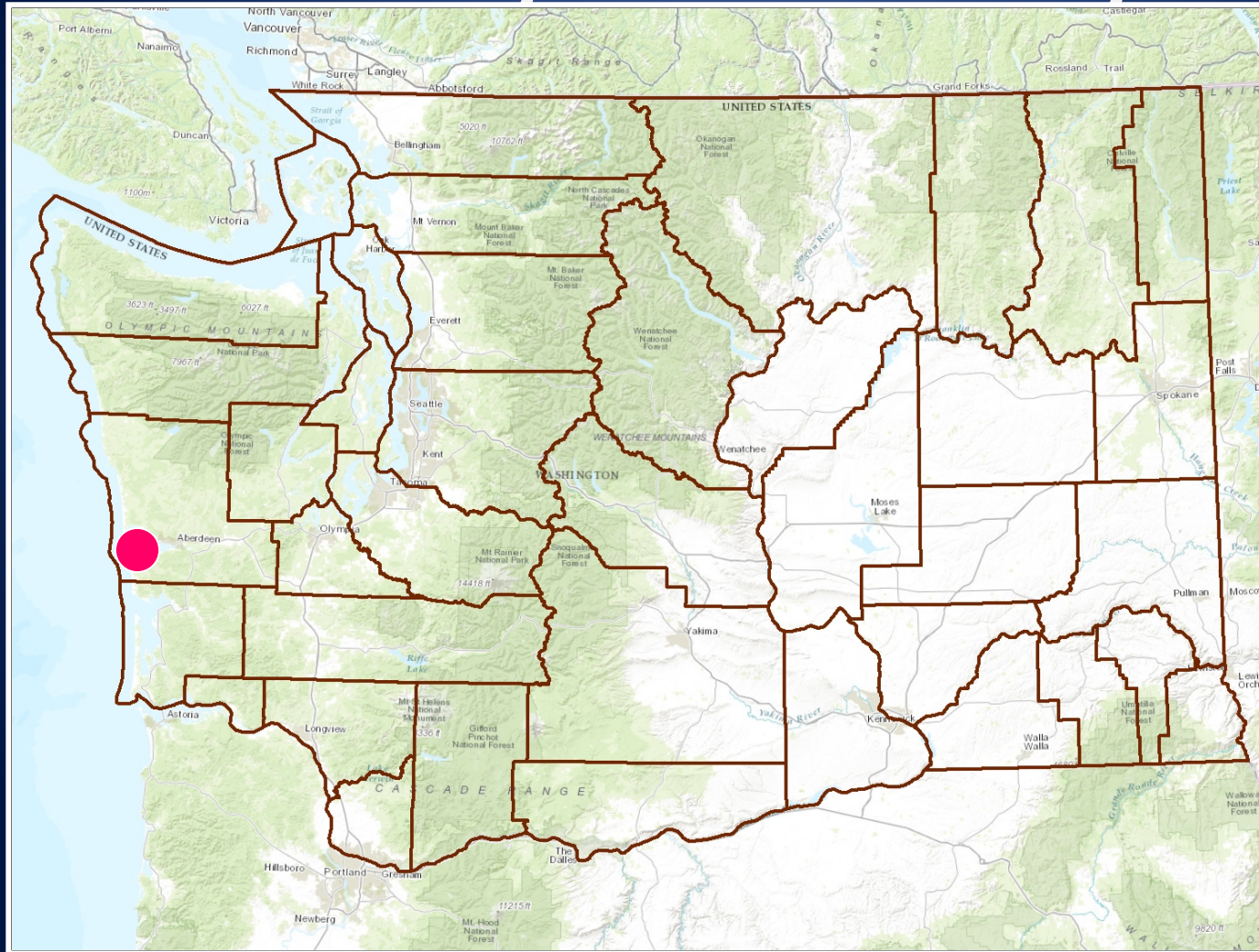
Mazama pocket gopher ~ R. Gilbert



Mazama pocket gopher mound

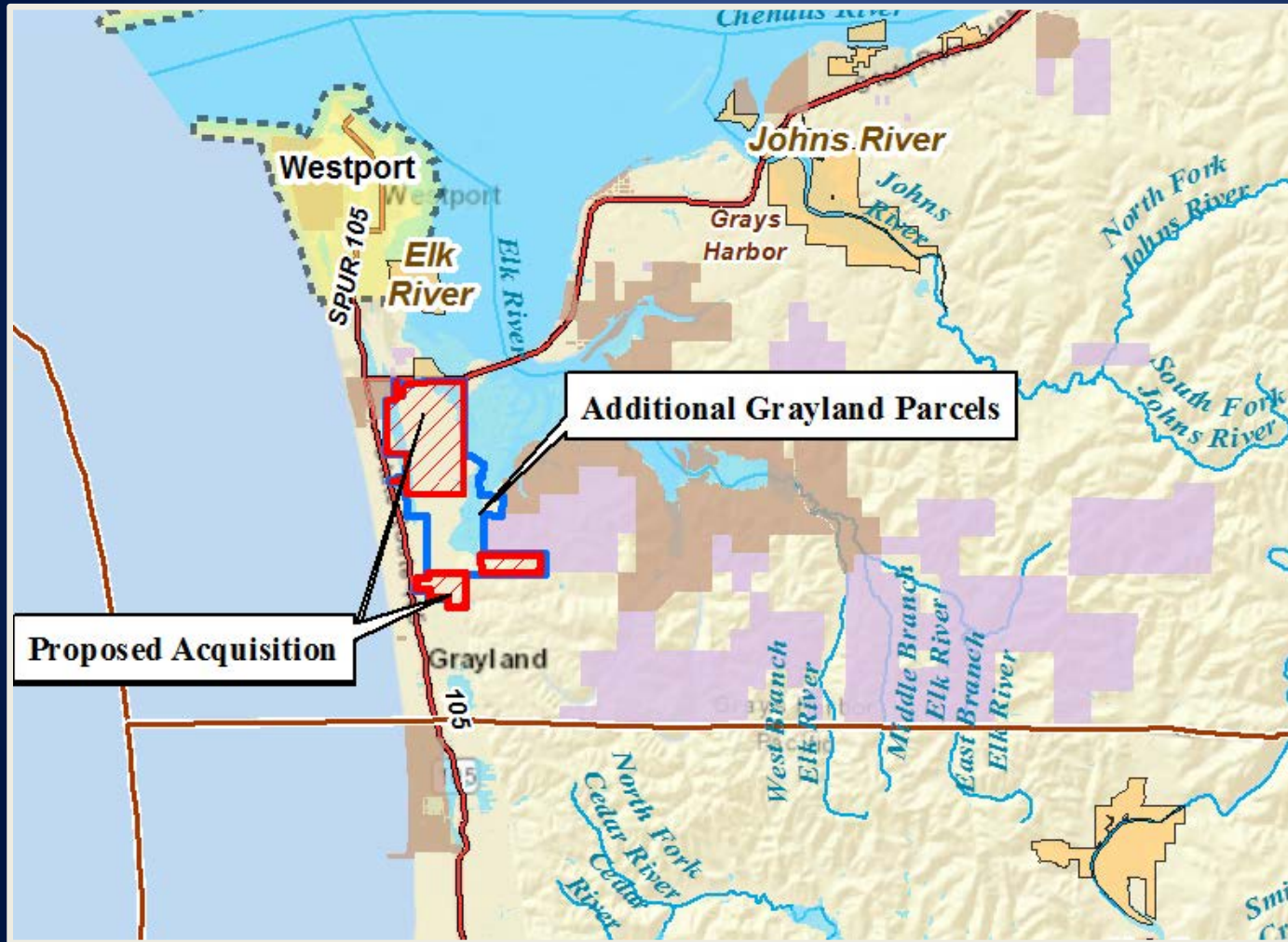
Grayland Property Acquisition Phase 1

Grays Harbor County



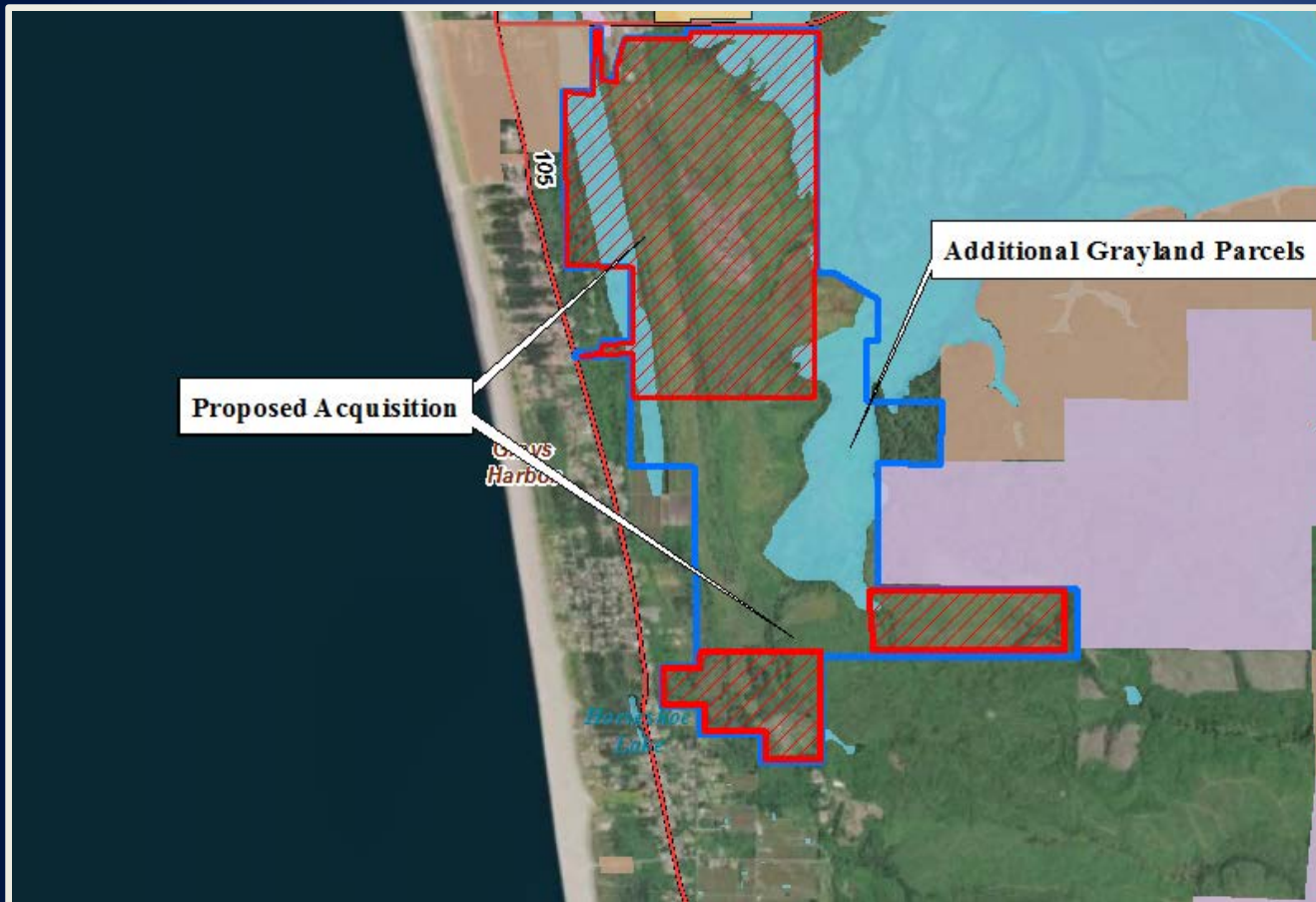
Grayland Property Acquisition Phase 1

Grays Harbor County



Grayland Property Acquisition Phase 1

Grays Harbor County



**1,110 (+/-) acre
Acquisition**

**Appraised Value
\$2,093,000**

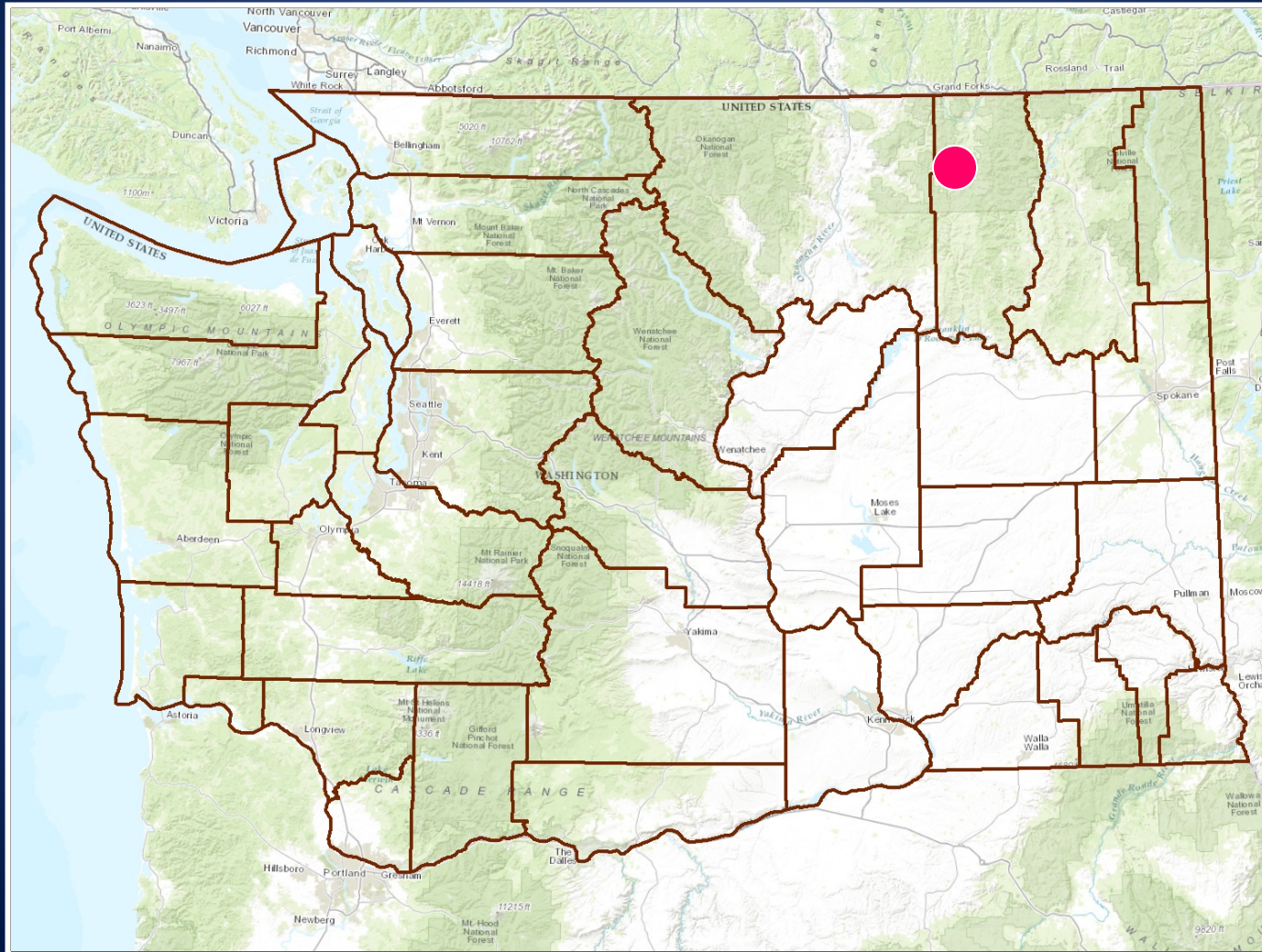
**Operations &
Maintenance
\$57,720 annually**

Grayland Property Acquisition Phase 1

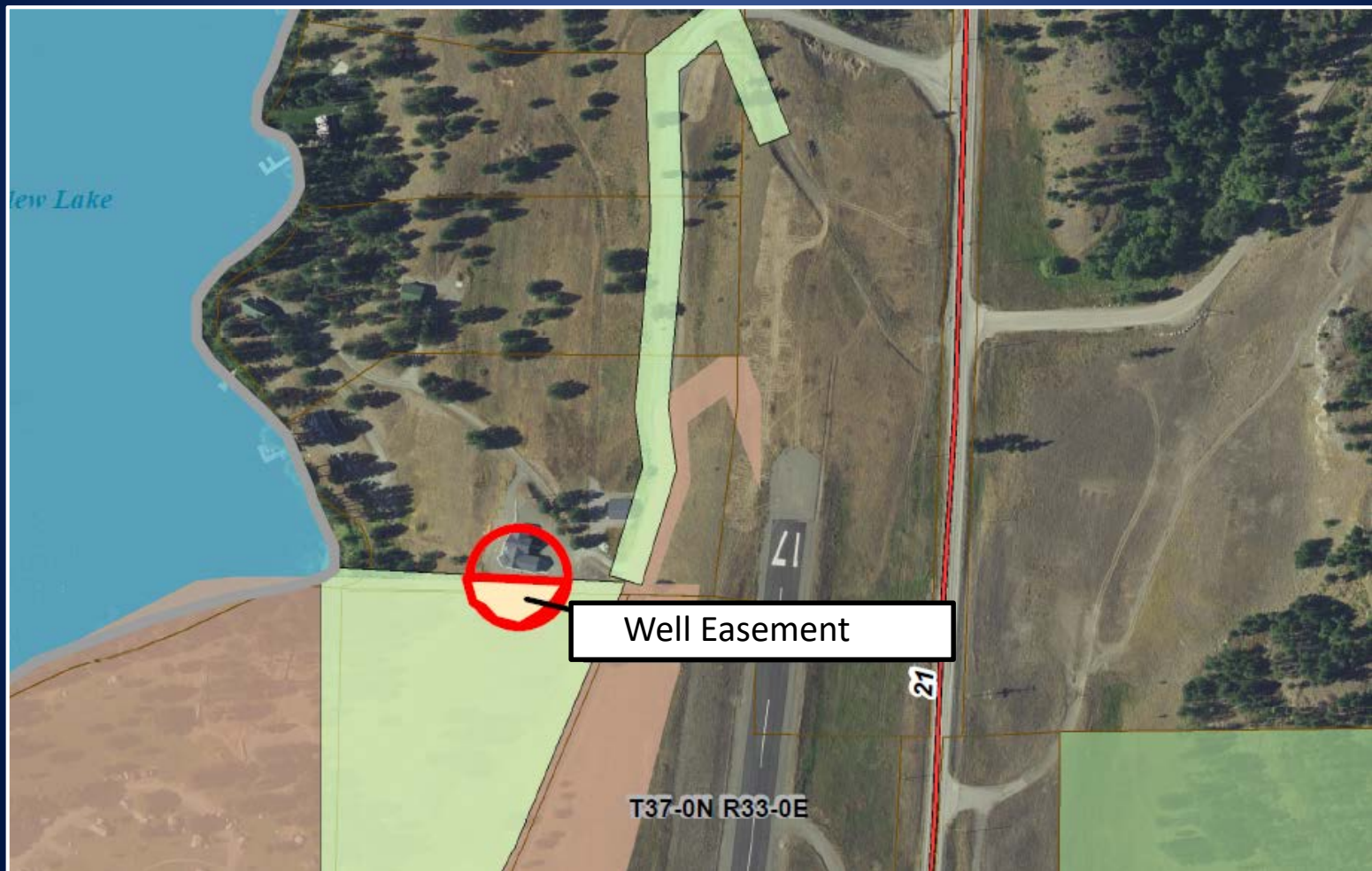
Grays Harbor County



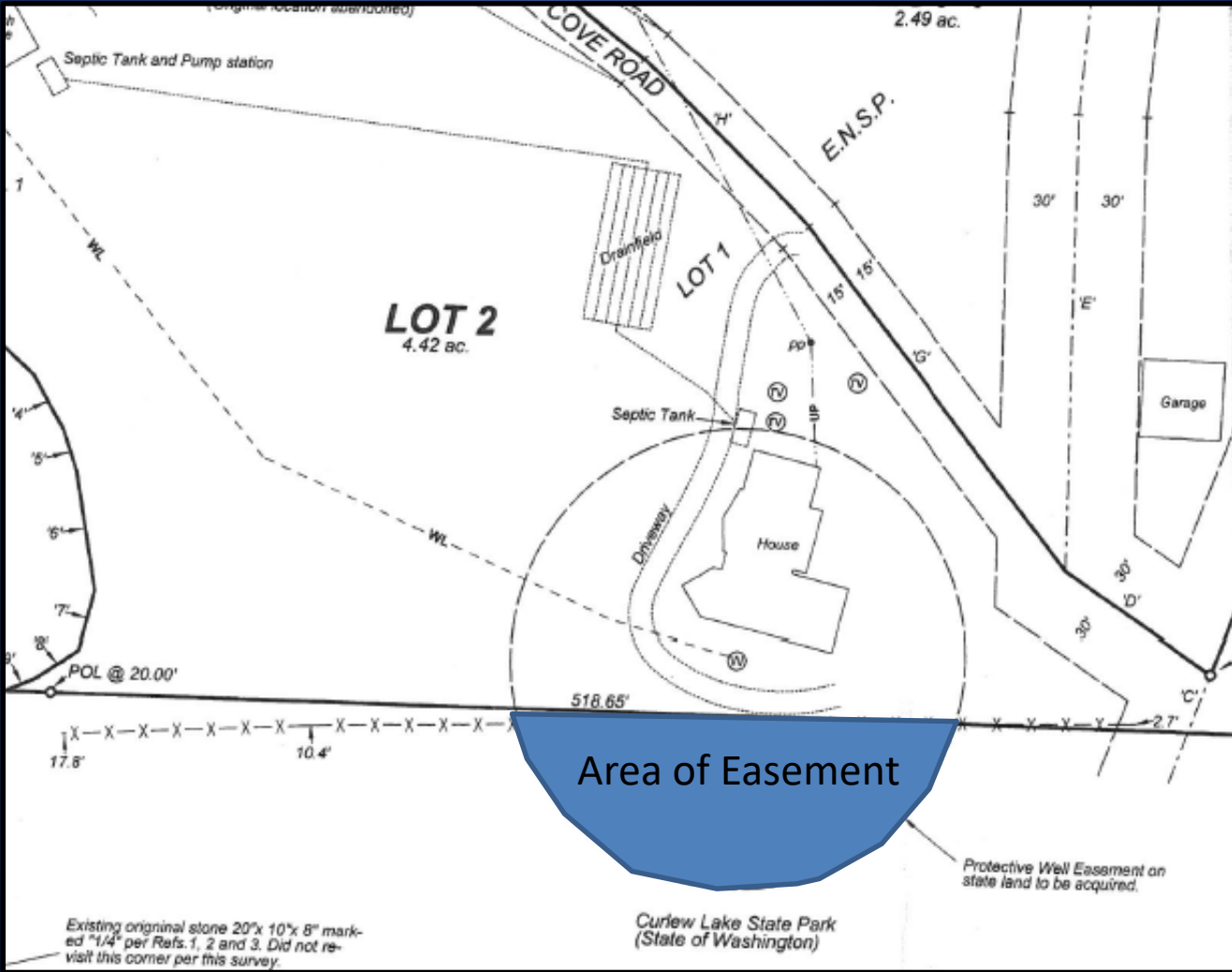
Curlew Lake Property, Well Easement Ferry County



Curlew Lake Property, Well Easement Ferry County



Curlew Lake Property, Well Easement Ferry County





Land Transaction Questions?