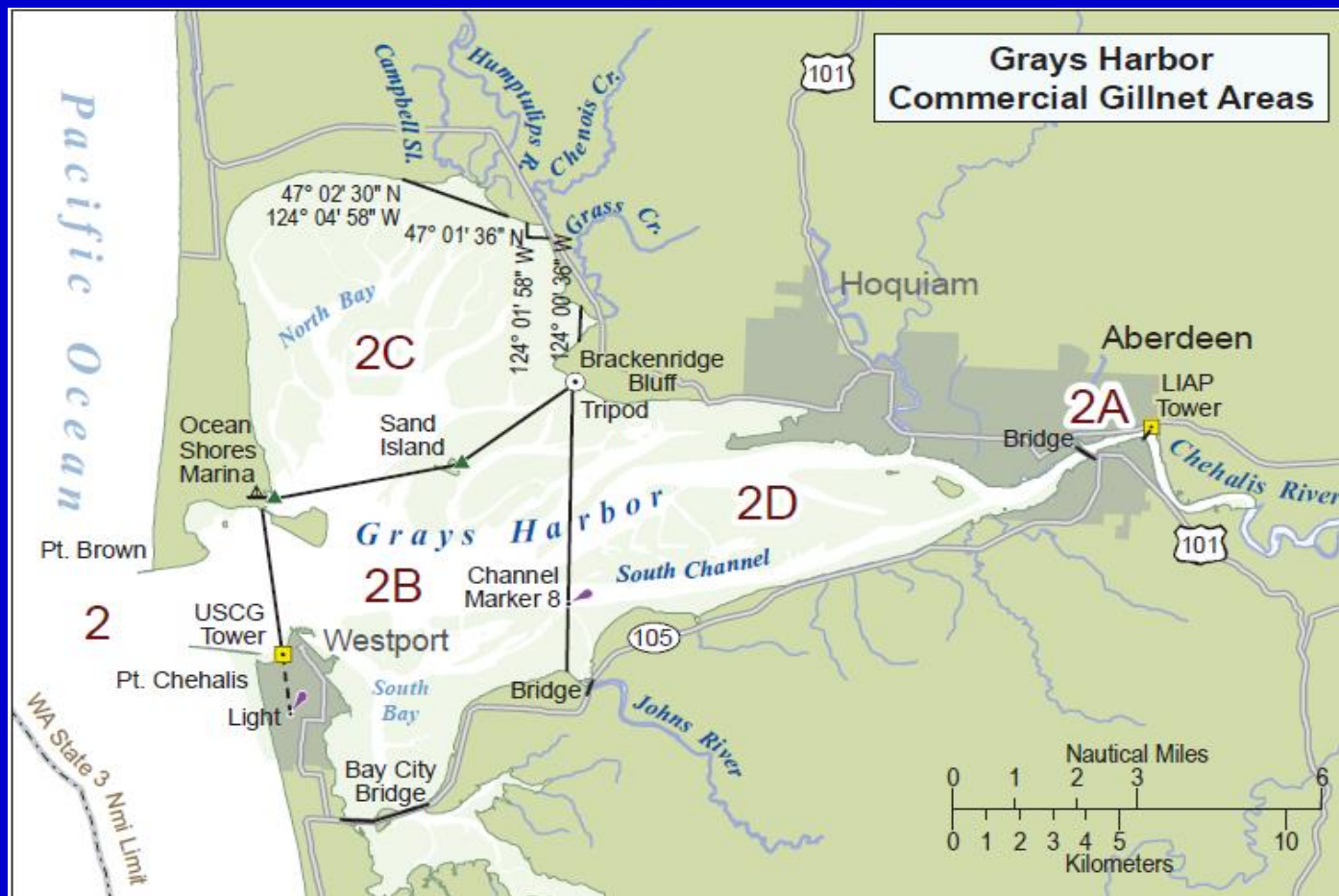




Grays Harbor Basin Salmon Management Policy 2018 Season Review



**Chad Herring/Mike Scharpf - Fish Program
Washington Fish and Wildlife Commission Meeting
February, 2019**

Purpose

- **Brief Commission on implementation of Grays Harbor Basin Salmon Management Policy.**

Presentation Outline

- **Review of key Policy elements**
- **Review 2018 planning**
- **Report on 2018 actual**
- **2019 implementation**

Key Policy Elements

- **Enhance conservation focus**
- **Reduce gear conflict/provide fish passage windows**
- **Guidance for sharing of available impacts**

Enhance Conservation Focus

- **Advance conservation and restoration of wild salmon**
- **Limit the impacts of WDFW-managed fisheries to a maximum of 5% of the adult return if:**
 - **natural origin forecasts are less than 10% over goal.**
 - **spawning goals for natural spawning salmon are not met in three out of the previous five years.**

Reduce Gear Conflict

- ***“... if possible, so that in any given calendar week there are a minimum of three consecutive days when no treaty or state-managed commercial fisheries occur. If the treaty fishery occurs 4 or more days in a calendar week, no WDFW-managed commercial fishery shall occur in the remaining days of the week.”***

Sharing of Impacts

Fishery management objectives, in priority order, are:

- 1) Achieve spawner goals**
- 2) Provide meaningful recreational fishing opportunities for Chinook**
- 3) Limit commercial fishery impacts to the incidental harvest of fall Chinook during fisheries directed at other species**

Sharing of Impacts

- **Recreational sharing between marine and freshwater fisheries**
- **Sharing allocations are determined on sliding scales based on pre-season information**

Review of 2018 Planning

- **Constraining stocks:**
 - **Grays Harbor Coho 20% total ER by PST**
 - **Humptulips River natural-origin Coho below spawner goal – 5% impact limit**
 - **Chehalis River natural-origin Chinook below goal 3 of 5 years – 5% impact limit**
- **Humptulips Chinook and Grays Harbor Chum were forecasted at more than 10% over goal**
- **Developed fisheries to comply with key policy elements**

2018 Preliminary Chinook Performance

- Pre-season forecast provided fishing opportunity
- Spring Chinook sport fishery is small
- Return much lower than forecasted

Spring Chinook

Metric	Objective	Pre-Season	Actual*
Run-Size		1,748	532
Spawners	1,400	1,594	493

* - Preliminary

2018 Preliminary Chinook Performance

- **Maximum WDFW impact 5%**
- **No directed fisheries on Chehalis fall Chinook**
- **WDFW-managed commercial fisheries in Areas 2A and 2D allowed up to 0.8% impact**

Chehalis Natural Fall

Metric	Objective	Pre-Season	Actual*
Run-Size Natural Origin		10,807	18,754
Natural Spawners	9,753	9,112	17,000
WDFW-Managed Fisheries	5%	3.1%	2.65%
NT Commercial HR	0.8%	0.21%	0.16%

* - Preliminary

2018 Preliminary Chinook Performance

- Meet conservation objective
- WDFW-managed commercial fisheries in Areas 2C allowed up to 5.4% impact
- Co-manager collaboration for data collection used for escapement estimate

Humptulips Natural Fall

Metric	Objective	Pre-Season	Actual*
Run-Size Natural Origin		5,592	5,405
Natural Spawners	3,573	4,214	4,000
NT Commercial HR	5.4%	2.45%	0.12%

* - Preliminary

2018 Preliminary Coho Performance

- Achieved conservation objective 3 of the past 5 years and forecast abundance is above 110%
- No impact limitations due to Policy guidance
- Pre-season forecast triggered a “Low Abundance threshold” in the Pacific Salmon Treaty

Chehalis

Metric	Objective	Pre-Season
Run-Size Natural Origin		35,756
Natural Spawners	28,506	N/A
PST	20%	N/A

* - Preliminary

2018 Preliminary Coho Performance

- **Have not achieved conservation goal 3 of the past 5 years, forecasted abundance less than conservation goal.**
- **WDFW-managed fisheries limited to 5% impact under Policy guidance**
- **Contribute to PST 20% total exploitation for Grays Harbor Coho**

Humptulips

Metric	Objective	Pre-Season
Run-Size Natural Origin		4.717
Natural Spawners	6,894	3,909
WDFW-Managed Fisheries	5%	3.95%

* - Preliminary

2018 Preliminary Chum Performance

- Achieved conservation objective 3 of the past 5 years and forecast abundance is above 110%
- Policy guidance, achieve conservation objective
- Conservation objective was achieved.

Grays Harbor Chum

Metric	Objective	Pre-Season	Actual*
Run-Size		61,144	41,695
Spawners	21,000	36,347	28,413
NT Commercial harvest		5,406	1,985

* - Preliminary

2018 Actual Performance

WDFW-Managed Commercial Catch/Impacts

Species	Pre-season		Actual	
	NOR	HOR	NOR	HOR
Chinook	208	113	82	2
Coho	680	749	639	179
Chum	5,406		1,985	

2018 Actual Performance

WDFW-Managed Commercial Ex-vessel Value Policy long term projection \$74,042

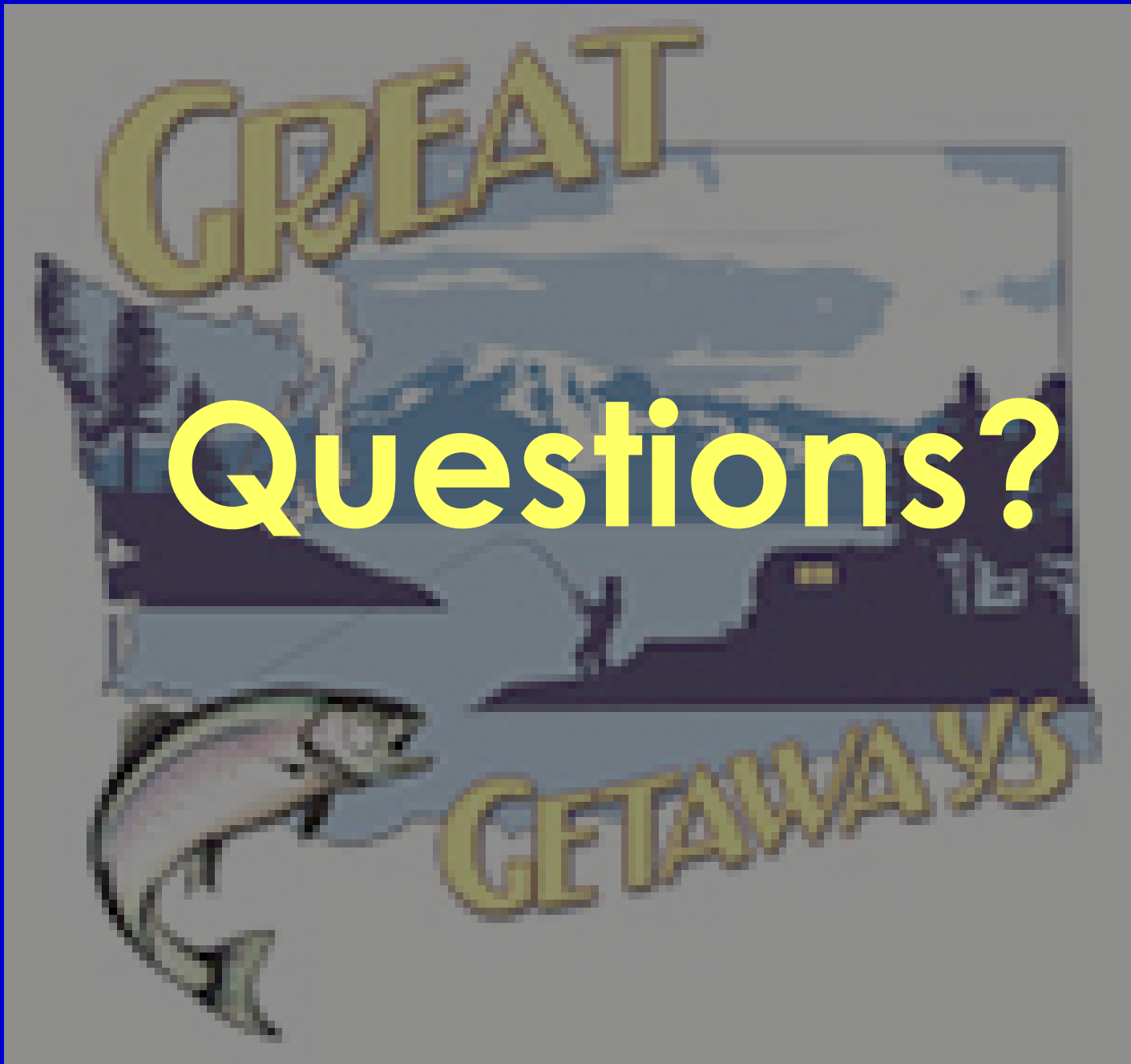
Year	Predicted	Actual
2015	\$121,386	\$43,212
2016	\$62,556	\$13,608
2017	\$66,190	\$66,347
2018	\$55,225	\$37,925

Other Policy Components

- **Chum escapement methodology:**
 - **Multi-year project to evaluate methodology**
 - **In cooperation with the Chehalis and Quinault tribes**
- **Wynoochee Mitigation Plan:**
 - **Communication and discussion with QIN and Tacoma Power are on-going**
 - **A plan was developed and shared with QIN for comments**

2019 Implementation

- **Fishery Management Challenges**
 - **Concurrence in management objectives among state, tribal, and federal governments**
 - **Crafting commercial fishery schedule that utilizes allocated available impacts**
 - **Active monitoring of recreational fisheries to inform in-season actions**
- **Constraining Stocks:**
 - **Chehalis River natural-origin Chinook**
 - **Humptulips River natural-origin Coho**



Questions?