

**WACs 220-410-040, 220-410-060,
220-413-180, 220-414-070, and 220-415-040**

Hunting Boundaries and Archery Requirements



Washington Department of
FISH and WILDLIFE

Brock Hoenes

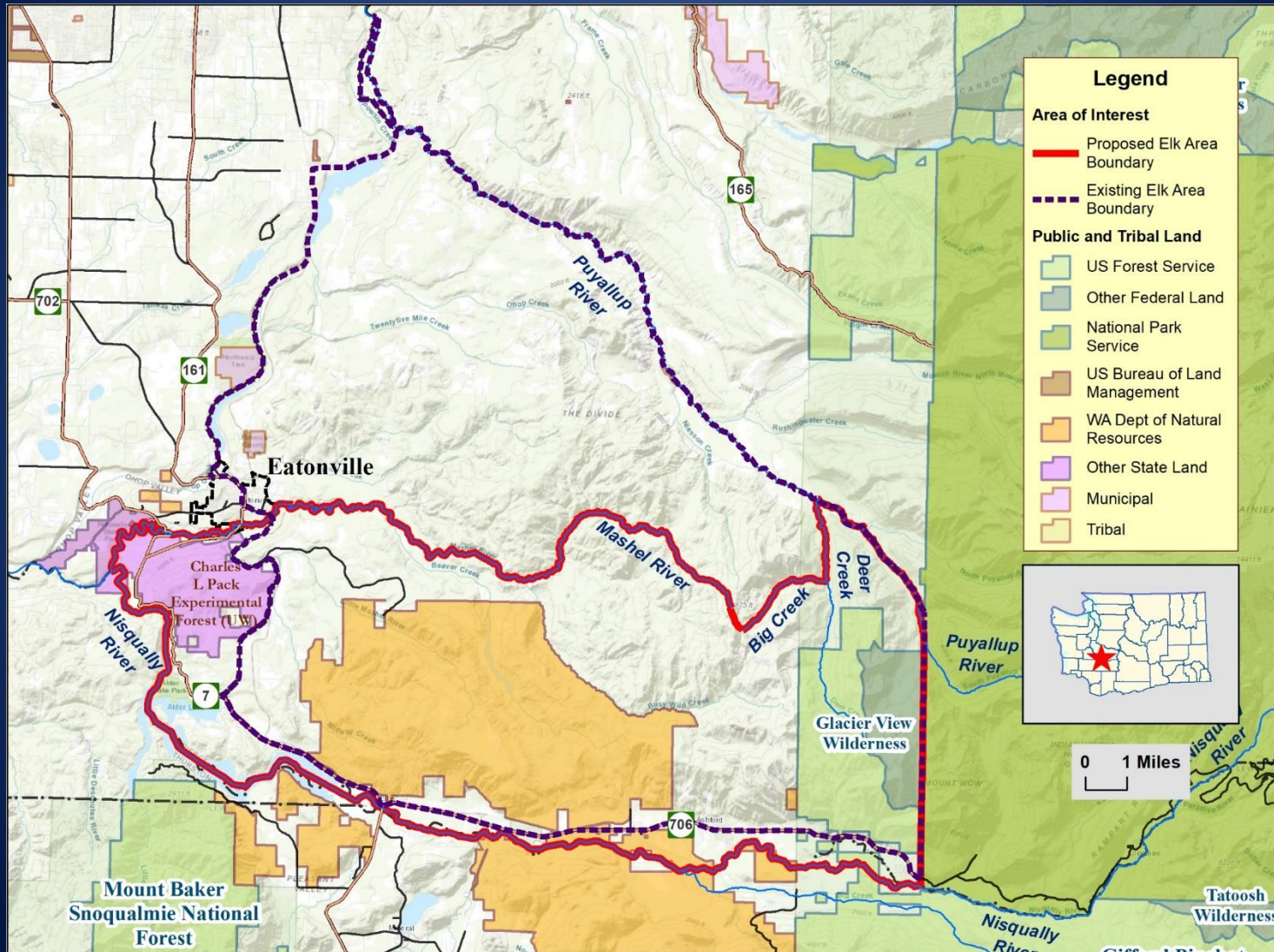
**Deer and Elk Section Manager, Game Division
Wildlife Program**

Elk Area Descriptions

WAC 220-415-040

- Adjust the boundary of Elk Area 6054 to reduce the area it covers
 - Proposed adjustment will focus harvest in areas where elk conflict is the greatest
- Recommended Adjustment
 - The south and southwest boundary of the elk area will follow the Nisqually River instead of State Route 706, Highway 7, and Alder Lake Park Road.
- Received 2 neutral comments on the proposal

Elk Area 6054



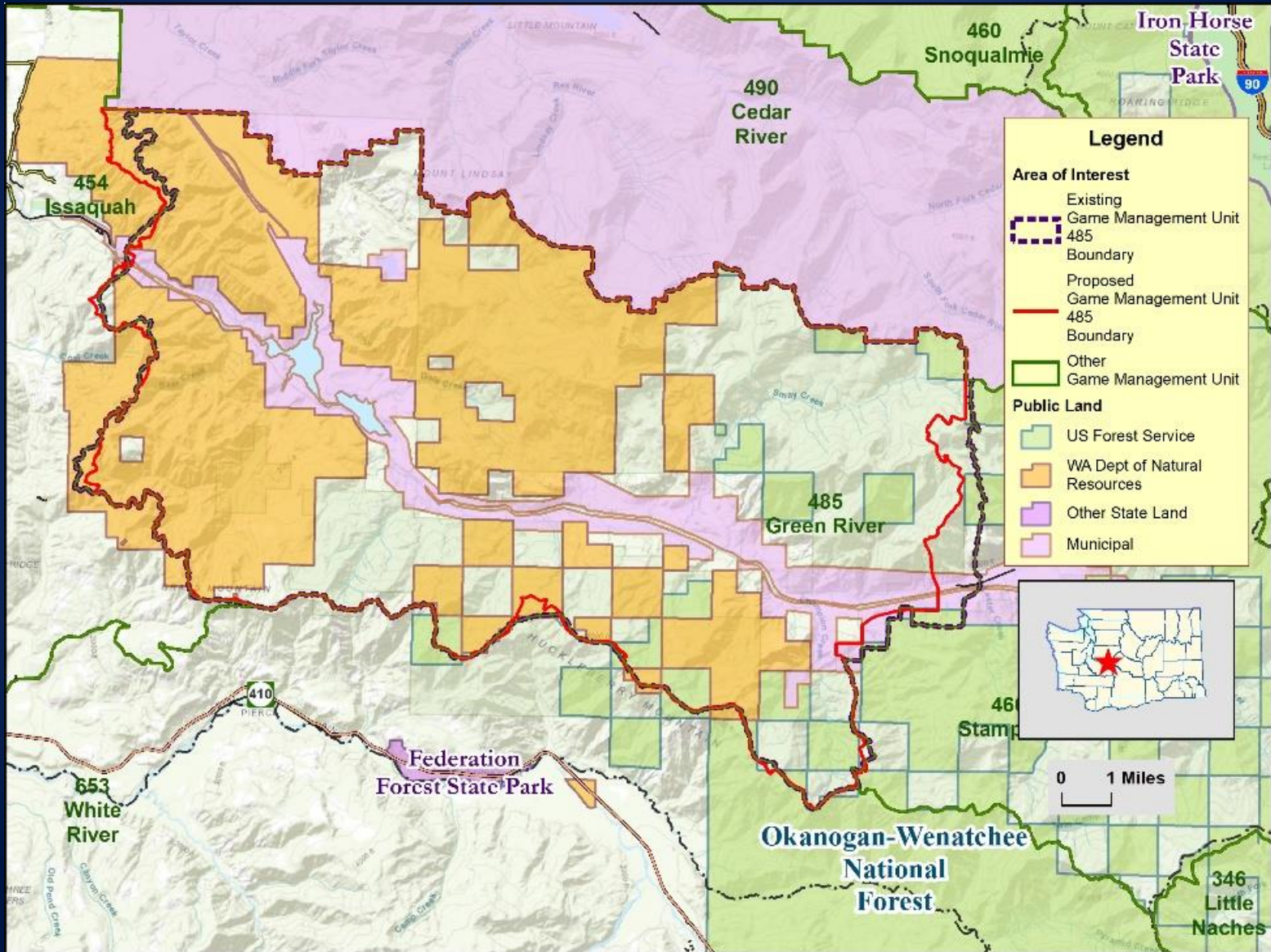
GMU Boundary Descriptions – Region 4

WAC 220-410-040 and Region 6

WAC 220-410-060

- Propose adjusting GMU 485 (Green River) boundary to align with the controlled access portion of the city of Tacoma Green River Watershed
- Proposed adjustment would alleviate trespass and hunting enforcement issues
- Proposed language jointly developed with Tacoma Water and supported by the Muckleshoot Indian Tribe
- Necessitates changes to boundary language for neighboring GMUs (454, 466, 653)

GMU 485



Special Closures and Firearm Restriction Areas

WAC 220-413-180

- Propose clarifying that firearm restrictions in portions of Gray Harbor and Pacific counties only apply during modern firearm general deer and/or elk seasons
 - Current language does not make it clear these restrictions do not apply during permit seasons or during seasons established to mitigate elk damage
- Clarify Key Peninsula and Longbranch Peninsula are the same place
- 1 supporting, 2 opposed, and 1 neutral comment

Questions?



WAC 220-414-070

Archery Requirements



Washington Department of
FISH and WILDLIFE

Brock Hoenes

Deer and Elk Section Manager, Game Division
Wildlife Program

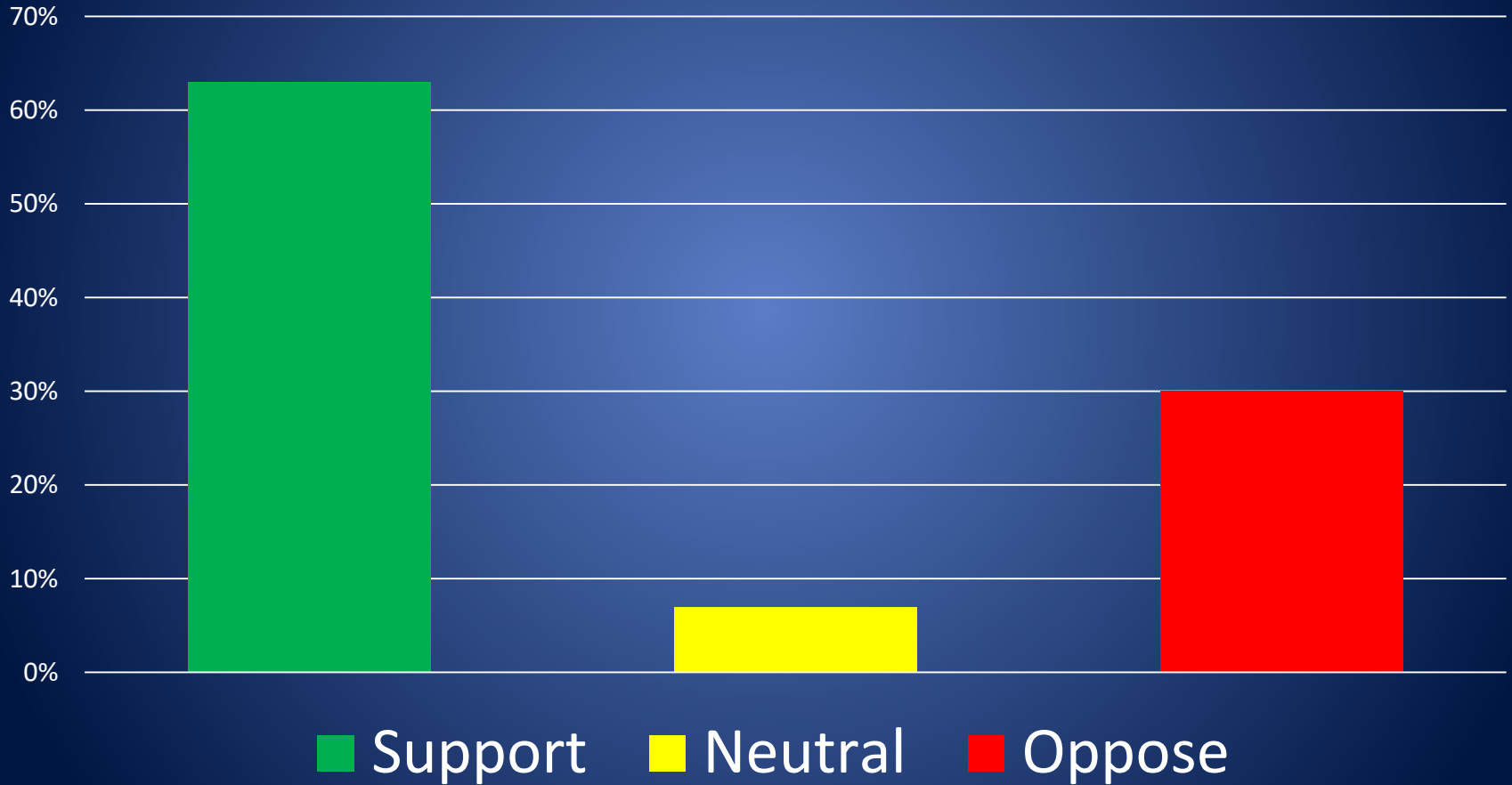
Archery Requirements

WAC 220-414-070

- Propose to eliminate minimum arrow weight restrictions
 - Current rule requires hunters to use an arrow that weighs six grains per pound of draw weight with a minimum weight of 300 grains
 - Commission was petitioned in July 2018 to change this rule, Game Division reviewed the request and agrees
 - Washington is only state that has a minimum arrow weight to draw weight ratio
 - Only one of five states that has a similar regulation of minimum overall weight of 300 grains
 - Very likely archery hunters are unknowingly in violation of current rule

Public Input Archery Requirements

Percent Response (n = 27)



Questions?

