

**WACs 220-415-050 & 220-415-060**

# **Elk General Seasons and Elk Special Permits**



*Washington Department of*  
**FISH and WILDLIFE**

**Brock Hoenes**

**Deer and Elk Section Manager, Game Division  
Wildlife Program**

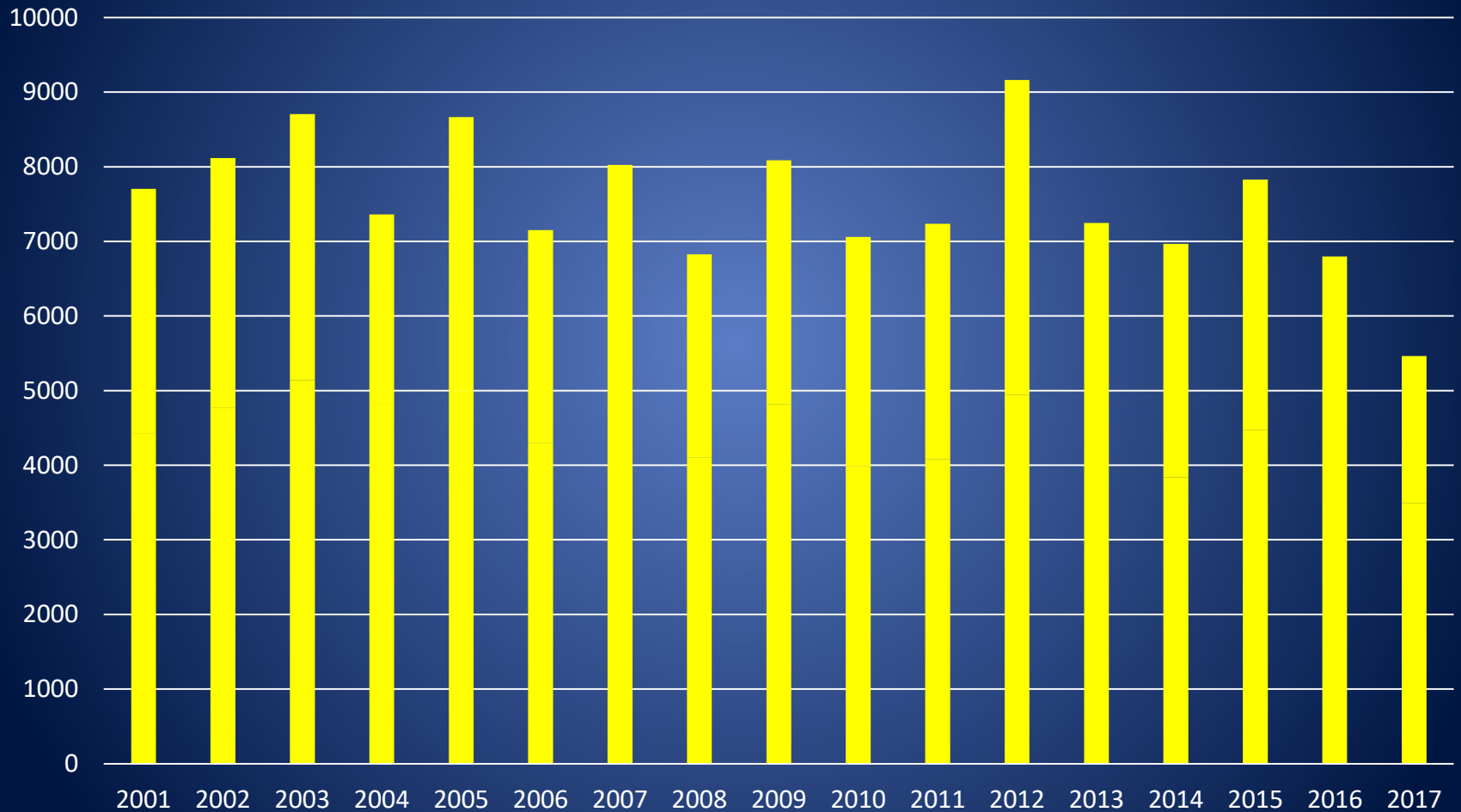
# Elk Herd Status

- Elk surveys have not been conducted at the time of this presentation development
- Conditions that have impacted eastern Washington include the summer 2015 drought and above average winters in 2015-16 and 2016-2017

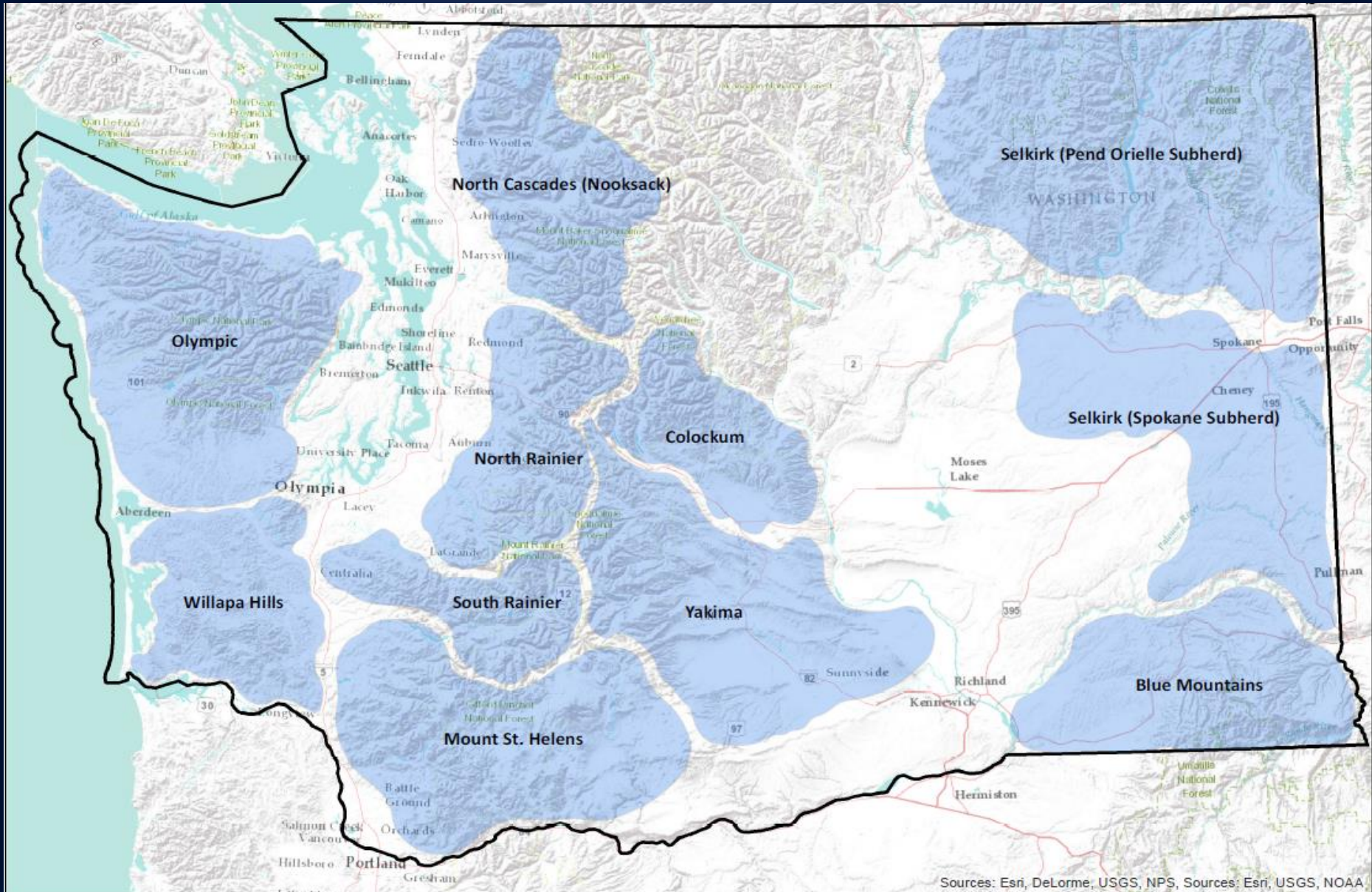


# Elk Harvest 2001 to 2017

General Season and Special Permit Combined

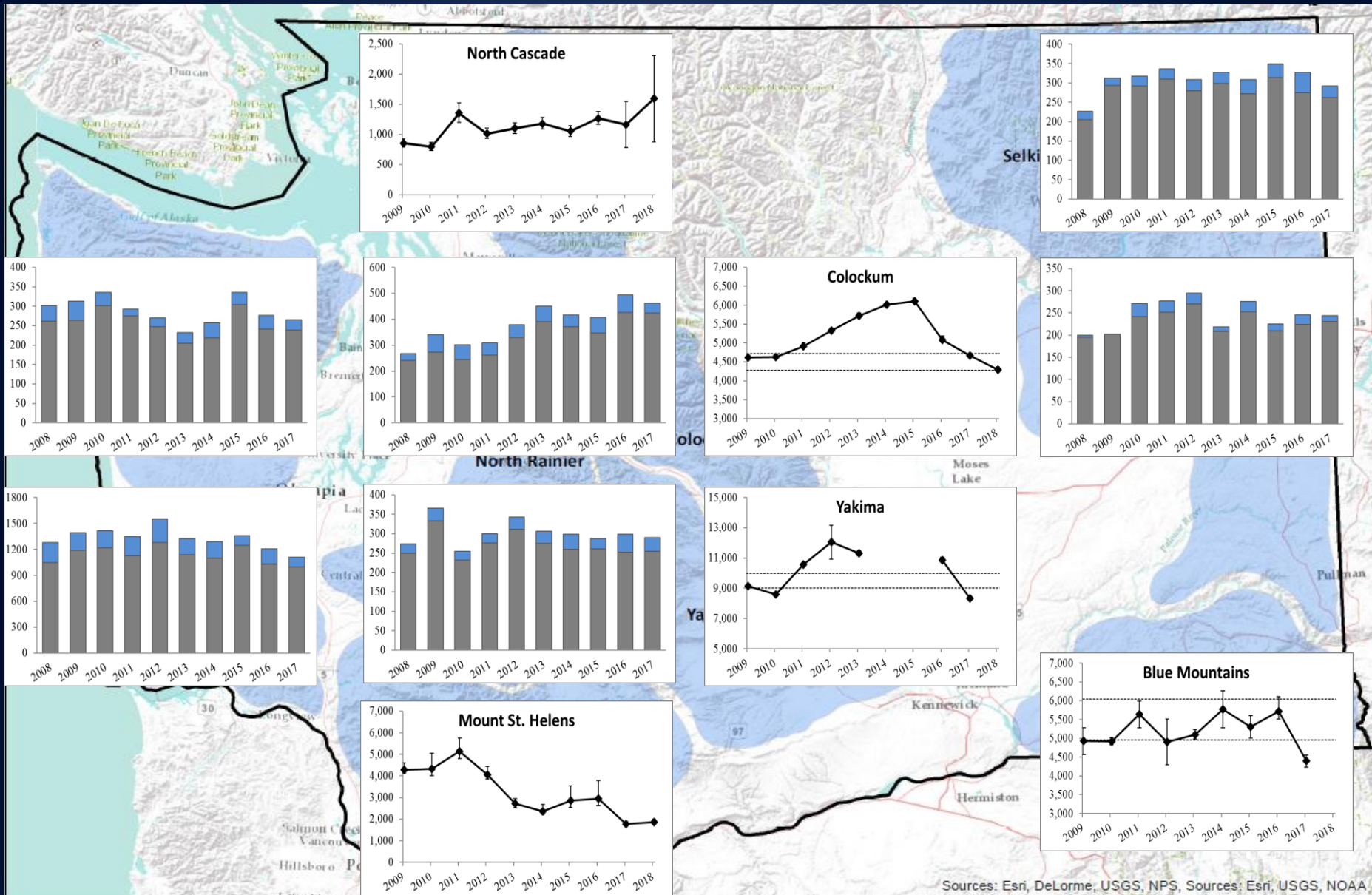


# Elk Herd Status



Sources: Esri, DeLorme, USGS, NPS, Sources: Esri, USGS, NOAA

# Elk Herd Status



Sources: Esri, DeLorme, USGS, NPS, Sources: Esri, USGS, NOAA

# Elk General Season Proposals

## WAC 220-415-050

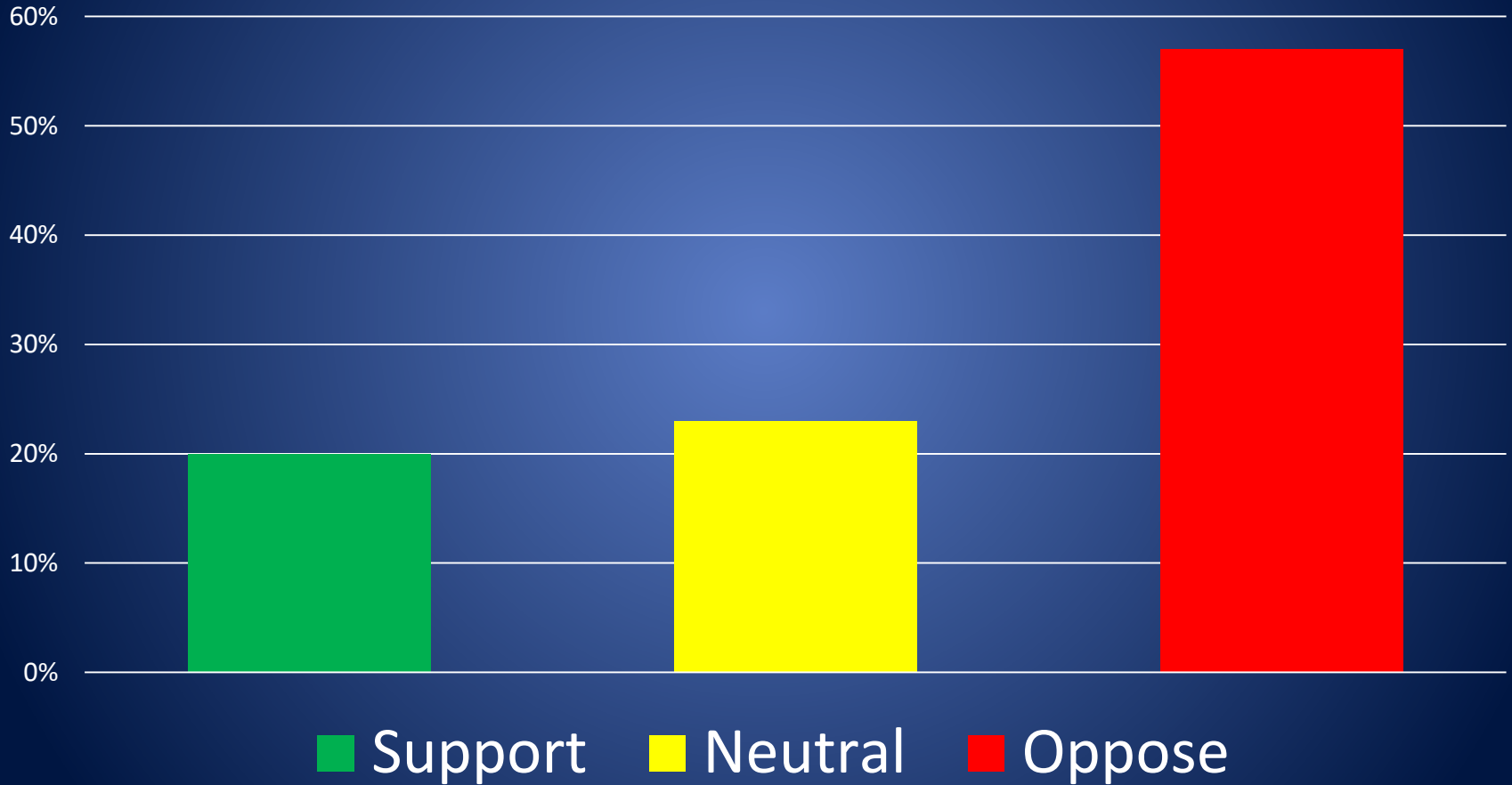
- Second year of a 3-year package
- No major changes proposed
- Add early archery Any elk opportunity and early muzzleloader 3 pt. Min. or antlerless opportunities in EA 6014 to help mitigate damage issues
- Shift legal elk for early archery in GMU 652 from Any elk to 3 pt. min. or antlerless
- Allow opportunities to harvest antlered elk in EA 6013 during early and late archery

# Elk General Seasons Continued

- Shift the legal elk for early muzzleloader in GMU 505 from 3 pt. min. to 3 pt. min. or antlerless to help mitigate damage
- Shift the legal elk for late muzzleloader in GMU 667 from 3 pt. min. to 3 pt. min. or antlerless and reduce the season length by 7 days
- Maintain a placeholder for an early archery general elk season in the Colockum and Yakima elk herd areas until 2018 harvest estimates and 2019 spring survey data are available

# Public Input Elk General Seasons

Percent Response (n = 30)





# Questions?

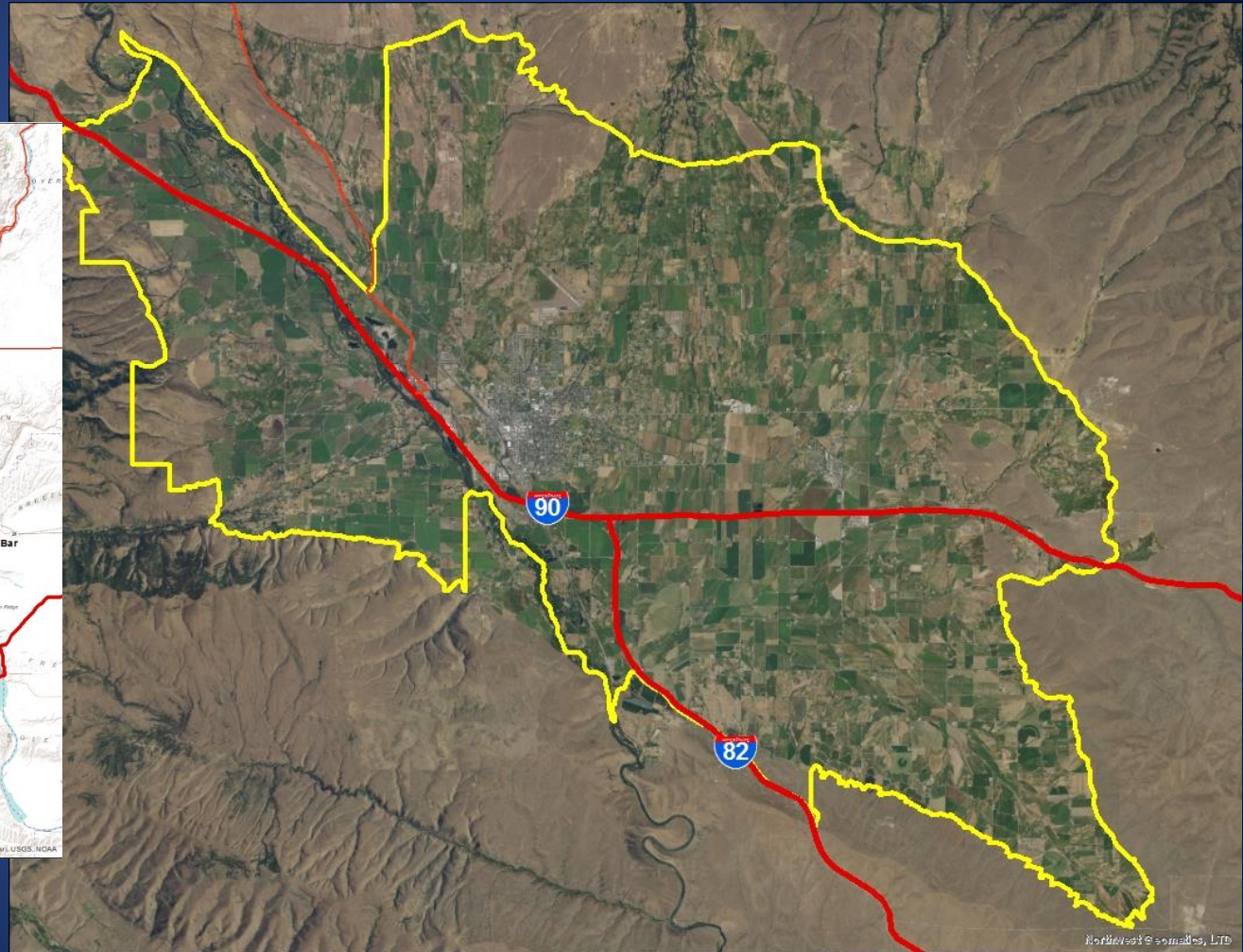
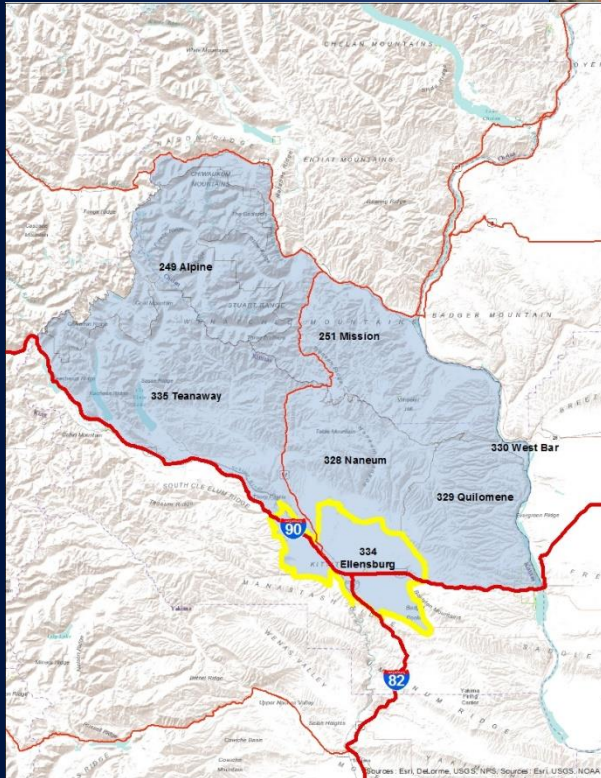


# Elk Permit Seasons

## WAC 220-415-060

- No major changes proposed
- Quality special permits were adjusted through the special permit allocation process and reduced in the Yakima, Colockum, and Blue Mountains herds
- Adjusted antlerless special permits up or down with the goal of maintaining herds at objective or moving them toward population objective
- Add quality special permit opportunities in GMU 334 in conjunction with existing opportunities in the Colockum and Yakima herd areas

# GMU 334 (Ellensburg)



NorthwestGIS.com LLC, LTD

# GMU 334 (Ellensburg)

- The Department limits elk numbers within GMU 334 by offering opportunities to harvest spike (or true spike) bulls and antlerless elk during general seasons
- Currently no opportunities for recreational hunters to harvest branch-antlered bulls
- The number of branch-antlered bulls has steadily increased and are frequently the source of damage complaints
- The Department is also proposing to add opportunities in GMU 334 for auction, raffle, and special incentive permits
- Opportunities to harvest branch-antlered bulls would:
  - Reduce the number of branch-antlered bulls
  - Reduce human-elk conflicts
  - Provide additional opportunities for hunters

# Permit Seasons Continued

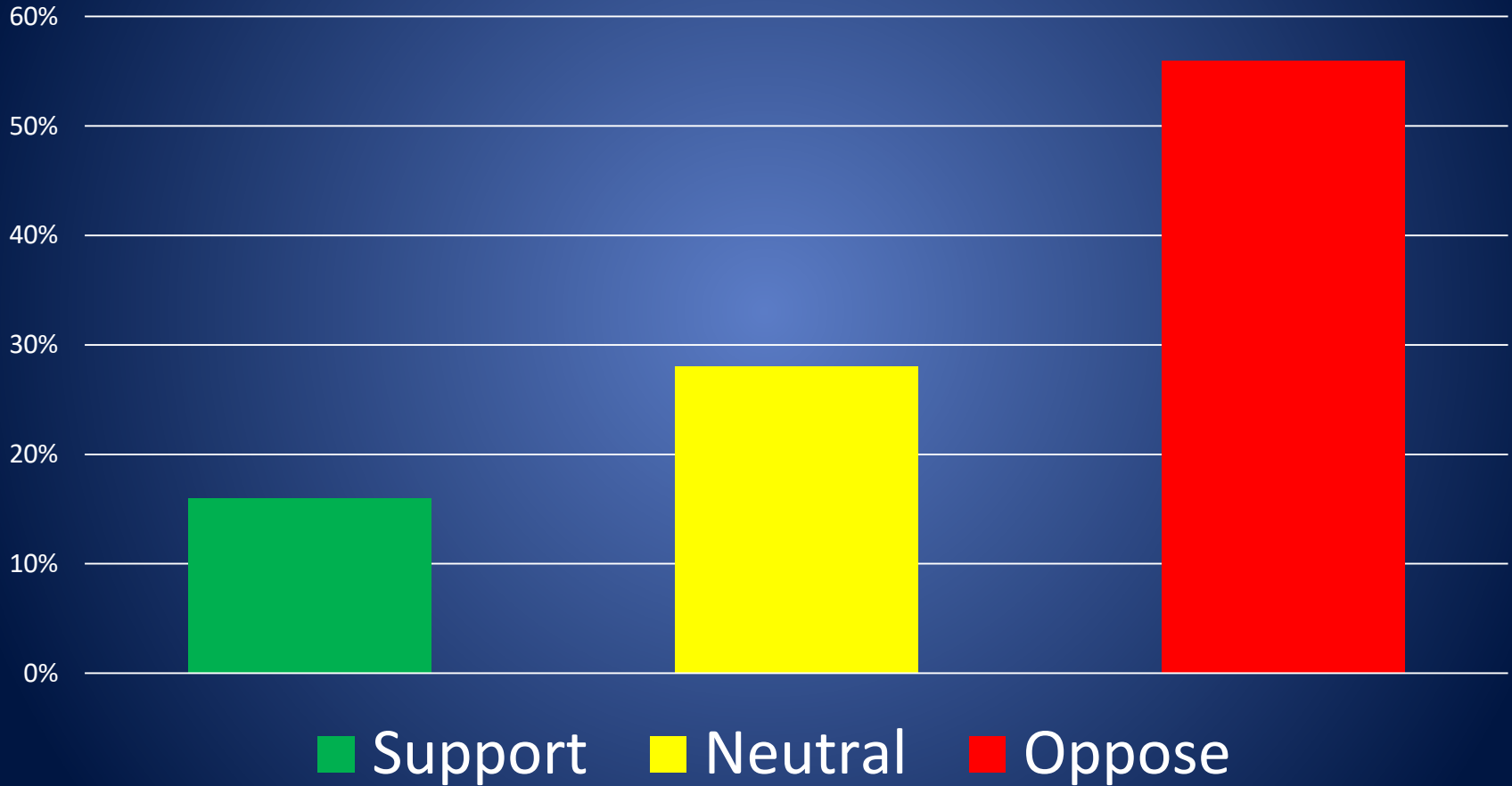
- Add modern firearm, archery, and muzzleloader special bull permits and Youth special permits for Spike bull only in EA 1015 to compensate for reduced antlerless permits
- Expand Youth special permits for Designated Areas in Region 5 to include holders of a muzzleloader or archery transport tag
- Eliminate Antlerless permit hunts for Disabled and 65+ Senior hunters in EA 6011

# Supplemental Recommended Adjustments Elk Permit Seasons

- Page 8: Under the Bulls category; update the legal hunt boundary for Alkali, Muzzleloader (EM), to include GMU 334.
- Page 18: Under the Hunters with Disabilities category; update the legal hunt boundary for Alkali, (EF, EM, EA), to include GMU 334.

# Public Input Elk Special Permits

Percent Response (n = 32)



# Questions?

