

**WACs 220-415-040, 220-410-040, 220-410-060,  
220-413-180, and 220-414-070**

## **Hunting Boundaries and Archery Requirements**



*Washington Department of*  
**FISH and WILDLIFE**

**Brock Hoenes**

**Deer and Elk Section Manager, Game Division  
Wildlife Program**

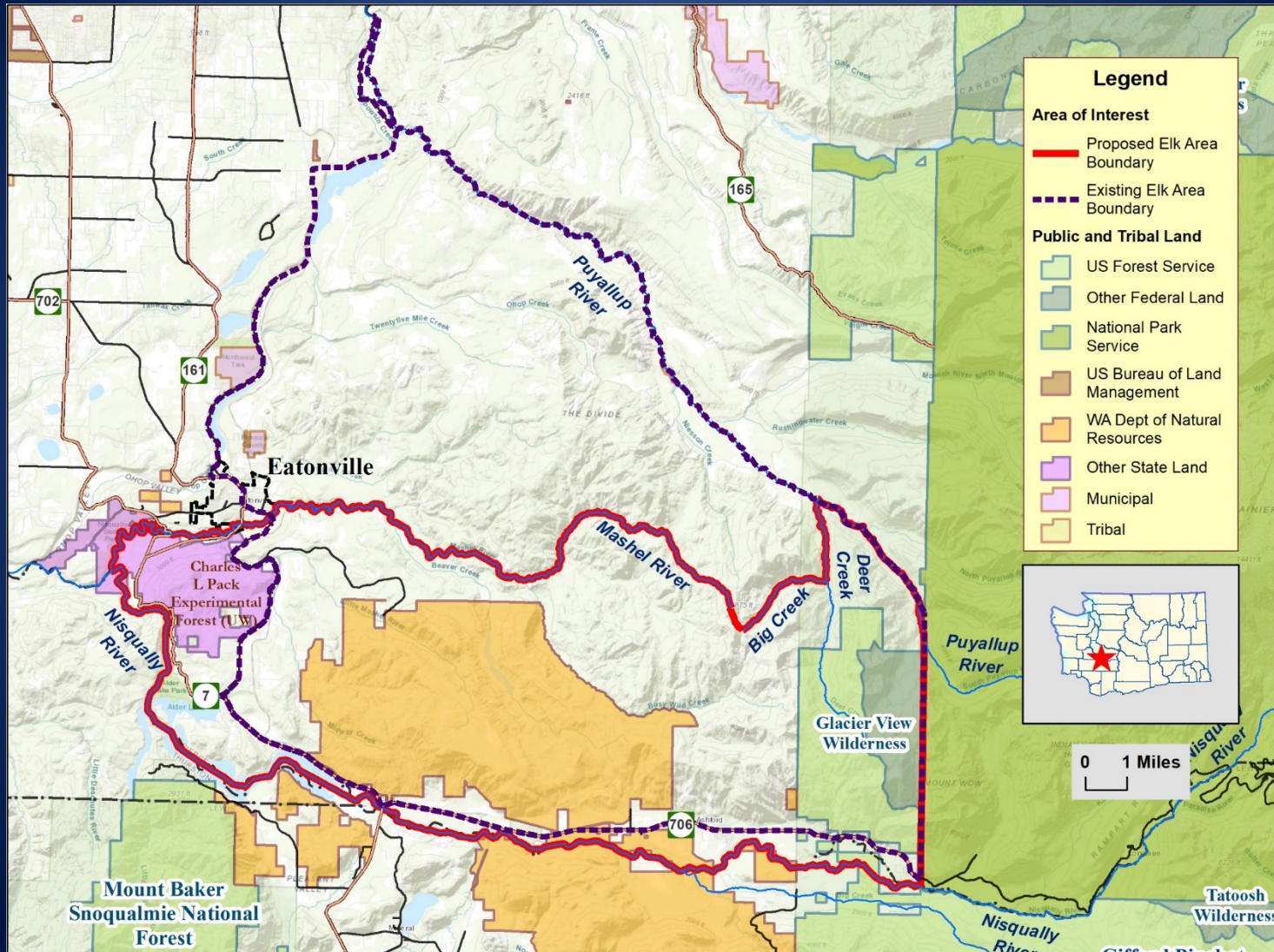
# Elk Area Descriptions

## WAC 220-415-040

- Proposed adjusting the boundary of Elk Area 6054 to reduce the area it covers, with the goal of focusing harvest in areas where elk conflict is the greatest



# Elk Area 6054



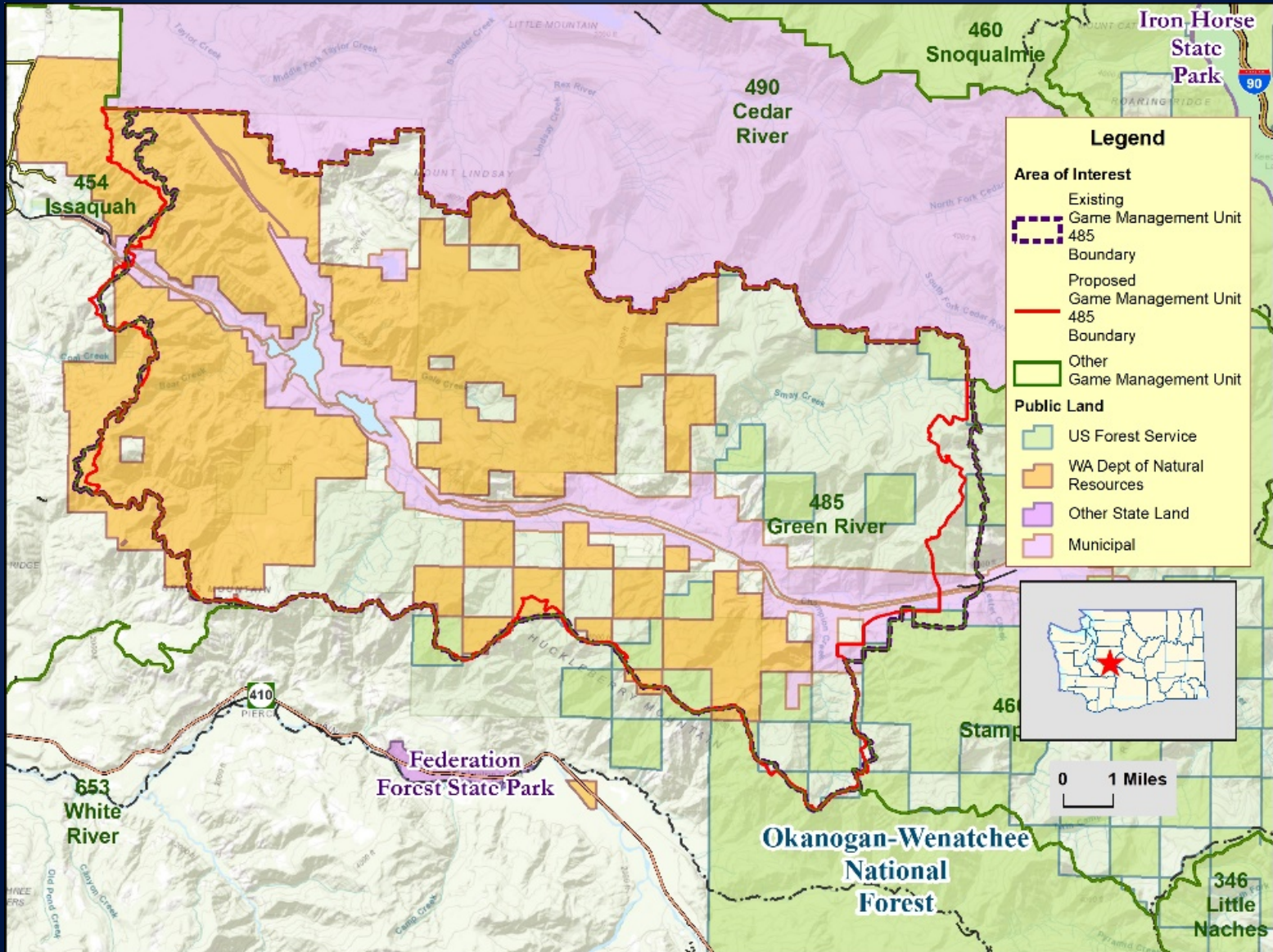
# GMU Boundary Descriptions – Region 4

## WAC 220-410-040 and Region 6

### WAC 220-410-060

- Proposed adjusting GMU 485 (Green River) boundary to align with the controlled access portion of the city of Tacoma Green River Watershed
- Proposed adjustment would alleviate trespass and hunting enforcement issues
- Necessitates changes to boundary language for neighboring GMUs (454, 466, 653)

# GMU 485



# Special Closures and Firearm Restriction Areas

## WAC 220-413-180

- Proposed adjustments are administrative changes that clarify:
  - 1) firearm restrictions in portions of Gray Harbor and Pacific counties only apply during modern firearm general deer and/or elk seasons

and

- 2) Key Peninsula and Longbranch Peninsula in Pierce County refer to the same place

# Questions?



# Archery Requirements

## WAC 220-414-070

- Proposed to eliminate minimum arrow weight restrictions
- Current rule requires hunters to use an arrow that weighs six grains per pound of draw weight with a minimum weight of 300 grains
- Washington is only state that has a minimum arrow weight to draw weight ratio
- Only one of five states that has a similar regulation of minimum overall weight of 300 grains



# Questions?



# Motion Language

- I move to adopt WACs 220-415-040, 220-410-040, 220-410-060, 220-413-180, and 220-414-070 as presented.