

WAC 220-415-120
Bighorn Sheep Seasons 2019
WAC 220-412-070
Auction-Raffle Special Permits



Washington Department of
FISH and WILDLIFE

Rich Harris, Ph.D.
Bighorn Sheep, Moose, Mountain Goat, and Pronghorn
Antelope Section Manager, Game Division
Wildlife Program

Bighorn Sheep

- Minor revisions in ram permit levels
- Deliberate herd reduction in Yakima Canyon to assist program designed to remove pneumonia pathogen





GMU open in 2018

Wenaha
 Bighorn herd shared with Oregon; Umatilla Tribe also has hunting rights – will rotate access

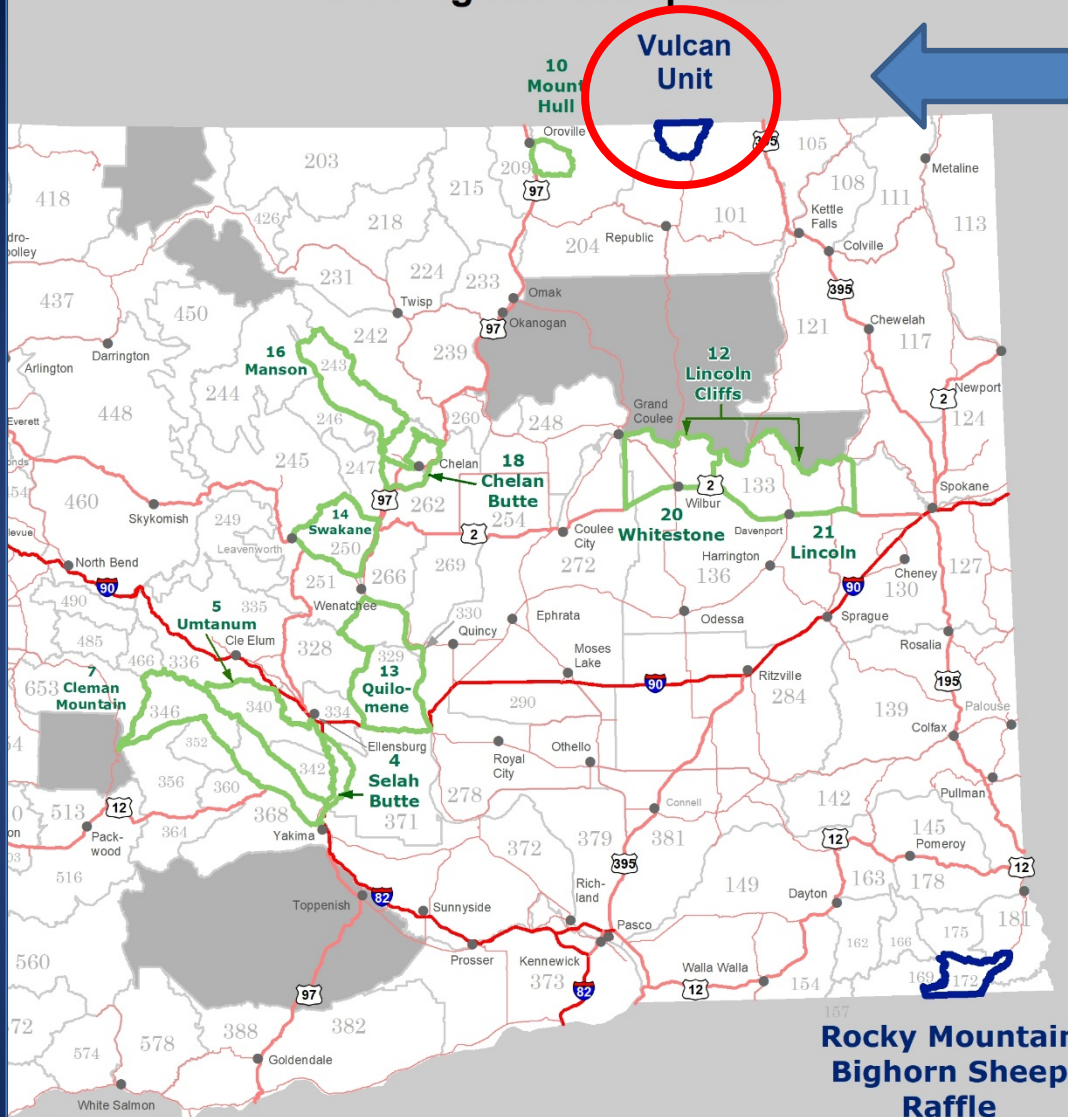


GMU proposed for 2019

Mountain view

2019 Bighorn Sheep Units

Vulcan Mtn herd

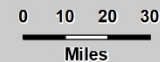


Population Growing slowly
 Good number of Rams:
 Add 1 ram permit (CCT will also)

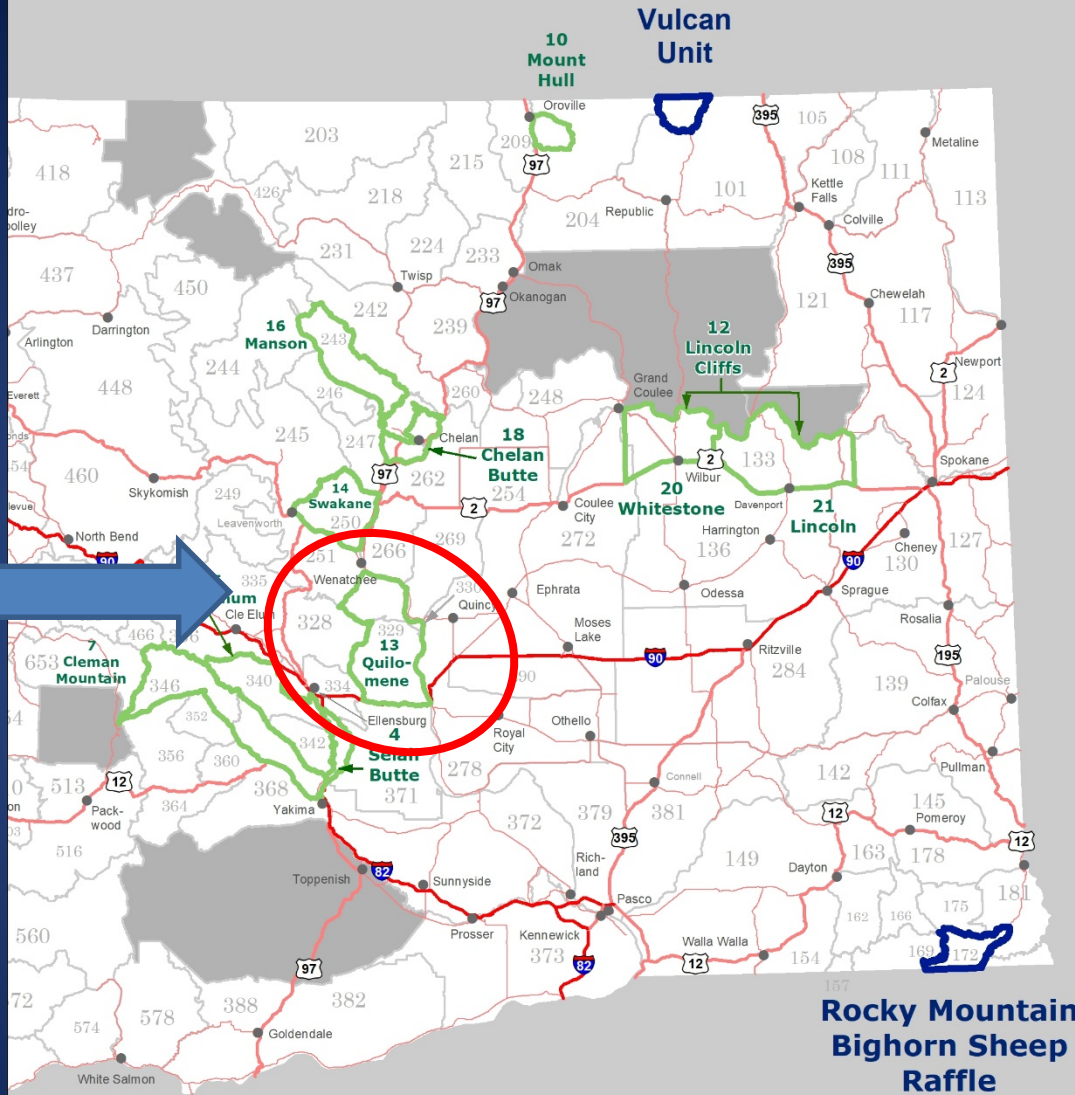
Rocky Mountain Bighorn Sheep Raffle

- Administrative Boundaries**
- ▬ 2019 Bighorn Sheep Unit
 - ▬ 2018 and 2019 Bighorn Sheep Unit
 - City or Town
 - ▭ Land Outside WDFW Jurisdiction

- Transportation Network**
- ▬ Interstate Highway
 - ▬ US Highway
 - ▬ State Route



2019 Bighorn Sheep Units



Growing:
Increase ram
harvest
opportunity

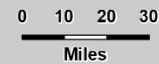
Quilomene
herd

Administrative Boundaries

- 2019 Bighorn Sheep Unit
- 2018 and 2019 Bighorn Sheep Unit
- City or Town
- Land Outside WDFW Jurisdiction

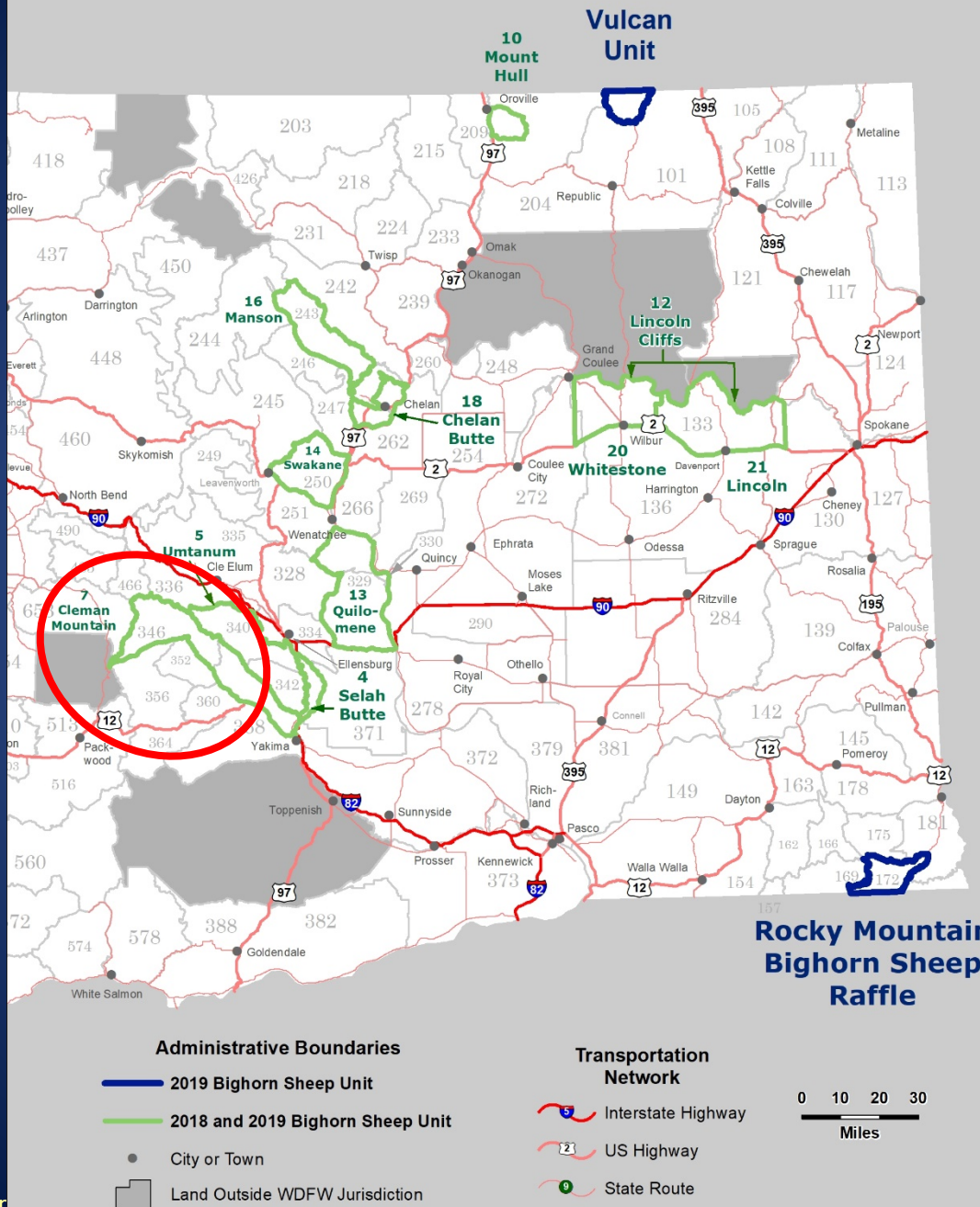
Transportation Network

- Interstate Highway
- US Highway
- State Route



**Rocky Mountain
Bighorn Sheep
Raffle**

2019 Bighorn Sheep Units



Still over-abundant
Increase ram harvest opportunity



Ewe harvest reduction in your packet was premised on exporting sheep to Utah: weather didn't cooperate, so restore these ewe permits

Cleman Herd

Rocky Mountain Bighorn Sheep Raffle

Bighorn sheep pneumonia



- Mortality in all-age outbreaks is highly variable
- Disease can persist for decades in the form of low recruitment due to pneumonia in lambs: also highly variable
- The result is often small (<100 sheep), stable to declining, populations
- Most animals in these populations test negative for respiratory disease pathogens

Slide courtesy of F. Cassirer

Test and Cull



- Capture and test 95% of the herd and remove any individual testing positive (infectious or carriers) for *Mycoplasma ovipneumoniae*
- Repeat in subsequent years if necessary

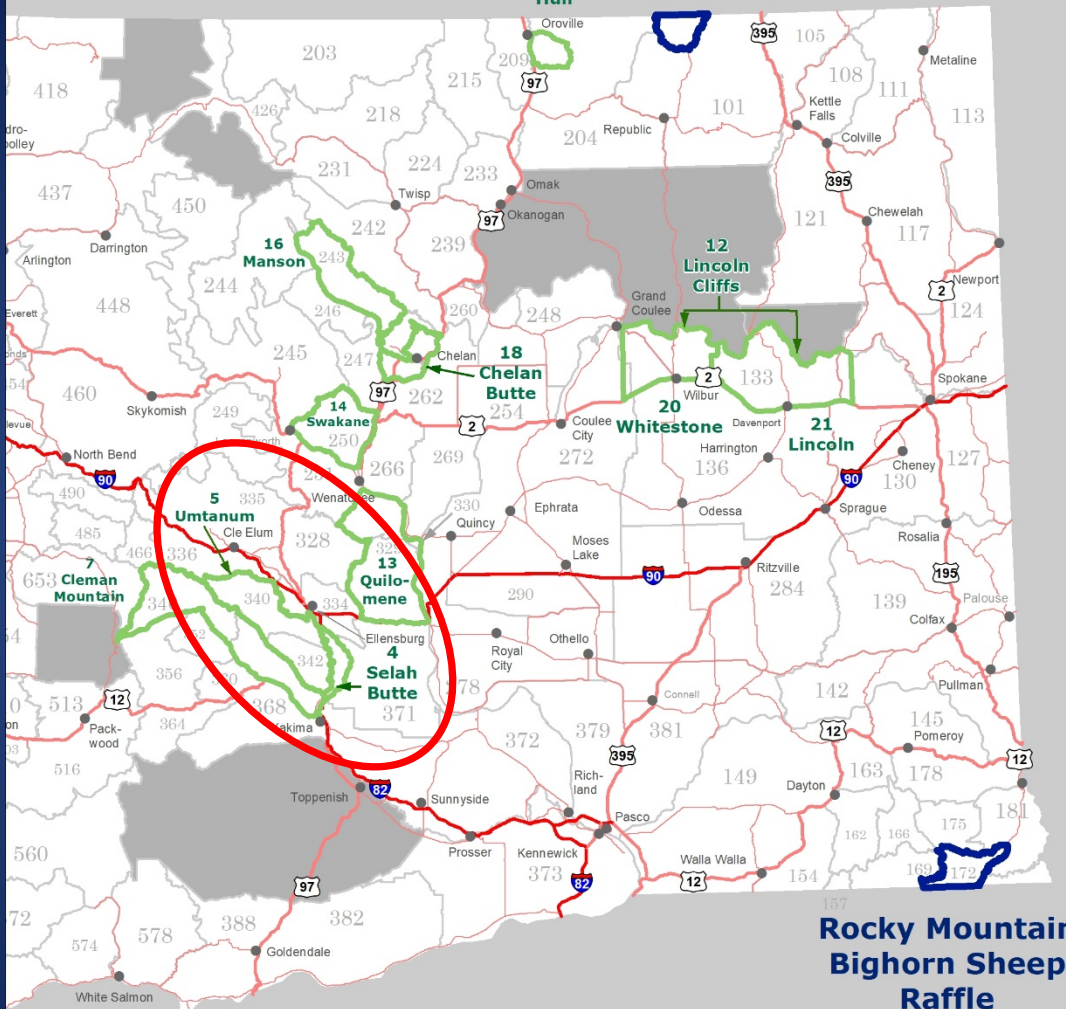
Test and Cull

- Evidently has been successful in:
 - Captive population at South Dakota State
 - Custer State Park, SD (compared with control population with pneumonia)
 - Asotin Herd

All much smaller than Yakima Canyon herd at time of testing/culling

2019 Bighorn Sheep Units

Vulcan Unit



Umtanum/
Selah Butte
(aka
"Yakima Canyon")

Increase
ram
permits
from 2 to
4, both
sides of
Yakima
River

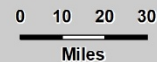
Rocky Mountain
Bighorn Sheep
Raffle

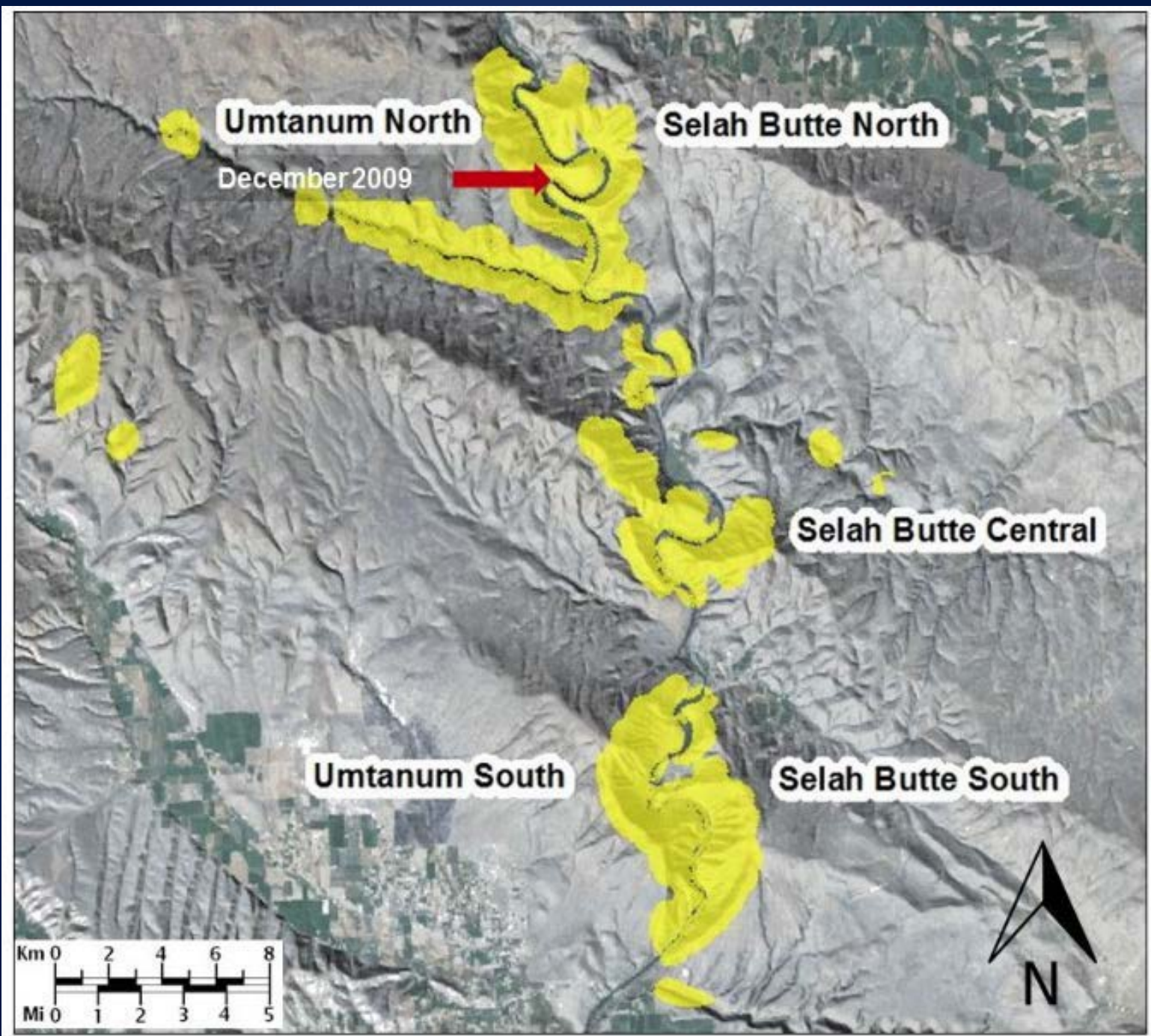
Administrative Boundaries

- ▬ 2019 Bighorn Sheep Unit
- ▬ 2018 and 2019 Bighorn Sheep Unit
- City or Town
- ▭ Land Outside WDFW Jurisdiction

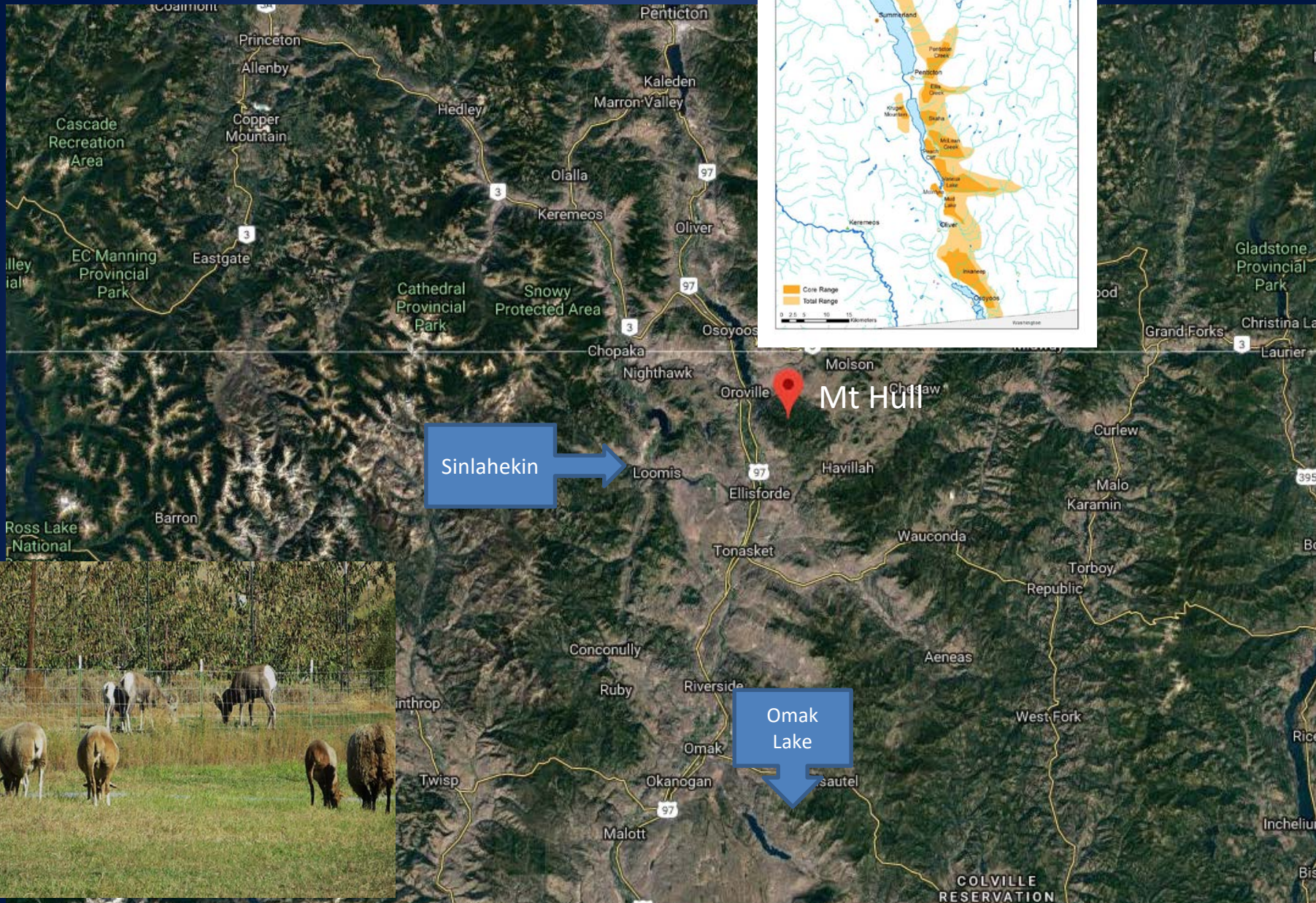
Transportation Network

- ▬ Interstate Highway
- ▬ US Highway
- ▬ State Route





Mt. Hull – pneumonia concern



Public Comments

Supporting Comments

- Three supported the proposed changes

Opposing, Neutral, and Other Comments

- One opposed any reduction in the number of permits in deference to predator populations
- Others were not clear about the rationale for increasing ewe harvest opportunity

Questions?

