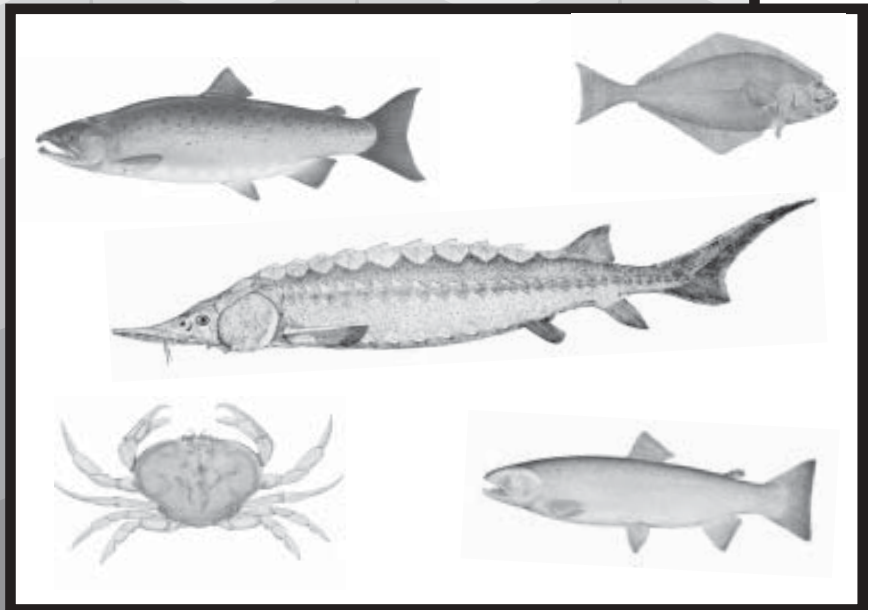


Washington State Sport Catch Report 2000



by Terrie Manning and Sheila Smith



Washington Department of
FISH AND WILDLIFE
Fish Program
Science Division

WASHINGTON STATE SPORT CATCH REPORT 2000

by

Terrie Manning
Sheila Smith

State of Washington
Gary Locke, Governor

Washington State Department of Fish and Wildlife
Dr. Jeff P. Koenings, Director

Fish Program
Lew Atkins, Assistant Director

Department of Fish and Wildlife
Science Division
600 Capitol Way N
Olympia, Washington 98501



April 2004



ACKNOWLEDGEMENTS

Many Department of Fish and Wildlife biologists and program staff contributed to the compilation and editing of this report. Thanks go to the staff in Licensing, Information Systems, Print Shop, Word Processing Unit, and Fish Management. Special thanks are due to Lynette Bounds, Christina Kruse, Susan Markey, Kate McClain, Mike Monroe, Deb Naylor, Jair Reitsma, Justin Secrist and Heather Weber.

TABLE OF CONTENTS

List of Tables	ii
Introduction	1
Sport Licenses	7
Salmon	11
Map of Salmon Catch Record Card Areas	12
Description of Salmon Catch Record Card Areas	13
Sturgeon	43
Map of Sturgeon Catch Record Card Areas	44
Description of Sturgeon Catch Record Card Areas	45
Steelhead	53
Marine Fish	85
Shellfish	89

LIST OF TABLES

SPORT LICENSES

Table 1.	Number and Value of Sport Fishing Licenses Sold in Washington in the 2000-2001 Fishing Year	8
Table 2.	Number of Sport Salmon Catch Record Cards Issued	9
Table 3.	Number of Sport Sturgeon Catch Record Cards Issued	9
Table 4.	Number of Sport Steelhead Catch Record Cards Issued	10

SALMON

Table 5.	Annual Sport Salmon Catch, 1971 – 2000	14
Table 6.	2000-2001 Total Sport Salmon Catch	15
Table 7.	2000-2001 Sport Salmon Marine Catch, Area 1 – Ilwaco: Ocean	16
Table 8.	2000-2001 Sport Salmon Marine Catch, Area 1 – Ilwaco: Buoy 10	16
Table 9.	2000-2001 Sport Salmon Marine Catch, Area 2 – Westport	17
Table 10.	2000-2001 Sport Salmon Marine Catch, Area 2.1 – Willapa Bay	17
Table 11.	2000-2001 Sport Salmon Marine Catch, Area 2.2 – Grays Harbor	18
Table 12.	2000-2001 Sport Salmon Marine Catch, Area 3 – LaPush	18
Table 13.	2000-2001 Sport Salmon Marine Catch, Area 4 – Neah Bay	19
Table 14.	2000-2001 Sport Salmon Marine Catch, Area 5 – Sekiu – Pillar Point	20
Table 15.	2000-2001 Sport Salmon Marine Catch, Area 6 – East Juan de Fuca Strait	20
Table 16.	2000-2001 Sport Salmon Marine Catch, Area 7 – San Juan Islands	21
Table 17.	2000-2001 Sport Salmon Marine Catch, Area 8.1 – Deception Pass / Hope Island	21
Table 18.	2000-2001 Sport Salmon Marine Catch, Area 8.2 – Port Susan / Port Gardner	22
Table 19.	2000-2001 Sport Salmon Marine Catch, Area 9 – Admiralty Inlet	22
Table 20.	2000-2001 Sport Salmon Marine Catch, Area 10 – Seattle / Bremerton	23
Table 21.	2000-2001 Sport Salmon Marine Catch, Area 11 – Tacoma / Vashon Island	23
Table 22.	2000-2001 Sport Salmon Marine Catch, Area 12 – Hood Canal	24
Table 23.	2000-2001 Sport Salmon Marine Catch, Area 13 – South Puget Sound	25
Table 24.	2000-2001 Sport Salmon Marine Catch, Puget Sound Special Area Fisheries	25
Table 25.	2000-2001 Sport Freshwater Catch, By Area and Month	26
Table 25A.	2000-2001 Sport Salmon Catch, Unknown Area by Month	38
Table 26.	2000-2001 Washington Sport Salmon Fishing, By Residence	39
Table 27.	2000-2001 Frequency Distribution of Salmon Cards and Catch	40
Table 28A.	2000-2001 Sport Salmon Technical Catch Data	41
Table 28B.	2000-2001 Inventory of Salmon Catch Record Cards Received	41

STURGEON

Table 29.	2000-2001 Sport Sturgeon Catch	46
Table 30.	2000-2001 Sport Sturgeon Fishing, By Residence	50
Table 31.	2000-2001 Frequency Distribution of Sturgeon Cards and Catch	51
Table 32A.	2000-2001 Sturgeon Technical Catch Data	52
Table 32B.	2000-2001 Inventory of Sturgeon Catch Record Cards	52

STEELHEAD

Table 33.	2000-2001 Sport Steelhead Catch	54
Table 34.	2000-2001 Sport Steelhead Fishing, By Residence	82
Table 35.	2000-2001 Frequency Distribution of Steelhead Cards and Catch	83
Table 36A.	2000-2001 Sport Steelhead Technical Catch Data	84
Table 36B.	2000-2001 Inventory of Steelhead Catch Record Cards Received	84

MARINE FISH

Table 37.	2000 Coastal Sport Bottomfish Catch	86
Table 38.	2000 Washington Sport Pacific Halibut Catch	86
Table 39.	2000 Sport Bottomfish Catch By Boat-Based Anglers in Puget Sound	87

SHELLFISH

Table 40.	2000-2001 Seasonal Summary of Sport Razor Clam Digging on the Ocean Beaches	90
Table 41.	2000 Recreational Use and Harvest Estimates From Intertidal Areas East of Dungeness Spit	91
Table 42.	2000 Hood Canal Sport Shrimp Fishery	93
Table 43.	2000-2001 Sport Crab Pot Fishery	93

"Various images were used from the National Oceanic and Atmospheric Administration, National Marine Fisheries Service, Alaska Fisheries Science Center, National Marine Mammal Laboratory and the United States Fish and Wildlife Service."

INTRODUCTION

The Washington State Sport Catch Report was first published in 1967. The report originally provided salmon catch estimates, which were and still are based on data from catch record cards (punch cards). Beginning in 1975, marine fish sport harvest estimates were reported in the sport catch report. In 1976, shellfish sport harvest was added. Marine fish and intertidal shellfish sport harvest estimates are based on field and creel surveys. In 1994, steelhead sport harvest estimates, from catch record cards, were added to the report. Now, catch record card data are collected for salmon, sturgeon, steelhead, Dungeness crab and halibut and supplemented with field or creel survey data or telephone surveys where and when possible to improve recreational harvest estimate accuracy. The sport harvest estimates for salmon, steelhead, sturgeon, marine fish and shellfish are produced at varying times of each year. For this reason, coupled with an increase in the number of catch record cards issued, budget, and staffing constraints, the 2000 edition of the Washington State Sport Catch Report is being published in April 2004.

The 2000 sport estimates reflect harvest from April 1, 2000, through March 31, 2001. Historically salmon, sturgeon, halibut, marine fish and shellfish estimates were made on a calendar year basis from January 1 through December 31. Steelhead estimates were summarized from May 1 through the next April 30 to better capture the results of steelhead “run years”. Effective January 1, 1999, the sport license system adopted an April 1 to March 31 license year for all species. To adjust to the new reporting time frames, the 1999 sport report included 15 months of salmon and sturgeon catch and 11 months of steelhead catch (May 1, 1999 – March 31, 2000). When comparing past years’ sport harvest estimate tables to 1999 and 2000 tables, please note the changes in the license structure and reporting year as described above.

SPORT LICENSES AND CATCH RECORD CARDS

In 2000, the following licenses and catch record cards were required to fish in Washington:

- A **saltwater license** was required for resident anglers 15 years of age and over, and for all non-resident anglers. This license allowed the holder to fish for any fish existing in saltwater. This license was available in resident annual, resident senior (ages 70 and over), and non-resident annual. In addition, a free **catch record card** was required of all anglers of all ages to fish for salmon, steelhead, for halibut in Puget Sound and the Strait of Juan de Fuca, and for sturgeon in the Columbia River, Grays Harbor, Willapa Bay and all tributaries of these three systems.
- A **freshwater license** was required for resident anglers 15 years of age and over, and for all non-resident anglers, to fish for any fish species existing in freshwater. This license was available in resident annual, resident senior (ages 70 and over), and non-resident annual. A free **catch record card** was also required of anglers of all ages to fish for salmon, steelhead and for sturgeon in Columbia River, Grays Harbor, Willapa Bay and all tributaries of these three systems.

- A **shellfish/seaweed license** was required for resident and non-resident harvesters 15 years of age and older. This license allowed the holder to fish for crab, gooseneck barnacles, mussels, octopus, scallops, oysters, razor clams, sea cucumbers, softshell and hardshell clams, squid and seaweed. Since Dungeness crab was added to the catch record card, a free catch record card was required of all crabbers of all ages to fish for Dungeness crab.
- A **combination license** was required for annual and two-day resident and non-resident harvesters 15 years of age and older to participate in all three of the above fishing activities.

Catch record cards were significantly changed beginning in 2000. Previously, separate cards were issued for each species group: salmon, sturgeon, steelhead, or halibut. In 2000, these four species groups plus Dungeness crab were combined onto one card record document. A catch record card was issued at no charge to anyone wishing to fish for any of these groups.

Table 1 shows license sales from April 1, 2000 to March 31, 2001, based on a direct count of sales. Tables 2, 3 and 4 show the estimated number of salmon, sturgeon and steelhead catch record cards issued. Note that the number of catch record cards issued shown in these tables are estimated from the catch record card databases, therefore cannot be directly compared to the license sales number. These numbers cannot be compared since anglers under 15 and over 70 are required to obtain a catch record card but not a license. Also, not all dealers returned their catch record card stubs, nor did all anglers return their catch record cards, therefore, correction factors were applied.

METHODS

Sport harvest estimates are made in Washington State using various methods. These include catch record cards for: salmon and steelhead statewide, sturgeon in the Columbia River, Grays Harbor and Willapa Bay and halibut in Puget Sound and the Strait of Juan de Fuca. Estimates from catch record cards are available six months to one year after the end of the season. Creel, telephone interviews and mail surveys are carried out for salmon, sturgeon, steelhead, halibut, and shellfish in areas where management requires more timely estimates. Creel surveys consist of checking anglers who are exiting the fishery and asking specific questions about catch and effort. The creel survey estimates for some species and areas are substituted for catch record card estimates (this is noted in the tables).

The sport catch record card is used to produce the annual sport harvest estimates for salmon, steelhead, sturgeon, Dungeness crab, and halibut. The catch record card is a two-part document consisting of: 1) a card to record catch (CRC) and 2) a corresponding name and address stub (NA). Both parts of the document have the same permit number. Each permit number issued is unique and is the basis for a 25% systematic random sampling. Dealers are required to return the NA and anglers are required to return the CRC. Anglers holding in-sample cards are sent reminders to return their CRC's. Harvest summed from returned in-sample cards is expanded to account for the un-sampled cards (75%) and unreturned cards. A bias adjustment factor is applied in some areas and species to account for successful anglers returning cards at a higher rate than unsuccessful anglers. Creel survey data are substituted for CRC data when available. The preliminary sport harvest estimates are sent to WDFW and Tribal biologists statewide for review. After review comments are compiled and investigated, final sport harvest estimates are prepared and distributed.

The methods used produce estimates of sport harvest, which have some level of uncertainty. This uncertainty, or variance, is estimated and expressed with confidence levels, which are not provided in this report. These variance estimates are available upon request.

OCEAN CATCH DATA

Sport catch data from coastal areas 1 – 4 were reported using “port sampling” (creel survey) catch estimates. Such estimates were derived by monitoring daily landings at four coastal ports: Ilwaco, Westport, LaPush, and Neah Bay. Catch is reported in the area where the fish was caught and not the area where it was landed.

STATISTICAL MONTHS AND STATISTICAL WEEKS

Some catch data (i.e. salmon and bottomfish) are reported using statistical months or statistical weeks. Statistical weeks (defined as Monday-Sunday) are consecutively numbered weeks beginning on January 1st and continuing through week 53 or 54 December 31st. The first and last weeks of any year usually contain less than 7 days. Statistical months are made up of a set number of statistical weeks, which approximate calendar months but do not coincide with calendar month start and end dates. For example, in 2001, the statistical month of January begins January 1st and ends February 4th and the statistical month of February starts on February 5th and ends March 4th. Since some data are reported using statistical months, as opposed to calendar months, some catch may be reported during what appears to be a closed period.

SALMON

Annual sport salmon catch estimates for 1971 through 2000 are shown in Table 5. Between April 1, 2000, and March 31, 2001 a total of **205,147** salmon were caught in marine areas, plus an additional **191,805** salmon in freshwater. The marine totals by species, as shown in Table 6, are: **42,450** chinook; **158,415** coho; **3,826** chum; **35** pink; **388** jacks; and **33** sockeye. Freshwater species breakdowns show: **40,751** chinook; **62,754** coho; **4,410** chum; **51** pink; **62,969** sockeye; **20,695** jacks (all species combined); and **175** unknown salmon species. The unknown area totals are: **1,108** chinook; **2,355** coho; **119** chum; **14** pink; **83** sockeye; **447** jacks; and **102** unknown salmon species.

Catch record cards are used to estimate sport salmon catch in marine and freshwater areas with some exceptions. In marine areas, creel survey estimates were substituted for the catch record card estimates in ocean areas 1-4 (excluding area 2.1 Willapa Bay and area 2.2 Grays Harbor), and in area 5 during August 01-September 30. Area 5 creel survey results are provided in Table 24. In freshwater areas, creel survey estimates were substituted for the catch record card estimates in the Lower Columbia River February – October, Klickitat River April – May, Little White Salmon River in May, and the Wind River May – June. All other estimates are from catch record cards.

STURGEON

On the new combined sport catch record card, sturgeon fishers were required to record their catch statewide. Total sport harvest for 2000 catch areas recorded, based on creel surveys and catch record card returns was **25,067** fish. Of this total, **23,537** white sturgeon and **21** green sturgeon came from the Columbia River and Snake River systems combined (Table 29). Other areas for which sturgeon harvest is reported are the Coast (includes Willapa Bay and Grays Harbor) **1,289** white and **27** green; and Puget Sound **158** white and **35** green sturgeon. For monthly catch information see Table 29.

STEELHEAD

Harvest estimates for sport caught summer and winter steelhead are derived from a random sample of catch record cards and from anglers throughout the state and creel surveys for steelhead in the lower Quinault River and Cook Creek. Steelhead caught during the months of May through October are “summer-runs” designated SSH. Steelhead caught from November through April are “winter-runs” designated WSH with the exception of steelhead caught above Bonneville Dam on the Columbia River, where they are considered “summer-runs” all year, because of run and spawn timing.

Table 33 presents steelhead sport harvest estimates for the 2000-2001 season geographically by stream and river system. Monthly estimate totals are given for marked and unmarked steelhead.

MARINE FISH

Marine fish are those species of fish which live their entire lives in salt water. There are four general groups of marine fish for management purposes: 1) bottomfish, which are species such as rockfish, lingcod and most species of sole and flounder; 2) forage fish, which are small, schooling fish such as herring and smelt; 3) tunas and mackerals; 4) Pacific halibut.

The recreational catch of bottomfish and halibut in ocean waters (Catch Areas 1-4) is estimated from marine surveys (Table 37 and 38). The estimates are made for each of the four main coastal fishing areas: Ilwaco, Westport, LaPush and Neah Bay.

The Puget Sound (Catch Areas 5-13) catch of bottomfish, excluding halibut, is estimated using a combination of two surveys: a creel survey of anglers to determine the catch rate and species composition and the salmon catch record card system to determine total fishing effort. It is important to note that an estimate of the bottomfish catch in Puget Sound is possible only when salmon fishing is open. Any bottomfish harvest in areas and times when salmon fishing is closed is excluded from these estimates. The totals shown on Table 39 are underestimates of the true catch, which is likely to be considerably higher.

The halibut catch in Puget Sound is estimated using a special survey of halibut catch record card holders. All persons fishing for halibut in Puget Sound Areas 5-13 are required to obtain a free halibut catch record card and record each halibut they catch. At the end of the halibut season, a subsample of

card holders is telephoned and asked to report their annual catch of halibut. This number is expanded to estimate the total halibut catch in Puget Sound. Due to the nature of this system, no estimate of halibut catch by catch record area is made and only the Puget Sound total is given. The recreational catch of forage fish is not routinely monitored and no harvest estimate is available.

SHELLFISH

Puget Sound recreational clam and oyster harvest estimates are shown in Table 41. Harvest totals for Manila and native littleneck clams, butter clams, cockles, softshell clams, horse clams, geoducks and oysters are shown for 27 areas. Estimates show **126,555** sport harvester trips gathered **548,140** total pounds of clams, and **663,268** oysters in 2000.

The Hood Canal sport shrimp fishery harvest is reported in Table 42. A total of **77,010** pounds of shrimp were caught in **18,071** pots. The sport crab pot fishery in the Puget Sound areas are summarized in Table 43. A total of **465,551** pot days produced an estimated harvest of **687,355** Dungeness crab.

SPORT LICENSES

Table 1. Number and Value of Sport Fishing Licenses Sold in Washington

April 1, 2000 - March 31, 2001 - License Year			
Type of License	Price	Number	Value
Saltwater			
Resident	\$18.00	42,987	\$773,766
Non-Resident	\$36.00	2,081	\$74,916
Senior	\$5.00	11,854	\$59,270
Freshwater			
Resident	\$20.00	352,742	\$7,054,840
Non-Resident	\$40.00	11,510	\$460,400
Senior	\$5.00	31,872	\$159,360
Shellfish/Seaweed			
Resident	\$7.00	145,979	\$1,021,853
Non-Resident	\$20.00	6,735	\$134,700
Senior	\$5.00	14,684	\$73,420
Combination (Saltwater/Freshwater/Shellfish)			
Resident	\$36.00	133,314	\$4,799,304
Non-Resident	\$72.00	1,020	\$73,440
Disabled Veteran	\$5.00	9,908	\$49,540
Youth	\$5.00	9,142	\$45,710
2-day Combination			
Resident	\$6.00	188,151	\$1,128,906
Non-Resident	\$6.00	28,886	\$173,316

Table 2. Number of Sport Salmon Catch Record Cards Issued 1971-2000

Year	Number of Catch Record Cards Issued
1971	541,600
1972	536,750
1973	568,825
1974	562,375
1975	576,075
1976	660,150
1977	641,050
1978	580,375
1979	487,875
1980	433,700
1981	463,561
1982	481,915
1983	481,025
1984	364,286
1985	403,523
1986	431,898
1987	475,459
1988	486,356
1989	509,534
1990	497,215
1991	489,394
1992	419,986
1993	447,986
1994	244,629
1995	416,707
1996	333,773
1997	331,511
1998	265,296
1999-2000	352,003
2000-2001	539,897

Table 3. Number of Sport Sturgeon Catch Record Cards Issued 1988-2000

Year	Number of Catch Record Cards Issued
1988	33,195
1989	35,576
1990	32,421
1991	32,396
1992	37,615
1993	43,067
1994	54,837
1995	62,572
1996	69,639
1997	76,806
1998	79,264
1999-2000	132,503
2000-2001	554,410

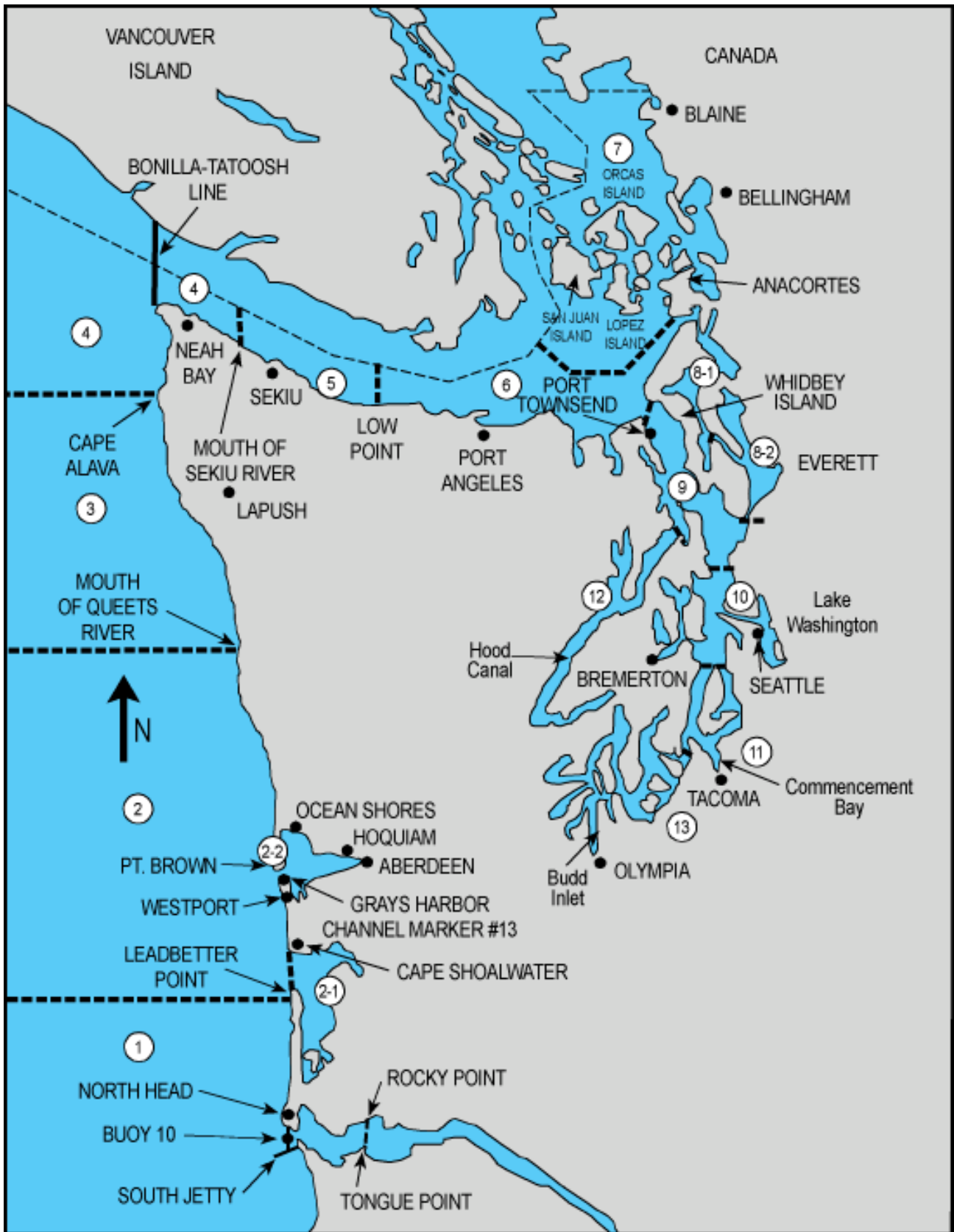
Table 4. Number of Sport Steelhead Catch Record Cards Issued 1971-2000

Year	Number of Catch Record Cards Issued
1971	145,647
1972	153,977
1973	165,671
1974	145,051
1975-76	no data
1976-77	no data
1977-78	no data
1978-79	130,000
1979-80	136,000
1980-81	139,500
1981-82	132,000
1982-83	100,000
1983-84	101,800
1984-85	133,400
1985-86	121,500
1986-87	100,500
1987-88	102,000
1988-89	108,182
1989-90	106,666
1990-91	98,362
1991-92	98,328
1992-93	98,933
1993-94	94,913
1994-95	87,093
1995-96	101,303
1996-97	92,858
1997-98	68,341
1998-99	85,636
1999-2000	183,520
2000-2001	583,726

SALMON



MAP OF SALMON CATCH RECORD CARD AREAS



1	ILWACO	West of the Buoy 10 line at the Columbia River mouth, north to Leadbetter Point.
2	WESTPORT-OCEAN SHORES	From Leadbetter Point north to the Queets River, excluding Willapa Bay and Grays Harbor.
2.1	WILLAPA BAY	East of a line from Leadbetter Point to Cape Shoalwater.
2.2	GRAYS HARBOR	East of a line from the tip of the North Jetty to exposed end of the South Jetty.
3	LA PUSH	From the Queets River north to Cape Alava.
4	NEAH BAY	From Cape Alava north and inside Juan de Fuca Strait to the Sekiu River.
5	SEKIU AND PILLAR POINT	From mouth of the Sekiu River east to Low Point, mouth of the Lyre River.
6	EAST JUAN DE FUCA STRAIT	From Low Point east to the Partridge Point - Point Wilson line north to the line from Trial Island (near Victoria B.C.) - Vessel Traffic Separation Buoy "R" - Smith Island to the Lawson Reef Buoy to Northwest Island to the Initiative 77 marker on Fidalgo Island.
7	SAN JUAN ISLANDS	All marine waters north of the Trial Island line described under Area 6 to the United States-Canada boundary.
8.1	DECEPTION PASS, HOPE ISLAND, AND SKAGIT BAY	From West Point to Reservation Head eastward through Deception Pass, including all waters of Swinomish Slough and Skagit Bay, and the portion of Saratoga Passage north and west of a line from East Point Light to light on Camano Island (Saratoga Pass Light #4FI Red 4 Sec.).
8.2	PORTS SUSAN AND GARDNER	East of East Point Light-Camano Island Light line (described in 8-1 above) and north of the Possession Point-Shipwreck line (described in 9 below).
9	ADMIRALTY INLET	All waters inside and south of the Partridge Point - Point Wilson line, south and west of a line from Possession Point 110° true to shipwreck, north of the Hood Canal Bridge, and north of the Apple Cove Point-Edwards Point line.
10	SEATTLE-BREMERTON AREA	South from the Apple Cove Point-Edwards Point line to a line projected true east- west through the north tip of Vashon Island.
11	TACOMA-VASHON ISLAND	South from a line projected true east west through the north tip of Vashon Island to the Tacoma Narrows Bridge.
12	HOOD CANAL	All waters south of the Hood Canal Bridge.
13	SOUTH PUGET SOUND	All waters south of Tacoma Narrows Bridge.

FRESHWATER AREAS:

RIVERS OR STREAMS OR LAKES - Name of river, stream or lake, except for Buoy 10

BUOY 10

From Buoy 10 Line to Rocky Point-Tongue Point Line

Table 5. Annual Sport Salmon Catch

Year	Total	Freshwater	Unknown	Area 1	Area 1A	Area 2	Area 2.1	Area 2.2	Area 3	Area 4	Area 5	Area 6	Area 7	Area 8	Area 8.1	Area 8.2	Area 9	Area 10	Area 11	Area 12	Area 13
1971	1,344,818	145,904		342,928		446,738			39,682	87,184	71,947	39,573	28,355	5,189			54,920	35,225	27,332	19,841	
1972	1,138,926	121,432		307,938		353,113			31,278	61,704	45,446	45,058	29,536	3,097			42,968	32,942	35,962	28,452	
1973	1,095,360	147,554		236,385		348,406			49,900	48,645	33,347	40,308	14,852	3,966			52,935	42,574	61,919	14,569	
1974	1,320,420	88,048		334,664		320,467			74,832	80,362	50,319	53,222	36,318	5,491			76,518	69,341	105,110	25,728	
1975	1,399,375	101,531		308,475		331,565			57,356	59,451	48,975	74,336	37,626	7,726			100,089	78,832	162,072	31,341	
1976	1,749,560	100,601		433,026		543,295			70,133	68,670	63,966	102,639	55,396	21,688			88,737	62,607	61,562	24,405	52,835
1977	1,191,414	96,843		248,518		321,888			38,359	86,186	73,106	61,568	31,709	17,792			64,651	39,372	44,657	22,020	44,745
1978	1,107,852	86,845		220,548		269,338			24,439	52,270	59,400	68,849	36,293	13,229			73,187	56,479	48,018	26,801	72,156
1979	1,123,809	88,659		167,478		174,365			24,160	53,840	134,354	70,839	48,101	33,835			104,619	71,167	71,495	20,006	60,891
1980	852,879	105,461		158,883		163,748			19,146	29,500	39,587	52,663	24,457	18,432			60,072	52,128	57,751	17,138	53,913
1981	760,115	58,139		142,879		151,301			1,734	36,883	55,900	56,318	21,826	16,986			67,838	42,602	42,175	14,989	50,545
1982	749,995	91,849		115,838		158,005			9,857	42,716	67,611	33,870	12,947	9,940			49,853	49,727	51,975	8,672	47,135
1983	860,623	108,783		98,599		100,791			7,318	58,469	62,486	74,311	29,844	23,268			98,485	54,228	72,772	11,756	59,513
1984	561,428	142,170		79,792		16,631			167	6,604	39,276	67,246	29,985	17,442			79,526	24,130	28,781	5,158	24,520
1985	686,333	107,734		93,927		93,620			2,062	26,878	101,920	45,342	23,798	25,427			75,193	33,019	38,157	4,897	14,359
1986	830,644	115,469		156,275		98,421			2,553	25,027	138,951	71,544	27,550	26,822			79,730	33,686	33,891	3,460	17,265
1987	782,834	110,636		123,441		71,458			3,005	29,418	107,138	82,377	27,152	31,421			86,270	42,179	32,753	8,947	26,639
1988	703,088	168,594		142,979		62,001			3,341	19,576	107,935	47,483	22,225	16,514			47,109	28,020	22,202	2,420	12,689
1989	834,426	121,417		157,701		100,000			2,405	44,600	164,580	64,766	19,078	23,165			63,724	36,748	24,561	4,588	7,093
1990	824,171	107,934		114,722		102,984			5,809	48,329	223,012	54,848	12,797	14,865			57,875	47,519	25,555	1,618	6,304
1991	932,461	153,719		230,582		107,362			5,615	43,357	216,816	42,812	16,602	20,337			40,390	32,229	15,549	3,225	3,866
1992	573,102	90,032		86,754		71,684			2,332	25,906	108,876	30,894	12,515	15,131			47,157	51,338	18,198	6,303	5,982
1993	599,381	145,579		67,582		60,993			3,469	31,154	80,496	44,174	35,697	24,320			41,949	36,699	14,130	3,540	9,599
1994	156,825	61,142		1,069		4,545			Closed	Closed	518	1,184	8,322	5,218			6,978	23,279	25,360	8,905	10,305
1995	524,232	190,158		28,697		31,857			1,990	15,604	53,553	20,617	23,801	66,403			22,920	28,560	28,242	5,200	6,630
1996	391,185	161,424		21,391		29,059			1,901	8,750	41,820	18,103	15,486	15,580			20,343	18,972	25,417	6,408	6,531
1997	394,887	98,220		34,417		18,122			1,260	2,577	52,890	23,614	35,016	43,543			24,356	25,277	23,146	7,089	5,360
1998	235,466	78,664		10,102		13,647			762	8,045	24,509	6,657	5,801	14,504			24,324	16,674	17,272	7,782	6,723
*1999	239,317	92,611		21,989	11,222	19,056	2,137	1,207	4,387	6,650	24,546	3,509	5,765		1,519	8,805	9,228	4,009	14,517	4,046	4,114
*2000	401,180	191,805	4,228	27,889	16,335	34,636	870	2,736	2,519	11,652	29,883	4,334	7,178		2,105	12,798	12,608	15,681	14,212	4,580	5,131

Note: In 1976, several area boundary lines were changed resulting in thirteen catch areas instead of twelve. The changes were mostly reflected in catch Areas 8, 9, 10 and new Area 13. In 1989, catch Area 8 was subdivided into Areas 8.1 and 8.2 and catch Area 2 was subdivided into Areas 2, 2.1 and 2.2. For comparative purposes, the catch for Areas 8.1 and 8.2 are totaled and entered under Area 8 until 1999. Similarly, the catch in Areas 2, 2.1 and 2.2 are included in the total catch for Area 2 until 1999. The total catch for Area 1 and Area 1A are also included in the total catch for Area 1 until 1999.

***Note:** Prior to 1999, sport salmon estimates were based on calendar years. In 1999, sport estimates cover January 1, 1999-March 31, 2000. Starting in 2000, sport salmon estimates are based on the fishing license year April 1- March 31.

Table 6. Total 2000-2001 Sport Salmon Catch

Marine Area	Chinook	Coho	Chum	Pink	Sockeye	Jacks	Unknown	Total Salmon	Marine Angler Trips	Salmon per Trip
Ilwaco-Ocean (Area 1)	1,630	26,259						27,889	16,243	1.72
Ilwaco-Buoy 10 (Area 1A)	2,972	13,363						16,335	42,061	0.39
Westport (Area 2)	6,254	28,382						34,636	19,895	1.74
Willapa Bay (Area 2.1)	468	354				48		870	N/A	N/A
Grays Harbor (Area 2.2)	842	1,554				340		2,736	N/A	N/A
La Push (Area 3)	211	2,298		10				2,519	2,205	1.14
Neah Bay (Area 4)	381	11,258	5	8				11,652	11,114	1.05
Subtotal Coast*	12,758	83,468	5	18	0	388	0	96,637	91,518	1.06
Seki-Pillar Point (Area 5)	471	29,405		5	2			29,883	29,606	1.01
East Juan de Fuca (Area 6)	1,138	3,196						4,334	26,777	0.16
San Juan Islands (Area 7)	4,495	2,644	21		18			7,178	30,627	0.23
Deception Pass, Hope Island (Area 8.1)	969	1,136						2,105	7,772	0.27
Port Susan & Port Gardner (Area 8.2)	3,208	9,574	4	12				12,798	33,536	0.38
Admiralty Inlet (Area 9)	4,351	8,253	4					12,608	43,629	0.29
Seattle-Bremerton (Area 10)	4,042	11,568	58		13			15,681	49,865	0.31
Tacoma-Vashon Island (Area 11)	8,108	6,054	50					14,212	72,194	0.20
Hood Canal (Area 12)	1,261	891	2,428					4,580	17,452	0.26
South Puget Sound (Area 13)	1,649	2,226	1,256					5,131	26,089	0.20
Subtotal Puget Sound	29,692	74,947	3,821	17	33	0	0	108,510	337,547	0.32
Marine Totals	42,450	158,415	3,826	35	33	388	0	205,147	429,065	0.48
Freshwater Totals	40,751	62,754	4,410	51	62,969	20,695	175	191,805	N/A	N/A
Unknown Area Totals	1,108	2,355	119	14	83	447	102	4,228	N/A	N/A
Grand Totals	84,309	223,524	8,355	100	63,085	21,530	277	401,180		N/A
**"Subtotal Coast" salmon per trip is calculated using the coast subtotal minus the Grays Harbor and Willapa Bay catch.										

Table 7. 2000-2001 Sport Salmon Catch, Area 1 - Ilwaco: Ocean

Week Ending	Year	Chinook	Coho	Pink	Sockeye	Chum	Total Salmon	Marine Angler Trips	Salmon per Trip
Jul 16	2000	111	3,460				3,571	2,069	1.73
Jul 23	2000	382	3,474				3,856	2,099	1.84
Jul 30	2000	255	4,521				4,776	2,674	1.79
Aug 6	2000	410	5,794				6,204	3,407	1.82
Aug 13	2000	472	9,010				9,482	5,994	1.58
Total		1,630	26,259	0	0	0	27,889	16,243	1.72

NOTE: Catch by species is presented by actual catch area and therefore may not correspond with catch by quota area statistics reported prior to 1995.

Table 8. 2000-2001 Sport Salmon Catch, Area 1 - Ilwaco: River

Week Ending	Year	Chinook	Coho	Pink	Sockeye	Chum	Total Salmon	Marine Angler Trips	Salmon per Trip
Aug 6	2000	135	1,302				1,437	3,356	0.43
Aug 13	2000	501	542				1,043	4,742	0.22
Aug 20	2000	988	2,765				3,753	10,858	0.35
Aug 27	2000	1,213	3,952				5,165	11,157	0.46
Sep 3	2000	41	2,809				2,850	5,748	0.50
Sep 10	2000	68	1,133				1,201	3,021	0.40
Sep 17	2000	26	753				779	2,291	0.34
Sep 24	2000		93				93	702	0.13
Oct 1	2000		10				10	123	0.08
Oct 8	2000		4				4	63	0.06
Total **		2,972	13,363	0	0	0	16,335	42,061	0.39

NOTE: Catch by species is presented by actual catch area and therefore may not correspond with catch by quota area statistics reported prior to 1995. ** Includes some catch just above the Megler-Astoria Bridge.

Table 9. 2000-2001 Sport Salmon Catch, Area 2 - Westport

Week Ending	Year	Chinook	Coho	Pink	Sockeye	Chum	Total Salmon	Marine Angler Trips	Salmon per Trip
Jul 9	2000	1,224	4,428				5,652	3,291	1.72
Jul 16	2000	747	4,122				4,869	2,779	1.75
Jul 23	2000	1,092	5,191				6,283	3,461	1.82
Jul 30	2000	1,090	4,813				5,903	3,233	1.83
Aug 6	2000	1,879	4,834				6,713	3,841	1.75
Aug 13	2000	222	4,994				5,216	3,290	1.59
Total		6,254	28,382	0	0	0	34,636	19,895	1.74

NOTE: Catch by species is presented by actual catch area and therefore may not correspond with catch by quota area statistics reported prior to 1995.

Table 10. 2000-2001 Sport Salmon Catch, Area 2.1 - Willapa Bay

Statistical Month	Year	Chinook	Coho	Pink	Sockeye	Chum	Jack, Chinook	Jack, Coho	Total Salmon
Jul	2000		22						22
Aug	2000	70	63						133
Sep	2000	371	221				6	29	627
Oct	2000	20	41					13	74
Dec	2000		7						7
Mar	2001	7							7
Total		468	354	0	0	0	6	42	870

Table 11. 2000-2001 Sport Salmon Catch, Area 2.2 - Grays Harbor

Statistical Month	Year	Chinook	Coho	Pink	Sockeye	Chum	Jack, Chinook	Jack, Coho	Total Salmon
May	2000	7	22						29
June	2000		74						74
July	2000	15	206						221
Aug	2000	66	156					7	229
Sep	2000	671	806				14	57	1,548
Oct	2000	83	290				7	255	635
Total		842	1,554	0	0	0	21	319	2,736

Table 12. 2000-2001 Sport Salmon Catch, Area 3 - La Push

Week Ending	Year	Chinook	Coho	Pink	Sockeye	Chum	Total Salmon	Marine Angler Trips	Salmon per Trip
Jul 9	2000	25	143	5			173	427	0.41
Jul 16	2000	34	213	3			250	294	0.85
Jul 23	2000	17	338	1			356	303	1.17
Jul 30	2000	58	571	1			630	396	1.59
Aug 6	2000	54	589				643	481	1.34
Aug 13	2000	23	444				467	304	1.54
Total		211	2,298	10	0	0	2,519	2,205	1.14

NOTE: Catch by species is presented by actual catch area and therefore may not correspond with catch by quota area statistics reported prior to 1995.

Table 13. 2000-2001 Sport Salmon Catch, Area 4 - Neah Bay

Week Ending	Year	Chinook	Coho	Pink	Sockeye	Chum	Total Salmon	Marine Angler Trips	Salmon per Trip
Jul 9	2000	127	958	5			1,090	2,232	0.49
Jul 16	2000	61	694				755	870	0.87
Jul 23	2000	57	1,012				1,069	905	1.18
Jul 30	2000	38	639	3			680	777	0.88
Aug 6	2000	39	927			5	971	1,044	0.93
Aug 13	2000	31	1,417				1,448	1,088	1.33
Aug 20	2000	22	1,888				1,910	1,257	1.52
Aug 27	2000	6	1,656				1,662	1,295	1.28
Sep 3	2000		995				995	897	1.11
Sep 10	2000		712				712	415	1.72
Sep 17	2000		279				279	224	1.25
Sep 24	2000		63				63	78	0.81
Oct 1	2000		18				18	32	0.56
Total		381	11,258	8	0	5	11,652	11,114	1.05
<p>NOTE: Catch by species is presented by actual catch area and therefore may not correspond with catch by quota area statistics reported prior to 1995.</p>									

Table 14. 2000-2001 Sport Salmon Catch, Area 5 - Sekiu - Pillar Point

Statistical Month	Year	Chinook	Coho	Pink	Sockeye	Chum	Total Salmon	Marine Angler Trips	Salmon Per Trip
Apr	2000	98					98	578	0.17
May	2000	1	2				3	157	0.02
Aug	2000	64	5,906	5	2		5,977	11,055	0.54
Sep	2000	7	21,958				21,965	15,113	1.45
Oct	2000		1,539				1,539	1,652	0.93
Nov	2000	80					80	67	1.19
Feb	2001	177					177	787	0.22
Mar	2001	44					44	197	0.22
Total		471	29,405	5	2	0	29,883	29,606	1.01

NOTE: Estimates for August 01 - September 30 are from creel surveys; all other estimates are from catch record cards. Refer to Table 24 for creel surveys during August 01 - September 30, 2000.

Table 15. 2000-2001 Sport Salmon Catch, Area 6 - East Juan de Fuca Strait

Statistical Month	Year	Chinook	Coho	Pink	Sockeye	Chum	Total Salmon	Marine Angler Trips	Salmon Per Trip
Apr	2000	309					309	454	0.68
Jul	2000	346					346	1,039	0.33
Aug	2000	109					109	17,416	0.01
Sep	2000		42				42	3,612	0.01
Oct	2000		407				407	886	0.46
Nov	2000		2,147				2,147	1,344	1.60
Dec	2000		355				355	253	1.40
Feb	2001	277	245				522	845	0.62
Mar	2001	97					97	928	0.10
Total		1,138	3,196	0	0	0	4,334	26,777	0.16

Table 16. 2000-2001 Sport Salmon Catch, Area 7 - San Juan Islands

Statistical Month	Year	Chinook	Coho	Pink	Sockeye	Chum	Total Salmon	Marine Angler Trips	Salmon Per Trip
Apr	2000	260					260	1,741	0.15
Jun	2000	6					6	41	0.15
Jul	2000	594					594	3,932	0.15
Aug	2000	1,050	163		18		1,231	8,589	0.14
Sep	2000	274	1,102				1,376	4,864	0.28
Oct	2000	38	1,379			14	1,431	2,253	0.64
Nov	2000	479				6	485	1,366	0.36
Dec	2000	60				1	61	171	0.36
Feb	2001	867					867	3,627	0.24
Mar	2001	867					867	4,043	0.21
Total		4,495	2,644	0	18	21	7,178	30,627	0.23

Table 17. 2000-2001 Sport Salmon Catch, Area 8.1 - Deception Pass / Hope Island

Statistical Month	Year	Chinook	Coho	Pink	Sockeye	Chum	Total Salmon	Marine Angler Trips	Salmon Per Trip
Apr	2000	30					30	141	0.21
Sep	2000	4	570				574	1,266	0.45
Oct	2000		551				551	1,890	0.29
Nov	2000	507	14				521	1,507	0.35
Dec	2000	41	1				42	123	0.34
Jan	2001	6					6	45	0.13
Feb	2001	145					145	1,067	0.14
Mar	2001	236					236	1,733	0.14
Total		969	1,136	0	0	0	2,105	7,772	0.27

Table 18. 2000-2001 Sport Salmon Catch, Area 8.2 - Port Susan / Port Gardner

Statistical Month	Year	Chinook	Coho	Pink	Sockeye	Chum	Total Salmon	Marine Angler Trips	Salmon Per Trip
Apr	2000	176					176	1,265	0.14
Jul	2000	354	83				437	2,828	0.15
Aug	2000	754	198	12			964	6,974	0.14
Sep	2000	89	6,711				6,800	8,748	0.78
Oct	2000	4	2,582			4	2,590	6,191	0.42
Nov	2000	79					79	237	0.33
Dec	2000	30					30	91	0.33
Feb	2001	758					758	3,795	0.20
Mar	2001	964					964	3,407	0.28
Total		3,208	9,574	12	0	4	12,798	33,536	0.38

Table 19. 2000-2001 Sport Salmon Catch, Area 9 - Admiralty Inlet

Statistical Month	Year	Chinook	Coho	Pink	Sockeye	Chum	Total Salmon	Marine Angler Trips	Salmon Per Trip
Apr	2000	164					164	3,866	0.04
May	2000	30					30	715	0.04
Jun	2000	91					91	2,152	0.04
Jul	2000	231					231	5,450	0.04
Aug	2000	550	56				606	4,483	0.14
Sep	2000	55	6,339			4	6,398	11,525	0.56
Oct	2000	46	1,840				1,886	6,135	0.31
Nov	2000	1,440	9				1,449	3,809	0.38
Dec	2000	108	1				109	271	0.40
Jan	2001	12					12	38	0.32
Feb	2001	682	3				685	2,178	0.31
Mar	2001	942	5				947	3,007	0.31
Total		4,351	8,253	0	0	4	12,608	43,629	0.29

Table 20. 2000-2001 Sport Salmon Catch, Area 10 - Seattle / Bremerton

Statistical Month	Year	Chinook	Coho	Pink	Sockeye	Chum	Total Salmon	Marine Angler Trips	Salmon Per Trip
Apr	2000	8	53				61	237	0.26
May	2000	1	5				6	24	0.25
Jun	2000	11	74				85	332	0.26
Jul	2000	395	2,638		11		3,044	11,811	0.26
Aug	2000	1,484	3,404		2	4	4,888	16,744	0.29
Sep	2000	9	3,832			3	3,844	5,994	0.64
Oct	2000		1,497			37	1,534	5,507	0.28
Nov	2000	778	52			13	843	2,647	0.32
Dec	2000	78	5			1	84	266	0.32
Jan	2001	54					54	268	0.20
Feb	2001	814	5				819	4,013	0.20
Mar	2001	410	3				413	2,022	0.20
Total		4,042	11,568	0	13	58	15,681	49,865	0.31

Table 21. 2000-2001 Sport Salmon Catch, Area 11 - Tacoma / Vashon Island

Statistical Month	Year	Chinook	Coho	Pink	Sockeye	Chum	Total Salmon	Marine Angler Trips	Salmon Per Trip
Apr	2000	71	2				73	616	0.12
May	2000	18					18	154	0.12
Jun	2000	620	17				637	5,390	0.12
Jul	2000	1,578	1,504				3,082	14,602	0.21
Aug	2000	3,744	1,314				5,058	27,606	0.18
Sep	2000	658	2,388			6	3,052	10,075	0.30
Oct	2000	263	822			19	1,104	5,213	0.21
Nov	2000	432				23	455	2,795	0.16
Dec	2000	46				2	48	298	0.16
Jan	2001	18					18	145	0.12
Feb	2001	294	3				297	2,361	0.13
Mar	2001	366	4				370	2,939	0.13
Total		8,108	6,054	0	0	50	14,212	72,194	0.20

Table 22. 2000-2001 Sport Salmon Catch, Area 12 - Hood Canal

Statistical Month	Year	Chinook	Coho	Pink	Sockeye	Chum	Total Salmon	Marine Angler Trips	Salmon Per Trip
Apr	2000	24	6				30	257	0.12
May	2000	6	6				12	103	0.12
Jul	2000	24					24	221	0.11
Aug	2000	419					419	3,817	0.11
Sep	2000	421	227				648	2,669	0.24
Oct	2000	30	567			398	995	4,149	0.24
Nov	2000	87	73			1,873	2,033	4,571	0.44
Dec	2000	7	12			157	176	387	0.45
Feb	2001	152					152	799	0.19
Mar	2001	91					91	479	0.19
Total		1,261	891	0	0	2,428	4,580	17,452	0.26

Table 23. 2000-2001 Sport Salmon Catch, Area 13 - South Puget Sound

Statistical Month	Year	Chinook	Coho	Pink	Sockeye	Chum	Total Salmon	Marine Angler Trips	Salmon Per Trip
Apr	2000	31	11				42	445	0.09
May	2000	76	27				103	1,082	0.10
Jun	2000	72	25				97	1,018	0.10
Jul	2000	216	275				491	3,022	0.16
Aug	2000	963	184				1,147	9,827	0.12
Sep	2000	168	1,099				1,267	4,129	0.31
Oct	2000	20	579			401	1,000	3,571	0.28
Nov	2000	19				814	833	1,371	0.61
Dec	2000	1				41	42	71	0.59
Jan	2001	23	7				30	431	0.07
Feb	2001	32	10				42	605	0.07
Mar	2001	28	9				37	517	0.07
Total		1,649	2,226	0	0	1,256	5,131	26,089	0.20

Table 24. 2000 Sport Catch: Puget Sound Area 5 Creel Survey Data

Catch Area	Month/Day	Boats	Anglers	Chinook	Coho	Chum	Pink	Sockeye	Total Salmon
Area 5	August 01 - September 30	11,353	28,787	70	29,386	0	5	2	29,463

Table 25. 2000-2001 Freshwater Salmon Sport Catch, by Area and Month														
COASTAL RIVER SYSTEMS														
System	Catch Area	Species	2000							2001			Total	
			Apr	May	Jun	Jul	Aug	Sep	Oct	Nov	Dec	Jan		Feb
Chehalis River	Chehalis River	Chinook		49	14	35		342	209	14				663
		Chum								7				7
		Coho						460	704	364				1,528
		Jack, Chinook				7		28	202	7				244
		Jack, Coho						223	669	77	7			976
		Total		49	14	42		1,053	1,784	469	7			3,418
	Satsop River	Chinook							147	42				189
		Chum							153	153				306
		Coho							342	160	7			509
		Jack, Chinook							14	7				21
		Jack, Coho							91	14				105
		Total							747	376	7			1,130
	Skookumchuck River	Chinook							21					21
		Coho							7					7
		Total							28					28
Wynoochee River	Chinook							35					35	
	Coho							49	14				63	
	Jack, Chinook							7					7	
	Jack, Coho							7					7	
	Total							98	14				112	
Copalis River	Copalis River	Chinook						7		7			14	
		Chum							7	14			21	
		Coho						28	50	28	7		113	
		Jack, Coho						7	28				35	
		Total						42	85	49	7		183	
Grays Harbor	Elk River (Grays Harbor Co)	Jack, Chinook						14					14	
		Total						14					14	
	Humptulips River	Chinook						14	28	14				56
		Chum							14	21	21			56
		Coho							1,041	159	103			1,303
		Jack, Unknown							7					7
		Jack, Chinook							172		7			179
		Jack, Coho							655	28	14			697
Total						14	1,917	222	145			2,298		

Table 25. 2000-2001 Freshwater Salmon Sport Catch, by Area and Month

COASTAL RIVER SYSTEMS															
System	Catch Area	Species	2000						2001			Total			
			Apr	May	Jun	Jul	Aug	Sep	Oct	Nov	Dec		Jan	Feb	Mar
Grays Harbor (continued)	Johns River	Coho					76		14						90
		Jack, Coho							7	34					41
		Total					76		21	34					131
	Wishkah River	Chinook					14		14						28
		Chum								7					7
		Coho							14	34					48
Jack, Coho								7	7					14	
	Total					14		35	48					97	
Hoh River	Hoh River	Chinook				21		70	255	154					500
		Coho						7	133	140					280
		Jack, Chinook				28		7	65	14					114
		Jack, Coho					7	14	14	28					63
		Unknown										7	7		14
		Total				49	7	98	467	336			7	7	971
Joe Creek	Joe Creek	Coho							70	42	28				140
		Jack, Coho							14						14
		Total							84	42	28				154
Queets River	Clearwater River	Chinook							7						7
		Coho								7	14				21
		Total							7	7	14				28
	Queets River	Chinook					7								7
		Coho					7			14					21
		Jack, Coho					65	43							108
	Total					79	43	14						136	
Quillayute River	Salmon River (Jefferson Co)	Chinook							29	7					36
		Coho							152	29					181
		Jack, Chinook							14	7					21
		Total							195	43					238
	Bogachiel River	Chinook					7	7	76	7					97
		Coho					7		207	41					255
	Jack, Coho							28	7					35	
	Total					14	7	311	55					387	

Table 25. 2000-2001 Freshwater Salmon Sport Catch, by Area and Month																
COASTAL RIVER SYSTEMS																
System	Catch Area	Species	2000									2001			Total	
			Apr	May	Jun	Jul	Aug	Sep	Oct	Nov	Dec	Jan	Feb	Mar		
Quillayute River (continued)	Calawah River	Chinook								21					21	
		Coho								14	14					28
		Jack, Coho								7						7
		Total								42	14					56
	Dickey River (Clallam Co)	Coho								7	7	7				21
		Jack, Coho								21						21
		Total								28	7	7				42
	Quillayute River	Chinook		14				7	14	28						63
		Coho						103	7	186		7				303
		Jack, Coho								41						41
Unknown												7			7	
Sol Duc River	Total		14				110	21	255			14			414	
	Chinook	14	62	117	69	21	34	90	76						483	
	Coho					110	96	366	138	21					731	
	Sockeye			7	90	21	7	34							159	
	Jack, Chinook	7		7		14	7	41	21	7					104	
	Jack, Coho						30	48	7						85	
	Unknown			7											7	
Total	21	62	138	159	166	174	579	242	28						1,569	
Quinault River	Quinault River	Chinook							27	27					54	
		Coho							29	18					47	
		Jack, Coho							9						9	
		Total							65	45					110	
Sooes River (Clallam Co)	Sooes River (Clallam Co)	Chinook					9								9	
		Coho					9			109					118	
		Total					18			109					127	
Willapa Bay Pacific Co	Bear River (Pacific Co)	Chum							76	21					97	
		Coho							21						21	
		Total							97	21					118	
	Naselle River	Chinook				7	21	296	262	7					593	
		Chum							14	28					42	
		Coho						41	276	110	124				551	
Total	Jack, Chinook							7	7					14		
	Jack, Coho						14	48	14	7				83		
Total				7	21	351	607	159	138					1,283		

Table 25. 2000-2001 Freshwater Salmon Sport Catch, by Area and Month

COASTAL RIVER SYSTEMS															
System	Catch Area	Species	2000									2001			Total
			Apr	May	Jun	Jul	Aug	Sep	Oct	Nov	Dec	Jan	Feb	Mar	
Willapa Bay	Nemah River	Chinook								62					62
		Chum								69	7				76
		Coho					21	34	317	7					379
		Jack, Chinook							14						14
		Jack, Coho							7						7
		Total					21	34	469	14					538
	North River	Jack, Coho							7						7
		Total							7						7
	Willapa River	Chinook					14	83	165	14	7				283
		Coho							103	103	48	200	14	7	475
		Jack, Chinook							21	7					28
		Jack, Coho								48	14	21			83
Total						14	207	323	76	228	14	7		869	
COASTAL RIVER TOTALS	Chinook	14	125	131	132	79	888	1,476	369	7				3,221	
	Chum							333	258	21				612	
	Coho					250	859	4,102	1,483	518	14	7		7,233	
	Sockeye			7	90	21	7	34						159	
	Unknown			7							7		7	28	
	Jack, Unknown							7						7	
	Jack, Chinook	7		7	35	14	77	543	56	21				760	
	Jack, Coho					7	353	1,799	230	49				2,438	
	Total	21	125	152	257	371	2,184	8,294	2,396	623	14	14	7	14,458	

Table 25. 2000-2001 Freshwater Salmon Sport Catch, by Area and Month

COLUMBIA RIVER SYSTEMS																	
System	Catch Area	Species	2000									2001			Total		
			Apr	May	Jun	Jul	Aug	Sep	Oct	Nov	Dec	Jan	Feb	Mar			
Cowlitz River	Cispus River	Coho								7	141	92				240	
		Jack, Coho										7				7	
		Total								7	141	99				247	
	Cowlitz River	Chinook	353	113	7	28									21	21	543
		Coho				29	92	1,562	4,028	2,622	933	92	7	28			9,393
		Sockeye				7											7
		Jack, Chinook	14	7	7	7											35
		Jack, Coho				7	14	410	1,717	912	170	57					3,287
	Total	367	120	14	78	106	1,972	5,745	3,534	1,103	149	28	49			13,265	
	Green River (Cowlitz Co)	Chinook		14	28					28	35						105
		Coho							1,166	1,663	78						2,907
		Jack, Coho							21	7						28	
	Total		14	28					1,187	1,698	113						3,040
Tilton River	Coho								594	1,342	254	28	42		2,260		
	Unknown		7			7									14		
	Jack, Chinook						7	14							21		
	Jack, Coho							106	99						205		
	Total		7			7	7	714	1,441	254	28	42		2,500			
Toutle River	Coho					21	2,643	1,194	85						3,943		
	Jack, Coho						78	64	7						149		
	Total					21	2,721	1,258	92						4,092		
Lewis River	Chinook	389	664	166	14									50	1,283		
	Coho				22	303	1,769	3,515	1,465	173	14				7,261		
	Jack, Chinook	14	36	202	51					14					317		
	Jack, Coho				51	137	1,357	1,242	195	7					2,989		
	Total	403	700	368	138	440	3,126	4,757	1,674	180	14		50		11,850		
Lower Columbia River	Below Bonneville	Chinook					1,901	2,250	52	58	42	7	37	2,268	6,615		
		Coho					41	567	427	96	35	49			1,215		
		Jack, Chinook			16	99	119	644	29	14	7				928		
		Jack, Coho					41	901	959	91	7				1,999		
		Total			16	99	2,102	4,362	1,467	259	91	56	37	2,268	10,757		
	Deep River (Wahkiakum Co)	Chinook	14		21				7							42	
		Coho							35							35	
Total	14		21				42							77			

Table 25. 2000-2001 Freshwater Salmon Sport Catch, by Area and Month

COLUMBIA RIVER SYSTEMS																
System	Catch Area	Species	2000									2001			Total	
			Apr	May	Jun	Jul	Aug	Sep	Oct	Nov	Dec	Jan	Feb	Mar		
Lower Columbia River (continued)	Elochoman River	Chinook					7	21							4	32
		Coho							105	709	112	98			1	1,025
		Jack, Chinook								7						7
		Jack, Coho	1						28	98	49	35				211
		Total	1				7	154	814	161	133				5	1,275
	Grays River	Coho							457	428						885
		Jack, Coho							21	14						35
		Total							478	442						920
	Kalama River	Chinook	91	204	91	21	246	337	63	7		14	14	14	1,102	
		Coho				21	42	660	864	176	42	7			1,812	
		Jack, Chinook	14	7	140	7		14	14						196	
		Jack, Coho				14		105	829	98	7				1,053	
		Total	105	211	231	63	288	1,116	1,770	281	49	21	14	14	4,163	
	Washougal River	Coho							21	133	28	14			14	210
		Jack, Coho								28	14	7				49
Total								21	161	42	21			14	259	
Lower Columbia River Total (Excluding Cowlitz and Lewis Rivers)	Chinook	847	995	313	63	2,154	2,615	143	100	42	21	72	2,357	9,722		
	Coho				72	499	8,985	13,562	6,145	1,641	190	49	43	31,186		
	Sockeye				7									7		
	Unknown		7			7								14		
	Jack, Chinook	42	50	365	164	119	665	64	28	7				1,504		
	Jack, Coho	1			72	192	2,921	5,064	1,465	240	57			10,012		
Total	890	1,052	678	378	2,971	15,186	18,833	7,738	1,930	268	121	2,400	52,445			
Big White Salmon River	Big White Salmon River	Chinook	133	81	7		37	66	44					368		
		Coho						81	295	15				391		
		Jack, Chinook					7	15						22		
		Jack, Coho							7					7		
		Total	133	81	7		44	162	346	15				788		
Klickitat River	Klickitat River	Chinook	76	166	118	35	131	747	595	21				1,889		
		Coho					7	48	871	263	35			1,224		
		Jack, Chinook			83	138		76	7	7				311		
		Jack, Coho						97	118	28	7			250		
		Total	76	166	201	173	138	968	1,591	319	42				3,674	

Table 25. 2000-2001 Freshwater Salmon Sport Catch, by Area and Month

COLUMBIA RIVER SYSTEMS																	
System	Catch Area	Species	2000									2001			Total		
			Apr	May	Jun	Jul	Aug	Sep	Oct	Nov	Dec	Jan	Feb	Mar			
Little White Salmon River & Drano Lake	Little White Salmon River & Drano Lake	Chinook	1,867	974			161	227	106						93	3,428	
		Coho					87	532	178								797
		Jack, Chinook	7	69		7	14	269	50								416
		Jack, Coho					21	425	269								715
		Total	1,874	1,043		7	283	1,453	603							93	5,356
Mid Columbia River	Columbia Bonneville Dam to McNary Dam	Chinook				54	275	440	144	14	7					934	
		Coho					27	69	769	206	7					1,078	
		Jack, Chinook					7	48	62							117	
		Jack, Coho					21	14	55	7						97	
		Total				54	330	571	1,030	227	14						2,226
Wind River	Wind River	Chinook	3,008	4,299	2,281	12	41	41	14						108	9,804	
		Coho					41	83	21							145	
		Jack, Chinook	17	155	15		7	7	7							208	
		Jack, Coho						7								7	
		Total	3,025	4,454	2,296	12	89	138	42							108	10,164
Mid Columbia River System Total		Chinook	5,084	5,520	2,406	101	645	1,521	903	35	7				201	16,423	
		Coho					162	813	2,134	484	42					3,635	
		Jack, Chinook	24	224	98	145	35	415	126	7						1,074	
		Jack, Coho					42	543	449	35	7					1,076	
		Total	5,108	5,744	2,504	246	884	3,292	3,612	561	56				201	22,208	
Upper Columbia River	Columbia McNary Dam to above Grand Coulee	Chinook		336	104	63	258	1,650	2,255	117						4,783	
		Coho					42	133	153	31						359	
		Sockeye				7		7								14	
		Jack, Chinook		153	21		42	160	362	21						759	
		Jack, Coho						70	139	7						216	
		Total		489	125	70	342	2,020	2,909	176					6,131		
Wenatchee River	Icicle Creek	Chinook		301	586	175										1,062	
		Jack, Chinook		7		7										14	
		Total		308	586	182										1,076	
Yakima River	Yakima River	Chinook			13	14		149	296	40						512	
		Coho						47	87	66						200	
		Jack, Chinook				7		13	33	7						60	
		Jack, Coho						7		13						20	
		Total			13	21			216	416	126					792	

Table 25. 2000-2001 Freshwater Salmon Sport Catch, by Area and Month

COLUMBIA RIVER SYSTEMS															
System	Catch Area	Species	2000									2001			Total
			Apr	May	Jun	Jul	Aug	Sep	Oct	Nov	Dec	Jan	Feb	Mar	
Upper Columbia River System Total		Chinook		637	703	252	258	1,799	2,551	157					6,357
		Coho					42	180	240	97				559	
		Sockeye				7		7						14	
		Jack, Chinook		160	21	14	42	173	395	28				833	
		Jack, Coho						77	139	20				236	
		Total		797	724	273	342	2,236	3,325	302				7,999	
Snake River	Grande Ronde River	Coho							14			7	7	28	
		Total							14			7	7	28	
	Snake River	Chinook	7											7	
		Coho		7				14	7		14			42	
		Unknown		7										7	
		Total		7	14				14	7	14				56
Snake River System Total		Chinook	7											7	
		Coho		7				14	21		14	7	7	70	
		Unknown		7										7	
		Total	7	14				14	21		14	7	7	84	
COLUMBIA RIVER TOTALS		Chinook	5,938	7,152	3,422	416	3,057	5,935	3,597	292	49	21	72	2,558	32,509
		Coho		7		72	703	9,992	15,957	6,726	1,697	197	56	43	35,450
		Sockeye				14		7							21
		Unknown		14			7								21
		Jack, Chinook	66	434	484	323	196	1,253	585	63	7				3,411
		Jack, Coho	1			72	234	3,541	5,652	1,520	247	57			
		Total	6,005	7,607	3,906	897	4,197	20,728	25,791	8,601	2,000	275	128	2,601	82,736

Table 25. 2000-2001 Freshwater Salmon Sport Catch, by Area and Month

PUGET SOUND RIVER SYSTEMS																			
System	Catch Area	Species	2000									2001			Total				
			Apr	May	Jun	Jul	Aug	Sep	Oct	Nov	Dec	Jan	Feb	Mar					
Chambers Creek	Chambers Creek	Chinook						27										27	
		Coho								9									9
		Total							27		9								36
Deschutes River	Deschutes River	Chinook						15	103	52								170	
		Total						15	103	52								170	
Dosewallips River	Dosewallips River	Chum									18							18	
		Total									18							18	
Duckabush River	Duckabush River	Chum									54							54	
		Coho								9								9	
		Total								9		54						63	
Dungeness River	Dungeness River	Coho								1,512	778	86						2,376	
		Jack, Coho									7							7	
		Total								1,512	785	86						2,383	
Elwha River	Elwha River	Coho								199	30							229	
		Jack, Coho									30							30	
		Total								229	30							259	
Green-Duwamish River	Green Duwamish River	Chinook								238								238	
		Chum								98	168	49						315	
		Coho						210	1,700	245	7							2,162	
		Jack, Chinook								7								7	
		Jack, Coho								322	42	14						378	
Total						210	2,365	455	70							3,100			
Kennedy Creek	Kennedy Creek	Chum								260	843	49						1,152	
		Coho									7							7	
		Unknown												21	14				35
		Total								260	850	49		21	14				1,194
Lake Washington	Lake Washington Sammamish	Chinook				8			21									29	
		Chum										21						21	
		Coho						14	146	326	7							493	
		Sockeye			69	62,237		291										62,597	
		Jack, Coho										7						7	
		Unknown						7	7									14	
Total			69	62,245		312	174	326	35							63,161			
McLane Creek	McLane Creek	Chum								74	228							302	
		Total								74	228							302	

Table 25. 2000-2001 Freshwater Salmon Sport Catch, by Area and Month

PUGET SOUND RIVER SYSTEMS															
System	Catch Area	Species	2000						2001			Total			
			Apr	May	Jun	Jul	Aug	Sep	Oct	Nov	Dec		Jan	Feb	Mar
Nisqually River	McAllister Creek	Chinook				14	57	367	120						558
		Coho							36						36
		Jack, Chinook					14	100							114
		Total				14	71	467	156						708
	Nisqually River	Chinook				14	79	242	71						406
		Chum							7	36	72				115
		Coho					14	81	45	14					154
		Jack, Chinook			7	7	64	172	14						264
		Jack, Coho						29	7				7		43
		Total			7	21	157	524	144	50	79				982
Nooksack Samish River	Dakota Creek	Chinook								7					7
		Chum									7				7
		Coho								14					14
		Total								21	7				28
	Nooksack River	Chinook					28								28
		Chum									76				76
		Coho						21	403	1,902	1,120	70			3,516
		Unknown			7				35				14		56
		Jack, Chinook							35	19					54
		Jack, Coho							14	49	21	7			91
	Nooksack River	Total			7		49	487	1,970	1,217	77		14		3,821
		Samish River	Chinook					118	1,099	417	21				1,655
			Coho					7	111	396	63				577
			Jack, Chinook					7	132	21					160
			Jack, Coho					14	28	49					91
	Total						146	1,370	883	84				2,483	
	Whatcom Creek	Chinook							90	70	28				188
		Chum								7	118	42			167
		Jack, Coho							7						7
Total								97	77	146	42			362	

Table 25. 2000-2001 Freshwater Salmon Sport Catch, by Area and Month

PUGET SOUND RIVER SYSTEMS															
System	Catch Area	Species	2000									2001			Total
			Apr	May	Jun	Jul	Aug	Sep	Oct	Nov	Dec	Jan	Feb	Mar	
Puyallup River	Carbon River	Chinook						858	63						921
		Chum							7	14					21
		Coho						464	1,963	42					2,469
		Jack, Chinook						7	14						21
		Jack, Coho						49	289						338
		Total						1,378	2,336	56					3,770
Puyallup River	Puyallup River	Chinook					77	36	14	7				134	
		Chum							14	63	7			84	
		Coho					84	766	260	14				1,124	
		Jack, Chinook					28	28						56	
		Jack, Coho					35	507	113					655	
		Unknown											7	7	
	Total					224	1,337	401	84	7		7	2,060		
	White Stuck River	White Stuck River	Chinook							7					7
			Coho					7							7
			Unknown							7					7
Total							7		14					21	
Quilcene River	Quilcene River	Coho						1,170	727					1,897	
		Total						1,170	727					1,897	
Skagit River	Sauk River	Coho					7		7					14	
		Jack, Coho							7					7	
		Unknown										7		7	
		Total					7		14			7		28	
	Skagit River	Skagit River	Chinook					7			12				19
			Chum							119	429	66			614
Coho								211	1,281	193				1,685	
Sockeye						192								192	
Jack, Chinook								7						7	
Jack, Coho										20	7			27	
Total				192	7	218	1,420	641	66			2,544			
Skokomish River	Skokomish River	Chinook					123	422	55					600	
		Chum							46	49				95	
		Coho					85	43	263	49				440	
		Jack, Chinook					25	190						215	
		Jack, Coho					6	6	43	49				104	
		Total					239	661	407	147				1,454	

Table 25. 2000-2001 Freshwater Salmon Sport Catch, by Area and Month

PUGET SOUND RIVER SYSTEMS																	
System	Catch Area	Species	2000						2001			Total					
			Apr	May	Jun	Jul	Aug	Sep	Oct	Nov	Dec		Jan	Feb	Mar		
Snohomish System	Pilchuck River	Chum									22	14				36	
		Total									22	14				36	
	Skykomish River	Chinook							7								7
		Chum								130	354	50				534	
		Coho								43	556	87	36				722
		Jack, Coho								7	51	7				65	
		Total							50	744	448	86				1,328	
	Snohomish River	Chum									36	36	14				86
		Pink						29				22				51	
		Coho						7	267	1,689	94	14				2,071	
		Jack, Coho									7				7		
		Total						36	267	1,732	152	28				2,215	
	Snoqualmie River	Chum											14				14
		Coho										44				44	
		Total										44	14				58
Stillaguamish River	Chum											87				87	
	Coho							7							7		
	Total							7				87				94	
Squalicum Creek	Chinook											27				27	
	Coho										9				9		
	Total										9	27				36	
PUGET SOUND RIVERS TOTALS	Chinook				36	504	3,265	1,148	68							5,021	
	Chum							798	2,637	363						3,798	
	Pink						29		22							51	
	Coho						253	3,924	12,938	2,743	213					20,071	
	Sockeye			69	62,429	291										62,789	
	Unknown			7		7	42	7						42	14	7	126
	Jack, Chinook			7	7	138	671	75									898
	Jack, Coho					55	647	987	140	28							1,857
TOTALS	Total				83	62,472	1,277	8,549	15,953	5,610	604	42	14	7		94,611	

Table 25A. 2000-2001 Salmon Sport Catch, Unknown Area by Month

		UNKNOWN SYSTEM													
System	Catch Area	Species	2000									2001			Total
			Apr	May	Jun	Jul	Aug	Sep	Oct	Nov	Dec	Jan	Feb	Mar	
Unknown Catch Area	Unknown	Chinook	103	109	64	109	157	291	177	7	14		27	50	1,108
		Chum						7	23	68	14	7			119
		Coho	28	20	14	219	423	595	892	102	7	14	14	27	2,355
		Pink				7	7								14
		Sockeye				55						7	14	7	83
		Unknown					34	41	20					7	102
		Jack, Unknown								7					7
		Jack, Chinook		20					42	20					82
		Jack, Coho			7	21	7	118	191	7	7				358
		Total	131	149	85	411	628	1,094	1,330	184	49	35	48	84	4,228

Table 26. 2000-2001 Washington Sport Salmon Fishing, by Residence

County of Residence	# Catch Record Cards	Population by County	% Catch Record Card Holders	Total Freshwater Salmon Catch	Total Marine Salmon Catch	Total Salmon	Average Catch per Catch Record Card
Adams	1,074	16,428	6.54	484	138	622	0.58
Asotin	2,517	20,551	12.25	38	235	273	0.11
Benton	16,202	142,475	11.37	3,586	633	4,219	0.26
Chelan	2,863	66,616	4.30	1,060	771	1,831	0.64
Clallam	12,260	64,525	19.00	4,239	9,620	13,859	1.13
Clark	39,676	345,238	11.49	22,928	7,217	30,145	0.76
Columbia	728	4,064	17.91	23		23	0.03
Cowlitz	18,641	92,948	20.06	14,720	3,523	18,243	0.98
Douglas	1,497	32,603	4.59	722	187	909	0.61
Ferry	73	7,260	1.01	23		23	0.32
Franklin	4,829	49,347	9.79	983	487	1,470	0.30
Garfield	46	2,397	1.92				
Grant	2,298	74,698	3.08	491	536	1,027	0.45
Grays Harbor	8,433	67,194	12.55	4,469	4,619	9,088	1.08
Island	8,360	71,558	11.68	238	3,353	3,591	0.43
Jefferson	4,851	25,953	18.69	745	3,231	3,976	0.82
King	91,288	1,737,034	5.26	32,918	36,149	69,067	0.76
Kitsap	18,309	231,969	7.89	2,058	10,829	12,887	0.70
Kittitas	1,611	33,362	4.83	591	252	843	0.52
Klickitat	2,535	19,161	13.23	1,029	97	1,126	0.44
Lewis	10,085	68,600	14.70	7,371	2,809	10,180	1.01
Lincoln	337	10,184	3.31	23	211	234	0.69
Mason	4,587	49,405	9.28	852	3,207	4,059	0.88
Okanogan	887	39,564	2.24	184	162	346	0.39
Pacific	4,110	20,984	19.59	2,534	4,790	7,324	1.78
Pend Oreille	191	11,732	1.63	38		38	0.20
Pierce	42,333	700,820	6.04	13,668	21,699	35,367	0.84
San Juan	1,802	14,077	12.80	92	633	725	0.40
Skagit	16,611	102,979	16.13	3,056	4,311	7,367	0.44
Skamania	1,329	9,872	13.46	929		929	0.70
Snohomish	59,600	606,024	9.83	10,612	26,968	37,580	0.63
Spokane	8,592	417,939	2.06	1,421	1,786	3,207	0.37
Stevens	728	40,066	1.82	92	284	376	0.52
Thurston	18,868	207,355	9.10	7,494	10,009	17,503	0.93
Wahkiakum	441	3,824	11.53	200	65	265	0.60
Walla Walla	5,843	55,180	10.59	860	138	998	0.17
Whatcom	17,485	166,814	10.48	5,337	4,505	9,842	0.56
Whitman	1,811	40,740	4.45	46	97	143	0.08
Yakima	15,601	222,581	7.01	7,502	1,356	8,858	0.57
Unknown WA	6,772			2,480	1,607	4,087	0.60
Washington Total	456,104	5,894,121	7.74	156,136	166,514	322,650	0.71
Other State Total	80,967			35,654	38,544	78,426	0.97
Canada	2,790			15	89	104	0.04
Foreign	36						
Grand Total	539,897	5,894,121	9.16	191,805	205,147	401,180	0.74

Note: The figures do not accurately multiply across because of bias adjustment factor and rounding of numbers.
Source: Intercensal estimates of the Total Resident Population by County (<http://www.ofm.wa.gov/pop/april1/finalpop2003.xls>).

Table 27. 2000-2001 Frequency Distribution of Estimated Salmon Catch Record Cards and Catch

# Salmon per Catch Record Card	# of Cards	Cumulative # of Cards	Percent Cards	Cumulative Percent Cards	Total Catch	Cumulative Total Catch	Percent Catch	Cumulative Percent Catch
0	442,405	442,405	81.94	81.94				
1	26,163	468,568	4.85	86.79	24,843	24,843	6.19	6.19
2	24,106	492,674	4.46	91.25	45,780	70,623	11.41	17.60
3	9,936	502,610	1.84	93.09	28,305	98,928	7.06	24.66
4	9,549	512,159	1.77	94.86	36,269	135,197	9.04	33.70
5	4,808	516,967	0.89	95.75	22,827	158,024	5.69	39.39
6	4,808	521,775	0.89	96.64	27,392	185,416	6.83	46.22
7	3,112	524,887	0.58	97.22	20,684	206,100	5.16	51.37
8	2,431	527,318	0.45	97.67	18,464	224,564	4.60	55.98
9	1,696	529,014	0.31	97.98	14,495	239,059	3.61	59.59
10	1,643	530,657	0.30	98.29	15,598	254,657	3.89	63.48
11	1,295	531,952	0.24	98.53	13,531	268,188	3.37	66.85
12	1,095	533,047	0.20	98.73	12,479	280,667	3.11	69.96
13	895	533,942	0.17	98.90	11,046	291,713	2.75	72.71
14	761	534,703	0.14	99.04	10,120	301,833	2.52	75.24
15	721	535,424	0.13	99.17	10,272	312,105	2.56	77.80
16	654	536,078	0.12	99.29	9,942	322,047	2.48	80.27
17	507	536,585	0.09	99.39	8,192	330,239	2.04	82.32
18	507	537,092	0.09	99.48	8,674	338,913	2.16	84.48
19	334	537,426	0.06	99.54	6,024	344,937	1.50	85.98
20	174	537,600	0.03	99.57	3,297	348,234	0.82	86.80
21	321	537,921	0.06	99.63	6,391	354,625	1.59	88.40
22	307	538,228	0.06	99.69	6,417	361,042	1.60	90.00
23	187	538,415	0.03	99.73	4,083	365,125	1.02	91.01
24	254	538,669	0.05	99.77	5,783	370,908	1.44	92.45
25	374	539,043	0.07	99.84	8,877	379,785	2.21	94.67
26	761	539,804	0.14	99.98	18,794	398,579	4.68	99.35
27	67	539,871	0.01	99.995	1,712	400,291	0.43	99.78
29	13	539,884	0.00	99.998	368	400,659	0.09	99.87
41	13	539,897	0.00	100.00	520	401,179	0.13	100.00
Totals	539,897		100.00		401,179		100.00	

Note: The figures do not accurately multiply across because of bias adjustment factor and rounding of numbers.

Table 28A. 2000-2001 Sport Salmon Technical Catch Data

Records on File	Estimates and Calculations
Name and Address File	137,924
Catch Record Cards in Sample Returns	63,495
Correction Data	
Correction Factor Percentage of voluntarily returned catch records with matching names and addresses	2,910 / 2,983 = 0.976
Name/Address Corrected for Dealer Non-Response	137,924 / .976 = 141,316
Estimated Number of Catch Records Issued (Num Books / Corrfctr * x Avg # CRC/Book * 4)	6113 / .976 * 21.55 * 21.55 * 4 = 539,898
Catch Expansion Factor	539,898 / 63,495 = 8.52

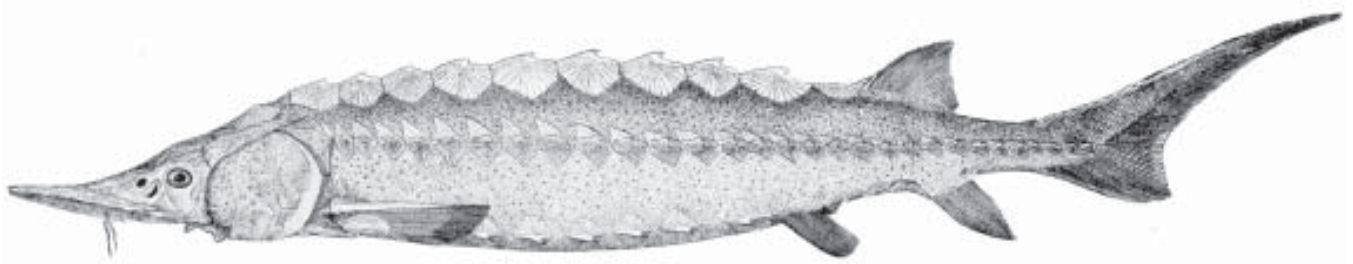
Table 28B. 2000-2001 Sport Salmon Inventory of Catch Record Cards Received

Response Code*	Number of Cards with Catch		Number of Cards without Catch		Total Cards & Letters	Number of Salmon			Catch Per Card		
	Catch Records	Reminder Letters	Catch Records	Reminder Letters		Catch Records	Reminder Letters	Total Salmon	Catch Records	Reminder Letters	Total Cards & Letters
0	871		1,293		2,164	3,715		3,715	1.72		1.72
1	4,770	1,529	10,922	14,861	32,082	23,483	4,768	28,251	1.50	0.29	0.88
2	1,125	1,178	2,373	12,806	17,482	5,134	3,821	8,955	1.47	0.27	0.51
3	348	604	889	6,383	8,224	1,318	2,046	3,364	1.07	0.29	0.41
4	1,093		2,444	6	3,543	5,999		5,999	1.70		1.69
Total	8,207	3,311	17,921	34,056	63,495	39,649	10,635	50,284	1.52	0.28	0.79

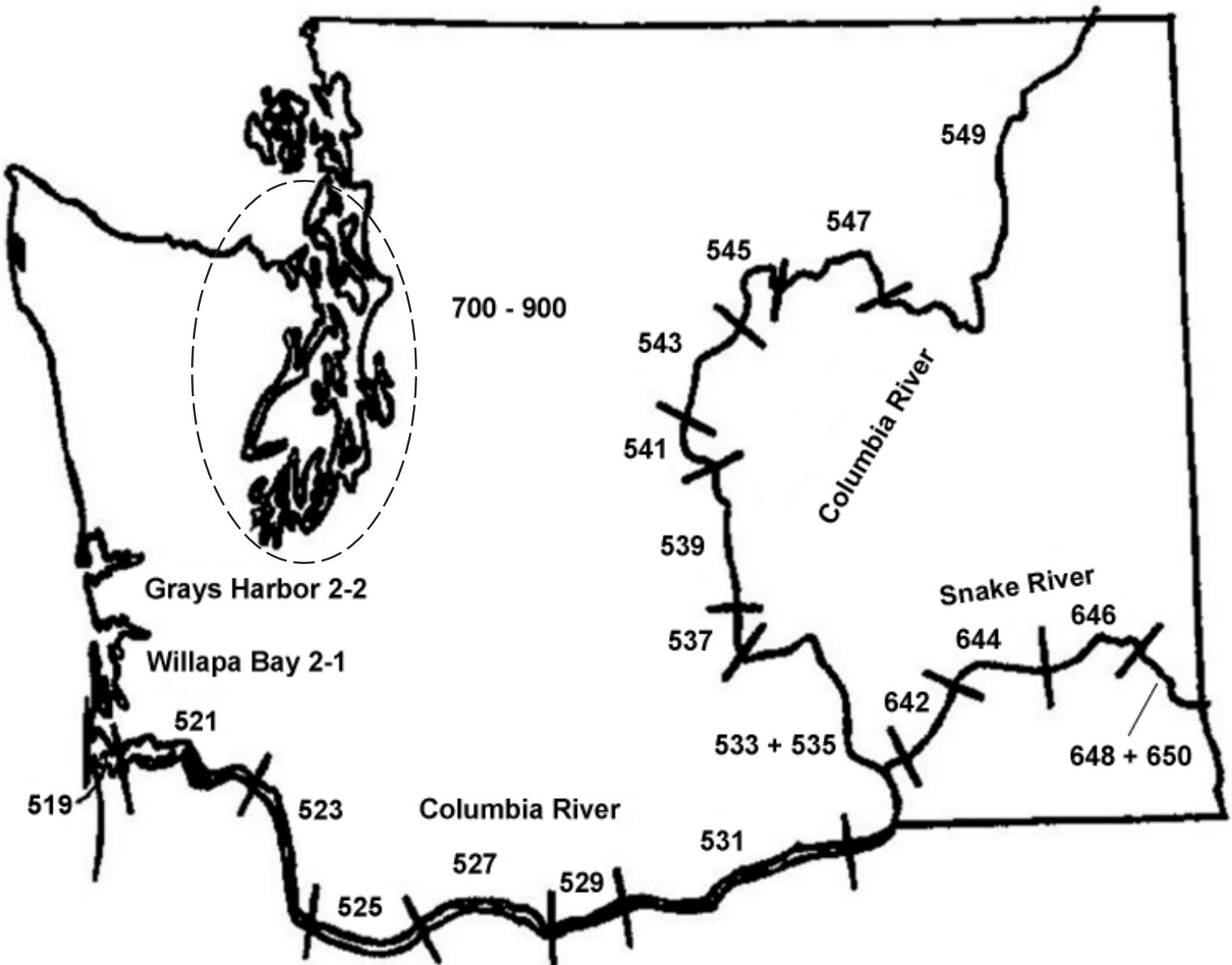
***Response Codes**

- 0 - Prior to Reminder
- 1 - After 1st Reminder
- 2 - After 2nd Reminder
- 3 - After 3rd Reminder
- 4 - From Sporting Goods Dealer

STURGEON



MAP OF STURGEON CATCH CARD AREAS



Description of Sturgeon Catch Record Card Areas

Columbia River

519	Buoy 10 to Megler - Astoria Bridge
521	Megler - Astoria Bridge to Longview Bridge
523	Longview Bridge to I-5 Bridge
525	I-5 Bridge to Bonneville Dam
527	Bonneville to the Dalles Dam
529	The Dalles Dam to John Day Dam
531	John Day to McNary Dam
533 + 535	McNary Dam to Priest Rapids Dam
537	Priest Rapids Dam to Wanapum Dam
539	Wanapum to Rock Island Dam
541	Rock Island to Rocky Reach Dam
543	Rocky Reach to Wells Dam
545	Wells to Chief Joseph Dam
547	Chief Joseph to Grand Coulee Dam
549	Grand Coulee Dam to Canadian Border

Snake River

642	Ice Harbor to Lower Monumental Dam
644	Lower Monumental to Little Goose Dam
646	Little Goose to Lower Granite Dam
648 + 650	Lower Granite Dam to Idaho Border

Other - include Puget Sound

2-1	Willapa Bay
2-2	Grays Harbor
700 - 900	Puget Sound

Table 29. 2000-2001 Sport Sturgeon Catch, by Area and Month

COLUMBIA RIVER SYSTEMS															
Catch Area	Species	2000										2001			Total
		Apr	May	Jun	Jul	Aug	Sep	Oct	Nov	Dec	Jan	Feb	Mar		
Chinook River	White			26											
	Total			26											
Columbia R 01:*	Green			5	3	4									
	White	20	579	2,551	2,924	1,176	644	24							
	Total	20	579	2,556	2,927	1,180	644	24							
Columbia R 02:*	Green			4	2	3									
	White	95	671	2,606	2,985	1,199	657	44					3		
	Total	95	671	2,610	2,987	1,202	657	44					3		
Columbia R 03:*	White	281	70	35	22	11	101	161	229	237	363	162	174	1,846	
	Total	281	70	35	22	11	101	161	229	237	363	162	174	1,846	
Columbia R 04:*	White	274	251	275	127	207	439	495	96	54	31	168	596	3,013	
	Total	274	251	275	127	207	439	495	96	54	31	168	596	3,013	
Columbia R 05:	White	44	26		17	9	26	9		9	122	113	149	524	
	Total	44	26		17	9	26	9		9	122	113	149	524	
Columbia R 06:	White	26	96	52	17		18				17	44	79	349	
	Total	26	96	52	17		18				17	44	79	349	
Columbia R 07:	White	17	9	52	61	70		17	9				9	244	
	Total	17	9	52	61	70		17	9				9	244	
Columbia R 08: McNary Dam - Hwy 395 Bridge at Pasco	White	9		9	26	26	17	17				9	9	122	
	Total	9		9	26	26	17	17				9	9	122	
Columbia R 09: Hwy 395 Bridge to Priest Rapids Dam	White	26	35	70	44	44	79	26	9				61	394	
	Total	26	35	70	44	44	79	26	9				61	394	
Columbia R 10:	White		17			9	9	9						44	
	Total		17			9	9	9						44	
Columbia R 12:	White					9								9	
	Total					9								9	
Columbia R 15: Chief Joseph to Grand Coulee Dam	White				9									9	
	Total				9									9	
Cowlitz R below Mayfield Dam	White	18		17	9	18		9		9	17	9		106	
	Total	18		17	9	18		9		9	17	9		106	
Deep River (Wahkiakum Co)	White	9	17	35	61	105	9	17						253	
	Total	9	17	35	61	105	9	17						253	
Elochoman River	White						9							9	
	Total						9							9	
Lewis River (below E Fork)	White			9										9	
	Total			9										9	
Little White Salmon River & Drano Lake	White					17				9	9			35	
	Total					17				9	9			35	

Table 29. 2000-2001 Sport Sturgeon Catch, by Area and Month

COLUMBIA RIVER SYSTEMS														
Catch Area	Species	2000									2001			Total
		Apr	May	Jun	Jul	Aug	Sep	Oct	Nov	Dec	Jan	Feb	Mar	
Snake R 1: below Ice Harbor Dam	White			17										17
	Total			17										17
Snake R 2: Ice Harbor to Lwr Monumental Dam	White			9	9	9								27
	Total			9	9	9								27
Snake R 3: Lower Monumental to Little Goose Dam	White		26	61	61	17	26							191
	Total		26	61	61	17	26							191
Snake R 4: Little Goose to Lower Granite Dam	White	17		44	9									70
	Total	17		44	9									70
Snake R 5: Lower Granite Dam to Interstate Bridge Clarkston	White									9				9
	Total									9				9
Snake R 6: upstream of the Interstate Bridge Clarkston	White	9			9				9					27
	Total	9			9				9					27
Toutle River No Fork	White			17	9									26
	Total			17	9									26
Columbia River Totals	Green			9	5	7								21
	White	845	1,797	5,885	6,399	2,926	2,034	837	343	327	559	505	1,080	23,537
	Total	845	1,797	5,894	6,404	2,933	2,034	837	343	327	559	505	1,080	23,558

* These estimates are based on creel survey data.

Table 29. 2000-2001 Sport Sturgeon Catch, by Area and Month

COASTAL RIVER SYSTEMS															
Catch Area	Species	2000										2001			Total
		Apr	May	Jun	Jul	Aug	Sep	Oct	Nov	Dec	Jan	Feb	Mar		
Area 2.1: Willapa Bay	White	17	9	9	9								17	35	96
	Total	17	9	9	9								17	35	96
Area 2.2: Grays Harbor	White		17	9	61	9	9								105
	Total		17	9	61	9	9								105
Area 3: Quillayute River	White		9												9
	Total		9												9
Bear River (Pacific Co)	White													9	9
	Total													9	9
Calawah River	White				26									9	35
	Total				26									9	35
Chehalis R above Black R	White						17								17
	Total						17								17
Chehalis R below Black R	Green			9		9									18
	White	9	17		44	17	44	35	17	35	18	35	61	332	
	Total	9	17	9	44	26	44	35	17	35	18	35	61	350	
Chehalis River So Fork	White						9								9
	Total						9								9
Cloquallam Creek	White		9		9										18
	Total		9		9										18
Elk River (Grays Harbor Co)	White			9											9
	Total			9											9
Humptulips River	White									9					9
	Total									9					9
Humptulips River East Fork	White			9	26	26	17						9	87	
	Total			9	26	26	17						9	87	
Johns River	White				9										9
	Total				9										9
Naselle River	White	9	35	17	26	52	9	9	9		9	35	9	219	
	Total	9	35	17	26	52	9	9	9		9	35	9	219	
Nemah River	White			17											17
	Total			17											17
Newaukum River	White				9										9
	Total				9										9
Skookumchuck River	White			9											9
	Total			9											9
Sol Duc River	White												9	9	
	Total												9	9	
Waatch River	White		9									9	9	27	
	Total		9									9	9	27	

Table 29. 2000-2001 Sport Sturgeon Catch, by Area and Month

COASTAL RIVER SYSTEMS															
Catch Area	Species	2000										2001			Total
		Apr	May	Jun	Jul	Aug	Sep	Oct	Nov	Dec	Jan	Feb	Mar		
Willapa R So Fork	White			17	9		9							9	44
	Total			17	9		9							9	44
Willapa River	Green			9											9
	White		9	35	44	9					35		79	211	
	Total		9	44	44	9					35		79	220	
Coastal River Totals	Green			18		9								27	
	White	35	114	131	272	113	114	44	35	35	62	96	238	1,289	
	Total	35	114	149	272	122	114	44	35	35	62	96	238	1,316	
PUGET SOUND RIVER SYSTEMS															
Area 6: E Juan de Fuca	White			9										9	
	Total			9										9	
Area 8.2: Port Susan and Port Gardner	Green							9	17					26	
	White	26	9				9							44	
	Total	26	9				9	9	17					70	
Area 9: Admiralty Inlet	Green				9									9	
	White					9								9	
	Total				9	9								18	
Skagit River	White										9			9	
	Total										9			9	
Snohomish River	White		17		35								35	87	
	Total		17		35								35	87	
Puget Sound River Totals	Green				9			9	17					35	
	White	26	26	9	35	9	9	9		9			35	158	
	Total	26	26	9	44	9	9	9	17	9			35	193	
STATEWIDE TOTALS															
Total	Green			27	14	16		9	17					83	
	White	906	1,937	6,025	6,706	3,048	2,157	881	378	371	621	601	1,353	24,984	
	Total	906	1,937	6,052	6,720	3,064	2,157	890	395	371	621	601	1,353	25,067	

Table 30. 2000-2001 Washington Sport Sturgeon Fishing, by Residence

County of Residence	# Catch Record Cards	Population by County	% Catch Record Card Holders	Total Sturgeon	Average Catch per Catch Record Card
Adams	1,303	16,428	7.93	53	0.04
Asotin	3,053	20,551	14.86	18	0.01
Benton	19,652	142,475	13.79	374	0.02
Chelan	3,472	66,616	5.21	133	0.04
Clallam	14,866	64,525	23.04	294	0.02
Clark	48,119	345,238	13.94	7,386	0.15
Columbia	883	4,064	21.73	9	0.01
Cowlitz	22,611	92,948	24.33	4,004	0.18
Douglas	1,816	32,603	5.57		0.00
Ferry	88	7,260	1.21		0.00
Franklin	5,857	49,347	11.87	240	0.04
Garfield	55	2,397	2.29		0.00
Grant	2,788	74,698	3.73	133	0.05
Grays Harbor	10,229	67,194	15.22	498	0.05
Island	10,141	71,558	14.17	53	0.01
Jefferson	5,890	25,953	22.69	44	0.01
King	110,729	1,737,034	6.37	1,691	0.02
Kitsap	22,208	231,969	9.57	294	0.01
Kittitas	1,954	33,362	5.86	53	0.03
Klickitat	3,075	19,161	16.05	151	0.05
Lewis	12,233	68,600	17.83	1,406	0.11
Lincoln	408	10,184	4.01	27	0.07
Mason	5,564	49,405	11.26	231	0.04
Okanogan	1,076	39,564	2.72		0.000
Pacific	4,985	20,984	23.76	3,337	0.67
Pend Oreille	232	11,732	1.98	27	0.12
Pierce	51,354	700,820	7.33	1,228	0.02
San Juan	2,186	14,077	15.53	44	0.02
Skagit	20,149	102,979	19.57	36	0.00
Skamania	1,612	9,872	16.33	178	0.11
Snohomish	72,298	606,024	11.93	587	0.01
Spokane	10,422	417,939	2.49	383	0.04
Stevens	883	40,066	2.20	107	0.12
Thurston	22,887	207,355	11.04	828	0.04
Wahkiakum	535	3,824	13.99	142	0.27
Walla Walla	7,088	55,180	12.85	196	0.03
Whatcom	21,209	166,814	12.71	71	0.003
Whitman	2,197	40,740	5.39	18	0.01
Yakima	18,923	222,581	8.50	392	0.02
Unknown WA	8,247			374	0.05
Washington Total	553,277	5,894,121	9.39	25,040	0.05
Other State Total	458			27	0.06
Canada	569				
Foreign	105				
Grand Total	554,409	5,894,121	9.41	25,067	0.05

Note: The figures do not accurately multiply across because of bias adjustment factor and rounding of numbers.
Source: Intercensal estimates of the Total Resident Population by County (<http://www.ofm.wa.gov/pop/april1/finalpop2003.xls>).

Table 31. 2000-2001 Frequency Distribution of Estimated Sturgeon Catch Record Cards and Catch

# Sturgeon per Catch Record Card	# of Cards	Cumulative # of Cards	Percent Cards	Cumulative Percent Cards	Total Catch	Cumulative Total Catch	Percent Catch	Cumulative Percent Catch
0	537,729	537,729	96.991	96.991	0	0	0.00	0.00
1	9,624	547,353	1.736	98.727	7,411	7,411	29.56	29.56
2	3,715	551,068	0.670	99.397	5,722	13,133	22.83	52.39
3	1,349	552,417	0.243	99.641	3,116	16,249	12.43	64.82
4	670	553,087	0.121	99.761	2,064	18,313	8.23	73.05
5	470	553,557	0.085	99.846	1,809	20,122	7.22	80.27
6	322	553,879	0.058	99.904	1,488	21,610	5.94	86.21
7	209	554,088	0.038	99.942	1,126	22,736	4.49	90.70
8	96	554,184	0.017	99.959	590	23,326	2.35	93.05
9	78	554,262	0.014	99.973	543	23,869	2.17	95.22
10	104	554,366	0.019	99.992	804	24,673	3.21	98.42
11	26	554,392	0.005	99.997	221	24,894	0.88	99.31
12	9	554,401	0.002	99.998	80	24,974	0.32	99.63
14	9	554,410	0.002	100.00	94	25,068	0.37	100.00
Total	554,410		100.00		25,068		100.00	

Note: The figures do not accurately multiply across because of bias adjustment factor and rounding of numbers.

Table 32A. 2000-2001 Sport Sturgeon Technical Catch Data

Records on File	Estimates and Calculations
Name and Address File	137,924
Catch Record Cards in Sample Returns	63,438
Correction Data	
Correction Factor	2,909 / 2,923 = 0.995
Percentage of voluntarily returned catch records with matching names and addresses	
Name/Address Corrected for Dealer Non-Response	137,924 / .995 = 138,617
Estimated Number of Catch Records Issued (Num Books / Corrfctr * x Avg # CRC/Book * 4)	6113 / .995 * 22.56 * 4 = 554,409
Catch Expansion Factor	554,409 / 63,438 = 8.73

Table 32B. 2000-2001 Sport Sturgeon Inventory of Catch Record Cards Received

Response Code*	Number of Cards with Catch		Number of Cards without Catch		Total Cards & Letters	Number of Sturgeon			Catch Per Card		
	Catch Records	Reminder Letters	Catch Records	Reminder Letters		Catch Records	Reminder Letters	Total Sturgeon	Catch Records	Reminder Letters	Cards & Letters
0	161		2,003		2,164	260		260	0.12		0.12
1	746	235	14,944	16,153	32,078	1,475	474	1,949	0.09	0.03	0.06
2	160	202	3,337	13,778	17,477	379	322	701	0.11	0.02	0.04
3	53	123	1,184	6,863	8,223	107	223	330	0.09	0.03	0.04
4	220		3,315	6	3,541	483		483	0.14		0.14
Total	1,340	560	24,783	36,800	63,483	2,704	1,019	3,723	0.10	0.03	0.06

***Response Codes**

- 0 - Prior to Reminder
- 1 - After 1st Reminder
- 2 - After 2nd Reminder
- 3 - After 3rd Reminder
- 4 - From Sporting Goods Dealer

STEELHEAD

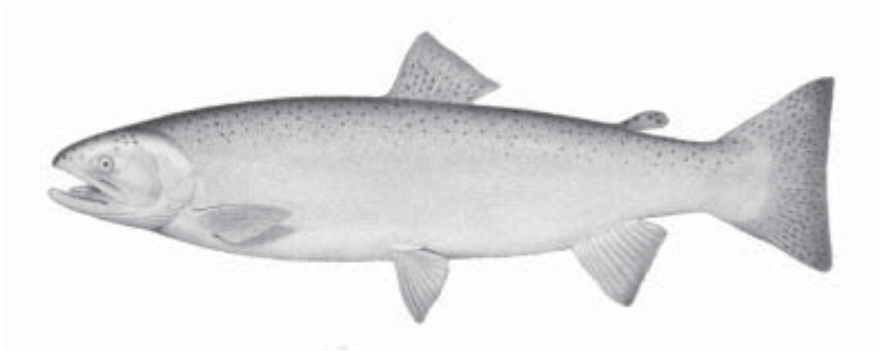


Table 33. 2000-2001 Steelhead Sport Catch, by Area and Month

COLUMBIA RIVER AND TRIBUTARIES ¹																		
System	Catch Area	Race	Marked/ Unmarked	2000								2001			Total			
				Apr	May	Jun	Jul	Aug	Sep	Oct	Nov	Dec	Jan	Feb		Mar		
ABERNATHY CREEK	Abernathy Creek	SSH	Marked		6		6		6							18		
			Unmarked		0		0		0							0		
			Total		6		6		6							18		
		WSH	Marked									4					12	
			Unmarked									0		4	4		0	
			Total									4		4	4		12	
CEDAR CREEK Methow	Cedar Creek (Okanogan Co.)	SSH	Marked								6					6		
			Unmarked								0					0		
			Total									6					6	
CHINOOK RIVER	Chinook River	SSH	Marked				6				12			6		24		
			Unmarked				0				0		0			0		
			Total				6				12		6				24	
COLUMBIA RIVER	Bouy 10 to Megler- Astoria Bridge	SSH	Marked		40	40	97	109	16	12						314		
			Unmarked		0	0	0	0	0	0						0		
			Total		40	40	97	109	16	12							314	
		WSH	Marked									8	0				8	
			Unmarked									4	4				8	
			Total									12	4				16	
	Megler-Astoria to Longview Br.	SSH	Marked		408	1,433	1,393	1,099	218	8							4,559	
			Unmarked		0	29	25	8	0	0							62	
			Total		408	1,462	1,418	1,107	218	8							4,621	
		WSH	Marked		4							4	4		4	12	114	142
			Unmarked		0							0	0		0	0	4	4
			Total		4							4	4		4	12	118	146
	Longview Br. To I-5 Bridge	SSH	Marked		24	186	1,010	1,321	246	12							2,799	
			Unmarked		0	4	40	8	0	0							52	
			Total		24	190	1,050	1,329	246	12							2,851	
		WSH	Marked		8							4	12		12	12	45	93
			Unmarked		0							0	4		0	0	0	4
			Total		8							4	16		12	12	45	97
I-5 Bridge to Bonneville Dam	SSH	Marked			24	166	214	93	12							509		
		Unmarked			0	4	0	0	0							4		
		Total			24	170	214	93	12							513		
	WSH	Marked										29			20	49		
		Unmarked										4			4	8		
		Total										33			24	57		

Table 33. 2000-2001 Steelhead Sport Catch, by Area and Month

COLUMBIA RIVER AND TRIBUTARIES ¹																	
System	Catch Area	Race	Marked/ Unmarked	2000								2001			Total		
				Apr	May	Jun	Jul	Aug	Sep	Oct	Nov	Dec	Jan	Feb		Mar	
COLUMBIA RIVER (continued)	Below Bonneville Dam Subtotals	SSH	Marked	472	1,683	2,666	2,743	573	44							8,181	
			Unmarked	0	33	69	16	0	0							118	
			Total	472	1,716	2,735	2,759	573	44							8,299	
		WSH	Marked	12							16	45	16	24	179	292	
			Unmarked	0							4	12	0	0	8	24	
			Total	12							20	57	16	24	187	316	
	Bonneville Dam to Dalles Dam	SSH	Marked		16	16	61	263	77	48	20					4	505
			Unmarked		0	0	0	4	0	0	4					0	8
			Total		16	16	61	267	77	48	24					4	513
	The Dalles Dam to John Day Dam	SSH	Marked		4	8	32	44	113	40	8	32	117	65	40	503	
			Unmarked		0	0	0	0	0	0	0	0	0	4	0	4	
			Total		4	8	32	44	113	40	8	32	117	69	40	507	
	John Day Dam to McNary Dam	SSH	Marked	4		4	4	44	69	202	162	61	28		44	622	
			Unmarked	0		0	0	4	0	4	0	0	0		0	8	
			Total	4		4	4	48	69	206	162	61	28		44	630	
	McNary Dam to Hwy 395 Bridge @ Pasco	SSH	Marked			4	4	12	610	1,454	445	61	77	20	4	2,691	
			Unmarked			0	0	0	16	28	36	0	0	0	0	80	
			Total			4	4	12	626	1,482	481	61	77	20	4	2,771	
	Hwy 395 Bridge to Priest Rapids Dam	SSH	Marked		12	81	190	20	36	1,038	574	368	8		4	2,331	
			Unmarked		0	0	0	0	4	32	0	0	0		0	36	
Total				12	81	190	20	40	1,070	574	368	8		4	2,367		
Priest Rapids Dam to Wanapum Dam	SSH	Marked											4		4		
		Unmarked											0		0		
		Total											4		4		
Rock Island Dam to Rocky Reach Dam	SSH	Marked				4									4		
		Unmarked				0									0		
		Total				4									4		
Rocky Reach Dam to Wells Dam	SSH	Marked								4					4		
		Unmarked								0					0		
		Total								4					4		
Wells Dam to Chief Joseph Dam	SSH	Marked									4	4			8		
		Unmarked									0	0			0		
		Total									4	4			8		
Columbia River Subtotals	SSH	Marked	4	504	1,796	2,961	3,126	1,478	2,830	1,213	526	230	89	96	14,853		
		Unmarked	0	0	33	69	24	20	64	40	0	0	4	0	254		
		Total	4	504	1,829	3,030	3,150	1,498	2,894	1,253	526	230	93	96	15,107		
	WSH	Marked	12								16	45	16	24	179	292	
		Unmarked	0								4	12	0	0	8	24	
Total	12									20	57	16	24	187	316		

Table 33. 2000-2001 Steelhead Sport Catch, by Area and Month

COLUMBIA RIVER AND TRIBUTARIES ¹																			
System	Catch Area	Race	Marked/ Unmarked	2000								2001			Total				
				Apr	May	Jun	Jul	Aug	Sep	Oct	Nov	Dec	Jan	Feb		Mar			
COWLITZ RIVER	Alder Creek (Cowlitz Co.)	WSH	Marked											14	14		28		
			Unmarked											0	0		0		
			Total												14	14		28	
	Blue Creek (Lewis Co.)	SSH	Marked			31	23	23	15	39									131
			Unmarked			0	0	0	0	0									0
			Total			31	23	23	15	39									131
		WSH	Marked										30	338	54	6	6	434	
			Unmarked										0	12	0	0	0	12	
			Total										30	350	54	6	6	446	
	Cispus River	WSH	Marked												0			0	
			Unmarked												9			9	
			Total												9			9	
	Coweeman River	WSH	Marked												14	18	5	37	
			Unmarked												0	5	0	5	
			Total												14	23	5	42	
	Cowlitz River above Cowlitz Falls Dam ²	SSH	Marked				8	4	4									16	
			Unmarked				0	0	0									0	
			Total				8	4	4									16	
	WSH	Marked	0								14	0	9				23		
		Unmarked	5								0	5	0				10		
		Total	5								14	5	9				33		
Cowlitz River below Mayfield Dam	SSH	Marked		501	2,158	2,519	1,143	409	329								7,059		
		Unmarked		4	24	32	12	0	0								72		
		Total		505	2,182	2,551	1,155	409	329								7,131		
	WSH	Marked	399									732	1,956	624	225	431	4,367		
		Unmarked	5									19	80	9	5	5	123		
		Total	404									751	2,036	633	230	436	4,490		
Mayfield Dam to Cowlitz Falls Dam ²	SSH	Marked			4	24	12	12	8								60		
		Unmarked			12	8	8	0	0								28		
		Total			16	32	20	12	8								88		
	WSH	Marked										9	14	14	5		42		
		Unmarked										0	0	0	0		0		
		Total										9	14	14	5		42		
Green River (Cowlitz Co.)	SSH	Marked			237	201	36	32	32								538		
		Unmarked			0	0	0	0	0								0		
		Total			237	201	36	32	32								538		
	WSH	Marked	5									33	5	23			66		
		Unmarked	0									0	0	0			0		
		Total	5									33	5	23			66		

Table 33. 2000-2001 Steelhead Sport Catch, by Area and Month

COLUMBIA RIVER AND TRIBUTARIES¹																	
System	Catch Area	Race	Marked/ Unmarked	2000						2001			Total				
				Apr	May	Jun	Jul	Aug	Sep	Oct	Nov	Dec		Jan	Feb	Mar	
COWLITZ RIVER (continued)	Lacamas Creek (Lewis Co.)	SSH	Marked				4									4	
			Unmarked				0										0
			Total				4										4
	Olequa Creek	SSH	Marked								4						4
			Unmarked								0						0
			Total								4						4
		WSH	Marked										9				9
			Unmarked										0				0
			Total										9				9
	Tilton River	SSH	Marked			24	4	4	4	12							48
			Unmarked			0	0	0	0	0							0
			Total			24	4	4	4	12							48
		WSH	Marked									19	52	47	19	66	203
			Unmarked									0	0	0	0	0	0
			Total									19	52	47	19	66	203
Toutle River	SSH	Marked						4	4							8	
		Unmarked						0	0							0	
		Total						4	4							8	
Toutle River, North Fork	SSH	Marked				4	4	12								20	
		Unmarked				0	0	0								0	
		Total				4	4	12								20	
	WSH	Marked										9				9	
		Unmarked										0				0	
		Total										9				9	
Toutle River, South Fork	SSH	Marked			261	108	28	80	100							577	
		Unmarked			0	0	0	0	0							0	
		Total			261	108	28	80	100							577	
	WSH	Marked									56	9	5	5		75	
		Unmarked									0	0	0	0		0	
		Total									56	9	5	5		75	
Cowlitz River System Totals	SSH	Marked		501	2,715	2,895	1,258	572	524							8,465	
		Unmarked		4	36	40	20	0	0							100	
		Total		505	2,751	2,935	1,278	572	524							8,565	
	WSH	Marked	404								902	2,411	808	265	503	5,293	
		Unmarked	10								19	106	14	5	5	159	
		Total	414								921	2,517	822	270	508	5,452	
DEEP RIVER	Deep River	WSH	Marked									4				15	
			Unmarked									0					0
			Total									4					15

Table 33. 2000-2001 Steelhead Sport Catch, by Area and Month

COLUMBIA RIVER AND TRIBUTARIES ¹																		
System	Catch Area	Race	Marked/ Unmarked	2000								2001			Total			
				Apr	May	Jun	Jul	Aug	Sep	Oct	Nov	Dec	Jan	Feb		Mar		
ELOCHOMAN RIVER	Elochoman River	SSH	Marked			197	31	8	15	61							312	
			Unmarked			0	15	38	0	0								53
			Total			197	46	46	15	61								365
		WSH	Marked									17	403	187	44	17		668
			Unmarked									0	9	0	4	0		13
			Total									17	412	187	48	17		681
GERMANY CREEK	Germany Creek	WSH	Marked									11			4	15		
			Unmarked									0			0	0		
			Total									11			4	15		
GRANDE RONDE	Grande Ronde River	SSH	Marked	84	5			5	98	997	550	383	516	1,267	1,415	5,320		
			Unmarked	0	0			0	5	15	15	0	10	20	5	70		
			Total	84	5			5	103	1,012	565	383	526	1,287	1,420	5,390		
GRAYS RIVER	Grays River and West Fork	SSH	Marked						9							9		
			Unmarked						0							0		
			Total						9							9		
		WSH	Marked										140	68	25	36	269	
			Unmarked										0	0	0	0	0	
			Total										140	68	25	36	269	
KALAMA RIVER	Kalama River above Kalama Falls Hatchery	SSH	Marked		13	19		6								38		
			Unmarked		0	0		0								0		
			Total		13	19		6								38		
		WSH	Marked									5	5	5	5		20	
			Unmarked									0	0	0	0		0	
			Total									5	5	5	5		20	
	Kalama River below Kalama Falls Hatchery	SSH	Marked		392	917	519	221	126	107							2,282	
			Unmarked		13	6	0	0	0	19							38	
			Total		405	923	519	221	126	126							2,320	
		WSH	Marked		19								73	243	97	68	141	641
			Unmarked		0								0	0	5	5	10	20
			Total		19								73	243	102	73	151	661
Kalama River System Totals	SSH	Marked		405	936	519	227	126	107							2,320		
		Unmarked		13	6	0	0	0	19							38		
		Total		418	942	519	227	126	126							2,358		
	WSH	Marked		19								78	248	102	73	141	661	
		Unmarked		0								0	0	5	5	10	20	
		Total		19								78	248	107	78	151	681	

Table 33. 2000-2001 Steelhead Sport Catch, by Area and Month

COLUMBIA RIVER AND TRIBUTARIES¹																	
System	Catch Area	Race	Marked/ Unmarked	2000								2001			Total		
				Apr	May	Jun	Jul	Aug	Sep	Oct	Nov	Dec	Jan	Feb		Mar	
KLICKITAT RIVER	Klickitat River	SSH	Marked			126	390	421	168	205						1,310	
			Unmarked			0	21	16	11	11						59	
			Total			126	411	437	179	216						1,369	
	WSH	Marked									92			11		103	
		Unmarked									0			0		0	
		Total									92			11		103	
LEWIS RIVER	Cedar Creek (Clark Co.)	SSH	Marked							5						5	
			Unmarked							0						0	
			Total							5						5	
	Lewis River (below East Fork)	SSH	Marked		19	81	157	520	72	14						863	
			Unmarked		0	0	0	0	0	0						0	
			Total		19	81	157	520	72	14						863	
	WSH	Marked	8									8	42	17	4	79	
		Unmarked	0									0	0	0	0	0	
		Total	8									8	42	17	4	79	
	Lewis River, East Fork	SSH	Marked		38	95	19	5	5	19						181	
			Unmarked		0	0	0	0	0	0						0	
			Total		38	95	19	5	5	19						181	
	WSH	Marked	21									38	183	132	38	34	446
		Unmarked	0									0	4	0	0	0	4
		Total	21									38	187	132	38	34	450
Lewis River, North Fork	SSH	Marked		171	310	715	343	153	114						1,806		
		Unmarked		5	0	5	0	0	5						15		
		Total		176	310	720	343	153	119						1,821		
WSH	Marked	85									72	179	64	25	34	459	
	Unmarked	0									0	4	4	0	0	8	
	Total	85									72	183	68	25	34	467	
Lewis River System Totals	SSH	Marked		228	486	891	868	235	147						2,855		
		Unmarked		5	0	5	0	0	5						15		
		Total		233	486	896	868	235	152						2,870		
WSH	Marked	114									118	404	213	67	68	984	
	Unmarked	0									0	8	4	0	0	12	
	Total	114									118	412	217	67	68	996	
LITTLE WHITE SALMON RIVER	Little White Salmon River and Drano Lake	SSH	Marked	24		15	1,378	5,229	1,451	49	15					8,181	
			Unmarked	0		0	39	88	19	0	0					0	146
			Total	24		15	1,417	5,317	1,470	49	15					10	10
METHOW RIVER	Methow River	SSH	Marked				6					6				12	
			Unmarked				0					0					0
			Total				6					6					12

Table 33. 2000-2001 Steelhead Sport Catch, by Area and Month

COLUMBIA RIVER AND TRIBUTARIES ¹																					
System	Catch Area	Race	Marked/ Unmarked Total	2000										2001			Total				
				Apr	May	Jun	Jul	Aug	Sep	Oct	Nov	Dec	Jan	Feb	Mar						
OKANOGAN RIVER	Okanogan River	SSH	Marked													12				12	
			Unmarked														0				0
	Total															12				12	
	Similkameen River	SSH	Marked																6	6	
			Unmarked																	0	0
	Total																		6	6	
	Okanogan River System Totals	SSH	Marked													12			6	18	
			Unmarked														0			0	0
			Total														12			6	18
ROCK CREEK	Rock Creek (Skamania Co.)	SSH	Marked															18		18	
			Unmarked																0		0
			Total																18		18
SALMON CREEK	Salmon Creek (Clark Co.)	WSH	Marked										18	25		11	22	11	87		
			Unmarked											0	0		0	0	0	0	
			Total											18	25		11	22	11	87	
SKAMOKAWA CREEK	Skamokawa Creek	SSH	Marked									6						6			
			Unmarked										0						0		
			Total										6						6		
		WSH	Marked												4					4	
			Unmarked												0					0	
			Total											4					4		
SNAKE RIVER	Below Ice Harbor Dam	SSH	Marked		4					22	4			45	22	13	4	114			
			Unmarked		0						0	0		4	0	0	0	4			
			Total		4						22	4		49	22	13	4	118			
	Ice Harbor Dam to Lower Monumental Dam	SSH	Marked				4	9	256	530	353	221	106	79	208	1,766					
			Unmarked				0	0	0	31	9	0	0	9	0	49					
			Total				4	9	256	561	362	221	106	88	208	1,815					
	Lower Monumental Dam to Little Goose Dam	SSH	Marked			4	9	4	499	751	468	305	172	257	252	2,721					
			Unmarked			0	0	0	0	31	18	18	22	13	4	106					
			Total			4	9	4	499	782	486	323	194	270	256	2,827					
	Little Goose Dam to Lower Granite Dam	SSH	Marked			0			49	124	163	154	186	199	278	1,153					
			Unmarked			4			0	0	0	9	0	0	0	13					
			Total			4			49	124	163	163	186	199	278	1,166					
Lower Granite Dam to Interstate Bridge at Clarkston	SSH	Marked	4					13	504	839	716	310	490	194	225	3,295					
		Unmarked	0					0	31	53	44	4	0	0	9	141					
		Total	4					13	535	892	760	314	490	194	234	3,436					
Snake River above Clarkston	SSH	Marked	4					4	172	1,683	1,348	553	340	137	14	4,255					
		Unmarked	0					0	0	27	53	4	9	13	4	110					
		Total	4					4	172	1,710	1,401	557	349	150	18	4,365					

Table 33. 2000-2001 Steelhead Sport Catch, by Area and Month

COLUMBIA RIVER AND TRIBUTARIES¹																	
System	Catch Area	Race	Marked/ Unmarked	2000									2001			Total	
				Apr	May	Jun	Jul	Aug	Sep	Oct	Nov	Dec	Jan	Feb	Mar		
SNAKE RIVER (continued)	Snake River System Totals	SSH	Marked	8	4	4	13	30	1,502	3,931	3,048	1,588	1,316	879	981	13,304	
			Unmarked	0	0	4	0	0	31	142	124	39	31	35	17	423	
			Total	8	4	8	13	30	1,533	4,073	3,172	1,627	1,347	914	998	13,727	
TUCANNON RIVER	Tucannon River	SSH	Marked	6				6	59	196	178	101	12	12	24	594	
			Unmarked	0				0	0	6	6	6	0	0	0	18	
			Total	6				6	59	202	184	107	12	12	24	612	
WALLA WALLA RIVER	Mill Creek (Walla Walla Co.)	SSH	Marked							11	4					15	
			Unmarked							0	0					0	
			Total								11	4					15
	Touchet River & North Fork	SSH	Marked	36								14	7		22	343	422
			Unmarked	0								0	0		0	18	18
			Total	36									14	7		22	361
	Walla Walla River	SSH	Marked	4						115	79	209	130	147	173	130	987
			Unmarked	0						0	4	7	0	4	0	7	22
			Total	4						115	83	216	130	151	173	137	1,009
	Walla Walla River System Totals	SSH	Marked	40						115	90	227	137	147	195	473	1,424
			Unmarked	0						0	4	7	0	4	0	25	40
			Total	40						115	94	234	137	151	195	498	1,464
WASHOUGAL RIVER	Washougal River	SSH	Marked		131	321	219	68	10	24						773	
			Unmarked		0	0	10	0	0	0							10
			Total		131	321	229	68	10	24							783
	Washougal River	WSH	Marked	21								12	303	232	141	70	779
			Unmarked	0								0	8	0	0	0	8
			Total	21									12	311	232	141	70
	Washougal River, West Fork	SSH	Marked			15	24	5		15							59
			Unmarked			0	0	0		0							0
			Total			15	24	5		15							59
	Washougal River	WSH	Marked									4	17	4		25	
			Unmarked									0	0	0		0	
			Total										4	17	4		25
Washougal River, Little	SSH	Marked				5	39								44		
		Unmarked				0	0								0		
		Total				5	39								44		
Washougal River	WSH	Marked	4												4	8	
		Unmarked	0												0	0	
		Total	4												4	8	

Table 33. 2000-2001 Steelhead Sport Catch, by Area and Month

COLUMBIA RIVER AND TRIBUTARIES ¹																
System	Catch Area	Race	Marked/ Unmarked	2000								2001			Total	
				Apr	May	Jun	Jul	Aug	Sep	Oct	Nov	Dec	Jan	Feb		Mar
WASHOUGAL RIVER (continued)	Washougal River System Totals	SSH	Marked	131	336	248	112	10	39							876
			Unmarked	0	0	10	0	0	0							10
			Total	131	336	258	112	10	39							886
		WSH	Marked	25							16	320	236	141	74	812
Unmarked	0								0	8	0	0	0	8		
Total	25								16	328	236	141	74	820		
WHITE SALMON RIVER	Big White Salmon River	SSH	Marked	14	19	393	1,172	454	23						2,075	
			Unmarked	0	0	5	46	9	0						60	
			Total	14	19	398	1,218	463	23						2,135	
		WSH	Marked									13	30	13	56	
Unmarked										0	0	0	0			
Total										13	30	13	56			
WIND RIVER	Wind River above Shipherd Falls	SSH	Marked							3		3			6	
			Unmarked							0		0			0	
			Total							3		3			6	
	Wind River below Shipherd Falls	SSH	Marked	3		5	127	58	8	3			11		8	223
			Unmarked	0		3	11	0	3	0			0		6	23
			Total	3		8	138	58	11	3			11		14	246
Wind River System Totals	SSH	Marked	3		5	127	58	11	3	3		11		8	229	
		Unmarked	0		3	11	0	3	0	0		0		6	23	
		Total	3		8	138	58	14	3	3		11		14	252	
YAKIMA RIVER	Bumping River	SSH	Marked										6		6	
			Unmarked										0		0	
			Total										6		6	
	Yakima River	SSH	Marked	6												6
			Unmarked	0												0
			Total	6												6
Yakima River System Totals	SSH	Marked	6										6		12	
		Unmarked	0										0		0	
		Total	6										6		12	
COLUMBIA RIVER AND TRIBUTARY TOTALS	SSH	Marked	175	1,798	6,630	9,742	12,589	6,356	9,234	5,240	2,756	2,232	2,476	3,013	62,241	
		Unmarked	0	22	79	207	243	95	269	192	45	45	59	53	1,309	
		Total	175	1,820	6,709	9,949	12,832	6,451	9,503	5,432	2,801	2,277	2,535	3,066	63,550	
	WSH	Marked	574								1,261	4,028	1,656	699	1,053	9,271
		Unmarked	10								23	143	23	14	23	236
		Total	584								1,284	4,171	1,679	713	1,076	9,507

¹ The majority of the Columbia River System steelhead are summer runs.

² Fish caught in this section of the Cowlitz River System are considered resident trout.

Table 33. 2000-2001 Steelhead Sport Catch, by Area and Month

COAST RIVERS AND MARINE CATCH AREAS																			
System	Catch Area	Race	Marked/ Unmarked Total	2000								2001			Total				
				Apr	May	Jun	Jul	Aug	Sep	Oct	Nov	Dec	Jan	Feb		Mar			
BEAR RIVER	Bear River	WSH	Marked												0	0			
			Unmarked													4	4		
			Total														4	4	
CHEHALIS RIVER*	Black River (Thurston Co)	SSH	Marked					5									5		
			Unmarked					0										0	
			Total					5										5	
		WSH	Marked	Marked											4			4	
				Unmarked											0				0
				Total											4				4
	Cedar Creek (Grays Hbr Co)	SSH	Marked	Marked					5									5	
				Unmarked					0										0
				Total					5										5
	Chehalis River SF	WSH	Marked	Marked											28	12	12	52	
				Unmarked											4	4	0	8	
				Total											32	16	12	60	
	Chehalis River above Black River	SSH	Marked	Marked			0											0	
				Unmarked			5												5
				Total			5												5
		WSH	Marked	Marked											4	32	49	41	126
				Unmarked											0	0	0	20	20
				Total											4	32	49	61	146
	Chehalis River below Black River	SSH	Marked	Marked						10								10	
				Unmarked						0									0
				Total						10									10
WSH	Marked	Marked	4										45	150	190	57	446		
		Unmarked	0										8	16	16	8	48		
		Total	4										53	166	206	65	494		
Cloquallam Creek	SSH	Marked	Marked					25									25		
			Unmarked					0										0	
			Total					25										25	
Newaukum River and North Fork	SSH	Marked	Marked									5					5		
			Unmarked										0					0	
			Total											5				5	
	WSH	Marked	Marked											8	4	4	16		
			Unmarked											0	0	0	0		
Total												8	4	4	16				

Table 33. 2000-2001 Steelhead Sport Catch, by Area and Month

COAST RIVERS AND MARINE CATCH AREAS																			
System	Catch Area	Race	Marked/ Unmarked	2000								2001			Total				
				Apr	May	Jun	Jul	Aug	Sep	Oct	Nov	Dec	Jan	Feb		Mar			
CHEHALIS RIVER* (continued)	Satsop River & MF & EF	SSH	Marked					5								5			
			Unmarked					5									5		
			Total					10									10		
		WSH		Marked									12	24	65	109	125	335	
				Unmarked									0	0	0	8	0	8	
				Total									12	24	65	117	125	343	
	Skookumchuck River	SSH		Marked					5	5	10							20	
				Unmarked					0	0	0							0	
				Total					5	5	10							20	
		WSH		Marked	113										8		53	105	279
				Unmarked	0										0		4	12	16
				Total	113										8		57	117	295
Wishkah River	SSH		Marked				5					10					15		
			Unmarked				0					0						0	
			Total				5					10						15	
	WSH		Marked									8	4	4	8	4	28		
			Unmarked									0	0	0	0	0	0		
			Total									8	4	4	8	4	28		
Wynoochee River	SSH		Marked		5	324	368	234	55	80							1,066		
			Unmarked		0	0	0	0	0	0	0							0	
			Total		5	324	368	234	55	80								1,066	
	WSH		Marked	4								61	218	623	776	715	2,397		
			Unmarked	0									0	0	12	0	9	21	
			Total	4									61	218	635	776	724	2,418	
Chehalis River System Totals	SSH		Marked		5	324	368	279	70	95							1,141		
			Unmarked		0	5	0	5	0	0								10	
			Total		5	329	368	284	70	95								1,151	
	WSH		Marked	121								81	303	914	1,201	1,063	3,683		
			Unmarked	0									0	8	32	32	49	121	
			Total	121									81	311	946	1,233	1,112	3,804	
COPALIS RIVER*	Copalis River	SSH	Marked				6										6		
			Unmarked				0											0	
			Total				6											6	
	WSH		Marked	4								4		7		7	22		
			Unmarked	0									0		0		0		
			Total	4									4		7		7	22	
ELK RIVER*	Elk River (Grays Hbr Co)	WSH	Marked									4	4	21			29		
			Unmarked										0	0	0			0	
			Total										4	4	21			29	

Table 33. 2000-2001 Steelhead Sport Catch, by Area and Month

COAST RIVERS AND MARINE CATCH AREAS																			
System	Catch Area	Race	Marked/ Unmarked	2000								2001			Total				
				Apr	May	Jun	Jul	Aug	Sep	Oct	Nov	Dec	Jan	Feb		Mar			
GOODMAN CREEK*	Goodman Creek (Jefferson Co)	SSH	Marked											3				3	
			Unmarked												0				0
			Total												3				3
		WSH	Marked											14	43	46	15		118
		Unmarked											0	18	11	14		43	
		Total										14	61	57	29		161		
HOH RIVER*	Hoh River above Hwy 101	SSH	Marked					24	6									30	
			Unmarked					0	0									0	
			Total					24	6									30	
		WSH	Marked	5									10	36	36	21	5	113	
			Unmarked	5									0	5	10	5	26	51	
			Total	10									10	41	46	26	31	164	
		Hoh River below Hwy 101	SSH	Marked			12	66	95	36	36							245	
	Unmarked					0	0	6	0	0							6		
	Total					12	66	101	36	36							251		
	WSH		Marked	67									31	219	127	224	214	882	
			Unmarked	107									0	31	36	128	322	624	
			Total	174									31	250	163	352	536	1,506	
	Hoh River System Totals	SSH	Marked			12	66	119	42	36							275		
Unmarked					0	0	6	0	0							6			
Total					12	66	125	42	36							281			
WSH		Marked	72									41	255	163	245	219	995		
		Unmarked	112									0	36	46	133	348	675		
		Total	184									41	291	209	378	567	1,670		
HOQUIAM RIVER*	Hoquiam River	SSH	Marked										6				6		
			Unmarked											0				0	
			Total											6				6	
		WSH	Marked											4	4	4	4	16	
		Unmarked											0	0	0	0	0		
		Total											4	4	4	4	16		
HUMPTULIPS RIVER*	Humptulips River	SSH	Marked		4	29	90	20	33	33							209		
			Unmarked		0	0	0	0	0	0							0		
			Total		4	29	90	20	33	33							209		
		WSH	Marked										65	189	85	20	7	366	
		Unmarked										0	0	6	0	0	6		
		Total										65	189	91	20	7	372		

Table 33. 2000-2001 Steelhead Sport Catch, by Area and Month

COAST RIVERS AND MARINE CATCH AREAS																	
System	Catch Area	Race	Marked/ Unmarked	2000								2001			Total		
				Apr	May	Jun	Jul	Aug	Sep	Oct	Nov	Dec	Jan	Feb		Mar	
HUMPTULIPS RIVER* (continued)	Humptulips River East Fork	SSH	Marked			4		4	0	12						20	
			Unmarked			0		0	4	0						4	
			Total			4		4	4	12						24	
		WSH	Marked									20	20	7	0	7	54
			Unmarked									0	6	0	26	0	32
			Total									20	26	7	26	7	86
	Humptulips River West Fork	WSH	Marked	0									7				7
			Unmarked	7									0				7
			Total	7									7				14
	Stevens Creek	WSH	Marked									7	39	20	7		73
Unmarked											0	0	0	0		0	
Total											7	39	20	7		73	
Humptulips River System Totals	SSH	Marked		4	33	90	24	33	45							229	
		Unmarked		0	0	0	0	4	0							4	
		Total		4	33	90	24	37	45							233	
	WSH	Marked	0								92	255	112	27	14	500	
		Unmarked	7								0	6	6	26	0	45	
		Total	7								92	261	118	53	14	545	
JOHNS RIVER	Johns River	WSH	Marked									7	39	18	4	68	
			Unmarked									0	0	0	0	0	
			Total									7	39	18	4	68	
KALALOCH CREEK*	Kalaloch Creek	WSH	Marked									32		0		32	
			Unmarked									0	4	4		4	
			Total									32	4	4		36	
MOCLIPS RIVER*	Moclips River	SSH	Marked					3								3	
			Unmarked					0								0	
			Total					3								3	
MOSQUITO CREEK*	Mosquito Creek (Jefferson Co)	WSH	Marked										4	4		8	
			Unmarked										10	3		13	
			Total										14	7		21	
NASELLE RIVER*	Naselle River	WSH	Marked								4	57	14	29	7	111	
			Unmarked								0	4	4	0	0	8	
			Total								4	61	18	29	7	119	
	Salmon Creek (Pacific Co)	WSH	Marked								4	14		4		22	
			Unmarked								0	0		0		0	
			Total								4	14		4		22	
	Naselle River System Totals	WSH	Marked								8	71	14	33	7	133	
			Unmarked								0	4	4	0	0	8	
			Total								8	75	18	33	7	141	

Table 33. 2000-2001 Steelhead Sport Catch, by Area and Month

COAST RIVERS AND MARINE CATCH AREAS																	
System	Catch Area	Race	Marked/ Unmarked	2000								2001			Total		
				Apr	May	Jun	Jul	Aug	Sep	Oct	Nov	Dec	Jan	Feb		Mar	
NEMAH RIVER	Nemah River and Williams Creek	SSH	Marked				3		3	3						9	
			Unmarked				0		0	0						0	
			Total				3		3	3						9	
		WSH	Marked	4								4	18	4	4	4	38
			Unmarked	0								0	0	0	0	0	0
			Total	4								4	18	4	4	4	38
NORTH RIVER	North River	WSH	Marked									18	21	14		53	
			Unmarked									3	0	0		3	
			Total									21	21	14		56	
	Smith Creek	WSH	Marked	0										4		4	
			Unmarked	4										0		4	
			Total	4										4		8	
	North River System Totals	WSH	Marked	0								18	21	18		57	
			Unmarked	4								3	0	0		7	
			Total	4								21	21	18		64	
OZETTE RIVER*	Ozette River	WSH	Marked									4			4		
			Unmarked									0			0		
			Total									4				4	
PALIX RIVER	Palix River	WSH	Marked									7	7		14		
			Unmarked									4	0		4		
			Total									11	7		18		
QUEETS RIVER*	Clearwater River	SSH	Marked								7				7		
			Unmarked									0			0		
			Total									7			7		
		WSH	Marked	4									0	4	8	12	28
			Unmarked	23									4	15	58	73	173
			Total	27									4	19	66	85	201
	Queets River	SSH	Marked						13							13	
			Unmarked						0							0	
			Total						13							13	
		WSH	Marked	4							66	93	39	74	4	280	
			Unmarked	100							4	19	19	108	50	300	
			Total	104							70	112	58	182	54	580	
Salmon River (Jefferson Co)	SSH	Marked			39				7						46		
		Unmarked			0				0						0		
		Total			39				7						46		
	WSH	Marked	4								4	58	23	15	12	116	
		Unmarked	0								11	39	47	4	0	101	
		Total	4								15	97	70	19	12	217	

Table 33. 2000-2001 Steelhead Sport Catch, by Area and Month

COAST RIVERS AND MARINE CATCH AREAS																		
System	Catch Area	Race	Marked/ Unmarked	2000								2001			Total			
				Apr	May	Jun	Jul	Aug	Sep	Oct	Nov	Dec	Jan	Feb		Mar		
QUEETS RIVER* (continued)	Queets River System Totals	SSH	Marked			39				20	7					66		
			Unmarked			0				0	0					0		
			Total			39				20	7					66		
		WSH	Marked	12								70	151	66	97	28	424	
			Unmarked	123									15	62	81	170	123	574
			Total	135								85	213	147	267	151	998	
QUILLAYUTE RIVER*	Bogachiel River	SSH	Marked			33	50	38	61	22						204		
			Unmarked			0	5	0	5	11						21		
			Total			33	55	38	66	33						225		
		WSH	Marked	13								298	883	149	41	79	1,463	
			Unmarked	109								4	44	96	73	227	553	
			Total	122								302	927	245	114	306	2,016	
	Calawah River & SF	SSH	Marked			55	93	154	66	121						489		
			Unmarked			0	0	0	16	0						16		
			Total			55	93	154	82	121						505		
		WSH	Marked	5								96	101	52	9	0	263	
			Unmarked	4								0	13	9	22	13	61	
			Total	9								96	114	61	31	13	324	
	Dickey River	WSH	Marked	0								0		9	4	4	17	
			Unmarked	4								4		17	18	0	43	
			Total	4								4		26	22	4	60	
	Quillayute River	SSH	Marked						5	5						10		
			Unmarked						0	0						0		
			Total						5	5						10		
WSH		Marked	0									35	66	18	13	132		
		Unmarked	26									9	52	52	74	213		
		Total	26									44	118	70	87	345		
Solduc River	SSH	Marked		5	38	50	72	16	99						280			
		Unmarked		0	0	5	5	0	11						21			
		Total		5	38	55	77	16	110						301			
	WSH	Marked	9								22	78	166	83	87	445		
		Unmarked	183								9	44	214	197	293	940		
		Total	192								31	122	380	280	380	1,385		
Quillayute River System Totals	SSH	Marked		5	126	193	269	148	242						983			
		Unmarked		0	0	10	5	21	22						58			
		Total		5	126	203	274	169	264						1,041			
	WSH	Marked	27								416	1,097	442	155	183	2,320		
		Unmarked	326								17	110	388	362	607	1,810		
		Total	353								433	1,207	830	517	790	4,130		

Table 33. 2000-2001 Steelhead Sport Catch, by Area and Month

COAST RIVERS AND MARINE CATCH AREAS																			
System	Catch Area	Race	Marked/ Unmarked	2000								2001			Total				
				Apr	May	Jun	Jul	Aug	Sep	Oct	Nov	Dec	Jan	Feb		Mar			
QUINAULT RIVER*	Lake Quinault	SSH	Marked					2		2						4			
			Unmarked					0		0							0		
			Total					2		2							4		
		WSH	Marked	Unmarked												17	17		
				Unmarked												6	6		
				Total												23	23		
	Quinault River Lower (and Cook Creek) ³	SSH	Marked	Unmarked						5							5		
				Unmarked						0								0	
				Total						5								5	
		WSH	Marked	Unmarked	4									0		6	23	33	
				Unmarked	129										12		6	17	164
				Total	133										12		12	40	197
Quinault River Upper	WSH	Marked	Unmarked										0	0	6	6	12		
			Unmarked										6	12	23	58	99		
			Total										6	12	29	64	111		
Quinault River System Totals	SSH	Marked	Unmarked					2	5	2							9		
			Unmarked					0	0	0								0	
			Total					2	5	2								9	
	WSH	Marked	Unmarked	4									0	0	12	46	62		
			Unmarked	129										18	12	29	81	269	
			Total	133										18	12	41	127	331	
RAFT RIVER*	Raft River	WSH	Marked										4				4		
			Unmarked											0				0	
			Total											4				4	
SUEZ RIVER*	Suez (Sooes) River (Clallam Co)	WSH	Marked											0			0		
			Unmarked											7				7	
			Total											7				7	
WAATCH RIVER*	Waatch River	SSH	Marked					3									3		
			Unmarked					0										0	
			Total					3										3	
WILLAPA RIVER	Willapa River	SSH	Marked			12				35							47		
			Unmarked			0				0								0	
			Total			12				35								47	
	WSH	Marked	Unmarked										8	94	35	27	16	180	
			Unmarked										4	8	4	0	0	16	
			Total										12	102	39	27	16	196	

Table 33. 2000-2001 Steelhead Sport Catch, by Area and Month

COAST RIVERS AND MARINE CATCH AREAS																
System	Catch Area	Race	Marked/ Unmarked	2000								2001			Total	
				Apr	May	Jun	Jul	Aug	Sep	Oct	Nov	Dec	Jan	Feb		Mar
MARINE CATCH AREAS	Area 1: Col R - Leadbetter Point	SSH	Marked					63		16						79
			Unmarked					0		0						0
			Total					63		16						79
	WSH	Marked									9	9		9		27
		Unmarked									0	0		0		0
		Total									9	9		9		27
MARINE CATCH AREAS*	Area 2: Westport	SSH	Marked		8										8	
			Unmarked		0										0	
			Total		8											8
	Area 3: Quillayute River	SSH	Marked							8					8	
			Unmarked							0					0	
			Total							8						8
	WSH	Marked										0			0	
		Unmarked										9			9	
		Total										9			9	
	Area 4: Cape Flatterly	SSH	Marked				8								8	
			Unmarked				0								0	
			Total				8									8
Marine Catch Areas 2, 3 & 4 Total	SSH	Marked		8		8			8					24		
		Unmarked		0		0			0					0		
		Total		8		8			8					24		
	WSH	Marked										0		0		
		Unmarked										9		9		
		Total										9		9		
COAST RIVER/STREAMS WITH MARINE CATCH AREAS TOTALS	SSH	Marked		22	546	739	762	362	467					2,898		
		Unmarked		0	5	10	16	25	22					78		
		Total		22	551	749	778	387	489					2,976		
	WSH	Marked	244								762	2,404	1,887	1,846	1,591	8,734
		Unmarked	701								36	293	598	773	1,208	3,609
		Total	945								798	2,697	2,485	2,619	2,799	12,343

Table 33. 2000-2001 Steelhead Sport Catch, by Area and Month

PUGET SOUND AND STRAIT OF JUAN DE FUCA RIVER SYSTEMS WITH MARINE CATCH AREAS																		
System	Catch Area	Race	Marked/ Unmarked Total	2000								2001			Total			
				Apr	May	Jun	Jul	Aug	Sep	Oct	Nov	Dec	Jan	Feb		Mar		
BURLEY CREEK*	Burley Creek	WSH	Marked												0			0
			Unmarked												4			4
			Total												4			4
CHAMBERS CREEK*	Chambers Creek	SSH	Marked					5										5
			Unmarked					0										0
			Total					5										5
CLALLAM RIVER*	Clallam River	WSH	Marked										7	18			25	
			Unmarked										0	0			0	
			Total										7	18			25	
COULTER CREEK*	Coulter Creek	WSH	Marked										4	0			4	
			Unmarked										0	4			4	
			Total										4	4			8	
DESCHUTES RIVER*	Deschutes River and Percival Creek	SSH	Marked					5									5	
			Unmarked					0									0	
			Total					5									5	
DEWATTO RIVER*	Dewatto River	SSH	Marked									5				5		
			Unmarked									0				0		
			Total									5				5		
DUCKABUSH RIVER*	Duckabush River	SSH	Marked					5									5	
			Unmarked					0									0	
			Total					5									5	
DUNGENESS RIVER*	Dungeness River	SSH	Marked									25				25		
			Unmarked									5				5		
			Total									30				30		
		WSH	Marked									7	26	7	4		44	
			Unmarked									0	0	0	0		0	
			Total									7	26	7	4		44	
EAST TWIN RIVER*	East Twin River	WSH	Marked									40	33			73		
			Unmarked									0	0			0		
			Total									40	33			73		
ELWHA RIVER*	Elwha River	SSH	Marked			27	7	7			46				87			
			Unmarked			0	0	0			7				7			
			Total			27	7	7			53				94			
		WSH	Marked									177	376	155	94		802	
			Unmarked									0	4	4	0		8	
			Total									177	380	159	94		810	

Table 33. 2000-2001 Steelhead Sport Catch, by Area and Month

PUGET SOUND AND STRAIT OF JUAN DE FUCA RIVER SYSTEMS WITH MARINE CATCH AREAS																	
System	Catch Area	Race	Marked/ Unmarked	2000								2001			Total		
				Apr	May	Jun	Jul	Aug	Sep	Oct	Nov	Dec	Jan	Feb		Mar	
GREEN-DUWAMISH RIVER*	Green-Duwamish River and Soos Cr.	SSH	Marked			18	105	43	55	19						240	
			Unmarked			0	6	0	0	6							12
			Total			18	111	43	55	25							252
		WSH	Marked									23	211	108	39	9	390
			Unmarked									12	52	54	0	4	122
			Total									35	263	162	39	13	512
HAMMA HAMMA RIVER*	Hamma Hamma River	WSH	Marked										0		0		
			Unmarked											4		4	
			Total												4		4
HOKO RIVER*	Hoko River	WSH	Marked								4	106	77	39	11	237	
			Unmarked								0	21	39	35	14	109	
			Total								4	127	116	74	25	346	
KENNEDY CREEK*	Kennedy Creek	SSH	Marked				5									5	
			Unmarked				0										0
			Total				5										5
		WSH	Marked												4		4
			Unmarked												0		0
			Total												4		4
LAKE WASHINGTON*	Cedar River, Issaquah Creek, Lake Washington, Ship Canal and Samammish River	SSH	Marked					5		5						10	
			Unmarked					0		0							0
			Total					5		5							10
		WSH	Marked									8		4	0	0	12
			Unmarked									0		11	18	22	51
			Total									8		15	18	22	63
LITTLE QUILCENE RIVER*	Little Quilcene River	WSH	Marked										11			11	
			Unmarked											0		0	
			Total												11		11
LYRE RIVER*	Lyre River	SSH	Marked			4	17	4	45	29						99	
			Unmarked			0	4	0	0	0							4
			Total			4	21	4	45	29							103
		WSH	Marked									69	281	74	5		429
			Unmarked									0	0	0	0		0
			Total									69	281	74	5		429
MORSE CREEK*	Morse Creek	WSH	Marked									15		26	4	4	49
			Unmarked										0		0	0	0
			Total										15		26	4	4

Table 33. 2000-2001 Steelhead Sport Catch, by Area and Month

PUGET SOUND AND STRAIT OF JUAN DE FUCA RIVER SYSTEMS WITH MARINE CATCH AREAS																		
System	Catch Area	Race	Marked/ Unmarked	2000									2001			Total		
				Apr	May	Jun	Jul	Aug	Sep	Oct	Nov	Dec	Jan	Feb	Mar			
NISQUALLY RIVER*	Nisqually River	SSH	Marked					5									5	
			Unmarked					0										0
			Total					5										5
		WSH	Marked															7
Unmarked																0		
Total																7		
NOOKSACK RIVER*	Nooksack River MF	WSH	Marked										13	19			32	
			Unmarked															0
			Total															13
	Nooksack River NF	WSH	Marked															32
			Unmarked															6
			Total															38
	Nooksack River SF	WSH	Marked															6
			Unmarked															0
			Total															6
	Nooksack River, mainstem only	SSH	Marked															9
			Unmarked															0
			Total															9
		WSH	Marked															51
			Unmarked															0
Total																	51	
Nooksack River System Totals	SSH	Marked															9	
		Unmarked															0	
		Total															9	
WSH	Marked															19		
	Unmarked															0		
	Total															19		
PURDY CREEK*	Purdy Creek (Snohomish Co.)	WSH	Marked													11		
			Unmarked													0		
			Total													11		
PUYALLUP RIVER*	Carbon River and South Prairie Creek	SSH	Marked														5	
			Unmarked															0
			Total															5
		WSH	Marked															4
			Unmarked															0
			Total													4		

Table 33. 2000-2001 Steelhead Sport Catch, by Area and Month

PUGET SOUND AND STRAIT OF JUAN DE FUCA RIVER SYSTEMS WITH MARINE CATCH AREAS																		
System	Catch Area	Race	Marked/ Unmarked	2000									2001			Total		
				Apr	May	Jun	Jul	Aug	Sep	Oct	Nov	Dec	Jan	Feb	Mar			
PUYALLUP RIVER* (continued)	Puyallup River	SSH	Marked		5			10	5								20	
			Unmarked		0			0	0									0
			Total		5			10	5									
		WSH	Marked									4	51		15	18		88
			Unmarked									0	4		0	0		4
			Total									4	55		15	18		92
	Stuck (White) River	WSH	Marked											0				0
			Unmarked												7			7
			Total												7			7
	Puyallup River System Totals	SSH	Marked		5			10	10	5								30
Unmarked				0			0	0	5								5	
Total				5			10	10	10									35
WSH		Marked									4	55		26	22		107	
		Unmarked									0	11		0	0		11	
		Total								4	66		26	22		118		
PYSHT RIVER*	Pysht River	SSH	Marked					10									10	
			Unmarked					0									0	
			Total					10									10	
	WSH	Marked									4	25		22	29		80	
		Unmarked									3	15		33	70		121	
		Total								7	40		55	99		201		
QUILCENE RIVER*	Quilcene River	SSH	Marked					5		15							20	
			Unmarked					0		0							0	
			Total					5		15							20	
	WSH	Marked									7	25					32	
		Unmarked									0	4					4	
		Total								7	29					36		
SALT CREEK*	Salt Creek	WSH	Marked										4				4	
			Unmarked											0			0	
			Total											4			4	
SAMISH RIVER*	Samish River	SSH	Marked					15		0							15	
			Unmarked					0		5							5	
			Total					15		5							20	
	WSH	Marked									7	18		7		4	36	
		Unmarked									4	0		4		0	8	
		Total								11	18		11		4	44		

Table 33. 2000-2001 Steelhead Sport Catch, by Area and Month

PUGET SOUND AND STRAIT OF JUAN DE FUCA RIVER SYSTEMS WITH MARINE CATCH AREAS																	
System	Catch Area	Race	Marked/ Unmarked	2000									2001			Total	
				Apr	May	Jun	Jul	Aug	Sep	Oct	Nov	Dec	Jan	Feb	Mar		
SEKIU RIVER*	Sekiu River	SSH	Marked						5							5	
			Unmarked						0							0	
			Total						5							5	
		WSH	Marked										4	11		15	
		Unmarked										3	0		3		
		Total									7	11		18			
SHERWOOD CREEK*	Sherwood Creek (Mason Co.)	SSH	Marked						10	10						20	
			Unmarked						0	0						0	
			Total						10	10						20	
		WSH	Marked												0	0	
		Unmarked												4	4		
		Total												4	4		
SKAGIT RIVER*	Cascade River	SSH	Marked			7					7					14	
			Unmarked			0					0					0	
			Total			7					7					14	
		WSH	Marked									5	75	48	5		133
			Unmarked									0	0	0	0		0
			Total									5	75	48	5		133
	Sauk River	SSH	Marked					20		7						27	
			Unmarked					0		0						0	
			Total					20		7						27	
		WSH	Marked										11	27	32	5	75
	Unmarked											0	0	0	0	0	
	Total											11	27	32	5	75	
	Skagit River	SSH	Marked			33	47	27	0	7						114	
			Unmarked			7	0	0	7	0						14	
Total					40	47	27	7	7						128		
WSH		Marked									54	605	525	161	16	1,361	
		Unmarked									5	11	5	32	0	53	
		Total									59	616	530	193	16	1,414	
Skagit River System Totals	SSH	Marked			40	47	47	0	21						155		
		Unmarked			7	0	0	7	0						14		
		Total			47	47	47	7	21						169		
	WSH	Marked									59	691	600	198	21	1,569	
Unmarked										5	11	5	32	0	53		
Total										64	702	605	230	21	1,622		

Table 33. 2000-2001 Steelhead Sport Catch, by Area and Month

PUGET SOUND AND STRAIT OF JUAN DE FUCA RIVER SYSTEMS WITH MARINE CATCH AREAS																	
System	Catch Area	Race	Marked/ Unmarked	2000									2001			Total	
				Apr	May	Jun	Jul	Aug	Sep	Oct	Nov	Dec	Jan	Feb	Mar		
SKOKOMISH RIVER*	Skokomish River	SSH	Marked			5										5	
			Unmarked			0											0
			Total			5											5
		WSH	Marked														7
Unmarked															0	0	
Total															7	22	
SKOOKUM CREEK*	Skookum Creek (Mason Co.)	SSH	Marked					15								15	
			Unmarked					0									0
			Total					15									15
		WSH	Marked	4													4
Unmarked	0														0	0	
Total	4														4	8	
SNOHOMISH RIVER*	Pilchuck River	SSH	Marked				4									4	
			Unmarked				0										0
			Total				4										4
		WSH	Marked											46	61	5	112
			Unmarked											0	10	20	30
			Total											46	71	25	142
	Raging River	SSH	Marked						4	20							24
			Unmarked						0	0							0
			Total						4	20							24
		WSH	Marked									5	5	10			20
			Unmarked									0	0	0			0
			Total									5	5	10			20
Skykomish River	SSH	Marked		8	773	921	454	414	426							2,996	
		Unmarked		0	16	0	0	0	0								16
		Total		8	789	921	454	414	426								3,012
	WSH	Marked	5								223	865	430	243	10	1,776	
		Unmarked	5								0	5	10	25	0	45	
		Total	10								223	870	440	268	10	1,821	
Skykomish River NF	SSH	Marked				80	108	64	28							280	
		Unmarked				0	0	0	0							0	
		Total				80	108	64	28							280	
	WSH	Marked									10	40	20	10		80	
Unmarked										0	0	0	0		0		
Total										10	40	20	10		80		

Table 33. 2000-2001 Steelhead Sport Catch, by Area and Month

PUGET SOUND AND STRAIT OF JUAN DE FUCA RIVER SYSTEMS WITH MARINE CATCH AREAS																		
System	Catch Area	Race	Marked/ Unmarked	2000								2001			Total			
				Apr	May	Jun	Jul	Aug	Sep	Oct	Nov	Dec	Jan	Feb		Mar		
SNOHOMISH RIVER* (continued)	Skykomish River SF	SSH	Marked			8	88	40	36	8						180		
			Unmarked			0	0	8	0	4						12		
			Total			8	88	48	36	12						192		
		WSH		Marked								10	10		10	5	35	
				Unmarked									0	0		0	0	0
				Total									10	10		10	5	35
	Snohomish River	SSH		Marked			259	227	24	16	8						534	
				Unmarked			0	0	0	0	0							0
				Total			259	227	24	16	8							534
		WSH		Marked								187	314		86	25	612	
				Unmarked									0	10		0	5	15
				Total									187	324		86	30	627
Snoqualmie River	SSH		Marked			40	72	36	92	92						332		
			Unmarked			0	0	0	0	0							0	
			Total			40	72	36	92	92							332	
	WSH		Marked	5							96	779		278	91	5	1,254	
			Unmarked	10								0	10		5	5	0	30
			Total	15								96	789		283	96	5	1,284
Sultan River	SSH		Marked							4						4		
			Unmarked							0							0	
			Total							4							4	
	WSH		Marked								5	10		30		45		
			Unmarked									0	0		0		0	
			Total									5	10		30		45	
Tokul River	WSH		Marked									40		76	10	126		
			Unmarked										0		0	0	0	
			Total										40		76	10	126	
Tolt River	WSH		Marked								5	25		25	5	60		
			Unmarked									0	0		0	0	0	
			Total									5	25		25	5	60	
Wallace River	SSH		Marked			4	4	12								20		
			Unmarked			0	0	0									0	
			Total			4	4	12									20	
	WSH		Marked								41	122		66	10	239		
			Unmarked									5	5		0	0	10	
			Total									46	127		66	10	249	

Table 33. 2000-2001 Steelhead Sport Catch, by Area and Month

PUGET SOUND AND STRAIT OF JUAN DE FUCA RIVER SYSTEMS WITH MARINE CATCH AREAS																
System	Catch Area	Race	Marked/ Unmarked	2000								2001			Total	
				Apr	May	Jun	Jul	Aug	Sep	Oct	Nov	Dec	Jan	Feb		Mar
SNOHOMISH RIVER* (continued)	Snohomish River System Totals	SSH	Marked	8	1,084	1,396	674	630	582						4,374	
			Unmarked	0	16	0	8	0	4						28	
			Total	8	1,100	1,396	682	630	586							4,402
		WSH	Marked	10							582	2,256	1,092	404	15	4,359
			Unmarked	15							5	30	25	55	0	130
			Total	25							587	2,286	1,117	459	15	4,489
SQUALICUM CREEK*	Squalicum Creek	WSH	Marked							4		4		8		
			Unmarked							0		0		0		
			Total							4		4		8		
STILLAGUAMISH RIVER*	Canyon Creek (Snohomish Co.)	SSH	Marked			5					5			10		
			Unmarked			0					0			0		
			Total			5					5			10		
		WSH	Marked								9	5	9	5	28	
			Unmarked								0	0	0	0	0	
			Total								9	5	9	5	28	
	Pilchuck Creek	WSH	Marked								0			9	9	
			Unmarked								5			0	5	
			Total								5			9	14	
	Stillaguamish River	SSH	Marked							0					0	
			Unmarked							5					5	
			Total							5					5	
		WSH	Marked									14	5		19	
			Unmarked									0	0		0	
			Total									14	5		19	
	Stillaguamish River North Fork	SSH	Marked		16	105	73	37	105						336	
			Unmarked		0	0	0	0	0						0	
			Total		16	105	73	37	105						336	
WSH		Marked	5							45	520	285	140	995		
		Unmarked	0							0	5	0	0	5		
		Total	5							45	525	285	140	1,000		
Stillaguamish River South Fork	SSH	Marked		5	37	21	37	10						110		
		Unmarked		0	5	0	0	0						5		
		Total		5	42	21	37	10						115		
	WSH	Marked								5	5	5	9	24		
		Unmarked								0	0	0	0	0		
		Total								5	5	5	9	24		

Table 33. 2000-2001 Steelhead Sport Catch, by Area and Month

PUGET SOUND AND STRAIT OF JUAN DE FUCA RIVER SYSTEMS WITH MARINE CATCH AREAS																	
System	Catch Area	Race	Marked/ Unmarked	2000								2001			Total		
				Apr	May	Jun	Jul	Aug	Sep	Oct	Nov	Dec	Jan	Feb		Mar	
STILLAGUAMISH RIVER* (continued)	Stillaguamish River System Totals	SSH	Marked			26	142	94	74	120						456	
			Unmarked			0	5	0	5	0						10	
			Total			26	147	94	79	120						466	
		WSH	Marked	5								59	544	304	163	1,075	
			Unmarked	0								5	5	0	0	10	
			Total	5								64	549	304	163	1,085	
UNION RIVER*	Union River	SSH	Marked			5									5		
			Unmarked			0										0	
			Total			5										5	
		WSH	Marked									4	4			8	
			Unmarked									0	0			0	
			Total									4	4			8	
WEST TWIN RIVER*	West Twin River	SSH	Marked					5							5		
			Unmarked					0								0	
			Total					5								5	
		WSH	Marked										7	4		11	
			Unmarked										0	0		0	
			Total										7	4		11	
WHATCOM CREEK*	Whatcom Creek	SSH	Marked				44	10							54		
			Unmarked				0	0								0	
			Total				44	10								54	
		MARINE CATCH AREAS*	Area 5: West Juan de Fuca	WSH	Marked										12	6	6
Unmarked														0	0	0	0
Total														12	6	6	24
Area 6: East Juan de Fuca	SSH		Marked				7		0	0						7	
			Unmarked				0		7	7						14	
			Total				7		7	7						21	
	WSH		Marked									19				19	
			Unmarked									0				0	
			Total									19				19	
Area 7: San Juan Islands	SSH		Marked				41									41	
			Unmarked				0									0	
			Total				41									41	
	WSH	Marked									37		6		43		
		Unmarked									0		0		0		
		Total									37		6		43		

Table 33. 2000-2001 Steelhead Sport Catch, by Area and Month

PUGET SOUND AND STRAIT OF JUAN DE FUCA RIVER SYSTEMS WITH MARINE CATCH AREAS																	
System	Catch Area	Race	Marked/ Unmarked	2000								2001			Total		
				Apr	May	Jun	Jul	Aug	Sep	Oct	Nov	Dec	Jan	Feb		Mar	
MARINE CATCH AREAS* (continued)	Area 8: Skagit Bay- Port Susan	SSH	Marked				7									7	
			Unmarked				0										0
			Total				7										7
	Area 9: Admiralty Inlet	SSH	Marked					7			7						14
			Unmarked					0			0						0
			Total					7			7						14
		WSH	Marked									25	31	6	6	6	74
			Unmarked									0	0	0	0	0	0
			Total									25	31	6	6	6	74
	Area 10: North Puget Sound	SSH	Marked				0			7							7
			Unmarked				7			7							14
			Total				7			14							21
Area 11: Mid- Puget Sound	WSH	Marked											6			6	
		Unmarked											0			0	
		Total											6			6	
Marine Catch Areas System Totals	SSH	Marked				55	7	7	7							76	
		Unmarked				7	0	14	7							28	
		Total				62	7	21	14							104	
	WSH	Marked								0	81	31	30	12	12	166	
PUGET SOUND AND STRAIT OF JUAN DE FUCA RIVER SYSTEMS WITH MARINE CATCH AREAS TOTALS	SSH	Marked		13	1,209	1,818	971	836	898							5,745	
		Unmarked		0	23	22	8	26	39							118	
		Total		13	1,232	1,840	979	862	937							5,863	
	WSH	Marked	19							1,110	4,873	2,679	1,104	118	9,903		
PUGET SOUND AND STRAIT OF JUAN DE FUCA RIVER SYSTEMS WITH MARINE CATCH AREAS TOTALS	WSH	Unmarked	15							34	162	222	246	63	742		
		Total	34							1,144	5,035	2,901	1,350	181	10,645		

Table 33. 2000-2001 Steelhead Sport Catch, by Area and Month

STATEWIDE STEELHEAD HARVEST SUMMARY, 2000-2001															
System	Race	Marked/ Unmarked	2000									2001			Total
			Apr	May	Jun	Jul	Aug	Sep	Oct	Nov	Dec	Jan	Feb	Mar	
NON-BOLDT CASE AREAS	SSH	Marked	175	1,798	6,642	9,745	12,652	6,394	9,253	5,240	2,756	2,232	2,476	3,013	62,376
		Unmarked	0	22	79	207	243	95	269	192	45	45	59	53	1,309
		Total	175	1,820	6,721	9,952	12,895	6,489	9,522	5,432	2,801	2,277	2,535	3,066	63,685
	WSH	Marked	578							1,297	4,284	1,764	785	1,080	9,788
		Unmarked	14							27	162	31	18	23	275
		Total	592							1,324	4,446	1,795	803	1,103	10,063
BOLDT CASE AREAS*	SSH	Marked	0	35	1,743	2,554	1,670	1,160	1,346						8,508
		Unmarked	0	0	28	32	24	51	61						196
		Total	0	35	1,771	2,586	1,694	1,211	1,407						8,704
	WSH	Marked	259							1,836	7,021	4,458	2,864	1,682	18,120
		Unmarked	712							66	436	812	1,015	1,271	4,312
		Total	971							1,902	7,457	5,270	3,879	2,953	22,432
TOTAL CATCH	SSH	Marked	175	1,833	8,385	12,299	14,322	7,554	10,599	5,240	2,756	2,232	2,476	3,013	70,884
		Unmarked	0	22	107	239	267	146	330	192	45	45	59	53	1,505
		Total	175	1,855	8,492	12,538	14,589	7,700	10,929	5,432	2,801	2,277	2,535	3,066	72,389
	WSH	Marked	837							3,133	11,305	6,222	3,649	2,762	27,908
		Unmarked	726							93	598	843	1,033	1,294	4,587
		Total	1,563							3,226	11,903	7,065	4,682	4,056	32,495

* Boldt case area river/stream system (Western Washington only).

¹ The majority of the Columbia River System steelhead are summer-runs.

² Fish caught in this section of the Cowlitz River System are considered resident trout.

³ Winter steelhead catches are from angler surveys conducted by the Quinault Indian Nation.

Table 34. 2000-2001 Washington Sport Steelhead Fishing, by Residence

County of Residence	# Catch Record Cards	Population by County	% Catch Record Card Holders	Total Steelhead	Average Catch per Catch Record Card
Adams	1,369	16,428	8.33	305	0.22
Asotin	3,209	20,551	15.61	3,148	0.98
Benton	20,656	142,475	14.50	6,488	0.31
Chelan	3,650	66,616	5.48	23	0.01
Clallam	15,625	64,525	24.22	5,450	0.35
Clark	50,578	345,238	14.65	9,445	0.19
Columbia	928	4,064	22.83	654	0.70
Cowlitz	23,766	92,948	25.57	8,158	0.34
Douglas	1,909	32,603	5.86	68	0.04
Ferry	93	7,260	1.28		0.00
Franklin	6,156	49,347	12.47	2,573	0.42
Garfield	58	2,397	2.42		0.00
Grant	2,930	74,698	3.92	598	0.20
Grays Harbor	10,752	67,194	16.00	2,798	0.26
Island	12,214	71,558	17.07	102	0.01
Jefferson	6,185	25,953	23.83	305	0.05
King	116,387	1,737,034	6.70	11,735	0.10
Kitsap	23,342	231,969	10.06	959	0.04
Kittitas	2,054	33,362	6.16	327	0.16
Klickitat	3,232	19,161	16.87	654	0.20
Lewis	12,858	68,600	18.74	4,107	0.32
Lincoln	429	10,184	4.21	113	0.26
Mason	5,843	49,405	11.83	316	0.05
Okanogan	1,131	39,564	2.86	56	0.05
Pacific	5,239	20,984	24.97	779	0.15
Pend Oreille	244	11,732	2.08		0.00
Pierce	53,972	700,820	7.70	6,906	0.13
San Juan	2,298	14,077	16.32	23	0.01
Skagit	21,184	102,979	20.57	2,031	0.10
Skamania	1,694	9,872	17.16	192	0.11
Snohomish	76,009	606,024	12.54	7,910	0.10
Spokane	10,955	417,939	2.62	5,721	0.52
Stevens	928	40,066	2.32	181	0.20
Thurston	24,056	207,355	11.60	3,566	0.15
Wahkiakum	563	3,824	14.72	948	1.68
Walla Walla	7,450	55,180	13.50	4,739	0.64
Whatcom	22,292	166,814	13.36	1,117	0.05
Whitman	2,309	40,740	5.67	1,659	0.72
Yakima	19,890	222,581	8.94	8,959	0.45
Unknown WA	8,535			1,681	0.20
Washington Total	582,972	5,894,121	9.89	104,794	0.18
Other State Total	383	n/a	n/a	56	0.15
Foreign	371	n/a	n/a	34	0.09
Grand Total	583,726	5,894,121	9.90	104,884	0.18

Note: The figures do not accurately multiply across because of bias adjustment factor and rounding of numbers.
Source: Intercensal estimates of the Total Resident Population by County

Table 35. 2000-2001 Frequency Distribution of Estimated Steelhead Catch Record Cards and Catch

# Steelhead per Catch Record Card	# of Cards	Cumulative # of Cards	Percent Cards	Cumulative Percent Cards	Total Catch	Cumulative Total Catch	Percent Catch	Cumulative Percent Catch
0	554,138	554,138	94.93	94.93	0	0	0.00	0.00
1	11,214	565,352	1.92	96.85	11378	11,378	10.85	10.85
2	6,302	571,654	1.08	97.93	12787	24,165	12.19	23.04
3	3,466	575,120	0.59	98.53	10549	34,714	10.06	33.10
4	2,191	577,311	0.38	98.90	8893	43,607	8.48	41.58
5	1,446	578,757	0.25	99.15	7338	50,945	7.00	48.57
6	960	579,717	0.16	99.31	5841	56,786	5.57	54.14
7	773	580,490	0.13	99.45	5493	62,279	5.24	59.38
8	730	581,220	0.13	99.57	5929	68,208	5.65	65.03
9	372	581,592	0.06	99.63	3400	71,608	3.24	68.27
10	415	582,007	0.07	99.71	4214	75,822	4.02	72.29
11	286	582,293	0.05	99.75	3197	79,019	3.05	75.34
12	100	582,393	0.02	99.77	1221	80,240	1.16	76.50
13	201	582,594	0.03	99.81	2645	82,885	2.52	79.03
14	258	582,852	0.04	99.85	3662	86,547	3.49	82.52
15	86	582,938	0.01	99.87	1308	87,855	1.25	83.76
16	129	583,067	0.02	99.89	2092	89,947	1.99	85.76
17	86	583,153	0.01	99.90	1482	91,429	1.41	87.17
18	86	583,239	0.01	99.92	1569	92,998	1.50	88.67
19	14	583,253	0.00	99.92	276	93,274	0.26	88.93
20	43	583,296	0.01	99.93	872	94,146	0.83	89.76
21	43	583,339	0.01	99.93	915	95,061	0.87	90.64
22	86	583,425	0.01	99.95	1918	96,979	1.83	92.46
23	29	583,454	0.00	99.95	668	97,647	0.64	93.10
24	72	583,526	0.01	99.97	1744	99,391	1.66	94.76
25	72	583,598	0.01	99.98	1816	101,207	1.73	96.50
26	14	583,612	0.00	99.98	378	101,585	0.36	96.86
27	57	583,669	0.01	99.99	1569	103,154	1.50	98.35
29	14	583,683	0.00	99.99	421	103,575	0.40	98.75
30	43	583,726	0.01	100.00	1308	104,883	1.25	100.00
Total	583,726		100.00		104,883		100.00	

Note: The figures do not accurately multiply across because of bias adjustment factor and rounding of numbers.

Table 36A. 2000-2001 Sport Steelhead Technical Catch Data

Records on File	Estimates and Calculations
Name and Address File	145,893
Catch Record Cards in Sample Returns	63,987
Correction Data	
Correction Factor	5,474 / 5,883 = 0.9305
Percentage of voluntarily returned catch records with matching names and addresses	
Name/Address Corrected for Dealer Non-Response	145,893 / .9305 = 156,798
Estimated Number of Catch Records Issued (Num Books / Corrfctr * x Avg # CRC/Book * 4)	6844 / .9305 * 19.83 * 4 = 583,727
Catch Expansion Factor	583,727 / 63,987 = 9.14

Table 36B. 2000-2001 Sport Steelhead Inventory of Catch Record Cards Received

Response	Number of Cards with Catch		Number of Cards without Catch		Total Cards & Letters	Number of Steelhead			Catch Per Card		
	Catch Records	Reminder Letters	Catch Records	Reminder Letters		Catch Records	Reminder Letters	Total Steelhead	Catch Records	Reminder Letters	Cards & Letters
0	95		2,069		2,164	269		269	0.12		0.12
1	1,439	378	14,247	16,008	32,072	5,209	1,106	6,315	0.33	0.07	0.20
2	308	294	3,189	13,689	17,480	1,019	914	1,933	0.29	0.07	0.11
3	101	126	1,136	6,861	8,224	295	493	788	0.24	0.07	0.10
4	457		3,079	6	3,542	1,778		1,778	0.50		0.50
8	440		65		505	306		306	0.61		0.61
Total	2,840	798	23,785	36,564	63,987	8,876	2,513	11,389	0.33	0.07	0.18

***Response Codes**

- 0 - Prior to Reminder
- 1 - After 1st Reminder
- 2 - After 2nd Reminder
- 3 - After 3rd Reminder
- 4 - From Sporting Goods Dealer
- 8 - Unknown return date

MARINE FISH

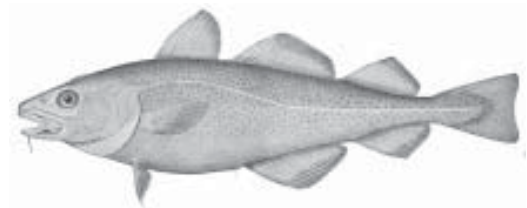
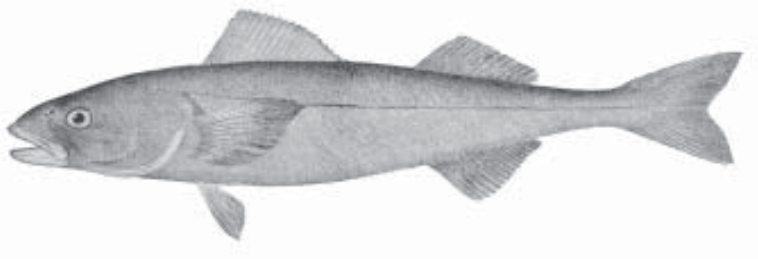
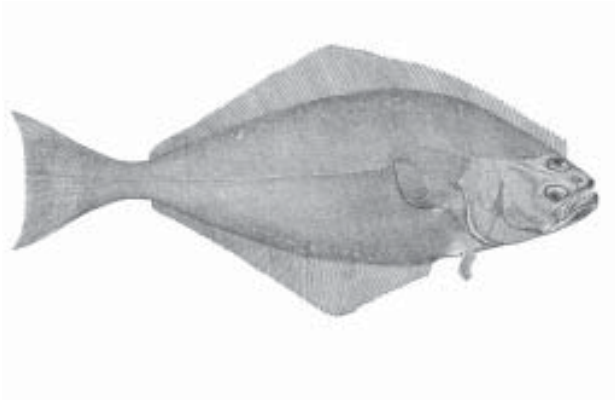


Table 37. 2000 Coastal Bottomfish Catch

Species	Catch Record Area:					Total
	1 Ilwaco	1 Ilwaco Jetty	2 Westport	3 La Push	4 Neah Bay	
Black Rockfish	5,726	47	125,567	7,658	53,363	192,361
Blue Rockfish	273		314	171	3,009	3,767
Boccacci	34		2	13	248	297
Cabezon	79		146	86	1,755	2,066
Canary Rockfish	325		2,073	337	3,161	5,896
China Rockfish	46		68	186	2,705	3,005
Copper Rockfish	32		54	35	1,960	2,081
Flatfish	44		8	6	180	238
Rockfish (general)	48		40	18	1,205	1,311
Cod (general)	19		9		302	330
Halibut						0
Kelp Greenling	126		213	120	3,655	4,114
Lingcod	335	16	4,458	746	6,037	11,592
Miscellaneous	230	24	327	10	336	927
Pacific Cod	7		34		35	76
Quillback Rockfish	181		821	200	2,235	3,437
Shark/Skate	126		9		5	140
Surfperch		544	195		16	755
Tiger Rockfish	24		25	35	162	246
Tuna	149		7,253	20		7,422
Vermillion Rockfish	14			4	323	341
Yellowtail Rockfish	281		9,913	602	3,408	14,204
Yelloweye Rockfish	289		1,146	747	3,582	5,764
TOTAL	8,388	631	152,675	10,994	87,682	260,370

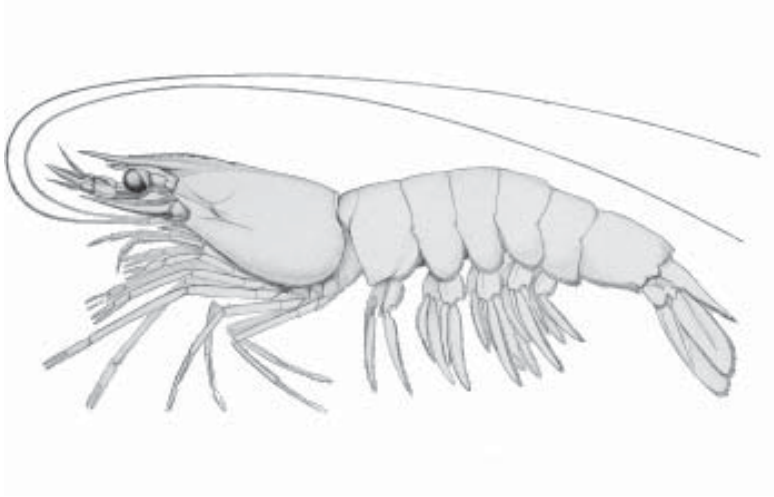
Table 38. 2000 Washington Recreational Pacific Halibut Catch

Year	South Coast Catch Areas 1-2	North Coast Catch Areas 3-4
1989	368	11,373
1990	392	4,958
1991	433	4,823
1992	1,740	6,870
1993	539	5,009
1994	651	2,876
1995	884	4,224
1996	877	4,431
1997	1,455	5,996
1998	2,940	6,127
1999	2,126	4,773
2000	2,341	4,861

Table 39. 2000 Sport Bottomfish Catch by Boat-Based Anglers in Puget Sound

Species	Catch Record Area									Puget Sound Total
	5	6	7	8	9	10	11	12	13	
Pacific halibut										1,510
Flatfishes except halibut	22	697	400	33	1,337	5,758	1,893	4,522	7,183	21,845
Sablefish	0	0	0	0	0	0	0	0	0	0
Lingcod	12	0	4	0	64	7	2	1,005	153	1,247
Rockfishes	332	1,294	2,215	1,416	324	1,084	452	4,921	289	12,327
Pacific cod	0	0	0	0	0	0	25	0	0	25
Walleye pollock	0	0	0	0	0	0	0	0	0	0
Surfperches	0	0	3	0	0	0	0	0	36	39
Sculpins	18	20	256	0	12	79	223	28	63	699
Spiny dogfish	4	417	7	0	0	90	0	9	75	602
Misc. bottomfishes	382	2,912	3,012	0	8	4	16	0	226	6,560
Total	770	5,340	5,897	1,449	1,745	7,022	2,611	10,485	8,025	44,854

Note: The catch of Pacific halibut is estimated by a catch record for halibut, and harvest is not available for individual Catch Areas. The Puget Sound catch of halibut includes fish caught between Sekiu and Cape Flattery (Catch Record Area 4B). Since 1994, substantial closures in the recreational salmon fishery have precluded complete boat-based recreational bottomfish estimates in most Puget Sound Catch Record Areas. The estimates appearing in this table, therefore, are incomplete.



SHELLFISH

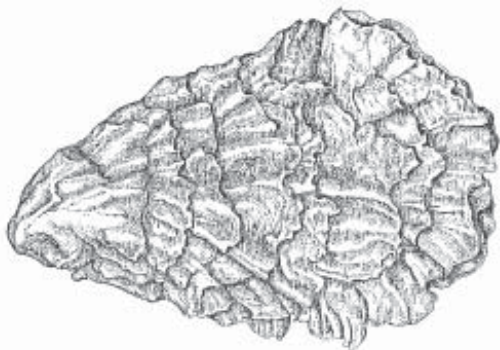


Table 40. 2000-2001 Seasonal Summary of Sport Razor Clam Digging on the Ocean Beaches (1)

Location	Fall 2000				Spring 2001			
	Digger Trips	Clams Per Trip	Percent Wastage (2)	Number of Clams (4)	Digger Trips	Clams Per Trip	Percent Wastage (2)	Number of Clams (4)
Long Beach	38,261	13.2	NA	511,023	25,840	11.8	10.0%	337,206
Twin Harbors	24,448	13.7	NA	336,538	6,371	14.9	7.1%	101,868
Copalis	13,763	13.1	NA	180,405	15,103	12.6	5.5%	200,964
Mocrocks	7,077	13.2	NA	93,206	16,391	14.5	4.0%	247,102
Kalaloch (3)	3,915	11.0	NA	42,978	1,405	10.3	NA	14,456
Total	87,464			1,164,150	65,110			901,596

Note:

1. Seasonal summary from Fall of one year through Spring of the next year. Detailed information available in WDFW Razor Clam progress report.
2. Percent wastage is the percent of damaged/dead clams found in holes.
3. Data collection at Kalaloch began in the Fall 1995.
4. Total number of clams includes wastage.

Table 41. 2000 Recreational Use and Harvest Estimates from Intertidal Areas East Of Dungeness Spit

Marine Areas	Beach Name	User Trips (1)	Pounds of Clams Harvested								# Oysters	
			Manila	Native	Littleneck	Butter	Cockle	Soft Shell	Horse	Geoduck		Total
6	Cline Spit	199	18	279	298	447	41	2	152	9	1,246	518
	Dungeness	32	60		60	12	3	6	16		157	
	N. Sequim Bay Sp	1,239	22	2,818	2,840	170	225	3	533	120	6,731	8,320
	Old Town	18	2	23	27	40	4		14	1	111	47
	Pitship Point	64	8	90	98	143	16	1	48	3	407	169
	Sequim Bay Sp	2,408	86	5,241	5,327	154	1,278	37	1,638	374	14,135	15,844
	Maynard	36	3	51	54	82	8		28	2	228	95
7	Spencer Spit Sp	630		622	622	39	12		354		1,649	
	English Camp	441	14	1,190	1,204		51				2,459	
	N English Camp	632		1,866	1,872	620	215	2	27		4,602	
	Birch Bay Sp	13,027	1,229	21,121	22,350	17,024	451	115	5,366		67,656	
	Samish Is Rec Area	5,022		6,734	6,734	24,405	137		897		38,907	
8-1	Camano Island Sp	3,858		10,539	10,539	9,776	714		45		31,613	
	Penn Cove	2,932		3,314	3,314	20,459	207		727		28,021	
	North Penn Cove	1,619		2,607	2,607	2,632	669	6	553		9,074	
	Long Pt	4,133	9,449	1,088	1,088	1,347	173	153	39		13,337	
	Ala Spit	4,673		2,874	2,874	6,107	6,107		44		18,006	
	Freeland Cp	139	19	259	278	1,836	2	119	4		2,517	
	Winas-Maylor Pt-East	1,493		1,014	1,014	7,847		882			10,757	
8-2	Kayak Point Cp											
9	Double Bluffs Sp											
	Fort Flagler Sp	3,963		9,938	9,938	3,318	1,681		1,162		26,037	
	Oak Bay	60	6	84	90	135	12	1	46	3	377	156
	Oak Bay Sp	3,466	1,217	2,826	4,043	8,605	671	17	5,842	47	23,268	1,689
	P. T. Ship Canal	2,648	36	1,303	1,340	16,290	692	27	2,432	12	22,132	62
	S Indian Island	3,012	682	3,292	3,974	2,936	149	78	1,308		12,419	4,141
Mystery Bay Sp	2										43	
10	Blake Island Sp	153	12	120	133	215		4	36	15	535	1,383
	E Indianola	156	13	123	136	219		5	37	15	548	1,414
	W Pt Jefferson	57	5	45	50	80		2	14	6	202	518
	Bremerton Coal	419	32	325	357	716	1	11	95	38	1,575	3,560
	Brownsville	60										
	Illahee Sp	1,525	147	1,345	1,492	169	4	62	301	155	3,675	18,287
	Point White	115	9	90	100	161		3	27	11	401	1,038
	S Agate Pass	87										
	SW Agate Pass	173										

Table 41. 2000 Recreational Use and Harvest Estimates from Intertidal Areas East Of Dungeness Spit

Marine Areas	Beach Name	User Trips (1)	Pounds of Clams Harvested								# Oysters	
			Manila	Native	Littleneck	Butter	Cockle	Soft Shell	Horse	Geoduck		Total
12	Shine Tidelands	2,966	390	2,343	2,732	3,955	2,694	67	1,917		14,098	5,017
	Wolfe Prop Sp	5,036	4,128	1,267	5,395	1,725	6,375	91	3,791		22,772	38,156
	Coast Broad Sp	683	336	224	560	295	377	12	115	6	1,925	1,211
	Coast E Dabob	126	62	41	103	55	70	2	21	1	355	1,211
	Coast Property	7,688	11,776	206	11,982			1			23,965	47,623
	Dnr 57-B Brown	2,668	3	1,276	1,280	6,976	72		2,073		11,680	
	DNR 59-A Case S	56	28	18	46	24	31	1	9		157	537
	Dosewallips Sp	8,341	14,187	216	14,403	26	4	100	81	194	29,211	108,928
	Kitsap Memorial	2,002	3	450	453	623	8,104	21	595	1	10,250	16,504
	Pt Whitney	2,553	1,250	61	1,311	124	8				2,754	33,794
	Eagle Creek	1,376	58	78	135	64	343	7	1		686	21,408
	DNR-44A W Dewatto	786	185	18	203		8	2			416	13,186
	Potlatch West S	6,253	952	5,782	6,734	3,815	2,108	348	222		19,961	46,193
	Potlatch-DNR	5,556	410	5,389	5,799	8,643	2,635				22,876	
	Potlatch-East S	1,906		155	155	8,024	206				8,540	11,612
Rendsland Creek	2,069	899	602	1,501	243	485	20	780		4,530	31,086	
S Lilliwaup	370	181	120	301	158	204	7	61	3	1,035	3,536	
Twanoh Sp	9,934										160,975	
13	Saltwater Sp											
	SE Narrows	No data										
	Cutts Island	154	223	75	298	4	2	1	39	2	644	1,401
	Kopachuck Sp	946	1,621	311	1,931	36	17	1	137	45	4,099	9,025
	Penrose Point	582	396	174	570	627	113	14	822		2,716	5,025
	Purdy County Pr	1,423	2,061	693	2,754	33	19	13	357	19	5,949	12,924
	North Bay Res-E	845	1,303	192	1,495		1	18	2		3,011	8,587
	Frye Cove	1,082	150	1,501	1,651	46	26	10	799	12	4,195	12,371
	Gallagher Cove S12	78	113	38	151	2	1	1	20	1	327	711
	Gallagher Cove S13	58	84	28	112	1	1	1	15	1	243	527
	Hope Island Sp	33	48	16	850	1			8		923	303
	Oakland Bay Res-Ch	85	123	41	164	2	1	1	21	1	354	771
	Oakland Bay Res-N Ch	1,369	2,985		2,985	1		1			5,972	9,639
Oakland Bay Res-Dike	410	594	200	793	10	5	4	103	5	1,714	3,723	
Total		125,925	57,618	102,736	151,700	161,497	37,433	2,280	33,774	1,102	548,140	663,268

(1) Note: Includes Clam and Oysters

Table 42. 2000 Hood Canal Sport Shrimp Fishery

Date	Pots Fished	Pounds	CPUE
May 20	5,473	21,528	3.93
May 24	3,633	17,763	4.89
May 27	2,390	5,761	2.41
May 31	2,261	10,290	4.55
June 3	2,447	12,432	5.08
June 7	955	4,742	4.97
June 21	912	4,494	4.93
TOTAL	18,071	77,010	4.26

Table 43. 2000-2001 Sport Crab Pot Fishery

Catch Code and Catch Area		Pot Days	Number of Dungeness Crab
20A	Gulf of Georgia	20,234	39,583
20B	North of San Juan Islands	4,622	5,288
21A	Bellingham Bay	8,489	11,387
21B	Samish Bay	9,334	14,536
22A	San Juan Islands	64,461	73,756
22B	Anacortes	13,427	26,023
23D	Port Angeles Harbor	9,771	9,352
24A	Skagit Bay	56,354	94,595
24B	Port Susan	25,877	45,485
24C	Saratoga Passage	44,068	74,573
24D	Holmes Harbor	9,441	14,618
25A	Dungeness & Sequim Bays	39,311	31,130
25B	Admiralty Inlet	1,584	1,103
25C	Port Ludlow/Port Gamble	13,093	12,080
25D	Port Townsend Bay	19,214	13,384
25E	Discovery Bay	10,568	3,577
26A	Useless Bay, Port Gardner	27,907	32,886
26B	Seattle, Kingston	18,718	17,701
26C	Port Orchard	1,439	1,130
26D	Colvos Pass, East Pass	3,165	2,200
27A	Upper Hood Canal	29,243	76,673
27B	Central Hood Canal	7,887	15,493
27C	Lower Hood Canal	27,344	70,802
Total		465,551	687,355

This program receives Federal financial assistance from the U.S. Fish and Wildlife Service. It is the policy of the Washington State Department of Fish and Wildlife (WDFW) to adhere to the following: Title VI of the Civil Rights Act of 1964, Section 504 of the Rehabilitation Act of 1973, Title II of the Americans with Disabilities Act of 1990, the Age Discrimination Act of 1975, and Title IX of the Education Amendments of 1972. The U.S. Department of the Interior and its bureaus prohibit discrimination on the basis of race, color, national origin, age, disability and sex (in educational programs). If you believe that you have been discriminated against in any program, activity or facility, please contact the WDFW ADA Coordinator at 600 Capitol Way North, Olympia, Washington 98501-1091 or write to:

U.S. Fish and Wildlife Service
Office of External Programs
4040 N. Fairfax Drive, Suite 130
Arlington, VA 22203