

NEWS RELEASE

Washington Department of Fish and Wildlife
August 4, 2010
Contact: Fish Program, (360) 902-2700

WDFW issues corrections to the 2010-11 Sportfishing Rules pamphlet

OLYMPIA — The Washington Department of Fish and Wildlife (WDFW) has issued corrections to the 2010-2011 “Fishing in Washington” Sportfishing Rules Pamphlet.

Anglers are advised to update their copies of the fishing rules pamphlet, which became effective May 1, 2010. The pamphlet is available on WDFW’s website at <http://wdfw.wa.gov/fishing/regulations/>

WDFW will provide additional updates and corrections as needed. For more information regarding these changes, call Fish Program Customer Service at (360) 902-2700.

CORRECTIONS

Page 36 – Baker River (Skagit Co.) from fish barrier dam to headwaters and all tributaries and their tributaries except Channel Creek.

Error: The pamphlet incorrectly lists an “All species” season.

Correction: The season should be listed as “All Game Fish.”

Page 36 – Channel Creek (Whatcom Co.)

Error: The pamphlet incorrectly lists an “All species” season.

Correction: The season should be listed as “All Game Fish.”

Page 37 – Pilchuck Creek (Snohomish Co.) from Pilchuck Falls upstream including all tributaries and their tributaries, including tributaries to Lake Cavanaugh.

Error: The pamphlet incorrectly lists an “All species” season.

Correction: The season should be listed as “All Game Fish.”

Page 37 – Boulder River (Snohomish Co.) from Boulder Falls upstream.

Error: The pamphlet incorrectly lists an “All species” season.

Correction: The season should be listed as “All Game Fish.”

Page 38 – Canyon Creek (Snohomish Co.) (South Fork Stillaguamish)

Error: The open section of the creek was not designated.

Correction: The Creek should be listed as: Canyon Creek (Snohomish Co.) (South Fork Stillaguamish) from mouth to forks.

Page 42 – Puyallup River (Pierce Co.) from City of Puyallup outfall structure across the river from the junction of Freeman Rd. and N. Levee Rd. to Carbon River.

Error: The pamphlet incorrectly lists ALL SPECIES – Aug. 16-Nov. 30: night closure, anti-snagging rule, and barbless hooks required.

Correction: The rule takes effect on Aug. 1. It should read: ALL SPECIES – Aug. 1- Nov. 30: night closure, anti-snagging rule, and barbless hooks required.

Page 45 – Dewatto River (Mason Co.) from mouth to Dewatto-Holly Rd. Bridge.

Error: The Oct. 1-Oct. 31 All Game Fish season was omitted from the pamphlet.

Correction: The correct All Game Fish seasons are: First Sat. in June-Aug. 15, and Oct. 1-Oct. 31. Catch-and-release. Selective gear rules. Internal combustion motors prohibited.

Page 50 – Chehalis River (Grays Harbor Co.) from mouth (Hwy. 101 Bridge in Aberdeen) to Fuller Bridge.

Error: The SALMON season is incorrect.

Correction: The correct SALMON seasons are:

- SALMON: Sept. 16-Oct. 31. Min. size 12". Daily limit 6. Up to 2 adults may be retained. Release CHINOOK and CHUM.
- SALMON: Nov. 1-Jan. 31. Min. size 12". Daily limit 6. Up to 2 adults may be retained. Release CHINOOK, wild COHO, and CHUM.

Page 54 – Joe Creek (Grays Harbor Co.) (Pacific Beach) from State Hwy. 109 Bridge to Ocean Beach Rd. Bridge.

Error: The pamphlet incorrectly lists the season as All Game Fish.

Correction: The correct season should have been listed as Other Game Fish.

Page 61 - Wishkah River (Grays Harbor Co.) from weir upstream.

Error: A TROUT season was incorrectly omitted from the pamphlet. The listing of the All Game Fish season is also incorrect.

Correction: The correct seasons should have been listed as: Trout: First Sat. in June-Oct. 31. Min. size 14". Daily limit 2. Other Game Fish: First Sat. in June-Oct. 31. Statewide min. size/daily limit.

Salmon Identification

OCEAN PHASE



Chinook Salmon

Large black spots on back, dorsal fin, and both the upper and lower lobes of the tail. Dark mouth with a black gum line. Average size scales. Silver pigment on the tail. Prominent teeth.



Coho Salmon

Black spots on back with a few spots on the upper portion of the tail. White mouth with a white gum line and dark tongue. Average size scales. Silver pigment on the tail.



Chum Salmon

No prominent spots on back or tail (small speckles may be present). White mouth with a white gum line and dark tongue. Large scales. Caudal peduncle (tail base) is slender. Silver pigment on the tail.



Pink Salmon

Generally large black spots on back and heavy oval shaped black blotches on the upper and lower lobes of the tail. White mouth with a black gum line and tongue. Very small scales. No silver pigment on the tail. Flexible (rubbery) lower jaw.



Sockeye Salmon

No prominent spots on back or tail (small speckles may be present). White mouth with a white gum line and dark tongue. Average size scales. Prominent gold-colored eyes. No silver pigment on the tail. Small teeth.

SPAWNING PHASE



Chinook Salmon

Chinook salmon do not display the conspicuous morphological changes of pink, chum, and sockeye salmon during the spawning stage. Typically, Pacific salmon turn from the silvery bright ocean coloration to a darker bronze color as they approach spawning.



Coho Salmon

In mature male coho salmon, the upper jaw forms an elongated hooked snout and the teeth become greatly enlarged. The male is generally brighter than that of the female and is characterized by the dorsal surface and head turning bluish-green. The sides of the males develop a broad red streak. In females, the jaws also elongate but the development is much less extreme than that of the males.



Chum Salmon

Chum salmon display characteristic olive-green and purple (calico) vertical bars on the sides of the body as they approach the spawning phase. Both males and females develop hooked noses and large canine-like teeth



Pink Salmon

As male pink salmon begin to enter the spawning phase, they develop a prominent hump in front of the dorsal fin, an elongated snout, and large teeth. Body color in both males and females darkens from a bright silvery appearance to a pale slate, brownish, or greenish-gray on the back and sides and a pale whitish color below. Small, oblong irregular black spots are present on the back and sides, and on the dorsal and tail fins.



Sockeye Salmon

Sockeye turn bright red on their body, and olive-green on the head. Males develop a prominent hump in front of the dorsal fin; the male's snout becomes elongated; and canine-like teeth grow out of the receding gums. Females undergo a distinct color change, but retain their body shape.

Atlantic Salmon



Male Atlantic salmon



Female Atlantic salmon

Atlantic salmon have large black spots on the gill covers and back, and rarely any spots on the tail fin. Their scales are large, there is no red stripe along the lateral line, and they have 8-10 anal fin rays. Atlantic salmon may be taken from marine waters during any open salmon season, and from anadromous (not landlocked) freshwater during any open salmon or trout season. Anglers may not, however, continue to fish for Atlantic salmon after a daily limit of another species of salmon has been retained. In landlocked lakes, Atlantic salmon may be taken as part of the trout daily limit. Seasons and size limits in place for Atlantic salmon in landlocked lakes. Opportunities to harvest Atlantic salmon beyond those listed in the pamphlet will be announced to the news media and carried on WDFW's recreational fishing hotline. Please report sightings to (360) 902-2700.

Chinook, Coho, and Pink Salmon Identification

Chinook

Jaw- has a dark mouth and black gums at the base of its teeth. Immature chinook are known as a "blackmouth."



Coho

Jaw- mouth is white and the gum line is almost white, but the tongue may be black. The teeth are sharp and strong.



Pink

Jaw- mouth of a pink is white, but the gums and tongue are black, as they are in a Chinook. It does not have "teeth" on its tongue.



Tail- both the upper and lower lobes of the tail are covered with spots and silver is prominent.



Tail- has just a few scattered spots, usually on the upper lobe, with silver streaks. It has a wide caudal peduncle.

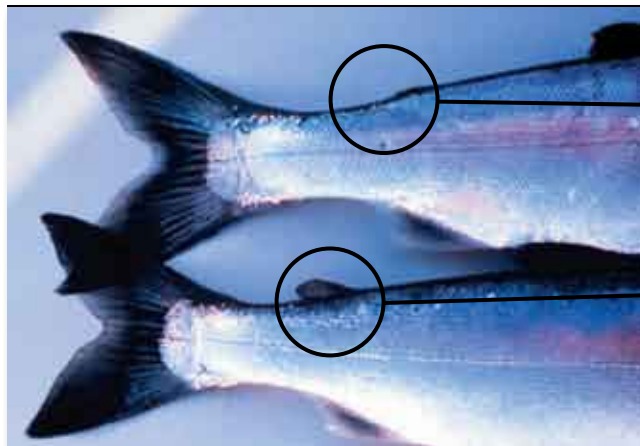


Tail- is covered with large oval spots. It does not have silver on the tail. The scales are very small compared to other salmon of the same size.



Wild/Hatchery Identification

In order to provide salmon & steelhead fishing opportunities, WDFW and the Tribes have marked salmon & steelhead by clipping the adipose fin (a small fatty fin directly behind the dorsal fin). In areas designated "release wild <insert fish name>", fin-clipped salmon and steelhead are the only fish that may be retained. The picture to the right shows a wild coho salmon and a fin-clipped or hatchery coho salmon. Please be careful in releasing wild fish- they are your fishing future! For tips on the best way to release fish, please see page 21. In Marine Areas 5-13, it is illegal to bring a wild salmon or a species of salmon aboard a vessel if it is unlawful to retain those salmon. "Aboard a vessel" is defined as inside the gunwale. In Marine Area 2-2, it is unlawful to totally remove salmon from the water if it is illegal to retain those fish, except anglers fishing from boats 30' or longer are exempt.



Hatchery coho
Adipose fin has been clipped - leaving a healed scar in its place.

Wild coho
Intact adipose fin.

Marine Fish Identification

Yelloweye Rockfish

Orange-red to yellow body color, bright yellow eye, and fins may be tinged with black. Also called rasphead rockfish and red snapper. A large rockfish.



Copper Rockfish

Body variable in color with light colored stripe along the rear. Two fins on back.



Black Rockfish

Body black or grey in color. Two fins on back. Also called seabass and black bass.



Blue Rockfish

Body is blue or black. The gill cover has several vague diagonal stripes. The anal fin is vertical or slanted posteriorly.

Quillback Rockfish

Body brown with yellow mottling. High fin on back with yellow mottling. May have freckles on head and throat. Spines on head.



Canary Rockfish

Bright orange or yellow body, mottled with grey. Fins are orange without black tinge. Three stripes across the head.



Pacific Hake

Body dark or silver grey becoming silvery below. Two fins on back, the second being deeply notched. Black inside mouth. Large mouth with sharp teeth. Also called whiting.



Pacific Cod

Brown to grey body with lighter mottling. Three fins on back and a large "whisker" under lower jaw. Also called true cod and grey cod.



Cabezon

Body olive green to grey with lighter mottling. Two fins on back. Flaplike cirrus on head. Small teeth.



Lingcod

Body dark brown, grey or green with mottling on sides. A single long fin on back with only one notch. Large mouth with large teeth. Can reach five feet in length.



Walleye Pollock

Body brown with mottling. Three fins on back. The "whisker" under lower jaw is absent or very small.

Rockfish photos courtesy of Alaska Sea Grant

Marine Area Rules

1 • • • • Season and Daily Hours:

During an open season, marine waters are open 24 hours per day, except as noted for night closures.

2 • • • • Quota Management:

SALMON, HALIBUT, and some SHELLFISH are managed by quotas in many marine areas. These fisheries close when the quotas have been taken. Closures will be announced to local news media and will be included in the Fishing Hotline and Shellfish Rule Change Hotline messages.

NOTE: Emergency rules may occur throughout the year and will supersede the rules contained in this pamphlet. Changes can be found by calling the WDFW Fishing Hotline (360) 902-2500 or Shellfish Rule Change Hotline (866) 880-5431, contacting statewide customer service (360) 902-2700, or by visiting the WDFW website <http://wdfw.wa.gov>.

Rules listed below are General Rules. Specific Area Rules are listed by area.

Species Rules

Hatchery **STEELHEAD** may be caught and released until the daily limit is retained. If a fish has swallowed the hook or is hooked in the gill, eye, or tongue, it should be kept if legal to do so. Wild **STEELHEAD** must be released.

SALMON - Barbless hooks only. **Only single-point hooks and a hand-held rod and line may be used in Areas 1-13.** Minimum size for **CHINOOK** in Areas 1-4 is 24", in Areas 5-13, 22", except no minimum size in the Hoodspout Hatchery Zone. Minimum size for **COHO** in Areas 1-4 is 16"; except in Area 2-1 after July 31 and Area 2-2 after Sept. 15, the minimum size is 12" for all **SALMON**. Other Marine Areas and species - no minimum size. Handling Rule: in Areas 5-13, it is illegal to bring a wild **SALMON** or a species of **SALMON** aboard a vessel if it is unlawful to retain those **SALMON**. "Aboard a vessel" is defined as inside the gunwale. Also see special Handling Rule for Area 2-2 for Sept. 16-Nov. 30.

WHITE STURGEON - Only one single-point barbless hook and bait is allowed when fishing for **STURGEON**. Green **STURGEON** may not be retained.

HALIBUT - Hook and line angling and spearfishing only. A hand-held line is permitted. Only one line with up to two hooks may be used. **HALIBUT** may be shot or harpooned while landing. May not be landed in a port closed to **HALIBUT** fishing except **HALIBUT** lawfully caught in Canada; angler must have Canadian license. See page 20, *Fish & Shellfish caught in Canada*.

BOTTOMFISH, TUNA, AND MACKEREL - Hook and line angling, spearfishing, and bow and arrow fishing only.

ROCKFISH - You may not land **YELLOWEYE** or **CANARY** rockfish into any port in Washington. Unlawful to fish for or retain rockfish in Areas 6-13.

UNCLASSIFIED MARINE FISH - CLOSED

OTHER FOOD FISH - These are species which occur in our waters irregularly, usually in coastal areas and include **BARRACUDA**, **WHITE SEA BASS**, **BONITO**, **YELLOWTAIL**, and **POMFRET**. Daily limit is two of each species.

SIXGILL SHARK - It is illegal to retain or remove **SIXGILL SHARKS** from the water in Areas 5-13.

Species Rules

FORAGE FISH - Forage fish jig or forage fish dip net only. Only one dip net may be used at a time. Gear must be held by the rigid handle at all times and may not be used from a vessel while under power. Anglers with the reduced-fee license or a Designated Harvester Card may use a forage fish dip net with a hand-operated gate. Jig gear may have up to three treble hooks or nine single-point hooks, not to exceed 3/8" between point and shank. While fishing in Areas 5-11 & 13, a second line using forage fish jig gear may be used to fish for forage fish.

You may use forage fish jig gear in Columbia River waters from the Buoy 10 line to the Rocky Point/Tongue Point line.

Possession Limits

VESSEL LIMITS MARINE AREAS 1-6: Anglers aboard a boat may only possess one daily limit of fish or **SHELLFISH** in fresh form.

SALMON - Two daily limits of fresh **SALMON**. An additional 40 pounds of salmon may be possessed in a frozen or processed form.

TROUT - Two daily limits of hatchery **STEELHEAD**.

STURGEON - Two daily limits in any form. Statewide annual limit 5.

BOTTOMFISH - Two daily limits in any form.

HALIBUT - Two daily limits in any form, except only one limit while aboard the fishing vessel. For **HALIBUT** caught in Canadian waters, contact Department of Fisheries and Oceans Canada (DFO) or visit their website at http://www.pac.dfo-mpo.gc.ca/recfish/Opportunities/finfish_e.htm. for updated Canadian regulations.

TUNA - **ALBACORE**, **YELLOWFIN**, **SKIPJACK**, and **NORTHERN BLUEFIN** and **MACKEREL** - No possession limit or daily limit.

SHELLFISH - One daily limit of fresh **SHELLFISH**. Additional **SHELLFISH** may be possessed in a frozen or processed form. See page 128 for Shellfish/Seaweed rules and page 131 for the shellfish health advisory.

FORAGE FISH (**HERRING**, **ANCHOVIES**, **SARDINES**, **SAND LANCE**, and **SMELT**) - Two daily limits in fresh form. Additional **FORAGE FISH** may be possessed in frozen or processed form.

Tackle/Gear Rules

ALL FISHING GEAR - Must be kept in immediate control, and gear may not be left unattended while fishing.

HOOK AND LINE ANGLING - Unless noted differently, only one line with up to 2 hooks is allowed. **Barbless hooks are required for all species in Marine Areas 5-13, except forage fish jig gear.** When fishing for **SALMON** in Marine Areas 1-13, only single-point barbless hooks may be used.

FORAGE FISH DIPNET - A section of netting (maximum mesh size is 5/8" stretched mesh) distended by a rigid frame not exceeding 36" across and directly attached to a rigid handle. May only be used for forage fish or squid.

LANDING A FISH - A club or dipnet (landing net) may be used to assist landing a legal fish taken by legal gear. A gaff may only be used to land a legally hooked **HALIBUT**, **TUNA**, or **DOGFISH SHARK** that will be retained. **HALIBUT** may be shot or harpooned while landing.

DOWNRIGGERS - May be used with a line if the line releases from the downrigger while playing and landing the fish.

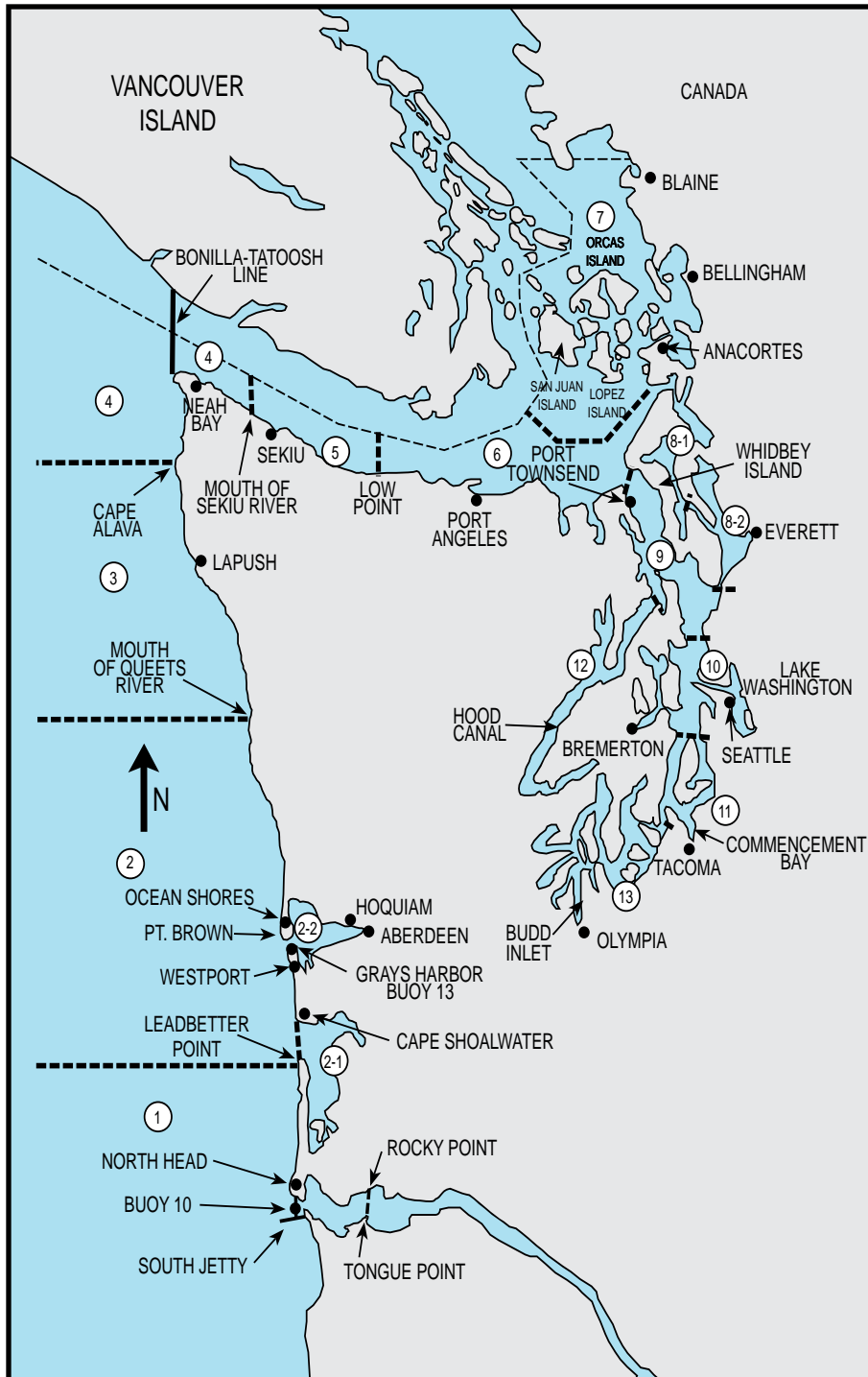
ROD HOLDERS - May be used; the rod must be easily removed without delay; rod may be left in the holder while playing the fish.

ELECTRIC REELS - May be used if designed for sport fishing and attached to a fishing rod.

SPEARFISHING - The diver must be swimming or floating in the water while spearfishing. The use of explosives or bullets attached to the spear ("bang sticks") is prohibited.

In Washington waters where a saltwater license is valid, each angler aboard a vessel may continue to deploy angling gear or shellfish gear until the daily limit of fish and shellfish for all licensed and juvenile anglers aboard has been achieved.

Marine Area Definitions and Codes



AREA DEFINITIONS AND CODES

1. **ILWACO** - west of the Buoy 10 line at the Columbia River mouth, north to Leadbetter Point.
2. **WESTPORT-OCEAN SHORES**- from Leadbetter Point north to the Queets River, excluding Willapa Bay and Grays Harbor.
 - 2-1. **WILLAPA BAY** - east of a line from Leadbetter Point to Cape Shoalwater.
 - 2-2. **GRAYS HARBOR** - east of a line from the outermost tip of the north jetty to outermost exposed end of the south jetty.
3. **LAPUSH** - from the Queets River north to Cape Alava.
4. **NEAH BAY** - from Cape Alava north and inside Juan de Fuca Strait to the Sekiu River.
5. **SEKIU AND PILLAR POINT** - from mouth of the Sekiu River east to Low Point, mouth of the Lyre River.
6. **EAST JUAN DE FUCA STRAIT** - from Low Point east to the Partridge Point - Point Wilson line, north to the line from Trial Island (near Victoria B.C.) - Vessel Traffic Separation Buoy "R" - Smith Island to the Lawson Reef Buoy, to Northwest Island, to the Initiative 77 marker on Fidalgo Island.
7. **SAN JUAN ISLANDS** - all marine waters north of the Trial Island line (described under Area 6) to the United States-Canada boundary.
 - 8-1. **DECEPTION PASS, HOPE ISLAND, AND SKAGIT BAY** - from West Point to Reservation Head eastward through Deception Pass, including all waters of Swinomish Slough and Skagit Bay, and the portion of Saratoga Passage north and west of a line from East Point Light to light on Camano Island (Saratoga Pass Light #4FI Red 4 Sec.).
 - 8-2. **PORTS SUSAN AND GARDNER** - east of East Point Light-Camano Island Light line (described in 8-1 above) and north of the Possession Point-Shipwreck line (described in 9 below).
9. **ADMIRALTY INLET** - all waters inside and south of the Partridge Point - Point Wilson line, south and west of a line from Possession Point 110° true to shipwreck, north of the Hood Canal Bridge, and north of the Apple Cove Point-Edwards Point line.
10. **SEATTLE-BREMERTON AREA** - south from the Apple Cove Point-Edwards Point line to a line projected true east- west through the north tip of Vashon Island.
11. **TACOMA-VASHON ISLAND** - south from a line projected true east west through the north tip of Vashon Island to the northernmost Tacoma Narrows Bridge.
12. **HOOD CANAL** - all waters south of the Hood Canal Bridge.
13. **SOUTH PUGET SOUND** - all waters south of northernmost Tacoma Narrows Bridge.

Marine Area 1 - Ilwaco

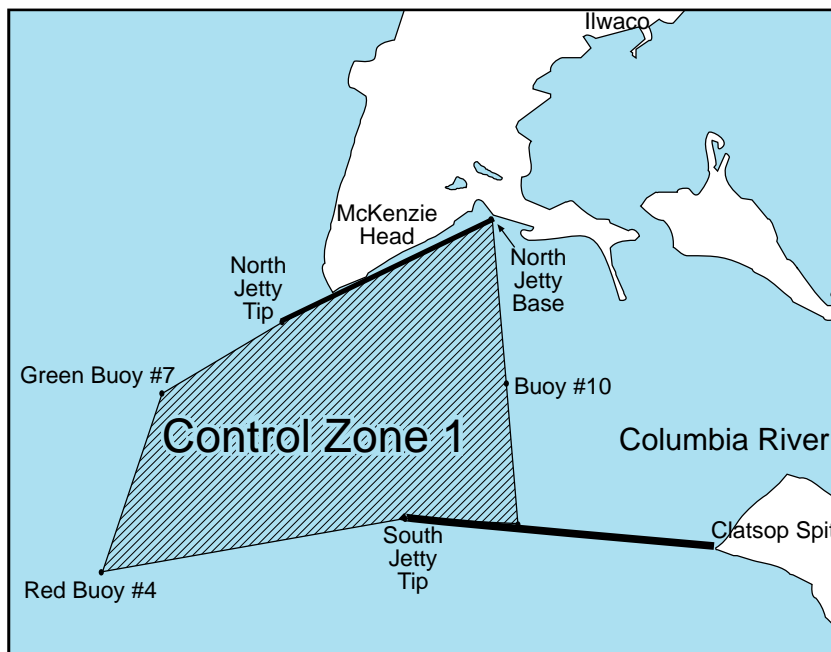
(West of the Buoy 10 line at the Columbia River mouth, north to Leadbetter Point)

SPECIES	SEASON	ADDITIONAL RULES
SALMON - ENTIRE AREA	June 12-June 30	CHINOOK - min. size 24". Other SALMON species - no min. size. Release COHO and wild CHINOOK. Daily limit 2 (combined). Season may close earlier if coastwide guideline of 12,000 CHINOOK is attained. See Control Zone 1 closure below.
	July 1-Sept. 30	CHINOOK - min. size 24". COHO - min. size 16". Other SALMON species - no min. size. Daily limit 2 (combined). Only 1 CHINOOK may be retained. Release wild COHO. Season may close earlier if quota of 33,600 hatchery COHO or 13,100 CHINOOK guideline is attained. See Control Zone 1 closure below.
TROUT	Year-round	Catch-and-release except up to 2 hatchery STEELHEAD may be retained.
STURGEON	Year-round	Min. size 38" fork length. Max. size 54" fork length. Daily limit 1. Release GREEN STURGEON.
TUNA and MACKEREL	Year-round	No min. size. No daily limit.
HERRING, SMELT, ANCHOVY, SARDINE, and SAND LANCE	Year-round	No min. size. Daily limit 10 lbs., all species combined. All SMELT caught must be kept and count toward the daily limit.
PACIFIC HALIBUT	May 1-quota or July 18, whichever comes first	Open Thursdays through Saturdays ONLY. No min. size. Daily limit 1. Retention of BOTTOMFISH, except SABLEFISH and PACIFIC COD, is prohibited with a HALIBUT onboard. Season may close earlier if quota is attained. Season will re-open August 6 (Friday-Sunday) until remaining quota is taken.
BOTTOMFISH	Year-round season. Daily limit is 15 BOTTOMFISH (see definition page 18) regardless of species, subject to individual limits and seasons shown below. No BOTTOMFISH (except SABLEFISH and PACIFIC COD) may be landed in Area 1 if a HALIBUT is onboard from May 1 - Sept. 30.	
LINGCOD	Mar. 13-Oct. 16, 2010 Reopens Mar. 19, 2011	Min. size 22". Daily limit 2.
SURFPERCH	Year-round	No min. size. Daily limit 15. Except SHINER PERCH daily limit 15: not included in BOTTOMFISH limit.
ROCKFISH	Year-round	No min. size. Daily limit 10. No CANARY or YELLOWEYE may be retained.
ALL OTHER BOTTOMFISH	Year-round	No min. size. Daily limit is 15 BOTTOMFISH, regardless of species.
OTHER FOOD FISH	Year-round	No min. size. Daily limit 2 of each species.
ALL OTHER FISH	Year-round	CLOSED

Control Zone 1: An area at the Columbia River mouth bounded on the west by a line running northeast/southwest between the red lighted Buoy #4 (46°13'35"N/124°06'50"W) and the green lighted Buoy #7 (46°15'09"N/124°06'16"W); on the east by the Buoy #10 line which bears north/south at 357° true from the south jetty at 46°14'00"N/124°03'07"W to its intersection with the north jetty; on the north by a line running northeast/southwest between the green lighted Buoy #7 to the tip of the north jetty (46°14'48"N/124°05'20"W), and then along the north jetty to the point of intersection with the Buoy #10 line; and on the south by a line running northeast/southwest between the red lighted Buoy #4 and the tip of the south jetty (46°14'03"N/124°04'05"W), and then along the south jetty to the point of intersection with the Buoy #10 line, is CLOSED to fishing for SALMON at all times except open to fishing from the north jetty when adjacent waters north of the Control Zone are open to fishing for SALMON or the Buoy 10 fishery is open.

Buoy 10 season: See Columbia River listing in East-side Rivers-Special Rules section.

Buoy 10 Line: Defined as a true north and south line projected through Buoy 10, which marks the channel leading into the Columbia River at its mouth (a line from the Lewis and Clark Interpretive Center atop Cape Disappointment Rock through Buoy 10 to the south jetty).



Columbia River North Jetty: The jetty is open to fishing for SALMON 7 days a week when the Buoy 10 or the Marine Area 1 SALMON fishery is open. Barbed hooks allowed through Dec. 31, 2010. Beginning Jan. 1, 2011, barbless hooks only for SALMON and STEELHEAD. Daily limit and minimum size restrictions follow the most liberal regulations of either area.

Reciprocity Rules: When angling from a boat in the concurrent waters of the Columbia River or the Pacific Ocean within 3 miles of shore between Cape Falcon, Oregon, and Leadbetter Point, Washington, either a Washington or an Oregon fishing license is valid.

Rockfish Conservation

- How You Can Help

Many populations of rockfish are in low abundance in both Puget Sound and the Washington coast. As a result, Puget Sound in Marine Areas 6-13 is closed to fishing for rockfish and in other areas of the Sound, the daily limit is quite restrictive. Black rockfish and blue rockfish appear very similar, but populations of blue rockfish are much smaller than are populations of black rockfish. We encourage anglers to voluntarily release blue rockfish in areas where their retention is allowed. Mortality of released rockfish can be very high, especially for fish brought up from water deeper than 120 feet. Rockfish have a gas filled swim bladder, which allows the fish to

maintain buoyancy in the water. Unlike salmon, rockfish have a closed bladder which means they cannot rapidly adjust the volume of gas in the bladder. When fish are brought to the surface, the gas in the bladder expands which can cause internal damage, protrusion of the stomach from the mouth and may cause damage to the eyes, and result in high mortality rates for released rockfish. This results in wastage of the resource and may delay the time required for rockfish stocks to recover to healthy levels. However, there are a few simple steps you can take to improve their chances of survival upon release.

How to Release Rockfish

If you catch rockfish while fishing for other species, the best thing to do is move to another location where the rockfish are not as abundant. If you do hook a rockfish and want to release it, return the fish to the water as quickly as possible and avoid touching the eyes or gills. In water over 60 feet deep, the fish may have trouble resubmerging. There are several methods you can use to help. Try using an inverted plastic crate (such as a milk crate) with a weight and line attached.

Drop the crate over the rockfish and lower it down to depth, then pull up, releasing the rockfish. Or you might try using a large, weighted barbless hook and placing it in the skin membrane near the jaw of the rockfish, then lowering it to depth and releasing the fish. Additionally, commercially made release mechanisms are available for purchase. Try to get the fish down to the depth at which you captured it or at least to 40 feet of depth. Here is a link to our website which has additional information: <http://wdfw.wa.gov/conservation/rockfish.html>

Venting - please do not puncture the side of a rockfish with a needle or similar sharp object. Venting can easily puncture an organ and cause serious injury or introduce infection.



Black rockfish - Body color is black to gray with light mottling on the side. The anal fin is rounded. Upper jaw extends past the rear of eye. Dorsal fin is mottled.



Blue rockfish- Body color is blue or black. The gill cover has several vague diagonal stripes. The anal fin is vertical or slanted towards the tail. Upper jaw extends to middle or rear of eye.

How to Tell a Black Rockfish From a Blue Rockfish

We encourage anglers to voluntarily release blue rockfish in areas where their retention is allowed.

Marine Area 2 - Westport - Ocean Shores

Marine Area 2-1 (Willapa Bay) and Marine Area 2-2 (Grays Harbor)

Marine Area 2 Definition: from Leadbetter Point north to the Queets River, excluding Willapa Bay and Grays Harbor

Marine Area 2-1 (Willapa Bay) Definition: east of a line from Cape Shoalwater to Leadbetter Point

Marine Area 2-2 (Grays Harbor) Definition: east of a line from the tip of the north jetty to exposed end of the south jetty

SPECIES	SEASON	ADDITIONAL RULES
SALMON - AREA 2	June 12-June 30	CHINOOK - min. size 24". Other SALMON species - no min. size. Release COHO and wild CHINOOK. Daily limit 2 (combined). Season may close earlier if coastwide guideline of 12,000 CHINOOK is attained.
	July 4-Sept. 19	Open Sundays through Thursdays ONLY. CHINOOK - min. size 24". COHO - min. size 16". Other SALMON species - no min. size. Daily limit 2 (combined). Only 1 CHINOOK may be retained. Release wild COHO. Season may close earlier if quota of 24,860 hatchery COHO or 28,000 CHINOOK guideline is attained. Grays Harbor Control Zone CLOSED beginning Aug. 1, see description below.
AREA 2-1 (east of a line from Cape Shoalwater to Leadbetter Pt.)	July 4-July 29	Open concurrent with the ocean (Area 2) for SALMON. Area 2 rules apply.
	Aug. 1-Jan. 31	Min. size 12". Daily limit 6. Up to 3 adults may be retained. Release wild CHINOOK, wild COHO, and CHUM.
AREA 2-2 (west of the Buoy 13 line)	CLOSED	
AREA 2-2 (east of the Buoy 13 line)	ALL SALMON required to be released may not be totally removed from the water, except anglers fishing from boats 30' or longer as listed on either their state or Coast Guard registration are exempt.	
	Sept. 16-Nov. 30	Min. size 12". Daily limit 2. Release CHINOOK and CHUM.
Westport Boat Basin and Ocean Shores Boat Basin	Aug. 16-Jan. 31	Min. size 12". Daily limit 6. No more than 4 adults may be retained. Night closure and anti-snagging rule. Only single-point barbless hooks may be used.
TROUT	Year-round	Catch-and-release except up to 2 hatchery STEELHEAD may be retained.
STURGEON	Year-round	Min. size 38" fork length. Max. size 54" fork length. Daily limit 1. Release GREEN STURGEON.
TUNA and MACKEREL	Year-round	No min. size. No daily limit.
HERRING, SMELT, ANCHOVY, SARDINE, and SAND LANCE	Year-round	No min. size. Daily limit 10 lbs., all species combined. All SMELT caught must be kept and count toward the daily limit.
PACIFIC HALIBUT	May 2-quota or Sept. 28, whichever comes first	Open Sunday May 2, Sundays and Tuesdays ONLY, except CLOSED May 25. No min. size. Daily limit 1. Season may close earlier if quota is attained. See Northern Nearshore HALIBUT Fishery and HALIBUT and BOTTOMFISH closure areas below.
BOTTOMFISH	Year-round season. Daily limit is a total of 15 BOTTOMFISH (see definition page 18) regardless of species, subject to individual limits and seasons shown below. See HALIBUT and BOTTOMFISH closure areas and 30 fathom restriction below.	
LINGCOD	Mar. 13-Oct. 16, 2010 Reopens Mar. 19, 2011	Min. size 22". Daily limit 2. No retention or possession of LINGCOD seaward of a line approximating 30 fathoms March 15-June 15 (except when the primary HALIBUT season is open). See 30 fathom restriction below. No retention or possession of LINGCOD south of 46°58' N. and seaward of 30 fathoms on Fridays and Saturdays July 1-Aug. 31.
SURFPERCH	Year-round	No min. size. Daily limit 15. Except SHINER PERCH daily limit 15: not included in BOTTOMFISH limit.
ROCKFISH	Year-round	No min. size. Daily limit 10. No CANARY or YELLOWEYE may be retained. No retention or possession of rockfish seaward of a line approximating 30 fathoms March 15-June 15.
OTHER FOOD FISH	Year-round	No min. size. Daily limit 2 of each species.
ALL OTHER FISH	Year-round	CLOSED

Buoy 13 Line: A line drawn true north-south through Buoy 13 near the entrance of Grays Harbor.

Grays Harbor Control Zone: An area at the entrance to Grays Harbor bounded by a line from the lighthouse 1 mile south of the south jetty to buoy #2 to buoy #3 to the tip of the north jetty to the tip of the exposed end of the south jetty.

Westport Boat Basin: A portion of Grays Harbor lying inside the boat basin breakwater and inside lines drawn from lighted day markers 10 to 11 and 1 to 2.

Northern Nearshore HALIBUT Fishery: Open to HALIBUT fishing beginning May 2, seven days per week until the sub-quota is reached or Sept. 28 for those waters from 47°31.70' N. latitude south to 46°58.00' N. latitude and east of a line approximating 30 fathoms as defined by the following coordinates: 47°31.70'N, 124°37.03'W, 47°25.67'N, 124°34.79'W, 47°12.82'N, 124°29.12'W, 46°58.00'N, 124°24.24'W

HALIBUT and BOTTOMFISH Closure Areas

Fishing for HALIBUT and BOTTOMFISH is closed and anglers may not fish for SALMON with BOTTOMFISH aboard in these areas:

South Coast YRCA described beginning at: 46°58.00'N, 124°48.00'W, and continuing to 46°55.00'N, 124°48.00'W, then to 46°55.00'N, 124°49.00'W, then to 46°58.00'N, 124°49.00'W, then to and back to the point of origin.

Westport Offshore YRCA beginning at: 46°54.30'N, 124°53.40'W, and continuing to 46°54.30'N, 124°51.00'W, then to 46°53.30'N, 124°51.00'W, then to 46°53.30'N, 124°53.40'W

30 fathom restriction

When the 30 fathom restriction is in place, fishing for or possession of BOTTOM FISH is prohibited seaward of a line approximating 30 fathoms, except LINGCOD retention permitted on days primary HALIBUT season is open. SABLEFISH, and PACIFIC COD permitted May 1-June 15 from Queets River south to Leadbetter Pt., as described by the following coordinates:

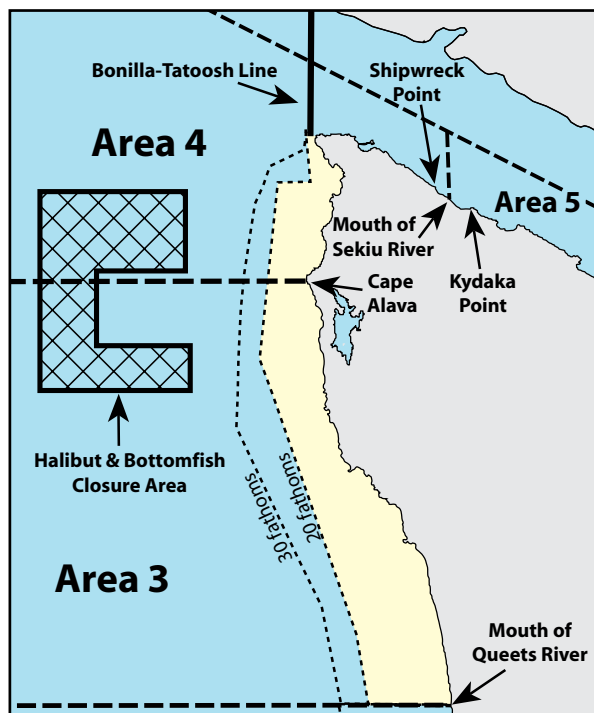
47°31.70'N, 124°37.03'W,
47°25.67'N, 124°34.79'W,
47°12.82'N, 124°29.12'W,
46°52.94'N, 124°22.58'W,
46°44.18'N, 124°18.00'W,
46°38.17'N, 124°15.88'W.

NOTE: In Areas 2-1 and 2-2, anglers may use either a freshwater, saltwater, or combination license.

Marine Area 3 - LaPush

(From the Queets River north to Cape Alava)

SPECIES	SEASON	ADDITIONAL RULES
SALMON - ENTIRE AREA	June 12-June 30	CHINOOK - min. size 24". Other SALMON species - no min. size. Release COHO and wild CHINOOK. Daily limit 2 (combined). Season may close earlier if coastwide guideline of 12,000 CHINOOK is attained.
	July 1-Sept. 18	Open Tuesdays through Saturdays ONLY. CHINOOK - min. size 24". COHO - min. size 16". Other SALMON species - no min. size. Daily limit 2 (combined). Only 1 CHINOOK may be retained. Release wild COHO. Season may close earlier if sub-quota of 1,700 hatchery COHO or 2,450 CHINOOK guideline is attained.
LaPush Late Season Area (see below for boundaries)	Sept. 25-Oct. 10	CHINOOK - min. size 24". COHO - min. size 16". Other SALMON species - no min. size. Daily limit 2 (combined). Only 1 CHINOOK may be retained. Release wild COHO. Season may close earlier if sub-quota of 50 hatchery COHO or 50 CHINOOK quota is attained.
TROUT	Year-round	Catch-and-release except up to 2 hatchery STEELHEAD may be retained.
STURGEON	Year-round	Min. size 38" fork length. Max. size 54" fork length. Daily limit 1. Release GREEN STURGEON.
TUNA and MACKEREL	Year-round	No min. size. No daily limit.
HERRING, SMELT, ANCHOVY, SARDINE, and SAND LANCE	Year-round	No min. size. Daily limit 10 lbs., all species combined. All SMELT caught must be kept and count toward the daily limit.
PACIFIC HALIBUT	May 13-quota	Open Thursdays and Saturdays ONLY through May 22. HALIBUT fishery CLOSED May 27-29. If sufficient quota remains, the fishery will re-open June 3 and 5. Additional openings may occur with sufficient quota see wdfw.wa.gov . No min. size. Daily limit 1. See HALIBUT and BOTTOMFISH closure area below.
BOTTOMFISH	Year-round season. Daily limit is a total of 15 BOTTOMFISH (see definition page 18) regardless of species, subject to individual limits and seasons shown below. No retention or possession of BOTTOMFISH seaward of line approximating 20 fathoms May 21-Sept. 30 (except when HALIBUT is open). See 20 fathom restriction below. Note HALIBUT and BOTTOMFISH Closure Area below.	
LINGCOD	Mar. 13-Oct. 16, 2010 Reopens Mar. 19, 2011	Min. size 22". Daily limit 2.
SURFPERCH	Year-round	No min. size. Daily limit 15. Except SHINER PERCH daily limit 15: not included in BOTTOMFISH limit.
ROCKFISH	Year-round	No min. size. Daily limit 10. No CANARY or YELLOWEYE may be retained.
OTHER FOOD FISH	Year-round	No min. size. Daily limit 2 of each species.
ALL OTHER FISH	Year-round	CLOSED



HALIBUT and BOTTOMFISH Closure Area ("C"-shaped YRCA)

Fishing for HALIBUT and BOTTOMFISH is closed, and anglers may not fish for SALMON with BOTTOMFISH aboard in the area described as an eastward facing "C" beginning at:

48°18'N, 125°18'W and continuing to
 48°18'N, 124°59'W, then to
 48°11'N, 124°59'W, then to
 48°11'N, 125°11'W, then to
 48°04'N, 125°11'W, then to
 48°04'N, 124°59'W, then to
 48°00'N, 124°59'W, then to
 48°00'N, 125°18'W, and
 back to the point of origin.

30 fathom restriction (HALIBUT)

When the 30 fathom restriction is in place, fishing for or possession of HALIBUT is prohibited seaward of a line approximating 30 fathoms from the Bonilla-Tatoosh line south to the Queets River, as described by the following coordinates:

48°24.79'N, 124°44.07'W,
 48°24.80'N, 124°44.74'W,
 48°23.94'N, 124°44.70'W,
 48°23.51'N, 124°45.01'W,
 48°22.59'N, 124°44.97'W,
 48°21.75'N, 124°45.26'W,
 48°21.23'N, 124°47.78'W,
 48°20.32'N, 124°49.53'W,
 48°16.72'N, 124°51.58'W,
 48°10.00'N, 124°52.58'W,
 48°05.63'N, 124°52.91'W,
 47°56.25'N, 124°52.57'W,
 47°40.28'N, 124°40.07'W,
 47°31.70'N, 124°37.03'W.

LaPush Late Season Area - Fishery restricted to the area north of 47°50'N. latitude and south of 48°00'N. latitude. Same season and rules as Marine Area 3 - ENTIRE AREA except Sept. 25-Oct. 10. See above for rules.

20 fathom restriction (BOTTOMFISH)

May 21-Sept. 30, fishing for or possession of BOTTOM FISH is prohibited seaward of a line approximating 20 fathoms from the Bonilla-Tatoosh line south to the Queets River, as described by the following coordinates:

48°23.90' N, 124°44.20' W,
 48°23.60' N, 124°44.90' W,
 48°18.60' N, 124°43.60' W,
 48°18.60' N, 124°48.20' W,
 48°10.00' N, 124°48.80' W,
 48°02.40' N, 124°49.30' W,
 47°37.60' N, 124°34.30' W,
 47°31.70' N, 124°32.40' W.

Marine Area 4 - Neah Bay

(From Cape Alava north and inside Juan de Fuca Strait to the Sekiu River)

SPECIES	SEASON	ADDITIONAL RULES
SALMON West of the Bonilla-Tatoosh Line	June 12-June 30	CHINOOK - min. size 24". Other SALMON species - no min. size. Release COHO and wild CHINOOK. Daily limit 2 (combined). Season may close earlier if coastwide guideline of 12,000 CHINOOK is attained.
	July 1-Sept. 18	Open Tuesdays through Saturdays ONLY. CHINOOK - min. size 24". COHO - min. size. 16". Other SALMON species - no min. size. Daily limit 2 (combined). Only 1 CHINOOK may be retained. Release wild COHO. Beginning Aug. 1 release CHUM.
East of the Bonilla-Tatoosh Line	June 12-June 30	CHINOOK - min. size 24". Release COHO and wild CHINOOK. Daily limit 2 (combined). Season may close earlier if coastwide quota of 12,000 CHINOOK is attained. East of a true north-south line through Sail Rock CLOSED to SALMON fishing. See Kydaka Point Closure below.
	July 1-July 31	Open Tuesdays through Saturdays ONLY. CHINOOK - min. size 24". COHO - min. size. 16". Other SALMON species - no min. size. Daily limit 2 (combined). Only 1 CHINOOK may be retained. Release wild COHO. East of a true north-south line through Sail Rock CLOSED to SALMON fishing. See Kydaka Point Closure below.
	Aug. 3-Sept. 18	Open Tuesdays through Saturdays ONLY. COHO - min. size. 16". Other SALMON species - no min. size. Daily limit 2 (combined). Release CHINOOK, wild COHO and CHUM. See Kydaka Point Closure below.
July-Sept. seasons may close earlier if quota of 6,990 hatchery COHO or 5,400 CHINOOK guideline is attained.		
TROUT	Year-round	Catch-and-release except up to 2 hatchery STEELHEAD may be retained.
STURGEON	Year-round	Min. size 38" fork length. Max. size 54" fork length. Daily limit 1. Release GREEN STURGEON.
TUNA and MACKEREL	Year-round	No min. size. No daily limit.
HERRING, SMELT, ANCHOVY, SARDINE, and SAND LANCE	Year-round	No min. size. Daily limit 10 lbs., all species combined. All SMELT caught must be kept and count toward the daily limit. For SMELT: East of the Bonilla-Tatoosh line - jig gear may be used 7 days a week. Dipnets may be used 8:00 a.m. Fridays through 8:00 a.m. Wednesdays. West of the Bonilla-Tatoosh line - dipnets and jigs may be used 7 days a week.
PACIFIC HALIBUT	May 13-quota	Open Thursdays and Saturdays ONLY through May 22. HALIBUT fishery CLOSED May 27-29. If sufficient quota remains, the fishery will re-open June 3 and 5. Additional openings may occur with sufficient quota see wdfw.wa.gov . No min. size. Daily limit 1. See 30 fathom restriction on previous page.
BOTTOMFISH	Year-round season. Daily limit is a total of 15 BOTTOMFISH (see definition page 18) regardless of species, subject to individual limits and seasons shown below. See HALIBUT and BOTTOMFISH Closure Area on previous page. East of the Bonilla-Tatoosh Line, fishing for BOTTOMFISH prohibited in waters deeper than 120'. See BOTTOMFISH Closure next page.	
LINGCOD	Apr. 16-Oct. 15, 2010 Re-opens Apr. 16, 2011	Min. size 24". Daily limit 2. No retention or possession of LINGCOD seaward of line approximating 20 fathoms May 21-Sept. 30 (except when HALIBUT is open). See 20 fathom restriction on previous page.
SURFPERCH	Year-round	No min. size. Daily limit 15. Except SHINER PERCH daily limit 15: not included in BOTTOMFISH limit.
ROCKFISH east of Bonilla-Tatoosh Line	Year-round	No min. size. Daily limit 6. Only BLUE and BLACK may be retained. See BOTTOMFISH Closure next page.
	west of Bonilla-Tatoosh Line	Year-round
CABEZON east of Bonilla-Tatoosh Line	Year-round	No min. size. Daily limit 2.
	west of Bonilla-Tatoosh Line	Year-round
WOLF-EEL	CLOSED	
OTHER FOOD FISH	Year-round	No min. size. Daily limit 2 of each species.
ALL OTHER FISH	Year-round	CLOSED

Bonilla-Tatoosh Line: A line running from the western end of Cape Flattery to Tatoosh Island Lighthouse to the buoy adjacent to Duntze Rock, then in a straight line to Bonilla Point on Vancouver Island.

Kydaka Point Closure: June 12-Sept. 18: waters south of a line from Kydaka Point westerly approximately 4 miles to Shipwreck Point CLOSED to fishing for SALMON. See map on page 110.

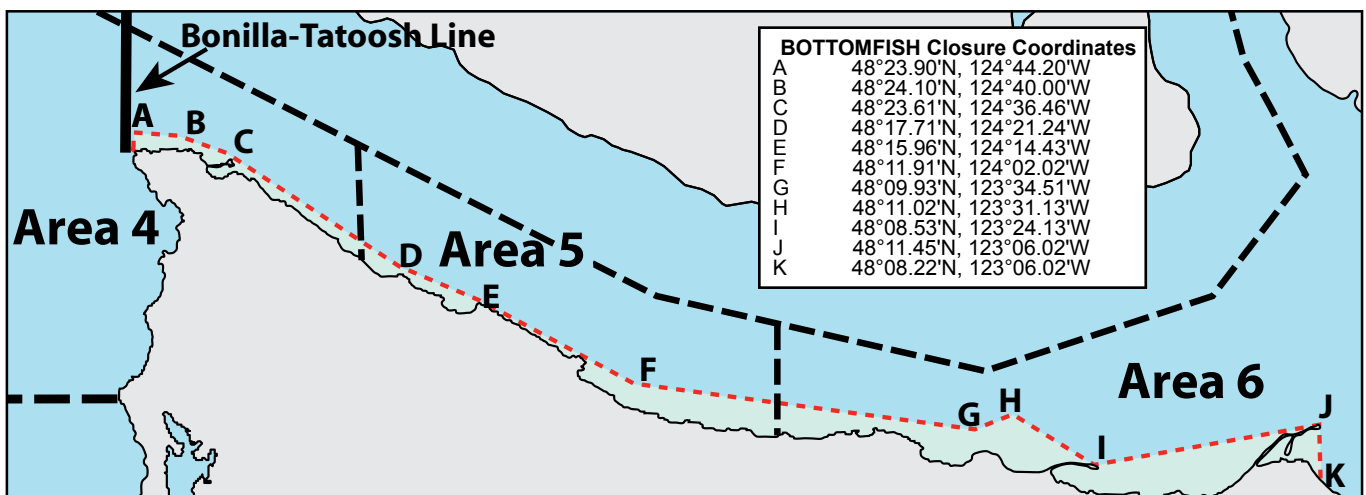
Marine Area 5 - Sekiu and Pillar Point

(From mouth of the Sekiu River east to Low Point, mouth of the Lyre River) See map on following page.

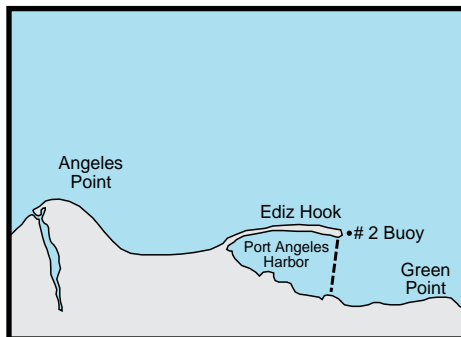
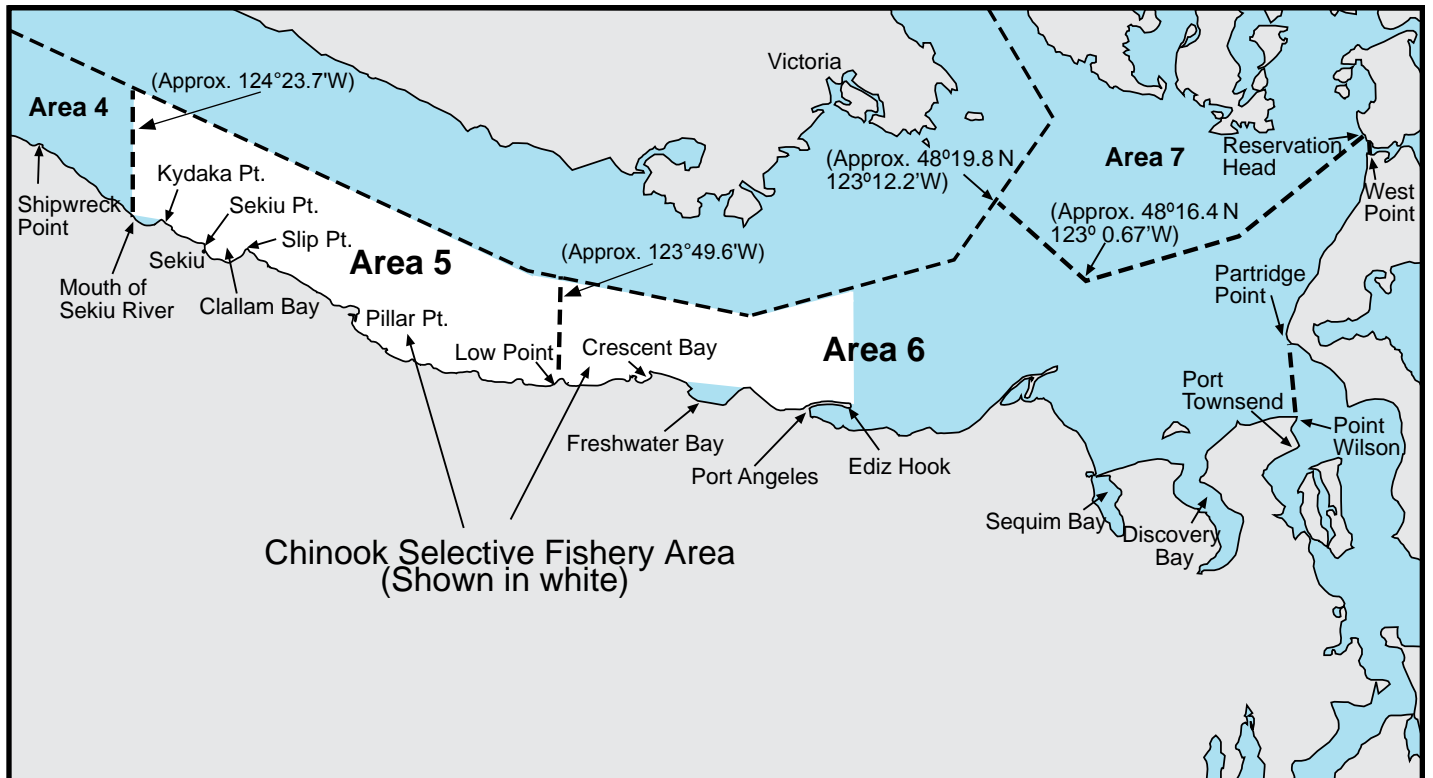
SPECIES	SEASON	ADDITIONAL RULES
SALMON - ENTIRE AREA	July 1-Aug. 15	CHINOOK - min. size 22". Other SALMON species - no min. size. Daily limit 2 (combined). Release wild CHINOOK, wild COHO, and CHUM. See Kydaka Point Closure below.
	Aug. 16-Sept. 15	No min. size. Daily limit 2 (combined). Release CHINOOK, wild COHO, and CHUM. See Kydaka Point Closure below.
	Sept. 16-Sept. 30	No min. size. Daily limit 2 (combined). Release CHINOOK and CHUM. See Kydaka Point Closure below.
	Nov. 1-Nov. 30	CHINOOK - min. size 22". Other SALMON species - no min. size. Daily limit 2 (combined). Only 1 CHINOOK may be retained.
	Feb. 16-Apr. 10	CHINOOK - min. size 22". Other SALMON species - no min. size. Daily limit 1.
TROUT	Year-round	Catch-and-release except up to 2 hatchery STEELHEAD may be retained.
STURGEON	Year-round	Min. size 38" fork length. Max. size 54" fork length. Daily limit 1. Release GREEN STURGEON.
TUNA and MACKEREL	Year-round	No min. size. No daily limit.
HERRING, SMELT, ANCHOVY, SARDINE, and SAND LANCE	Year-round	No min. size. Daily limit 10 lbs., all species combined. All SMELT caught must be kept and count toward the daily limit. For SMELT: Jig gear may be used 7 days a week. Dipnets may be used 8:00 a.m. Fridays through 8:00 a.m. Wednesdays.
PACIFIC HALIBUT	May 28-June 19	May 28-May 30: Friday through Sunday ONLY. June 3-June 19: Open Thursdays through Saturdays ONLY. No min. size. Daily limit 1.
BOTTOMFISH	Daily limit is a total of 15 BOTTOMFISH (see definition page 18) regardless of species, subject to individual limits and seasons shown below. Fishing for BOTTOMFISH prohibited in waters deeper than 120'. See BOTTOMFISH Closure below.	
LINGCOD	May 1-June 15 May 21-June 15	Hook and line season only. Min. size 26". Max. size 36". Daily limit 1. Spearfishing season only. Min. size 26". Max. size 36". Daily limit 1.
SURFPERCH	Year-round	No min. size. Daily limit 10. Except SHINER PERCH daily limit 15: not included in BOTTOMFISH limit.
ROCKFISH West of Slip Point	May 1-Sept. 30	No min. size. Daily limit is the first 3 BLACK or BLUE rockfish caught. May 1-June 15 spearfishing allowed.
East of Slip Point	May 1-Sept. 30	No min. size. Daily limit is the first BLACK or BLUE rockfish caught. May 1-June 15 spearfishing allowed.
PACIFIC COD, POLLOCK, HAKE	Year-round	No min. size. Daily limit 2 of each species.
CABEZON	May 1-Nov. 30	No min. size. Daily limit 2.
WOLF-EEL, SIXGILL SHARK	CLOSED	SIXGILL SHARK may not be removed from the water.
OTHER FOOD FISH	Year-round	No min. size. Daily limit 2 of each species.
ALL OTHER FISH	Year-round	CLOSED

Kydaka Point Closure: July 1-Sept. 30: waters south of a line from Kydaka Point westerly approximately 4 miles to Shipwreck Point CLOSED to fishing for SALMON. See map on next page.

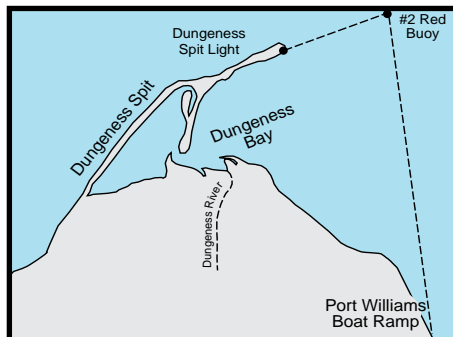
BOTTOMFISH Closure: Fishing for BOTTOMFISH prohibited in waters deeper than 120' as defined by the coordinates listed below shown by the dashed red line.



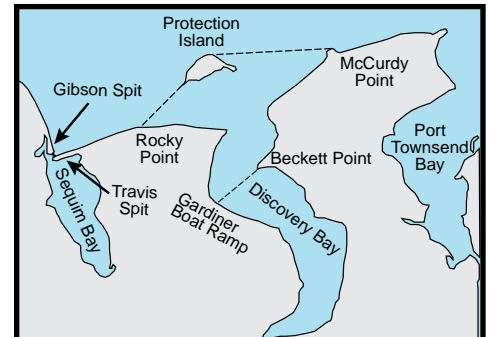
Marine Area 5 and 6 Map



Port Angeles Harbor Closure: Waters of Port Angeles Harbor west of a line from the tip of Ediz Hook to the ITT Rayonier Dock.

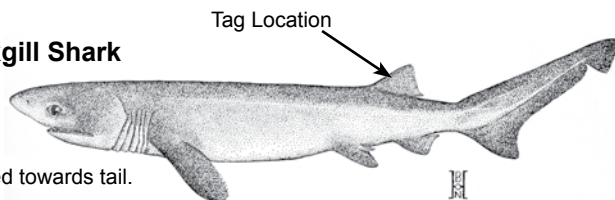


Dungeness Bay Fishery and Closure: Waters of Dungeness Bay inside of a line from Dungeness Spit Lighthouse to the #2 Red Buoy, then to the Port Williams boat ramp. Oct. 1-Oct. 31: open to fishing for COHO SALMON. See rules next page. CLOSED to fishing for SALMON at all other times.



Discovery Bay Shrimp District: Waters south of a line from McCurdy Point on the Quimper Peninsula to the northern tip of Protection Island then from the western end of Protection Island to Rocky Point on the Miller Peninsula and all waters of Discovery Bay.

Sixgill Shark



Size: up to 15'
Color: dark brown or gray.
Look for: one fin on back situated towards tail.
 Six gill slits on each side of head.

It is unlawful to remove a SIXGILL shark from the water

The department is tagging sixgill sharks to learn more about their behavior and abundance. The tags are colored disks about the size of a quarter.

If you see or catch a tagged SIXGILL shark in Washington waters, do not remove the tag, but please report the color and tag number by calling (360) 902-2700. This phone is available 24 hours per day.

Marine Area 6 - East Juan de Fuca Strait

(From Low Point east to the Partridge Point – Point Wilson line north to the line from Trial Island (near Victoria B.C.) – Vessel Traffic Separation Buoy “R” – Smith Island to the Lawson Reef Buoy to Northwest Island to the Initiative 77 marker on Fidalgo Island and west of the line from Reservation Head to West Point)

SPECIES	SEASON	ADDITIONAL RULES
SALMON (CHINOOK Selective Fishery) West of a true north/south line through the #2 Buoy immediately east of Ediz Hook	July 1-Aug. 15	CHINOOK - min. size 22". Other SALMON species - no min. size. Daily limit 2 (combined). Release wild CHINOOK, wild COHO, and CHUM. See closures below.
(CHINOOK Release Area) East of a true north/south line through the #2 Buoy immediately east of Ediz Hook	July 1-Aug. 15	No min. size. Daily limit 2 (combined). Release CHINOOK, wild COHO, and CHUM. See closures below.
ENTIRE AREA	Aug. 16-Sept. 30	No min. size. Daily limit 2 (combined). Release CHINOOK, wild COHO, and CHUM. See closures below.
	Oct. 1-Oct. 31	CHINOOK - min. size 22". Other SALMON species - no min. size. Daily limit 2 (combined). Only 1 CHINOOK may be retained. See closures below. See Dungeness Bay Fishery and Closure below.
	Feb. 16-Apr. 10	CHINOOK - min. size 22". Other SALMON species - no min. size. Daily limit 1. See Dungeness Bay Fishery and Closure below.
Dungeness Bay Fishery (see below for boundaries)	Oct. 1-Oct. 31	No min. size. Daily limit 2 COHO only.
TROUT	Year-round	Catch-and-release except up to 2 hatchery STEELHEAD may be retained. See Freshwater Bay Closure below.
STURGEON	Year-round	Min. size 38" fork length. Max. size 54" fork length. Daily limit 1. Release GREEN STURGEON.
MACKEREL	Year-round	No min. size. No daily limit.
HERRING, SMELT, ANCHOVY, SARDINE, and SAND LANCE	Year-round	No min. size. Daily limit 10 lbs., all species combined. All SMELT caught must be kept and count toward the daily limit. HERRING - CLOSED Jan. 16-Apr. 15 south of a line from Ediz Hook to Partridge Point. For SMELT: Jig gear may be used 7 days a week. Dipnets may be used 8:00 a.m. Fridays through 8:00 a.m. Wednesdays.
PACIFIC HALIBUT	May 1-May 22 May 28-May 30	May 1-May 22: Open Thursdays through Saturdays ONLY. May 28-May 30: Friday through Sunday ONLY. No min. size. Daily limit 1. *Check the WDFW website at wdfw.wa.gov or call (360) 902-2700 in March 2011 for updates on the 2011 opening for PACIFIC HALIBUT.
BOTTOMFISH	Year-round season. Daily limit is a total of 15 BOTTOMFISH (see definition page 18) regardless of species, subject to individual limits and seasons shown below. See Freshwater Bay Closure below. Fishing for BOTTOMFISH prohibited in waters deeper than 120'.	
LINGCOD	May 1-June 15 May 21-June 15	Hook and line season only. Min. size 26". Max. size 36". Daily limit 1. Spearfishing season only. Min. size 26". Max. size 36". Daily limit 1.
SURFPERCH	Year-round	No min. size. Daily limit 10. Except SHINER PERCH daily limit 15: not included in BOTTOMFISH limit.
ROCKFISH	CLOSED	
PACIFIC COD, POLLOCK, HAKE	Year-round	No min. size. Daily limit 2 of each species.
CABEZON	May 1-Nov. 30	No min. size. Daily limit 2.
WOLF-EEL, SIXGILL SHARK	CLOSED	SIXGILL SHARK may not be removed from the water.
OTHER FOOD FISH	Year-round	No min. size. Daily limit 2 of each species.
ALL OTHER FISH	Year-round	CLOSED

CLOSURES:

Dungeness Bay Fishery and Closure: Waters of Dungeness Bay inside of a line from Dungeness Spit Lighthouse to the #2 Red Buoy, then to the Port Williams boat ramp. Oct. 1-Oct. 31: OPEN to fishing for COHO SALMON. CLOSED to fishing for SALMON at all other times. See Dungeness Bay Fishery above for rules.

Freshwater Bay Closure: July 1-Oct. 31: waters of Freshwater Bay south of a line from Angeles Point westerly approximately 4 miles to Observatory Point (Bachelor Rock) closed to fishing for ALL finfish.

Port Angeles Harbor Closure: July 1-Oct. 31: waters of Port Angeles Harbor west of a line from the tip of Ediz Hook to the ITT Rayonier Dock closed to fishing for SALMON.

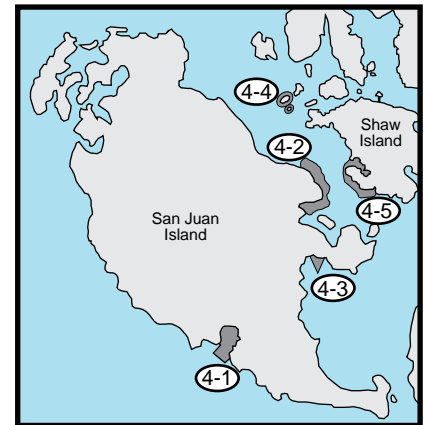
Sequim Bay Closure: Oct. 1-Oct. 31: waters of Sequim Bay south of a line from the southern end of Gibson Spit to the west end of Travis Spit CLOSED to fishing for SALMON.

Discovery Bay Closure: Oct. 1-Oct. 31: waters of Discovery Bay south of a line from the Gardiner boat ramp to Beckett Point CLOSED to fishing for SALMON.

Marine Area 7 Map



- ① **Bellingham Bay Closure and Fishery:** Waters of Bellingham and Padilla bays south and east of a line from Gooseberry Pt. to Sandy Pt. to Pt. Migley, from Carter Pt. to north tip of Vendovi Island to Clark Pt., and true west from Yellow Bluff (southwest corner of Guemes Island) to Yellow Bluff Reef Range Marker to Washington State Dept. of Transportation ferry terminal dock east of Shannon Pt. and north of the railroad bridges at Swinomish Slough - same rules as Marine Area 7 - ENTIRE AREA, except Apr. 1-Apr. 30 and July 1-Aug. 15: CLOSED to fishing for SALMON and Aug. 16-Oct. 31: OPEN to fishing for SALMON. (see rules for Bellingham Bay Fishery on next page).
- ② **Samish Bay Closure:** Waters of Samish Bay lying south of a line running true east from Fish Point - same rules as Marine Area 7 - ENTIRE AREA, except Apr. 1-Apr. 30 and July 1-Oct. 15: CLOSED to fishing for SALMON and Oct. 16-Oct. 31: same rules as Bellingham Bay Fishery.
- ③ **Lummi Indian Reservation:** Some Indian reservations or portions thereof may be closed to non-Indian fishing and/or access. Be sure to contact the tribal office at (360) 384-1489 for necessary permits and rules.



San Juan Islands Marine Preserve
Closed to all shellfish and bottomfish activities (except crabbing in Parks Bay on Shaw Island).

- ④ **San Juan Islands Marine Preserve (False Bay, Friday Harbor, Argyle Lagoon, Yellow and Low Islands, and Shaw Island):** Closed to all SHELLFISH and BOTTOMFISH activity (except crabbing in Parks Bay on Shaw Island). Yellow and Low Islands also closed to SALMON fishing.
- ④-1 **False Bay:** The tidelands and bedlands of False Bay on San Juan Island, including all University of Washington (UW)-owned tidelands beginning at a marker 400' east of the east entrance of False Bay and extending to the entrance of False Bay, all UW-owned tidelands and bedlands within a line beginning at the UW marker on the shore at the east entrance of False Bay, projected 500 yards offshore, then northwest to a point 500 yards offshore along a line projected from a UW marker on the shore at the west side of a small peninsula at the west entrance of False Bay, then to shore along the line to the marker, and all UW-owned tidelands west of the marker to a UW marker 600' west of the small peninsula.
- ④-2 **Friday Harbor:** Those tidelands and bedlands adjacent to San Juan Island within a line beginning on the shore 500 yards west of Point Caution, then 500 yards offshore, then south and east following the shoreline to the intersection with a line projected from a UW marker located 100' north of the north entrance of the floating breakwater of the Port of Friday Harbor and projected toward Reid Rock Buoy, then along the line to shore on San Juan Island.
- ④-3 **Argyle Lagoon:** Those UW-owned tidelands and all bedlands enclosed by the inner spit of Argyle Lagoon on San Juan Island.
- ④-4 **Yellow and Low Islands Preserve:** All tidelands and bedlands within 300 yards of Yellow Island and 300 yards of Low Island. Also closed to SALMON fishing.
- ④-5 **Shaw Island:** Those tidelands and bedlands within a line beginning at a UW marker on the shore at Hicks Bay 122°58'15"W longitude, then due south 500 yards, then north and west at a distance of 500 yards from shore to the intersection with a line projected 261° true from a UW marker on the shore of Parks Bay, which passes just south of the unnamed island at the north end of Parks Bay, then along the line to the shore of Shaw Island, including all tidelands and bedlands of Parks Bay south of the line.

Marine Area 7 - San Juan Islands

(All marine waters north of the Trial Island line described under Area 6 to the United States-Canada boundary)

SPECIES	SEASON	ADDITIONAL RULES
SALMON - ENTIRE AREA	July 1-July 31	CHINOOK - min. size 22". Other SALMON species - no min. size. Daily limit 2 (combined). Only 1 CHINOOK may be retained. See Southern Rosario Strait/Eastern Strait of Juan de Fuca Closure below. See Bellingham Bay Closure and Fishery, Samish Bay Closure, and Yellow and Low Islands Preserve on previous page.
	Aug. 1-Sept. 30	CHINOOK - min. size 22". Other SALMON species - no min. size. Daily limit 2 (combined). Only 1 CHINOOK may be retained. Release wild COHO, and CHUM. See Southern Rosario Strait/ Eastern Strait of Juan de Fuca Closure below. See Bellingham Bay Closure and Fishery, Samish Bay Closure, and Yellow and Low Islands Preserve on previous page.
	Oct. 1-Oct. 31	CHINOOK - min. size 22". Other SALMON species - no min. size. Daily limit 2 (combined). Only 1 CHINOOK may be retained. See Bellingham Bay Closure and Fishery, Samish Bay Closure, and Yellow and Low Islands Preserve on previous page.
	Dec. 1-Apr. 30	CHINOOK - min. size 22". Other SALMON species - no min. size. Daily limit 2 (combined). Release wild CHINOOK. See Bellingham Bay Closure and Fishery, and Yellow and Low Islands Preserve on previous page.
Bellingham Bay Fishery (see on previous page for boundaries)	Aug. 16-Oct. 31	CHINOOK - min. size 22". Other SALMON species - no min. size. Daily limit 4 (combined). Up to 2 CHINOOK may be retained. See Samish Bay Closure on previous page.
TROUT	Year-round	Catch-and-release except up to 2 hatchery STEELHEAD may be retained.
STURGEON	Year-round	Min. size 38" fork length. Max. size 54" fork length. Daily limit 1. Release GREEN STURGEON.
MACKEREL	Year-round	No min. size. No daily limit.
HERRING, SMELT, ANCHOVY, SARDINE, and SAND LANCE	Year-round	No min. size. Daily limit 10 lbs., all species combined. All SMELT caught must be kept and count toward the daily limit. HERRING - CLOSED year-round north of a line from Sandy Point to Patos Island to the Canadian boundary. For SMELT: Jig gear may be used 7 days a week. Dipnets may be used 8:00 a.m. Fridays through 8:00 a.m. Wednesdays.
PACIFIC HALIBUT	May 1-May 22	May 1-May 22: Open Thursdays through Saturdays ONLY. May 28-May 30: Friday through Sunday ONLY. No min. size. Daily limit 1.
	May 28-May 30	
	*Check the WDFW website at wdfw.wa.gov or call (360) 902-2700 in March 2011 for updates on the 2011 opening for PACIFIC HALIBUT.	
BOTTOMFISH	Year-round season. Daily limit is a total of 15 BOTTOMFISH (see definition page 18) regardless of species, subject to individual limits and seasons shown below. See closures on previous page. Fishing for BOTTOMFISH prohibited in waters deeper than 120'.	
LINGCOD	May 1-June 15 May 21-June 15	Hook and line season only. Min. size 26". Max. size 36". Daily limit 1. Spearfishing season only. Min. size 26". Max. size 36". Daily limit 1.
SURFPERCH	Year-round	No min. size. Daily limit 10. Except SHINER PERCH daily limit 15: not included in BOTTOMFISH limit.
ROCKFISH	CLOSED	
PACIFIC COD, POLLOCK, HAKE	Year-round	No min. size. Daily limit 2 of each species.
CABEZON	May 1-Nov. 30	No min. size. Daily limit 2.
WOLF-EEL, SIXGILL SHARK	CLOSED	SIXGILL SHARK may not be removed from the water.
OTHER FOOD FISH	Year-round	No min. size. Daily limit 2 of each species.
ALL OTHER FISH	Year-round	CLOSED

- ⑤ **Southern Rosario Strait/Eastern Strait of Juan de Fuca Closure:** Waters of Area 7 in Rosario Strait and the eastern portion of the Strait of Juan de Fuca southerly of a line running true south from the westernmost point on Fidalgo Head to Burrows Island, then westerly and southerly along the shore of Burrows Island to the Burrows Island Lighthouse, then westerly to Bird Rocks, then westerly from Bird Rocks to the southernmost point on Decatur Island, then southerly across Lopez Pass to Lopez Island and following the shore of Lopez Island southerly and westerly to Iceberg Point, then from Iceberg Point to Cattle Point, then south southwest to the Salmon Bank Buoy, and then true south from the Salmon Bank Buoy to the Area 7 boundary - July 1-Sept. 30: CLOSED to fishing for SALMON. Oct. 1-June 30: same rules as Marine Area 7 - ENTIRE AREA.

Be Whale Wise

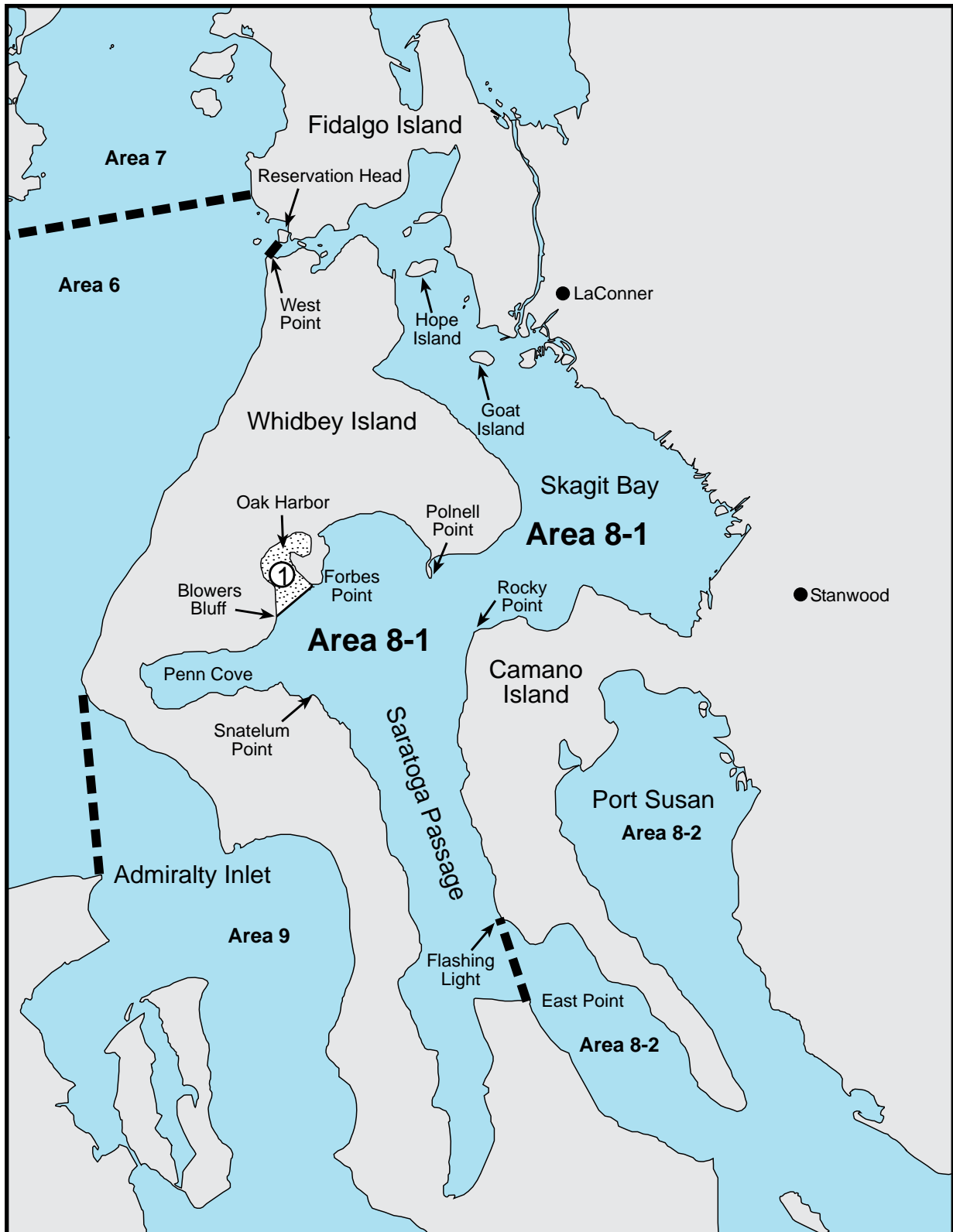


Recreational anglers and boaters are not exempt from laws protecting killer whales and other marine mammals.

Know the laws.

Learn more at www.nwr.noaa.gov/marine-mammals or <http://wdfw.wa.gov/recreation/viewing/orca/>

Marine Area 8-1 Map



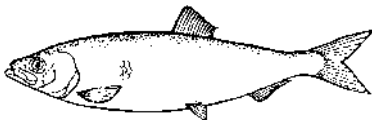
① **Oak Harbor Fishery:** Waters of Oak Harbor west of a line from Forbes Point to Blowers Bluff. Same rules as Marine Area 8-1, ENTIRE AREA, except Oct. 1-Oct. 31. See Oak Harbor Fishery on next page for rules from Oct. 1-Oct. 31.

Marine Area 8-1 - Deception Pass, Hope Island, and Skagit Bay

(From West Point to Reservation Head eastward through Deception Pass, including all waters of Swinomish Slough and Skagit Bay, and the portion of Saratoga Passage north and west of a line from East Point Light to light on Camano Island (Saratoga Pass light #4 Fl Red 4 Sec))

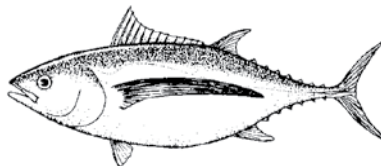
SPECIES	SEASON	ADDITIONAL RULES
SALMON - ENTIRE AREA	Aug. 1-Sept. 30	No min. size. Daily limit 2 (combined). Release CHINOOK.
	Nov. 1-Apr. 30	CHINOOK - min. size 22". Other SALMON species - no min. size. Daily limit 2 (combined). Release wild CHINOOK.
Oak Harbor Fishery (see ① on previous page for boundaries)	Oct. 1-Oct. 31	No min. size. Daily limit 2 COHO only.
TROUT	Year-round	Catch-and-release except up to 2 hatchery STEELHEAD may be retained.
STURGEON	Year-round	Min. size 38" fork length. Max. size 54" fork length. Daily limit 1. Release GREEN STURGEON.
MACKEREL	Year-round	No min. size. No daily limit.
HERRING, SMELT, ANCHOVY, SARDINE, and SAND LANCE	Year-round	No min. size. Daily limit 10 lbs., all species combined. All SMELT caught must be kept and count toward the daily limit. For SMELT: Jig gear may be used 7 days a week. Dipnets may be used 8:00 a.m. Fridays through 8:00 a.m. Wednesdays.
PACIFIC HALIBUT	May 1-May 22 May 28-May 30	May 1-May 22: Open Thursdays through Saturdays ONLY. May 28-May 30: Friday through Sunday ONLY. No min. size. Daily limit 1.
	*Check the WDFW website at wdfw.wa.gov or call (360) 902-2700 in March 2011 for updates on the 2011 opening for PACIFIC HALIBUT.	
BOTTOMFISH	Year-round season. Daily limit is a total of 15 BOTTOMFISH (see definition page 18) regardless of species, subject to individual limits and seasons shown below. Fishing for BOTTOMFISH prohibited in waters deeper than 120'.	
LINGCOD	May 1-June 15 May 21-June 15	Hook and line season only. Min. size 26". Max. size 36". Daily limit 1. Spearfishing season only. Min. size 26". Max. size 36". Daily limit 1.
SURFPERCH	Year-round	No min. size. Daily limit 10. Except SHINER PERCH daily limit 15: not included in BOTTOMFISH limit.
ROCKFISH	CLOSED	
PACIFIC COD, POLLOCK, HAKE, WOLF-EEL, SIXGILL SHARK	CLOSED	SIXGILL SHARK may not be removed from the water.
CABEZON	May 1-Nov. 30	No min. size. Daily limit 2.
OTHER FOOD FISH	Year-round	No min. size. Daily limit 2 of each species.
ALL OTHER FISH	Year-round	CLOSED

Pacific Herring



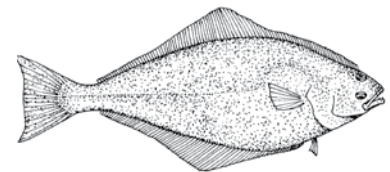
Size: up to 10"
Color: silver with blue-green tint above.
Look for: deeply forked tail and lack of adipose fin.

Albacore



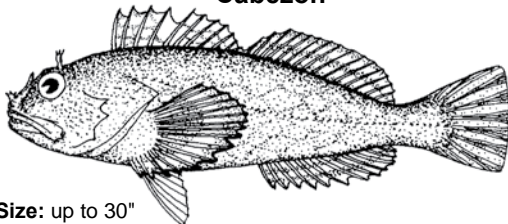
Size: up to 50"
Color: steel-blue on back; silver below.
Look for: long sabre-like pectoral fin.

Halibut



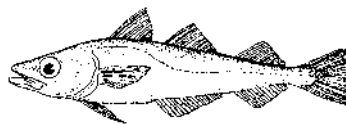
Size: up to 6'
Color: white on one side; brown-gray on the other.
Look for: large mouth and slightly forked tail.

Cabezon



Size: up to 30"
Color: olive green to brown gray with lighter mottling.
Look for: flaplike cirrus on head; small teeth.

Walleye Pollock



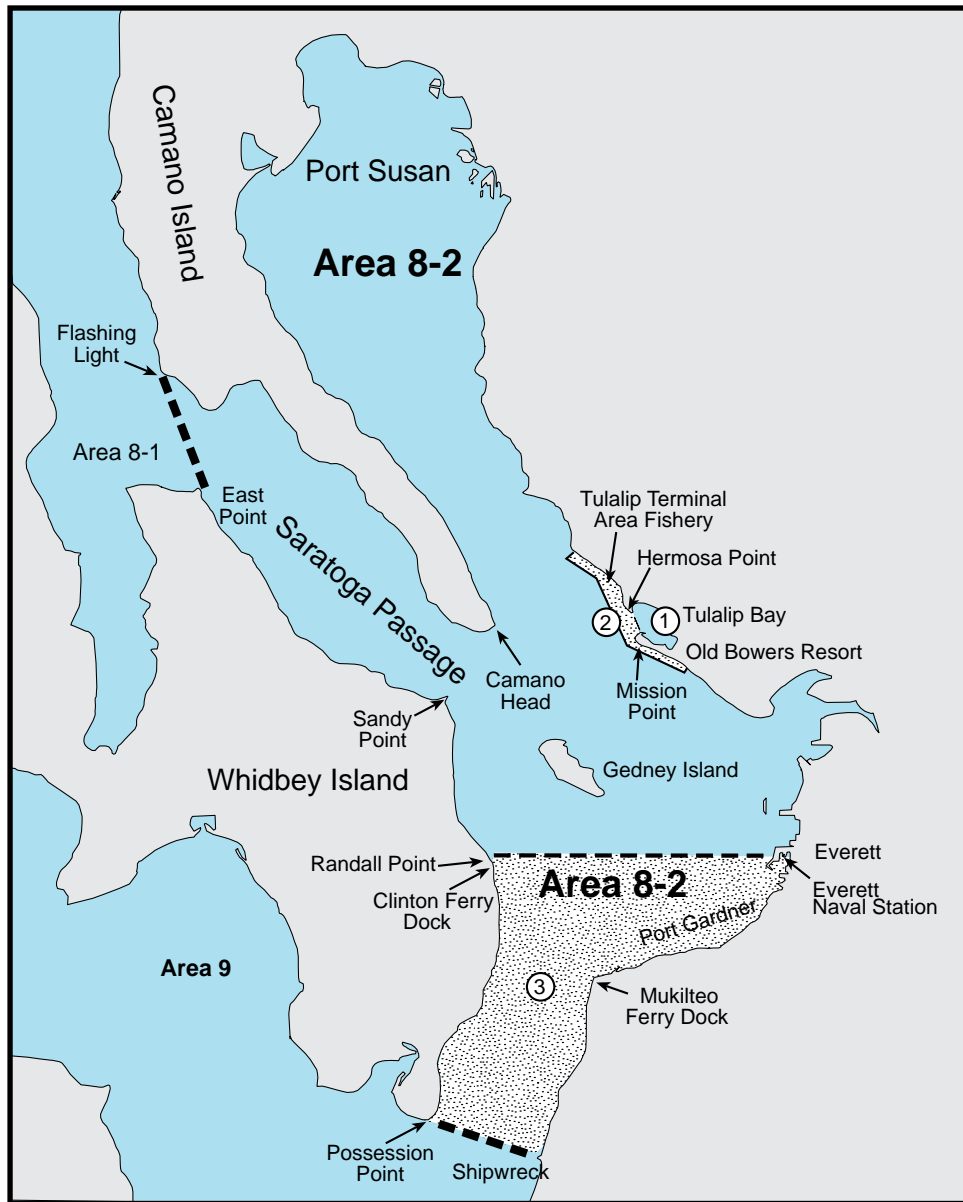
Size: up to 20"
Color: brown with mottling.
Look for: whiskers absent; 3 fins on back.

Surf Smelt



Size: up to 8"
Color: silver with a stripe along the side.
Look for: small adipose fin and stripe on the side.

Marine Area 8-2 Map



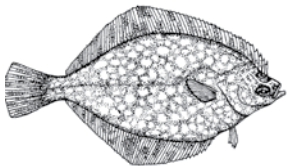
- ① **Tulip Bay Closure:** Closed to all fishing east of a line from Mission Point to Hermosa Point.
- ② **Tulip Terminal Area Fishery:** Waters adjacent to Tulip Bay west of a line from Mission Point to Hermosa Point, and within 2,000' from shore between the pilings at Old Bower's Resort (on the south) to the fishing boundary marker located approximately 1.4 miles northwest of Hermosa Point (on the north). Same rules as Marine Area 8-2 - ENTIRE AREA, except June 4-Sept. 26. See Tulip Terminal Area Fishery on next page for rules from June 4-Sept. 26.
- ③ **South Marine Area 8-2 Fishery:** Waters of Marine Area 8-2 south of the line true east from Randall Point, 47°59'N (approximately 1,000 yards north of the Clinton Ferry Dock to the south end of the Everett Naval Station dock). Same rules as Marine Area 8-2, ENTIRE AREA, except Oct. 1-Oct. 31. See South Marine Area 8-2 Fishery on next page for rules from Oct. 1-Oct. 31.

Marine Area 8-2 - Port Susan and Port Gardner

(East of East Point Light-Camano Island Light line (described in Area 8-1) and north of the Possession Point-Shipwreck line)

SPECIES	SEASON	ADDITIONAL RULES
SALMON - ENTIRE AREA	Aug. 1-Sept. 30	No min. size. Daily limit 2 (combined). Release CHINOOK. See Tulalip Terminal Area Fishery and Tulalip Bay Closure on previous page.
	Nov. 1-Apr. 30	CHINOOK - min. size 22". Other SALMON species - no min. size. Daily limit 2 (combined). Release wild CHINOOK. See Tulalip Bay Closure on previous page
Tulalip Terminal Area Fishery (see 2 on previous page for boundaries)	June 4-June 18 June 20-Sept. 6	Open Fridays through Noon Mondays ONLY. CLOSED JUNE 19. CHINOOK - min. size 22". Other SALMON species - no min. size. Daily limit 2 (combined). See Tulalip Bay Closure on previous page.
	Sept. 11-Sept. 26	Open Saturdays and Sundays ONLY. CHINOOK - min. size 22". Other SALMON species - no min. size. Daily limit 2 (combined). See Tulalip Bay Closure on previous page.
South Marine Area 8-2 Fishery (see 3 on previous page for boundaries)	Oct. 1-Oct. 31	No min. size. Daily limit 2 (combined). Release CHINOOK.
TROUT	Year-round	Catch-and-release except up to 2 hatchery STEELHEAD may be retained.
STURGEON	Year-round	Min. size 38" fork length. Max. size 54" fork length. Daily limit 1. Release GREEN STURGEON.
MACKEREL	Year-round	No min. size. No daily limit.
HERRING, SMELT, ANCHOVY, SARDINE, and SAND LANCE	Year-round	No min. size. Daily limit 10 lbs., all species combined. All SMELT caught must be kept and count toward the daily limit. For SMELT: Jig gear may be used 7 days a week. Dipnets may be used 8:00 a.m. Fridays through 8:00 a.m. Wednesdays.
PACIFIC HALIBUT	May 1-May 22 May 28-May 30	May 1-May 22: Open Thursdays through Saturdays ONLY. May 28-May 30: Friday through Sunday ONLY. No min. size. Daily limit 1.
	*Check the WDFW website at wdfw.wa.gov or call (360) 902-2700 in March 2011 for updates on the 2011 opening for PACIFIC HALIBUT.	
BOTTOMFISH	Year-round season. Daily limit is a total of 15 BOTTOMFISH (see definition page 18) regardless of species, subject to individual limits and seasons shown below. See Tulalip Bay closure on previous page. Fishing for BOTTOMFISH prohibited in waters deeper than 120'.	
LINGCOD	May 1-June 15 May 21-June 15	Hook and line season only. Min. size 26". Max. size 36". Daily limit 1. Spearfishing season only. Min. size 26". Max. size 36". Daily limit 1.
SURFPERCH	Year-round	No min. size. Daily limit 10. Except SHINER PERCH daily limit 15: not included in BOTTOMFISH limit.
ROCKFISH	CLOSED	
PACIFIC COD, POLLOCK, HAKE, WOLF-EEL, SIXGILL SHARK	CLOSED	SIXGILL SHARK may not be removed from the water.
CABEZON	May 1-Nov. 30	No min. size. Daily limit 2.
OTHER FOOD FISH	Year-round	No min. size. Daily limit 2 of each species.
ALL OTHER FISH	Year-round	CLOSED

Rock Sole



Size: up to 23"
Color: white on one side; other side varies in color.
Look for: lateral line arches above the pectoral fin.

Sanddab



Size: up to 16"
Color: one side is off-white; other side is brown with mottling.
Look for: left-eyed fish.

Striped Perch



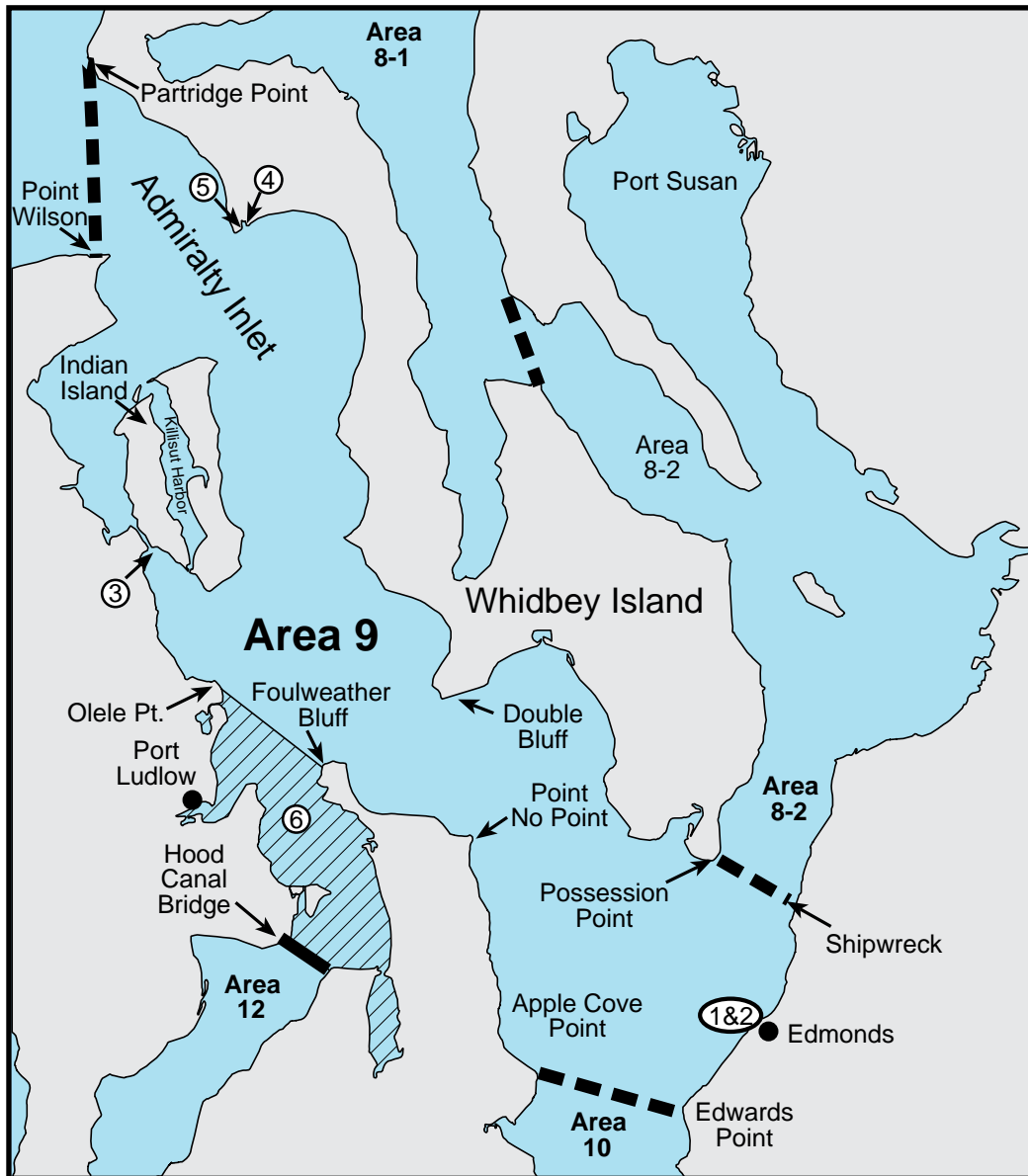
Size: up to 15"
Color: blue stripes on back.
Look for: bright color pattern.

Pile Perch



Size: up to 17"
Color: dusky to silvery gray.
Look for: deeply forked tail and dark spot on gill cover.

Marine Area 9 Map



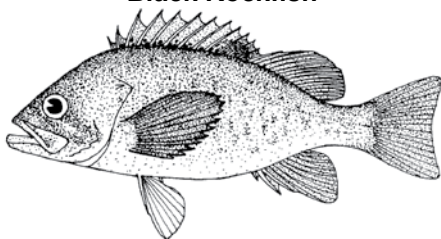
- ① **Edmonds Public Fishing Pier:** Waters inside a line from the boundary marker on the north breakwater to the southernmost marker buoy; then to the northernmost marker buoy; then to the north end of the city of Edmonds public beach, CLOSED to fishing for food fish and to the harvest of SHELLFISH except when fishing from the pier.
- ② **Brackett's Landing Shoreline Sanctuary:** Bedlands and tidelands owned by the city of Edmonds at Brackett's Landing Shoreline Sanctuary and the water column above them, including all of the area known as Edmonds Underwater Park, CLOSED to all harvest.
- ③ **Port Townsend Ship Canal/Portage Canal:** Tidelands on the eastern shore of the canal between Port Townsend Bay and Oak Bay.
- ④ **Keystone Conservation Area:** All waters, bedlands, and tidelands from Extreme High Water (EHW) out to 600' offshore of EHW that are located between the jetty at Keystone Harbor and the eastern side of the old military wharf (located east of the jetty), CLOSED to all harvest.
- ⑤ **Admiralty Head Marine Preserve:** All waters and bedlands below the Extreme Low Water starting at the extreme low tide line at 48°9.46'N, 122°40.88'W at the sign (in Fort Casey State Park), extending 400 yards offshore and northward parallel to the beach for 0.6 nautical miles. CLOSED to all harvest except sea urchins and sea cucumbers.
- ⑥ **Hood Canal Closure:** Waters of Area 9 south of a line from Foulweather Bluff to Olele Point, July 16-Aug. 31: CLOSED to fishing for SALMON except lawful to fish from shore between the Hood Canal Bridge and the northern boundary of Salsbury Point Park; daily limit 2 COHO only.

Marine Area 9 - Admiralty Inlet

(All waters inside and south of the Partridge Point – Point Wilson line, south and west of a line from Possession Point 110° true to shipwreck, north of the Hood Canal Bridge, and north of the Apple Cove Point-Edwards Point line.)

SPECIES	SEASON	ADDITIONAL RULES
SALMON - ENTIRE AREA	July 16-Aug. 31	CHINOOK - min. size 22". Other SALMON species - no min. size. Daily limit 2 (combined). Release wild CHINOOK and CHUM. Closed south of a line from Foulweather Bluff to Olele Point, except lawful to fish from shore between the Hood Canal Bridge and the northern boundary of Salisbury Point Park; daily limit 2 COHO only.
	Sept. 1-Sept. 30	No min. size. Daily limit 2 (combined). Release CHINOOK and CHUM.
	Oct. 1-Oct. 31	No min. size. Daily limit 2 (combined). Release CHINOOK.
	Nov. 1-Nov. 30	CHINOOK - min. size 22". Other SALMON species - no min. size. Daily limit 2 (combined). Release wild CHINOOK.
	Jan. 16-Apr. 15	CHINOOK - min. size 22". Other SALMON species - no min. size. Daily limit 2 (combined). Release wild CHINOOK.
Edmonds Public Fishing Pier	Year-round	CHINOOK - min. size 22". Other SALMON species - no min. size. Daily limit 2 (combined). Only 1 CHINOOK may be retained. Aug. 1-Sept. 30: release CHUM.
TROUT	Year-round	Catch-and-release except up to 2 hatchery STEELHEAD may be retained.
STURGEON	Year-round	Min. size 38" fork length. Max. size 54" fork length. Daily limit 1. Release GREEN STURGEON.
MACKEREL	Year-round	No min. size. No daily limit.
HERRING, SMELT, ANCHOVY, SARDINE, and SAND LANCE	Year-round	No min. size. Daily limit 10 lbs., all species combined. All SMELT caught must be kept and count toward the daily limit. For SMELT: Jig gear may be used 7 days a week. Dipnets may be used 8:00 a.m. Fridays through 8:00 a.m. Wednesdays.
PACIFIC HALIBUT	May 1-May 22	May 1-May 22: Open Thursdays through Saturdays ONLY. May 28-May 30: Friday through Sunday ONLY. No min. size. Daily limit 1.
	May 28-May 30	
	*Check the WDFW website at wdfw.wa.gov or call (360) 902-2700 in March 2011 for updates on the 2011 opening for PACIFIC HALIBUT.	
BOTTOMFISH	Year-round season. Daily limit is a total of 15 BOTTOMFISH (see definition page 18) regardless of species, subject to individual limits and seasons shown below. Fishing for BOTTOMFISH prohibited in waters deeper than 120'.	
LINGCOD	May 1-June 15 May 21-June 15	Hook and line season only. Min. size 26". Max. size 36". Daily limit 1. Spearfishing season only. Min. size 26". Max. size 36". Daily limit 1.
SURFPERCH	Year-round	No min. size. Daily limit 10. Except SHINER PERCH daily limit 15: not included in BOTTOMFISH limit.
ROCKFISH	CLOSED	
PACIFIC COD, POLLOCK, HAKE, WOLF-EEL, SIXGILL SHARK	CLOSED	SIXGILL SHARK may not be removed from the water.
CABEZON	May 1-Nov. 30	No min. size. Daily limit 2.
OTHER FOOD FISH	Year-round	No min. size. Daily limit 2 of each species.
ALL OTHER FISH	Year-round	CLOSED

Black Rockfish

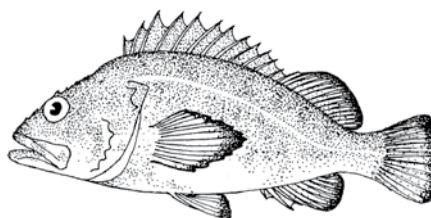


Size: up to 25"

Color: back is bluish-black; sides are gray with black spots.

Look for: similarities with freshwater bass.

Yelloweye Rockfish

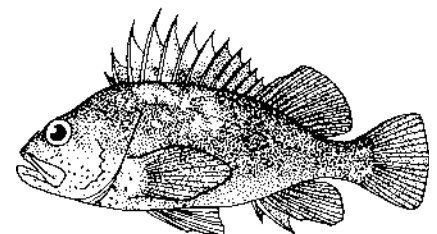


Size: up to 36"

Color: orange-red to orange-yellow.

Look for: bright yellow eyes; fins may have black tips.

Quillback Rockfish



Size: up to 24"

Color: head and throat are light brown with yellow tint.

Look for: high fin on back; may be freckling.

Marine Area 10 Map



Seattle Marine Preserves: Note signs at beach entrances. The area from high tide to minus 4.5' (extreme low water) between the coordinates listed below is closed to harvest except for finfish by hook and line.

- (A) Carkeek Park Marine Preserve**
122°22'49.0"W, 47°42'31.7"N to a sign at 122°22'47.41"W, 47°42'43.51"N
AND 200 yards of beach starting 300 yards north of 122°22'47.41"W, 47°42'43.51"N
- (B) Golden Gardens Marine Preserve**
122°24'07.2"W, 47°41'51.8"N south to the walkway sign
- (C) Discovery Park Marine Preserve**
122°25'31.7"W, 47°39'26.8"N northeast to the sign at sidewalk
AND 122°25'20.7"W, 47°40'3.3"N to a sign posted at 122°25'4.2"W, 47°40'11.1"N
- (D) Richey Viewpoint Marine Preserve**
From the north edge of the park at 122°25'8.8"W, 47°34'30.0"N to 122°24'49.0"W, 47°34'20.2"N
- (E) Emma Schmitz Memorial Marine Preserve**
The residential property fence at 122°24'26.5"W, 47°33'53.5"N south to SW Oregon St.
- (F) Lincoln Park Marine Preserve**
The flagpole at 122°24'05.0"W, 47°31'49.8"N to the sign posted at 122°23'40.4"W, 47°31'33.1"N

See DOH Fish Consumption advisories for Dyes Inlet (Ostrich Bay), Eagle Harbor, King County, Manchester State Park, and Sinclair Inlet, page 30.

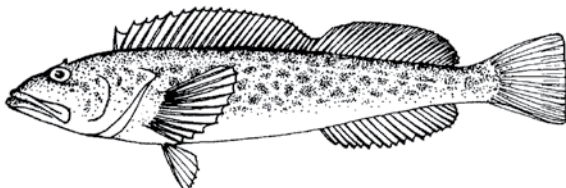
- ① Puget Sound Naval Shipyard at Bremerton:** All waters within 150' of the pier head line CLOSED to fishing for food fish at all times.
- ② Chittenden Locks Closure:** Waters between Chittenden Locks and the Burlington-Northern Railroad bridge CLOSED to fishing. It is illegal to fish for food fish east of a line which is parallel to the Burlington-Northern Railroad bridge and approximately 175' west of the bridge, and which runs through the wooden piling tower structure near the south shore (west of the Chittenden Locks).
- ③ Elliott Bay Public Fishing Pier:** Waters within 100 yards of the Elliott Bay Public Fishing Pier CLOSED to fishing for food fish and the harvest of SHELLFISH except when fishing from the pier.
- ④ Duwamish Waterways Special Rules:** a) Downstream of 1st Ave. South Bridge is part of Marine Area 10. Record SALMON caught here as Marine Area 10 on your catch record card. b) July 1: CLOSED to fishing for SALMON. c) July 2-Aug 8: same rules as Inner Elliott Bay Fishery plus the additional restrictions listed in this section. d) Aug. 9-Aug. 31: CLOSED to fishing for SALMON. e) Sept. 1-Oct. 31: same rules as Area 10 Entire Area plus the additional restrictions listed in this section. f) Nov. 1-June 30: same rules as Area 10 Entire Area. g) Additional restrictions July 1-Oct. 31: from the 1st Ave. South Bridge downstream to an east-west line through SW Hanford St. on Harbor Island (including waters at the Spokane St. Bridge) - night closure, unlawful to use forage fish jig gear, anti-snagging rule, and only salmon hooked inside the mouth may be retained.
- ⑤ Orchard Rocks Conservation Area:** Waters and bedlands of Rich Passage within a 400 yard radius of Orchard Rocks CLOSED to all harvest. Closure does not affect privately owned fish in net pens and the harvest of clams, oysters, and mussels by tideland owners and their families.
- ⑥ Agate Pass Area:** Jan. 1-Mar. 31: catch-and-release and fly fishing only in waters west of a line from Point Monroe to Indianola and east of a line from Point Bolin to Battle Point. Lead-core line prohibited.
- ⑦ Shilshole Bay Closure:** July 1-Aug. 31: waters of Shilshole Bay southeast of a line from Meadow Point to West Point CLOSED to fishing for SALMON.
- ⑧ Elliott Bay Closure:** Waters of Elliott Bay east of a line from West Point to Alki Point: a) July 1: CLOSED to fishing for SALMON. b) July 2-Aug. 8: CLOSED to fishing for SALMON, except Inner Elliott Bay fishery. See Inner Elliott Bay fishery on next page for rules and limits from July 2-Aug. 8. See Inner Elliott Bay Fishery Area below for a description of the open area. c) Aug. 9-Aug. 31: CLOSED to fishing for SALMON. d) Sept. 1-June 30: same rules as Marine Area 10 - Entire Area.
- ⑨ Inner Elliott Bay Fishery Area:** Waters east of a line from Pier 91 to Duwamish Head including the Duwamish Waterways upstream to the 1st Avenue South Bridge: a) July 1: CLOSED to fishing for SALMON. b) July 2-Aug. 8: CLOSED to fishing for SALMON, except open to fishing for SALMON Friday through Sunday each week. See Inner Elliott Bay fishery on next page for rules and limits from July 2-Aug. 8. c) Aug. 9-Aug. 31: CLOSED to fishing for SALMON. d) Sept. 1-June 30: same rules as Marine Area 10 - Entire Area. e) See special rules for the Duwamish Waterways on this page.
- ⑩ Sinclair Inlet Fishery Area:** Waters of Sinclair Inlet and Port Orchard south of the Manette Bridge in Bremerton, south of a line drawn true south from Battle Point, and west of a line drawn true south from Point White - same rules as Marine Area 10 - ENTIRE AREA, except July 1-Sept. 30.

Marine Area 10 - Seattle/Bremerton Area

(From the Apple Cove Point-Edwards Point to a line projected true east-west through the north tip of Vashon Island)

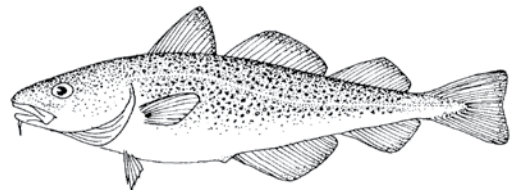
SPECIES	SEASON	ADDITIONAL RULES
SALMON - ENTIRE AREA	June 1-June 30	Catch-and-release. Open only north of a line from Point Monroe to Meadow Point.
	July 1-July 15	No min. size. Daily limit 2 (combined). Release CHINOOK. See Duwamish Waterways Special Rules on previous page. See Shilshole Bay Closure and Elliott Bay Closure on previous page. See Inner Elliott Bay Fishery and Sinclair Inlet Fishery on previous page.
	July 16-Aug. 31	CHINOOK - min. size 22". Other SALMON - no min. size. Daily limit 2 (combined). Release wild CHINOOK. Beginning Aug. 1 release CHUM. See Duwamish Waterways Special Rules on previous page. See Shilshole Bay Closure and Elliott Bay Closures on previous page. See Inner Elliott Bay Fishery and Sinclair Inlet Fishery on previous page.
	Sept. 1-Sept. 30	No min. size. Daily limit 2 (combined). Release CHINOOK. Release CHUM through Sept. 15. See Duwamish Waterways Special Rules on previous page. See Sinclair Inlet Fishery on previous page.
	Oct. 1-Jan. 31	CHINOOK - min. size 22". Other SALMON species - no min. size. Daily limit 2 (combined). Release wild CHINOOK. See Agate Pass Area on previous page. See Duwamish Waterways Special Rules on previous page.
Inner Elliott Bay Fishery (see 9 on previous page for boundaries)	July 2 -Aug. 8	Open Fridays through Sundays ONLY. CHINOOK - min. size 22". Other SALMON species - no min. size. Daily limit 2 (combined). Beginning Aug. 1 release CHUM. See Elliott Bay closure on previous page. See Duwamish Waterways Special Rules on previous page.
Sinclair Inlet Fishery (see 10 on previous page for boundaries)	July 1-Sept. 30	CHINOOK - min. size 22". Other SALMON species - no min. size. Daily limit 2 (combined). Release wild CHINOOK. Aug. 1-Sept. 15: release CHUM.
Elliott Bay Fishing Pier at Terminal 86, Seacrest Pier, Waterman Pier, Bremerton Boardwalk, Illahee State Park Pier	Year-round	CHINOOK - min. size 22". Other SALMON species - no min. size. Daily limit 2 (combined). Only 1 CHINOOK may be retained. Aug. 1-Sept. 15: release CHUM.
TROUT	Year-round	Catch-and-release except up to 2 hatchery STEELHEAD may be retained.
STURGEON	Year-round	Min. size 38" fork length. Max. size 54" fork length. Daily limit 1. Release GREEN STURGEON.
MACKEREL	Year-round	No min. size. No daily limit.
HERRING, SMELT, ANCHOVY, SARDINE, and SAND LANCE	Year-round	No min. size. Daily limit 10 lbs., all species combined. All SMELT caught must be kept and count toward the daily limit. For SMELT: Jig gear may be used 7 days a week. Dipnets may be used 8:00 a.m. Fridays through 8:00 a.m. Wednesdays.
PACIFIC HALIBUT	May 1-May 22 May 28-May 30	May 1-May 22: Open Thursdays through Saturdays ONLY. May 28-May 30: Friday through Sunday ONLY. No min. size. Daily limit 1. *Check the WDFW website at wdfw.wa.gov or call (360) 902-2700 in March 2011 for updates on the 2011 opening for PACIFIC HALIBUT.
BOTTOMFISH	Year-round season. Daily limit is a total of 15 BOTTOMFISH (see definition page 18) regardless of species, subject to individual limits and seasons as shown on previous page. See Agate Pass Area on previous page. Fishing for BOTTOMFISH prohibited in waters deeper than 120'.	
LINGCOD	May 1-June 15 May 21-June 15	Hook and line season only. Min. size 26". Max. size 36". Daily limit 1. Spearfishing season only. Min. size 26". Max. size 36". Daily limit 1.
SURFPERCH	Year-round	No min. size. Daily limit 10. Except SHINER PERCH daily limit 15: not included in BOTTOMFISH limit.
ROCKFISH	CLOSED	
PACIFIC COD, POLLOCK, HAKE, WOLF-EEL, SIXGILL SHARK	CLOSED	SIXGILL SHARK may not be removed from the water.
CABEZON	May 1-Nov. 30	No min. size. Daily limit 2.
OTHER FOOD FISH	Year-round	No min. size. Daily limit 2 of each species.
ALL OTHER FISH	Year-round	CLOSED

Lingcod



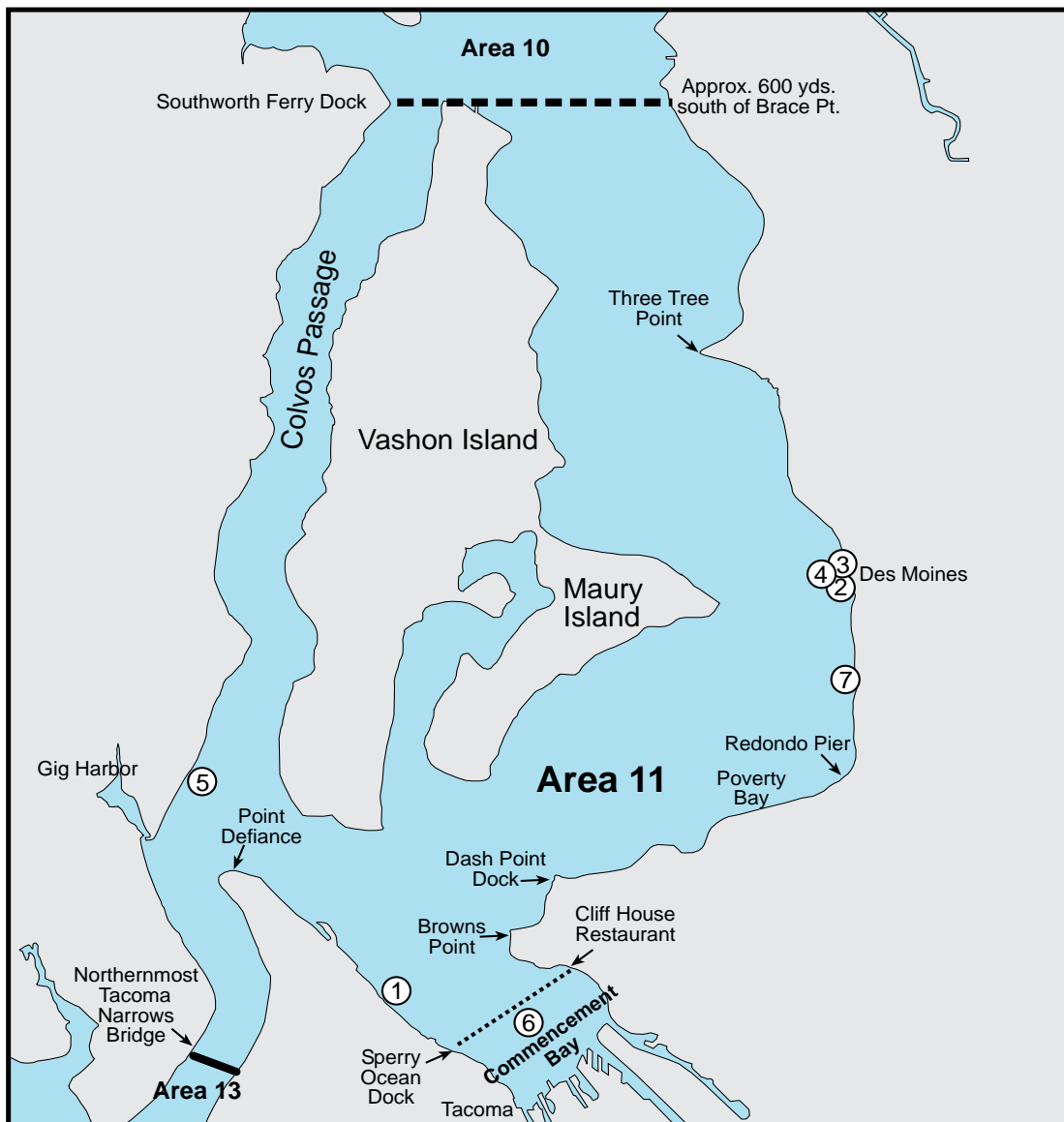
Size: up to 5'
Color: dark brown, gray or green mottling on sides.
Look for: long, single fin on back with only one notch.

Pacific Cod



Size: up to 30"
Color: brown to gray with lighter mottling.
Look for: large whisker under jaw; 3 fins on back.

Marine Area 11 Map



- ① **Les Davis Fishing Pier:** Waters within 100 yards of the Les Davis Fishing Pier, CLOSED to fishing for food fish and to the harvest of SHELLFISH except when fishing from the pier.
- ② **Des Moines Fishing Pier:** Waters within 100 yards of the Des Moines Public Fishing Pier, CLOSED to fishing for food fish and to the harvest of SHELLFISH except when fishing from the pier.
- ③ **City of Des Moines Park Conservation Area:** CLOSED to all harvest.
- ④ **South 239th Street Park Conservation Area:** CLOSED to all harvest.
- ⑤ **Colvos Passage Marine Preserve:** Area enclosed by a line starting at extreme low water 300' SW of the southern boundary of Sunrise County Park, Pierce Co. (latitude 47°20.9'N) due east 300', then southwesterly paralleling the shoreline for 500', then west to the extreme low water line, then northeasterly along extreme low water line to point of origin, CLOSED to all harvest, except SALMON trolling allowed.
- ⑥ **Commencement Bay Closure:** Waters east of a line bearing 215° true (195°30' magnetic) from the Cliff House Restaurant on north shore (approximate position 47°17'51"N, 122°25'54"W) through Sperry Ocean Dock (approximate position 47°16'26"N, 122°27'22"W) - Apr. 1- Apr. 30, and June 1-July 31: CLOSED to fishing for SALMON. Aug. 1-Mar. 31 and May 1-May 31: same rules as Marine Area 11 - ENTIRE AREA. **See Department of Health (DOH) Fish Consumption Advisory on page 30.**
- ⑦ **Saltwater State Park Marine Preserve:** Those waters, bedlands, and tidelands of Saltwater State Park within a line projected from the northernmost marker at the DNR high tide line through 122°19'39.02"W, 47°22'25.14"N; then to 122°19'44.14"W, 47°22'26.11"N; then to 122°19'45.91"W, 47°22'21.54"N; then to 122°19'40.86"W, 47°22'20.60"N; then to the southernmost marker on the shoreline and back along the high tide line to the northernmost marker, CLOSED to all harvest.

Marine Area 11 - Tacoma-Vashon Island

(From the north tip of Vashon Island to the Northernmost Tacoma Narrows Bridge)

SPECIES	SEASON	ADDITIONAL RULES
SALMON - ENTIRE AREA	June 1-Sept. 30	CHINOOK - min. size 22". Other SALMON species - no min. size. Daily limit 2 (combined). Release wild CHINOOK. See Commencement Bay Closure on previous page.
	Oct. 1-Oct. 31	CHINOOK - min. size 22". Other SALMON species - no min. size. Daily limit 2 (combined).
	Nov. 1-Dec. 31	CHINOOK - min. size 22". Other SALMON species - no min. size. Daily limit 2 (combined). Only 1 CHINOOK may be retained.
	Feb. 1-Apr. 30	CHINOOK - min. size 22". Other SALMON species - no min. size. Daily limit 2. Release wild CHINOOK. See Commencement Bay closure on previous page.
Dash Point Dock, Les Davis Pier, Des Moines Pier, Redondo Pier, Point Defiance Boathouse Dock	Year-round	CHINOOK - min. size 22". Other SALMON species - no min. size. Daily limit 2 (combined). Only 1 CHINOOK may be retained.
TROUT	Year-round	Catch-and-release except up to 2 hatchery STEELHEAD may be retained.
STURGEON	Year-round	Min. size 38" fork length. Max. size 54" fork length. Daily limit 1. Release GREEN STURGEON.
MACKEREL	Year-round	No min. size. No daily limit.
HERRING, SMELT, ANCHOVY, SARDINE, and SAND LANCE	Year-round	No min. size. Daily limit 10 lbs., all species combined. All SMELT caught must be kept and count toward the daily limit. For SMELT: Jig gear may be used 7 days a week. Dipnets may be used 8:00 a.m. Fridays through 8:00 a.m. Wednesdays.
PACIFIC HALIBUT	CLOSED	
BOTTOMFISH	Year-round season. Daily limit is a total of 15 BOTTOMFISH (see definition page 18) regardless of species, subject to individual limits and seasons shown below. Fishing for BOTTOMFISH prohibited in waters deeper than 120'.	
LINGCOD	May 1-June 15 May 21-June 15	Hook and line season only. Min. size 26". Max. size 36". Daily limit 1. Spearfishing season only. Min. size 26". Max. size 36". Daily limit 1.
SURFPERCH	Year-round	No min. size. Daily limit 10. Except SHINER PERCH daily limit 15: not included in BOTTOMFISH limit.
ROCKFISH	CLOSED	
PACIFIC COD, POLLOCK, HAKE, WOLF-EEL, SIXGILL SHARK	CLOSED	SIXGILL SHARK may not be removed from the water.
CABEZON	May 1-Nov. 30	No min. size. Daily limit 2.
OTHER FOOD FISH	Year-round	No min. size. Daily limit 2 of each species.
ALL OTHER FISH	Year-round	CLOSED



ABALONE CAN NOT BE LEGALLY HARVESTED

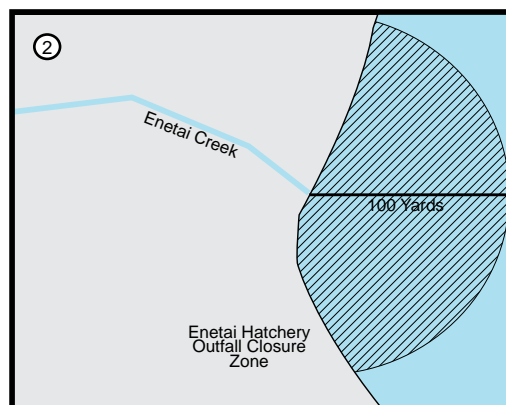
The fishery for pinto (aka northern) abalone has been closed since 1994 in order to reverse population declines. Even with the closure, populations have continued to collapse. Between 1992 and early 2009, abalone populations have fallen by as much as 83%. Efforts are underway to restore this important species and in order for restoration to succeed, we must protect all remaining wild abalone. A suite of partners has created a hatchery program to raise and outplant juvenile abalone, but this program relies on wild abalone as parents for hatchery production. Wild abalone, particularly those found in small groups or aggregations, are critical for natural spawning and recovery. Abalone are sensitive to any physical disturbance. If you see one, please do not disturb it. Pinto abalone are listed as a *State Candidate Species*, a *State Species of Greatest Conservation Need* and a federal *Species of Concern*.

**EVERY INDIVIDUAL IS NEEDED FOR THE FUTURE OF THIS SPECIES
HELP US TO RESTORE ABALONE FOR GENERATIONS TO COME!**

Learn more: WWW.PINTOABALONE.ORG

Anonymously report poaching: 1-877-933-9847 (Washington); 1-800-465-4336 (B.C.)

Marine Area 12 Map

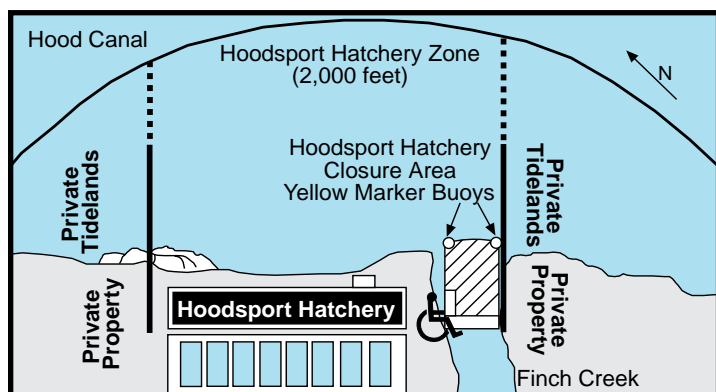


- ① **Sund Rock Conservation Area:** Waters, tidelands, and bedlands enclosed by a line originating at the shore of Hood Canal, at the mouth of Sund Creek (47°26.4'N, 123°7.1'W), then due east to 123°6.9'W, then due south to 47°26'N, then due west until it intersects the beach, then north along the ordinary high water line to the point of origin, including all of the underwater feature known as Sund Rock, CLOSED to all harvest, except tideland owners and their families may still harvest CLAMS, OYSTERS, and MUSSELS from their property.
- ② **Enetai Hatchery Outfall Closure:** Waters within 100 yards of the Enetai Hatchery outfall CLOSED year-round to fishing for food fish.
- ③ **Big Beef Closure:** Aug. 1-Nov. 30: waters within 100' of the Seabeck Hwy. NW Big Beef Creek Bridge CLOSED to fishing for food fish.
- ④ **West Dewatto (DNR Beach 44A):** On the southwest entrance to Dewatto Bay on the east shore of Hood Canal.
- ⑤ **Octopus Hole Conservation Area:** Waters, tidelands, and bedlands of Hood Canal from ordinary highwater to 200 yards due east in an area starting at latitude 47°26'40"N (the first bulkhead south of the sign for Octopus Hole) and extending north 1/3 of a mile to 47°27'01"N are CLOSED to harvest, except tideland owners and their families may still harvest CLAMS, OYSTERS, and MUSSELS from their property.
- ⑥ **Waketick Creek Conservation Area:** Waters and bedlands from Waketick Creek (located 1,000 yards NE of Cummings Pt.) out perpendicular to shore 500 yards, then parallel to shore northeast 1,700 yards, then back to shore along a line perpendicular to shore, excluding the area within 100' of ordinary high water - CLOSED to all harvest.
- ⑦ **Quilcene/Dabob Bay Salmon Fishery Area:** Waters north of a true east line from Point Whitney to the Toandos Peninsula. Same rules as Marine Area 12 - ENTIRE AREA, except Aug. 16-Oct. 15. See Quilcene/Dabob Bay Fishery on next page for rules from Aug. 16-Oct. 15.

Marine Area 12 - Hood Canal

(All waters south of the Hood Canal Bridge)

SPECIES	SEASON	ADDITIONAL RULES
SALMON South of Ayock Point	July 1-Oct. 15	CHINOOK - min. size 22". Other SALMON species - no min. size. Daily limit 4 (combined). Up to 2 CHINOOK may be retained. Release CHUM.
North of Ayock Point	Sept. 1-Oct. 15	No min. size. Daily limit 4 COHO only. See Quilcene/Dabob Bay Fishery Area on previous page and Fishery below.
ENTIRE AREA	Oct. 16-Dec. 31	CHINOOK - min. size 22". Other SALMON species - no min. size. Daily limit 4 (combined). Only 1 CHINOOK may be retained.
	Feb. 1-Apr. 30	CHINOOK - min. size 22". Other SALMON species - no min. size. Daily limit 2. Release wild CHINOOK.
Hoodsport Hatchery Zone (see below for boundaries)	July 1-Dec. 31	No min. size. Daily limit 4 (combined). Up to 2 CHINOOK 24" or longer may be retained. Night closure. July 1-Oct. 15: release CHUM. Please respect private property adjacent to hatchery (see map and description below).
Quilcene/Dabob Bay Fishery (see on previous page for boundaries)	Aug. 16-Oct. 15	No min. size. Daily limit 4 COHO only.
TROUT	Year-round	Catch-and-release except up to 2 hatchery STEELHEAD may be retained.
STURGEON	Year-round	Min. size 38" fork length. Max. size 54" fork length. Daily limit 1. Release GREEN STURGEON.
MACKEREL	Year-round	No min. size. No daily limit.
HERRING, SMELT, ANCHOVY, SARDINE, and SAND LANCE	CLOSED	
PACIFIC HALIBUT	CLOSED	
BOTTOMFISH	CLOSED	
LINGCOD	CLOSED	
SURFPERCH	CLOSED	
ROCKFISH	CLOSED	
PACIFIC COD, POLLOCK, HAKE, WOLF-EEL, SIXGILL SHARK	CLOSED	SIXGILL SHARK may not be removed from the water.
CABEZON	CLOSED	
OTHER FOOD FISH	Year-round	No min. size. Daily limit 2 of each species.
ALL OTHER FISH	Year-round	CLOSED

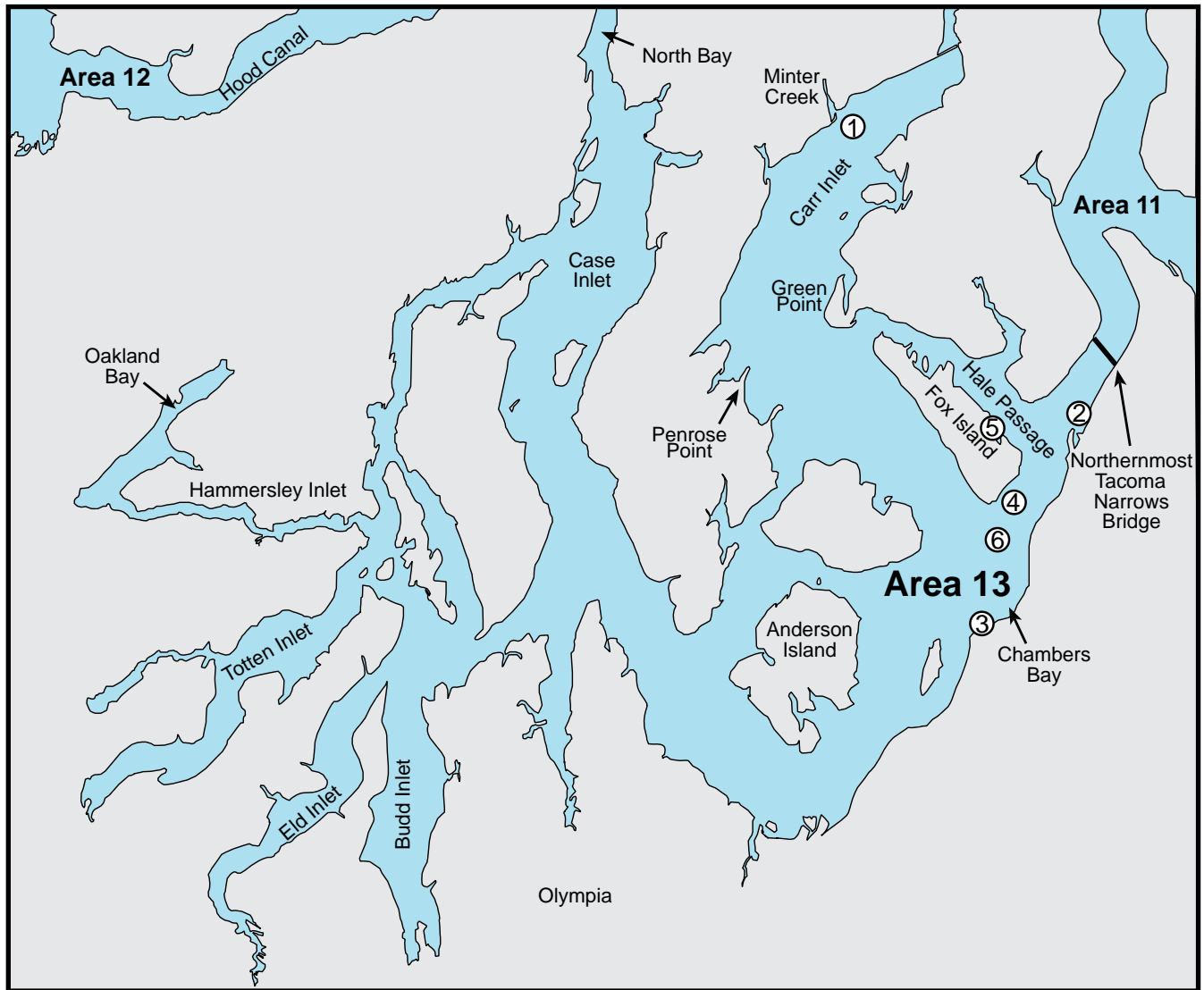


Hoodsport Hatchery Zone: Waters within a 2,000' arc seaward of the yellow marker buoys at the mouth of Finch Creek, Jan. 1-June 30: same rules as Area 12 - ENTIRE AREA; July 1-Dec. 31: see Hoodsport Hatchery Zone above for rules. **Visitors, please be aware that walking or wading onto private property or tidelands adjacent to the hatchery without permission is considered felony trespassing and will be enforced. Please stay within the state-owned tidelands in front of the hatchery complex. The north and south boundaries are clearly marked by signs and floating buoys for your benefit. Closure of these waters may occur if trespassing continues.**

Hoodsport Hatchery Closure: All waters between 2 yellow buoys at the mouth of Finch Creek and the hatchery weir (walkway); and all waters within the channel created by Finch Creek on exposed tidelands, and fishing from any part of the Hoodsport Hatchery structure, CLOSED to fishing year-round, except persons with disabilities who permanently use a wheelchair and/or who have a designated harvester card under WAC 220-55-065 may fish from the ADA-accessible site at the Hoodsport Salmon Hatchery, provided such persons follow all applicable rules and regulations of the adjoining waters of Marine Area 12.

Hood Canal Shrimp District: All waters of Hood Canal south of the Hood Canal floating bridge.

Marine Area 13 Map

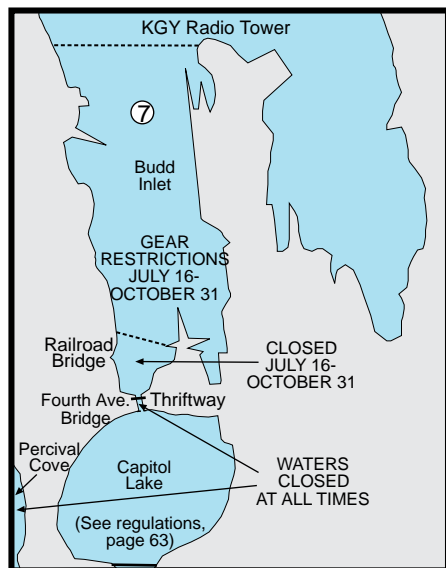


- ① **Minter Creek Closure:** Apr. 16-Sept. 30: waters at Minter Creek mouth within 1,000' of outer oyster stakes CLOSED to fishing for SALMON.
- ② **Titlow Beach Marine Preserve:** All waters due west from the southern end of the Tacoma Outboard Association building near the boat launch ramp to the outer harbor line, then south following the outer harbor line to a line due west from the old ferry landing dock at the 6th Ave. Extension, then following the line to the high water line, then to the point of origin, CLOSED to the harvesting of FISH, SHELLFISH, and WILDLIFE, except SALMON fishing, using lures only, is permitted from shore or non-motorized craft.
- ③ **Saltar's Point Conservation Area:** Tidelands owned by the town of Steilacoom at Saltar's Point Beach located between Montgomery Street and Martin Street, and the water column above these tidelands, CLOSED to all harvest.
- ④ **Fox Island Public Fishing Pier**
- ⑤ **Z's Reef Marine Preserve:** Waters and bedlands beginning at the extreme low water line on the northeast side of Fox Island at 47°14.56'N, 122°35.98'N, then 0.5 nautical mile westerly along the extreme low water line to 47°14.96'N, 122°36.37'W, then northeast to the 85' contour line, southeast along 85' contour, then southeast along the 85' depth contour to a point on a due northeast-southwest line through the point of origin, then southwest to the point of origin, CLOSED to all harvest, except for fly fishing for SALMON allowed.
- ⑥ **Toliva Shoal Closure:** June 16-Apr. 30: closed to fishing for fin fish in waters within 500 yards of the buoy on Toliva Shoal. May 1-June 15: same rules as Marine 13 - ENTIRE AREA, except all rockfish caught must be released.

Marine Area 13 - South Puget Sound

(All waters south of northernmost Tacoma Narrows Bridge)

SPECIES	SEASON	ADDITIONAL RULES
SALMON - ENTIRE AREA	May 1-June 30	CHINOOK - min. size 22". Other SALMON species - no min. size. Daily limit 2 (combined). Release wild CHINOOK. See closures and marine preserves on previous page.
	July 1-Sept. 30	CHINOOK - min. size 22". Other SALMON species - no min. size. Daily limit 2 (combined). Release wild CHINOOK and <u>wild</u> COHO. See closures and marine preserves on previous page and below.
	Oct. 1-Oct. 31	CHINOOK - min. size 22". Other SALMON species - no min. size. Daily limit 2 (combined). Release wild COHO. See closures and marine preserves on previous page and below.
	Nov. 1-Dec. 31	CHINOOK - min. size 22". Other SALMON species - no min. size. Daily limit 2 (combined). Only 1 CHINOOK may be retained. See closures and marine preserves on previous page.
	Jan. 1-Apr. 30	CHINOOK - min. size 22". Other SALMON species - no min. size. Daily limit 1. See closures and marine preserves on previous page.
Fox Island Public Fishing Pier	Year-round	CHINOOK - min. size 22". Other SALMON species - no min. size. Daily limit 2 (combined). Only 1 CHINOOK may be retained. July 1-Oct. 31: release wild COHO.
TROUT	Year-round	Catch-and-release except up to 2 hatchery STEELHEAD may be retained.
STURGEON	Year-round	Min. size 38" fork length. Max. size 54" fork length. Daily limit 1. Release GREEN STURGEON.
MACKEREL	Year-round	No min. size. No daily limit.
HERRING, SMELT, ANCHOVY, SARDINE, and SAND LANCE	Year-round	No min. size. Daily limit 10 lbs., all species combined. All SMELT caught must be kept and count toward the daily limit. For SMELT: Jig gear may be used 7 days a week. Dipnets may be used 8:00 a.m. Fridays through 8:00 a.m. Wednesdays.
PACIFIC HALIBUT	CLOSED	
BOTTOMFISH	Year-round season. Daily limit is a total of 15 BOTTOMFISH (see definition page 18) regardless of species, subject to individual limits and seasons shown below. See closures and marine preserves on previous page and below. Fishing for BOTTOMFISH prohibited in waters deeper than 120'.	
LINGCOD	May 1-June 15 May 21-June 15	Hook and line season only. Min. size 26". Max. size 36". Daily limit 1. Spearfishing season only. Min. size 26". Max. size 36". Daily limit 1.
SURFPERCH	Year-round	No min. size. Daily limit 10. Except SHINER PERCH daily limit 15: not included in BOTTOMFISH limit.
ROCKFISH	CLOSED	
PACIFIC COD, POLLOCK, HAKE, WOLF-EEL, SIXGILL SHARK	CLOSED	SIXGILL SHARK may not be removed from the water.
CABEZON	May 1-Nov. 30	No min. size. Daily limit 2.
OTHER FOOD FISH	Year-round	No min. size. Daily limit 2 of each species.
ALL OTHER FISH	Year-round	CLOSED



⑦ **Budd Inlet Closure:** waters of Budd Inlet at Olympia south of the Fourth Ave. Bridge are CLOSED to fishing year-round; July 16-Oct. 31: all contiguous waters between the Fourth Ave. Bridge and a line from the northwest corner of the Thriftway Market building to a point 100 yards north of the railroad bridge located on the western side of the inlet CLOSED to fishing for SALMON and BOTTOMFISH.

July 16-Oct. 31: night closure and anti-snagging rule in effect in waters of Budd Inlet south of a line projected true west from the KGY Radio Station Tower to the western shore of the inlet and north of a line from the northwest corner of the Thriftway Market building to a point 100 yards north of the railroad bridge located on the western side of the inlet.

See Department of Health (DOH) Fish Consumption Advisories on page 30.