

# Shellfish/Seaweed Rules

## 3 Steps to Safe and Legal Shellfish Harvest - It's your responsibility!

### 1 ● ● ● Know the Rules (You could get a ticket)

Is the harvesting season open? Read the rules for seasons, size, and bag limits. Always check the toll free WDFW Emergency Shellfish Rule Change Hotline (866) 880-5431. Current harvesting season information can always be found by using the clickable map on the WDFW website at <http://wdfw.wa.gov/fishing/shellfish/beaches>.

### 2 ● ● ● Pollution Closures (You could get sick)

Does the beach meet standards for healthy eating? Some closures are shown on the map on page 131. For more pollution closures visit the Washington Department of Health website at [www.doh.wa.gov/shellfishsafety.htm](http://www.doh.wa.gov/shellfishsafety.htm), call (360) 236-3330, the Shellfish Safety toll-free Hotline at (800) 562-5632, or the local county health department.

### 3 ● ● ● Marine Biotoxin Closures and *Vibrio* Warnings (You could get sick or die)

Is there an emergency closure due to Shellfish Poisoning (PSP/ASP) or *Vibrio* bacteria? Check the DOH website at [www.doh.wa.gov/shellfishsafety.htm](http://www.doh.wa.gov/shellfishsafety.htm), call (360) 236-3330, or the Shellfish Safety toll-free Hotline at (800) 562-5632.

**NOTE: Emergency rules may occur throughout the year and will supersede the rules contained in this pamphlet.** Changes can be found by calling the Shellfish Rule Change toll-free Hotline at (866) 880-5431, contacting statewide customer service, or by visiting the WDFW website.

## Licenses

A Combination or a Shellfish/Seaweed License is required for all shellfish (except CRAWFISH) and SEAWEED harvest. A catch record card, and endorsement is required to fish for DUNGENESS CRAB in Puget Sound. (See License Requirements, page 14).

## Designated Harvesters

Persons with a disability must have a designated harvester card issued by WDFW if using another harvester to assist them with their catch. The person harvesting the catch on behalf of the licensee with a disability must be in possession of the designated harvester card while assisting the person with a disability. Both the digger and the person with a disability must be licensed. The licensee is also required to be in the direct line of sight of the designated harvester who is harvesting shellfish for them. If this is not possible, the licensee is required to be within ¼ mile of the designated harvester who is harvesting shellfish for them.

## Safe Handling Practices

- Water color does not indicate SHELLFISH safety.
- Rinse your catch in salt (not fresh) water before leaving the beach, quickly cool your catch on ice or in a refrigerator, and cook as soon as possible.
- Wash all SEAWEED before eating.
- Cook shellfish thoroughly before eating.
- Cooking, rinsing, or freezing **DOES NOT** destroy all pollutants. CRAB can also concentrate pollutants in their internal organs (crab butter). Clean CRAB before cooking. Eat only the meat.

## Shellfish Safety

Eating contaminated shellfish or seaweed can cause serious illness or death. The only way to be safe is to "Know Before You Dig." Check the Department of Health (DOH) website [www.doh.wa.gov/ehp/sf/default-sf.htm](http://www.doh.wa.gov/ehp/sf/default-sf.htm), or call the local health department. For shellfish safety closures call the Shellfish Safety Hotline at (800) 562-5632.

Don't harvest in areas that are polluted. It can make you sick. Pollution can come from many sources like sewage drain pipes, failing septic systems, farm practices, wildlife, and pet waste. Use sani-cans, vault toilets and other approved facilities. Properly dispose of human and pet waste if no facilities are available.

Don't harvest in areas with marine biotoxins (PSP/ASP) or *Vibrio* warnings. You could get sick or die.

### PARALYTIC SHELLFISH POISONING (PSP) & AMNESIC SHELLFISH POISONING (ASP):

- Can make you sick or cause death
- Can't be destroyed by cooking or freezing
- Are produced by algae that usually can't be seen
- Do not turn water red like the old name suggests



**VIBRIO BACTERIA:** In the summer, sea water often has high levels of naturally occurring bacteria. Unlike biotoxins, these bacteria can be killed by cooking. To avoid getting sick, DOH advises that you COOK ALL SHELLFISH thoroughly.

For more information on PSP, ASP and *Vibrio* bacteria, visit the DOH website, call the main office at (360) 236-3330, or contact the local county health department.

## Possession Limit

One daily limit in fresh form. Additional shellfish may be possessed in frozen or processed form.

## Marine Preserves & Conservation Closures

For all Shellfish Species, see Marine Area maps (pages 104-127) for closures pertaining to the following areas:

**AREA 7:** San Juan Islands Marine Preserve.

**AREA 9:** Edmonds Public Fishing Pier, Brackett's Landing Shoreline Sanctuary, Keystone Conservation Area, and Admiralty Head Marine Preserve.

**AREA 10:** Elliott Bay Public Fishing Pier, Orchard Rocks Conservation Area, Carkeek Park, Golden Gardens, Discovery Park, Richey Viewpoint, Emma Schmitz Memorial, Lincoln Park, and Eagle Harbor.

**AREA 11:** Des Moines Fishing Pier, Les Davis Fishing Pier, Colvos Passage Marine Preserve, City of Des Moines Park, and South 239th Street Park, Saltwater State Park Marine Preserve.

**AREA 12:** Sund Rock Conservation Area, Waketickah Creek Conservation Area, and Octopus Hole Conservation Area.

**AREA 13:** Salter's Point Conservation Area, Titlow Beach Marine Preserve, and Z's Reef Marine Preserve.

## Tideland Ownership

Most Puget Sound, Hood Canal, Grays Harbor, and Willapa Bay beaches are privately owned. SHELLFISH and SEAWEED may not be taken from private beaches without the owner's or lessee's permission. Private tideland owners and lessees, and members of their immediate family (grandparents, parents, spouse, siblings, children, and grandchildren) are exempt from personal use daily limits when taking CLAMS, OYSTERS, and MUSSELS harvested for their own personal use from their own tidelands. Daily limits apply for all other shellfish, all other people, and all other beaches. Everyone harvesting shellfish in excess of the daily limit from private beaches for presumed commercial purposes needs a shellfish certification from the Department of Health (see RCW 69.30.010(8)).

# Public Beach List - Special Rules

**Two different state agencies are responsible for two different types of recreational shellfish harvest closures.** The Washington Department of Fish and Wildlife (WDFW) is responsible for conservation closures or season adjustments, which are listed in the Public Beach List (below). These closures are designed to protect and conserve intertidal shellfish populations. The Washington Department of Health (DOH) is responsible for human health-related closures in response to potentially life-threatening environmental conditions, which result from PSP/ASP, *Vibrio* bacteria or pollution, as described in the Shellfish Safety section on page 128. Some, but not all of these beaches are also closed by WDFW. Permanent WDFW/DOH closures and periodic DOH harvest advisories are shown on page 131.

DOH SEASON	WDFW SEASON	HARVEST STATUS	REASON
Open	Open	SAFE & LEGAL	
Open	Closed	ILLEGAL	Conservation closure or season adjustment
Closed	Open	NOT SAFE	Potentially life-threatening environmental conditions
Closed	Closed	NOT SAFE & ILLEGAL	

Not all beaches have been evaluated by DOH, so if you have any concerns call the local health department or DOH at (360) 236-3330 or (800) 562-5632. In addition, some beaches may be posted with warning signs - look for signs as you access the beach.

**ALWAYS CHECK BOTH THE CURRENT WDFW SEASON AND THE DOH HEALTH CLOSURE STATUS BEFORE HARVESTING ANY PUBLIC BEACH.**

**Beaches that do not appear on the Public Beach List (below) or on the Health Restrictions map on page 131 may be open to harvest year-round.** For beach locations check the WDFW website at <http://wdfw.wa.gov/fishing/shellfish/beaches/>. The website includes interactive beach maps providing information about access, available species, harvest tips, driving directions, facility descriptions and links to the DOH Shellfish Safety webpages. Also, check the Marine Preserves and Conservation Closures on page 128 before planning your trip.

**NOTE: Emergency rules may occur throughout the year and will supersede the rules contained in this pamphlet.** Changes can be found by calling the **Shellfish Rule Change Hotline (866) 880-5431**, contacting the WDFW customer service desk (360) 902-2700, or by visiting the WDFW website <https://fortress.wa.gov/dfw/erules/efishrules/>.

**RAZOR CLAM** seasons occur only after clam samples have been tested by Washington Department of Health (DOH) and are found to be safe for human consumption.

BEACH NAME	CLAM/MUSSEL SEASON	OYSTER SEASON	ADDITIONAL RULES
Ala Spit	May 1-May 31	May 1-May 31	Limited natural production of OYSTERS.
Belfair State Park	Year-round	Year-round	Open only in area defined by boundary markers and posted signs.
Cama Beach State Park	CLOSED	CLOSED	
Camano Island State Park	CLOSED	CLOSED	
Dosewallips State Park	Mar. 1-July 31	Year-round	Open only in area defined by boundary markers and posted signs.
Duckabush	Year-round	Year-round	All state-owned tidelands on the west shore of Hood Canal from Quatsap Point to the south end of the Duckabush River flats.
Dungeness Spit and National Wildlife Refuge Tidelands	May 15-Sept. 30	May 15-Sept. 30	Limited natural production of OYSTERS.
Eagle Creek	July 1-July 31	Year-round	
Fort Flagler State Park	Apr. 15-July 31	Apr. 15-July 31	Including that portion of the spit west of the Park boundary (Rat Island).
Frye Cove County Park	Jan. 1-May 15	Jan. 1-May 15	
Garrison Bay/British Camp	All tidelands of Guss Island, and all state and federally owned tidelands at British Camp (San Juan County) between the National Park Service dinghy dock and the southern park boundary, are closed to CLAM harvest year-round. Tidelands north of the dinghy dock to Bell Point are open year-round.		
Hope Island State Park	May 1-May 31	May 1-May 31	Located in South Puget Sound.
Illahee State Park	Apr. 1-July 31	Apr. 1-July 31	Limited natural production of CLAMS.
Kayak Point County Park	CLOSED	CLOSED	
Kitsap Memorial State Park	May 15-June 30	May 15-June 30	
Kopachuck State Park	June 1-July 31	Mar. 1-July 31	
Mystery Bay State Park	Oct. 1-Apr. 30	Oct. 1-Apr. 30	Health closure May 1-Sept. 30. See page 131.
Nahcotta Tidelands	CLOSED	Year-round	Open only in the area defined by boundary markers and posted signs.
Oak Bay County Park	May 1-July 31	May 1-July 31	Limited natural production of OYSTERS.
Oyster Reserves of North Bay (Case Inlet)	Year-round	Year-round	
Oyster Reserves of Oakland Bay	Year-round	Year-round	EXCEPT area defined by boundary markers and signs is closed year-round to CLAM and OYSTER harvest.
Oyster Reserves of Totten and Eld Inlets	CLOSED	CLOSED	

# Public Beach List - Special Rules

BEACH NAME	CLAM/MUSSEL SEASON	OYSTER SEASON	ADDITIONAL RULES
Oyster Reserves of Willapa Bay	CLOSED	CLOSED	EXCEPT Diamond Point on the northwest side of Long Island between reserve monuments 39-41, and Pinnacle Rock on the southwest side of the Long Island between reserve monuments 58-59, are open year-round to CLAM and OYSTER harvest.
Pacific Ocean beaches	Nov. 1-Mar. 31	Nov. 1-Mar. 31	Closed Apr. 1-Oct. 31 (unless listed otherwise) because of PSP (except RAZOR CLAMS).
Penrose Point State Park	Mar. 1-May 31	Mar. 1-May 31	
Pitt Island	CLOSED	CLOSED	
Point Whitney Lagoon	Mar. 1-Mar. 31	Year-round	
Point Whitney Tidelands	Mar. 15-Apr. 30	Year-round	Excluding Point Whitney Lagoon.
Port Townsend Ship Canal/ Portage Canal	Jan. 1-July 31	Jan. 1-July 31	See Marine Area 9 map, page 119. Limited natural production of OYSTERS.
Potlatch DNR Tidelands	Apr. 1-Aug. 15	Apr. 1-Aug. 15	
Potlatch State Park	Apr. 1-Aug. 15	Apr. 1-Aug. 15	
Purdy Spit County Park	CLOSED	CLOSED	Southern shore of the spit, from the boat ramp east to the bridge, is closed.
Quilcene Bay WDFW Tidelands	Apr. 1-Dec. 31	Apr. 1-Dec. 31	All state-owned tidelands in Quilcene Bay north of a line drawn from the Quilcene Boat Haven to Fisherman's Point are closed, except those state-owned tidelands on the west side of the bay, north of the Quilcene Boat Haven, are open Apr. 1- Dec. 31. Open from official sunrise to official sunset. <b>CLAM min. size 1¼"</b> .
Scenic Beach State Park	CLOSED	CLOSED	
Sequim Bay State Park	May 1-June 30	Year-round	
Shine Tidelands State Park	Jan. 1-May 15	Jan. 1-May 15	
South Indian Island County Park	Apr. 1-July 31	Apr. 1-July 31	And adjacent tidelands. Limited natural production of OYSTERS.
Spencer Spit State Park	Mar. 1-July 31	Mar. 1-July 31	Limited natural production of OYSTERS.
Triton Cove Tidelands	June 1-Aug. 31	Year-round	¼ mile north of Triton Cove State Park.
Twanoh State Park	July 15-Sept. 30	Year-round	
West Dewatto (DNR 44A)	Aug. 1-Sept. 30	Year-round	
Willapa Bay	Year-round	Year-round	Bonus limit: 24 COCKLES in addition to the regular CLAM limit. See Oyster Reserves, state-owned, and Nahcotta Tidelands.
WINAS-Maylor Point - East	National security concerns control access. Contact John Phillips, Naval Air Station, (360) 257-8873 or (360) 257-1009, for information on access requirements.		
Wolfe Property State Park	Jan. 1-May 15	Jan. 1-May 15	From 7 Sisters Rd. north to the lagoon channel adjacent to the spit connecting Hood Head to the mainland. North and east of the lagoon channel is private property.

## Intertidal Shellfish Enhancement Program

WDFW's shellfish program has planted several public beaches with OYSTERS, CLAMS, and GEODUCKS. Some beaches have increased harvest opportunity as a result of WDFW's enhancement activities. If a beach is open for CLAMS, MUSSELS, or OYSTERS, harvest is encouraged on these beaches.

Birch Bay State Park - Oysters  
 Blake Island State Park - Geoducks  
 DNR 24 - Oysters  
 DNR 44A West Dewatto - Clams/Oysters  
 Frye Cove County Park - Clams/Oysters  
 Illahee State Park - Oysters  
 Kopachuck State Park - Oysters  
 Mystery Bay State Park - Oysters

North Bay Reserves East - Oysters  
 Oak Bay County Park - Clams  
 Penrose State Park - Clams/Oysters  
 Point Whitney Lagoon - Clams  
 Point Whitney Tidelands - Clams  
 Potlatch State Park - Oysters  
 Quilcene Bay WDFW Tidelands - Oysters  
 Sequim Bay State Park - Clams/Oysters

Shine Tidelands State Park - Clams/Geoducks  
 South Indian Island County Park - Clams  
 Triton Cove Tidelands - Clams  
 Twanoh State Park - Clams  
 West Penn Cove - Oysters  
 Wolfe Property State Park - Clams/Oysters

Varnish Clams have the ability to retain biotoxins at higher levels and longer than other clams. Always check the biotoxin hotline before harvesting. **1-800-562-5632** or [www.doh.wa.gov/shellfishsafety.htm](http://www.doh.wa.gov/shellfishsafety.htm)

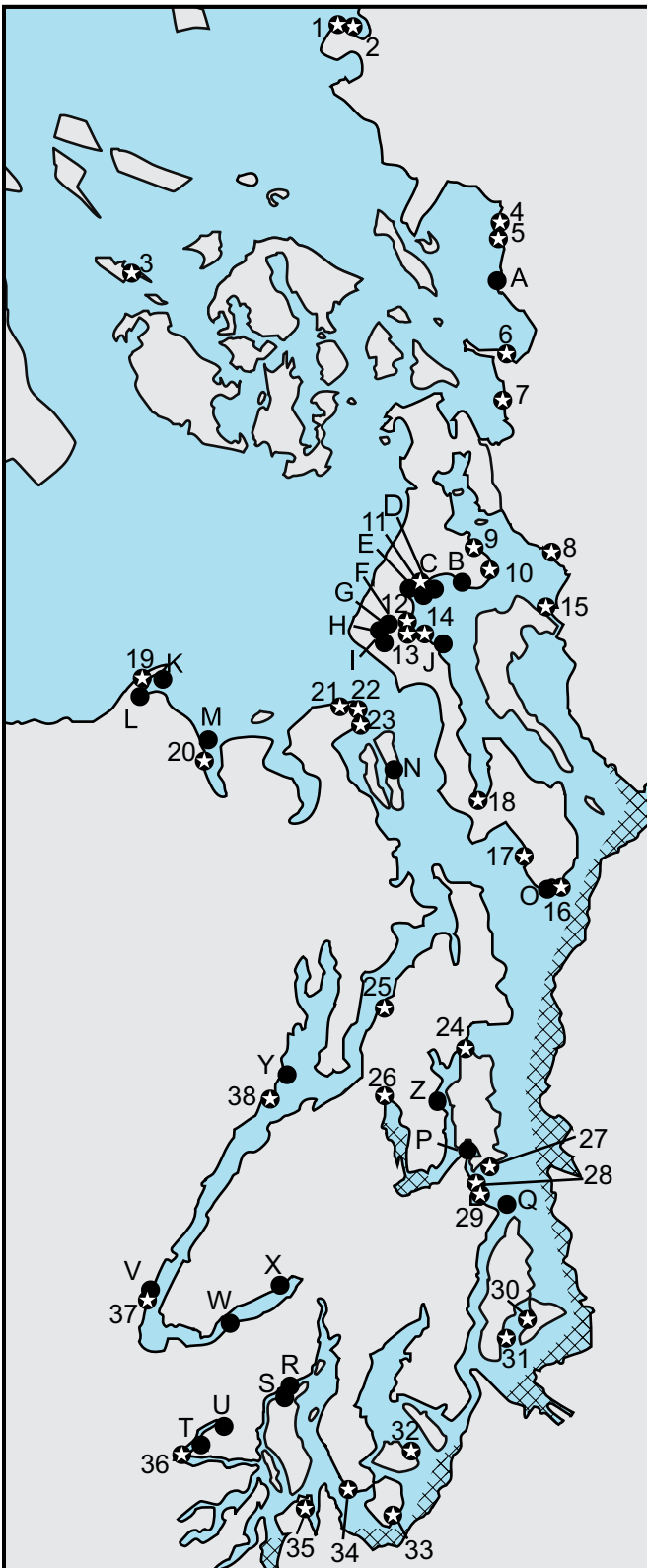


**Varnish clam**  
*Nuttalia obscura*

Up to 2½", with shiny brown coating on the outside, purple on the inside of shell.

# Health Restrictions - Clams, Oysters, and Mussels

Before harvesting shellfish check the Department of Health toll-free Shellfish Safety hotline, (800) 562-5632, or (360) 236-3330 in the Olympia area, or on the Internet, [www.doh.wa.gov/ehp/sf/default-sf.htm](http://www.doh.wa.gov/ehp/sf/default-sf.htm). If you need further assistance, contact the county health department. County health department phone numbers are published in the government pages of local telephone directories.



**These areas and all beaches in the following list are CLOSED year-round by the Department of Fish and Wildlife (WDFW) and Department of Health (DOH):**

- On the Strait of Juan de Fuca - Port Angeles Harbor and Port Angeles Coast Guard.
- All beaches within the (cross-hatched) areas.
- All beaches around ferry docks.
- All beaches below indicated by this symbol on the map: ★

- |                             |   |
|-----------------------------|---|
| 1 Semiahmoo County Park     | 21 North Beach County Park                                |
| 2 Semiahmoo                 | 22 South Point Wilson                                     |
| 3 Reid Harbor - South Beach | 23 North Point Hudson                                     |
| 4 Post Point                | 24 Suquamish (Old Man House) and Old Man House State Park |
| 5 Chuckanut Bay             | 25 Bangor   |
| 6 Samish Beach              | 26 Silverdale Waterfront Park                             |
| 7 Bay View State Park       | 27 Fort Ward State Park                                   |
| 8 Skagit Wildlife Area      | 28 Manchester State Park                                  |
| 9 DNR-144 (Sleeper)         | 29 Little Clam Bay  |
| 10 DNR-142                  | 30 Dockton County Park                                    |
| 11 Oak Harbor City Park     | 31 DNR-79   |
| 12 Monroe Landing           | 32 McNeil Island/Gertrude Island                          |
| 13 Coupeville               | 33 South Oro Bay  |
| 14 Harrington Beach         | 34 Taylor Bay   |
| 15 West Pass Access         | 35 Woodard Bay  |
| 16 Northeast Cultus Bay     | 36 Walker County Park                                     |
| 17 Dave Mackie County Park  | 37 Hoodspout  |
| 18 Freeland County Park     | 38 Pleasant Harbor State Park                             |
| 19 Graveyard Spit           |   |
| 20 Pitship Point            |   |

**The Department of Health (DOH) has harvest advisories on the following beaches, as indicated by this symbol: ●**

An advisory is placed on beaches that MAY be subject to periodic contamination from pollution sources or MAY intersect polluted areas. Check the DOH website for details, or contact the county health department prior to harvesting these beaches.

- |   |
|---|
| A. Larrabee State Park (north end)  |
| B. WINAS Crescent Harbor  |
| C. WINAS-Maylor Point - E (north end)                                     |
| D. Blowers Bluff  |
| E. WINAS-Maylor Pt - W (inside Oak Harbor)                                |
| F. East San de Fuca   |
| G. San de Fuca  |
| H. West Penn Cove (N Penn Cove)   |
| I. Madrona (Penn Cove)  |
| J. Long Point   |
| K. Dungeness National Wildlife Refuge                                     |
| L. Cline Spit   |
| M. DNR-411A   |
| N. Mystery Bay State Park   |
| O. Scatchet Head  |
| P. Point White  |
| Q. Blake Island State Park (east side)                                    |
| R. DNR-34   |
| S. Jarrell Cove   |
| T. North Chapman Cove, Northeast Chapman Cove, and Southeast Chapman Cove |
| U. Oakland Bay  |
| V. North Hoodspout Hatchery   |
| W. Twanoh State Park  |
| X. Belfair State Park   |
| Y. Dosewallips State Park   |
| Z. Brownsville  |

DNR 426 (not shown) west of Port Angeles on the Strait of Juan de Fuca.



# Razor Clam Rules

AREA	SPECIES	SEASON	ADDITIONAL RULES
<p><b>RAZOR CLAMS</b> (<i>Siliqua patula</i>) Grows to 6"; fragile, thin elongated shells are covered with shiny, tan lacquer-like skin coating the shell. Found only on Pacific coastal beaches. <b>Razor clam seasons occur only after clam samples have been tested by Washington Department of Health (DOH) and are found to be safe for human consumption.</b></p>			
COASTAL BEACHES	RAZOR CLAMS	TO BE ANNOUNCED	No min. size. Daily limit first 15 dug regardless of size or condition. Each limit must be in a separate container.
<ul style="list-style-type: none"> <li>May only be taken by hand, hand-operated shovel, or tube with a minimum outside diameter of 4" (4" x 3" if elliptical).</li> <li>All clams dug are part of digger's limit - you may not return any razor clams to the beach or water.</li> <li>It is illegal to drive any vehicle or to lead or ride a horse on razor clam beds (westerly of a line 150' waterward of the extreme upper limit of the hard sand area). Pressure from weight of vehicles and digging action of horses' hooves cause clam mortality.</li> <li>The person with a disability for whom razor clams are being dug must be in line of sight of the designated harvester or within ¼ mile of the digging site. Both the digger and the person with a disability must be licensed. The person with a disability must have a designated harvester card. The designated harvester must have the designated harvester card in their possession while assisting the person with a disability. (See page 15).</li> </ul>			
<p><b>OCEAN RAZOR CLAM BEACH DESCRIPTIONS</b></p> <p><b>Long Beach:</b> Columbia River north jetty to Leadbetter Point (includes Seaview, Cranberry, Klipsan, Ocean Park, and Oysterville).</p> <p><b>Twin Harbors:</b> Cape Shoalwater to the Grays Harbor south jetty (includes North Cove, Grayland, and Westport).</p> <p><b>Copalis:</b> Grays Harbor north jetty to the Copalis River (includes Ocean Shores, Oyhut, Ocean City, and Copalis).</p> <p><b>Mocrocks:</b> Copalis River to the southern boundary of the Quinault Indian Nation (includes Iron Springs, Roosevelt, Pacific Beach, and Moclips).</p> <p><b>Kalaloch:</b> Olympic National Park South Beach Campground to Brown's Point (just south of Olympic National Park Beach Trail #3).</p>			
<p><b>PERMANENT RAZOR CLAM RESERVE CLOSURES</b> (Areas marked with posts and signs)</p> <p>Razor clam sanctuaries (Reserves) are ¼ mile sections of coastal ocean beaches located on three beach areas that are used to assist in the management of the razor clam resource. The three areas are marked with metal posts and are signed to designate a "no digging" area. The three areas are:</p> <p><b>Copalis Beach</b> - from a point 0.4 miles south of the Ocean City approach (2nd Ave.) and extending south for ¼ mile.</p> <p><b>Twin Harbors Reserve</b> - from the middle of the County Line Rd. approach south for ¼ mile.</p> <p><b>Long Beach Reserve</b> - beginning 2.7 miles north of the Oysterville approach and extending north for ¼ mile.</p>			

## Examples of Unclassified Marine Invertebrates

An unclassified marine invertebrate is any shellfish species not defined as shellfish on page 19. Examples include: shore crabs, graceful crabs, sea stars, sand dollars, moon snails, shore snails, marine worms and nudibranchs. **NO HARVEST ALLOWED.**



**Oyster Drill Snail and Egg Case**

The shell is about 1½" with ornate ridges commonly attached to clam and oyster shells. Egg cases are yellow to reddish. A voracious predator of marine bivalves. It is unlawful to transfer Japanese oyster drills from one beach to another. (WAC 220-72-011 and WAC 220-72-015)



**Sea Star**



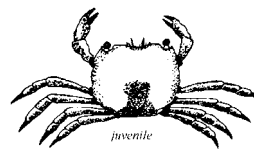
**Moon Snail**



**Pacific Graceful Crab**

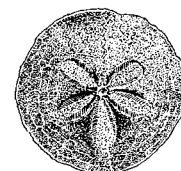


**Shore Crab**



adult

juvenile



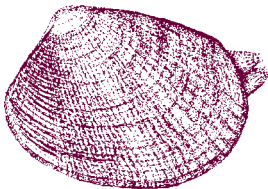
**Sand Dollar**



# Shellfish/Seaweed Species Rules

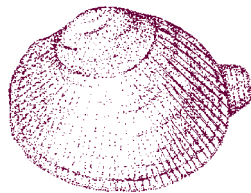
AREA	SPECIES	SEASON	ADDITIONAL RULES
<b>ABALONE</b>			
ALL AREAS	PINTO	CLOSED	Surveys show a continued decline in numbers of all size abalone. The closure is necessary to allow recovery of stocks.
<b>CLAMS, OTHER THAN RAZOR CLAMS</b> Caution: for Shellfish Safety and Department of Health contact information see pages 128 and 131. Clams can be dug by hand or hand-operated fork, pick, rake, or shovel. Each digger must use a separate container. Digging equipment may be shared. Clam holes must be refilled. To reduce clam mortality, please push any undersized clams into the refilled hole.			
PUBLIC BEACHES	GEODUCKS	Year-round except as noted on the Public Beach List	No min. size. Daily limit first 3 dug. It is unlawful to thrust any instrument through the neck of a geoduck. It is unlawful to possess only the neck of a geoduck.
	HORSE CLAMS	↓	No min. size. Daily limit first 7 dug regardless of condition.
	ALL OTHER SPECIES (Listed below)		Daily limit no more than 40 clams, not to exceed 10 lbs. in the shell, all species combined (excluding HORSE CLAMS and GEODUCKS). For species with a minimum size, measure across longest distance of shell.
	NATIVE LITTLENECKS		Min. size 1½".
	MANILAS		Min. size 1½".
	BUTTERS		Min. size 1½".
	COCKLES		Min. size 1½".
	EASTERN SOFTSHELLS		No min. size. Must be retained regardless of size or condition.
	ALL OTHER MARINE CLAMS		No min. size.
	Bonus limits: See Willapa Bay on Public Beach List, page 130.		
ALL FRESH WATER AREAS	ALL SPECIES	CLOSED	

These four species have a 1½" minimum size limit, unless otherwise noted on the Public Beach List, page 130.



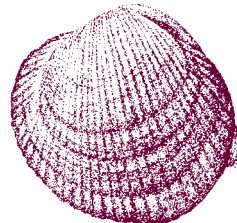
**Manila littleneck clam**  
*Venerupis philippinarum*

Average size is 1-2", up to 2½". Oblong shell has concentric and radiating lines. May have colored, patterned shells. Siphon tips are split. Found to 4" below surface.



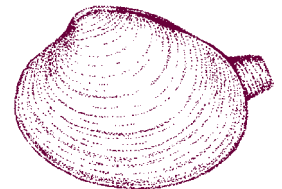
**Native littleneck clam**  
*Leukoma staminea*

Average size is 1-2", up to 2½". Rounded shell has concentric and radiating lines. Siphon tips are fused. Found 6-10" below surface.



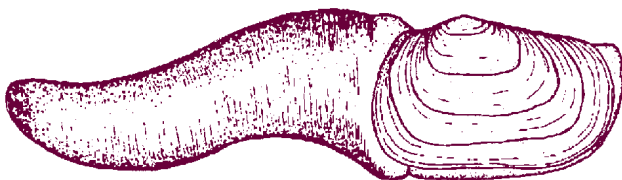
**Cockle clam**  
*Clinocardium nuttallii*

Prominent, evenly-spaced ridges which fan out from the hinge. Mottled, light brown. Can grow to 5". Found just below surface.



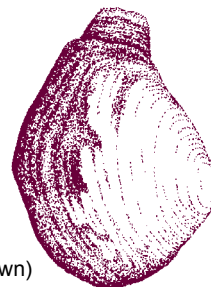
**Butter clam**  
*Saxidomus giganteus*

Average size is 3-4", up to 6". Shells have no radiating ridges and are usually chalky-white. The siphon can be pulled into its shell. Usually found 12-18" below surface.



**Geoduck clam**  
*Panopea generosa*

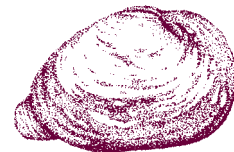
Heavy, oblong shell, rounded at one end. Appears cut-off at the other. The siphon can't be pulled into the shell. Found 2-3 feet below surface. Can weigh up to 10 lbs.



**Horse clam**  
*Tresus capax* (shown)  
*Tresus nuttallii* (not shown)

Large, can grow up to 8". Shell is chalky-white with yellow-brown patches of "skin". The siphon can't be pulled into shell and has a leather-like flap on the tip. Found 1-2 feet below surface.

(Not drawn to scale)



**(Eastern) Softshell clam**  
*Mya arenaria*

Can grow to 6". Shells are soft, chalky-white with a rough irregular surface. Shell is rounded at the foot end, pointed at the siphon end. Siphon doesn't have leather-like flap on the tip. Found to 18" below surface.

# Shellfish/Seaweed Species Rules

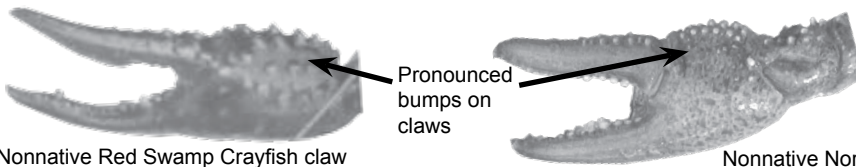
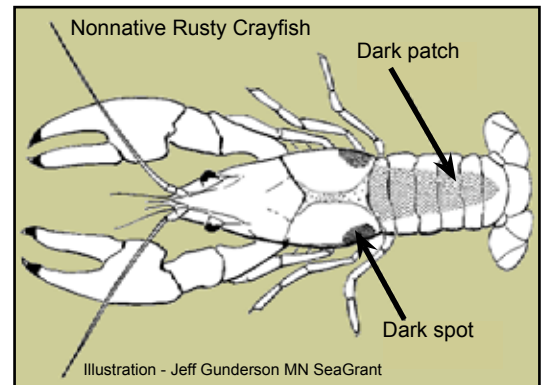
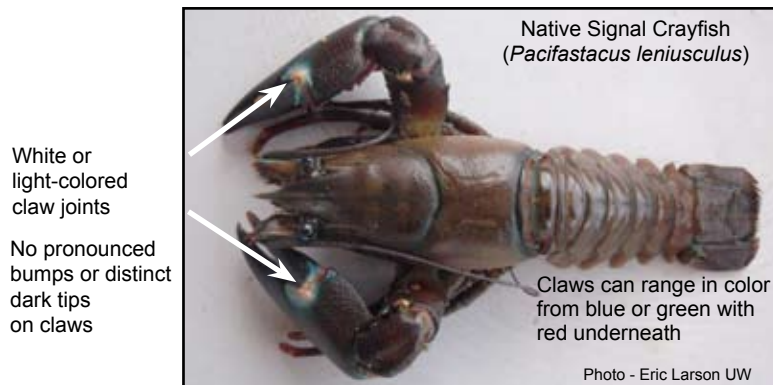
AREA	SPECIES	SEASON	ADDITIONAL RULES
------	---------	--------	------------------

**CRAB** See following pages for crab harvest and gear rules.

## CRAYFISH (Crawfish)

ALL WATERS	NATIVE SPECIES	1 <sup>st</sup> Mon. in May-Oct. 31	Min. size 3¼" from tip of rostrum (nose) to tip of tail. Daily limit 10 lbs in shell. All females with eggs or young attached must be immediately returned to the water unharmed. No Shellfish/Seaweed license is required. See gear rules on page 139.
	NONNATIVE SPECIES	1 <sup>st</sup> Mon. in May-Oct. 31	Must be kept in a separate container. Must be dead before being removed from riparian area (immediate vicinity of water body). No daily limit, size, or sex restrictions. No Shellfish/Seaweed license is required. See gear rules page 139.

There is only one native crayfish species in Washington – the signal crayfish (*Pacifastacus leniusculus*). This species can be identified by its uniform brownish coloration, white or light coloration of the claw joint, and the smooth surface of its carapace and claws compared to that of nonnative species. **Native crayfish are the only crayfish that may be removed from the vicinity of the waterbody alive.** If you cannot positively identify your catch as a nonnative species, the daily limit and other restrictions listed above for native crayfish apply.



**How to humanely kill and preserve crayfish**  
There are two important steps to killing a crayfish quickly and humanely. The first is to chill them in ice or ice slurry for 20-30 minutes, and the second is to pierce their head with a knife.

Claw Photos - Julian Olden

## GOOSE BARNACLES **Caution: for Shellfish Safety and Department of Health contact information see pages 128 and 131.**

PUGET SOUND PUBLIC BEACHES		Year-round	No min. size. Daily limit 10 lbs. whole or 5 lbs. barnacle stalks.
PACIFIC OCEAN BEACHES (outside Olympic National Park)		Nov. 1-Mar. 31	No min. size. Daily limit 10 lbs. whole or 5 lbs. barnacle stalks.

## MUSSELS **Same Seasons as CLAMS. Caution: for Shellfish Safety and Department of Health contact information see pages 128 and 131.**

PUGET SOUND PUBLIC BEACHES	ALL SPECIES	Year-round except as noted on the Public Beach List	No min. size. Daily limit 10 lbs. in shell.
PACIFIC OCEAN BEACHES (outside Olympic National Park)	ALL SPECIES	Nov. 1-Mar. 31	No min. size. Daily limit 10 lbs. in shell.
ALL FRESH WATER AREAS	ALL SPECIES	CLOSED	

# Shellfish/Seaweed Species Rules

AREA	SPECIES	SEASON	ADDITIONAL RULES
<b>OCTOPUS</b> Must be caught with hands or instrument which does not penetrate the OCTOPUS, except that octopus taken while angling with hook and line may be retained.			
ALL WATERS except MARINE AREA 12	GIANT PACIFIC	Year-round	No min. size. Daily limit 1. NO CHEMICALS OR IRRITANTS ALLOWED.
MARINE AREA 12	ALL SPECIES	CLOSED	
<b>OYSTERS</b> Caution: for Shellfish Safety and Department of Health contact information see pages 128 and 131. OYSTERS may only be harvested by hand or with a hand-held manually operated prying tool (no hammers, etc.). Each harvester must use a separate container.			
PUGET SOUND PUBLIC BEACHES	ALL SPECIES	Year-round except as noted on the Public Beach List	Min. size 2½" measured across longest distance of shell. Daily limit 18. OYSTERS must be shucked on the beach. OYSTERS consumed on the beach count toward a limit. Leave shells on the same tideland and tide height where they were taken.
<b>RELIC SHELLS</b>			
ALL AREAS	ALL SPECIES	Year-round All beaches	Daily limit is 5 pounds of all species combined. Excludes OYSTER shells.
<b>SAND SHRIMP</b>			
PUBLIC BEACHES	ALL SPECIES	Year-round	No min. size. Daily limit 10 dozen. May be harvested only by hand or by hand-operated suction devices only.
<b>SCALLOPS</b> Caution: for Shellfish Safety and Department of Health contact information see pages 128 and 131.			
ALL WATERS	PINK AND SPINY	Year-round	No min. size. Daily limit 5 qts. or 10 lbs. in shell combined limit for both species. May be harvested only by hand or with a hand-held manually operated prying tool.
	WEATHERVANE	Year-round	Min. size 4". Daily limit 12. Measure across longest distance of the shell.
	ROCK	Year-round	No min. size. Daily limit 6. Hammers or mallets may not be used to harvest rock scallops.
<b>SEA CUCUMBERS</b> Caution: for Shellfish Safety and Department of Health contact information see pages 128 and 131.			
ALL WATERS except MARINE AREA 12	CALIFORNIA	Year-round	No min. size. Daily limit 25. All other SEA CUCUMBERS species are unclassified marine invertebrates. See rules for unclassified marine invertebrates (below).
MARINE AREA 12	ALL SPECIES	CLOSED	
<b>SEA URCHINS</b>			
ALL WATERS	GREEN	Year-round	No min. size. Daily limit 36.
	PURPLE	Year-round	No min. size. Daily limit 18.
	RED	Year-round	No min. size. Daily limit 18.
<b>SEAWEED</b> (Many county and city parks have additional rules or closures. Please check local regulations before harvesting).			
ALL AREAS	ALL SPECIES	Year-round	Daily limit 10 lbs. wet weight. Illegal to harvest any SEAWEED if herring eggs are attached.
All State Park beaches are closed to SEAWEED harvest except Fort Flagler, Fort Ebey, and Fort Worden State Parks, which are open to SEAWEED harvest from April 16-May 15 only. SEAWEED harvesting in State Parks is limited to posted park hours and special State Park rules below:			
* Bull kelp must be cut a minimum of 24" above the bulb and short stemmed kelps must be cut a minimum of 12" above the anchor point. The anchor point must be left in place at all times.			
* Only a knife or similar instrument may be used to harvest SEAWEED. Tearing the plant and use of tined instruments such as rakes or forks is prohibited.			
* Each harvester must use their own container. Multiple limits may not be combined in the same container.			
* Each harvester must use a scale to determine when the harvest limit has been reached. <b>Drying or partial drying prior to weighing is prohibited.</b>			
<b>SHRIMP</b> See pages 138-139 for shrimp harvest and gear rules.			
<b>SQUID</b>			
ALL WATERS except MARINE AREA 12	ALL SPECIES	Year-round	No min. size. Daily limit 5 qts. or 10 lbs., plus up to 5 HUMBOLDT SQUID. Legal gear is a forage fish jig, a maximum of 4 squid lures, forage fish dip net, or a hand dip net. Each harvester must have a separate container.
MARINE AREA 12	ALL SPECIES	CLOSED	
<b>UNCLASSIFIED MARINE INVERTEBRATES</b>			
ALL AREAS	ALL SPECIES	CLOSED	See definition page 19.



# Crab Rules

**CRAB:** For Dungeness Crab, a catch record card (CRC) and a crab endorsement are required in Puget Sound, refer to CRC rules page 16. A \$10.00 penalty will be added to the cost of your next Puget Sound crab endorsement if you fail to either return your cards by mail or report your catch information on the Internet ([https://fishhunt.dfw.wa.gov/wdfw/puget\\_sound\\_crab\\_catch.html](https://fishhunt.dfw.wa.gov/wdfw/puget_sound_crab_catch.html)) by the deadlines printed on the card. Must release all softshell crab (underside of shell flexes with finger pressure - see below). Fishing instruments must not penetrate the shell. It is unlawful to possess crab in the field without retaining the back shell. May not retain Puget Sound KING CRAB, BOX CRAB, or PACIFIC GRACEFUL CRAB.

## Dungeness and Red Rock Crab Daily Limits and Rules:

**Puget Sound** has a daily limit of 5 Dungeness Crab, 6 $\frac{1}{4}$ " minimum size, males only, and in hardshell condition.

**Columbia River** has a daily limit of 12 Dungeness Crab, 5 $\frac{3}{4}$ " minimum size, males only, and in hardshell condition.

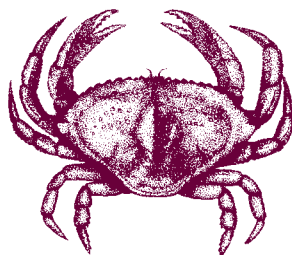
**Pacific Ocean** has a daily limit of 6 Dungeness Crab, 6" minimum size, males only, and in hardshell condition.

**All Areas** have a daily limit of 6 Red Rock Crab, 5" minimum size, of either sex.

Prior to harvesting, see additional crab gear rules on page 139, check the Shellfish Rule Change toll free Hotline, (866) 880-5431, or visit <http://wdfw.wa.gov> for season openings, closures, and restrictions.

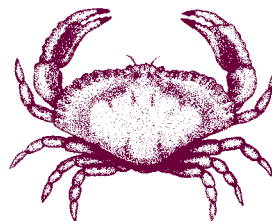
AREA	SPECIES	SEASON / OPENING DAYS AND TIMES / ADDITIONAL RULES
<b>PUGET SOUND</b>  Marine Areas 4 (east of the Bonilla-Tatoosh line), 5, 6, 8-1, 8-2, 9, 10, 11, 12, and 13  Marine Area 7 South (See map next page)  Marine Area 7 North (See map next page)	<b>DUNGENESS and RED ROCK Crab</b>  <i>All DUNGENESS crab kept must be immediately recorded on a catch record card in ink (see page 16).</i>	Open for all fishing methods at <b>7:00 a.m.</b> on the opening date for each Marine Area. Crab gear must be removed from the water during each weekly closure period. Any additional opening dates will be announced in <b>October</b> . Refer to Shellfish Rule Change toll free Hotline, (866) 880-5431, or visit <a href="http://wdfw.wa.gov">http://wdfw.wa.gov</a> .  Open July 1-Sept. 5, <b>Thur. through Mon. only</b> .  Open July 15-Sept 30, <b>Thur. through Mon. only</b> .  Open Aug.15-Sept. 30, <b>Thur. through Mon. only</b> .
<b>COLUMBIA RIVER</b> East of a line from exposed end of north and south jetty upstream to a line between Tongue Point and Rocky Point	<b>DUNGENESS and RED ROCK Crab</b>	Open year-round to all gear.  Crab fishers may fish for crab in Oregon waters under Oregon rules and land into Washington ports of the Columbia River. A resident license from either state is required.
<b>PACIFIC OCEAN</b> Grays Harbor, Willapa Bay, and Marine Areas 1-3 and 4 (west of Bonilla-Tatoosh line)	<b>DUNGENESS and RED ROCK Crab</b>	Open December 1 to September 15 for Pot Gear. Open year-round to other gear.

### Dungeness Crab



White-tipped claws, brownish shell

### Red Rock Crab



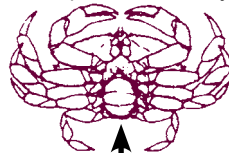
Black-tipped claws, reddish shell, shell much wider than long

## Where and How to Measure for Minimum Size and Check for Shell Hardness

Caliper measurement at the widest part of the shell just in front of rear-most point or tips.



FEMALE  
Wide  
Abdomen



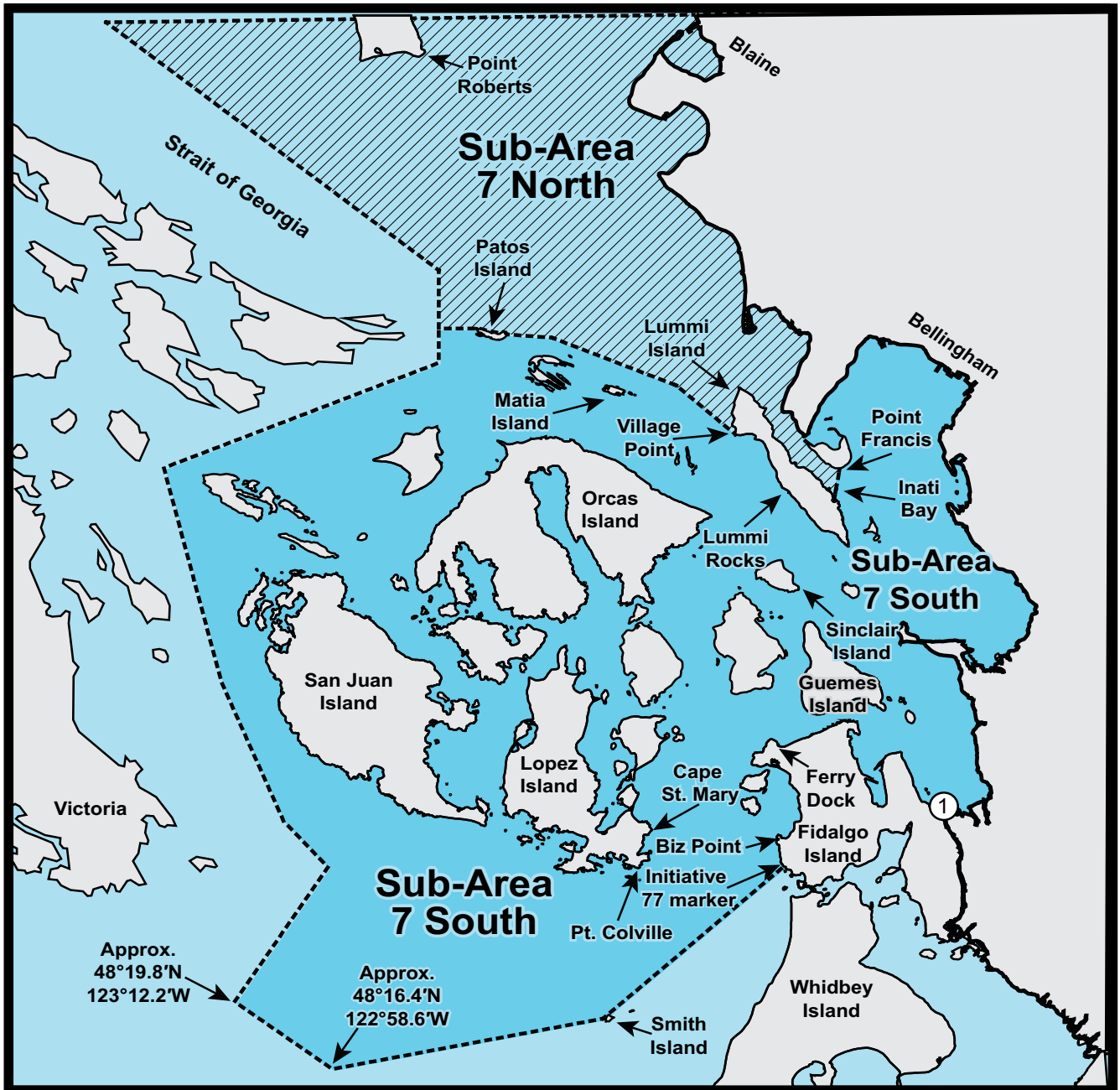
MALE  
Narrow  
Abdomen



Check for soft shell here

Abdomen of female and male Dungeness

# Marine Area 7 Crab Map



- ① Padilla Bay - crab fishing within 25 yards of the Burlington-Northern railroad trestles (located at the north end of the Swinomish Slough) is only allowed from one hour before official sunrise to one hour after official sunset.

# Shrimp Rules

**SHRIMP: Spot** (*Pandalus platyceros*), **Coonstripe** (*P. danae* and *P. hypsinotus*), **Pink** (*P. eous* and *P. jordani*).

## Shrimp Daily Limits and Rules (refer to table below for seasons and open days by Marine Area):

**PUGET SOUND** (Marine Areas 5-13 and Marine Area 4 east of the Bonilla-Tatoosh line).

**1st Saturday in May through May 31:**

DAILY LIMIT OF 80 SHRIMP.

Shrimp heads may be removed while in the field, prior to coming ashore.

The minimum mesh size for shrimp pots is 1" mesh (see gear rules on next page).

**June 1 through October 15:**

DAILY LIMIT OF 10 POUNDS, heads and tails, of all shrimp species combined (maximum of 80 spot shrimp - if open for spot shrimp).

Shrimp heads may be removed, but must be retained while in the field, until ashore and finished fishing for the day.

The minimum mesh size for shrimp pots is 1" mesh, unless the area is closed for spot shrimp, but open for coonstripe and pink shrimp, then the minimum mesh size for shrimp pots is ½" mesh (see gear rules on next page).

**PACIFIC OCEAN** (Marine Areas 1-3 and Marine Area 4 west of the Bonilla-Tatoosh line).

DAILY LIMIT OF 10 POUNDS, heads and tails, of all shrimp species combined (maximum of 80 spot shrimp).

Shrimp heads may be removed, but must be retained while in the field, until ashore and finished fishing for the day.

The minimum mesh size for shrimp pots is 1" mesh (see gear rules on next page).

### ALL AREAS

Each harvester must have a separate container for their catch, either in their possession or identified with their name.

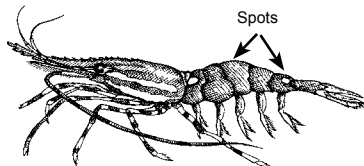
No minimum carapace size.

Maximum of two shrimp pots per person, and no more than four shrimp pots per boat.

Prior to harvesting, check the Shellfish Rule Change toll-free Hotline, (866) 880-5431, or <http://wdfw.wa.gov> for season closures and restrictions.

AREA	SPECIES	SEASON / OPEN DAYS AND TIMES / ADDITIONAL RULES
<b>MARINE AREAS 4</b> (east of Bonilla-Tatoosh line), <b>5, 6, and 13</b> (excluding Shrimp Districts)	ALL SPECIES	<b>Opens May 7 at 7:00 a.m.;</b> SPOT SHRIMP season closes when quota is attained or Sept. 15, whichever comes first, except for Marine Area 13 which closes for SPOT SHRIMP May 31. COONSTRIPE and PINK shrimp season closes Oct. 15. Open daily.
<b>MARINE AREA 7</b>	ALL SPECIES	<b>Opens May 7 at 7:00 a.m.;</b> also open May 11, 13, 14, 25, and 28. Additional dates and times will be announced if sufficient quota remains.
	COONSTRIPE and PINK	June 1-Oct. 15: open daily for COONSTRIPE and PINK shrimp with a 200' maximum fishing depth restriction. All SPOT SHRIMP caught must be returned to the water immediately.
<b>MARINE AREAS 8, 9, 10, and 11</b>	ALL SPECIES	<b>Open May 7, and 11, from 7:00 a.m. to 3:00 p.m.</b> <b>Marine Area 11 open one day only -- May 7.</b> In Marine Area 8-2 only, it is lawful for divers to take shrimp by hand or hand-held device from 7:00 p.m. until midnight on any open day in May. Additional dates and times will be announced if sufficient quota remains.
	COONSTRIPE and PINK	June 1-Oct. 15, Marine Areas 8, 9, and 11 are open daily for COONSTRIPE AND PINK with a 150' maximum fishing depth restriction. All SPOT SHRIMP caught must be returned to the water immediately. Marine Area 10 will remain closed after SPOT SHRIMP quota is taken.
<b>HOOD CANAL SHRIMP DISTRICT</b> (Marine Area 12)	ALL SPECIES	<b>Open May 7, 11, 14, and 25 from 9:00 a.m. to 1:00 p.m.</b> Additional dates and times will be announced if sufficient quota remains.
<b>DISCOVERY BAY SHRIMP DISTRICT</b> (See Marine Area 6 Map)	ALL SPECIES	<b>Open May 7, 11, and 14, from 7:00 a.m. to 3:00 p.m.</b> Additional dates and times will be announced if sufficient quota remains.
<b>PACIFIC OCEAN</b> Marine Areas 1-3 and 4 (west of Bonilla-Tatoosh line)	ALL SPECIES	<b>Year-round.</b> Open daily.

### Spot Shrimp



Spot shrimp (*Pandalus platyceros*) are distinguished by four white spots on the body. Spot shrimp may reach 10" in total length.

### Coonstripe (Dock) Shrimp



Coonstripe or dock shrimp (*Pandalus danae*) are brownish in color with brown lines and spots on the head and tail. This species may grow to 5½" in length.

### Pink Shrimp



Pink shrimp (*Pandalus eous* and *P. jordani*) are small (less than 6") and uniformly pink.

### Coonstripe (Humpback) Shrimp



The coonstripe or humpback shrimp (*Pandalus hypsinotus*) is mottled reddish-brown with some white patches on the head and tail. This species may reach 7½" in length.

# Statewide Gear Rules - Crab, Shrimp and Crawfish

## Caution

Sportfishing rules for crab, shrimp, and crawfish are subject to change based on allocation and/or soft shell conditions. Check the Shellfish Rule Change toll-free Hotline, (866) 880-5431; the WDFW website <http://wdfw.wa.gov>, or watch your local media for potential changes. See individual species listings (crab, page 136; shrimp, page 138; and crawfish, page 134) for seasons and other harvest rules.

## GENERAL GEAR RULES:

May be harvested by hand or dipnet. Hand operated instruments may not penetrate the shell. One star trap, one ring net, or one pot is considered one unit of gear. The maximum number of units of gear that may be fished per person is:

**Puget Sound:** (Marine Area 4, east of the Bonilla-Tatoosh line, and in Marine Areas 5-13).

**Shrimp:** Two pots per person, and no more than 4 shrimp pots may be onboard or fished by any one boat at a time.

**Crab:** Two units of crab gear per person, and no limit on the number of units of crab gear per boat.

**Coastal Waters:** (Marine Areas 1-3 and in Marine Area 4, west of the Bonilla-Tatoosh line). Two units of crab and/or shrimp gear per person. Exception: Columbia River - three units of crab gear per person.

**Freshwater:** Crawfish: Five units of gear per person.

Every shellfish pot, ring net, or star trap left unattended in Washington waters must have its own buoy line and a separate buoy that is permanently and legibly marked with the operator's first name, last name, and permanent address (telephone number is voluntary). It is **ILLEGAL** to set or pull unattended shellfish gear with a buoy that does not have your name on it, and only one name and address may appear on each buoy. Any angler may assist the person whose name is on the buoy while he or she is pulling the pot. No fisher may set, fish, or pull shellfish gear from a vessel, in Catch Record Card Areas 1-13, from one hour after official sunset to one hour before official sunrise. **All shellfish gear must be removed from the water on closed days.**

Buoys must be constructed of durable material (no bleach, antifreeze, detergent bottles, paint cans, etc.) and must be visible on the surface at all times except during extreme tidal conditions. Personal flags and staff, if attached to buoys, can be of any color. Buoy lines must be weighted sufficiently to prevent them from floating on the surface.

All crab, shrimp, and crawfish pots must be equipped with a biodegradable device (rot/escape cord) and shall include one or more of the following:

- (1) securing the pot lid hook or tie down strap with a single loop of cord; or
- (2) sewing a 3" by 5" escape panel in the upper half of pot closed with cord; or
- (3) attaching the pot lid or one pot side (serving as a pot lid) with no more than three single loops of cord.

Cord used must be untreated 100% cotton or other natural fiber no larger than thread size 120 (1/8"). This cord, when attached as described above, must be able to rot away and allow crab, shrimp, crawfish and fish to escape freely if the pot is lost. A derelict crab pot without proper escape cord can attract and kill crabs for years after the pot has been lost.

## CRAB GEAR:

The minimum mesh size for crab pots is 1 1/2", and all pots must have two 4 1/4" minimum inside diameter escape rings in the upper half of the pot, except in the Columbia River where the minimum ring size is 4" inside diameter.

All parts of ring nets and star traps must lie flat on the sea bottom and may not restrict free movement of crab until lifted. Shellfish pots must be covered by water at all times while being fished.

Crab pots must not exceed 13 cubic feet.

All crab gear buoys must be half red and half white in color, and both colors need to be visible when fishing.

## SHRIMP GEAR:

Pots must be constructed of either flexible or rigid mesh material (no liners allowed).

Entrance tunnels can be made of any size mesh material but must be located on the sides of the pot. The sum of the maximum tunnel widths must not exceed one-half the perimeter of the bottom of the pot.

Shrimp pots must not exceed 10 feet in perimeter and 18" in height.

All shrimp pot buoys must be yellow in color.

## SHRIMP POT MESH SIZE:

### 1" Minimum Mesh Size

A 7/8" square peg must be able to pass through each mesh opening – see diagram, except for flexible (web) mesh pots, where the opening must be a minimum of 1 3/4" stretch measure.

### Puget Sound:

Required for all shrimp pots during the month of May. Required in all areas open for spot shrimp after June 1st.

### Pacific Ocean:

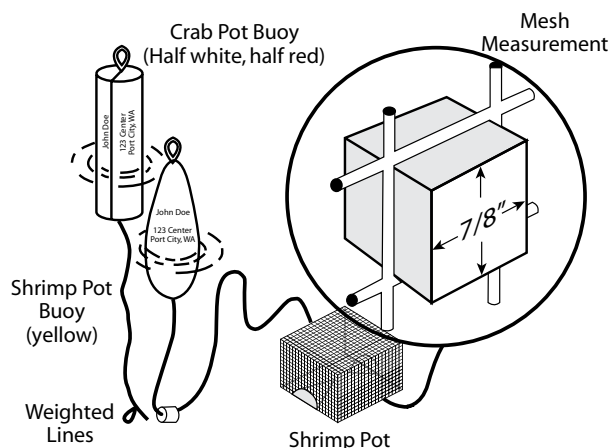
Required year-round.

### 1/2" Minimum Mesh Size

A 3/8" square peg must be able to pass through each mesh opening, except for flexible (web) mesh pots, where the opening must be a minimum of 1 1/2" stretch measure.

### Puget Sound:

Allowed after June 1st in any area closed for spot shrimp, but open for coonstripe and pink shrimp.



## LOST GEAR:

Do not attempt to salvage lost shellfish gear in Hood Canal without first getting a permit from the WDFW Enforcement Program - (360) 902-2936. To report lost shellfish gear, call WDFW toll-free (855) 542-3935. If we can recover your gear and it is properly identified, we will attempt to return it.

Not all shellfish gear sold in Washington meet the specifications shown on this page. Verify that your pot meets these requirements prior to use. 139



# STOP



Milfoil

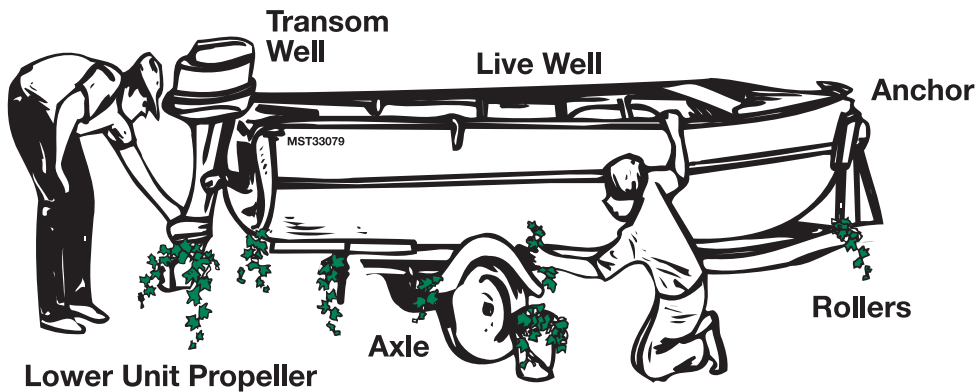


Zebra Mussel

It is **ILLEGAL** to transport or spread  
**Aquatic Invasive Species!**

Before Launching & Before Leaving

**You Must Remove ALL**  
**Plants & Animals from Watercraft, Trailer and Gear.**  
**You Must Drain ALL**  
**Water from Fish/Live Wells, Holds and Bilges.**



Unlawful to Transport Aquatic Plants - R.C.W. 77.15.290  
Unlawful Use of Prohibited Aquatic Animal Species - R.C.W. 77.15.253  
Unlawful Release of Fish, Shellfish or Wildlife - R.C.W. 77.15.250

To obtain information on free boat inspections, Report a sighting or  
Find out more about Aquatic Invasive Species:  
Call **1-888-WDFW-AIS (933-9247)** or go to **www.WDFW.WA.GOV**



**STOP AQUATIC  
HITCHHIKERS!**

Prevent the transport of nuisance species.  
Clean all recreational equipment.  
[www.ProtectYourWater.net](http://www.ProtectYourWater.net)