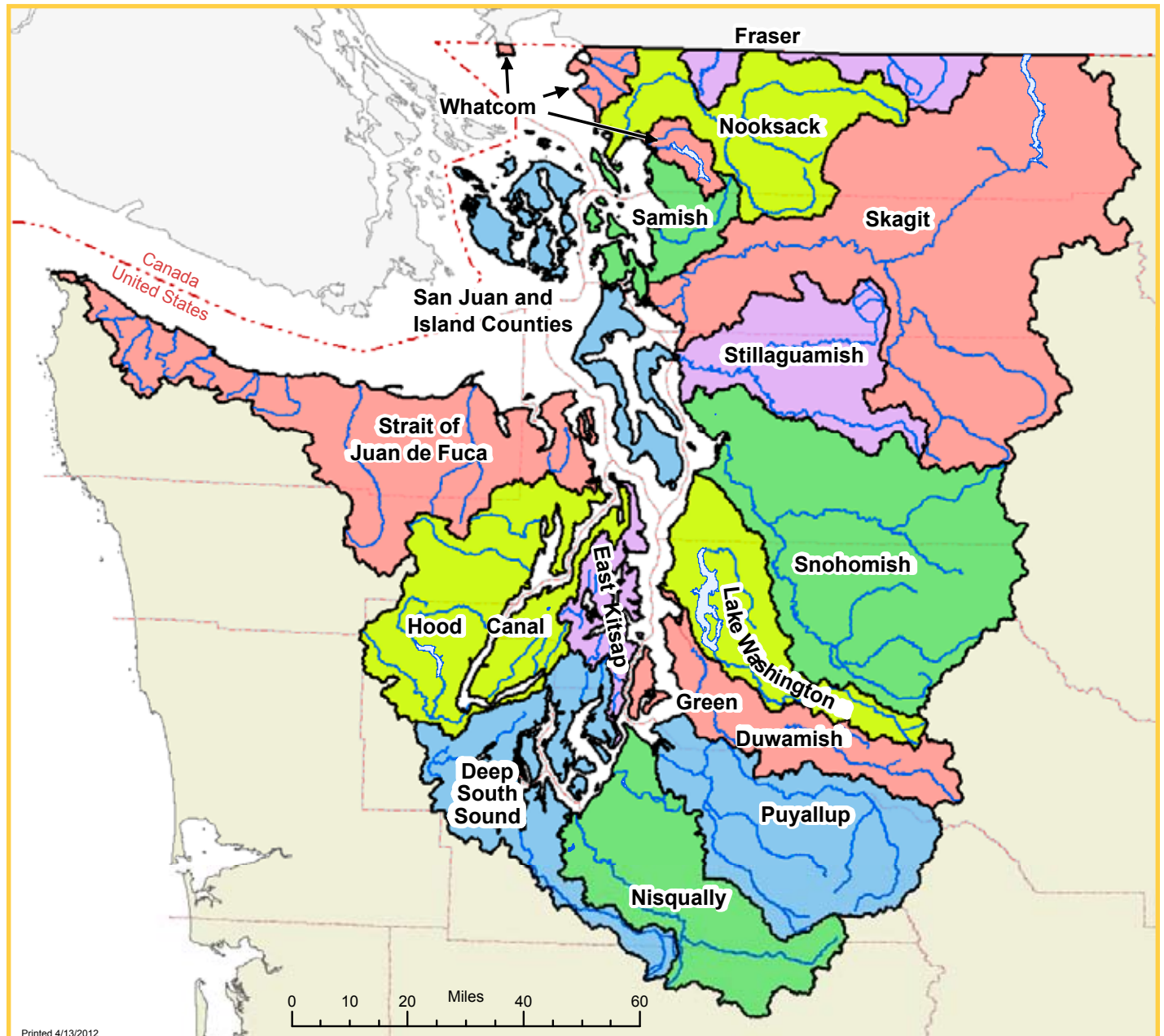


Puget Sound and Strait Rivers - Special Rules

With various fish populations across the state being listed under the Endangered Species Act, (most recently Puget Sound steelhead) WDFW must provide as much protection as possible for all life stages of these populations, in particular for rearing juveniles. Currently, the standard stream rule opens rivers, streams, and beaver ponds to fishing for game fish from the first Saturday in June – October 31, with an 8" minimum size, 2 fish/day limit. Consequently, much of the juvenile rearing habitat for resident trout and Dolly Varden and anadromous salmon, steelhead, cutthroat, and Bull Trout is currently open for fishing. As a result, these juvenile salmonids are at risk of being incidentally caught and may not survive being handled and released, especially if bait is used.

In 2010 we adopted a new management strategy that offers additional protection to stocks in streams draining into Puget Sound or the Strait of Juan de Fuca. The basic rule in these waters is that all rivers, streams, and beaver ponds are closed to fishing unless they are listed in the following tables in the Puget Sound and Strait Rivers section of the pamphlet (see pages 37-52). These tables detail ALL of the fishing opportunity in these drainages. Areas open to fisheries are presented by river system unless the waters drain directly to salt water. All other waters in these drainages are closed to fishing. We have provided a map (below) of these watersheds to get you started on locating an area where you would like to fish. There is also an alphabetical list of open areas (see following page and special rules). Remaining westside rivers and all eastside rivers are listed in the conventional format and still fall under the statewide seasons, unless otherwise noted.



Alphabetical Listings

Stream	Page #	Stream	Page #	Stream	Page #
All Creek (Skagit/Snohomish Co.)	40	Green (Duwamish) River & tributaries (King Co.)	45	Rendsland Creek (Mason Co.)	49
Alma Creek (Skagit/Whatcom Co.)	40	Greenwater River (King/Pierce Co.)	46	Ripley Creek (Jefferson Co.)	51
Anderson Creek (Kitsap Co.)	49	Groves Creek (Kitsap Co.)	49	Rocky Brook Creek (Jefferson Co.)	50
Anderson Creek (Whatcom Co.)	38	Hamma Hamma River (Mason Co.)	50	Rocky Creek (Pierce/Kitsap Co.)	48
Bacon Creek (Skagit/Whatcom Co.)	40	Hansen Creek & tributaries (Skagit Co.)	39	Rocky Creek (Skagit Co.)	39
Bacus Creek (Skagit Co.)	39	Harrison Slough (Skagit Co.)	39	Ross Lake tributaries (Whatcom Co.)	40
Bainbridge Island Streams (Kitsap Co.)	49	Hilt Creek (Skagit/Snohomish Co.)	40	Salmonberry Creek (Kitsap Co.)	49
Baker River & tributaries (Skagit Co.)	40	Hoko River (Clallam Co.)	52	Salt Creek (Clallam Co.)	52
Barker Creek (Kitsap Co.)	49	Howe Creek (Jefferson Co.)	51	Samish River (Skagit/Whatcom Co.)	38
Beaver Creek (Pierce Co.)	47	Hutchinson Creek (Whatcom Co.)	38	Sammamish River (Slough) (King Co.)	44
Bertrand Creek (Whatcom Co.)	37	Hylebos Creek (Pierce Co.)	46	Sauk River (Skagit/Snohomish Co.)	40
Big Bear Creek (Snohomish/King Co.)	45	Illabot Creek (Skagit Co.)	39	Sauk River, North Fork (Skagit/Snohomish Co.)	40
Big Beaver Creek & tributaries (Whatcom Co.)	40	Illehee Creek (Kitsap Co.)	49	Sauk River, South Fork (Snohomish Co.)	40
Big Beef Creek (Kitsap Co.)	49	Issaquah Creek (King Co.)	45	Scatter Creek (King Co.)	46
Big Creek (Skagit/Snohomish Co.)	40	Jackman Creek (Skagit Co.)	39	Schneider Creek (Thurston Co.)	48
Big Mission Creek (Mason Co.)	49	Jefferson Creek (Mason Co.)	50	Sekiu River (Clallam Co.)	52
Big Scandia Creek (Kitsap Co.)	49	Jimmycomelately Creek (Clallam Co.)	51	Shelton Creek (Mason Co.)	48
Black Creek (Snohomish Co.)	42	Johns Creek (Mason Co.)	48	Sherwood Creek (Mason Co.)	48
Black Lake Ditch (Thurston Co.)	48	Johnson Creek (Whatcom Co.)	37	Shine Creek (Jefferson Co.)	51
Blackjack Creek (Kitsap Co.)	49	Jones Creek (Skagit Co.)	39	Siebert Creek (Clallam Co.)	51
Boise Creek (King Co.)	46	Jordan Creek (Skagit Co.)	41	Silesia Creek (Whatcom Co.)	37
Boulder Creek (Skagit Co.)	41	Jorsted Creek (Mason Co.)	50	Silver Creek (Skagit/Whatcom Co.)	39
Boulder River (Snohomish Co.)	41	Kelsey Creek (King Co.)	45	Silver Creek (Whatcom Co.)	37
Boxley Creek (King Co.)	44	Kendall Creek (Whatcom Co.)	38	Skagit River (Skagit/Whatcom Co.)	39
Buck Creek (Skagit/Snohomish Co.)	40	Kennedy Creek (Thurston Co.)	48	Skokomish River (Mason Co.)	50
Burley Creek (Kitsap Co.)	49	Kimball Creek (King Co.)	44	Skokomish River, North Fork (Mason Co.)	50
Cadet Creek (Snohomish Co.)	40	Kindy Creek (Skagit Co.)	41	Skokomish River, South Fork (Mason Co.)	50
California Creek (Whatcom Co.)	37	Kings Creek (Pierce Co.)	47	Skookum Creek (Mason Co.)	48
Camp Creek (Snohomish Co.)	40	Kitsap Creek (Kitsap Co.)	49	Skykomish River (Snohomish Co.)	42
Campbell Creek (Mason Co.)	48	Ladder Creek (Skagit/Whatcom Co.)	40	Skykomish River, North Fork & tributaries (Snohomish Co.)	43
Canyon Creek (Skagit/Snohomish Co.)	40	Lake Cavanaugh tributaries (Snohomish Co.)	41	Skykomish River, South Fork & tributaries (King/Snohomish)	43
Canyon Creek (Snohomish Co.)	42	LeBar Creek (Mason Co.)	50	Sloan Creek (Snohomish Co.)	40
Canyon Creek (Whatcom Co.)	38	Leland Creek (Jefferson Co.)	51	Smith Creek (Whatcom Co.)	38
Carbon River (Pierce Co.)	46	Lena Creek (Mason Co.)	50	Snohomish River & tributaries (Snohomish Co.)	42
Cascade River & forks (Skagit Co.)	41	Lillwaup River (Mason Co.)	50	Snoqualmie River (King Co.)	43
Cayada Creek (Pierce Co.)	47	Lime Creek (Skagit/Snohomish Co.)	40	Snoqualmie River tributaries (King Co.)	44
Cedar Creek (Mason Co.)	50	Little Bear Creek (Snohomish/King Co.)	45	Snoqualmie River, Middle Fork (King Co.)	44
Cedar River (King Co.)	45	Little Hoko River (Clallam Co.)	52	Snoqualmie River, North Fork (King Co.)	44
Chambers Creek (Pierce Co.)	47	Little Mission Creek (Mason Co.)	49	Snoqualmie River, South Fork (King Co.)	44
Channel Creek (Whatcom Co.)	40	Little Nisqually River (Lewis Co.)	47	Soos Creek (King Co.)	46
Chaplain Creek & tributaries (Snohomish Co.)	42	Little Quilcene River (Jefferson Co.)	51	South Prairie Creek (Pierce Co.)	47
Chiliwack River & tributaries (Whatcom Co.)	37	Little Scandia Creek (Kitsap Co.)	49	Squalicum Creek (Whatcom Co.)	37
Chimacum Creek (Jefferson Co.)	51	Ludlow Creek (Jefferson Co.)	51	Squire Creek (Snohomish Co.)	41
Church Creek (Mason Co.)	50	Lyle Creek (Pierce Co.)	46	Stetattle Creek (Whatcom Co.)	40
Clallam River (Clallam Co.)	52	Lyre River (Clallam Co.)	52	Stillaguamish River & sloughs (Snohomish Co.)	41
Clarks Creek (Pierce Co.)	46	Malaney Creek (Mason Co.)	48	Stillaguamish River, North Fork & tributaries (Snohomish Co.)	41
Clear Creek (Kitsap Co.)	49	Maple Creek (Whatcom Co.)	38	Stillaguamish River, South Fork (Snohomish Co.)	42
Clear Creek (Snohomish Co.)	40	Marble Creek (Skagit Co.)	41	Stimson Creek (Mason Co.)	49
Clearwater River (Pierce Co.)	46	Marsh Creek & tributaries (Snohomish Co.)	42	Straight Creek (Skagit/Snohomish Co.)	40
Clover Creek & tributaries (Pierce Co.)	47	May Creek (King Co.)	45	Stuck (see White) River (Pierce Co.)	46
Coal Creek (King Co.)	44	McAllister Creek (Thurston Co.)	47	Suiattle River (Skagit Co.)	40
Copper Creek (Snohomish Co.)	40	McDonald Creek (Clallam Co.)	51	Sulphur Creek (Skagit/Snohomish Co.)	40
Coulter Creek (Kitsap/Mason Co.)	48	McLane Creek (Thurston Co.)	48	Sultan River (Snohomish Co.)	42
Cranberry Creek (Mason Co.)	48	Milk Creek (Skagit/Snohomish Co.)	40	Sumas River & tributaries (Whatcom Co.)	37
Crescent Creek (Kitsap Co.)	49	Mill Creek (Mason Co.)	48	Swamp Creek (Snohomish/King Co.)	44
Dakota Creek (Whatcom Co.)	37	Mineral Creek (Lewis Co.)	47	Tahuya River (Mason Co.)	49
Dan's Creek (Skagit/Snohomish Co.)	40	Minter Creek (Pierce/Kitsap Co.)	48	Tanwax Creek (Thurston Co.)	47
Deep Creek (Clallam Co.)	52	Morse Creek (Clallam Co.)	51	Tarboe Creek (Jefferson Co.)	51
Deer Creek (Mason Co.)	48	New Pond Creek (Pierce Co.)	47	Taylor River (King Co.)	44
Deschutes River (Thurston Co.)	48	Newhalem Creek (Skagit/Whatcom Co.)	40	Ten Mile Creek (Whatcom Co.)	37
Dewatto River (Mason Co.)	49	Nisqually River & tributaries (Pierce Co.)	47	Tenas Creek (Skagit/Snohomish Co.)	40
Diobsud Creek (Skagit/Whatcom Co.)	40	Nookachamps Creek & tributaries (Skagit Co.)	39	Terrell Creek (Whatcom Co.)	37
Dogfish Creek (Kitsap Co.)	49	Nooksack River (Whatcom Co.)	37	Thomas Creek (Skagit/Whatcom Co.)	39
Donovan Creek (Jefferson Co.)	51	Nooksack River, Middle Fork & tributaries (Whatcom Co.)	38	Thorndyke Creek (Jefferson Co.)	51
Dosewallips River (Jefferson Co.)	50	Nooksack River, North Fork & tributaries (Whatcom Co.)	38	Thornton Creek (King Co.)	44
Downey Creek (Skagit/Snohomish Co.)	40	Nooksack River, South Fork (Skagit/Whatcom Co.)	38	Thomton Creek (Skagit/Whatcom Co.)	40
Duckabush River (Jefferson Co.)	50	North Creek (Snohomish/King Co.)	44	Tibbets Creek (King Co.)	45
Dungeness River (Clallam Co.)	51	Ohop Creek (Pierce Co.)	47	Tokol Creek & tributaries (King Co.)	44
East Twin River (Clallam Co.)	52	Olalla Creek (Kitsap Co.)	49	Tolt River (King Co.)	43
Eaton Creek (Thurston Co.)	48	Olney Creek & tributaries (Snohomish Co.)	43	Tolt River, North Fork (King Co.)	44
Eglon Creek (Kitsap Co.)	49	Olson Creek (Skagit Co.)	39	Tolt River, South Fork (King Co.)	44
Elliott Creek (Snohomish Co.)	40	Owl Creek (Snohomish Co.)	40	Tye River & tributaries (King Co.)	43
Elwha River & tributaries (Clallam Co.)	52	Peabody Creek (Clallam Co.)	51	Uncle John Creek (Mason Co.)	48
Evans Creek (Pierce Co.)	47	Penny Creek (Jefferson Co.)	51	Union River (Mason Co.)	49
Falls Creek (Snohomish Co.)	40	Percival Creek (Thurston Co.)	48	Valley Creek (Clallam Co.)	52
Fisher Slough (Skagit Co.)	39	Perry Creek (Thurston Co.)	48	Voights Creek (Pierce Co.)	47
Fishtrap Creek (Whatcom Co.)	37	Pilchuck Creek & tributaries (Snohomish Co.)	41	Wallace River (Snohomish Co.)	42
Fiske Creek (Pierce Co.)	47	Pilchuck River (Snohomish Co.)	42	Washington Creek (Mason Co.)	50
Found Creek (Skagit Co.)	41	Pine Creek (Mason Co.)	50	West Twin River (Clallam Co.)	52
Fox Creek (Pierce Co.)	47	Pratt River (King Co.)	44	Whatcom Creek (Whatcom Co.)	37
Friday Creek (Skagit/Whatcom Co.)	39	Pugh Creek (Snohomish Co.)	40	White (Stuck) River (Pierce Co.)	46
Fulton Creek (Mason Co.)	50	Puyallup River (Pierce Co.)	46	White Creek (Skagit/Snohomish Co.)	40
Gale Creek (Pierce Co.)	47	Pyramid Creek (King Co.)	46	Whitechuck River (Snohomish Co.)	40
Gamble Creek (Kitsap Co.)	49	Pysht River (Clallam Co.)	52	Wilkeson Creek (Pierce Co.)	47
Goldsborough Creek (Mason Co.)	48	Quilcene River (Jefferson Co.)	51	Woodard Creek (Thurston Co.)	48
Goodell Creek (Skagit/Whatcom Co.)	40	Racehorse Creek (Whatcom Co.)	38	Woodland Creek (Thurston Co.)	48
Grade Creek (Skagit/Snohomish Co.)	40	Raging River (King Co.)	44	Woods Creek, East Fork & tributaries (Snohomish Co.)	42
Gray Wolf River (Clallam Co.)	51	Red Creek (King Co.)	46	Youngs Creek & tributaries (Snohomish Co.)	42

Puget Sound and Strait Rivers - Special Rules

(listed from north to south, then Hood Canal and Strait)

Fraser River Tributaries

WATER	SPECIES	SEASON	ADDITIONAL RULES
SUMAS RIVER (Whatcom Co.) including all tributaries except Johnson Creek	All Game Fish	First Sat. in June-Oct. 31	Statewide min. size/daily limit.
Johnson Creek (Whatcom Co.) from NP Railroad tracks to Lawson St. footbridge in Sumas	Juvenile anglers only (under 15 years old).		
	All Game Fish	First Sat. in June-Oct. 31	Statewide min. size/daily limit.
SILESIA CREEK (Whatcom Co.)	All Game Fish	First Sat. in June-Oct. 31	Statewide min. size/daily limit.
CHILIWACK RIVER (Whatcom Co.) including all tributaries and their tributaries	All Game Fish	First Sat. in June-Oct. 31	Statewide min. size/daily limit.

Whatcom Independents

WATER	SPECIES	SEASON	ADDITIONAL RULES
DAKOTA CREEK (Whatcom Co.) from mouth to Giles Rd. Bridge (724)	Mouth is defined as a line from outermost headland on south bank to the house at 1285 Runge Ave., Blaine, WA (¼ mile downstream of Blaine Rd. Bridge).		
	All Game Fish	First Sat. in June-Oct. 31	Statewide min. size/daily limit. Selective gear rules.
	SALMON	Oct. 1-Dec. 31	Min. size 12". Daily limit 2. Release wild CHINOOK.
CALIFORNIA CREEK (Whatcom Co.) (710)	All Game Fish	First Sat. in June-Oct. 31	Statewide min. size/daily limit. Selective gear rules.
TERRELL CREEK (Whatcom Co.)	All Game Fish	First Sat. in June-Oct. 31	Statewide min. size/daily limit. Selective gear rules.
SQUALICUM CREEK (Whatcom Co.)	All Game Fish	First Sat. in June-Oct. 31	Statewide min. size/daily limit. Selective gear rules.
WHATCOM CREEK (Whatcom Co.) from mouth to yellow markers below foot bridge below Dupont St. in Bellingham (884)	The mouth is defined by a line from the flashing light at the southwest end of the Port of Bellingham North Terminal to the southernmost point of the dike surrounding the Georgia Pacific treatment pond. ALL SPECIES - Aug. 1-Dec. 31: night closure and anti-snagging rule.		
	TROUT	First Sat. in June-Last day in Feb.	Min. size 14". Daily limit 2.
	Other Game Fish	First Sat. in June-Last day in Feb.	Statewide min. size/daily limit.
	SALMON	Aug. 1-Dec. 31	Min. size 12". Daily limit 6. Up to 2 adults may be retained.
	Anglers fishing lawfully, within 50 yards of the Bellingham Technical College Hatchery Collection Tube, and on the hatchery side of the creek, who hook and land CHUM, may remove them from the water and immediately place them unharmed into the Hatchery Collection Tube.		
from foot bridge below Dupont St. in Bellingham to Woburn St. Bridge (884)	ALL SPECIES - Aug. 1-Dec. 31: night closure and anti-snagging rule.		
	TROUT	First Sat. in June-Last day in Feb.	Min. size 14". Daily limit 2.
	Other Game Fish	First Sat. in June-Last day in Feb.	Statewide min. size/daily limit.
from stone bridge at Whatcom Falls Park to Lake Whatcom (884)	Juvenile anglers only (under 15 years old). ALL SPECIES - Aug. 1-Oct. 31: night closure and anti-snagging rule.		
	TROUT	4th Sat. in Apr.-Oct. 31	No min. size. Daily limit 2.
	Other Game Fish	4th Sat. in Apr.-Oct. 31	Statewide min. size/daily limit.

Nooksack

WATER	SPECIES	SEASON	ADDITIONAL RULES
NOOKSACK RIVER (Whatcom Co.) from Lummi Indian reservation boundary to Hwy. 544 Bridge at Everson (794)	ALL SPECIES - First Sat. in June-Nov. 30: night closure and anti-snagging rule.		
	TROUT	First Sat. in June-Jan. 31	Min. size 14". Daily limit 2.
	Other Game Fish	First Sat. in June-Jan. 31	Statewide min. size/daily limit.
	SALMON	Sept. 1-Dec. 31	Min. size 12". Daily limit 2 plus 2 additional COHO. Sept. 1-Sept. 30: Release wild CHINOOK.
Fishtrap Creek (Whatcom Co.) from Koh Rd. to Bender Rd.	Juvenile anglers only (under 15 years old).		
	All Game Fish	June 1-Oct. 31	Statewide min. size/daily limit.
Silver, Ten Mile, and Bertrand creeks (Whatcom Co.)	All Game Fish	First Sat. in June-Oct. 31	Statewide min. size/daily limit. Selective Gear rules.

Puget Sound and Strait Rivers not listed in this section are closed to fishing.

Nooksack (continued)

WATER	SPECIES	SEASON	ADDITIONAL RULES
NOOKSACK RIVER (Whatcom Co.) from Hwy. 544 Bridge at Everson to yellow marker at the FFA high school barn in Deming (794)	ALL SPECIES - <i>First Sat. in June-Nov. 30: night closure and anti-snagging rule.</i>		
	TROUT	First Sat. in June-Jan. 31	Min. size 14". Daily limit 2.
	Other Game Fish	First Sat. in June-Jan. 31	Statewide min. size/daily limit.
Smith and Anderson creeks (Whatcom Co.)	SALMON	Sept. 1-Dec. 31	Min. size 12". Daily limit 2 plus 2 additional COHO. Sept. 1-Sept. 30: Release wild CHINOOK.
	All Game Fish	First Sat. in June-Oct. 31	Statewide min. size/daily limit. Selective Gear rules.
NOOKSACK RIVER (Whatcom Co.) from yellow marker at the FFA high school barn in Deming to confluence of North and South forks (794)	ALL SPECIES - <i>Oct. 1-Nov. 30: night closure and anti-snagging rule.</i>		
	TROUT	Oct. 1-Jan. 31	Min. size 14". Daily limit 2.
	Other Game Fish	Oct. 1-Jan. 31	Statewide min. size/daily limit.
NOOKSACK RIVER, NORTH FORK (Whatcom Co.) from mouth to Maple Creek (790)	SALMON	Oct. 1-Dec. 31	Min. size 12". Daily limit 2 plus 2 additional COHO.
	All Game Fish	First Sat. in June-Oct. 31	Statewide min. size/daily limit. Selective gear rules.
Racehorse Creek, Kendall Creek above hatchery grounds, and Maple Creek (Whatcom Co.)	ALL SPECIES - <i>First Sat. in June-Nov. 30: night closure and anti-snagging rule. Nov. 1-Feb. 15: motors prohibited.</i>		
	TROUT	First Sat. in June-Feb. 15	Min. size 14". Daily limit 2.
	Other Game Fish	First Sat. in June-Feb. 15	Statewide min. size/daily limit.
NOOKSACK RIVER, NORTH FORK (Whatcom Co.) from mouth to Maple Creek to Nooksack Falls (790)	SALMON	Oct. 1-Nov. 30	Min. size 12". Daily limit 2 plus 2 additional COHO.
	All Game Fish	First Sat. in June-Oct. 31	Statewide min. size/daily limit. Selective gear rules.
Canyon Creek (Whatcom Co.) from Canyon Creek Rd. Bridge upstream	ALL SPECIES - <i>Nov. 1-Jan. 31: motors prohibited.</i>		
	TROUT	First Sat. in June-Jan. 31	Min. size 14". Daily limit 2. Selective gear rules.
	Other Game Fish	First Sat. in June-Jan. 31	Statewide min. size/daily limit. Selective gear rules.
NOOKSACK RIVER, NORTH FORK (Whatcom Co.) upstream of Nooksack Falls including all tributaries and their tributaries (790)	All Game Fish	First Sat. in June-Oct. 31	Statewide min. size/daily limit. Selective gear rules.
NOOKSACK RIVER, MIDDLE FORK (Whatcom Co.) mouth to City of Bellingham diversion Dam (788)	ALL SPECIES - <i>Nov. 1-Jan. 31: motors prohibited.</i>		
	TROUT	First Sat. in June-Jan. 31	Min. size 14". Daily limit 2. Selective gear rules.
	Other Game Fish	First Sat. in June-Jan. 31	Statewide min. size/daily limit. Selective gear rules.
from diversion dam upstream, including all tributaries and their tributaries (788)	All Game Fish	First Sat. in June-Oct. 31	Statewide min. size/daily limit.
NOOKSACK RIVER, SOUTH FORK (Skagit/Whatcom Co.) from mouth to Skookum Creek (792)	ALL SPECIES - <i>First Sat. in June-Nov. 30: night closure. First Sat. in June-Jan. 31: selective gear rules. Internal combustion motors prohibited.</i>		
	All Game Fish	First Sat. in June-Jan. 31	Catch-and-release except up to 2 hatchery STEELHEAD may be retained.
	SALMON	Oct. 1-Dec. 31	Min. size 12". Daily limit 2 plus 2 additional COHO. Release CHUM.
Hutchinson Creek (Whatcom Co.)	ALL SPECIES - <i>selective gear rules. Internal combustion motors prohibited.</i>		
	TROUT	First Sat. in June-Oct. 31	Min size 14". Daily limit 2.
	Other Game Fish	First Sat. in June-Oct. 31	Statewide min. size/daily limit.

San Juan and Island Counties

WATER	SPECIES	SEASON	ADDITIONAL RULES
NO OPEN WATERS IN THESE COUNTIES			

Samish

WATER	SPECIES	SEASON	ADDITIONAL RULES
SAMISH RIVER (Skagit/Whatcom Co.) from mouth to Farm-to-Market Rd. Bridge (816)	ALL SPECIES - <i>Aug. 1-Nov. 30: night closure, only one single-point hook allowed, and bait or lure must be suspended below a float. We each must clean up after ourselves and pets. Refer to Human and Pet Waste Advisory (page 10).</i>		
	TROUT	First Sat. in June-Nov. 30	Min. size 14". Daily limit 2.
	Other Game Fish	First Sat. in June-Nov. 30	Statewide min. size/daily limit.
	SALMON	Aug. 1-Nov. 30	Min. size 12". Daily limit 2. Release wild COHO. Only fish hooked inside the mouth may be retained. Anglers must retain first 2 SALMON if lawful to do so, and stop fishing.
	All Game Fish	Dec. 1-Dec. 31	Catch-and-release except up to 2 hatchery STEELHEAD may be retained. Selective gear rules.

(continued on next page)

Samish (continued)

WATER	SPECIES	SEASON	ADDITIONAL RULES
SAMISH RIVER (cont.) from Farm-to-Market Rd. Bridge to I-5 Bridge	ALL SPECIES - Aug. 1-Nov. 30: <i>night closure and only one single-point hook allowed. We each must clean up after ourselves and pets. Refer to Human and Pet Waste Advisory (page 10).</i>		
	TROUT	First Sat. in June-Nov. 30	Min. size 14". Daily limit 2.
	Other Game Fish	First Sat. in June-Nov. 30	Statewide min. size/daily limit.
	SALMON	Aug. 1-Nov. 30	Min. size 12". Daily limit 2. Release wild COHO. Only fish hooked inside the mouth may be retained. Anglers must retain first 2 SALMON if lawful to do so, and stop fishing.
	All Game Fish	Dec. 1-Dec. 31	Catch-and-release except up to 2 hatchery STEELHEAD may be retained. Selective gear rules.
from I-5 Bridge to Hickson Bridge (816)	CLOSED WATERS - Sept. 1-Nov. 30 <i>from I-5 Bridge to Old Hwy. 99 Bridge.</i>		
	CLOSED WATERS - <i>from Old Hwy. 99 Bridge to WDFW hatchery rack.</i>		
	All Game Fish	First Sat. in June-Nov. 30	Catch-and-release except up to 2 hatchery STEELHEAD may be retained. Selective gear rules.
Friday, Silver, and Thomas creeks (Skagit/Whatcom Co.)	All Game Fish	First Sat. in June-Oct. 31	Statewide min. size/daily limit. Selective gear rules.
SAMISH RIVER from Hickson Bridge upstream (816)	All Game Fish	First Sat. in June-Oct. 31	Statewide min. size/daily limit. Selective gear rules.

Skagit

WATER	SPECIES	SEASON	ADDITIONAL RULES
SKAGIT RIVER (Skagit/Whatcom Co.) <i>The mouth is defined by a line projected from terminus (end) of the jetty with McGlenn Island to the white monument on east end of Ika Island, then to the white monument on east end of Craft Island, then to the white monument near corner of the levee on the west side of Dry Slough, and then to the white monument on the east side of Tom Moore Slough.</i> from mouth to Hwy. 536 at Mt. Vernon (Memorial Hwy. Bridge) (830)	Dolly Varden/Bull Trout	June 1-Jan. 31	Min. size 20". May be retained as part of TROUT daily limit.
	All Other TROUT	June 1-Jan. 31	Min. size 14". Daily limit 2.
	Other Game Fish	June 1-Jan. 31	Statewide min. size/daily limit.
	SALMON	Sept. 1-Dec. 31	Min. size 12". Daily limit 2. Release CHINOOK and CHUM.
FISHER SLOUGH (Hill Ditch) mouth to I-5 Bridge (Skagit Co.) (830)	TROUT	First Sat. in June-Oct. 31	Min. size 14". Daily limit 2.
	Other Game Fish	First Sat. in June-Oct. 31	Statewide min. size/daily limit.
SKAGIT RIVER (Skagit Co.) from Hwy. 536 at Mt. Vernon (Memorial Hwy. Bridge) to mouth of Gilligan Creek (830)	ALL SPECIES - June 16-Nov. 30: <i>night closure and anti-snagging rule.</i>		
	Dolly Varden/Bull Trout	June 1-Jan. 31	Min. size 20". May be retained as part of TROUT daily limit.
	All Other TROUT	June 1-Jan. 31	Min. size 14". Daily limit 2.
	Other Game Fish	June 1-Jan. 31	Statewide min. size/daily limit.
	SALMON	June 16-July 15	Min. size 12". Daily limit 3 SOCKEYE only.
	SALMON	Sept. 1-Dec. 31	Min. size 12". Daily limit 2. Release CHINOOK and CHUM.
Nookachamps Creek (Skagit Co.) and all tributaries and their tributaries	All Game Fish	First Sat. in June-Oct. 31	Statewide min. size/daily limit. Selective gear rules.
Hansen Creek (Skagit Co.) and all tributaries and their tributaries	All Game Fish	First Sat. in June-Oct. 31	Statewide min. size/daily limit. Selective gear rules.
Jones Creek (Skagit Co.)	All Game Fish	First Sat. in June-Oct. 31	Statewide min. size/daily limit. Selective gear rules.
SKAGIT RIVER (Skagit Co.) from mouth of Gilligan Creek to the Dalles Bridge at Concrete (830)	ALL SPECIES - July 1-Nov. 30: <i>night closure and anti-snagging rule.</i>		
	Dolly Varden/Bull Trout	June 1-Jan. 31	Min. size 20". May be retained as part of TROUT daily limit.
	All Other TROUT	June 1-Jan. 31	Min. size 14". Daily limit 2.
	Other Game Fish	June 1-Jan. 31	Statewide min. size/daily limit.
	SALMON	Sept. 16-Dec. 31	Min. size 12". Daily limit 2. Release CHINOOK and CHUM.
from the Dalles Bridge at Concrete to Hwy. 530 Bridge at Rockport (830)	CLOSED WATERS - June 1-Aug. 31: <i>closed between a line projected across the thread of the river 200' above the east bank of the Baker River and a line projected across the thread of the river 200' below the west bank of the Baker River.</i>		
	ALL SPECIES - July 1-Nov. 30: <i>night closure and anti-snagging rule.</i>		
	Dolly Varden/Bull Trout	June 1-Jan. 31	Min. size 20". May be retained as part of TROUT daily limit.
	All Other TROUT	June 1-Jan. 31	Min. size 14". Daily limit 2.
	Other Game Fish	June 1-Jan. 31	Statewide min. size/daily limit.
	SALMON	Sept. 16-Dec. 31	Min. size 12". Daily limit 2. Release CHINOOK and CHUM.
Jackman Creek (Skagit Co.)	All Game Fish	First Sat. in June-Oct. 31	Statewide min. size/daily limit. Selective gear rules.
SKAGIT RIVER (Skagit Co.) from Hwy. 530 Bridge at Rockport to Cascade River Rd. (Marblemount Bridge) (830)	ALL SPECIES - June 1-Nov. 30: <i>night closure and anti-snagging rule.</i>		
	Dolly Varden/Bull Trout	June 1-Feb. 15	Min. size 20". May be retained as part of TROUT daily limit.
	All Other TROUT	June 1-Feb. 15	Min. size 14". Daily limit 2.
	Other Game Fish	June 1-Feb. 15	Statewide min. size/daily limit.
	SALMON	June 1-July 15	Min. size 12". Daily limit 4 hatchery CHINOOK only. Up to 2 may be adults.
	SALMON	Sept. 16-Dec. 31	Min. size 12". Daily limit 2. Release CHINOOK and CHUM.
Illabot, Rocky, Bacus, and Olson creeks (Skagit Co.)	All Game Fish	First Sat. in June-Oct. 31	Statewide min. size/daily limit. Selective gear rules.
Harrison Slough (Skagit Co.)	All Game Fish	First Sat. in June-Oct. 31	Statewide min. size/daily limit.

Skagit (continued)

WATER	SPECIES	SEASON	ADDITIONAL RULES
SKAGIT RIVER (Skagit/Whatcom Co.) from Cascade River Rd. (Marblemount Bridge) to Gorge powerhouse at Newhalem (830)	All Game Fish	June 1-Jan. 31	Catch-and-release except up to 2 hatchery STEELHEAD may be retained. Selective gear rules. Internal combustion motors prohibited.
Diobsud, Bacon, Alma, Thornton, Goodell, Newhalem, and Ladder creeks (Skagit/Whatcom Co.)	All Game Fish	First Sat. in June-Oct. 31	Catch-and-release except up to 2 hatchery STEELHEAD may be retained. Selective gear rules.
SKAGIT RIVER (Whatcom Co.) Gorge Dam upstream to Ross Dam, and all tributaries except Stetattle Creek (830)	All Game Fish	First Sat. in June-Oct. 31	Statewide min. size/daily limit.
STETATTLE CREEK (Whatcom Co.) above mouth of Bucket Creek (about 1.5 miles upstream)	All Game Fish	First Sat. in June-Oct. 31	Statewide min. size/daily limit.
ROSS LAKE TRIBUTARY STREAMS (Whatcom Co.) from one mile upstream of Ross Lake to headwaters (except Ruby Creek - closed)	All Game Fish	July 1-Oct. 31	Statewide min. size/daily limit.
Big Beaver Creek from ¼ mile upstream of Ross Lake markers to headwaters, including tributary streams and beaver ponds	All Game Fish	July 1-Oct. 31	Catch-and-release and selective gear rules. Internal combustion motors prohibited.
BAKER RIVER (Skagit Co.) from mouth to Hwy. 20 Bridge at Concrete (824)	ALL SPECIES - night closure and anti-snagging rule. Dolly Varden/Bull Trout All Other TROUT Other Game Fish	Sept. 1-Oct. 31 Sept. 1-Oct. 31 Sept. 1-Oct. 31	Min. size 20". May be retained as part of TROUT daily limit. Min. size 14". Daily limit 2. Statewide min. size/daily limit.
from fish barrier dam to headwaters and all tributaries and their tributaries except Channel Creek (824)	All Game Fish	First Sat. in June-Oct. 31	Statewide min. size/daily limit.
Channel Creek (Whatcom Co.)	All Game Fish	First Sat. in June-Sept. 15	Statewide min. size/daily limit.
SAUK RIVER (Skagit/Snohomish Co.) from mouth to Darrington Bridge (828)	All Game Fish	First Sat. in June-Jan. 31	Catch-and-release except up to 2 hatchery STEELHEAD may be retained. Selective gear rules. First Sat. in June-Jan. 31: internal combustion motors prohibited.
Hilt, White, and Dan's creeks (Skagit/Snohomish Co.)	All Game Fish	First Sat. in June-Oct. 31	Catch-and-release except up to 2 hatchery STEELHEAD may be retained. Selective gear rules.
SAUK RIVER (Skagit/Snohomish Co.) from Darrington Bridge to Whitechuck River (828)	All Game Fish	First Sat. in June-Jan. 31	Catch-and-release except up to 2 hatchery STEELHEAD may be retained. Selective gear rules. Internal combustion motors prohibited.
Clear Creek (Snohomish Co.) above Asbestos Creek Falls	All Game Fish	First Sat. in June-Oct. 31	Statewide min. size/daily limit.
Copper Creek (Snohomish Co.)	All Game Fish	First Sat. in June-Oct. 31	Statewide min. size/daily limit.
SAUK RIVER (Skagit/Snohomish Co.) from Whitechuck River upstream, including NORTH FORK and SOUTH FORK to Elliott Creek (828)	All Game Fish	First Sat. in June-Oct. 31	Catch-and-release except up to 2 hatchery STEELHEAD may be retained. Selective gear rules. Internal combustion motors prohibited.
Falls, Cadet, Elliott creeks (Snohomish Co.)	All Game Fish	First Sat. in June-Oct. 31	Statewide minimum size/daily limit. Selective gear rules.
Sloan Creek (Snohomish Co.)	All Game Fish	First Sat. in June-Oct. 31	Catch-and-release. Selective gear rules.
SAUK RIVER, SOUTH FORK (Snohomish Co.) above Elliott Creek (828)	All Game Fish	First Sat. in June-Aug. 31	Catch-and-release except up to 2 hatchery STEELHEAD may be retained. Selective gear rules. Internal combustion motors prohibited.
SUIATTLE RIVER (Skagit Co.) (832)	ALL SPECIES - selective gear rules. Dolly Varden/Bull Trout All Other TROUT Other Game Fish	First Sat. in June-Oct. 31 First Sat. in June-Oct. 31 First Sat. in June-Oct. 31	Min. size 20". May be retained as part the TROUT daily limit. Min. size 8". Daily limit 2. Statewide min. size/daily limit.
Big (above TeePee falls), Grade, Tenas, All, Straight, Buck (above upper boundary of Buck Creek Campground), Lime, Downey, Sulphur, Milk, and Canyon creeks (Skagit/Snohomish Co.)	All Game Fish	First Sat. in June-Oct. 31	Statewide min. size/daily limit. Selective gear rules.
WHITECHUCK RIVER (Snohomish Co.)	ALL SPECIES - selective gear rules. Dolly Varden/Bull Trout All Other TROUT Other Game Fish	First Sat. in June-Oct. 31 First Sat. in June-Oct. 31 First Sat. in June-Oct. 31	Min. size 20". May be retained as part of TROUT daily limit. Min. size 8". Daily limit 2. Statewide min. size/daily limit.
Pugh, Owl, and Camp creeks (Snohomish Co.)	All Game Fish	First Sat. in June-Oct. 31	Statewide min. size/daily limit. Selective gear rules.

Skagit (continued)

WATER	SPECIES	SEASON	ADDITIONAL RULES
CASCADE RIVER (Skagit Co.) from mouth to Rockport-Cascade Rd. Bridge (826)	ALL SPECIES - June 1-July 15 and Sept. 16-Nov. 30: anti-snagging rule and night closure.		
	Dolly Varden/Bull Trout	June 1-July 15	Min. size 20". May be retained as part of TROUT daily limit.
	All Other TROUT	June 1-July 15	Min. size 14". Daily limit 2.
	Other Game Fish	June 1-July 15	Statewide min. size/daily limit.
	Dolly Varden/Bull Trout	Sept. 16-Feb. 15	Min. size 20". May be retained as part of TROUT daily limit.
	All Other TROUT	Sept. 16-Feb. 15	Min. size 14". Daily limit 2.
Other Game Fish	Sept. 16-Feb. 15	Statewide min. size/daily limit.	
	SALMON	June 1-July 15	Min. size 12". Daily limit 4 hatchery CHINOOK only. Up to 2 may be adults.
SALMON	Sept. 16-Nov. 30	Min. size 12". Daily limit 4 COHO only.	
	Jordan Creek (Skagit Co.)	All Game Fish	First Sat. in June-Oct. 31
CASCADE RIVER (Skagit Co.) from Rockport/Cascade Rd. Bridge upstream including forks (826)	All Game Fish	First Sat. in June-Jan. 31	Catch-and-release except up to 2 hatchery STEELHEAD may be retained. Selective gear rules. Internal combustion motors prohibited.
Boulder, Marble, Found, and Kindy creeks (Skagit Co.)	All Game Fish	First Sat. in June-Oct. 31	Catch-and-release. Selective gear rules.

Stillaguamish

WATER	SPECIES	SEASON	ADDITIONAL RULES
STILLAGUAMISH RIVER (Snohomish Co.) and all sloughs downstream of Marine Drive (south of Stanwood) (876)	ALL SPECIES - Aug. 1-Nov. 30: night closure and anti-snagging rule.		
	TROUT	Year-round	Min. size 14". Daily limit 2.
	Other Game Fish	Year-round	Statewide min. size/daily limit.
	SALMON	Sept. 1-Dec. 31	Min. size 12". Daily limit 2 COHO only.
from Marine Drive upstream to forks (876)	CLOSED WATERS - from water control structure/barrier dam (downstream of I-5) downstream 200'		
	ALL SPECIES - Aug. 1-Nov. 30: night closure. June 1-Nov. 30: selective gear rules.		
	All Game Fish	First Sat. in June-Nov. 30	Catch-and-release except up to 2 hatchery STEELHEAD may be retained.
	TROUT	Dec. 1-Jan. 31	Min. size 14". Daily limit 2.
Other Game Fish	Dec. 1-Jan. 31	Statewide min. size/daily limit.	
	SALMON	Sept. 1-Dec. 31	Min. size 12". Daily limit 2 COHO only.
PILCHUCK CREEK (Snohomish Co.) (Stillaguamish system) from mouth to Hwy. 9 Bridge (870)	ALL SPECIES - First Sat. in June-Nov. 30: selective gear rules. Internal combustion motors prohibited.		
	TROUT	First Sat. in June-Jan. 31	Min. size 14". Daily limit 2.
	Other Game Fish	First Sat. in June-Jan. 31	Statewide min. size/daily limit.
from Hwy. 9 Bridge to Pilchuck Falls (870)	ALL SPECIES - selective gear rules.		
	TROUT	First Sat. in June-Oct. 31	Min. size 14". Daily limit 2.
	Other Game Fish	First Sat. in June-Oct. 31	Statewide min. size/daily limit.
from Pilchuck Falls upstream including all tributaries and their tributaries, including tributaries to Lake Cavanaugh	All Game Fish	First Sat. in June-Oct. 31	Statewide min. size/daily limit.
	STILLAGUAMISH RIVER, NORTH FORK (Snohomish Co.) from mouth to French Creek (872)	ALL SPECIES - Aug. 1-Nov. 30: night closure and anti-snagging rule. Fishing from any floating device prohibited upstream of the Hwy. 530 Bridge at mile post 28.8 (Cicero Bridge). Motors prohibited downstream from the Hwy. 530 Bridge.	
All Game Fish		First Sat. in June-Nov. 30	Catch-and-release except up to 2 hatchery STEELHEAD may be retained. Fly fishing only.
TROUT		Dec. 1-Jan. 31	Min. size 14". Daily limit 2.
Other Game Fish		Dec. 1-Jan. 31	Statewide min. size/daily limit.
from French Creek to Swede Heaven Bridge (872)	ALL SPECIES - Aug. 1-Nov. 30: night closure and anti-snagging rule.		
	All Game Fish	First Sat. in June-Nov. 30	Catch-and-release except up to 2 hatchery STEELHEAD may be retained. Fly fishing only.
	TROUT	Dec. 1-Feb. 15	Min. size 14". Daily limit 2.
	Other Game Fish	Dec. 1-Feb. 15	Statewide min. size/daily limit.
Boulder River (Snohomish Co.) from mouth to Boulder Falls	All Game Fish	First Sat. in June-Oct. 31	Catch-and-release except up to 2 hatchery STEELHEAD may be retained. Selective gear rules.
	from Boulder Falls upstream	All Game Fish	First Sat. in June-Oct. 31
STILLAGUAMISH RIVER, NORTH FORK (Snohomish Co.) Swede Heaven Bridge to N. Fork Falls (approx. one mile upstream of Cascade Creek) (872)	All Game Fish	First Sat. in June-Oct. 31	Catch-and-release except up to 2 hatchery STEELHEAD may be retained. Selective gear rules.
Squire Creek (Snohomish Co.)	All Game Fish	First Sat. in June-Oct. 31	Catch-and-release except up to 2 hatchery STEELHEAD may be retained. Selective gear rules.
STILLAGUAMISH RIVER, NORTH FORK (Snohomish Co.) upstream of falls and all tributaries (872)	All Game Fish	First Sat. in June-Oct. 31	Statewide min. size/daily limit.

Stillaguamish (continued)

WATER	SPECIES	SEASON	ADDITIONAL RULES
STILLAGUAMISH RIVER, SOUTH FORK (Snohomish Co.) from mouth to 400' below Granite Falls fishway outlet (874)	ALL SPECIES - Aug. 1-Nov. 30: night closure and anti-snagging rule.		
	TROUT	First Sat. in June-Jan. 31	Min. size 14". Daily limit 2.
	Other Game Fish	First Sat. in June-Jan. 31	Statewide min. size/daily limit.
from Mountain Loop Hwy. upstream	ALL SPECIES - selective gear rules. Motors prohibited. Aug. 1-Nov. 30: night closure and anti-snagging rule.		
	All Game Fish	First Sat. in June-Nov. 30	Statewide min. size/daily limit.
Canyon Creek (Snohomish Co.) (South Fork Stillaguamish) from mouth to forks (866)	All Game Fish	First Sat. in June-Jan. 31	Catch-and-release except up to 2 hatchery STEELHEAD may be retained.
Black Creek (Snohomish Co.) from Bear Creek confluence upstream	All Game Fish	First Sat. in June-Oct. 31	Statewide min. size/daily limit.

Snohomish

WATER	SPECIES	SEASON	ADDITIONAL RULES
SNOHOMISH RIVER (Snohomish Co.) from mouth (Burlington-Northern Railroad bridges) (including all channels, sloughs, and interconnected waterways) upstream to confluence of the Skykomish and Snoqualmie rivers (all channels) (850)	ALL SPECIES - Aug. 1-Nov. 30: night closure and anti-snagging rule.		
	Dolly Varden/Bull Trout	First Sat. in June-Jan. 31	Min. size 20". May be retained as part of the TROUT daily limit.
	All Other TROUT	First Sat. in June-Jan. 31	Min. size 14". Daily limit 2.
	Other Game Fish	First Sat. in June-Jan. 31	Statewide min. size/daily limit.
PILCHUCK RIVER (Snohomish Co.) from mouth to 500' downstream of the Snohomish city diversion dam (840)	ALL SPECIES - fishing from any floating device prohibited.		
	TROUT	Dec. 1-Jan. 31	Min. size 14". Daily limit 2.
SKYKOMISH RIVER (Snohomish Co.) mouth to Lewis St. Bridge in Monroe (844)	ALL SPECIES - Aug. 1-Nov. 30: night closure and anti-snagging rule. Nov. 1-Jan. 31: fishing from any floating device prohibited from boat ramp below Lewis St. Bridge at Monroe to 2,500' downstream.		
	Dolly Varden/Bull Trout	June 1-Jan. 31	Min. size 20". May be retained as part of the TROUT daily limit.
	All Other TROUT	June 1-Jan. 31	Min. size 14". Daily limit 2.
	Other Game Fish	June 1-Jan. 31	Statewide min. size/daily limit.
	SALMON	Sept. 1-Dec. 31	Min. size 12". Daily limit 3. Release CHINOOK and PINK.
from Lewis St. Bridge in Monroe to Wallace River (844)	ALL SPECIES - June 1-Nov. 30: night closure and anti-snagging rule.		
	Dolly Varden/Bull Trout	June 1-Jan. 31	Min. size 20". May be retained as part of the TROUT daily limit.
	All Other TROUT	June 1-Jan. 31	Min. size 14". Daily limit 2.
	Other Game Fish	June 1-Jan. 31	Statewide min. size/daily limit.
	SALMON	Sept. 1-Dec. 31	Min. size 12". Daily limit 3. Release CHINOOK and PINK.
Woods Creek, East Fork (Snohomish Co.) and all tributaries, including beaver ponds (upstream of Old Pipeline Rd.)	All Game Fish	First Sat. in June-Oct. 31	Statewide min. size/daily limit.
Youngs Creek (Snohomish Co.) and all tributaries above Potson Rd (299th Ave. SE Bridge)	All Game Fish	First Sat. in June-Oct. 31	Statewide min. size/daily limit.
SULTAN RIVER (Snohomish Co.) from mouth to 400' downstream of diversion dam (river mile 9.7) (854)	Dolly Varden/Bull Trout	First Sat. in June-Jan. 31	Min. size 20". May be retained as part of the TROUT daily limit.
	All Other TROUT	First Sat. in June-Jan. 31	Min. size 14". Daily limit 2.
	Other Game Fish	First Sat. in June-Jan. 31	Statewide min. size/daily limit.
	All Game Fish	First Sat. in June-Oct. 31	Statewide min. size/daily limit.
from diversion dam to 400' below Culmback Dam (854)	All Game Fish	First Sat. in June-Oct. 31	Statewide min. size/daily limit.
Chaplain Creek (Snohomish Co.) from above waterfall to the dam at Chapman Lake including tributaries and beaver ponds	All Game Fish	First Sat. in June-Oct. 31	Statewide min. size/daily limit.
Marsh Creek (Snohomish Co.) from above the falls upstream including tributaries and beaver ponds	All Game Fish	First Sat. in June-Oct. 31	Statewide min. size/daily limit.
WALLACE RIVER (Snohomish Co.) from mouth (farthest downstream railroad bridge) to 363rd Ave. SE/Reece Rd. (Dike Road) (860)	ALL SPECIES - Sept. 16-Nov. 30: night closure and anti-snagging rule. Nov. 1-Feb. 15: fishing from any floating device prohibited.		
	Dolly Varden/Bull Trout	First Sat. in June-Feb. 15	Min. size 20". May be retained as part of the TROUT daily limit.
	All Other TROUT	First Sat. in June-Feb. 15	Min. size 14". Daily limit 2.
	Other Game Fish	First Sat. in June-Feb. 15	Statewide min. size/daily limit.
	SALMON	Sept. 16-Nov. 30	Min. size 12". Daily limit 3 COHO only.
from 363rd Ave. SE/Reece Rd. (Dike Road) to 200' upstream of water intake of salmon hatchery (860)	ALL SPECIES - Sept. 16-Nov. 30: night closure and anti-snagging rule. Nov. 1-Feb. 15: fishing from any floating device prohibited.		
	Dolly Varden/Bull Trout	Sept. 16-Feb. 15	Min. size 20". May be retained as part of the TROUT daily limit.
	All Other TROUT	Sept. 16-Feb. 15	Min. size 14". Daily limit 2.
	Other Game Fish	Sept. 16-Feb. 15	Statewide min. size/daily limit.
	SALMON	Sept. 16-Nov. 30	Min. size 12". Daily limit 3 COHO only.

(continued on next page)

Snohomish (continued)

WATER	SPECIES	SEASON	ADDITIONAL RULES
WALLACE RIVER (cont.) from 200' upstream of water intake of salmon hatchery to Wallace Falls (860)	ALL SPECIES - Nov. 1-Jan. 31: fishing from any floating device prohibited. Dolly Varden/Bull Trout All Other TROUT Other Game Fish	Nov. 1-Jan. 31 Nov. 1-Jan. 31 Nov. 1-Jan. 31	Min. size 20". May be retained as part of TROUT daily limit. Min. size 14". Daily limit 2. Statewide min. size/daily limit.
Olney Creek (Snohomish Co.) upstream of Olney Falls, and all tributaries and beaver ponds	All Game Fish	First Sat. in June-Oct. 31	Statewide min. size/daily limit.
from Wallace Falls upstream and all tributaries and their tributaries (860)	All Game Fish	First Sat. in June-Oct. 31	Statewide min. size/daily limit.
SKYKOMISH RIVER (Snohomish Co.) from Wallace River to Gold Bar/Big Eddy Access (Hwy. 2 Bridge) (844)	ALL SPECIES - Aug 1-Nov. 30: night closure and anti-snagging rule. Dolly Varden/Bull Trout All Other TROUT Other Game Fish SALMON	June 1-Jan. 31 June 1-Jan. 31 June 1-Jan. 31 Sept. 1-Dec. 31	Min. size 20". May be retained as part of TROUT daily limit. Min. size 14". Daily limit 2. Statewide min. size/daily limit. Min. size 12". Daily limit 3. Release CHINOOK and PINK.
from Gold Bar/Big Eddy Access (Hwy. 2 Bridge) to confluence of North and South forks (844)	ALL SPECIES - Aug. 1-Nov. 30: night closure and anti-snagging rule. Aug. 1-Feb. 15: fishing from any floating device prohibited from 1,000' downstream of Reiter Ponds outlet to 1500' upstream. Dolly Varden/Bull Trout All Other TROUT Other Game Fish SALMON	June 1-Feb. 15 June 1-Feb. 15 June 1-Feb. 15 Sept. 1-Dec. 31	Min. size 20". May be retained as part of TROUT daily limit. Min. size 14". Daily limit 2. Statewide min. size/daily limit. Min. size 12". Daily limit 3. Release CHINOOK and PINK.
SKYKOMISH RIVER, NORTH FORK (Snohomish Co.) from mouth to 1,000' downstream of Bear Creek Falls (846)	All Game Fish	First Sat. in June-Jan. 31	Selective gear rules and catch-and-release except up to 2 hatchery STEELHEAD may be retained.
from Deer Falls (about ¼ mile upstream of Goblin Creek) upstream and all tributaries (846)	All Game Fish	First Sat. in June-Oct. 31	Statewide min. size/daily limit.
SKYKOMISH RIVER, SOUTH FORK (King/Snohomish Co.) from mouth to 600' downstream of the Sunset Falls Fishway (848)	ALL SPECIES - Aug. 1-Nov. 30: night closure and anti-snagging rule. TROUT Other Game Fish	First Sat. in June-Jan. 31 First Sat. in June-Jan. 31	Min. size 14". Daily limit 2. Statewide min. size/daily limit.
from Sunset Falls upstream (848)	All SPECIES - selective gear rules. Internal combustion motors prohibited. TROUT Other Game Fish WHITEFISH	First Sat. in June-Nov. 30 First Sat. in June-Nov. 30 Dec. 1-Last day in Feb.	Min. size 14". Daily limit 2. Selective gear rules. Statewide min. size/daily limit. Selective gear rules. No min. size. Daily limit 15 WHITEFISH only.
All tributaries to the SOUTH FORK SKYKOMISH RIVER upstream of Sunset Falls, including their tributaries	All SPECIES - selective gear rules. Internal combustion motors prohibited. TROUT Other Game Fish	First Sat. in June-Nov. 30 First Sat. in June-Nov. 30	Min. size 14". Daily limit 2. Statewide min. size/daily limit.
TYE RIVER (King Co.) continuation of SOUTH FORK SKYKOMISH RIVER beginning from Foss River upstream to Alpine Falls	TROUT Other Game Fish WHITEFISH	First Sat. in June-Oct. 31 First Sat. in June-Oct. 31 Nov. 1-Last day in Feb.	Min. size 14". Daily limit 2. Selective gear rules. Internal combustion motors prohibited. Statewide min. size/daily limit. Selective gear rules. Internal combustion motors prohibited. No min. size. Daily limit 15 WHITEFISH only.
TYE RIVER (King Co.) from Alpine Falls upstream	All Game Fish	First Sat. in June-Oct. 31	Statewide min. size/daily limit.
All tributaries to the TYE RIVER upstream of Foss River, including their tributaries	All Game Fish	First Sat. in June-Oct. 31	Statewide min. size/daily limit.
SNOQUALMIE RIVER (King Co.) from mouth to boat ramp at Plum access (852)	ALL SPECIES - Sept. 1-Nov. 30: night closure. First Sat. in June -Nov. 30: selective gear rules. TROUT Other Game Fish SALMON	First Sat. in June-Jan. 31 First Sat. in June-Jan. 31 Sept. 1-Dec. 31	Min. size 14". Daily limit 2. Statewide min. size/daily limit. Min. size 12". Daily limit 3. Release CHINOOK and PINK.
from boat ramp at Plum access to Snoqualmie Falls (852)	CLOSED WATERS - within Puget Power tunnel at falls and within 50' of any point on Puget Power's lower plant #2 building (north bank). ALL SPECIES - Sept. 1-Nov. 30: night closure. First Sat. in June-Nov. 30: selective gear rules. Nov. 1-Feb. 15: fishing from any floating device prohibited from boat ramp at Plum access to mouth of Tokul Creek (about ¼ mile). TROUT Other Game Fish SALMON	First Sat. in June-Feb. 15 First Sat. in June-Feb. 15 Sept. 1-Dec. 31	Min. size 14". Daily limit 2. Statewide min. size/daily limit. Min. size 12". Daily limit 3. Release CHINOOK and PINK.
TOLT RIVER (King Co.) from mouth to USGS trolley cable near confluence of North and South forks (858)	All SPECIES - First Sat. in June-Nov. 30: selective gear rules. Internal combustion motors prohibited. TROUT Other Game Fish	First Sat. in June-Jan. 31 First Sat. in June-Jan. 31	Min. size 14". Daily limit 2. Statewide min. size/daily limit.

Snohomish (continued)

WATER	SPECIES	SEASON	ADDITIONAL RULES
TOLT RIVER, NORTH FORK (King Co.) from falls in Section 26 upstream (858)	All Game Fish	First Sat. in June-Oct. 31	Catch-and-release and selective gear rules. Internal combustion motors prohibited.
TOLT RIVER, SOUTH FORK (King Co.) from dam upstream (858)	All SPECIES - selective gear rules. Internal combustion motors prohibited. TROUT Other Game Fish	First Sat. in June-Oct. 31 First Sat. in June-Oct. 31	Min. size 10". Daily limit 2. Statewide min. size/daily limit.
RAGING RIVER (King Co.) from mouth to Hwy. 18 Bridge (3 miles upstream from Preston) (842)	TROUT Other Game Fish	First Sat. in June-Jan. 31 First Sat. in June-Jan. 31	Min. size 14". Daily limit 2. Statewide min. size/daily limit.
from Hwy. 18 Bridge (3 miles upstream from Preston) upstream	All Game Fish	First Sat. in June-Oct. 31	Statewide min. size/daily limit.
TOKUL CREEK (King Co.) from mouth to Fish Hatchery Rd. Bridge (856)	All SPECIES - anti-snagging rule. Closed daily from 5:00 p.m.-7:00 a.m. TROUT Other Game Fish	Dec. 1-Feb. 15 Dec. 1-Feb. 15	Min. size 14". Daily limit 2. Statewide min. size/daily limit.
from Fish Hatchery Rd. Bridge to posted cable boundary marker (approximately 400' downstream of the hatchery intake) (856)	All SPECIES - anti-snagging rule. Closed daily from 5:00 p.m.-7:00 a.m. TROUT Other Game Fish	Jan. 15-Feb. 15 Jan. 15-Feb. 15	Min. size 14". Daily limit 2. Statewide min. size/daily limit.
from Tokul Rd. SE upstream and all tributaries (856)	All Game Fish	First Sat. in June-Oct. 31	Statewide min. size/daily limit.
SNOQUALMIE RIVER (King Co.) from Snoqualmie Falls upstream including North and South forks (852)	All SPECIES - selective gear rules. Internal combustion motors prohibited. TROUT Other Game Fish All Game Fish	First Sat. in June-Oct. 31 First Sat. in June-Oct. 31 Nov. 1-Fri. before the first Sat. in June	Min. size 10". Daily limit 2. Statewide min. size/daily limit. Catch-and-release.
SNOQUALMIE RIVER TRIBUTARIES upstream of Snoqualmie Falls, and tributaries of North and South forks, (except Tate, Sunday and Phillapa creeks - closed)	All Game Fish	First Sat. in June-Oct. 31	Statewide min. size/daily limit.
Boxley Creek (King Co.) (South Fork Snoqualmie River) from falls (located approximately river mile 0.9) upstream	All Game Fish	First Sat. in June-Oct. 31	Statewide min. size/daily limit.
Coal Creek (King Co.) (near Snoqualmie) from mouth to Hwy. I-90	Juvenile anglers only (under 15 years old). TROUT Other Game Fish	4th Sat. in Apr.-Oct. 31 4th Sat. in Apr.-Oct. 31	No min size. Daily limit 2. Statewide min. size/daily limit.
from Hwy. I-90 upstream	All Game Fish	First Sat. in June-Oct. 31	Statewide min. size/daily limit.
Kimball Creek (King Co.) (near Snoqualmie)	Juvenile anglers only (under 15 years old). TROUT Other Game Fish	4th Sat. in Apr.-Oct. 31 4th Sat. in Apr.-Oct. 31	No min size. Daily limit 2. Statewide min. size/daily limit.
SNOQUALMIE RIVER, MIDDLE FORK (King Co.) from mouth upstream including all tributaries except Pratt and Taylor rivers (852)	All Game Fish	Year-round	Catch-and-release and selective gear rules. Internal combustion motors prohibited.
Pratt River (King Co.)	All Game Fish	First Sat. in June-Oct. 31	Catch-and-release and selective gear rules. Internal combustion motors prohibited.
Taylor River (King Co.)	All Game Fish	First Sat. in June-Oct. 31	Catch-and-release and selective gear rules. Internal combustion motors prohibited.

Lake Washington Tributaries

WATER	SPECIES	SEASON	ADDITIONAL RULES
THORNTON CREEK (King Co.) (tributary to Lake Washington)	Juvenile anglers only (under 15 years old). All Game Fish	First Sat. in June-Aug. 31	Statewide min. size/daily limit.
SAMMAMISH RIVER (Slough) (King Co.) from 68 th Ave. NE Bridge to Lake Sammamish	All SPECIES - selective gear rules. Internal combustion motors prohibited. TROUT Other Game Fish	Jan. 1-Aug. 31 Jan. 1-Aug. 31	Catch-and-release. Statewide min. size/daily limit.
SWAMP CREEK (Snohomish/King Co.) (tributary to Sammamish River)	Juvenile anglers only (under 15 years old). All Game Fish	First Sat. in June-Aug. 31	Statewide min. size/daily limit.
NORTH CREEK (Snohomish/King Co.) (tributary of Sammamish River)	Juvenile anglers only (under 15 years old). All Game Fish	First Sat. in June-Aug. 31	Statewide min. size/daily limit.

Lake Washington Tributaries (continued)

WATER	SPECIES	SEASON	ADDITIONAL RULES
LITTLE BEAR CREEK (Snohomish/King Co.) (tributary of Sammamish River)	Juvenile anglers only (under 15 years old). All Game Fish	First Sat. in June-Aug. 31	Statewide min. size/daily limit.
BIG BEAR CREEK (Snohomish/King Co.) (tributary of Sammamish River)	Juvenile anglers only (under 15 years old). All Game Fish	First Sat. in June-Aug. 31	Statewide min. size/daily limit.
ISSAQUAH CREEK (King Co.) (tributary of Lake Sammamish)	Juvenile anglers only (under 15 years old). All Game Fish	First Sat. in June-Aug. 31	Statewide min. size/daily limit.
TIBBETTS CREEK (King Co.) (tributary of Lake Sammamish)	Juvenile anglers only (under 15 years old). All Game Fish	First Sat. in June-Aug. 31	Statewide min. size/daily limit.
KELSEY CREEK (King Co.) (including Mercer Slough) (tributary of Lake Washington)	Juvenile anglers only (under 15 years old). All Game Fish	First Sat. in June-Aug. 31	Statewide min. size/daily limit.
COAL CREEK (King Co.) (tributary to Lake Washington)	Juvenile anglers only (under 15 years old). All Game Fish	First Sat. in June-Aug. 31	Statewide min. size/daily limit.
MAY CREEK (King Co.) (tributary of Lake Washington)	Juvenile anglers only (under 15 years old). All Game Fish	First Sat. in June-Aug. 31	Statewide min. size/daily limit.
CEDAR RIVER (King Co.) from mouth to Landsburg Road Bridge (RM 21.5)	ALL SPECIES - selective gear rules, <i>internal combustion motors prohibited, and night closure.</i> TROUT Other Game Fish	First Sat. in June-Aug. 31 First Sat. in June-Aug. 31	Catch-and-release. Statewide min. size/daily limit.

Green/Duwamish

WATER	SPECIES	SEASON	ADDITIONAL RULES
GREEN (DUWAMISH) RIVER (King Co.) downstream of 1st Ave. South Bridge	See Marine Area 10 rules		
from 1st Ave. South Bridge to Old Hwy. 99/Tukwila Intl. Blvd. (746)	ALL SPECIES - Sept. 1-Nov. 30: night closure and anti-snagging rule. Nov. 1-Jan. 15: fishing from any floating device prohibited. TROUT Other Game Fish TROUT Other Game Fish SALMON	First Sat. in June-July 31 First Sat. in June-July 31 Sept. 1-Jan. 15 Sept. 1-Jan. 15 Sept. 1-Dec. 31	Min. size 14". Daily limit 2. Statewide min. size/daily limit. Min. size 14". Daily limit 2. Statewide min. size/daily limit. Min. size 12". Daily limit 6. Up to 3 adults may be retained. Release CHINOOK.
from Old Hwy. 99/Tukwila Intl. Blvd. to I-405 (746)	ALL SPECIES - Sept. 1-Nov. 30: night closure and anti-snagging rule. Nov. 1-Jan. 15: fishing from any floating device prohibited. TROUT Other Game Fish TROUT Other Game Fish SALMON	First Sat. in June-July 31 First Sat. in June-July 31 Sept. 1-Jan. 15 Sept. 1-Jan. 15 Sept. 1-Dec. 31	Min. size 14". Daily limit 2. Statewide min. size/daily limit. Min. size 14". Daily limit 2. Statewide min. size/daily limit. Min. size 12". Daily limit 6. Up to 3 adults may be retained. Release CHINOOK.
from I-405 to S. 277th Bridge in Auburn (746)	ALL SPECIES - Oct. 1-Nov. 30: night closure and anti-snagging rule. Nov. 1-Jan. 15: fishing from any floating device prohibited. TROUT Other Game Fish TROUT Other Game Fish SALMON	First Sat. in June-July 31 First Sat. in June-July 31 Oct. 1-Jan. 15 Oct. 1-Jan. 15 Oct. 1-Dec. 31	Min. size 14". Daily limit 2. Statewide min. size/daily limit. Min. size 14". Daily limit 2. Statewide min. size/daily limit. Min. size 12". Daily limit 6. Up to 3 adults may be retained. Release CHINOOK.
from the S. 277th Bridge to Auburn-Black Diamond Rd. Bridge (746)	ALL SPECIES - Oct. 16-Nov. 30: night closure and anti-snagging rule. Nov. 1-Jan. 31: fishing from any floating device prohibited. TROUT Other Game Fish TROUT Other Game Fish SALMON	First Sat. in June-Aug. 15 First Sat. in June-Aug. 15 Oct. 16-Jan. 31 Oct. 16-Jan. 31 Oct. 16-Dec. 31	Min. size 14". Daily limit 2. Statewide min. size/daily limit. Min. size 14". Daily limit 2. Statewide min. size/daily limit. Min. size 12". Daily limit 6. Up to 3 adults may be retained. Release CHINOOK.
from the Auburn-Black Diamond Rd. Bridge to the mouth of Cristy Creek (at Flaming Geyser State Park) (746)	CLOSED WATERS - within 150' of the mouth of Keta (Crisp) Creek. ALL SPECIES - Aug. 1-Sept. 15 and Nov. 1-Nov. 30: night closure and anti-snagging rule. TROUT Other Game Fish TROUT Other Game Fish SALMON	First Sat. in June-Sept. 15 First Sat. in June-Sept. 15 Nov. 1-Jan. 31 Nov. 1-Jan. 31 Nov. 1-Dec. 31	Min. size 14". Daily limit 2. Statewide min. size/daily limit. Min. size 14". Daily limit 2. Statewide min. size/daily limit. Min. size 12". Daily limit 6. Up to 3 adults may be retained. Release CHINOOK.

(continued on next page)

Green/Duwamish (continued)

WATER	SPECIES	SEASON	ADDITIONAL RULES
GREEN (DUWAMISH) RIVER (cont.) from the mouth of Cristy Creek (at Flaming Geyser State Park) to the water pipeline walk bridge (½ mile downstream of Tacoma Headworks Dam) (746)	CLOSED WATERS - within 150' of the Palmer Ponds outlet rack. ALL SPECIES - Aug. 1-Nov. 30: night closure and anti-snagging rule.		
	TROUT	First Sat. in June-Jan. 31	Min. size 14". Daily limit 2.
	Other Game Fish SALMON	First Sat. in June-Jan. 31 Nov. 1-Dec. 31	Statewide min. size/daily limit. Min. size 12". Daily limit 6. Up to 3 adults may be retained. Release CHINOOK.
from Friday Creek upstream including all tributaries and their tributaries	All Game Fish	First Sat. in June-Oct. 31	Statewide min. size/daily limit.
SOOS CREEK (King Co.) mouth to hatchery rack (748)	TROUT	First Sat. in June-Aug. 31	Min. size 14". Daily limit 2.
	Other Game Fish	First Sat. in June-Aug. 31	Statewide min. size/daily limit.

Puyallup

WATER	SPECIES	SEASON	ADDITIONAL RULES
HYLEBOS CREEK (Pierce Co.)	TROUT	First Sat. in June-Oct. 31	Min. size 14". Daily limit 2. Selective gear rules.
	Other Game Fish	First Sat. in June-Oct. 31	Statewide min. size/daily limit. Selective gear rules.
PUYALLUP RIVER (Pierce Co.) from 11th St. Bridge to City of Puyallup outfall structure across the river from the junction of Freeman Rd. and N. Levee Rd. (804)	CLOSED WATERS - Aug. 26, and Sept. 2, 3, 9, 10, and 11. ALL SPECIES - Aug. 16-Nov. 30: night closure, anti-snagging rule, and barbless hooks required.		
	TROUT	Aug. 16-Dec. 31	Min. size 14". Daily limit 2.
	Other Game Fish SALMON	Aug. 16-Dec. 31 Aug. 16-Dec. 31	Statewide min. size/daily limit. Min. size 12". Daily limit 6. Up to 2 adults may be retained. Release wild adult CHINOOK.
from City of Puyallup outfall structure across the river from the junction of Freeman Rd. and N. Levee Rd. to Carbon River (804)	ALL SPECIES - Aug. 1-Nov. 30: night closure, anti-snagging rule, and barbless hooks required.		
TROUT	Aug. 1-Dec. 31	Min. size 14". Daily limit 2.	
Other Game Fish SALMON	Aug. 1-Dec. 31 Aug. 1-Dec. 31	Statewide min. size/daily limit. Min. size 12". Daily limit 6. Up to 2 adults may be retained. Release wild adult CHINOOK.	
Clarks Creek (Pierce Co.) from mouth to 12th Ave. SE	TROUT	First Sat. in June-Aug. 15	Min. size 14". Daily limit 2. Selective gear rules.
	Other Game Fish	First Sat. in June-Aug. 15	Statewide min. size/daily limit. Selective gear rules.
WHITE (STUCK) RIVER (Pierce Co.) from mouth to R St. Bridge in Auburn (808)	ALL SPECIES - Oct. 1-Jan. 15: night closure and selective gear rules.		
	All Game Fish	Oct. 1-Oct. 31	Catch-and-release. Fly fishing only.
	TROUT Other Game Fish	Nov. 1-Jan. 15 Nov. 1-Jan. 15	Min. size 14". Daily limit 2. Statewide min. size/daily limit.
from R St. Bridge to Hwy. 410 Bridge at Buckley (808)	ALL SPECIES - night closure and selective gear rules.		
TROUT	Oct. 1-Oct. 31	Min. size 14". Daily limit 2.	
Other Game Fish	Oct. 1-Oct. 31	Statewide min. size/daily limit.	
from Weyerhaeuser 6000 Rd. Bridge (Bridge Camp) upstream (808)	All Game Fish	July 1-Oct. 31	Catch-and-release. Night closure. Selective gear rules. Internal combustion motors prohibited.
	WHITEFISH	Nov. 1-Jan. 31	No min. size. Daily limit 15 WHITEFISH only. WHITEFISH gear rules.
Clearwater River (Pierce Co.)	ALL SPECIES - selective gear rules. Internal combustion motors prohibited.		
	TROUT Other Game Fish	July 1-Oct. 31 July 1-Oct. 31	Min. size 14". Daily limit 2. Statewide min. size/daily limit.
Boise Creek (King Co.) from Hwy. 410 crossing upstream	All Game Fish	First Sat. in June-Oct. 31	Statewide min. size/daily limit.
Red Creek (King Co.)	All Game Fish	First Sat. in June-Oct. 31	Statewide min. size/daily limit.
Scatter Creek (King Co.) from Hwy. 410 crossing upstream	All Game Fish	First Sat. in June-Oct. 31	Statewide min. size/daily limit.
Lyle Creek (Clearwater River tributary) (Pierce Co.)	All Game Fish	First Sat. in June-Oct. 31	Statewide min. size/daily limit.
Greenwater River (King/Pierce Co.) from mouth to Greenwater Lakes	WHITEFISH	Nov. 1-Jan. 31	No min. size. Daily limit 15 WHITEFISH only. WHITEFISH gear rules.
	from Greenwater Lakes upstream	All Game Fish	First Sat. in June-Oct. 31
Pyramid Creek (King Co.) from Forest Service Rd. 7000 upstream	All Game Fish	First Sat. in June-Oct. 31	Statewide min. size/daily limit.
CARBON RIVER (Pierce Co.) from mouth to Voights Creek (802)	ALL SPECIES - Sept. 1-Nov. 30: night closure and anti-snagging rule.		
	TROUT	Sept. 1-Nov. 30	Min. size 14". Daily limit 2.
	Other Game Fish All Game Fish	Sept. 1-Jan. 15 Dec. 1-Jan. 15	Statewide min. size/daily limit. Catch-and-release except up to 2 hatchery STEELHEAD may be retained. Selective gear rules.
	SALMON	Sept. 1-Nov. 30	Min. size 12". Daily limit 6. Up to 4 adults may be retained. Up to 2 may be adult CHINOOK. Release wild adult CHINOOK and CHUM.

(continued on next page)

Puyallup (continued)

WATER	SPECIES	SEASON	ADDITIONAL RULES
CARBON RIVER (cont.) from Voights Creek to Hwy. 162 Bridge (802)	All Game Fish	Nov. 1-Jan. 15	Catch-and-release except up to 2 hatchery STEELHEAD may be retained. Selective gear rules.
Voights Creek (Pierce Co.) from falls under power line upstream	All Game Fish	First Sat. in June-Oct. 31	Statewide min. size/daily limit.
South Prairie Creek (Pierce Co.) from City of Buckley diversion dam (river mile 15) upstream	All Game Fish	First Sat. in June-Oct. 31	Statewide min. size/daily limit.
Wilkeson Creek (Pierce Co.) from confluence with Gale Creek upstream	All Game Fish	First Sat. in June-Oct. 31	Statewide min. size/daily limit.
Gale Creek (Pierce Co.) from confluence with Wilkeson Creek upstream	All Game Fish	First Sat. in June-Oct. 31	Statewide min. size/daily limit.
Beaver and New Pond creeks (Pierce Co.)	All Game Fish	First Sat. in June-Oct. 31	Statewide min. size/daily limit.
Evans Creek (Pierce Co.) from Carbon River-Fairfax Rd. upstream	All Game Fish	First Sat. in June-Oct. 31	Statewide min. size/daily limit.
Cayada Creek (Pierce Co.)	All Game Fish	First Sat. in June-Oct. 31	Statewide min. size/daily limit.
PUYALLUP RIVER (Pierce Co.) from Carbon River upstream (804)	All Game Fish	Sept. 1-Jan. 15	Catch-and-release except up to 2 hatchery STEELHEAD may be retained. Selective gear rules.
Fiske and Fox creeks (Pierce Co.) from Fiske Rd. East upstream	All Game Fish	First Sat. in June-Oct. 31	Statewide min. size/daily limit.
Kings Creek (Pierce Co.) from mouth upstream	All Game Fish	First Sat. in June-Oct. 31	Statewide min. size/daily limit.

Nisqually

WATER	SPECIES	SEASON	ADDITIONAL RULES
CHAMBERS CREEK (Pierce Co.) from mouth (Burlington-Northern RR Bridge) to markers 400' below the Boise-Cascade Dam (near West Tacoma Mill) (714)	Marine Area 13 rules apply downstream of the Burlington-Northern RR Bridge. ALL SPECIES - night closure and anti-snagging rule.		
	TROUT	July 1-Nov. 15	Min. size 14". Daily limit 2.
	Other Game Fish	July 1-Nov. 15	Statewide min. size/daily limit.
	SALMON	July 1-Nov. 15	Min. size 12". Daily limit 6. Up to 2 adults may be retained. Release wild COHO.
from Boise-Cascade Dam to Steilacoom Lake (714)	ALL SPECIES - night closure.		
	TROUT	July 1-Oct. 31	Min. size 14". Daily limit 2. Selective gear rules.
	Other Game Fish	July 1-Oct. 31	Statewide min. size/daily limit. Selective gear rules.
CLOVER CREEK (Pierce Co.) from Steilacoom Lake upstream and all tributaries	All Game Fish	July 1-Oct. 31	Statewide min. size/daily limit.
NISQUALLY RIVER (Pierce Co.) from mouth to the military tank crossing bridge (located one mile upstream of mouth of Muck Creek) (786)	ALL SPECIES - Aug. 1-Nov. 30: night closure, anti-snagging rule, and barbless hooks required.		
	TROUT	July 1-Nov. 30	Min. size 14". Daily limit 2.
	Other Game Fish	July 1-Nov. 30	Statewide min. size/daily limit.
	All Game Fish	Dec 1-Jan. 31	Catch-and-release except up to 2 hatchery STEELHEAD may be retained.
	SALMON	July 1-Oct. 31	Min. size 12". Daily limit 6. Up to 3 adults may be retained, of which only 2 may be any combination of COHO and CHUM. Release wild CHINOOK.
	SALMON	Nov. 1-Jan. 31	Min. size 12". Daily limit 6. Up to 2 adults may be retained. Release wild CHINOOK.
from the military tank crossing bridge (located one mile upstream of mouth of Muck Creek, river mile 12) to 400' below LaGrande Powerhouse (786)	All Game Fish	July 1-Oct. 31	Catch-and-release except up to 2 hatchery STEELHEAD may be retained. Selective gear rules. Internal combustion motors prohibited.
Tanwax Creek (Thurston Co.)	All Game Fish	First Sat. in June-Oct. 31	Catch-and-release. Selective gear rules.
Ohop Creek (Pierce Co.)	All Game Fish	July 1-Oct. 31	Catch-and-release except up to 2 hatchery STEELHEAD may be retained. Selective gear rules. Internal combustion motors prohibited.
NISQUALLY RIVER (Pierce Co.) from Alder Reservoir upstream including Little Nisqually, Mineral Creek, and north fork Mineral Creek and all other tributaries of Alder Reservoir (786)	ALL SPECIES - selective gear rules. Internal combustion motors prohibited.		
	TROUT	First Sat. in June-Oct. 31	Min. size 14". Daily limit 2.
	All Game Fish	First Sat. in June-Oct. 31	Statewide min. size/daily limit.
MCALLISTER CREEK (Thurston Co.) from mouth to Olympia-Steilacoom Rd. Bridge (770)	ALL SPECIES - barbless hooks required.		
	TROUT	First Sat. in June-Oct. 31	Min. size 14". Daily limit 2. Selective gear rules.
	Other Game Fish	First Sat. in June-Oct. 31	Statewide min. size/daily limit. Selective gear rules.
	SALMON	July 1-Nov. 30	Min. size 12". Daily limit 6. Up to 2 adults may be retained.

Deep South Sound

WATER	SPECIES	SEASON	ADDITIONAL RULES
EATON CREEK (Thurston Co.) Lake St. Clair Tributary	All Game Fish	First Sat. in June-Oct. 31	Statewide min. size/daily limit. Selective gear rules.
WOODARD CREEK (Thurston Co.) WOODLAND CREEK (Thurston Co.) PERCIVAL CREEK (Thurston Co.)	TROUT Other Game Fish	First Sat. in June-Oct. 31 First Sat. in June-Oct. 31	Min. size 14". Daily limit 2. Selective gear rules. Statewide min. size/daily limit. Selective gear rules.
BLACK LAKE DITCH (Thurston Co.) from the confluence with Percival Creek upstream to Black Lake	TROUT Other Game Fish	First Sat. in June-Oct. 31 First Sat. in June-Oct. 31	Min. size 14". Daily limit 2. Selective gear rules. Statewide min. size/daily limit. Selective gear rules.
DESCHUTES RIVER (Thurston Co.) From the Old Hwy. 99 Bridge on Capitol Blvd. in Tumwater upstream to the Henderson Blvd. Bridge near Pioneer Park (728)	ALL SPECIES - barbless hooks required. TROUT Other Game Fish SALMON	First Sat. in June-Oct. 15 First Sat. in June-Oct. 15 July 1-Oct. 15	Catch-and-release. Statewide min. size/daily limit. Min. size 12". Daily limit 6. Up to 2 adults may be retained. Release COHO. Selective gear rules, except bait allowed Sept. 1-Oct. 15.
from the Henderson Blvd. Bridge near Pioneer Park upstream (728)	ALL SPECIES - selective gear rules. TROUT Other Game Fish SALMON	Year-round Year-round July 1-Oct. 15	<i>Internal combustion motors prohibited.</i> Catch-and-release. Statewide min. size/daily limit. Min. size 12". Daily limit 6. Up to 2 adults may be retained. Release COHO.
MCLANE CREEK (Thurston Co.) downstream of a line 100' upstream of and parallel to the south bridge on Hwy. 101			See Marine Area 13 Rules
from mouth (a line 100' upstream of and parallel to the south bridge on Hwy. 101) upstream	ALL SPECIES - Aug. 1-Oct. 31: night closure. TROUT Other Game Fish	First Sat. in June-Oct. 31 First Sat. in June-Oct. 31	Min. size 14". Daily limit 2. Selective gear rules. Statewide min. size/daily limit. Selective gear rules.
PERRY CREEK (Thurston Co.) from mouth to falls SCHNEIDER CREEK (Thurston Co.) from mouth to falls	TROUT Other Game Fish	First Sat. in June-Oct. 31 First Sat. in June-Oct. 31	Min. size 14". Daily limit 2. Selective gear rules. Statewide min. size/daily limit. Selective gear rules.
KENNEDY CREEK (Mason Co.) from mouth (500 yards east of the northbound Hwy. 101 Bridge) to northbound Hwy. 101 Bridge (754)	ALL SPECIES - Oct. 1-Dec. 31: night closure and anti-snagging rule. TROUT Other Game Fish SALMON	First Sat. in June-Last day in Feb. First Sat. in June-Last day in Feb. Oct. 1-Nov. 30	Min. size 14". Daily limit 2. Statewide min. size/daily limit. Min. size 12". Daily limit 6. Up to 2 adults may be retained. Release wild COHO.
from Hwy. 101 Bridge upstream to the Kennedy Creek Falls (RM 2.3) (754)	ALL SPECIES - Oct. 1-Dec. 31: night closure and anti-snagging rule. TROUT Other Game Fish	First Sat. in June-Last day in Feb. First Sat. in June-Last day in Feb.	Min. size 14". Daily limit 2. Selective gear rules. Statewide min. size/daily limit. Selective gear rules.
from falls upstream (754)	All Game Fish	First Sat. in June-Oct. 31	Statewide min. size/daily limit. Selective gear rules.
SKOOKUM CREEK (Mason Co.)	TROUT Other Game Fish	First Sat. in June-Oct. 31 First Sat. in June-Oct. 31	Catch-and-release. Selective gear rules. Statewide min. size/daily limit. Selective gear rules.
MILL CREEK (Mason Co.)	TROUT Other Game Fish	First Sat. in June-Last day in Feb. First Sat. in June-Oct. 31	Min. size 14". Daily limit 2. Selective gear rules. Statewide min. size/daily limit. Selective gear rules.
SHELTON CREEK (Mason Co.) GOLDSBOROUGH CREEK (Mason Co.) JOHNS CREEK (Mason Co.) CRANBERRY CREEK (Mason Co.) DEER CREEK (Mason Co.)	TROUT Other Game Fish	First Sat. in June-Oct. 31 First Sat. in June-Oct. 31	Catch-and-release. Selective gear rules. Statewide min. size/daily limit. Selective gear rules.
MALANEY CREEK (Mason Co.)	TROUT Other Game Fish	First Sat. in June-Oct. 31 First Sat. in June-Oct. 31	Catch-and-release. Selective gear rules. Statewide min. size/daily limit. Selective gear rules.
Uncle John and Campbell creeks (Mason Co.)	TROUT Other Game Fish	First Sat. in June-Oct. 31 First Sat. in June-Oct. 31	Catch-and-release. Selective gear rules. Statewide min. size/daily limit. Selective gear rules.
SHERWOOD CREEK (Mason Co.) COULTER CREEK (Mason/Kitsap Co.) ROCKY CREEK (Pierce/Kitsap Co.)	TROUT Other Game Fish	First Sat. in June-Oct. 31 First Sat. in June-Oct. 31	Catch-and-release. Selective gear rules. Statewide min. size/daily limit. Selective gear rules.
MINTER CREEK (Pierce/Kitsap Co.) from mouth to hatchery rack (778)	SALMON	Nov. 1-Dec. 31	Min size 12". Daily limit 4 CHUM only. Open only from mouth to fishing boundary markers located approximately 50' downstream of hatchery rack. Night closure.

East Kitsap

WATER	SPECIES	SEASON	ADDITIONAL RULES
BURLEY CREEK (Kitsap Co.) (708)	TROUT Other Game Fish	First Sat. in June-Oct. 31 First Sat. in June-Oct. 31	Min. size 14". Daily limit 2. Selective gear rules. Statewide min. size/daily limit. Selective gear rules.
EAST KITSAP STREAMS Olalla, Blackjack, and Salmonberry creeks (Kitsap Co.) Crescent Creek (Pierce Co.)	TROUT Other Game Fish	First Sat. in June-Oct. 31 First Sat. in June-Oct. 31	Min. size 14". Daily limit 2. Selective gear rules. Statewide min. size/daily limit. Selective gear rules.
DYES INLET STREAMS (Kitsap Co.) Barker, Clear, and Kitsap creeks	TROUT Other Game Fish	First Sat. in June-Oct. 31 First Sat. in June-Oct. 31	Min. size 14". Daily limit 2. Selective gear rules. Statewide min. size/daily limit. Selective gear rules.
NORTH KITSAP STREAMS (Kitsap Co.) Illahee, Little Scandia, Big Scandia, Dogfish, Groves, and Eglon creeks, and all streams on Bainbridge Island	TROUT Other Game Fish	First Sat. in June-Oct. 31 First Sat. in June-Oct. 31	Min. size 14". Daily limit 2. Selective gear rules. Statewide min. size/daily limit. Selective gear rules.

Hood Canal

WATER	SPECIES	SEASON	ADDITIONAL RULES
BEAVER PONDS (Kitsap/Mason Co.) ponds on Tahuya Peninsula west of Hwy. 3	TROUT Other Game Fish	4th Sat. in Apr.-Oct. 31 4th Sat. in Apr.-Oct. 31	No min. size. Daily limit 2. Statewide min. size/daily limit.
BEAVER PONDS (Kitsap/Mason Co.) ponds east of Hwy. 3	TROUT Other Game Fish	First Sat. in June-Oct. 31 First Sat. in June-Oct. 31	No. min. size. Daily limit 2. Statewide min. size/daily limit.
GAMBLE CREEK (Kitsap Co.)	All Game Fish	First Sat. in June-Oct. 31	Catch-and-release. Selective gear rules.
BIG BEEF CREEK (Kitsap Co.) from Seabeck Hwy. Bridge to Lake Symington	CLOSED WATERS - Aug. 1-Aug. 31: All Game Fish	First Sat. in June-Aug. 31	<i>within 100' of the Seabeck Hwy. NW Big Beef Creek Bridge.</i> Catch-and-release. Selective gear rules. Internal combustion motors prohibited.
from Lake Symington upstream	TROUT Other game fish	First Sat. in June-Oct. 31 First Sat. in June-Oct. 31	Catch-and-release. Selective gear rules. Statewide minimum size/daily limit. Selective gear rules.
ANDERSON CREEK (Kitsap Co.)	All Game Fish	First Sat. in June-Oct. 31	Catch-and-release. Selective gear rules.
DEWATTO RIVER (Mason Co.) from mouth to Dewatto-Holly Rd. Bridge (732)	ALL SPECIES - selective gear rules. All Game Fish All Game Fish SALMON	First Sat. in June-Aug. 15 Oct. 1-Oct. 31 Oct. 1-Oct. 31	<i>Oct. 1-Oct. 31: night closure.</i> Catch-and-release. Internal combustion motors prohibited. Catch-and-release. Internal combustion motors prohibited. Min. size 12". Daily limit 2 COHO only.
from Dewatto-Holly Rd. Bridge upstream (732)	All Game Fish	First Sat. in June-Oct. 31	Catch-and-release. Selective gear rules.
RENDSLAND CREEK (Mason Co.)	All Game Fish	First Sat. in June-Oct. 31	Catch-and-release. Selective gear rules.
TAHUYA RIVER (Mason Co.) from mouth to steel bridge approximately 1 mile above North Shore Rd. Bridge (878)	ALL SPECIES - selective gear rules. All Game Fish All Game Fish SALMON	First Sat. in June-Aug. 15 Oct. 1-Oct. 31 Oct. 1-Oct. 31	<i>Internal combustion motors prohibited. Oct. 1-Oct. 31: night closure.</i> Catch-and-release. Catch-and-release. Min. size 12". Daily limit 2 COHO only.
from steel bridge approximately 1 mile above North Shore Rd. Bridge upstream (878)	ALL SPECIES - selective gear rules. All Game Fish All Game Fish	First Sat. in June-Aug. 15 Oct. 1-Oct. 31	<i>Internal combustion motors prohibited. Oct. 1-Oct. 31: night closure.</i> Catch-and-release. Catch-and-release.
STIMSON CREEK (Mason Co.)	All Game Fish	First Sat. in June-Oct. 31	Catch-and-release. Selective gear rules.
LITTLE MISSION CREEK (Mason Co.) from falls upstream	All Game Fish	First Sat. in June-Oct. 31	Catch-and-release. Selective gear rules.
BIG MISSION CREEK (Mason Co.)	All Game Fish	First Sat. in June-Oct. 31	Catch-and-release. Selective gear rules.
UNION RIVER (Mason Co.) from mouth to North Shore Rd. Bridge (880)	All Game Fish STURGEON	First Sat. in June-Aug. 15 June 1-June 30	Catch-and-release. Min. size 38" fork length. Max. size 54" fork length. Daily limit 1.
from North Shore Rd. Bridge to the lower bridge on the Old Belfair Hwy. (880)	All Game Fish	First Sat. in June-Aug. 15	Catch-and-release. Selective gear rules. Internal combustion motors prohibited.
from lower bridge on the Old Belfair Hwy. to City of Bremerton drinking water watershed boundary (880)	All Game Fish	First Sat. in June-Oct. 31	Catch-and-release. Selective gear rules. Internal combustion motors prohibited.

Hood Canal (continued)

WATER	SPECIES	SEASON	ADDITIONAL RULES
SKOKOMISH RIVER (Mason Co.) from mouth to Hwy. 106 Bridge (834)	ALL SPECIES - Aug. 10-Nov. 30: <i>night closure, anti-snagging rule, and single-point barbless hooks required.</i> Aug. 10-Dec. 15: <i>terminal gear (hooks, weights, lures, or baits) and line must not be within 25' of tribal gillnets.</i> We each must clean up after ourselves and pets. Refer to Human and Pet Waste Advisory (page 10).		
	All Game Fish	First Sat. in June-July 31	Catch-and-release.
	All Game Fish	Aug. 1-Sept. 30: CLOSED.	
	All Game Fish	Oct. 1-Dec. 15	Catch-and-release.
	SALMON	Aug. 10-Sept. 5	Min. size 12". Daily limit 2. Release wild CHINOOK and CHUM. Only fish hooked inside the mouth may be retained. Anglers must retain the first 2 SALMON, if legal to do so, and stop fishing.
	SALMON	Sept. 16-Dec. 15	Min. size 12". Daily limit 6. Up to 4 adults may be retained. Release CHINOOK. Oct. 1-Oct. 15: release CHUM.
from Hwy. 106 Bridge to Hwy. 101 Bridge (834)	ALL SPECIES - Aug. 10-Nov. 30: <i>night closure, anti-snagging rule, and single-point barbless hooks required.</i> Aug. 10-Dec. 15: <i>terminal gear (hooks, weights, lures, or baits) and line must not be within 25' of tribal gillnets.</i> We each must clean up after ourselves and pets. Refer to Human and Pet Waste Advisory (page 10).		
	All Game Fish	First Sat. in June-July 31	Catch-and-release.
	All Game Fish	Aug. 1-Sept. 30: CLOSED.	
	All Game Fish	Oct. 1-Dec. 15	Catch-and-release.
	SALMON	Aug. 10-Sept. 3	Min. size 12". Daily limit 2. Release wild CHINOOK and CHUM. Closed Monday through Thursday weekly, except open Monday Sept. 3. Only fish hooked inside the mouth may be retained. Anglers must retain the first 2 SALMON, if legal to do so, and stop fishing.
	SALMON	Oct. 1-Dec. 15	Min. size 12". Daily limit 6. Up to 4 adults may be retained. Release CHINOOK. Oct. 1-Oct. 15: release CHUM.
from Hwy. 101 Bridge to forks (834)	All Game Fish	First Sat. in June-Oct. 31	Catch-and-release. Selective gear rules. Internal combustion motors prohibited.
SKOKOMISH RIVER, NORTH FORK (Mason Co.) from mouth to lower dam (834)	All Game Fish	First Sat. in June-Oct. 31	Catch-and-release. Selective gear rules. Internal combustion motors prohibited.
above Lake Cushman to Olympic National Park boundary (834)	All Game Fish	First Sat. in June-Aug. 31	Catch-and-release. Selective gear rules. Internal combustion motors prohibited.
SKOKOMISH RIVER, SOUTH FORK (Mason Co.) from mouth to LeBar Creek (834)	All Game Fish	First Sat. in June-Oct. 31	Catch-and-release. Selective gear rules. Internal combustion motors prohibited.
from Rule Creek upstream (834)	ALL SPECIES - <i>selective gear rules.</i> <i>Internal combustion motors prohibited.</i>		
	TROUT	First Sat. in June-Oct. 31	Min. size 12". Daily limit 2.
	Other Game Fish	First Sat. in June-Oct. 31	Statewide min. size/limit. Selective gear rules.
LeBar Creek (Mason Co.) upstream of falls at river mile 1	All Game Fish	First Sat. in June-Oct. 31	Statewide min. size/daily limit.
Cedar and Pine creeks (Mason Co.)	All Game Fish	First Sat. in June-Oct. 31	Statewide min. size/daily limit.
Church Creek (Mason Co.) upstream of bridge on USFS road #2361	All Game Fish	First Sat. in June-Oct. 31	Statewide min. size/daily limit.
LILLIWAUP RIVER (Mason Co.) from mouth to 200' below falls	All Game Fish	First Sat. in June-Aug. 31	Catch-and-release. Selective gear rules. Internal combustion motors prohibited.
from falls upstream	All Game Fish	First Sat. in June-Oct. 31	Statewide min. size/daily limit.
JORSTED CREEK (Mason Co.)	All Game Fish	First Sat. in June-Oct. 31	Catch-and-release. Selective gear rules.
HAMMA HAMMA RIVER (Mason Co.) from mouth to 400' below falls	All Game Fish	First Sat. in June-Aug. 31	Catch-and-release. Selective gear rules. Internal combustion motors prohibited.
from falls upstream	All Game Fish	First Sat. in June-Oct. 31	Statewide min. size/daily limit.
Jefferson, Lena, and Washington creeks (Mason Co.)	All Game Fish	First Sat. in June-Oct. 31	Statewide min. size/daily limit.
FULTON CREEK (Mason Co.) mouth to falls	All Game Fish	First Sat. in June-Oct. 31	Catch-and-release. Selective gear rules.
upstream of falls at river mile 0.8	All Game Fish	First Sat. in June-Oct. 31	Statewide min. size/daily limit.
DUCKABUSH RIVER (Jefferson Co.) from mouth to Mason Co. PUD #1 overhead electrical distribution line (736)	All Game Fish	First Sat. in June-Aug. 31	Catch-and-release. Selective gear rules. Internal combustion motors prohibited.
	SALMON	Nov. 1-Dec. 15	Min. size 12". Daily limit 2 CHUM only.
from Mason Co. PUD #1 overhead electrical distribution line to the Olympic National Park boundary (736)	All Game Fish	First Sat. in June-Aug. 31	Catch-and-release. Selective gear rules. Internal combustion motors prohibited.
DOSEWALLIPS RIVER (Jefferson Co.) from mouth to Hwy. 101 Bridge (734)	All Game Fish	First Sat. in June-Aug. 31	Catch-and-release. Selective gear rules. Internal combustion motors prohibited.
	SALMON	Nov. 1-Dec. 15	Min. size 12". Daily limit 2 CHUM only.
from Hwy. 101 Bridge to the Olympic National Park boundary about ¼ mile downstream of falls (734)	All Game Fish	First Sat. in June-Aug. 31	Catch-and-release. Selective gear rules.
Rocky Brook Creek (Jefferson Co.) from falls upstream	All Game Fish	First Sat. in June-Oct. 31	Statewide min. size/daily limit.

Hood Canal (continued)

WATER	SPECIES	SEASON	ADDITIONAL RULES
QUILCENE RIVER (Jefferson Co.) from mouth to Rodgers St. (812)	All Game Fish	First Sat. in June-Aug. 15	Catch-and-release. Selective gear rules. Internal combustion motors prohibited.
from Rodgers St. to Hwy. 101 (812)	WDFW access easement is from Hwy. 101 Bridge downstream approximately 1 mile on north side of river only.		
	CLOSED WATERS - from Hwy. 101 Bridge to electric weir at Quilcene National Fish Hatchery.		
	ALL SPECIES - First Sat. in June-Aug. 15: selective gear rules. Internal combustion motors prohibited. Aug. 16-Oct. 31: night closure and only 1 single-point barbless hook may be used.		
	All Game Fish	First Sat. in June-Oct. 31	Catch-and-release.
	SALMON	Aug. 16-Oct. 31	Min. size 12". Daily limit 4 COHO only. Only fish hooked inside the mouth may be retained.
from electric weir at Quilcene National Fish Hatchery to upper boundary of Falls View Campground (812)	All Game Fish	First Sat. in June-Oct. 31	Catch-and-release. Selective gear rules.
from upper boundary of Falls View Campground upstream (812)	All Game Fish	First Sat. in June-Oct. 31	Statewide min. size/daily limit.
Penny Creek (Jefferson Co.)	All Game Fish	First Sat. in June-Oct. 31	Statewide min. size/daily limit.
LITTLE QUILCENE RIVER (Jefferson Co.) from mouth to the Little Quilcene River Bridge on Penny Creek Rd. (766)	CLOSED WATERS - Sept. 1-Oct. 31: mouth to Hwy. 101 Bridge.		
	All Game Fish	First Sat. in June-Oct. 31	Catch-and-release. Selective gear rules. Internal combustion motors prohibited.
from Little Quilcene River Bridge on Penny Creek Rd. upstream (766)	All Game Fish	First Sat. in June-Oct. 31	Statewide min. size/daily limit.
Leland, Ripley, and Howe creeks (Jefferson Co.)	All Game Fish	First Sat. in June-Oct. 31	Catch-and-release. Selective gear rules.
DONOVAN CREEK (Jefferson Co.)	All Game Fish	First Sat. in June-Oct. 31	Catch-and-release. Selective gear rules.
TARBOO CREEK (Jefferson Co.)	All Game Fish	First Sat. in June-Oct. 31	Catch-and-release. Selective gear rules.
THORNDYKE CREEK (Jefferson Co.)	All Game Fish	First Sat. in June-Oct. 31	Catch-and-release. Selective gear rules.
SHINE CREEK (Jefferson Co.)	All Game Fish	First Sat. in June-Oct. 31	Catch-and-release. Selective gear rules.
LUDLOW CREEK (Jefferson Co.)	All Game Fish	First Sat. in June-Oct. 31	Catch-and-release. Selective gear rules.

Strait of Juan de Fuca

WATER	SPECIES	SEASON	ADDITIONAL RULES
CHIMACUM CREEK (Jefferson Co.) from mouth to Ness's Corner Rd.	All Game Fish	First Sat. in June-Aug. 31	Catch-and-release. Selective gear rules.
from Ness's Corner Rd. upstream, including all forks	All Game Fish	First Sat. in June-Oct. 31	Catch-and-release. Selective gear rules.
JIMMYCOMELATELY CREEK (Clallam Co.) from mouth to confluence with East Fork	All Game Fish	First Sat. in June-Aug. 31	Catch-and-release. Selective gear rules.
from confluence with East Fork upstream, including East Fork	All Game Fish	First Sat. in June-Oct. 31	Statewide min. size/daily limit.
DUNGENESS RIVER (Clallam Co.) from mouth to hatchery intake pipe at river mile 11.3 (738)	TROUT Other Game Fish SALMON	Oct. 16-Jan. 31 Oct. 16-Jan. 31 Oct. 16-Dec. 31	Min. size 14". Daily limit 2. Statewide min. size/daily limit. Min. size 12". Daily limit 4 COHO only.
from the hatchery intake pipe at river mile 11.3 to the forks at Dungeness Forks Campground (738)	TROUT Other Game Fish	Oct. 16-Jan. 31 Oct. 16-Jan. 31	Min. size 14". Daily limit 2. Statewide min. size/daily limit.
from Gold Creek upstream (738)	All Game Fish	First Sat. in June-Oct. 31	Statewide min. size/daily limit.
Gray Wolf River (Clallam Co.) from bridge at river mile 1 upstream	All Game Fish	First Sat. in June-Oct. 31	Catch-and-release. Selective gear rules.
MCDONALD CREEK (Clallam Co.)	All Game Fish	First Sat. in June-Oct. 31	Catch-and-release. Selective gear rules.
SIEBERT CREEK (Clallam Co.)	All Game Fish	First Sat. in June-Oct. 31	Catch-and-release. Selective gear rules.
MORSE CREEK (Clallam Co.) from mouth to Port Angeles Dam (782)	TROUT Other Game Fish	Dec. 1-Jan. 31 Dec. 1-Jan. 31	Min. size 14". Daily limit 2. Statewide min. size/daily limit.
from Port Angeles Dam upstream (782)	All Game Fish	First Sat. in June-Oct. 31	Statewide min. size/daily limit.
PEABODY CREEK (Clallam Co.)	Juvenile anglers only (under 15 years old).		
	All Game Fish	First Sat. in June-Oct. 31	Statewide min. size/daily limit.

Strait of Juan de Fuca (continued)

WATER	SPECIES	SEASON	ADDITIONAL RULES
VALLEY CREEK (Clallam Co.)	Juvenile anglers only (under 15 years old).		
	All Game Fish	First Sat. in June-Oct. 31	Statewide min. size/daily limit.
ELWHA RIVER (Clallam Co.)	Reminder - CLOSED to fishing		
SALT CREEK (Clallam Co.) from mouth to bridge on Hwy. 112 (814)	All Game Fish All Game Fish	First Sat. in June-Oct. 31 Nov. 1-Jan. 31	Catch-and-release. Selective gear rules. Catch-and-release except up to 2 hatchery STEELHEAD may be retained. Selective gear rules.
LYRE RIVER (Clallam Co.) from mouth to falls near river mile 3 (768)	TROUT Other Game Fish	First Sat. in June-Jan. 31 First Sat. in June-Jan. 31	Min. size 14". Daily limit 2. Statewide min. size/daily limit.
from falls near river mile 3 to Olympic National Park boundary	All Game Fish	First Sat. in June-Oct. 31	Catch-and-release. Selective gear rules.
EAST TWIN RIVER (Clallam Co.)	All Game Fish	First Sat. in June-Oct. 31	Catch-and-release. Selective gear rules.
WEST TWIN RIVER (Clallam Co.)	All Game Fish	First Sat. in June-Oct. 31	Catch-and-release. Selective gear rules.
DEEP CREEK (Clallam Co.) (726)	All Game Fish	Dec. 1-Jan. 31	Catch-and-release except up to 2 hatchery STEELHEAD may be retained. Selective gear rules.
PYSHT RIVER (Clallam Co.) (810)	All Game Fish TROUT Other Game Fish	First Sat. in June-Oct. 31 Nov. 1-Jan. 31 Nov. 1-Jan. 31	Catch-and-release. Selective gear rules. Min. size 14". Daily limit 2. Statewide min. size/daily limit.
CLALLAM RIVER (Clallam Co.) (718)	All Game Fish TROUT Other Game Fish	First Sat. in June-Oct. 31 Nov. 1-Jan. 31 Nov. 1-Jan. 31	Catch-and-release. Selective gear rules. Min. size 14". Daily limit 2. Statewide min. size/daily limit.
HOKO RIVER (Clallam Co.) from mouth to cement bridge on Lake Ozette Hwy. (upper Hoko Bridge) (752)	Lawful to fish up to the hatchery fish ladder, except CLOSED to fishing from shore on the hatchery side of the river from the ladder downstream 100'. ALL SPECIES - Sept. 1-Oct. 31: fly fishing only.		
	TROUT Other Game Fish	First Sat. in June-Mar. 15 First Sat. in June-Mar. 15	Min. size 14". Daily limit 2. Statewide min. size/daily limit.
from upper Hoko Bridge to Ellis Creek Bridge (river mile 18.5) (752)	All Game Fish	First Sat. in June-Mar. 31	Catch-and-release except up to 2 hatchery STEELHEAD may be retained. Fly fishing only.
LITTLE HOKO RIVER (Clallam Co.)	All Game Fish	First Sat. in June-Oct. 31	Catch-and-release. Selective gear rules.
SEKIU RIVER (Clallam Co.) from mouth to forks (818)	All Game Fish TROUT Other Game Fish	First Sat. in June-Oct. 31 Nov. 1-Jan. 31 Nov. 1-Jan. 31	Catch-and-release. Selective gear rules. Min. size 14". Daily limit 2. Statewide min. size/daily limit.
from forks upstream (818)	All Game Fish	First Sat. in June-Oct. 31	Catch-and-release. Selective gear rules.

fish

WASHINGTON

**a good day
boating can be
your best
day fishing!**



**BUY YOUR FISHING LICENSE
TODAY!**

**Millions of fish are
waiting to be caught in
thousands of Washington waters.**

The whole family can get in on the fishing action, but only those 15 and older need a license (rates are reduced for youth and seniors.)