

# PROTECT WASHINGTON'S ROCKFISH

Rockfish are an incredibly diverse and important group of marine fish in our Pacific waters. A number of species are in low abundance in both Puget Sound and the Washington coast. To aid their recovery, fisheries in these areas have ended or been restricted. Read on to learn how you can help conserve Washington's rockfish. See the WDFW web page for more information: <http://wdfw.wa.gov/fishing/rockfish/mortality.html>



SEND THAT FISH DOWN

As fish are brought to the surface, gases in the swim bladder expand causing the stomach and eyes to bulge. This is known as **barotrauma**.



Notice the everted stomach and bulging eyes.



## IDENTIFY AND REPORT

**CANARY**  
3 orange stripes across head. Lateral line in clear gray zone & orange mottling.



**YELLOWEYE**  
Brilliant yellow eye & raspy ridges above eye. Fins usually have black edges.



**BOCACCIO**



Lower jaw greatly projecting & elongated body.

**VERMILION**



Reddish & mottled with gray.

**Rockfish can be challenging to identify.** Anglers are encouraged to learn key features and use picture references to aid identification. **Accurately identify and report all caught & released rockfish.** Data from recreational anglers are critical to scientific evaluations that determine population health. Report all rockfish caught and released to WDFW port samplers. **Support rockfish conservation.** Be an informed angler; support the continued survival of rockfish by knowing how to properly identify, report, and, if necessary, release these species.

Sending fish with barotrauma to their caught depth recompresses them, improving their ability to stay down. There are several devices that you can use:



### DEPTH PRESSURE RELEASE

These devices grasp the fish on the jaw and release automatically once your desired depth is reached.



### INVERTED HOOK

An inverted barbless hook is inserted in the lower lip. Once back to depth, release the fish with a sharp jerk on the line.



### BOTTOM CONTACT RELEASE

A weight secures the grip as the fish descends. Once the weight contacts the sea floor, it releases the fish.



### DO NOT VENT

Puncturing the fish's swim bladder or bulging organs is not recommended as it can cause serious injury or introduce infection.

## tips

- **Protect sensitive species by avoiding them-** if you are fishing in an area where you are catching fish you can't keep, it's best to move to another location.
- **Get the rockfish down quickly-** have your descending device ready to use. **Fish returned to depth within 2 minutes have a much better chance of survival.**

- **Avoid rough handling-** avoid dropping fish; touch fish as little as possible. Use a wet towel or wet your hands to avoid removing the protective slime coat.
- **Return fish back to the depth of capture or at least 60 feet.**
- **Use the descending device that works for you-** consider the fishing location, depth, and type of boat you have.

# Rockfish Identification

## Yelloweye Rockfish

Orange-red to yellow body color, bright yellow eye, and fins may be tinged with black. Raspy ridges above eye, rear of anal fin vertical. Also called rasphead rockfish and red snapper. Typically the largest species of rockfish.



## Copper Rockfish

Body variable in color with light colored stripe along the rear of the lateral line. Two dark bars radiating from eye.

## Black Rockfish

Body black or grey in color. Also called seabass and black bass. Large mouth, rounded anal fin.



## Yellowtail Rockfish

Olive green body with yellow-green fins. May have knob at tip of lower jaw. Rear edge of anal fin vertical.

## Blue Rockfish

Body is blue or black. Forehead has several diagonal bars. Has a small mouth. The anal fin is vertical or slanted posteriorly.



## China Rockfish

Body blue or black spotted with yellow and white. Prominent yellow stripe extending from top of back to along lateral line to caudal fin.

## Vermillion Rockfish

Body dark red and mottled gray. Red mouth and underside of jaw is rough. Fins may be edged with black. Anal fin rounded.



## Bocaccio Rockfish

Body orange, olive, or brown. Large mouth extending past rear of eye, and projecting lower jaw.

## Canary Rockfish

Bright orange or yellow body, mottled with grey. Fins are orange without black edge. Three orange stripes across the head. Chin smooth to the touch. Anal fin sharp and angular.



## Quillback Rockfish

Body brown with yellow mottling. High fin on back with yellow mottling. May have freckles on head and throat. Two light saddle patches on top of back.



## Tiger Rockfish

Body pink to red with five red to black vertical stripes. Strong ridges between eyes. Two dark bars radiating from eye.



Photos courtesy of Steve Axtell, and Victoria Okimura

# Salmon Identification

## OCEAN PHASE



### Chinook Salmon

Large black spots on back, dorsal fin, and both the upper and lower lobes of the tail. Black mouth with a black gum line. Average size scales. Silver pigment on the tail. Prominent teeth.



### Coho Salmon

Black spots on back with a few spots on the upper portion of the tail. White mouth with a white gum line and dark tongue. Average size scales. Silver pigment on the tail.



### Chum Salmon

No prominent spots on back or tail (small speckles may be present). White mouth with a white gum line and dark tongue. Large scales. Caudal peduncle (tail base) is slender. Silver pigment on the tail.



### Pink Salmon

Generally large black spots on back and heavy oval shaped black blotches on the upper and lower lobes of the tail. White mouth with a black gum line and tongue. Very small scales. No silver pigment on the tail. Flexible (rubbery) lower jaw.



### Sockeye Salmon

No prominent spots on back or tail (small speckles may be present). White mouth with a white gum line and dark tongue. Average size scales. Prominent gold-colored eyes. No silver pigment on the tail. Small teeth.

## SPAWNING PHASE



### Chinook Salmon

Chinook salmon do not display the conspicuous morphological changes of pink, chum and sockeye salmon during the spawning stage. Typically Chinook turn from silvery bright ocean coloration to a darker bronze color. Large spots are found on the back and both lobes of the tail. Mouth is black with a black to grey gum line.



### Coho Salmon

Mature coho salmon display a greenish-black head with a red to maroon colored body. Spots are found on the back and only upper lobe of the tail. The mouth is black with a white gum line. Typically male coho display brighter coloration and have a more pronounced elongated hooked snout.



### Chum Salmon

Chum salmon display characteristic olive-green vertical markings on the sides of the body as they approach spawning. There are no spots on the back or tail. Male chum salmon develop a more elongated snout with large canine-like teeth and also have reddish-purple vertical markings in addition to the olive-green markings.



### Pink Salmon

The majority of pink salmon return on odd-numbered years. Pink salmon have large oblong spots on the back and both lobes of the tail. Pink salmon, like most other salmon transform from silvery bright ocean coloration to a more dull and darker color. Males develop a pronounced hump as they approach spawning.



### Sockeye Salmon

Sockeye turn brick red to scarlet red along their body with a greenish head. Female coloration is often more dull colored. There are no distinct spots on the back or tail. Sockeye can be found spawning in both lakes, streams, and rivers, while other Pacific salmon spawn in streams and rivers.

# Atlantic Salmon



Male Atlantic salmon



Female Atlantic salmon

Atlantic salmon have large black spots on the gill covers and back, and rarely any spots on the tail fin. Their scales are large, there is no red stripe along the lateral line, and they have 8-10 anal fin rays. Atlantic salmon may be taken from marine waters during any open salmon season, and from anadromous (not landlocked) freshwater during any open salmon or trout season. Anglers may not, however, continue to fish for Atlantic salmon after a daily limit of another species of salmon has been retained. In landlocked lakes, Atlantic salmon may be taken as part of the trout daily limit. Seasons and size limits in place for trout apply to Atlantic salmon in landlocked lakes. Opportunities to harvest Atlantic salmon beyond those listed in the pamphlet will be announced to the news media and carried on WDFW's recreational fishing hotline. Please report sightings to (360) 902-2700.

## Chinook, Coho, and Pink Salmon Identification

### Chinook

**Jaw-** has a dark mouth and black gums at the base of its teeth. Immature chinook are known as a "blackmouth."



**Tail-** both the upper and lower lobes of the tail are covered with spots and silver is prominent.



### Coho

**Jaw-** mouth is white and the gum line is almost white, but the tongue may be black. The teeth are sharp and strong.



**Tail-** has just a few scattered spots, usually on the upper lobe, with silver streaks. It has a wide caudal peduncle.



### Pink

**Jaw-** mouth of a pink is white, but the gums and tongue are black, as they are in a Chinook. It does not have "teeth" on its tongue.

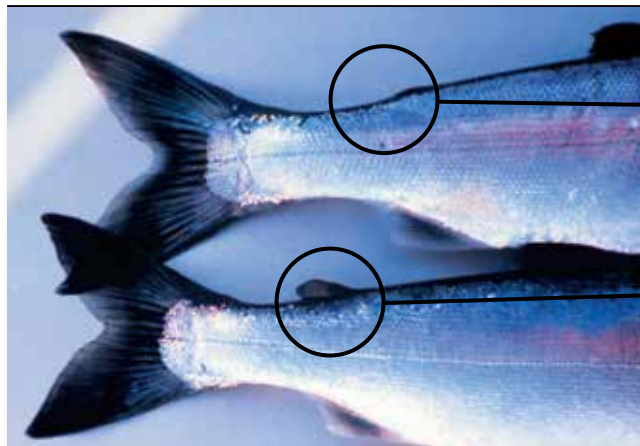


**Tail-** is covered with large oval spots. It does not have silver on the tail. The scales are very small compared to other salmon of the same size.



## Wild/Hatchery Identification

In order to provide salmon and steelhead fishing opportunities, WDFW and the Tribes have marked salmon and steelhead by clipping the adipose fin (a small fatty fin directly behind the dorsal fin). In areas designated "release wild <insert fish name>", fin-clipped salmon and steelhead are the only fish that may be retained. The picture to the right shows a wild coho salmon and a fin-clipped or hatchery coho salmon. Please be careful in releasing wild fish— they are your fishing future! For tips on the best way to release fish, please see page 13. In Marine Areas 5-13, it is illegal to bring a wild salmon or a species of salmon aboard a vessel if it is unlawful to retain those salmon. "Aboard a vessel" is defined as inside the gunwale. In Marine Area 2-2, it is unlawful to totally remove salmon from the water if it is illegal to retain those fish, except anglers fishing from boats 30' or longer are exempt.



**Hatchery coho**  
Adipose fin has been clipped – leaving a healed scar in its place.

**Wild coho**  
Intact adipose fin.

Learn more by visiting: <http://wdfw.wa.gov/fishing/salmon/identification.html>

# Marine Area Rules

## 1 • • • • Season and Daily Hours:

During an open season, marine waters are open 24 hours per day, except as noted for night closures.

## 2 • • • • Quota Management:

SALMON, HALIBUT, and some SHELLFISH are managed by quotas in many marine areas. These fisheries close when the quotas have been taken. Closures will be announced to local news media and will be included in the Fishing Hotline and Shellfish Rule Change Hotline messages.

**NOTE: Emergency rules may occur throughout the year and will supersede the rules contained in this pamphlet.** Changes can be found by calling the WDFW Fishing Hotline (360) 902-2500 or Shellfish Rule Change Hotline (866) 880-5431, contacting statewide customer service (360) 902-2700, or by visiting the WDFW website <http://wdfw.wa.gov>.

Rules listed below are General Rules. Specific Area Rules are listed by area.

### Species Rules

Hatchery **STEELHEAD** may be caught and released until the daily limit is retained. If a fish has swallowed the hook or is hooked in the gill, eye, or tongue, it should be kept if legal to do so. Wild **STEELHEAD** must be released.

**SALMON** - Barbless hooks only. **Single-point barbless hooks and a hand-held rod and line must be used in Areas 1-13.** Minimum size for **CHINOOK** in Areas 1-4 is 24", in Areas 5-13, 22", except no minimum size in the Hoodport Hatchery Zone. Minimum size for **COHO** in Areas 1-4 is 16"; except in Area 2-1 after July 31 and Area 2-2 east of the buoy 13 line after Aug. 15, the minimum size is 12" for all **SALMON**. Other Marine Areas and species - no minimum size. Handling Rule: in Areas 5-13, it is illegal to bring a wild **SALMON** or a species of **SALMON** aboard a vessel if it is unlawful to retain those **SALMON**. "Aboard a vessel" is defined as inside the gunwale. Also see special Handling Rule for Area 2-2 for Sept. 16-Nov. 30.

**WHITE STURGEON** - Only one single-point barbless hook and bait is allowed when fishing for **STURGEON**. Catch-and-release open year-round. Green **STURGEON** may not be retained.

**HALIBUT** - Hook and line angling and spearfishing only. A hand-held line is permitted. Only one line with up to two hooks may be used. **HALIBUT** may be shot or harpooned while landing. May not be landed in a port closed to **HALIBUT** fishing except **HALIBUT** lawfully caught in Canada; angler must have Canadian license. See page 12, *Fish & Shellfish caught in Canada*.

**BOTTOMFISH, TUNA, AND MACKEREL** - Hook and line angling, spearfishing, and bow and arrow fishing only.

**ROCKFISH** - You may not land **YELLOWEYE** or **CANARY** rockfish into any port in Washington. Unlawful to fish for, retain, or possess rockfish in Areas 6-13.

#### UNCLASSIFIED MARINE FISH - CLOSED

**OTHER FOOD FISH** - These are species which occur in our waters irregularly, usually in coastal areas and include **BARRACUDA**, **WHITE SEA BASS**, **BONITO**, and **POMFRET**. Daily limit is 2 of each species.

**SHARK CLOSURE - CLOSED** to fishing for, retention, or possession of **SIXGILL**, **SEVENGILL**, and **THRASHER SHARKS**. **SIXGILL SHARK** may not be removed from the water.

### Species Rules

**FORAGE FISH** - Forage fish jig or forage fish dip net only except **ANCHOVY** and **SARDINE** may be taken by a cast net in Areas 1-4. Only one net may be used at a time. Dip net gear must be held by the rigid handle at all times and may not be used from a vessel while under power. Cast net gear must be in immediate control at all times with retrieval cord in hand. Anglers with the reduced-fee license or a Designated Harvester Card may use a forage fish dip net with a hand-operated gate. Jig gear may have up to three treble hooks or nine single-point hooks, not to exceed  $\frac{3}{8}$ " between point and shank. While fishing in Areas 5-11 & 13, a second line using forage fish jig gear may be used to fish for forage fish.

You may use forage fish jig gear in Columbia River waters from the Buoy 10 line to the Rocky Point/Tongue Point line.

### Possession Limits

**VESSEL LIMITS MARINE AREAS 1-6:** Anglers aboard a boat may only possess one daily limit of fish or **SHELLFISH** in fresh form.

**SALMON** - Two daily limits of fresh **SALMON**. An additional 40 pounds of salmon may be possessed in a frozen or processed form (see pages 10-11).

**TROUT** - Two daily limits of hatchery **STEELHEAD**.

**STURGEON** - **Catch-and-release only.**

**BOTTOMFISH** - Two daily limits in any form.

**HALIBUT** - Two daily limits in any form, except only one limit while aboard the fishing vessel. For **HALIBUT** caught in Canadian waters, contact Department of Fisheries and Oceans Canada (DFO) or visit their website at [http://www.pac.dfo-mpo.gc.ca/recfish/Opportunities/finfish\\_e.htm](http://www.pac.dfo-mpo.gc.ca/recfish/Opportunities/finfish_e.htm) for updated Canadian regulations.

**TUNA** - **ALBACORE**, and **MACKEREL** - No possession limit or daily limit. **YELLOWFIN**, **SKIPJACK**, and **NORTHERN BLUEFIN**. No possession limit, daily limit 2 each.

**SHELLFISH** - One daily limit of fresh **SHELLFISH**. Additional **SHELLFISH** may be possessed in a frozen or processed form. See page 126 for Shellfish/Seaweed rules and page 128 for the shellfish health advisory.

**FORAGE FISH** (**HERRING**, **ANCHOVIES**, **SARDINES**, **SAND LANCE**, and **SMELT**) - Two daily limits in fresh form. Additional **FORAGE FISH** may be possessed in frozen or processed form. **CLOSED to fishing for Columbia River SMELT (eulachon)**. See description on next page.

### Tackle/Gear Rules

**ALL FISHING GEAR** - Must be kept in immediate control, and gear may not be left unattended while fishing.

**HOOK AND LINE ANGLING** - Unless noted differently, only one line with up to 2 hooks is allowed.

**Barbless hooks are required for all species in Marine Areas 5-13, except forage fish jig gear.**

**When fishing for SALMON in Marine Areas 1-13, single-point barbless hooks must be used.**

**FORAGE FISH DIPNET** - A section of netting (maximum mesh size is  $\frac{5}{8}$ " stretched mesh) distended by a rigid frame not exceeding 36" across and directly attached to a rigid handle. May only be used for forage fish or squid.

**FORAGE FISH CAST NET** - A section of netting (maximum mesh size is 1" stretched mesh) no larger than 10' in diameter with retrieval cord. May only be used in Marine Areas 1-4. May only be used for **ANCHOVY** and **SARDINE**.

**LANDING A FISH** - A club or dipnet (landing net) may be used to assist landing a legal fish taken by legal gear. A gaff may only be used to land a legally hooked **HALIBUT**, **TUNA**, or **DOGFISH SHARK** that will be retained. **HALIBUT** may be shot or harpooned while landing.

**DOWNRIGGERS** - May be used with a line if the line releases from the downrigger while playing and landing the fish.

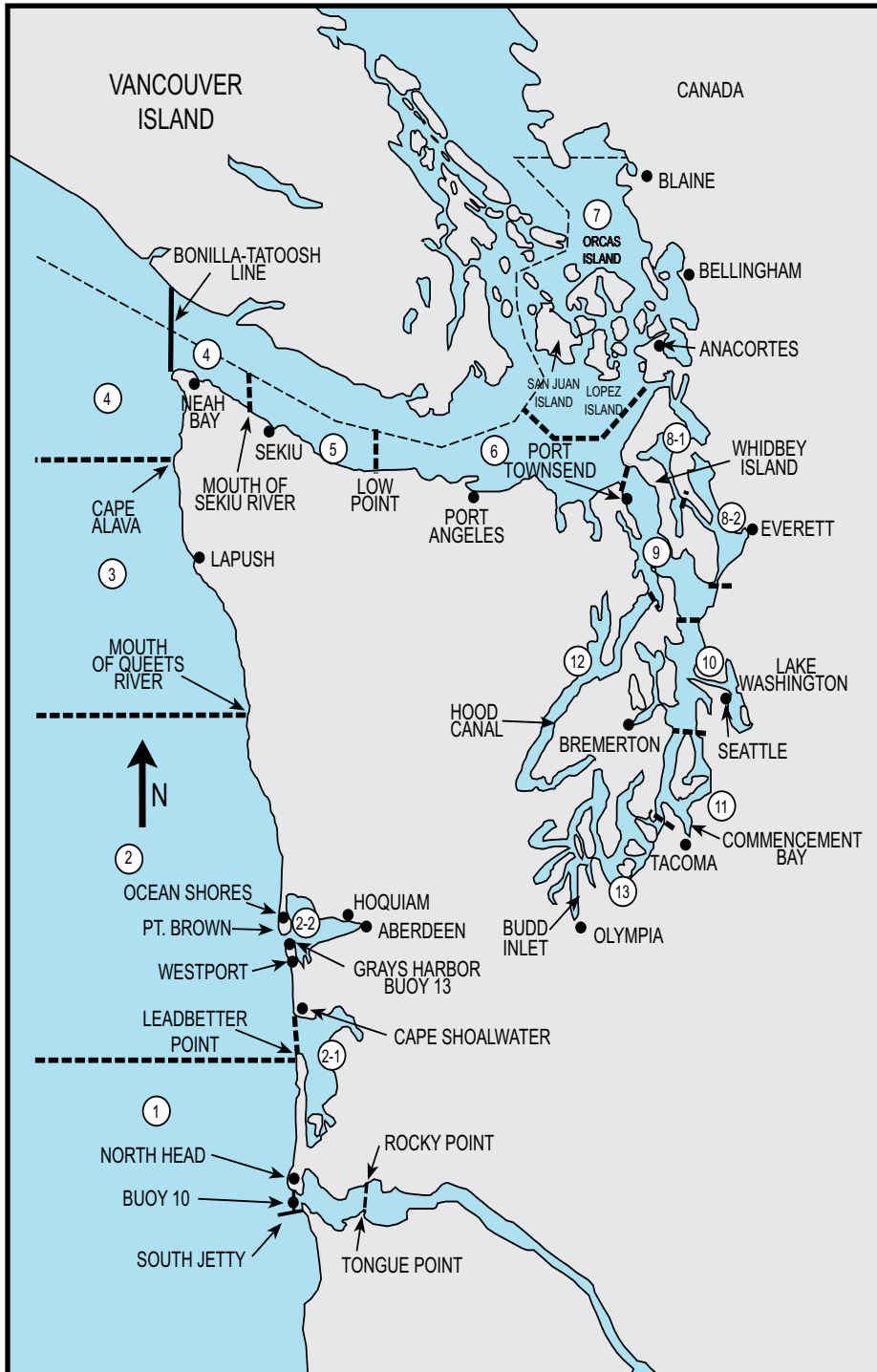
**ROD HOLDERS** - May be used; the rod must be easily removed without delay; rod may be left in the holder while playing the fish.

**ELECTRIC REELS** - May be used if designed for sport fishing and attached to a fishing rod.

**SPEARFISHING** - The diver must be swimming or floating in the water while spearfishing. The use of explosives or bullets attached to the spear ("bang sticks") is prohibited.

In Washington waters where a saltwater license is valid, each angler aboard a vessel may continue to deploy angling gear or shellfish gear until the daily limit of fish and shellfish for all anglers aboard has been achieved.

# Marine Area Definitions and Codes



## AREA DEFINITIONS AND CODES

1. **ILWACO** - west of the Buoy 10 line at the Columbia River mouth, north to Leadbetter Point.
2. **WESTPORT-OCEAN SHORES**- from Leadbetter Point north to the Queets River, excluding Willapa Bay and Grays Harbor.
  - 2-1. **WILLAPA BAY** - east of a line from Leadbetter Point to Cape Shoalwater.
  - 2-2. **GRAYS HARBOR** - east of a line from the outermost tip of the north jetty to outermost exposed end of the south jetty.
3. **LAPUSH** - from the Queets River (47°32.31'N) north to Cape Alava (48° 10' N).
4. **NEAH BAY** - from Cape Alava north and inside Juan de Fuca Strait to the Sekiu River.
5. **SEKIU AND PILLAR POINT** - from mouth of the Sekiu River east to Low Point, mouth of the Lyre River.
6. **EAST JUAN DE FUCA STRAIT** - from Low Point east to the Partridge Point - Point Wilson line, north to the line from Trial Island (near Victoria B.C.) - Vessel Traffic Separation Buoy "R" - Smith Island to the Lawson Reef Buoy, to Northwest Island, to the Initiative 77 marker on Fidalgo Island.
7. **SAN JUAN ISLANDS** - all marine waters north of the Trial Island line (described under Area 6) to the United States-Canada boundary.
  - 8-1. **DECEPTION PASS, HOPE ISLAND, AND SKAGIT BAY** - from West Point to Reservation Head eastward through Deception Pass, including all waters of Swinomish Slough and Skagit Bay, and the portion of Saratoga Passage north and west of a line from East Point Light to light on Camano Island (Saratoga Pass Light #4FI Red 4 Sec.).
  - 8-2. **PORTS SUSAN AND GARDNER** - east of East Point Light-Camano Island Light line (described in 8-1 above) and north of the Possession Point-Shipwreck line (described in 9 below).
9. **ADMIRALTY INLET** - all waters inside and south of the Partridge Point - Point Wilson line, south and west of a line from Possession Point 110° true to shipwreck, north of the Hood Canal Bridge, and north of the Apple Cove Point-Edwards Point line.
10. **SEATTLE-BREMERTON AREA** - south from the Apple Cove Point-Edwards Point line to a line projected true east- west through the north tip of Vashon Island.
11. **TACOMA-VASHON ISLAND** - south from a line projected true east west through the north tip of Vashon Island to the northernmost Tacoma Narrows Bridge.
12. **HOOD CANAL** - all waters south of the Hood Canal Bridge.
13. **SOUTH PUGET SOUND** - all waters south of northernmost Tacoma Narrows Bridge.

**Columbia River Smelt (eulachon)**



**Size:** up to 13"  
**Color:** bluish on upper half with silvery white sides and belly.  
**Look for:** grooves on gill cover, skinny head, speckled tail.

**Surf Smelt**



**Size:** up to 8"  
**Color:** silver with a stripe along the side.  
**Look for:** small adipose fin and stripe on the side.

# Marine Area 1 - Ilwaco

(West of the Buoy 10 line at the Columbia River mouth, north to Leadbetter Point)

SPECIES	SEASON	ADDITIONAL RULES
SALMON - ENTIRE AREA	May 31-June 13	CHINOOK - min. size 24". Other SALMON species - no min. size. Daily limit 2 (combined). Release COHO and wild CHINOOK. <b>Season may close earlier if coastwide guideline of 9,000 CHINOOK is attained. See Control Zone 1 closure below.</b>
	June 14-Sept. 30	CHINOOK - min. size 24". COHO - min. size 16". Other SALMON species - no min. size. Daily limit 2 (combined). Only 1 CHINOOK may be retained. Release wild COHO. <b>Season may close earlier if quota of 92,400 hatchery COHO or 13,100 CHINOOK guideline is attained. See Control Zone 1 closure below. See <a href="http://wdfw.wa.gov">wdfw.wa.gov</a>.</b>
TROUT	Year-round	Catch-and-release except up to 2 hatchery STEELHEAD may be retained.
STURGEON	Year-round	Catch-and-release.
TUNA and MACKEREL	Year-round	No min. size. No daily limit except NORTHERN BLUEFIN, SKIPJACK, and YELLOWFIN TUNA daily limit of 2 each.
HERRING, SAND LANCE, and SMELT	Year-round	No min. size. Daily limit 10 lbs., all species combined. All SMELT caught must be kept and count toward the daily limit except <b>CLOSED</b> to Columbia River SMELT (eulachon).
ANCHOVY and SARDINE	Year-round	No min. size. Daily limit 25 lbs., all species combined. May be taken by a cast net.
PACIFIC HALIBUT*	2014, May 1 until quota	<b>Open (all depths) Thursdays-Sundays ONLY.</b> No min. size. Daily limit 1. Retention of BOTTOMFISH, except SABLEFISH and PACIFIC COD, is prohibited with a HALIBUT onboard. Season may close earlier if quota is attained. See the new <b>Nearshore HALIBUT Fishery below.</b>

\*Check the WDFW website at [wdfw.wa.gov](http://wdfw.wa.gov) or call (360) 902-2700 in March 2015 for updates on the 2015 opening for PACIFIC HALIBUT.

BOTTOMFISH

<b>BOTTOMFISH</b>	Year-round season. Daily limit is 12 BOTTOMFISH (see definition page 10) regardless of species, subject to individual limits and seasons shown below. <b>No BOTTOMFISH (except SABLEFISH and PACIFIC COD) may be landed in Marine Area 1 if a HALIBUT is onboard from May 1 - Sept. 30 except during the Nearshore HALIBUT Fishery (see below).</b>	
LINGCOD	Mar. 15-Oct. 18, 2014 Re-opens Mar. 14, 2015	Min. size 22". Daily limit 2. <b>No retention or possession</b> seaward of a line drawn from 46°38.17' N Lat., 124°21.00' W Lon., to 46°25.00' N Lat., 124°21.00' W Lon.
SURFPERCH	Year-round	No min. size. Daily limit 12. Except SHINER PERCH daily limit 15: not included in BOTTOMFISH limit.
ROCKFISH	Year-round	No min. size. Daily limit 10. No CANARY or YELLOWEYE may be retained.
CABEZON	Year-round	No min. size. Daily limit 2.
SIXGILL, SEVENGILL, and THRESHER SHARKS	CLOSED	CLOSED to fishing for, retaining, or possessing. SIXGILL SHARK may not be removed from the water.
<b>OTHER FOOD FISH</b>	Year-round	No min. size. Daily limit 2 of each species.
<b>ALL OTHER FISH</b>	CLOSED	CLOSED to fishing for, retaining, or possessing.

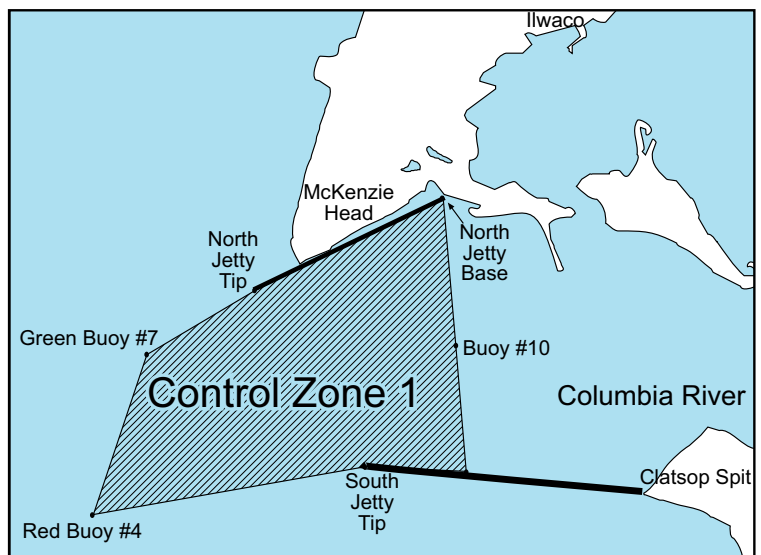
**Control Zone 1:** An area at the Columbia River mouth bounded on the west by a line running northeast/southwest between the red lighted Buoy #4 (46°13.58'N/124°06.83'W) and the green lighted Buoy #7 (46°15.15'N/124°06.27'W); on the east by the Buoy #10 line which bears north/south at 357° true from the south jetty at 46°14'N/124°03.12'W to its intersection with the north jetty; on the north by a line running northeast/southwest between the green lighted Buoy #7 to the tip of the north jetty (46°14.8'N/124°05.33'W), and then along the north jetty to the point of intersection with the Buoy #10 line; and on the south by a line running northeast/southwest between the red lighted Buoy #4 and the tip of the south jetty (46°14.05'N/124°04.08'W), and then along the south jetty to the point of intersection with the Buoy #10 line, is **CLOSED** to fishing for SALMON at all times except open to fishing from the north jetty when adjacent waters north of the Control Zone are open to fishing for SALMON or the Buoy 10 fishery is open.

**Buoy 10 season:** See Columbia River listing in Eastside Rivers-Special Rules section.

**Buoy 10 Line:** Defined as a true north and south line projected through Buoy 10, which marks the channel leading into the Columbia River at its mouth (a line from the Lewis and Clark Interpretive Center atop Cape Disappointment Rock through Buoy 10 to the south jetty).

**Columbia River North Jetty:** The jetty is open to fishing for SALMON 7 days a week when the Buoy 10 or the Marine Area 1 SALMON fishery is open. Daily limit and minimum size restrictions follow the most liberal regulations of either area.

**Reciprocity Rules:** When angling from a boat in the concurrent waters of the Columbia River or the Pacific Ocean within 3 miles of shore between Cape Falcon, Oregon, and Leadbetter Point, Washington, either a Washington or an Oregon fishing license is valid.



**Nearshore HALIBUT Fishery:** Open to HALIBUT fishing beginning 2014, May 5 until quota, **Mondays-Wednesdays ONLY** for those waters seaward of 46°38.17' N latitude 124°15.88' W Lon., to the WA/OR border at 46°16.00' N Lat., 124°15.88' W Lon., then connecting to the 40 fathom depth contour in Oregon. **BOTTOMFISH** may be retained with HALIBUT on board in this Nearshore HALIBUT Fishery **ONLY**.

# Marine Area 2 - Westport - Ocean Shores

## Marine Area 2-1 (Willapa Bay) and Marine Area 2-2 (Grays Harbor)

**Marine Area 2 Definition: from Leadbetter Point north to the Queets River, excluding Willapa Bay and Grays Harbor**

**Marine Area 2-1 (Willapa Bay) Definition: east of a line from Cape Shoalwater to Leadbetter Point**

**Marine Area 2-2 (Grays Harbor) Definition: east of a line from the tip of the north jetty to exposed end of the south jetty**

SPECIES	SEASON	ADDITIONAL RULES
SALMON - AREA 2	May 31-June 13	CHINOOK - min. size 24". Other SALMON species - no min. size. Daily limit 2 (combined). Release COHO and wild CHINOOK. <b>Season may close earlier if coastwide guideline of 9,000 CHINOOK is attained.</b>
	June 14-Sept. 30	CHINOOK - min. size 24". COHO - min. size 16". Other SALMON species - no min. size. Daily limit 2 (combined). Only 1 CHINOOK may be retained. Release wild COHO. <b>Season may close earlier if quota of 68,380 hatchery COHO or 27,600 CHINOOK guideline is attained. Grays Harbor Control Zone CLOSED beginning Aug. 11, see description on next page. See <a href="http://wdfw.wa.gov">wdfw.wa.gov</a>.</b>
AREA 2-1 east of a line from Cape Shoalwater to Leadbetter Pt. (see map next page)	May 31-July 31	Open concurrent with the ocean (Area 2) for SALMON. Area 2 rules apply.
	Aug. 1-Jan. 31	Min. size 12". Daily limit 6 (combined). Up to 3 adults may be retained. Release wild CHINOOK and CHUM. <b>Anglers may fish with two poles with Two-Pole Endorsement. Aug. 1-Sept. 15: see ④ South Willapa Bay Area Closure on next page. Aug. 1-Sept. 30: see ③ North River Area Closure on next page.</b>
AREA 2-2 (west of Buoy 13 line)	May 31-Aug. 10	Open concurrent with the ocean (Area 2) for SALMON. Area 2 rules apply.
AREA 2-2 (east of the Buoy 13 line)	ALL SALMON required to be released may not be totally removed from the water, except anglers fishing from boats 30' or longer as listed on either their state or Coast Guard registration are exempt.	
Humptulips North Bay Fishery ① (see map next page)	Aug. 16-Aug. 31	Min. size 12". Daily limit 2 (combined). Only 1 CHINOOK may be retained. Release wild COHO. Season may be extended.
East Grays Harbor Fishery ② (see map next page)	Sept. 16-Nov. 30	Min. size 12". Daily limit 3 (combined). Release CHINOOK.
Westport Boat Basin and Ocean Shores Boat Basin	Aug. 16-Jan. 31	Min. size 12". Daily limit 6. No more than 4 adults may be retained. Release CHINOOK. Night closure and anti-snagging rule. Only single-point barbless hooks may be used.
TROUT	Year-round	Catch-and-release except up to 2 hatchery STEELHEAD may be retained.
STURGEON	Year-round	Catch-and-release.
TUNA and MACKEREL	Year-round	No min. size. No daily limit except NORTHERN BLUEFIN, SKIPJACK, and YELLOWFIN TUNA daily limit of 2 each.
HERRING, SAND LANCE, and SMELT	Year-round	No min. size. Daily limit 10 lbs., all species combined. All SMELT caught must be kept and count toward the daily limit except <b>CLOSED</b> to Columbia River SMELT (eulachon).
ANCHOVY and SARDINE	Year-round	No min. size. Daily limit 25 lbs., all species combined. May be taken by a cast net.
PACIFIC HALIBUT*	2014, May 4 until quota or Sept. 30, 2014 whichever comes first	Open Sunday May 4, <b>Sundays and Tuesdays ONLY, except CLOSED May 25, 27.</b> If sufficient quota remains, the fishery will re-open June 1 and or June 3. No min. size. Daily limit 1. <b>See Northern Nearshore HALIBUT Fishery and HALIBUT and BOTTOMFISH closure areas on next page.</b>
*Check the WDFW website at <a href="http://wdfw.wa.gov">wdfw.wa.gov</a> or call (360) 902-2700 in March 2015 for updates on the 2015 opening for PACIFIC HALIBUT.		
<b>BOTTOMFISH</b>	Year-round season. Daily limit is a total of 12 BOTTOMFISH (see definition page 10) regardless of species, subject to individual limits and seasons shown below. See HALIBUT and BOTTOMFISH closure areas and 30 fathom restriction on next page.	
LINGCOD	Mar. 15-Oct. 18, 2014 Re-opens Mar. 14, 2015	Min. size 22". Daily limit 2. <b>No retention or possession</b> seaward of a line approximating 30 fathoms March 15-June 15 (except when the primary HALIBUT season is open). See 30 fathom restriction on next page. <b>No retention or possession</b> south of 46°58' N. and seaward of 30 fathoms on Fridays and Saturdays July 1-Aug. 31. <b>No retention or possession</b> seaward of a line drawn from, 47°31.70' N, 124°45.00' W to 46°38.17' N, 124°30.00' W (except when the primary HALIBUT season is open) year-round.
SURFPERCH	Year-round	No min. size. Daily limit 12. Except SHINER PERCH daily limit 15: not included in BOTTOMFISH limit.
ROCKFISH	Year-round	No min. size. Daily limit 10. No CANARY or YELLOWEYE may be retained.
CABEZON	Year-round	No min. size. Daily limit 2.
SIXGILL, SEVENGILL, and THRESHER SHARKS	CLOSED	CLOSED to fishing for, retaining, or possessing. SIXGILL SHARK may not be removed from the water.
<b>OTHER FOOD FISH</b>	Year-round	No min. size. Daily limit 2 of each species.
<b>ALL OTHER FISH</b>	CLOSED	CLOSED to fishing for, retaining, or possessing.

**NOTE:** In Areas 2-1 and 2-2, anglers may use either a freshwater, saltwater, or combination license.



# Marine Area 2 - Westport - Ocean Shores

## HALIBUT and BOTTOMFISH Closure Areas

Fishing for HALIBUT and BOTTOMFISH is closed and anglers may not fish for SALMON with BOTTOMFISH aboard in these areas:

**South Coast YRCA** described beginning at: 46°58.00'N, 124°48.00'W, and continuing to 46°55.00'N, 124°48.00'W, then to 46°55.00'N, 124°49.00'W, then to 46°58.00'N, 124°49.00'W, and back to the point of origin.

**Westport Offshore YRCA** beginning at: 46°54.30'N, 124°53.40'W, and continuing to 46°54.30'N, 124°51.00'W, then to 46°53.30'N, 124°51.00'W, then to 46°53.30'N, 124°53.40'W, and back to the point of origin.

## 30 fathom restriction

Mar. 15-June 15: fishing for or possession of BOTTOMFISH, except ROCKFISH, is prohibited seaward of a line approximating 30 fathoms, except LINGCOD retention permitted on days primary HALIBUT season is open. SABLEFISH, and PACIFIC COD permitted May 1-June 15 from Queets River south to Leadbetter Pt., as described by the following coordinates:  
 47°31.70'N, 124°37.03'W,  
 47°25.67'N, 124°34.79'W,  
 47°12.82'N, 124°29.12'W,  
 46°52.94'N, 124°22.58'W,  
 46°44.18'N, 124°18.00'W,  
 46°38.17'N, 124°15.88'W.

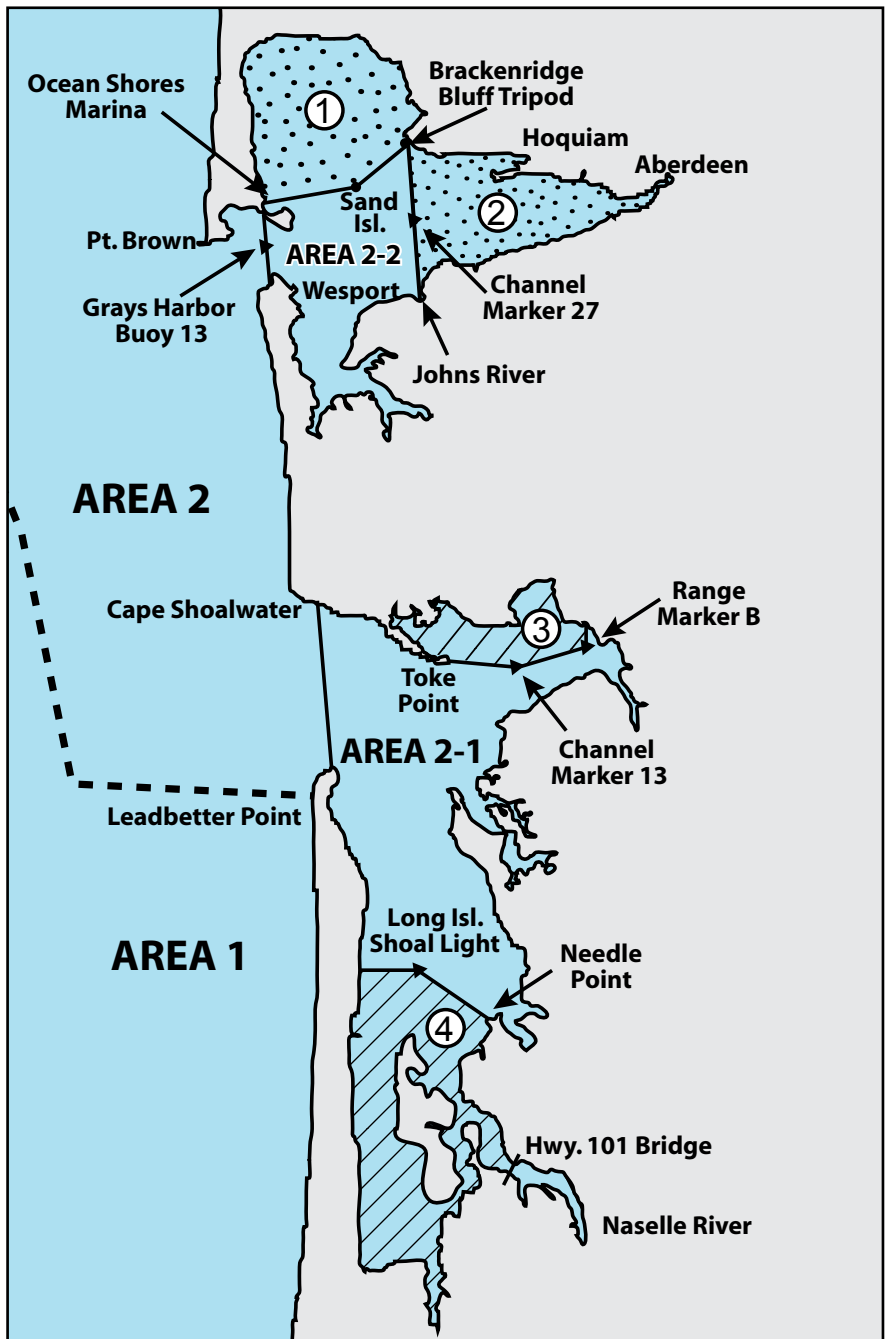
**Buoy 13 Line:** A line drawn true north-south through Buoy 13 near the entrance of Grays Harbor.

**Grays Harbor Control Zone:** An area at the entrance to Grays Harbor bounded by a line from the lighthouse 1 mile south of the south jetty to buoy #2 to buoy #3 to the tip of the north jetty to the tip of the exposed end of the south jetty.

**Westport Boat Basin:** A portion of Grays Harbor lying inside the boat basin breakwater and inside lines drawn from lighted day markers 10 to 11 and 1 to 2.

**Northern Nearshore HALIBUT Fishery:** Open to HALIBUT fishing beginning May 4, 2014 seven days per week until the sub-quota is reached or Sept. 30, 2014 for those waters from 47°31.70' N. latitude south to 46°58.00'N. latitude and east of a line approximating 30 fathoms as defined by the following coordinates:  
 47°31.70'N, 124°37.03'W,  
 47°25.67'N, 124°34.79'W,  
 47°12.82'N, 124°29.12'W,  
 46°58.00'N, 124°24.24'W.

**NOTE:** In Areas 2-1 and 2-2, anglers may use either a freshwater, saltwater, or combination license.



- ① **Humptulips North Bay Fishery**  
 Northerly of a line running from the south end of the eastern jetty at Ocean Shores Marina, then to a fishing boundary marker on Sand Island (46°57.52'N, 124°03.36'W) then to the Tripod Station located at 46°59.12'N, 124°00.72'W on Brackenridge Bluff.
- ② **East Grays Harbor Fishery**  
 Easterly of a projected line from the mouth of Johns River (Hwy. 105 Bridge) to the Tripod Station on Brackenridge Bluff (46°59.12'N, 124°00.72'W) through channel marker 27 (green).
- ③ **North River Closure**  
 Aug. 1-Sept. 30: closed to salmon angling in waters north of a line from Toke Point channel marker 3 easterly through Willapa Harbor channel marker 13 (green) to range marker "B", then due north to landfall (near Johnson Slough).
- ④ **South Willapa Bay Closure**  
 Aug. 1-Sept. 15: closed to salmon angling in waters south of a line from Needle Point northwesterly to Long Island Shoal light (green) (46°32.32'N, 123°58.59'W) then due west to landfall on the North Beach peninsula at 46°32.32'N.

# Marine Area 3 - LaPush

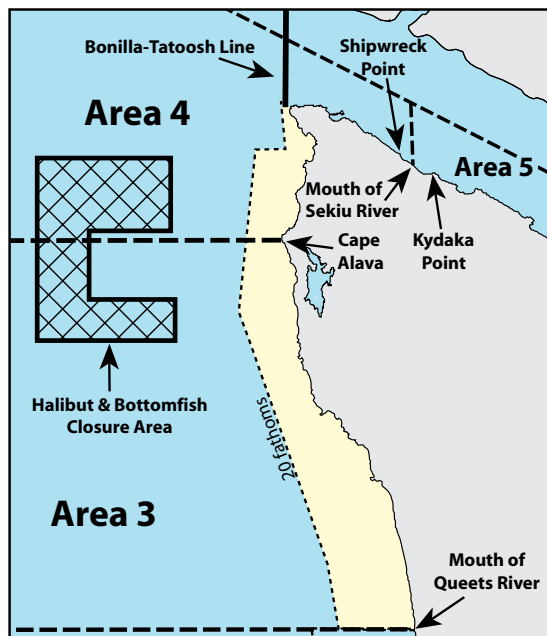
(From the Queets River north to Cape Alava)

SPECIES	SEASON	ADDITIONAL RULES
SALMON - ENTIRE AREA	May 16-May 17 May 23-May 24 May 31-June 13	CHINOOK - min. size 24". Other SALMON species - no min. size. Daily limit 2 (combined). Release COHO and wild CHINOOK. <b>Season may close earlier if coastwide guideline of 9,000 CHINOOK is attained.</b>
	June 14-Sept. 21	CHINOOK - min. size 24". COHO - min. size 16". Other SALMON species - no min. size. Daily limit 2 (combined). Release wild COHO. <b>Season may close earlier if sub-quota of 4,750 hatchery COHO or 2,350 CHINOOK guideline is attained.</b> Note: season may change depending on inseason catch projections. See <a href="http://wdfw.wa.gov">wdfw.wa.gov</a> .
LaPush Late Season Area (see below for boundaries)	Sept. 27-Oct. 12	CHINOOK - min. size 24". COHO - min. size 16". Other SALMON species - no min. size. Daily limit 2 (combined). Release wild COHO. <b>Season may close earlier if sub-quota of 50 hatchery COHO or 50 CHINOOK quota is attained.</b>
TROUT	Year-round	Catch-and-release except up to 2 hatchery STEELHEAD may be retained.
STURGEON	Year-round	Catch-and-release.
TUNA and MACKEREL	Year-round	No min. size. No daily limit except NORTHERN BLUEFIN, SKIPJACK, and YELLOWFIN TUNA daily limit of 2 each.
HERRING, SAND LANCE, and SMELT	Year-round	No min. size. Daily limit 10 lbs., all species combined. All SMELT caught must be kept and count toward the daily limit except CLOSED to Columbia River SMELT (eulachon).
ANCHOVY and SARDINE	Year-round	No min. size. Daily limit 25 lbs., all species combined. May be taken by a cast net.
PACIFIC HALIBUT*	2014, May 15 until quota	Open Thursday May 15, <b>Thursdays and Saturdays ONLY through May 24 (or quota)</b> . HALIBUT fishery <b>CLOSED</b> May 29-31. If sufficient quota remains, the fishery will re-open June 5 and or June 7. Additional openings may occur with sufficient quota see <a href="http://wdfw.wa.gov">wdfw.wa.gov</a> . No min. size. Daily limit 1. <b>See HALIBUT and BOTTOMFISH closure area below.</b>

\*Check the WDFW website at [wdfw.wa.gov](http://wdfw.wa.gov) or call (360) 902-2700 in March 2015 for updates on the 2015 opening for PACIFIC HALIBUT.

BOTTOMFISH

<b>BOTTOMFISH</b>	Year-round season. Daily limit is a total of 12 BOTTOMFISH (see definition page 10) regardless of species, subject to individual limits and seasons shown below. No retention or possession of BOTTOMFISH seaward of line approximating 20 fathoms May 1-Sept. 30 (except LINGCOD, SABLEFISH, and PACIFIC COD when HALIBUT is open). <b>See 20 fathom restriction below. Note HALIBUT and BOTTOMFISH Closure Area below.</b>	
LINGCOD	Mar. 15-Oct. 18, 2014 Re-opens Mar. 14, 2015	Min. size 22". Daily limit 2.
SURFPERCH	Year-round	No min. size. Daily limit 12. Except SHINER PERCH daily limit 15: not included in BOTTOMFISH limit.
ROCKFISH	Year-round	No min. size. Daily limit 10. No CANARY or YELLOWEYE may be retained.
CABEZON	Year-round	No min. size. Daily limit 2.
SIXGILL, SEVENGILL, and THRESHER SHARKS	CLOSED	CLOSED to fishing for, retaining, or possessing. SIXGILL SHARK may not be removed from the water.
<b>OTHER FOOD FISH</b>	Year-round	No min. size. Daily limit 2 of each species.
<b>ALL OTHER FISH</b>	CLOSED	CLOSED to fishing for, retaining, or possessing.



### HALIBUT and BOTTOMFISH Closure Area ("C"-shaped YRCA)

Fishing for HALIBUT and BOTTOMFISH is closed, and anglers may not fish for SALMON with BOTTOMFISH aboard in the area described as an eastward facing "C" beginning at:

48°18'N, 125°18'W and continuing to  
 48°18'N, 124°59'W, then to  
 48°11'N, 124°59'W, then to  
 48°11'N, 125°11'W, then to  
 48°04'N, 125°11'W, then to  
 48°04'N, 124°59'W, then to  
 48°00'N, 124°59'W, then to  
 48°00'N, 125°18'W, and  
 back to the point of origin.

**LaPush Late Season Area - SALMON** fishery restricted to the area north of 47°50'N. latitude and south of 48°00'N. latitude. Same season and rules as Marine Area 3 - ENTIRE AREA except Sept. 27-Oct. 12. See above for rules.

### 20 fathom restriction (BOTTOMFISH)

May 1-Sept. 30: fishing for or possession of BOTTOMFISH is prohibited seaward of a line approximating 20 fathoms from the Bonilla-Tatoosh line south to the Queets River, (Marine Area 3 and 4) as described by the following coordinates:  
 48°23.90' N, 124°44.20' W,  
 48°23.60' N, 124°44.90' W,  
 48°18.60' N, 124°43.60' W,  
 48°18.60' N, 124°48.20' W,  
 48°10.00' N, 124°48.80' W,  
 48°02.40' N, 124°49.30' W,  
 47°37.60' N, 124°34.30' W,  
 47°31.70' N, 124°32.40' W.

**Exception:** retention of LINGCOD, PACIFIC COD, and SABLEFISH allowed on days when HALIBUT is open.

Marine Areas

# Marine Area 4 - Neah Bay

(From Cape Alava north and inside Juan de Fuca Strait to the Sekiu River)

SPECIES	SEASON	ADDITIONAL RULES
SALMON West of the Bonilla-Tatoosh Line	May 16-May 17 May 23-May 24 May 31-June 13	CHINOOK - min. size 24". Other SALMON species - no min. size. Daily limit 2 (combined). Release COHO and wild CHINOOK. <b>Season may close earlier if coastwide guideline of 9,000 CHINOOK is attained.</b>
	June 14-Sept. 21	CHINOOK - min. size 24". COHO - min. size. 16". Other SALMON species - no min. size. Daily limit 2 (combined). Release wild COHO. Beginning Aug. 1 release CHUM. <b>Season may close earlier if sub-quota of 19,220 hatchery COHO or 7,000 CHINOOK guideline is attained.</b> Note: season may change depending on inseason catch projections. See <a href="http://wdfw.wa.gov">wdfw.wa.gov</a> .
	East of the Bonilla-Tatoosh Line	CHINOOK - min. size 24". Other SALMON species - no min. size. Daily limit 2 (combined). Release COHO and wild CHINOOK. <b>Season may close earlier if coastwide guideline of 9,000 CHINOOK is attained. East of a true north-south line through Sail Rock CLOSED to SALMON fishing. See Kydaka Point Closure below.</b>
East of the Bonilla-Tatoosh Line	May 16-May 17 May 23-May 24 May 31-June 13	CHINOOK - min. size 24". Other SALMON species - no min. size. Daily limit 2 (combined). Release COHO and wild CHINOOK. <b>Season may close earlier if coastwide guideline of 9,000 CHINOOK is attained. East of a true north-south line through Sail Rock CLOSED to SALMON fishing. See Kydaka Point Closure below.</b>
	June 14-July 31	CHINOOK - min. size 24". COHO - min. size. 16". Other SALMON species - no min. size. Daily limit 2 (combined). Release wild COHO. <b>East of a true north-south line through Sail Rock CLOSED to SALMON fishing. See Kydaka Point Closure below.</b> Note: season may change depending on inseason catch projections. See <a href="http://wdfw.wa.gov">wdfw.wa.gov</a> .
	Aug. 1-Sept. 21	COHO - min. size. 16". Other SALMON species - no min. size. Daily limit 2 (combined). Release CHINOOK, wild COHO and CHUM. <b>See Kydaka Point Closure below.</b> Note: season may change depending on inseason catch projections. See <a href="http://wdfw.wa.gov">wdfw.wa.gov</a> .
<b>July-Sept. seasons may close earlier if quota of 19,220 hatchery COHO or 7,000 CHINOOK guideline is attained.</b>		
TROUT	Year-round	Catch-and-release except up to 2 hatchery STEELHEAD may be retained.
STURGEON	Year-round	Catch-and-release.
TUNA and MACKEREL	Year-round	No min. size. No daily limit except NORTHERN BLUEFIN, SKIPJACK, and YELLOWFIN TUNA daily limit of 2 each.
HERRING, SAND LANCE, and SMELT*	Year-round	No min. size. Daily limit 10 lbs., all species combined. All SMELT caught must be kept and count toward the daily limit except <b>CLOSED</b> to Columbia River SMELT (eulachon). <b>For SMELT:</b> East of the Bonilla-Tatoosh line - jig gear may be used 7 days a week. Dipnets may be used 8:00 a.m. Fridays through 8:00 a.m. Wednesdays. West of the Bonilla-Tatoosh line - dipnets and jigs may be used 7 days a week.
*Check the WDFW website at <a href="http://wdfw.wa.gov">wdfw.wa.gov</a> or call (360) 902-2700 for updates on SMELT. The Fish and Wildlife Commission is considering changes in June 2014.		
ANCHOVY and SARDINE	Year-round	No min. size. Daily limit 25 lbs., all species combined. May be taken by a cast net.
PACIFIC HALIBUT**	2014, May 15 until quota	Open Thursday May 15, <b>Thursdays and Saturdays ONLY through May 24 (or quota)</b> . HALIBUT fishery <b>CLOSED</b> May 29-31. If sufficient quota remains, the fishery will re-open June 5 and or June 7. Additional openings may occur with sufficient quota see <a href="http://wdfw.wa.gov">wdfw.wa.gov</a> . No min. size. Daily limit 1. See HALIBUT and BOTTOMFISH closure on previous page.
**Check the WDFW website at <a href="http://wdfw.wa.gov">wdfw.wa.gov</a> or call (360) 902-2700 in March 2015 for updates on the 2015 opening for PACIFIC HALIBUT.		
<b>BOTTOMFISH</b>		
West of Bonilla-Tatoosh Line	Year-round	Daily limit is a total of 12 BOTTOMFISH (see definition page 10), regardless of species, subject to individual limits and seasons shown below. <b>See HALIBUT and BOTTOMFISH Closure Area and 20 fathom restriction on previous page.</b>
East of Bonilla-Tatoosh Line	Year-round	Daily limit is a total of 10 BOTTOMFISH (see definition page 10), regardless of species, subject to individual limits and seasons shown below. Fishing for BOTTOMFISH prohibited in waters deeper than 120'. <b>See BOTTOMFISH Closure next page.</b>
LINGCOD	Apr. 16-Oct. 15, 2014 Re-opens Apr. 16, 2015	Min. size 22". Daily limit 2. West of the Bonilla-Tatoosh Line: no retention or possession of LINGCOD seaward of line approximating 20 fathoms May 1-Sept. 30 (except when HALIBUT is open). <b>See 20 fathom restriction on previous page.</b> East of Bonilla-Tatoosh line: <b>See BOTTOMFISH closure next page.</b>
SURFPERCH	Year-round	No min. size. Daily limit 12. Except SHINER PERCH daily limit 15: not included in BOTTOMFISH limit.
ROCKFISH West of Bonilla-Tatoosh Line	Year-round	No min. size. Daily limit 10. No CANARY or YELLOWEYE may be retained. No retention or possession of rockfish seaward of a line approximating 20 fathoms May 1-Sept. 30. <b>See 20 fathom restriction on previous page.</b>
	East of Bonilla-Tatoosh Line	Year-round
CABEZON	Year-round	Min. size 18". Daily limit 1.
WOLF-EEL	Year-round	CLOSED to retention.
SIXGILL, SEVENGILL, and THRESHER SHARKS	CLOSED	CLOSED to fishing for, retaining, or possessing. SIXGILL SHARK may not be removed from the water.
OTHER FOOD FISH	Year-round	No min. size. Daily limit 2 of each species.
ALL OTHER FISH	CLOSED	CLOSED to fishing for, retaining, or possessing.

**Bonilla-Tatoosh Line:**

A line running from the western end of Cape Flattery 48°22.86'N, 124°43.91'W, to Tatoosh Island Lighthouse 48°23.49'N, 124°44.21'W, then in a straight line to Bonilla Point on Vancouver Island 48°35.73'N, 124°43'W. See map on previous page.

**Kydaka Point Closure:**

May 31-Sept. 21: waters south of a line from Kydaka Point westerly approximately 4 miles to Shipwreck Point CLOSED to fishing for SALMON. See map on page 108.

# Marine Area 5 - Sekiu and Pillar Point

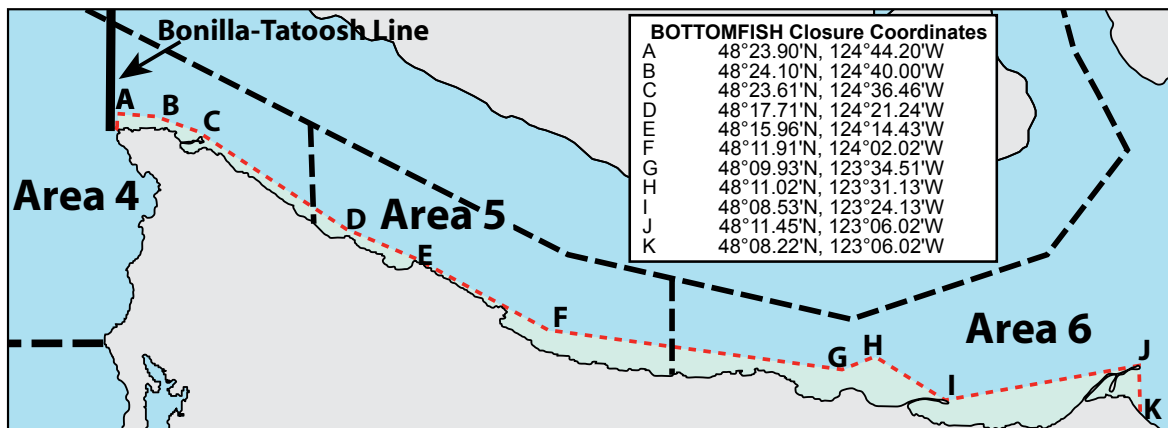
(From mouth of the Sekiu River east to Low Point, mouth of the Lyre River) See map on following page.

SPECIES	SEASON	ADDITIONAL RULES	
SALMON - ENTIRE AREA	July 1-Aug. 15	CHINOOK - min. size 22". Other SALMON species - no min. size. Daily limit 2 (combined) plus 2 additional SOCKEYE. Release wild CHINOOK, wild COHO, and CHUM. <b>See Kydaka Point Closure next page. Season may close earlier if CHINOOK guideline is attained.</b>	
	Aug. 16-Sept. 18	No min. size. Daily limit 2 (combined). Release CHINOOK, wild COHO, and CHUM. Aug. 16-Aug. 31: daily limit may include 2 additional SOCKEYE. <b>See Kydaka Point Closure next page.</b>	
	Sept. 19-Sept. 30	No min. size. Daily limit 2 (combined). Release CHINOOK and CHUM. Sept. 26-Sept. 30: release wild COHO. <b>See Kydaka Point Closure next page.</b>	
	Oct. 1-Oct. 31	CHINOOK - min. size 22". Other SALMON species - no min. size. Daily limit 2 (combined). Release wild CHINOOK and wild COHO. <b>See Kydaka Point Closure next page.</b>	
	Feb. 16-Apr. 10	CHINOOK - min. size 22". Other SALMON species - no min. size. Daily limit 2 (combined). Release wild CHINOOK.	
TROUT	Year-round	Catch-and-release except up to 2 hatchery STEELHEAD may be retained.	
STURGEON	Year-round	Catch-and-release.	
TUNA and MACKEREL	Year-round	No min. size. No daily limit except NORTHERN BLUEFIN, SKIPJACK, and YELLOWFIN TUNA daily limit of 2 each.	
HERRING, ANCHOVY, SARDINE, SAND LANCE, and SMELT*	Year-round	No min. size. Daily limit 10 lbs., all species combined. All SMELT caught must be kept and count toward the daily limit except <b>CLOSED</b> to Columbia River SMELT (eulachon). <b>For SMELT:</b> Jig gear may be used 7 days a week. Dipnets may be used 8:00 a.m. Fridays through 8:00 a.m. Wednesdays.	
*Check the WDFW website at <a href="http://wdfw.wa.gov">wdfw.wa.gov</a> or call (360) 902-2700 for updates on SMELT. The Fish and Wildlife Commission is considering changes in June 2014.			
PACIFIC HALIBUT**	May 22-June 7, 2014	May 22-May 25: <b>Thursday through Sunday ONLY.</b> May 29-May 31: <b>Open Thursday through Saturday ONLY.</b> June 7: <b>Saturday ONLY.</b> No min. size. Daily limit 1.	
**Check the WDFW website at <a href="http://wdfw.wa.gov">wdfw.wa.gov</a> or call (360) 902-2700 in March 2015 for updates on the 2015 opening for PACIFIC HALIBUT.			
<b>BOTTOMFISH</b>	Year-round season. Daily limit is a total of 15 BOTTOMFISH (see definition page 10) regardless of species, subject to individual limits and seasons shown below. Fishing for BOTTOMFISH prohibited in waters deeper than 120 feet. <b>See BOTTOMFISH Closure below. Exception:</b> retention of LINGCOD and PACIFIC COD allowed on days when HALIBUT is open.		
	LINGCOD	May 1-June 15 May 21-June 15	<b>Hook and line season.</b> Min. size 26". Max. size 36". Daily limit 1. <b>Spearfishing season.</b> Max. size 36". Daily limit 1.
	SURFPERCH	Year-round	No min. size. Daily limit 10. Except SHINER PERCH daily limit 15: not included in BOTTOMFISH limit.
	ROCKFISH	West of Slip Point May 1-Sept. 30	No min. size. Daily limit is the first 3 BLACK or BLUE rockfish caught. May 1-June 15 spearfishing allowed.
		East of Slip Point May 1-Sept. 30	No min. size. Daily limit is the first BLACK or BLUE rockfish caught. May 1-June 15 spearfishing allowed.
	PACIFIC COD, POLLOCK, HAKE	Year-round	No min. size. Daily limit 2 of each species.
	CABEZON	May 1-Nov. 30	Min. size 18". Daily limit 1.
	WOLF-EEL	Year-round	CLOSED to retention.
	SIXGILL, SEVENGILL, and THRESHER SHARKS	CLOSED	CLOSED to fishing for, retaining, or possessing. SIXGILL SHARK may not be removed from the water.
	<b>OTHER FOOD FISH</b>	Year-round	No min. size. Daily limit 2 of each species.
<b>ALL OTHER FISH</b>	CLOSED	CLOSED to fishing for, retaining, or possessing.	

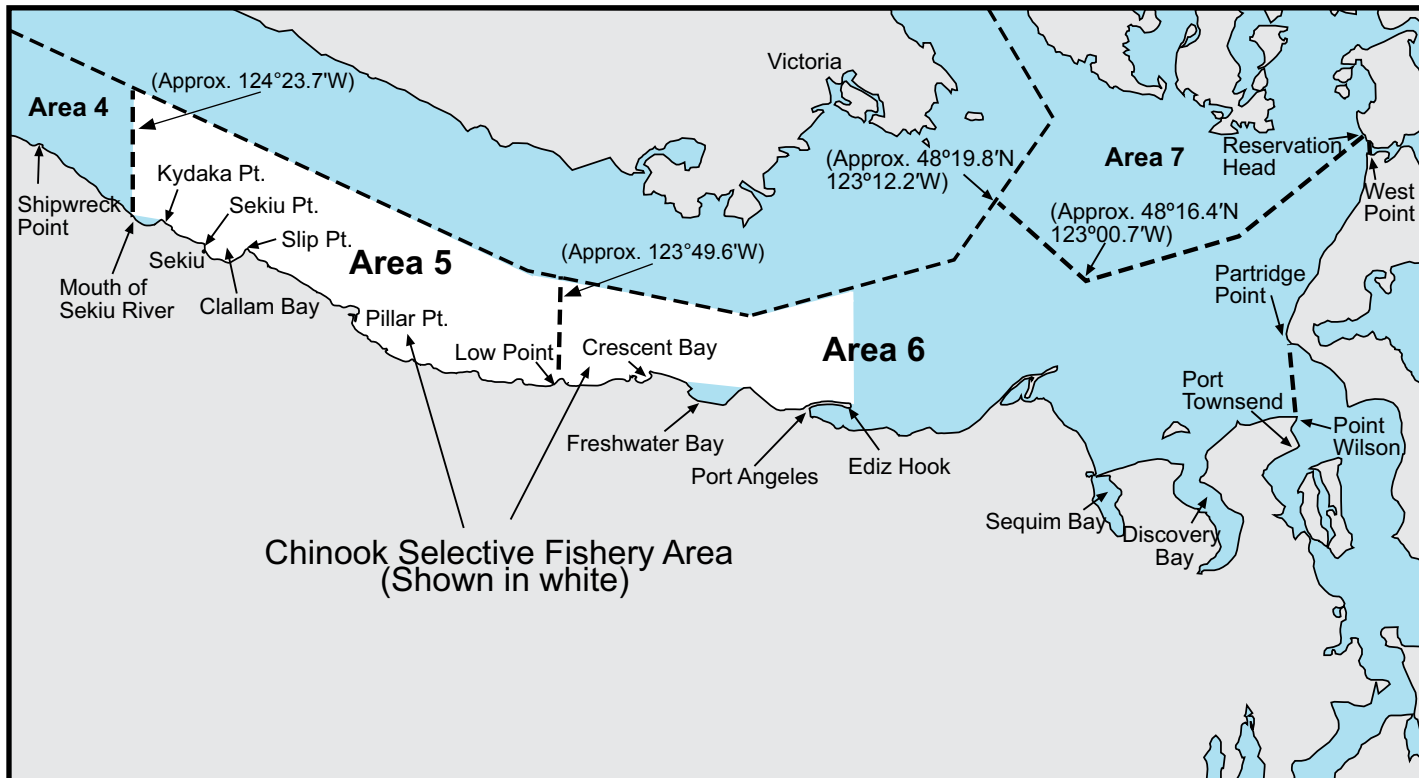
BOTTOMFISH

Marine Areas

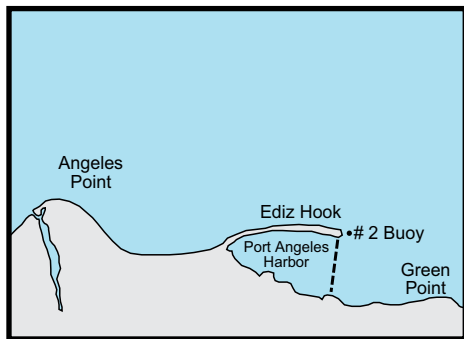
**BOTTOMFISH Closure:** Fishing for BOTTOMFISH prohibited in waters deeper than 120 feet as defined by the coordinates listed below shown by the dashed red line. **Exception:** retention of LINGCOD and PACIFIC COD allowed on days when HALIBUT is open.



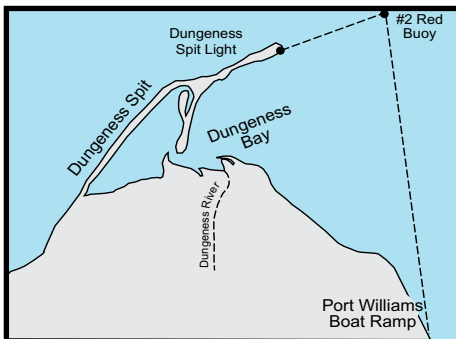
# Marine Area 5 and 6 Map



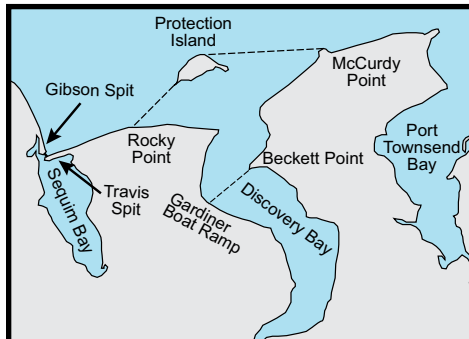
**Kydaka Point Closure:** July 1-Oct. 31: waters south of a line from Kydaka Point westerly approximately 4 miles to Shipwreck Point CLOSED to fishing for SALMON. See map above.



**Port Angeles Harbor Closure:** Waters of Port Angeles Harbor west of a line from the tip of Ediz Hook to the ITT Rayonier Dock.

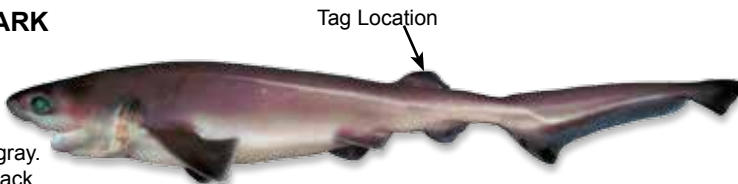


**Dungeness Bay Fishery and Closure:** Waters of Dungeness Bay inside of a line from Dungeness Spit Lighthouse to the #2 Red Buoy, then to the Port Williams boat ramp. Oct. 1-Oct. 31: open to fishing for COHO SALMON. See rules next page. CLOSED to fishing for SALMON at all other times.



**Discovery Bay Shrimp District:** Waters south of a line from McCurdy Point on the Quimper Peninsula to the northern tip of Protection Island then from the western end of Protection Island to Rocky Point on the Miller Peninsula and all waters of Discovery Bay.

## SIXGILL SHARK



**Size:** up to 15'  
**Color:** dark brown or gray.  
**Look for:** one fin on back situated towards tail.  
 Six gill slits on each side of head.

**SIXGILL SHARK - May not be removed from the water.**

The department is tagging SIXGILL sharks to learn more about their behavior and abundance. The tags are colored disks about the size of a quarter.

If you see or catch a tagged SIXGILL shark in Washington waters, do not remove the tag, but please report the color and tag number by calling (360) 902-2700.

# Marine Area 6 - East Juan de Fuca Strait

(From Low Point east to the Partridge Point – Point Wilson line north to the line from Trial Island (near Victoria B.C.) – Vessel Traffic Separation Buoy “R” – Smith Island to the Lawson Reef Buoy to Northwest Island to the Initiative 77 marker on Fidalgo Island and west of the line from Reservation Head to West Point)

SPECIES	SEASON	ADDITIONAL RULES
SALMON <b>(CHINOOK Selective Fishery)</b> West of a true north/south line through the #2 Buoy immediately east of Ediz Hook	July 1-Aug. 15	CHINOOK - min. size 22". Other SALMON species - no min. size. Daily limit 2 (combined) plus 2 additional SOCKEYE. Release wild CHINOOK, wild COHO, and CHUM. <b>See closures below.</b>
<b>(CHINOOK Release Area)</b> East of a true north/south line through the #2 Buoy immediately east of Ediz Hook	July 1-Aug. 15	No min. size. Daily limit 2 (combined) plus 2 additional SOCKEYE. Release CHINOOK, wild COHO, and CHUM. <b>See closures below.</b>
SALMON - ENTIRE AREA	Aug. 16-Sept. 30	No min. size. Daily limit 2 (combined). Release CHINOOK, wild COHO, and CHUM. Aug. 16-Aug. 31: daily limit may include 2 additional SOCKEYE. <b>See closures below.</b>
	Oct. 1-Oct. 31	CHINOOK - min. size 22". Other SALMON species - no min. size. Daily limit 2 (combined). Only 1 CHINOOK may be retained. <b>See closures below. See Dungeness Bay Fishery and Closure below.</b>
	Dec. 1-Apr. 10	CHINOOK - min. size 22". Other SALMON species - no min. size. Daily limit 2 (combined). Release wild CHINOOK. <b>See Dungeness Bay Fishery and Closure below. Season may close earlier if CHINOOK guideline is attained.</b>
Dungeness Bay Fishery (see below for boundaries)	Oct. 1-Oct. 31	No min. size. Daily limit 2 COHO only.
TROUT	Year-round	Catch-and-release except up to 2 hatchery STEELHEAD may be retained. <b>See Freshwater Bay Closure below.</b>
STURGEON	Year-round	Catch-and-release.
MACKEREL	Year-round	No min. size. No daily limit.
HERRING, ANCHOVY, SARDINE, SAND LANCE, and SMELT*	Year-round	No min. size. Daily limit 10 lbs., all species combined. All SMELT caught must be kept and count toward the daily limit except <b>CLOSED</b> to Columbia River SMELT (eulachon). HERRING - CLOSED Jan. 16-Apr. 15 south of a line from Ediz Hook to Partridge Point. <b>For SMELT:</b> Jig gear may be used 7 days a week. Dipnets may be used 8:00 a.m. Fridays through 8:00 a.m. Wednesdays.
*Check the WDFW website at <a href="http://wdfw.wa.gov">wdfw.wa.gov</a> or call (360) 902-2700 for updates on SMELT. The Fish and Wildlife Commission is considering changes in June 2014.		
PACIFIC HALIBUT**	May 9-June 7, 2014	May 9-May 10: <b>Open Friday and Saturday ONLY.</b> May 17: <b>Saturday ONLY.</b> May 22-May 25: <b>Thursday through Sunday ONLY.</b> May 29-May 31: <b>Thursday through Saturday ONLY.</b> June 7: <b>Saturday ONLY.</b> No min. size. Daily limit 1.
**Check the WDFW website at <a href="http://wdfw.wa.gov">wdfw.wa.gov</a> or call (360) 902-2700 in March 2015 for updates on the 2015 opening for PACIFIC HALIBUT.		
<b>BOTTOMFISH</b>	Year-round season. Daily limit is a total of 15 BOTTOMFISH (see definition page 10) regardless of species, subject to individual limits and seasons shown below. <b>See Freshwater Bay Closure below.</b> Fishing for BOTTOMFISH prohibited in waters deeper than 120 feet. <b>Exception:</b> retention of LINGCOD, and PACIFIC COD allowed on days when HALIBUT is open.	
LINGCOD	May 1-June 15 May 21-June 15	<b>Hook and line season.</b> Min. size 26". Max. size 36". Daily limit 1. <b>Spearfishing season.</b> Max. size 36". Daily limit 1.
SURFPERCH	Year-round	No min. size. Daily limit 10. Except SHINER PERCH daily limit 15: not included in BOTTOMFISH limit.
ROCKFISH	CLOSED	CLOSED to fishing for, retaining, or possessing.
PACIFIC COD, POLLOCK, HAKE	Year-round	No min. size. Daily limit 2 of each species.
CABEZÓN	May 1-Nov. 30	Min. size 18". Daily limit 1.
WOLF-EEL	Year-round	CLOSED to retention.
SIXGILL, SEVENGILL, and THRESHER SHARKS	CLOSED	CLOSED to fishing for, retaining, or possessing. SIXGILL SHARK may not be removed from the water.
<b>OTHER FOOD FISH</b>	Year-round	No min. size. Daily limit 2 of each species.
<b>ALL OTHER FISH</b>	CLOSED	CLOSED to fishing for, retaining, or possessing.

## CLOSURES:

**Dungeness Bay Fishery and Closure:** Waters of Dungeness Bay inside of a line from Dungeness Spit Lighthouse to the #2 Red Buoy, then to the Port Williams boat ramp. Oct. 1-Oct. 31: OPEN to fishing for COHO SALMON. CLOSED to fishing for SALMON at all other times. See Dungeness Bay Fishery above for rules.

**Freshwater Bay Closure:** July 1-Oct. 31: waters of Freshwater Bay south of a line from Angeles Point westerly approximately 4 miles to Observatory Point (Bachelor Rock) closed to fishing for ALL species.

**Port Angeles Harbor Closure:** July 1-Oct. 31: waters of Port Angeles Harbor west of a line from the tip of Ediz Hook to the ITT Rayonier Dock closed to fishing for SALMON.

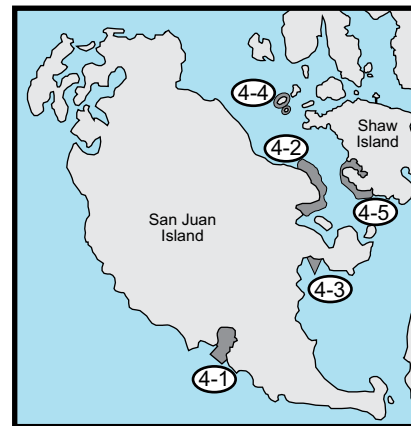
**Sequim Bay Closure:** Oct. 1-Oct. 31: waters of Sequim Bay south of a line from the southern end of Gibson Spit to the west end of Travis Spit CLOSED to fishing for SALMON.

**Discovery Bay Closure:** Oct. 1-Oct. 31: waters of Discovery Bay south of a line from the Gardiner boat ramp to Beckett Point CLOSED to fishing for SALMON.

# Marine Area 7 Map



- ① **Bellingham Bay Closure and Fishery:** Waters of Bellingham and Padilla bays south and east of a line from Gooseberry Pt. to Sandy Pt. to Pt. Migley, from Carter Pt. to north tip of Vendovi Island to Clark Pt., and true west from Yellow Bluff (southwest corner of Guemes Island) to Yellow Bluff Reef Range Marker to Washington State Dept. of Transportation ferry terminal dock east of Shannon Pt. and north of the railroad bridges at Swinomish Slough.  
 May 1-Aug. 15: CLOSED to fishing for SALMON.  
 Aug. 16-Oct. 31: OPEN to fishing for SALMON. (see rules for Bellingham Bay Fishery on next page).  
 Nov. 1-Mar. 31: same rules as Marine Area 7 - ENTIRE AREA.  
 Apr. 1-June 30: CLOSED to fishing for SALMON.
- ② **Samish Bay Closure:** Waters of Samish Bay lying south of a line running true east from Fish Point - same rules as Marine Area 7 - ENTIRE AREA, except Apr. 1-Apr. 30 and July 1-Oct. 15: CLOSED to fishing for SALMON and Oct. 16-Oct. 31: same rules as Bellingham Bay Fishery.
- ③ **Lummi Indian Reservation and Lummi Bay Closure:** Reservation CLOSED to non-Indian fishing and/or access. Waters east of a line from Gooseberry Point to Sandy Point same rules as Marine Area 7 - ENTIRE AREA except Sept. 2-Oct. 15: CLOSED to fishing for SALMON.



## San Juan Islands Marine Preserve

Closed to all shellfish and bottomfish activities (except crabbing in Parks Bay on Shaw Island).

- ④ **San Juan Islands Marine Preserve (False Bay, Friday Harbor, Argyle Lagoon, Yellow and Low Islands, and Shaw Island):** Closed to all SHELLFISH and BOTTOMFISH activity (except crabbing in Parks Bay on Shaw Island). Yellow and Low Islands also closed to SALMON fishing.
- ④-1 **False Bay:** The tidelands and bedlands of False Bay on San Juan Island, including all University of Washington (UW)-owned tidelands and bedlands beginning at a marker 400' east of the east entrance of False Bay and extending to the entrance of False Bay, all UW-owned tidelands and bedlands within a line beginning at the UW marker on the shore at the east entrance of False Bay, projected 500 yards offshore, then northwest to a point 500 yards offshore along a line projected from a UW marker on the shore at the west side of a small peninsula at the west entrance of False Bay, then to shore along the line to the marker, and all UW-owned tidelands west of the marker to a UW marker 600' west of the small peninsula.
- ④-2 **Friday Harbor:** Those tidelands and bedlands adjacent to San Juan Island within a line beginning on the shore 500 yards west of Point Caution, then 500 yards offshore, then south and east following the shoreline to the intersection with a line projected from a UW marker located 100' north of the north entrance of the floating breakwater of the Port of Friday Harbor and projected toward Reid Rock Buoy, then along the line to shore on San Juan Island.
- ④-3 **Argyle Lagoon:** Those UW-owned tidelands and all bedlands enclosed by the inner spit of Argyle Lagoon on San Juan Island.
- ④-4 **Yellow and Low Islands Preserve:** All tidelands and bedlands within 300 yards of Yellow Island and 300 yards of Low Island. Also closed to SALMON fishing.
- ④-5 **Shaw Island:** Those tidelands and bedlands within a line beginning at a UW marker on the shore at Hicks Bay 122°58.25'W longitude, then due south 500 yards, then north and west at a distance of 500 yards from shore to the intersection with a line projected 261° true from a UW marker on the shore of Parks Bay, which passes just south of the unnamed island at the north end of Parks Bay, then along the line to the shore of Shaw Island, including all tidelands and bedlands of Parks Bay south of the line.

# Marine Area 7 - San Juan Islands

(All marine waters north of the Trial Island line described under Area 6 to the United States-Canada boundary)

SPECIES	SEASON	ADDITIONAL RULES
SALMON - ENTIRE AREA	July 1-July 31	CHINOOK - min. size 22". Other SALMON species - no min. size. Daily limit 2 (combined) plus 2 additional SOCKEYE. Only 1 CHINOOK may be retained. <b>See Southern Rosario Strait/Eastern Strait of Juan de Fuca Closure below. See Bellingham Bay Closure and Fishery, Samish Bay Closure, and Yellow and Low Islands Preserve on previous page.</b>
	Aug. 1-Sept. 30	CHINOOK - min. size 22". Other SALMON species - no min. size. Daily limit 2 (combined). Only 1 CHINOOK may be retained. Release wild COHO and CHUM. Aug. 1-Aug. 31: daily limit may include 2 additional SOCKEYE. <b>See Southern Rosario Strait/ Eastern Strait of Juan de Fuca Closure below. See Bellingham Bay Closure and Fishery, Samish Bay Closure, Lummi Reservation and Bay Closure, and Yellow and Low Islands Preserve on previous page.</b>
	Oct. 1-Oct. 31	CHINOOK - min. size 22". Other SALMON species - no min. size. Daily limit 2 (combined). Release wild CHINOOK and wild COHO. <b>See Bellingham Bay Closure and Fishery, Samish Bay Closure, Lummi Reservation and Bay Closure, and Yellow and Low Islands Preserve on previous page.</b>
	Dec. 1-Apr. 30	CHINOOK - min. size 22". Other SALMON species - no min. size. Daily limit 2 (combined). Release wild CHINOOK. <b>See Bellingham Bay Closure and Fishery, and Yellow and Low Islands Preserve on previous page. <span style="background-color: yellow;">Season may close earlier if CHINOOK guideline is attained.</span></b>
Bellingham Bay Fishery (see ① on previous page for boundaries)	Aug. 16-Oct. 31	CHINOOK - min. size 22". Other SALMON species - no min. size. Daily limit 4 (combined). Up to 2 CHINOOK may be retained. Oct. 1-Oct. 31: release wild CHINOOK. <b>See Samish Bay Closure on previous page.</b>
TROUT	Year-round	Catch-and-release except up to 2 hatchery STEELHEAD may be retained.
STURGEON	Year-round	Catch-and-release.
MACKEREL	Year-round	No min. size. No daily limit.
HERRING, ANCHOVY, SARDINE, SAND LANCE, and SMELT*	Year-round	No min. size. Daily limit 10 lbs., all species combined. All SMELT caught must be kept and count toward the daily limit except <b>CLOSED</b> to Columbia River SMELT (eulachon). HERRING - <b>CLOSED</b> year-round north of a line from Sandy Point to Patos Island to the Canadian boundary. <b>For SMELT:</b> Jig gear may be used 7 days a week. Dipnets may be used 8:00 a.m. Fridays through 8:00 a.m. Wednesdays.
*Check the WDFW website at <a href="http://wdfw.wa.gov">wdfw.wa.gov</a> or call (360) 902-2700 for updates on SMELT. The Fish and Wildlife Commission is considering changes in June 2014.		
PACIFIC HALIBUT**	May 9-June 7, 2014	May 9-May 10: <b>Open Friday and Saturday ONLY.</b> May 17: <b>Saturday ONLY.</b> May 22-May 25: <b>Thursday through Sunday ONLY.</b> May 29-May-31: <b>Thursday through Saturday ONLY.</b> June 7: <b>Saturday ONLY.</b> No min. size. Daily limit 1.
**Check the WDFW website at <a href="http://wdfw.wa.gov">wdfw.wa.gov</a> or call (360) 902-2700 in March 2015 for updates on the 2015 opening for PACIFIC HALIBUT.		
<b>BOTTOMFISH</b>	Year-round season. Daily limit is a total of 15 BOTTOMFISH (see definition page 10) regardless of species, subject to individual limits and seasons shown below. <b>See closures on previous page.</b> Fishing for BOTTOMFISH prohibited in waters deeper than 120 feet. <b>Exception:</b> retention of LINGCOD and PACIFIC COD allowed on days when HALIBUT is open.	
LINGCOD	May 1-June 15 May 21-June 15	<b>Hook and line season.</b> Min. size 26". Max. size 36". Daily limit 1. <b>Spearfishing season.</b> Max. size 36". Daily limit 1.
SURFPERCH	Year-round	No min. size. Daily limit 10. Except SHINER PERCH daily limit 15: not included in BOTTOMFISH limit.
ROCKFISH	CLOSED	CLOSED to fishing for, retaining, or possessing.
PACIFIC COD, POLLOCK, HAKE	Year-round	No min. size. Daily limit 2 of each species.
CABEZON	May 1-Nov. 30	Min. size 18". Daily limit 1.
WOLF-EEL	Year-round	CLOSED to retention.
SIXGILL, SEVENGILL, and THRESHER SHARKS	CLOSED	CLOSED to fishing for, retaining, or possessing. SIXGILL SHARK may not be removed from the water.
<b>OTHER FOOD FISH</b>	Year-round	No min. size. Daily limit 2 of each species.
<b>ALL OTHER FISH</b>	CLOSED	CLOSED to fishing for, retaining, or possessing.

BOTTOMFISH

Marine Areas

- ⑤ **Southern Rosario Strait/Eastern Strait of Juan de Fuca Closure:** Waters of Area 7 in Rosario Strait and the eastern portion of the Strait of Juan de Fuca southerly of a line running true south from the westernmost point on Fidalgo Head to Burrows Island, then westerly and southerly along the shore of Burrows Island to the Burrows Island Lighthouse, then westerly to Bird Rocks, then westerly from Bird Rocks to the southernmost point on Decatur Island, then southerly across Lopez Pass to Lopez Island and following the shore of Lopez Island southerly and westerly to Iceberg Point, then from Iceberg Point to Cattle Point, then south southwest to the Salmon Bank Buoy, and then true south from the Salmon Bank Buoy to the Area 7 boundary - July 1-Sept. 30: CLOSED to fishing for SALMON. Oct. 1-June 30: same rules as Marine Area 7 - ENTIRE AREA.



Be Whale Wise

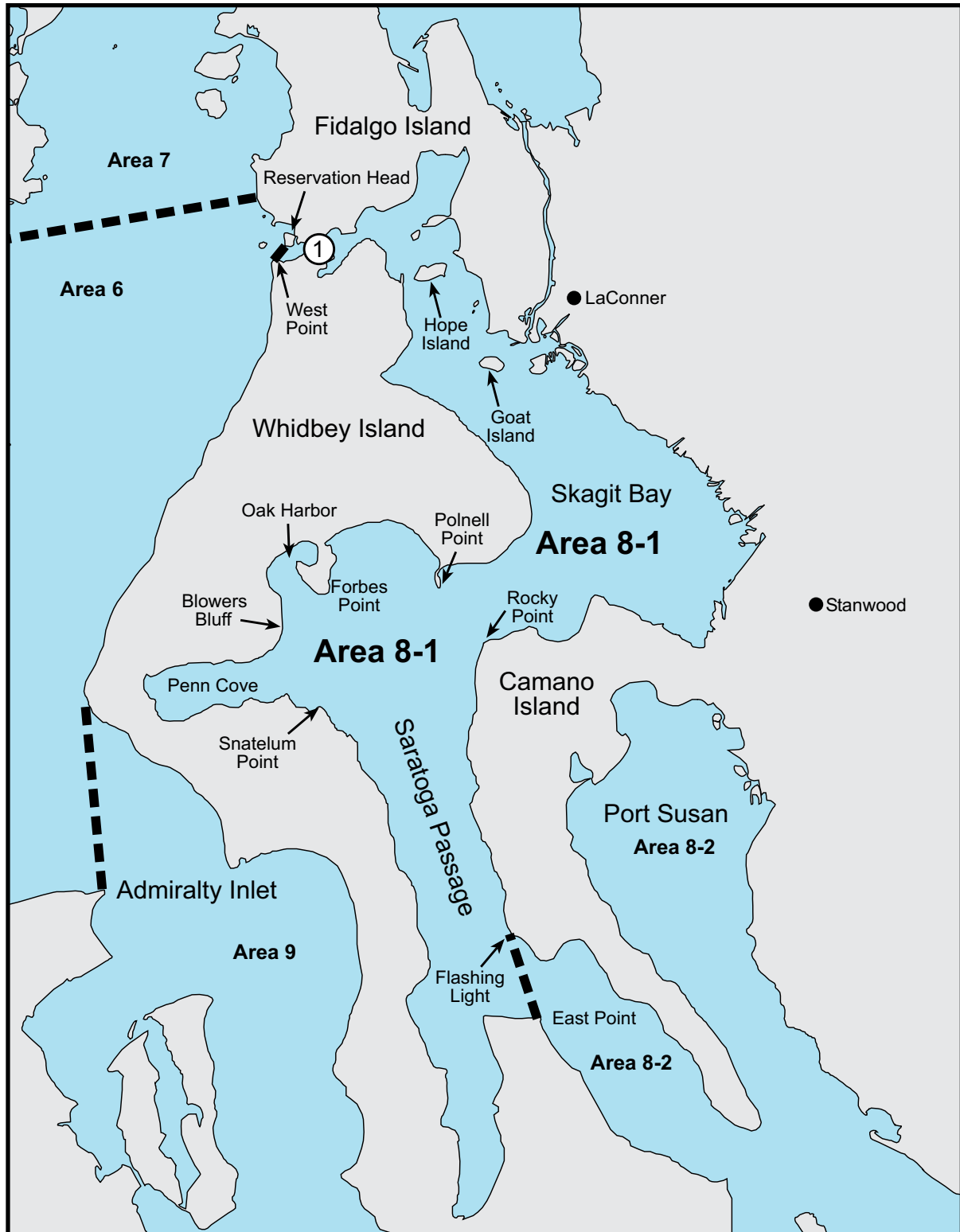
Recreational anglers and boaters are not exempt from laws protecting killer whales and other marine mammals.

Know the laws.

Learn more at [www.nwr.noaa.gov/marine-mammals](http://www.nwr.noaa.gov/marine-mammals) or [wdfw.wa.gov/conservation/orca](http://wdfw.wa.gov/conservation/orca)



# Marine Area 8-1 Map



① Deception Pass (Octopus Protection Area): CLOSED to the harvest of OCTOPUS.

## Pacific Herring

Size: up to 10"

Color: silver with dark blue-green back.

Look for: deeply forked tail and lack of adipose fin.



# Marine Area 8-1 - Deception Pass, Hope Island, and Skagit Bay

(From West Point to Reservation Head eastward through Deception Pass, including all waters of Swinomish Slough and Skagit Bay, and the portion of Saratoga Passage north and west of a line from East Point Light to light on Camano Island (Saratoga Pass light #4 Fl Red 4 Sec))

SPECIES	SEASON	ADDITIONAL RULES
SALMON - ENTIRE AREA	Aug. 1-Oct. 31	No min. size. Daily limit 2 (combined). Release CHINOOK.
	Nov. 1-Apr. 30	CHINOOK - min. size 22". Other SALMON species - no min. size. Daily limit 2 (combined). Release wild CHINOOK. <b>Season may close earlier if CHINOOK guideline is attained.</b>
TROUT	Year-round	Catch-and-release except up to 2 hatchery STEELHEAD may be retained.
STURGEON	Year-round	Catch-and-release.
MACKEREL	Year-round	No min. size. No daily limit.
HERRING, ANCHOVY, SARDINE, SAND LANCE, SMELT*	Year-round	No min. size. Daily limit 10 lbs., all species combined. All SMELT caught must be kept and count toward the daily limit except <b>CLOSED</b> to Columbia River SMELT (eulachon). <b>For SMELT:</b> Jig gear may be used 7 days a week. Dipnets may be used 8:00 a.m. Fridays through 8:00 a.m. Wednesdays.
*Check the WDFW website at <a href="http://wdfw.wa.gov">wdfw.wa.gov</a> or call (360) 902-2700 for updates on SMELT. The Fish and Wildlife Commission is considering changes in June 2014.		
PACIFIC HALIBUT**	May 9-June 7, 2014	May 9-May 10: <b>Open Friday and Saturday ONLY.</b> May 17: <b>Saturday ONLY.</b> May 22-May 25: <b>Thursday through Sunday ONLY.</b> May 29-May 31: <b>Thursday through Saturday ONLY.</b> June 7: <b>Saturday ONLY.</b> No min. size. Daily limit 1.
**Check the WDFW website at <a href="http://wdfw.wa.gov">wdfw.wa.gov</a> or call (360) 902-2700 in March 2015 for updates on the 2015 opening for PACIFIC HALIBUT.		

BOTTOMFISH

<b>BOTTOMFISH</b>	Year-round season. Daily limit is a total of 15 BOTTOMFISH (see definition page 10) regardless of species, subject to individual limits and seasons shown below. Fishing for BOTTOMFISH prohibited in waters deeper than 120 feet. <b>Exception:</b> retention of LINGCOD allowed on days when HALIBUT is open.	
LINGCOD	May 1-June 15 May 21-June 15	<b>Hook and line season.</b> Min. size 26". Max. size 36". Daily limit 1. <b>Spearfishing season.</b> Max. size 36". Daily limit 1.
SURFPERCH	Year-round	No min. size. Daily limit 10. Except SHINER PERCH daily limit 15: not included in BOTTOMFISH limit.
ROCKFISH	CLOSED	CLOSED to fishing for, retaining, or possessing.
PACIFIC COD, POLLOCK, HAKE, and WOLF-EEL	Year-round	CLOSED to retention.
SIXGILL, SEVENGILL, and THRESHER SHARKS	CLOSED	CLOSED to fishing for, retaining, or possessing. SIXGILL SHARK may not be removed from the water.
CABEZON	May 1-Nov. 30	Min. size 18". Daily limit 1.
<b>OTHER FOOD FISH</b>	Year-round	No min. size. Daily limit 2 of each species.
<b>ALL OTHER FISH</b>	CLOSED	CLOSED to fishing for, retaining, or possessing.



**Pacific Cod**

Brown to grey body with lighter mottling. Three fins on back and a large "whisker" under lower jaw. Also called true cod and grey cod.



**Pacific Hake**

Body dark or silver grey becoming silvery below. Two fins on back, the second being deeply notched. Black inside mouth. Large mouth with sharp teeth. Also called whiting.



**Cabezon**

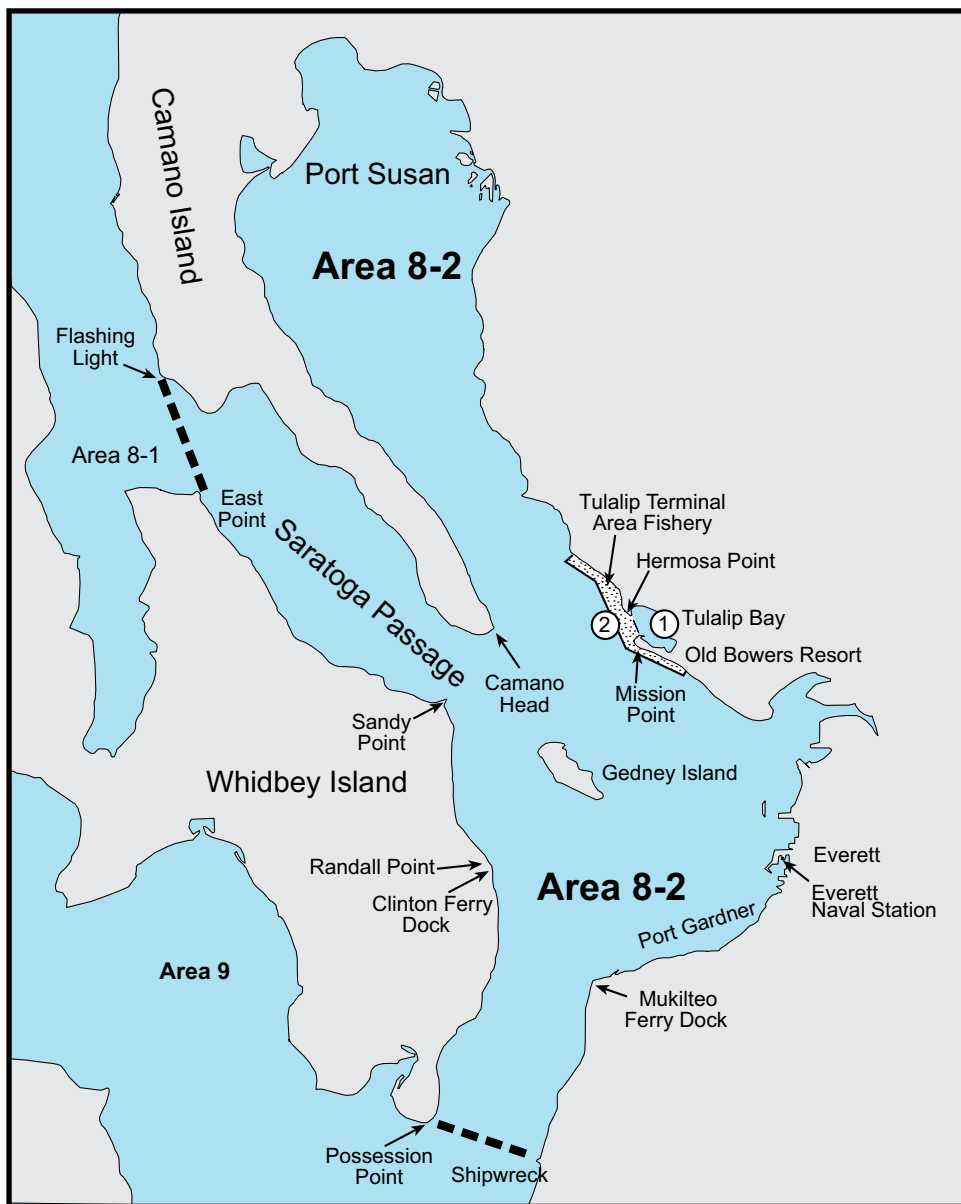
Body olive green to grey with lighter mottling. Two fins on back. Skin flap between nostrils. Small teeth.



**Walleye Pollock**

Body brown with mottling, usually with several stripes along the body. Three fins on back. The "whisker" under lower jaw is absent or very small. Large eye with small pupil.

# Marine Area 8-2 Map



- ① **Tulalip Bay Closure:** Closed to all fishing east of a line from Mission Point to Hermosa Point.
- ② **Tulalip Terminal Area Salmon Fishery:** Waters west of a line from Mission Point to Hermosa Point and contained within 2,000' off shore between the pilings at Old Bowers Resort (48°02.88'N, 122°16.42'W) to 2,000' from shore (48°02.63'N, 122°16.79'W) and north to 2,000' from shore (48°04.36'N, 122°19.06'W) of the boundary marker approximately 1.4 miles north of Hermosa Point (48°04.57'N, 122°18.64'W). Same SALMON rules as Marine Area 8-2 - ENTIRE AREA, except May 30–Sept. 21, 2014 and May 29–June 29, 2015: see Tulalip Terminal Area Fishery on next page for rules.



## Lingcod

Body dark brown, grey or green with mottling on sides. A single long fin on back with only one notch. Large mouth with large teeth. Can reach five feet in length.



## Dogfish Shark

Dark brown upper body with white belly, white spots sometimes on upper body. Single prominent spines in front of each dorsal fin. Lacks an anal fin.

# Marine Area 8-2 - Port Susan and Port Gardner

(East of East Point Light-Camano Island Light line (described in Area 8-1) and north of the Possession Point-Shipwreck line)

SPECIES	SEASON	ADDITIONAL RULES
SALMON - ENTIRE AREA	Aug. 1-Oct. 31	No min. size. Daily limit 2 (combined). Release CHINOOK. See Tulalip Terminal Area Fishery and Tulalip Bay Closure on previous page.
	Nov. 1-Apr. 30	CHINOOK - min. size 22". Other SALMON species - no min. size. Daily limit 2 (combined). Release wild CHINOOK. See Tulalip Bay Closure on previous page. <b>Season may close earlier if CHINOOK guideline is attained.</b>
Tulalip Terminal Area Fishery (see 2 on previous page for boundaries)	May 30-Sept. 1, 2014 May 29-June 29, 2015	<b>Open Fridays through Noon Mondays ONLY. CLOSED June 21, 2014 and June 13, 2015.</b> CHINOOK - min. size 22". Other SALMON species - no min. size. Daily limit 2 (combined). <b>Anglers may fish with two poles with Two-Pole Endorsement. See Tulalip Bay Closure on previous page.</b>
	Sept. 6-Sept. 21	<b>Open Saturdays and Sundays ONLY.</b> CHINOOK - min. size 22". Other SALMON species - no min. size. Daily limit 2 (combined). <b>Anglers may fish with two poles with Two-Pole Endorsement. See Tulalip Bay Closure on previous page.</b>
TROUT	Year-round	Catch-and-release except up to 2 hatchery STEELHEAD may be retained.
STURGEON	Year-round	Catch-and-release.
MACKEREL	Year-round	No min. size. No daily limit.
HERRING, ANCHOVY, SARDINE, SAND LANCE, and SMELT*	Year-round	No min. size. Daily limit 10 lbs., all species combined. All SMELT caught must be kept and count toward the daily limit except <b>CLOSED</b> to Columbia River SMELT (eulachon). <b>For SMELT:</b> Jig gear may be used 7 days a week. Dipnets may be used 8:00 a.m. Fridays through 8:00 a.m. Wednesdays.
*Check the WDFW website at <a href="http://wdfw.wa.gov">wdfw.wa.gov</a> or call (360) 902-2700 for updates on SMELT. The Fish and Wildlife Commission is considering changes in June 2014.		
PACIFIC HALIBUT**	May 9-June 7, 2014	May 9-May 10: <b>Open Friday and Saturday ONLY.</b> May 17: <b>Saturday ONLY.</b> May 22-May 25: <b>Thursday through Sunday ONLY.</b> May 29-May 31: <b>Thursday through Saturday ONLY.</b> June 7: <b>Saturday ONLY.</b> No min. size. Daily limit 1.
**Check the WDFW website at <a href="http://wdfw.wa.gov">wdfw.wa.gov</a> or call (360) 902-2700 in March 2015 for updates on the 2015 opening for PACIFIC HALIBUT.		

BOTTOMFISH

<b>BOTTOMFISH</b>	Year-round season. Daily limit is a total of 15 BOTTOMFISH (see definition page 10) regardless of species, subject to individual limits and seasons shown below. See Tulalip Bay closure on previous page. Fishing for BOTTOMFISH prohibited in waters deeper than 120 feet. <b>Exception:</b> retention of LINGCOD allowed on days when HALIBUT is open.
LINGCOD	May 1-June 15 May 21-June 15 <b>Hook and line season.</b> Min. size 26". Max. size 36". Daily limit 1. <b>Spearfishing season.</b> Max. size 36". Daily limit 1.
SURFPERCH	Year-round No min. size. Daily limit 10. Except SHINER PERCH daily limit 15: not included in BOTTOMFISH limit.
ROCKFISH	CLOSED CLOSED to fishing for, retaining, or possessing.
PACIFIC COD, POLLOCK, HAKE, and WOLF-EEL	Year-round CLOSED to retention.
SIXGILL, SEVENGILL, and THRESHER SHARKS	CLOSED CLOSED to fishing for, retaining, or possessing. SIXGILL SHARK may not be removed from the water.
CABEZÓN	May 1-Nov. 30 Min. size 18". Daily limit 1.
<b>OTHER FOOD FISH</b>	Year-round No min. size. Daily limit 2 of each species.
<b>ALL OTHER FISH</b>	CLOSED CLOSED to fishing for, retaining, or possessing.

Pile Perch



**Size:** up to 17"  
**Color:** dusky to silvery gray, with dark bar in middle of body.  
**Look for:** deeply forked tail and dark spot on gill cover.

Striped Perch



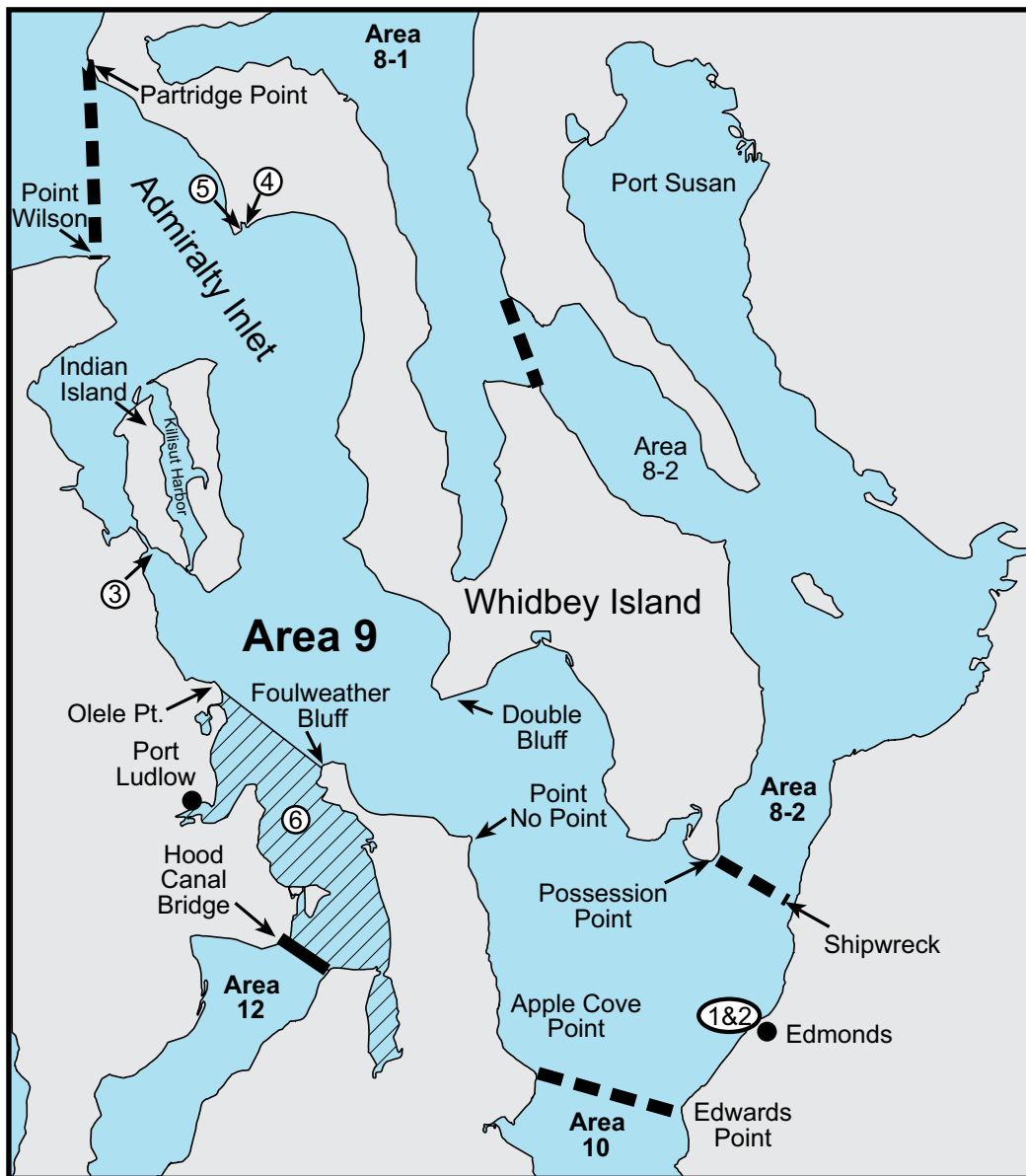
**Size:** up to 15"  
**Color:** blue and yellow stripes on side of body.  
**Look for:** bright color pattern.

Sanddab



**Size:** up to 16"  
**Color:** one side is off-white; other side is brown with mottling.  
**Look for:** left-eyed fish, squared caudal fin.

# Marine Area 9 Map



- ① **Edmonds Public Fishing Pier:** Waters inside a line from the boundary marker on the north breakwater to the southernmost marker buoy; then to the northernmost marker buoy; then to the north end of the city of Edmonds public beach. CLOSED to fishing for Food Fish and to the harvest of SHELLFISH except when fishing from the pier.
- ② **Brackett's Landing Shoreline Sanctuary:** Bedlands and tidelands owned by the city of Edmonds at Brackett's Landing Shoreline Sanctuary and the water column above them, including all of the area known as Edmonds Underwater Park. CLOSED to all harvest.
- ③ **Port Townsend Ship Canal/Portage Canal:** Tidelands on the eastern shore of the canal between Port Townsend Bay and Oak Bay.
- ④ **Keystone Conservation Area:** All waters, bedlands, and tidelands from Extreme High Water (EHW) out to 600' offshore of EHW that are located between the jetty at Keystone Harbor and the eastern side of the old military wharf (located east of the jetty). CLOSED to all harvest.
- ⑤ **Admiralty Head Marine Preserve:** All waters and bedlands below the Extreme Low Water starting at the extreme low tide line at 48°9.46'N, 122°40.88'W at the sign (in Fort Casey State Park), extending 400 yards offshore and northward parallel to the beach for 0.6 nautical miles. CLOSED to all harvest except sea urchins and sea cucumbers.
- ⑥ **Hood Canal Closure and Fishery:** Waters of Area 9 south of a line from Foulweather Bluff to Olele Point, July 16-Aug. 31: CLOSED to fishing for SALMON except lawful to fish from shore between the southern and northern boundaries of Salsbury Point Park. Daily limit 2 COHO only. **Visitors, please be aware that walking or wading onto private property or tidelands adjacent to Salsbury Point Park without permission is considered criminal trespass and will be enforced.**

# Marine Area 9 - Admiralty Inlet

(All waters inside and south of the Partridge Point – Point Wilson line, south and west of a line from Possession Point 110° true to shipwreck, north of the Hood Canal Bridge, and north of the Apple Cove Point-Edwards Point line.)

SPECIES	SEASON	ADDITIONAL RULES	
SALMON - ENTIRE AREA	July 1-July 15	No min. size. Daily limit 2 (combined). Release CHINOOK and CHUM.	
	July 16-Aug. 15	CHINOOK - min. size 22". Other SALMON species - no min. size. Daily limit 2 (combined). Only 1 CHINOOK may be retained. Release wild CHINOOK and CHUM. <b>CHINOOK retention is expected to last through early August and will close when guideline is attained. See Hood Canal Closure and Fishery on previous page.</b>	
	Aug. 16-Sept. 30	No min. size. Daily limit 2 (combined). Release CHINOOK and CHUM. <b>See Hood Canal Closure and Fishery on previous page.</b>	
	Oct. 1-Oct. 31	No min. size. Daily limit 2 (combined). Release CHINOOK.	
	Nov. 1-Nov. 30	CHINOOK - min. size 22". Other SALMON species - no min. size. Daily limit 2 (combined). Release wild CHINOOK.	
	Jan. 16-Apr. 15	CHINOOK - min. size 22". Other SALMON species - no min. size. Daily limit 2 (combined). Release wild CHINOOK. <b>Season may close earlier if CHINOOK guideline is attained.</b>	
Edmonds Public Fishing Pier	Year-round	CHINOOK - min. size 22". Other SALMON species - no min. size. Daily limit 2 (combined). Only 1 CHINOOK may be retained. Aug. 1-Sept. 30: release CHUM.	
TROUT	Year-round	Catch-and-release except up to 2 hatchery STEELHEAD may be retained.	
STURGEON	Year-round	Catch-and-release.	
MACKEREL	Year-round	No min. size. No daily limit.	
HERRING, ANCHOVY, SARDINE, SAND LANCE, and SMELT*	Year-round	No min. size. Daily limit 10 lbs., all species combined. All SMELT caught must be kept and count toward the daily limit except <b>CLOSED</b> to Columbia River SMELT (eulachon). <b>For SMELT:</b> Jig gear may be used 7 days a week. Dipnets may be used 8:00 a.m. Fridays through 8:00 a.m. Wednesdays.	
*Check the WDFW website at <a href="http://wdfw.wa.gov">wdfw.wa.gov</a> or call (360) 902-2700 for updates on SMELT. The Fish and Wildlife Commission is considering changes in June 2014.			
PACIFIC HALIBUT**	May 9-June 7, 2014	May 9-May 10: <b>Open Friday and Saturday ONLY.</b> May 17: <b>Saturday ONLY.</b> May 22-May 25: <b>Thursday through Sunday ONLY.</b> May 29-May-31: <b>Thursday through Saturday ONLY.</b> June 7: <b>Saturday ONLY.</b> No min. size. Daily limit 1.	
**Check the WDFW website at <a href="http://wdfw.wa.gov">wdfw.wa.gov</a> or call (360) 902-2700 in March 2015 for updates on the 2015 opening for PACIFIC HALIBUT.			
<b>BOTTOMFISH</b>	Year-round season. Daily limit is a total of 15 BOTTOMFISH (see definition page 10) regardless of species, subject to individual limits and seasons shown below. Fishing for BOTTOMFISH prohibited in waters deeper than 120 feet. <b>Exception:</b> retention of LINGCOD allowed on days when HALIBUT is open.		
	LINGCOD	May 1-June 15 May 21-June 15	<b>Hook and line season.</b> Min. size 26". Max. size 36". Daily limit 1. <b>Spearfishing season.</b> Max. size 36". Daily limit 1.
	SURFPERCH	Year-round	No min. size. Daily limit 10. Except SHINER PERCH daily limit 15: not included in BOTTOMFISH limit.
	ROCKFISH	CLOSED	CLOSED to fishing for, retaining, or possessing.
	PACIFIC COD, POLLOCK, HAKE, and WOLF-EEL	Year-round	CLOSED to retention.
	SIXGILL, SEVENGILL, and THRESHER SHARKS	CLOSED	CLOSED to fishing for, retaining, or possessing. SIXGILL SHARK may not be removed from the water.
	CABEZON	May 1-Nov. 30	Min. size 18". Daily limit 1.
	<b>OTHER FOOD FISH</b>	Year-round	No min. size. Daily limit 2 of each species.
	<b>ALL OTHER FISH</b>	CLOSED	CLOSED to fishing for, retaining, or possessing.

BOTTOMFISH

Marine Areas



**Rock Sole**  
**Size:** up to 23"  
**Color:** white on one side; top of body brown to green, small mouth.  
**Look for:** lateral line arches above the pectoral fin.



**Halibut**  
**Size:** up to 6'  
**Color:** white on one side; brown-gray on the other.  
**Look for:** large mouth and eyes on right side of body. Three points on tail.

# Marine Area 10 Map



Seattle Marine Preserves: Note signs at beach entrances. The area from high tide to minus 4.5' (extreme low water) between the coordinates listed below is CLOSED to harvest except for finfish by hook and line.

- (A) Carkeek Park Marine Preserve**  
122°22.82'W, 47°42.53'N to a sign at 122°22.79'W, 47°42.73'N  
**AND** 200 yards of beach starting 300 yards north of 122°22.79'W, 47°42.73'N
- (B) Golden Gardens Marine Preserve**  
122°24.12'W, 47°41.86'N south to the walkway sign
- (C) Discovery Park Marine Preserve**  
122°25.53'W, 47°39.45'N northeast to the sign at sidewalk  
**AND** 122°25.35'W, 47°40.06'N to a sign posted at 122°25.07'W, 47°40.19'N
- (D) Richey Viewpoint Marine Preserve**  
From the north edge of the park at 122°25.15'W, 47°34.50'N to 122°24.82'W, 47°34.34'N
- (E) Emma Schmitz Memorial Marine Preserve**  
The residential property fence at 122°24.44'W, 47°33.89'N south to SW Oregon St.
- (F) Lincoln Park Marine Preserve**  
The flagpole at 122°24.08'W, 47°31.83'N to the sign posted at 122°23.67'W, 47°31.55'N

See DOH Fish Consumption advisories for Dyes Inlet (Ostrich Bay), Eagle Harbor, King County, Manchester State Park, and Sinclair Inlet, page 20.

- ① Puget Sound Naval Shipyard at Bremerton:** All waters within 150' of the pier head line CLOSED to fishing for Food Fish at all times.
- ② Chittenden Locks Closure:** Waters between Chittenden Locks and the Burlington-Northern Railroad bridge CLOSED to fishing. It is illegal to fish for Food Fish east of a line which is parallel to the Burlington-Northern Railroad bridge and approximately 175' west of the bridge, and which runs through the wooden piling tower structure near the south shore (west of the Chittenden Locks).
- ③ Elliott Bay Public Fishing Pier:** Waters within 100 yards of the Elliott Bay Public Fishing Pier CLOSED to fishing for Food Fish and the harvest of SHELLFISH except when fishing from the pier.
- ④ Duwamish Waterways Special Rules:** a) Downstream of 1st Ave. South Bridge is part of Marine Area 10. Record SALMON caught here as Marine Area 10 on your catch record card. b) July 1-Aug. 31: CLOSED to fishing for SALMON. c) Sept. 1-June 30: same rules as Area 10 - ENTIRE AREA. d) Additional restrictions Sept. 1-Oct. 31: from the 1st Ave. South Bridge downstream to an east-west line through SW Hanford St. on Harbor Island (including waters at the Spokane St. Bridge) - night closure, unlawful to use forage fish jig gear, anti-snagging rule, and only salmon hooked inside the mouth may be retained.
- ⑤ Orchard Rocks Conservation Area:** Waters and bedlands of Rich Passage within a 400 yard radius of Orchard Rocks CLOSED to all harvest. Closure does not affect privately owned fish in net pens and the harvest of clams, oysters, and mussels by tideland owners and their families.
- ⑥ Agate Pass Area:** Jan. 1-Mar. 31: catch-and-release and fly fishing only in waters west of a line from Point Monroe to Indianola and east of a line from Point Bolin to Battle Point. Lead-core line prohibited.
- ⑦ Shilshole Bay Closure:** July 1-Aug. 31: waters of Shilshole Bay southeast of a line from Meadow Point to West Point CLOSED to fishing for SALMON.
- ⑧ Elliott Bay Closure:** Waters of Elliott Bay east of a line from West Point to Alki Point CLOSED to salmon fishing July 1-Aug. 31.
- ⑨ Sinclair Inlet Fishery:** Waters of Sinclair Inlet and Port Orchard south of the Manette Bridge in Bremerton, south of a line drawn true west from Battle Point, and west of a line drawn true south from Point White - same rules as Marine Area 10 - ENTIRE AREA, except July 1-Sept. 30.
- ⑩ Alki Beach Junk Yard (Octopus Protection Area):** CLOSED to the harvest of OCTOPUS.
- ⑪ Seacrest Park Coves 1, 2, and 3 (Octopus Protection Area):** CLOSED to the harvest of OCTOPUS.

# Marine Area 10 - Seattle/Bremerton Area

(From the Apple Cove Point-Edwards Point to a line projected true east-west through the north tip of Vashon Island)

SPECIES	SEASON	ADDITIONAL RULES
SALMON - ENTIRE AREA	June 1-June 30	Catch-and-release. Open only north of a line from Point Monroe to Meadow Point.
	July 1-July 15	No min. size. Daily limit 2 (combined). Release CHINOOK. <b>See Shilshole Bay Closure, Elliott Bay Closure, and Sinclair Inlet Fishery on previous page.</b>
	July 16-Aug. 15	CHINOOK - min. size 22". Other SALMON - no min. size. Daily limit 2 (combined). Only 1 CHINOOK may be retained. Release wild CHINOOK and CHUM. <b>CHINOOK retention is expected to last through early August and will close when guideline is attained. See Shilshole Bay Closure, Elliott Bay Closure, and Sinclair Inlet Fishery on previous page.</b>
	Aug. 16-Sept. 30	No min. size. Daily limit 2 (combined). Release CHINOOK. Aug. 16-Sept. 15: release CHUM. <b>See Duwamish Waterways Special Rules, Sinclair Inlet Fishery, Shilshole Bay Closure and Elliott Bay Closure on previous page.</b>
	Oct. 1-Jan. 31	CHINOOK - min. size 22". Other SALMON species - no min. size. Daily limit 2 (combined). Release wild CHINOOK. <b>Season may close earlier if CHINOOK guideline is attained. See Agate Pass Area and Duwamish Waterways Special Rules on previous page.</b>
Sinclair Inlet Fishery (see ⑨ on previous page for boundaries)	July 1-Sept. 30	CHINOOK - min. size 22". Other SALMON species - no min. size. Daily limit 3 (combined). Release wild CHINOOK. Aug. 1-Sept. 15: release CHUM. <b>Anglers may fish with two poles with Two-Pole Endorsement.</b>
Elliott Bay Fishing Pier at Terminal 86, Seacrest Pier, Waterman Pier, Bremerton Boardwalk, Illahee State Park Pier	Year-round	CHINOOK - min. size 22". Other SALMON species - no min. size. Daily limit 2 (combined). Only 1 CHINOOK may be retained. Aug. 1-Sept. 15: release CHUM.
TROUT	Year-round	Catch-and-release except up to 2 hatchery STEELHEAD may be retained.
STURGEON	Year-round	Catch-and-release.
MACKEREL	Year-round	No min. size. No daily limit.
HERRING, ANCHOVY, SARDINE, SAND LANCE, and SMELT*	Year-round	No min. size. Daily limit 10 lbs., all species combined. All SMELT caught must be kept and count toward the daily limit except <b>CLOSED</b> to Columbia River SMELT (eulachon). <b>For SMELT:</b> Jig gear may be used 7 days a week. Dipnets may be used 8:00 a.m. Fridays through 8:00 a.m. Wednesdays.
*Check the WDFW website at <a href="http://wdfw.wa.gov">wdfw.wa.gov</a> or call (360) 902-2700 for updates on SMELT. The Fish and Wildlife Commission is considering changes in June 2014.		
PACIFIC HALIBUT**	May 9-June 7, 2014	May 9-May 10: <b>Open Friday and Saturday ONLY.</b> May 17: <b>Saturday ONLY.</b> May 22-May 25: <b>Thursday through Sunday ONLY.</b> May 29-May-31: <b>Thursday through Saturday ONLY.</b> June 7: <b>Saturday ONLY.</b> No min. size. Daily limit 1.
**Check the WDFW website at <a href="http://wdfw.wa.gov">wdfw.wa.gov</a> or call (360) 902-2700 in March 2015 for updates on the 2015 opening for PACIFIC HALIBUT.		
<b>BOTTOMFISH</b>	<b>BOTTOMFISH</b>	Year-round season. Daily limit is a total of 15 BOTTOMFISH (see definition page 10) regardless of species, subject to individual limits and seasons as shown on previous page. <b>See Agate Pass Area on previous page.</b> Fishing for BOTTOMFISH prohibited in waters deeper than 120 feet. <b>Exception:</b> retention of LINGCOD allowed on days when HALIBUT is open.
	LINGCOD	May 1-June 15 May 21-June 15 <b>Hook and line season.</b> Min. size 26". Max. size 36". Daily limit 1. <b>Spearfishing season.</b> Max. size 36". Daily limit 1.
	SURFPERCH	Year-round No min. size. Daily limit 10. Except SHINER PERCH daily limit 15: not included in BOTTOMFISH limit.
	ROCKFISH	CLOSED CLOSED to fishing for, retaining, or possessing.
	PACIFIC COD, POLLOCK, HAKE, and WOLF-EEL	Year-round CLOSED to retention.
	SIXGILL, SEVENGILL, and THRESHER SHARKS	CLOSED CLOSED to fishing for, retaining, or possessing. SIXGILL SHARK may not be removed from the water.
	CABEZON	May 1-Nov. 30 Min. size 18". Daily limit 1.
	<b>OTHER FOOD FISH</b>	Year-round No min. size. Daily limit 2 of each species.
	<b>ALL OTHER FISH</b>	CLOSED CLOSED to fishing for, retaining, or possessing.

### Chinook

Jaw- has a dark mouth and black gums at the base of its teeth. Immature chinook are known as a "blackmouth."

Tail- both the upper and lower lobes of the tail are covered with spots and silver is prominent.



### Coho

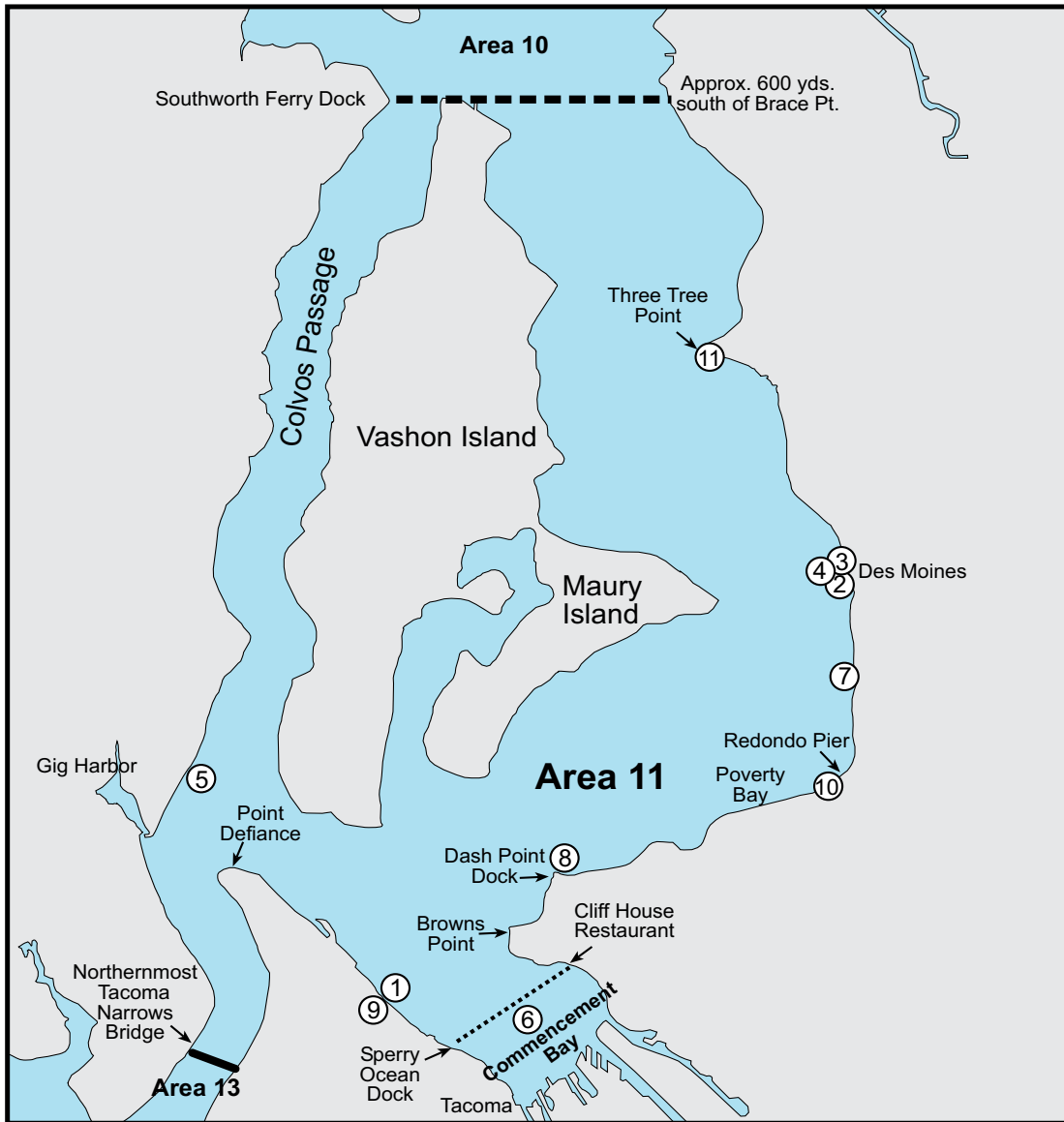
Jaw- mouth is white and the gum line is almost white, but the tongue may be black. The teeth are sharp and strong.

Tail- has just a few scattered spots, usually on the upper lobe, with silver streaks. It has a wide caudal peduncle.





# Marine Area 11 Map



- ① **Les Davis Fishing Pier:** Waters within 100 yards of the Les Davis Fishing Pier, CLOSED to fishing for Food Fish and to the harvest of SHELLFISH except when fishing from the pier.
- ② **Des Moines Fishing Pier:** Waters within 100 yards of the Des Moines Public Fishing Pier, CLOSED to fishing for Food Fish and to the harvest of SHELLFISH except when fishing from the pier.
- ③ **City of Des Moines Park Conservation Area:** CLOSED to all harvest.
- ④ **South 239th Street Park Conservation Area:** CLOSED to all harvest.
- ⑤ **Colvos Passage Marine Preserve:** Area enclosed by a line starting at extreme low water 300' SW of the southern boundary of Sunrise County Park, Pierce Co. (latitude 47°20.9'N) due east 300', then southwesterly paralleling the shoreline for 500', then west to the extreme low water line, then northeasterly along extreme low water line to point of origin, CLOSED to all harvest, except SALMON trolling allowed.
- ⑥ **Commencement Bay Closure:** Waters east of a line bearing 215° true (195°30' magnetic) from the Cliff House Restaurant on north shore (approximate position 47°17.85'N, 122°25.90'W) through Sperry Ocean Dock (approximate position 47°16.43'N, 122°27.37'W) - Apr. 1- Apr. 30, and June 1-July 31: CLOSED to fishing for SALMON. Aug. 1-Mar. 31 and May 1-May 31: same rules as Marine Area 11 - ENTIRE AREA. See Department of Health (DOH) Fish Consumption Advisory on page 20.
- ⑦ **Saltwater State Park Marine Preserve:** Those waters, bedlands, and tidelands of Saltwater State Park within a line projected from the northernmost marker at the DNR high tide line through 122°19.65'W, 47°22.42'N; then to 122°19.74'W, 47°22.44'N; then to 122°19.77'W, 47°22.36'N, then to 122°19.68'W, 47°22.34'N; then to the southernmost marker on the shoreline and back along the high tide line to the northernmost marker, CLOSED to all harvest.
- ⑧ **Dash Point Dock:** Waters within 100 yards of the Dash Point Dock, CLOSED to fishing for Food Fish and to the harvest of SHELLFISH except when fishing from the pier.
- ⑨ **Les Davis (Octopus Protection Area):** CLOSED to the harvest of OCTOPUS.
- ⑩ **Redondo Beach (Octopus Protection Area):** CLOSED to the harvest of OCTOPUS.
- ⑪ **Three Tree Point (Octopus Protection Area):** CLOSED to the harvest of OCTOPUS.

# Marine Area 11 - Tacoma-Vashon Island

(From the north tip of Vashon Island to the Northernmost Tacoma Narrows Bridge)

SPECIES	SEASON	ADDITIONAL RULES
SALMON - ENTIRE AREA	June 1-Dec. 31	CHINOOK - min. size 22". Other SALMON species - no min. size. Daily limit 2 (combined). Release wild CHINOOK. <b>See Commencement Bay Closure on previous page. Season may close earlier if CHINOOK guideline is attained.</b>
	Feb. 1-Apr. 30	CHINOOK - min. size 22". Other SALMON species - no min. size. Daily limit 2 (combined). Release wild CHINOOK. <b>See Commencement Bay closure on previous page. Season may close earlier if CHINOOK guideline is attained.</b>
Dash Point Dock, Les Davis Pier, Des Moines Pier, Redondo Pier, Point Defiance Boathouse Dock	Year-round	CHINOOK - min. size 22". Other SALMON species - no min. size. Daily limit 2 (combined). Only 1 CHINOOK may be retained.
TROUT	Year-round	Catch-and-release except up to 2 hatchery STEELHEAD may be retained.
STURGEON	Year-round	Catch-and-release.
MACKEREL	Year-round	No min. size. No daily limit.
HERRING, ANCHOVY, SARDINE, SAND LANCE, and SMELT*	Year-round	No min. size. Daily limit 10 lbs., all species combined. All SMELT caught must be kept and count toward the daily limit except <b>CLOSED</b> to Columbia River SMELT (eulachon). <b>For SMELT:</b> Jig gear may be used 7 days a week. Dipnets may be used 8:00 a.m. Fridays through 8:00 a.m. Wednesdays.
*Check the WDFW website at <a href="http://wdfw.wa.gov">wdfw.wa.gov</a> or call (360) 902-2700 for updates on SMELT. The Fish and Wildlife Commission is considering changes in June 2014.		
PACIFIC HALIBUT	CLOSED	CLOSED to fishing for, retaining, or possessing.
<b>BOTTOMFISH</b>	Year-round season. Daily limit is a total of 15 BOTTOMFISH (see definition page 10) regardless of species, subject to individual limits and seasons shown below. Fishing for BOTTOMFISH prohibited in waters deeper than 120 feet.	
LINGCOD	May 1-June 15 May 21-June 15	<b>Hook and line season.</b> Min. size 26". Max. size 36". Daily limit 1. <b>Spearfishing season.</b> Max. size 36". Daily limit 1.
SURFPERCH	Year-round	No min. size. Daily limit 10. Except SHINER PERCH daily limit 15: not included in BOTTOMFISH limit.
ROCKFISH	CLOSED	CLOSED to fishing for, retaining, or possessing.
PACIFIC COD, POLLOCK, HAKE, and WOLF-EEL	Year-round	CLOSED to retention.
SIXGILL, SEVENGILL, and THRESHER SHARKS	CLOSED	CLOSED to fishing for, retaining, or possessing. SIXGILL SHARK may not be removed from the water.
CABEZON	May 1-Nov. 30	Min. size 18". Daily limit 1.
<b>OTHER FOOD FISH</b>	Year-round	No min. size. Daily limit 2 of each species.
<b>ALL OTHER FISH</b>	CLOSED	CLOSED to fishing for, retaining, or possessing.

BOTTOMFISH

## Derelict Fishing Gear

Report lost or abandoned commercial nets or pots

There are no penalties associated with reporting lost commercial fishing gear.

The Derelict Fishing Gear Removal Project is a no-fault program. The goals are simply to remove lost and abandoned commercial gear, to help restore Puget Sound, to improve public safety, and to assist species recovery.

**Nets are dangerous! Never attempt to remove them. Divers, stay a safe distance away.**



### Still Fishing After All These Years

Lost and abandoned commercial fishing gear continues to fish, impacting marine animals and destroying their habitat, entangling divers, and damaging propellers and rudders of boats.

### What's being done?

Federal, state, tribal, and local governments, NGOs, and grassroots organizations and individuals are collaborating to protect and restore Washington marine resources by locating and removing harmful commercial derelict fishing gear.

### How can you help?

Record as much information as you can when you find commercial derelict gear, including:

- Date of sighting
- Type of gear
- Approximate water depth
- General location
- Latitude (example 48.34333)
- Longitude (example -123.00333)

### You can report this information to:

Initiative  
Washington Department of Fish and Wildlife  
(Toll Free) 855-542-3935 or go to  
<http://wdfw.wa.gov/fishing/derelict>

Northwest Straits Marine Conservative

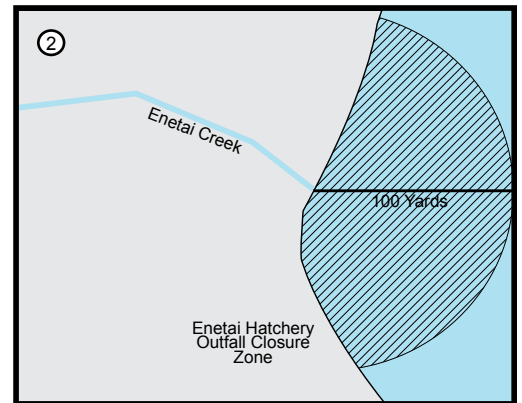
360-428-1084 or go to  
[www.derelictgear.org](http://www.derelictgear.org)



NORTHWEST STRAITS  
marine conservation initiative

Marine Areas

# Marine Area 12 Map



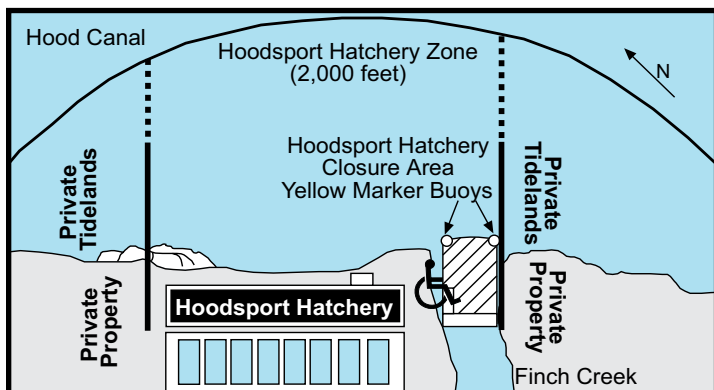
- ① **Sund Rock Conservation Area:** Waters, tidelands, and bedlands enclosed by a line originating at the shore of Hood Canal, at the mouth of Sund Creek (47°26.4'N, 123°7.1'W), then due east to 123°6.9'W, then due south to 47°26'N, then due west until it intersects the beach, then north along the ordinary high water line to the point of origin, including all of the underwater feature known as Sund Rock, CLOSED to all harvest, except tideland owners and their families may still harvest CLAMS, OYSTERS, and MUSSELS from their property.
- ② **Enetai Hatchery Outfall Closure:** Waters within 100 yards of the Enetai Hatchery outfall CLOSED year-round to fishing for Food Fish.
- ③ **Big Beef Closure:** Aug. 1-Nov. 30: waters within 100' of the Seabeck Hwy. NW Big Beef Creek Bridge CLOSED to fishing for Food Fish.
- ④ **West Dewatto (DNR Beach 44A):** On the southwest entrance to Dewatto Bay on the east shore of Hood Canal.
- ⑤ **Octopus Hole Conservation Area:** Waters, tidelands, and bedlands of Hood Canal from ordinary highwater to 200 yards due east in an area starting at latitude 47°26.67'N (the first bulkhead south of the sign for Octopus Hole) and extending north 1/3 of a mile to 47°27.02'N are CLOSED to harvest, except tideland owners and their families may still harvest CLAMS, OYSTERS, and MUSSELS from their property.
- ⑥ **Waketick Creek Conservation Area:** Waters and bedlands from Waketick Creek (located 1,000 yards NE of Cummings Pt.) out perpendicular to shore 500 yards, then parallel to shore northeast 1,700 yards, then back to shore along a line perpendicular to shore, excluding the area within 100' of ordinary high water - CLOSED to all harvest.
- ⑦ **Quilcene/Dabob Bay Salmon Fishery:** Waters north of a true east line from Point Whitney to the Toandos Peninsula. Same rules as Marine Area 12 - ENTIRE AREA, except Aug. 16-Oct. 15. See ⑧ below and Quilcene/Dabob Bay Fishery on next page for rules.
- ⑧ **Tarboo Bay Closure:** Waters north of Broad Spit (northern Dabob Bay) CLOSED to SALMON fishing Sept. 16-Dec. 31.

# Marine Area 12 - Hood Canal

(All waters south of the Hood Canal Bridge)

SPECIES	SEASON	ADDITIONAL RULES
SALMON South of Ayock Point	July 1-Oct. 15	CHINOOK - min. size 22". Other SALMON species - no min. size. Daily limit 4 (combined). Up to 2 CHINOOK may be retained. Release wild CHINOOK and CHUM.
	North of Ayock Point	Sept. 1-Oct. 15 No min. size. Daily limit 4 COHO only. <b>See Quilcene/Dabob Bay Fishery Area on previous page and Fishery below. See Tarboo Bay Closure on previous page.</b>
ENTIRE AREA	Oct. 16-Dec. 31	CHINOOK - min. size 22". Other SALMON species - no min. size. Daily limit 4 (combined). Up to 2 CHINOOK may be retained. Release wild CHINOOK. <b>See Tarboo Bay Closure on previous page.</b>
	Feb. 1-Apr. 30	CHINOOK - min. size 22". Other SALMON species - no min. size. Daily limit 2 (combined). Release wild CHINOOK.
Hoodsport Hatchery Zone (see below for boundaries)	July 1-Dec. 31	No min. size. Daily limit 4 (combined). Up to 2 CHINOOK 24" or longer may be retained. Release wild CHINOOK. Night closure. July 1-Oct. 15: release CHUM. <b>Please respect private property adjacent to hatchery (see map and description below).</b>
Quilcene/Dabob Bay Fishery (see ⑦ and ⑧ on previous page for boundaries)	Aug. 16-Oct. 15	No min. size. Daily limit 4 COHO only. <b>See Tarboo Bay Closure on previous page.</b>
TROUT	Year-round	Catch-and-release except up to 2 hatchery STEELHEAD may be retained.
STURGEON	Year-round	Catch-and-release.
MACKEREL	CLOSED	CLOSED to fishing for, retaining, or possessing.
HERRING, ANCHOVY, SARDINE, SAND LANCE, and SMELT	CLOSED	CLOSED to fishing for, retaining, or possessing.
PACIFIC HALIBUT	CLOSED	CLOSED to fishing for, retaining, or possessing.
<b>BOTTOMFISH</b>	CLOSED	CLOSED to fishing for, retaining, or possessing.
LINGCOD	CLOSED	CLOSED to fishing for, retaining, or possessing.
SURFPERCH	CLOSED	CLOSED to fishing for, retaining, or possessing.
ROCKFISH	CLOSED	CLOSED to fishing for, retaining, or possessing.
PACIFIC COD, POLLOCK, HAKE, and WOLF-EEL	CLOSED	CLOSED to fishing for, retaining, or possessing.
SIXGILL, SEVENGILL, and THRESHER SHARKS	CLOSED	Closed to fishing for, retaining, or possessing. SIXGILL SHARK may not be removed from the water.
CABEZON	CLOSED	CLOSED to fishing for, retaining, or possessing.
<b>OTHER FOOD FISH</b>	CLOSED	CLOSED to fishing for, retaining, or possessing.
<b>ALL OTHER FISH</b>	CLOSED	CLOSED to fishing for, retaining, or possessing.

BOTTOMFISH



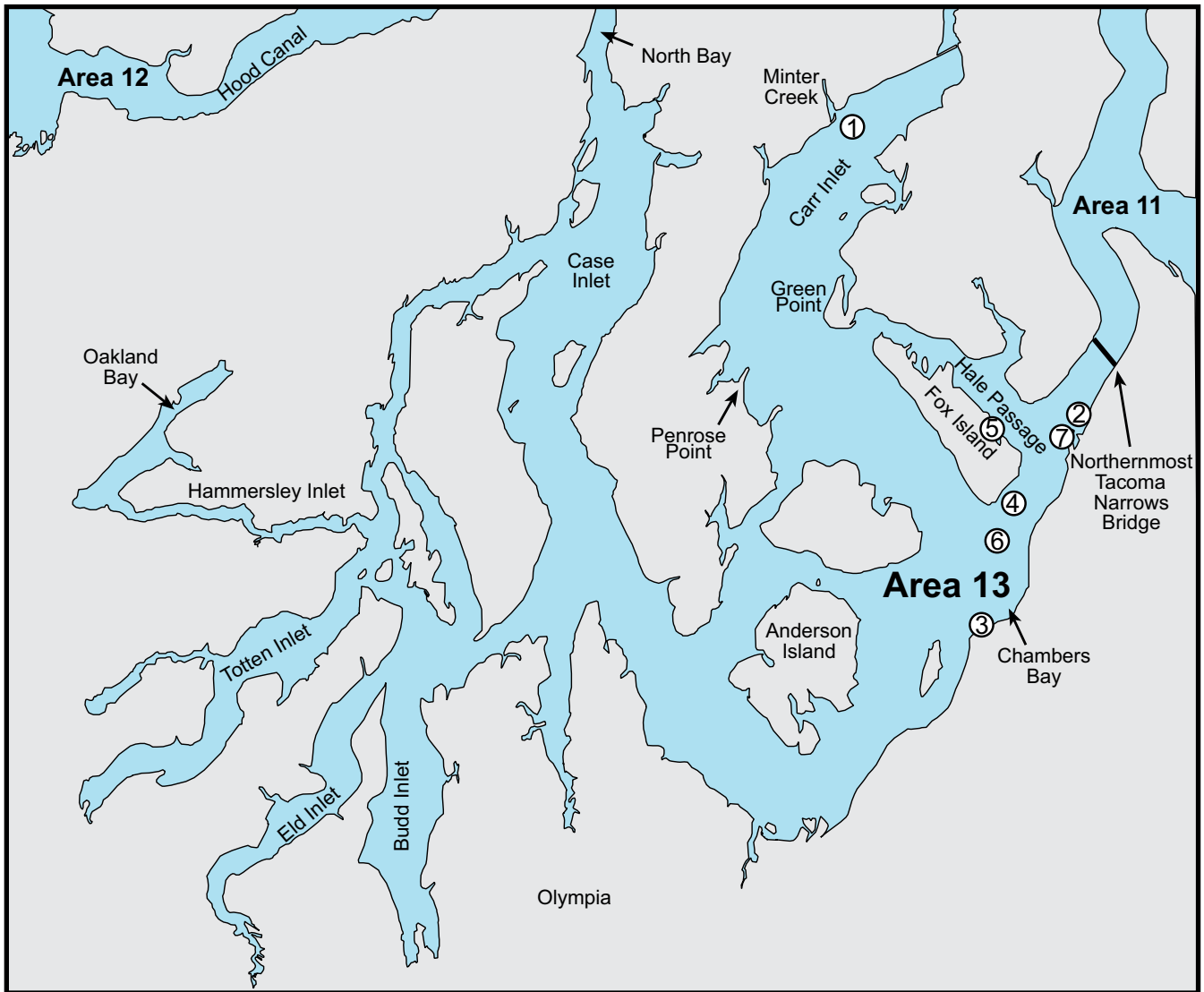
**Hoodsport Hatchery Zone:** Waters within a 2,000' arc seaward of the yellow marker buoys at the mouth of Finch Creek, Jan. 1-June 30: same rules as Area 12 - ENTIRE AREA; July 1-Dec. 31: see Hoodsport Hatchery Zone above for rules. **Visitors, please be aware that walking or wading onto private property or tidelands adjacent to the hatchery without permission is considered criminal trespass and will be enforced. Please stay within the state-owned tidelands in front of the hatchery complex. The north and south boundaries are clearly marked by signs and floating buoys for your benefit. Closure of these waters may occur if trespassing continues.**

**Hoodsport Hatchery Closure:** All waters between 2 yellow buoys at the mouth of Finch Creek and the hatchery weir (walkway); and all waters within the channel created by Finch Creek on exposed tidelands, and fishing from any part of the Hoodsport Hatchery structure, CLOSED to fishing year-round, except persons with disabilities who permanently use a wheelchair AND who have a designated harvester companion card may fish from the ADA-accessible site at the Hoodsport Salmon Hatchery, provided such persons follow all applicable rules and regulations of the adjoining waters of Marine Area 12.

**Hood Canal Shrimp District:** All waters of Hood Canal south of the Hood Canal floating bridge.

Marine Areas

# Marine Area 13 Map



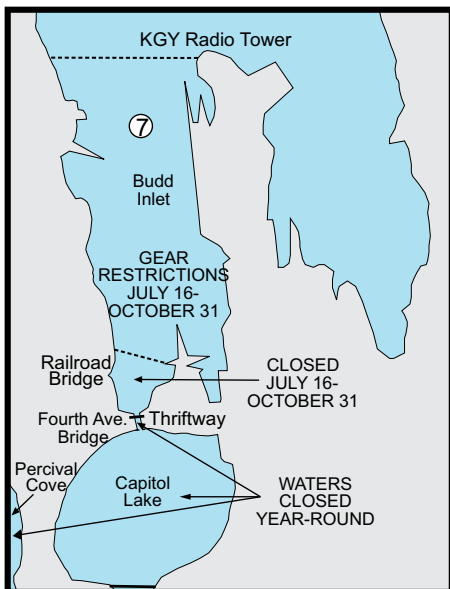
- ① **Minter Creek Closure:** Apr. 16-Sept. 30: waters at Minter Creek mouth within 1,000' of outer oyster stakes CLOSED to fishing for SALMON.
- ② **Titlow Beach Marine Preserve:** All waters due west from the southern end of the Tacoma Outboard Association building near the boat launch ramp to the outer harbor line, then south following the outer harbor line to a line due west from the old ferry landing dock at the 6th Ave. Extension, then following the line to the high water line, then to the point of origin, CLOSED to the harvesting of FISH, SHELLFISH, and WILDLIFE, except SALMON fishing, using lures only, is permitted from shore or non-motorized craft.
- ③ **Saltar's Point Conservation Area:** Tidelands owned by the town of Steilacoom at Saltar's Point Beach located between Montgomery Street and Martin Street, and the water column above these tidelands, CLOSED to all harvest.
- ④ **Fox Island Public Fishing Pier**
- ⑤ **Z's Reef Marine Preserve:** Waters and bedlands beginning at the extreme low water line on the northeast side of Fox Island at 47°14.56'N, 122°35.98'W, then 0.5 nautical mile westerly along the extreme low water line to 47°14.96'N, 122°36.37'W, then northeast to the 85' contour line, southeast along 85' contour, then southeast along the 85' depth contour to a point on a due northeast-southwest line through the point of origin, then southwest to the point of origin, CLOSED to all harvest, except for fly fishing for SALMON allowed.
- ⑥ **Toliva Shoal Closure:** June 16-Apr. 30: closed to fishing for fin fish in waters within 500 yards of the buoy on Toliva Shoal. May 1-June 15: same rules as Marine Area 13 - ENTIRE AREA.
- ⑦ **Days Island (Octopus Protection Area):** CLOSED to the harvest of OCTOPUS.

# Marine Area 13 - South Puget Sound

(All waters south of northernmost Tacoma Narrows Bridge)

SPECIES	SEASON	ADDITIONAL RULES
SALMON - ENTIRE AREA	May 1-June 30	CHINOOK - min. size 22". Other SALMON species - no min. size. Daily limit 2 (combined). Release wild CHINOOK. <b>See closures and marine preserves on previous page. Anglers may fish with two poles with Two-Pole Endorsement.</b>
	July 1-Oct. 31	CHINOOK - min. size 22". Other SALMON species - no min. size. Daily limit 2 (combined). Release wild CHINOOK and wild COHO. <b>See closures and marine preserves on previous page and below. Anglers may fish with two poles with Two-Pole Endorsement.</b>
	Nov. 1-Apr. 30	CHINOOK - min. size 22". Other SALMON species - no min. size. Daily limit 2 (combined). Release wild CHINOOK. <b>See closures and marine preserves on previous page. Anglers may fish with two poles with Two-Pole Endorsement.</b>
Fox Island Public Fishing Pier	Year-round	CHINOOK - min. size 22". Other SALMON species - no min. size. Daily limit 2 (combined). Only 1 CHINOOK may be retained.
TROUT	Year-round	Catch-and-release except up to 2 hatchery STEELHEAD may be retained.
STURGEON	Year-round	Catch-and-release.
MACKEREL	Year-round	No min. size. No daily limit.
HERRING, ANCHOVY, SARDINE, SAND LANCE, and SMELT*	Year-round	No min. size. Daily limit 10 lbs., all species combined. All SMELT caught must be kept and count toward the daily limit except <b>CLOSED</b> to Columbia River SMELT (eulachon). <b>For SMELT:</b> Jig gear may be used 7 days a week. Dipnets may be used 8:00 a.m. Fridays through 8:00 a.m. Wednesdays.
*Check the WDFW website at <a href="http://wdfw.wa.gov">wdfw.wa.gov</a> or call (360) 902-2700 for updates on SMELT. The Fish and Wildlife Commission is considering changes in June 2014.		
PACIFIC HALIBUT	CLOSED	CLOSED to fishing for, retaining, or possessing.
<b>BOTTOMFISH</b>	Year-round season. Daily limit is a total of 15 BOTTOMFISH (see definition page 10) regardless of species, subject to individual limits and seasons shown below. <b>See closures and marine preserves on previous page and below.</b> Fishing for BOTTOMFISH prohibited in waters deeper than 120 feet.	
LINGCOD	May 1-June 15 May 21-June 15	<b>Hook and line season.</b> Min. size 26". Max. size 36". Daily limit 1. <b>Spearfishing season.</b> Max. size 36". Daily limit 1.
SURFPERCH	Year-round	No min. size. Daily limit 10. Except SHINER PERCH daily limit 15: not included in BOTTOMFISH limit.
ROCKFISH	CLOSED	CLOSED to fishing for, retaining, or possessing.
PACIFIC COD, POLLOCK, HAKE, and WOLF-EEL	Year-round	CLOSED to retention.
SIXGILL, SEVENGILL, and THRESHER SHARKS	CLOSED	CLOSED to fishing for, retaining, or possessing. SIXGILL SHARK may not be removed from the water.
CABEZON	May 1-Nov. 30	Min. size 18". Daily limit 1.
<b>OTHER FOOD FISH</b>	Year-round	No min. size. Daily limit 2 of each species.
<b>ALL OTHER FISH</b>	CLOSED	CLOSED to fishing for, retaining, or possessing.

BOTTOMFISH



⑦ **Budd Inlet Closure:** waters of Budd Inlet at Olympia south of the Fourth Ave. Bridge are CLOSED to fishing year-round; July 16-Oct. 31: all contiguous waters between the Fourth Ave. Bridge and a line from the northwest corner of the Thriftway Market building to a point 100 yards north of the railroad bridge located on the western side of the inlet CLOSED to fishing for SALMON and BOTTOMFISH.

**July 16-Oct. 31:** night closure and anti-snagging rule in effect in waters of Budd Inlet south of a line projected true west from the KGY Radio Station Tower to the western shore of the inlet and north of a line from the northwest corner of the Thriftway Market building to a point 100 yards north of the railroad bridge located on the western side of the inlet.

**See Department of Health (DOH) Fish Consumption Advisories on page 20.**

## COASTAL CUTTHROAT TROUT - catch-and-release ONLY in all marine waters.

Body color is variable. Numerous closely grouped spots on dorsal fin and tail. The maxillary (upper jaw bone) usually extends beyond the back of the eye. May have a red or orange slash on the underside of the jaw.



Marine Areas

# Shellfish/Seaweed Rules

**New:** For current beach seasons check <http://wdfw.wa.gov/fishing/shellfish/beaches/>. Shellfish Rule Change Hotline (866) 880-5431 or contact the WDFW customer service desk (360) 902-2700 to verify seasons.

## 3 Steps to Safe and Legal Shellfish Harvest - It's your responsibility!

- 1 . . . . Know the Rules (You could get a ticket)**  
**Is the harvesting season open?** Read the rules for seasons, size, and bag limits. For beach seasons, check the website <http://wdfw.wa.gov/fishing/shellfish/beaches/>, the toll-free WDFW Shellfish Rule Change Hotline (866) 880-5431, or contact the WDFW customer service desk (360) 902-2700 to verify seasons.
- 2 . . . . Pollution Closures (You could get sick)**  
**Does the beach meet standards for healthy eating?** Some closures are shown on the map on page 128. For more pollution closures visit the Washington Department of Health website at [www.doh.wa.gov/shellfishsafety.htm](http://www.doh.wa.gov/shellfishsafety.htm), call (360) 236-3330 or the local county health department.
- 3 . . . . Marine Biotxin Closures and *Vibrio* Warnings (You could get sick or die)**  
**Is there an emergency closure due to Shellfish Poisoning (PSP/ASP/DSP) or *Vibrio* bacteria?** Check the DOH website at [www.doh.wa.gov/shellfishsafety.htm](http://www.doh.wa.gov/shellfishsafety.htm), call (360) 236-3330, or the Shellfish Safety toll-free Hotline at (800) 562-5632.

### Licenses

A Combination or a Shellfish/Seaweed License is required for all shellfish (except CRAWFISH) and SEAWEED harvest. A catch record card, and endorsement is required to fish for DUNGENESS CRAB in Puget Sound. (See License Requirements, page 6).

### Designated Harvesters

Persons with a disability must have a designated harvester companion card issued by WDFW if using another harvester to assist them with their catch. The person harvesting the catch on behalf of the licensee with a disability must be in possession of the designated harvester companion card while assisting the person with a disability. Both the digger and the person with a disability must be licensed. The licensee is also required to be in the direct line of sight of the designated harvester who is harvesting shellfish for them. If this is not possible, the licensee is required to be within 1/4 mile of the designated harvester who is harvesting shellfish for them.

### Tideland Ownership

Most Puget Sound, Hood Canal, Grays Harbor, and Willapa Bay beaches are privately owned. SHELLFISH and SEAWEED may not be taken from private beaches without the owner's or lessee's permission. Private tideland owners and lessees, and members of their immediate family (grandparents, parents, spouse, siblings, children, and grandchildren) are exempt from personal use daily limits when taking CLAMS, OYSTERS, and MUSSELS harvested for their own personal use from their own tidelands. Daily limits apply for all other shellfish, all other people, and all other beaches. Everyone harvesting shellfish in excess of the daily limit from private beaches for presumed commercial purposes needs a shellfish certification from the Department of Health (see RCW 69.30.010(8)).

For reporting tsunami debris, hazardous materials, and potential aquatic invasive species: <http://marinedebris.wa.gov/>

### Possession Limit

**One daily limit in fresh form. Additional shellfish may be possessed in frozen or processed form.**

### Shellfish Safety

**Eating contaminated shellfish or seaweed can cause serious illness or death.** The only way to be safe is to "Know Before You Dig." Check the Department of Health (DOH) website [www.doh.wa.gov/shellfishsafety.htm](http://www.doh.wa.gov/shellfishsafety.htm), or call the local health department. For shellfish safety closures call the Shellfish Safety Hotline at (800) 562-5632.

**Don't harvest in areas that are polluted. It can make you sick.** Pollution can come from many sources like sewage drain pipes, failing septic systems, farm practices, wildlife, and pet waste. Use sani-cans, vault toilets and other approved facilities. Scoop, bag and dispose of human and pet waste if no facilities are available.

**Don't harvest in areas with marine biotoxins (PSP/ASP/DSP) or *Vibrio* warnings. You could get sick or die.**

**PARALYTIC SHELLFISH POISONING (PSP) & AMNESIC SHELLFISH POISONING (ASP) & DIARRHETIC SHELLFISH POISONING (DSP):**

- Can make you sick or cause death
- Can't be destroyed by cooking or freezing
- Are produced by algae that usually can't be seen
- Do not turn water red like the old name suggests

**VIBRIO BACTERIA: In the summer, sea water often has high levels of naturally occurring bacteria.** Unlike biotoxins, these bacteria can be killed by cooking. To avoid getting sick, DOH advises that you COOK ALL SHELLFISH thoroughly.

For more information on PSP, ASP, DSP and *Vibrio* bacteria, visit the DOH website, call the main office at (360) 236-3330, or contact the local county health department.

For an interactive map listing health closures and advisories please visit: [www.doh.wa.gov/shellfishsafety.htm](http://www.doh.wa.gov/shellfishsafety.htm)

### Safe Handling Practices

- Water color does not indicate SHELLFISH safety.
- Rinse your catch in salt (not fresh) water before leaving the beach, quickly cool your catch on ice or in a refrigerator, and cook as soon as possible.
- Wash all SEAWEED before eating.
- Cook shellfish thoroughly before eating.
- Cooking, rinsing, or freezing **DOES NOT** destroy all pollutants. CRAB can also concentrate pollutants in their internal organs (crab butter). Clean CRAB before cooking. Eat only the meat.

### Marine Preserves, Conservation & Octopus Protection Areas

**For all Shellfish Species, see Marine Area maps (pages 101-124) for closures:**  
**AREA 7:** San Juan Islands Marine Preserve.  
**AREA 9:** Edmonds Public Fishing Pier, Brackett's Landing Shoreline Sanctuary, Keystone Conservation Area, and Admiralty Head Marine Preserve.  
**AREA 10:** Elliott Bay Public Fishing Pier, Orchard Rocks Conservation Area, Carkeek Park, Golden Gardens, Discovery Park, Richey Viewpoint, Emma Schmitz Memorial, Lincoln Park, and Eagle Harbor  
**AREA 11:** Des Moines Fishing Pier, Les Davis Fishing Pier, Colvos Passage Marine Preserve, City of Des Moines Park, and South 239th Street Park, and Saltwater State Park Marine Preserve  
**AREA 12:** Sund Rock Conservation Area, Waketickeh Creek Conservation Area, and Octopus Hole Conservation Area.  
**AREA 13:** Salter's Point Conservation Area, Titlow Beach Marine Preserve, and Z's Reef Marine Preserve

**For OCTOPUS Protection Areas, see Marine Area maps (pages 112-124) for closures:**  
**AREA 8-1:** Deception Pass  
**AREA 10:** Alki Beach Junk Yard, and Seacrest Park Coves 1, 2, and 3.  
**AREA 11:** Three Tree Point, Redondo Beach, and Les Davis.  
**AREA 13:** Days Island.

# Public Beach Season Information

Two different state agencies are responsible for two different types of recreational shellfish harvest closures. The Washington Department of Fish and Wildlife (WDFW) is responsible for conservation closures or season adjustments. These closures are designed to protect and conserve intertidal shellfish populations. The Washington Department of Health (DOH) is responsible for human health-related closures in response to potentially life-threatening environmental conditions, which result from PSP/ASP/DSP, *Vibrio* bacteria or pollution, as described in the Shellfish Safety section on the previous page. Some, but not all, of these beaches are also closed by WDFW. Permanent WDFW/DOH closures and periodic DOH harvest advisories are shown on the next page.

DOH SEASON	WDFW SEASON	HARVEST STATUS	REASON
Open	Open	SAFE & LEGAL	
Open	Closed	ILLEGAL	Conservation closure or season adjustment
Closed	Open	NOT SAFE	Potentially life-threatening environmental conditions
Closed	Closed	NOT SAFE & ILLEGAL	

Not all beaches have been evaluated by DOH, so if you have any concerns call the local health department or DOH at (360) 236-3330 or (800) 562-5632. In addition, some beaches may be posted with warning signs - look for signs as you access the beach.

**ALWAYS CHECK BOTH THE CURRENT WDFW SEASON AND THE DOH HEALTH CLOSURE STATUS BEFORE HARVESTING ANY PUBLIC BEACH.**

For beach locations and seasons, check the WDFW website at <http://wdfw.wa.gov/fishing/shellfish/beaches/>. The website includes interactive beach maps providing information about access, available species, harvest tips, driving directions, facility descriptions and links to the DOH Shellfish Safety webpages. Also, check the Marine Preserves and Conservation Closures on the previous page before planning your trip.

**New:** For current beach seasons check <http://wdfw.wa.gov/fishing/shellfish/beaches/>, Shellfish Rule Change Hotline (866) 880-5431 or contact the WDFW customer service desk (360) 902-2700 to verify seasons.

**RAZOR CLAM** seasons occur only after clam samples have been tested by Washington Department of Health (DOH) and are found to be safe for human consumption.

## Intertidal Shellfish Enhancement Program

WDFW's shellfish program has planted several public beaches with OYSTERS, CLAMS, and GEODUCKS. Some beaches have increased harvest opportunity as a result of WDFW's enhancement activities. If a beach is open for CLAMS, MUSSELS, or OYSTERS, harvest is encouraged on these beaches.

- |                                       |                                       |   |
|---------------------------------------|---------------------------------------|---|
| Blake Island State Park - Geoducks    | Oak Bay County Park - Clams           | Shine Tidelands State Park - Clams/Geoducks |
| DNR 24 - Oysters                      | Penrose State Park - Clams/Oysters    | South Indian Island County Park - Clams     |
| DNR 44A West Dewatto - Clams/Oysters  | Point Whitney Lagoon - Clams          | Triton Cove Tidelands - Clams               |
| Frye Cove County Park - Clams/Oysters | Point Whitney Tidelands - Clams       | Twanoh State Park - Clams                   |
| Illahee State Park - Oysters          | Potlatch State Park - Oysters         | West Penn Cove - Oysters                    |
| Kopachuck State Park - Oysters        | Quilcene Bay WDFW Tidelands - Oysters | Wolfe Property State Park - Clams/Oysters   |
| Mystery Bay State Park - Oysters      | Sequim Bay State Park - Clams/Oysters |   |



## Shellfish Are GOOD For You!

\*Protein-rich \*Low-fat \*Essential minerals

BUT... when gathering your own, remember the 3 C's of safe shellfish harvest:

Check - Chill - Cook!



### Check for:

- Health closures and advisories (biotoxin, pollution, Vibrio) [www.doh.wa.gov/ShellfishSafety.htm](http://www.doh.wa.gov/ShellfishSafety.htm)
- Harvesting closures (seasons, limits) [wdfw.wa.gov/fishing/shellfish](http://wdfw.wa.gov/fishing/shellfish)
- Signs on the beach: Follow posted warnings and closures, and respect private property



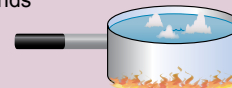
### Chill shellfish – it's important!

- Harvest shellfish on the outgoing tide
- Put them on ice as soon as possible to prevent bacterial growth
- Keep them cold until they're ready to eat



### Cook shellfish in summer

- Vibrio illnesses occur during summer months
- To kill Vibrio bacteria cook shellfish to 145° F for at least 15 seconds

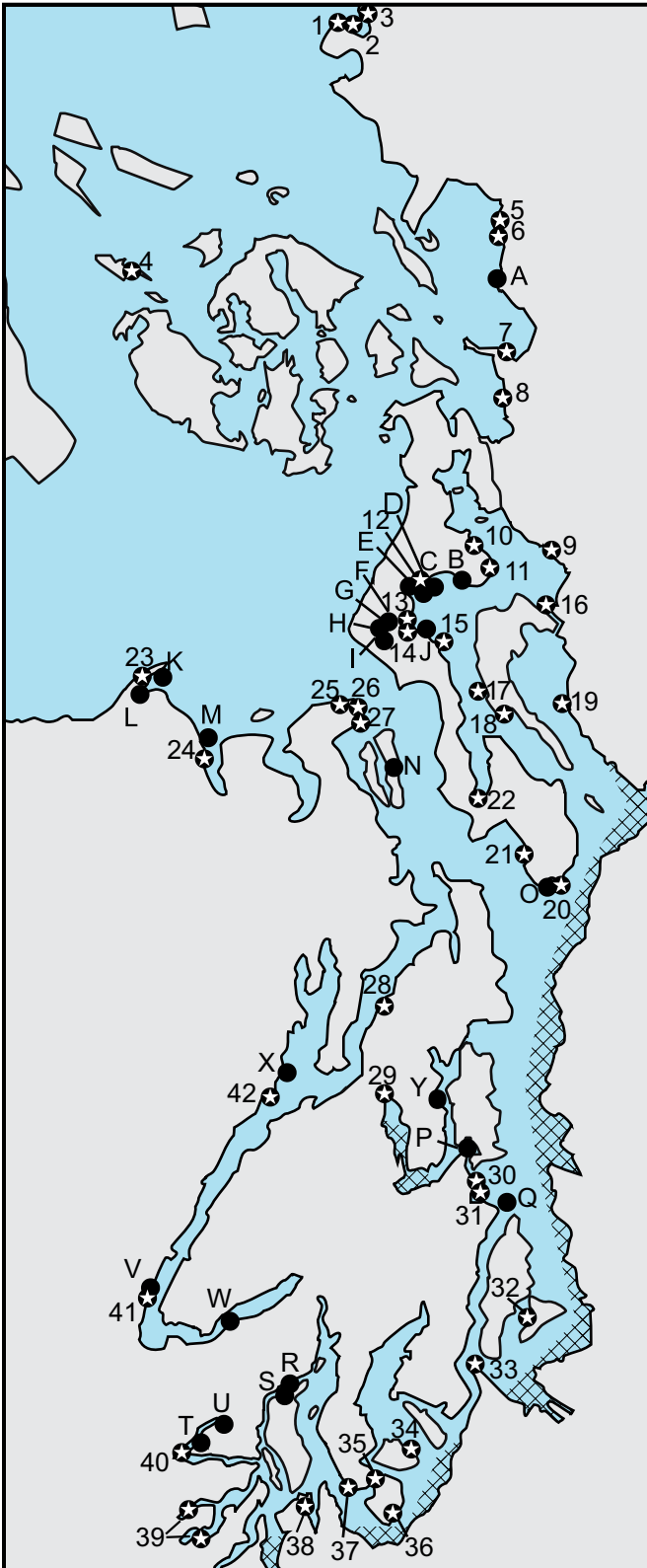


Ask your doctor before eating raw shellfish if you have any concerns about allergies, are taking medications, or have a weakened immune system (such as cancer, liver disease, or HIV). Shellfish are great and healthy food. Avoid illness – follow the 3 C's.



# Health Restrictions - Clams, Oysters, and Mussels

Before harvesting shellfish check the Department of Health toll-free Shellfish Safety hotline, (800) 562-5632, or (360) 236-3330 in the Olympia area, or on the Internet, [www.doh.wa.gov/shellfishsafety.htm](http://www.doh.wa.gov/shellfishsafety.htm). If you need further assistance, contact the county health department. County health department phone numbers are published in the government pages of local telephone directories. For harvestable beach locations and seasons, check the WDFW website at <http://wdfw.wa.gov/fishing/shellfish/beaches/>



**These areas and all beaches in the following list are CLOSED year-round by the Department of Health (DOH) and/or the Department of Fish and Wildlife (WDFW) for health or conservation reasons:**

- On the Strait of Juan de Fuca - Port Angeles Harbor and Port Angeles Coast Guard.
- All beaches within the (cross-hatched) areas.
- All beaches around ferry docks.
- All beaches below indicated by this symbol on the map:

- |                             |   |
|-----------------------------|---|
| 1 Semiahmoo County Park     | 23 Graveyard Spit                           |
| 2 Semiahmoo Marina          | 24 Pitship Point                            |
| 3 Semiahmoo                 | 25 North Beach County Park                  |
| 4 Reid Harbor - South Beach | 26 South Point Wilson                       |
| 5 Post Point                | 27 North Point Hudson                       |
| 6 Chuckanut Bay (Mud Bay)   | 28 Bangor                                   |
| 7 Samish Beach              | 29 Silverdale Waterfront Park               |
| 8 Bay View State Park       | 30 Manchester State Park                    |
| 9 Skagit Wildlife Area      | 31 Little Clam Bay                          |
| 10 DNR-144 (Sleeper)        | 32 Dockton County Park                      |
| 11 DNR-142                  | 33 Point Defiance                           |
| 12 Oak Harbor City Park     | 34 McNeil Island/Gertrude Island            |
| 13 Monroe Landing           | 35 Pitt Island                              |
| 14 Coupeville               | 36 South Oro Bay                            |
| 15 Harrington Beach         | 37 Taylor Bay                               |
| 16 West Pass Access         | 38 Woodard Bay                              |
| 17 Cama Beach State Park    | 39 Oyster Reserves of Totten and Eld Inlets |
| 18 Camano Island State Park | 40 Walker County Park                       |
| 19 Kayak Point County Park  | 41 Hoodsport                                |
| 20 Northeast Cultus Bay     | 42 Pleasant Harbor State Park               |
| 21 Dave Mackie County Park  |   |
| 22 Freeland County Park     |   |

**The Department of Health (DOH) has harvest advisories on the following beaches, as indicated by this symbol:**

An advisory is placed on beaches that MAY be subject to periodic contamination from pollution sources or MAY intersect polluted areas. Check the DOH website for details, or contact the county health department prior to harvesting these beaches.

- A. Larrabee State Park (north end)
- B. WINAS Crescent Harbor
- C. WINAS-Maylor Point - E (north end)
- D. Blowers Bluff
- E. WINAS-Maylor Pt - W (inside Oak Harbor)
- F. East San de Fuca
- G. San de Fuca
- H. West Penn Cove (N Penn Cove)
- I. Madrona (Penn Cove)
- J. Long Point
- K. Dungeness National Wildlife Refuge
- L. Cline Spit
- M. DNR-411A
- N. Mystery Bay State Park
- O. Scatchet Head
- P. Point White
- Q. Blake Island State Park (east side)
- R. DNR-34
- S. Jarrell Cove
- T. Northeast Chapman Cove
- U. Oakland Bay
- V. North Hoodsport Hatchery
- W. Twanoh State Park
- X. Dosewallips State Park
- Y. Brownsville

# Razor Clam Rules

AREA	SPECIES	SEASON	ADDITIONAL RULES
------	---------	--------	------------------

**RAZOR CLAMS** (*Siliqua patula*) Grows to 6"; fragile, thin elongated shells are covered with shiny, tan lacquer-like skin coating the shell. Found only on Pacific coastal beaches. **Razor clam seasons occur only after clam samples have been tested by Washington Department of Health (DOH) and are found to be safe for human consumption.**

COASTAL BEACHES	RAZOR CLAMS	TO BE ANNOUNCED	No min. size. Daily limit first 15 dug regardless of size or condition. Each limit must be in a separate container.
-----------------	-------------	-----------------	---

- May only be taken by hand, hand-operated shovel, or tube with a minimum outside diameter of 4" (4" x 3" if elliptical).
- All clams dug are part of digger's limit - you may not return any razor clams to the beach or water.
- It is illegal to drive any vehicle or to lead or ride a horse on razor clam beds (westerly of a line 150' waterward of the extreme upper limit of the hard sand area). Pressure from weight of vehicles and digging action of horses' hooves cause clam mortality.
- The person with a disability for whom razor clams are being dug must be in line of sight of the designated harvester or within ¼ mile of the digging site. Both the digger and the person with a disability must be licensed. The person with a disability must have a designated harvester companion card. The designated harvester must have the designated harvester companion card in their possession while assisting the person with a disability. (See page 7).

### OCEAN RAZOR CLAM BEACH DESCRIPTIONS

**Long Beach:** Columbia River north jetty to Leadbetter Point (includes Seaview, Cranberry, Klipsan, Ocean Park, and Oysterville).

**Twin Harbors:** Northern shore of Willapa Bay (from Toke Point west, not including the beaches within the Shoalwater Bay Indian Reservation) to the Grays Harbor south jetty (includes North Cove, Grayland, and Westport).

**Copalis:** Grays Harbor north jetty to the Copalis River (includes Ocean Shores, Oyhut, Ocean City, and Copalis).

**Mocrocks:** Copalis River to the southern boundary of the Quinault Indian Nation (includes Iron Springs, Roosevelt, Pacific Beach, and Moclips).

**Kalaloch:** Olympic National Park South Beach Campground to Brown's Point (just south of Olympic National Park Beach Trail #3).

### PERMANENT RAZOR CLAM RESERVE CLOSURES

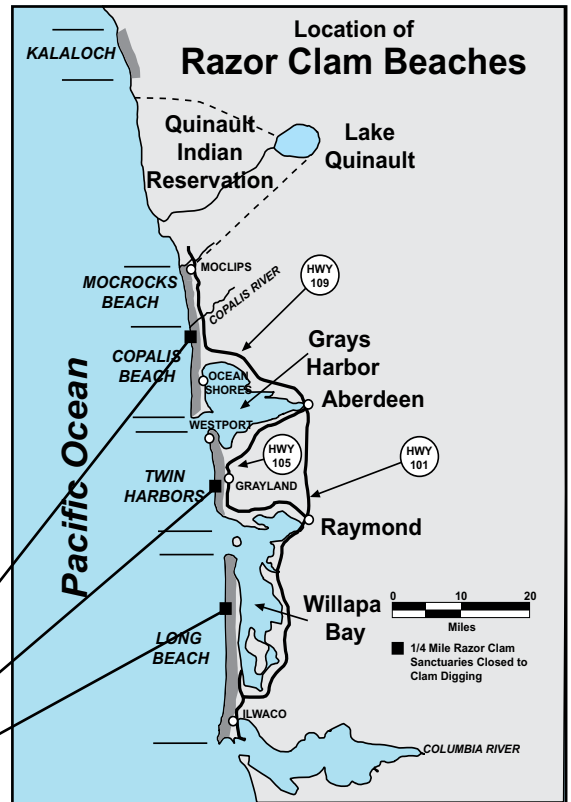
(Areas marked with posts and signs)

Razor clam sanctuaries (Reserves) are ¼ mile sections of coastal ocean beaches located on three beach areas that are used to assist in the management of the razor clam resource. The three areas are marked with metal posts and are signed to designate a "no digging" area. The three areas are:

**Copalis Beach** - from a point 0.4 miles south of the Ocean City approach (2nd Ave.) and extending south for ¼ mile.

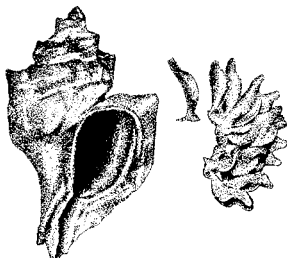
**Twin Harbors Reserve** - from the middle of the County Line Rd. approach south for ¼ mile.

**Long Beach Reserve** - beginning 2.7 miles north of the Oysterville approach and extending north for ¼ mile.



## Examples of Unclassified Marine Invertebrates

An unclassified marine invertebrate is any shellfish species not defined as shellfish on page 11. Examples include: shore crabs, graceful crabs, sea stars, sand dollars, moon snails, shore snails, marine worms and nudibranchs. **NO HARVEST ALLOWED.**

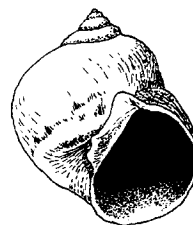


**Oyster Drill Snail and Egg Case**

The shell is about 1½" with ornate ridges commonly attached to clam and oyster shells. Egg cases are yellow to reddish. A voracious predator of marine bivalves. It is unlawful to transfer Japanese oyster drills from one beach to another. (WAC 220-72-011 and WAC 220-72-015)



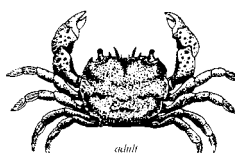
**Sea Star**



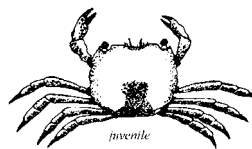
**Moon Snail**



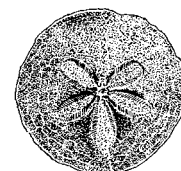
**Pacific Graceful Crab**



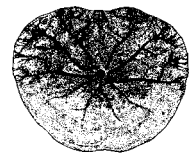
**Shore Crab**



juvenile



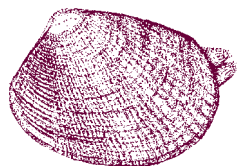
**Sand Dollar**



# Shellfish/Seaweed Species Rules

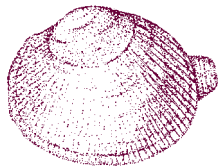
AREA	SPECIES	SEASON	ADDITIONAL RULES
<b>ABALONE</b>			
ALL AREAS	PINTO	CLOSED	Surveys show a continued decline in numbers of all size abalone. The closure is necessary to allow recovery of stocks.
<b>CLAMS, OTHER THAN RAZOR CLAMS</b> Caution: for Shellfish Safety and Department of Health contact information see pages 126 and 128. Clams can be dug by hand or hand-operated fork, pick, rake, or shovel. Each digger must use a separate container. Digging equipment may be shared. Clam holes must be refilled. To reduce clam mortality, please push any undersized clams into the refilled hole.			
PUBLIC BEACHES	GEODUCKS	See page 127 for season information	No min. size. Daily limit first 3 dug. It is unlawful to thrust any instrument through the neck of a geoduck. It is unlawful to possess only the neck of a geoduck.
	HORSE CLAMS	↓	No min. size. Daily limit first 7 dug regardless of condition.
	ALL OTHER SPECIES (Listed below)		Daily limit no more than 40 clams, not to exceed 10 lbs. in the shell, all species combined (excluding HORSE CLAMS and GEODUCKS). For species with a minimum size, measure across longest distance of shell.
	NATIVE LITTLENECKS		Min. size 1½".
	MANILAS		Min. size 1½".
	BUTTERS		Min. size 1½".
	COCKLES		Min. size 1½".
	EASTERN SOFTSHELLS		No min. size. Must be retained regardless of size or condition.
	ALL OTHER MARINE CLAMS		No min. size.
	Willapa Bay bonus limit: 24 COCKLES in addition to the regular CLAM limit.		
ALL FRESH WATER AREAS	ALL SPECIES	CLOSED	

Manilas, native littlenecks, cockles, and butter clams have a 1½" minimum size limit, except Quilcene Bay WDFW Tidelands (1¼" minimum size)



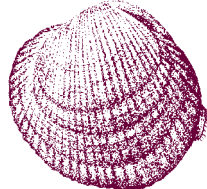
**Manila littleneck clam**  
*Venerupis philippinarum*

Average size is 1-2", up to 2½". Oblong shell has concentric and radiating lines. Siphon tips are split. Found to 4" below surface.



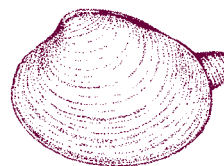
**Native littleneck clam**  
*Leukoma staminea*

Average size is 1-2", up to 2½". Rounded shell has concentric and radiating lines. Siphon tips are fused. Found 6-10" below surface.



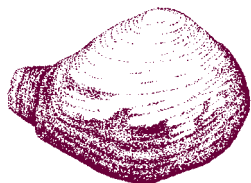
**Cockle clam**  
*Clinocardium nuttallii*

Prominent, evenly-spaced ridges which fan out from the hinge. Mottled, light brown. Can grow to 5". Found just below surface.



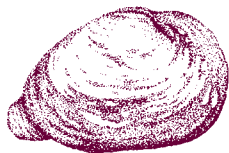
**Butter clam**  
*Saxidomus giganteus*

Average size is 3-4", up to 6". Shells have no radiating ridges and are usually chalky-white. The siphon can be pulled into its shell. Usually found 12-18" below surface.



**Horse clam**  
*Tresus capax* (shown)  
*Tresus nuttallii* (not shown)

Large, can grow up to 8". Shell is chalky-white with yellow-brown patches of "skin". The siphon can't be pulled into shell and has a leather-like flap on the tip. Found 1-2 feet below surface.



**(Eastern) Softshell clam**  
*Mya arenaria*

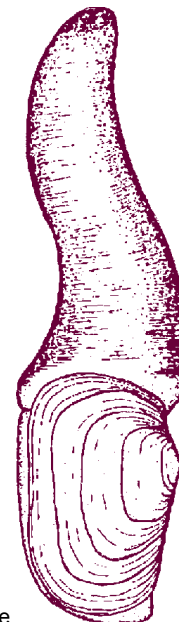
Can grow to 6". Shells are soft, chalky-white with a rough irregular surface. Shell is rounded at the foot end, pointed at the siphon end. Siphon doesn't have leather-like flap on the tip. Found to 18" below surface.



**Varnish clam**  
*Nuttallia obscurata*

Up to 3", with shiny brown coating on the outside, purple on the inside of shell.

Varnish Clams have the ability to retain biotoxins at higher levels and longer than other clams. Always check the biotoxin hotline before harvesting. **1-800-562-5632** or [www.doh.wa.gov/shellfishsafety.htm](http://www.doh.wa.gov/shellfishsafety.htm)



**Geoduck clam**  
*Panopea generosa*

Heavy, oblong shell, rounded at one end. Appears cut-off at the other. The siphon can't be pulled into the shell. Found 2-3 feet below surface. Can weigh up to 10 lbs.

# Shellfish/Seaweed Species Rules

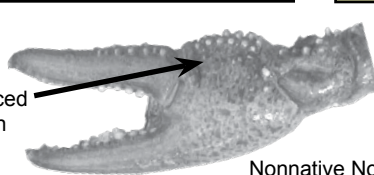
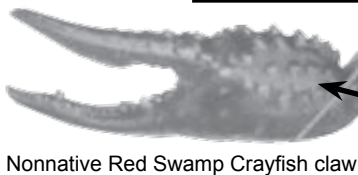
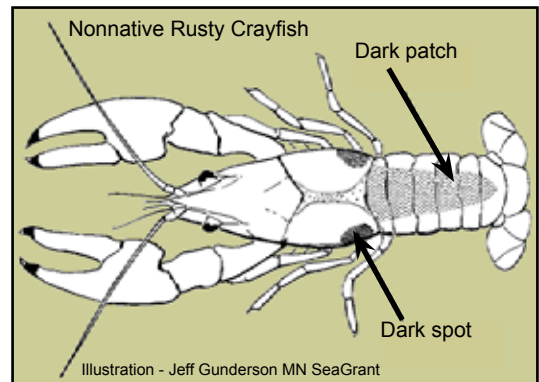
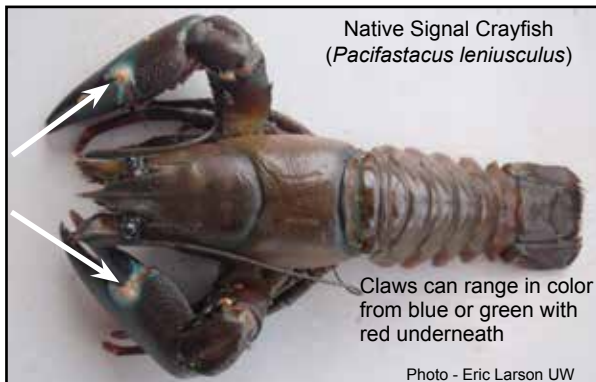
AREA	SPECIES	SEASON	ADDITIONAL RULES
------	---------	--------	------------------

**CRAB** See page 133 for crab harvest and 136 for crab gear rules.

## CRAYFISH (Crawfish)

ALL WATERS	NATIVE SPECIES	1 <sup>st</sup> Mon. in May-Oct. 31	Min. size 3/4" from tip of rostrum (nose) to tip of tail. Daily limit 10 lbs in shell. All females with eggs or young attached must be immediately returned to the water unharmed. No Shellfish/Seaweed license is required. See gear rules on page 136.
	NONNATIVE SPECIES	1 <sup>st</sup> Mon. in May-Oct. 31	Must be kept in a separate container. Must be dead before being removed from riparian area (immediate vicinity of water body). No daily limit, size, or sex restrictions. No Shellfish/Seaweed license is required. See gear rules page 136.

There is only one native crayfish species in Washington – the signal crayfish (*Pacifastacus leniusculus*). This species can be identified by its uniform brownish coloration, white or light coloration of the claw joint, and the smooth surface of its carapace and claws compared to that of nonnative species. **Native crayfish are the only crayfish that may be removed from the vicinity of the waterbody alive.** If you cannot positively identify your catch as a nonnative species, the daily limit and other restrictions listed above for native crayfish apply.



**How to humanely kill and preserve crayfish**  
There are two important steps to killing a crayfish quickly and humanely. The first is to chill them in ice or ice slurry for 20-30 minutes, and the second is to pierce their head with a knife.

Claw Photos - Julian Olden

## GOOSE BARNACLES **Caution: for Shellfish Safety and Department of Health contact information see pages 126 and 128.**

PUGET SOUND PUBLIC BEACHES		Year-round	No min. size. Daily limit 10 lbs. whole or 5 lbs. barnacle stalks.
PACIFIC OCEAN BEACHES (outside Olympic National Park)		Nov. 1-Mar. 31	No min. size. Daily limit 10 lbs. whole or 5 lbs. barnacle stalks.

## MUSSELS **Same Seasons as CLAMS. Caution: for Shellfish Safety and Department of Health contact information see pages 126 and 128.**

PUGET SOUND PUBLIC BEACHES	ALL SPECIES	See page 127 for season information	No min. size. Daily limit 10 lbs. in shell.
PACIFIC OCEAN BEACHES (outside Olympic National Park)	ALL SPECIES	Nov. 1-Mar. 31	No min. size. Daily limit 10 lbs. in shell.
ALL FRESH WATER AREAS	ALL SPECIES	CLOSED	

## OCTOPUS **Must be caught with hands or instrument which does not penetrate the OCTOPUS, except that octopus taken while angling with hook and line may be retained.**

ALL WATERS <b>except</b> MARINE AREA 12, marine preserves, conservation areas, and octopus protected areas	GIANT PACIFIC	Year-round	No min. size. Daily limit 1. NO CHEMICALS OR IRRITANTS ALLOWED.
MARINE AREA 12, marine preserves, conservation areas, and octopus protected areas	ALL SPECIES	CLOSED	See Marine Preserves, Conservation & Octopus Protected Areas page 126.

Shellfish/Seaweed

# Shellfish/Seaweed Species Rules

AREA	SPECIES	SEASON	ADDITIONAL RULES
<b>OYSTERS</b> Caution: for Shellfish Safety and Department of Health contact information see pages 126 and 128. OYSTERS may only be harvested by hand or with a hand-held manually operated prying tool (no hammers, etc.). Each harvester must use a separate container.			
PUBLIC BEACHES	ALL SPECIES	See page 127 for season information	Min. size 2½" measured across longest distance of shell. Daily limit 18. OYSTERS must be shucked on the beach. OYSTERS consumed on the beach count toward a limit. Leave shells on the same tideland and tide height where they were taken.
<b>RELIC SHELLS</b>			
ALL AREAS	ALL SPECIES	Year-round All beaches	Daily limit is 5 pounds of all species combined. Excludes OYSTER shells. Removal of shells on State Park beaches prohibited.
<b>SAND SHRIMP</b>			
PUBLIC BEACHES	ALL SPECIES	Year-round	No min. size. Daily limit 10 dozen. May be harvested only by hand or by hand-operated suction devices only.
<b>SCALLOPS</b> Department of Health Warning: Scallops may retain elevated levels of marine biotoxins. Before harvesting scallops check the Department of Health toll-free Shellfish Safety hotline, (800) 562-5632 or on the Internet, <a href="http://www.doh.wa.gov/shellfishsafety.htm">www.doh.wa.gov/shellfishsafety.htm</a> .			
ALL WATERS	PINK AND SPINY	Year-round	No min. size. Daily limit 5 qts. or 10 lbs. in shell combined limit for both species. May be harvested only by hand or with a hand-held manually operated prying tool.
	WEATHERVANE	Year-round	Min. size 4". Daily limit 12. Measure across longest distance of the shell.
	ROCK	Year-round	No min. size. Daily limit 6. Hammers or mallets may not be used to harvest rock scallops.
<b>SEA CUCUMBERS</b> Caution: for Shellfish Safety and Department of Health contact information see pages 126 and 128.			
ALL WATERS except MARINE AREA 12	CALIFORNIA	Year-round	No min. size. Daily limit 25. All other SEA CUCUMBERS species are unclassified marine invertebrates. See rules for unclassified marine invertebrates (below).
MARINE AREA 12	ALL SPECIES	CLOSED	
<b>SEA URCHINS</b>			
ALL WATERS	GREEN	Year-round	No min. size. Daily limit 36.
	PURPLE	Year-round	No min. size. Daily limit 18.
	RED	Year-round	No min. size. Daily limit 18.
<b>SEAWEED</b> (Many county and city parks have additional rules or closures. Please check local regulations before harvesting).			
ALL AREAS	ALL SPECIES	Year-round	Daily limit 10 lbs. wet weight. Illegal to harvest any SEAWEED if herring eggs are attached.
All State Park beaches are closed to SEAWEED harvest except Fort Flagler, Fort Ebey, and Fort Worden State Parks, which are open to SEAWEED harvest from April 16-May 15 only. SEAWEED harvesting in State Parks is limited to posted park hours and special State Park rules below:			
* Bull kelp must be cut a minimum of 24" above the bulb and short stemmed kelps must be cut a minimum of 12" above the anchor point. The anchor point must be left in place at all times.			
* Only a knife or similar instrument may be used to harvest SEAWEED. Tearing the plant and use of tined instruments such as rakes or forks is prohibited.			
* Each harvester must use their own container. Multiple limits may not be combined in the same container.			
* Each harvester must use a scale to determine when the harvest limit has been reached. <b>Drying or partial drying prior to weighing is prohibited.</b>			
<b>SHRIMP</b> See pages 134-136 for shrimp harvest and gear rules.			
<b>SQUID</b>			
ALL WATERS except MARINE AREA 12	ALL SPECIES	Year-round	No min. size. Daily limit 5 qts. or 10 lbs., plus up to 5 HUMBOLDT SQUID. Legal gear is a forage fish jig, a maximum of 4 squid lures, forage fish dip net, or a hand dip net. Each harvester must have a separate container.
MARINE AREA 12	ALL SPECIES	CLOSED	
<b>UNCLASSIFIED MARINE INVERTEBRATES</b>			
ALL AREAS	ALL SPECIES	CLOSED	See definition page 11 and additional information on page 129.

## ABALONE CAN NOT BE LEGALLY HARVESTED

The fishery for pinto (aka northern) abalone has been closed since 1994 in order to reverse population declines. Even with the closure, populations have continued to collapse. Between 1992 and early 2013, abalone populations have fallen by as much as 92%. Efforts are underway to restore this important species and in order for restoration to succeed, we must protect all remaining wild abalone. A suite of partners has created a hatchery program to raise and outplant juvenile abalone, but this program relies on wild abalone as parents for hatchery production. Wild abalone, particularly those found in small groups or aggregations, are critical for natural spawning and recovery. Abalone are sensitive to any physical disturbance. If you see one, please do not disturb it. Pinto abalone are listed as a *State Candidate Species*, a *State Species of Greatest Conservation Need* and a federal *Species of Concern*.

**EVERY INDIVIDUAL IS NEEDED FOR THE FUTURE OF THIS SPECIES**

**HELP US TO RESTORE ABALONE FOR GENERATIONS TO COME!**

**Learn more: [HTTP://PINTOABALONE.ORG](http://PINTOABALONE.ORG)**

**Anonymously report poaching: 1-877-933-9847 (Washington); 1-800-465-4336 (B.C.)**



# Crab Rules

**CRAB:** When harvesting Dungeness Crab in Puget Sound only, a catch record card (CRC) and a crab endorsement are required. Any harvest after Labor Day must be recorded on a winter CRC. Refer to CRC rules on page 8. A \$10.00 penalty will be added to the cost of your next Puget Sound crab endorsement if you fail to either return your cards by mail or report your catch information on the Internet (<https://fishhunt.dfw.wa.gov/wa/crabreport>) by the deadline printed on each card. Must release all softshell crab (underside of shell flexes with finger pressure - see below). Fishing instruments must not penetrate the shell. It is unlawful to possess crab in the field without retaining the back shell. May not retain Puget Sound KING CRAB, BOX CRAB, or PACIFIC GRACEFUL CRAB.

## Dungeness and Red Rock Crab Daily Limits and Rules:

**Puget Sound** has a daily limit of 5 Dungeness Crab, 6¼" minimum size, males only, and in hardshell condition.

**Columbia River** has a daily limit of 12 Dungeness Crab, 5¾" minimum size, males only, and in hardshell condition.

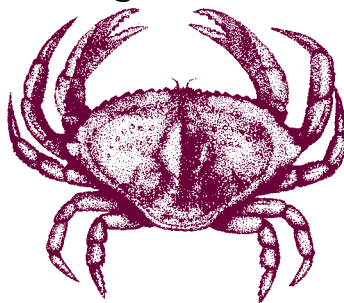
**Pacific Ocean** has a daily limit of 6 Dungeness Crab, 6" minimum size, males only, and in hardshell condition.

**All Areas** have a daily limit of 6 Red Rock Crab, 5" minimum size, of either sex.

Prior to harvesting, see additional crab gear rules on page 136, check the Shellfish Rule Change toll-free Hotline, (866) 880-5431, or visit <http://wdfw.wa.gov> for season openings, closures, and restrictions.

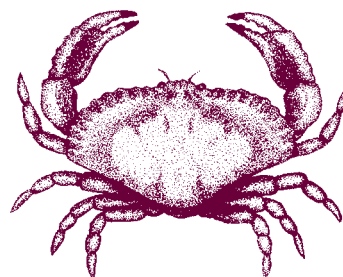
AREA	SPECIES	SEASON / OPENING DAYS AND TIMES / ADDITIONAL RULES
<b>PUGET SOUND</b> Marine Areas 4 (east of the Bonilla-Tatoosh line), 5, 6, 7 South, 7 North, 8-1, 8-2, 9, 10, 11, 12, and 13  Marine Areas 7 South and 7 North (See map next page)	<b>DUNGENESS and RED ROCK Crab</b>	For 2014 crab seasons go to: <a href="http://wdfw.wa.gov/fishing/shellfish/crab/">http://wdfw.wa.gov/fishing/shellfish/crab/</a> or refer to the toll-free shellfish rule change hotline (866) 880-5431. The season dates will be announced and available prior to June 1 for the summer season, and October 1 for the winter season.  <i>All DUNGENESS crab kept must be immediately recorded on a catch record card in ink (see page 8).</i>
<b>COLUMBIA RIVER</b> East of a line from exposed end of north and south jetty upstream to a line between Tongue Point and Rocky Point	<b>DUNGENESS and RED ROCK Crab</b>	Open year-round to all gear.  Crab fishers may fish for crab in Oregon waters under Oregon rules and land into Washington ports of the Columbia River. A resident license from either state is required.
<b>PACIFIC OCEAN</b> Grays Harbor, Willapa Bay, and Marine Areas 1-3 and 4 (west of Bonilla-Tatoosh line)	<b>DUNGENESS and RED ROCK Crab</b>	Open December 1 to September 15 for Pot Gear. Open year-round to other gear.

### Dungeness Crab



White-tipped claws, brownish shell

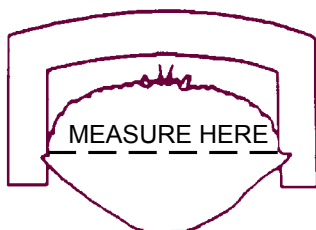
### Red Rock Crab



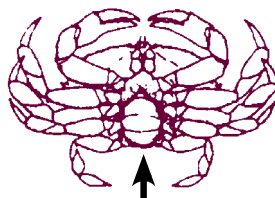
Black-tipped claws, reddish shell, shell much wider than long

## Where and How to Measure for Minimum Size and Check for Shell Hardness

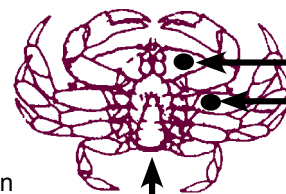
Caliper measurement at the widest part of the shell just in front of rear-most point or tips.



FEMALE  
Wide  
Abdomen



MALE  
Narrow  
Abdomen



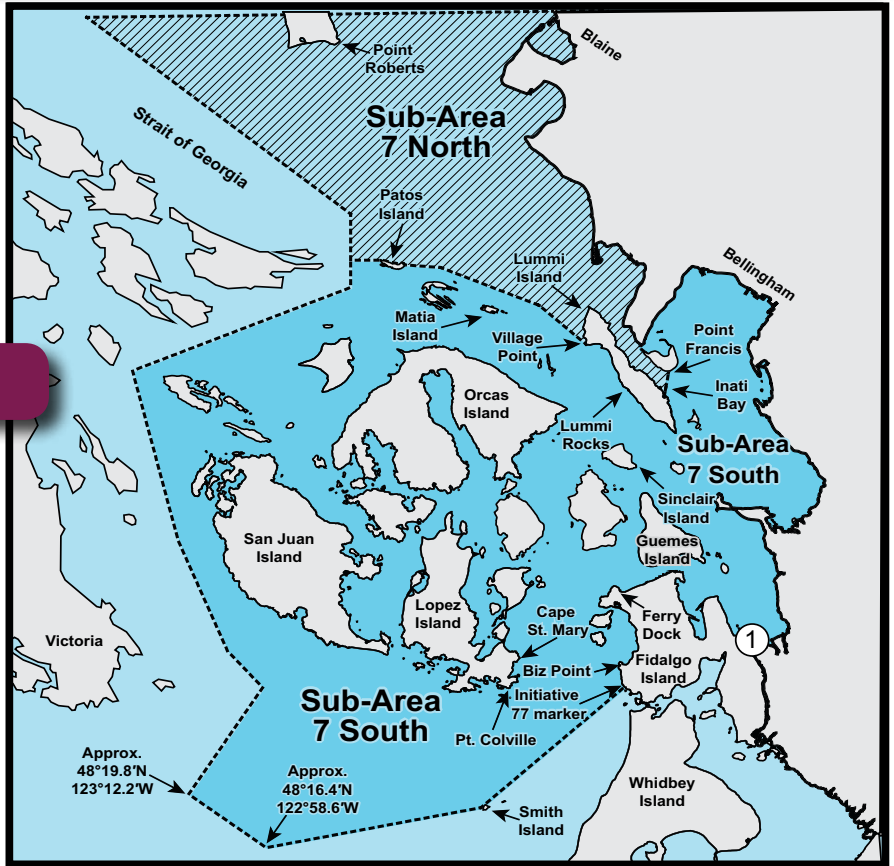
Check for soft shell here

Abdomen of female and male Dungeness

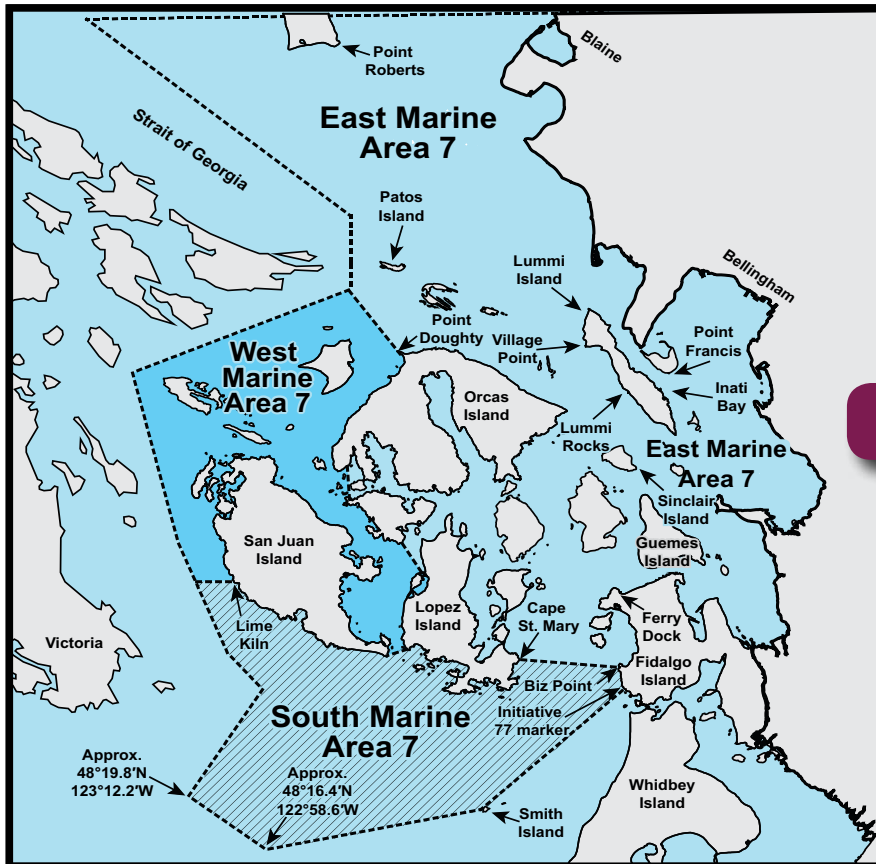
# Marine Area 7 Crab and Shrimp Maps

## Crab Map

- 1 Padilla Bay - crab fishing within 25 yards of the Burlington-Northern railroad trestles (located at the north end of the Swinomish Slough) is only allowed from one hour before official sunrise to one hour after official sunset.



## Shrimp Map



# Shrimp Rules

**SHRIMP: Spot (*Pandalus platyceros*), Coonstripe (*P. danae* and *P. hypsinotus*), Pink (*P. eous* and *P. jordani*).**

## Shrimp Daily Limits and General Rules: (See page 136 for gear rules)

**PUGET SOUND** (Marine Areas 5-13 and Marine Area 4 east of the Bonilla-Tatoosh line).

**1st Saturday in May through May 31:**

DAILY LIMIT OF 80 SHRIMP.

Shrimp heads may be removed while in the field, prior to coming ashore.

The minimum mesh size for shrimp pots is 1" mesh (see gear rules on next page).

**June 1 through October 15:**

DAILY LIMIT OF 10 POUNDS, heads and tails, of all shrimp species combined (maximum of 80 spot shrimp - if open for spot shrimp).

Shrimp heads may be removed, but must be retained while in the field, until ashore and finished fishing for the day.

The minimum mesh size for shrimp pots is 1" mesh, unless the area is closed for spot shrimp, but open for coonstripe and pink shrimp, then the minimum mesh size for shrimp pots is ½" mesh (see gear rules on next page).

In areas closed for spot shrimp, but open for coonstripe and pink shrimp, all spot shrimp caught must be returned to the water immediately.

**PACIFIC OCEAN** (Marine Areas 1-3 and Marine Area 4 west of the Bonilla-Tatoosh line).

DAILY LIMIT OF 25 POUNDS, heads and tails, of all shrimp species combined (maximum of 200 spot shrimp).

Shrimp heads may be removed, but must be retained while in the field, until ashore and finished fishing for the day.

The minimum mesh size for shrimp pots is 1" mesh (see gear rules on next page).

### ALL AREAS

Each harvester must have a separate container for their catch, either in their possession or identified with their name.

No minimum carapace size.

Maximum of two shrimp pots per person, and no more than four shrimp pots per boat.

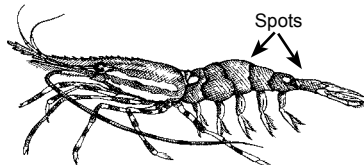
**Prior to harvesting, check the Shellfish Rule Change toll-free Hotline, (866) 880-5431, or <http://wdfw.wa.gov>, for season closures and restrictions.**

## Season Information

AREA	SPECIES	SEASON / OPEN DAYS AND TIMES / ADDITIONAL RULES
<b>MARINE AREAS 4</b> (east of Bonilla-Tatoosh line), <b>5, 6, and 13</b> (excluding Shrimp District)	ALL SPECIES	<b>Opens first Saturday in May.</b> For shrimp season open dates and times go to: <a href="http://wdfw.wa.gov/fishing/shellfish/shrimp/">http://wdfw.wa.gov/fishing/shellfish/shrimp/</a> or refer to the toll-free shellfish rule change hotline (866) 880-5431.
	COONSTRIPE and PINK ONLY	Open first Saturday in May - October 15.
<b>MARINE AREAS 7 EAST, 7 SOUTH, and 7 WEST</b> (see map on page 134)	ALL SPECIES	<b>Opens first Saturday in May.</b> For shrimp season open dates and times go to: <a href="http://wdfw.wa.gov/fishing/shellfish/shrimp/">http://wdfw.wa.gov/fishing/shellfish/shrimp/</a> or refer to the toll-free shellfish rule change hotline (866) 880-5431.
	COONSTRIPE and PINK ONLY	Marine Areas 7 South and 7 West will remain closed after SPOT shrimp quota is taken. June 1 - October 15, in Marine Area 7 East only, open daily with a 200' maximum fishing depth restriction.
<b>MARINE AREAS 8-1, 8-2, 9, 10 and 11</b>	ALL SPECIES	<b>Opens first Saturday in May.</b> For shrimp season open dates and times go to: <a href="http://wdfw.wa.gov/fishing/shellfish/shrimp/">http://wdfw.wa.gov/fishing/shellfish/shrimp/</a> or refer to the toll-free shellfish rule change hotline (866) 880-5431.
	COONSTRIPE and PINK ONLY	Marine Area 10 will remain closed after SPOT shrimp quota is taken. June 1 - October 15, Marine Areas 8-1,8-2, 9 and 11 are open daily for COONSTRIPE and PINK shrimp with a 150' maximum fishing depth restriction.
<b>HOOD CANAL SHRIMP DISTRICT</b> (Marine Area 12)	ALL SPECIES	<b>Opens first Saturday in May.</b> For shrimp season open dates and times go to: <a href="http://wdfw.wa.gov/fishing/shellfish/shrimp/">http://wdfw.wa.gov/fishing/shellfish/shrimp/</a> or refer to the toll-free shellfish rule change hotline (866) 880-5431.
<b>DISCOVERY BAY SHRIMP DISTRICT</b> (see Marine Area 6 Map)	ALL SPECIES	<b>Opens first Saturday in May.</b> For shrimp season open dates and times go to: <a href="http://wdfw.wa.gov/fishing/shellfish/shrimp/">http://wdfw.wa.gov/fishing/shellfish/shrimp/</a> or refer to the toll-free shellfish rule change hotline (866) 880-5431.
<b>PACIFIC OCEAN</b> Marine Areas 1-3 and 4 (west of Bonilla-Tatoosh line)	ALL SPECIES	<b>Year-round.</b> Open daily. Note: Pacific Ocean shrimp grounds are located a considerable distance from shore (30 miles or more) and as a result are generally inaccessible by the casual sport fisher.

### Spot Shrimp

(*Pandalus platyceros*) are distinguished by four white spots on the body. Spot shrimp may reach 10" in total length.



### Coonstripe (Dock) Shrimp

(*Pandalus danae*) are brownish in color with brown lines and spots on the head and tail. This species may grow to 5½" in length.

### Pink Shrimp

(*Pandalus eous* and *P. jordani*) are small (less than 6") and uniformly pink.



### Coonstripe (Humpback) Shrimp

(*Pandalus hypsinotus*) is mottled reddish-brown with some white patches on the head and tail. This species may reach 7½" in length.



# Statewide Gear Rules - Crab, Shrimp and Crawfish

## Caution

The requirements below are the minimum established by law. At some locations currents may require the addition of weights to traps and the use of additional buoys to prevent the equipment from being lost. Refer to the individual species listings (crab, page 133; shrimp, page 135; and crawfish, page 131) for seasons and other harvest rules.

### GENERAL GEAR RULES:

May be harvested by hand or dipnet. Hand operated instruments may not penetrate the shell. One star trap, one ring net, or one pot is considered one unit of gear. The maximum number of units of gear that may be fished per person is:

**Puget Sound:** (Marine Area 4, east of the Bonilla-Tatoosh line, and in Marine Areas 5-13).

**Shrimp:** Two pots per person, and no more than 4 shrimp pots may be onboard or fished by any one boat at a time.

**Crab:** Two units of crab gear per person, and no limit on the number of units of crab gear per boat.

**Coastal Waters:** (Marine Areas 1-3 and in Marine Area 4, west of the Bonilla-Tatoosh line). Two units of crab and/or shrimp gear per person. Exception: Columbia River - three units of crab gear per person.

**Freshwater:** Crawfish: Five units of gear per person.

Every shellfish pot, ring net, or star trap left unattended in Washington waters must have its own buoy line and a separate buoy that is permanently and legibly marked with the operator's first name, last name, and permanent address (telephone number is voluntary). It is **ILLEGAL** to set or pull unattended shellfish gear with a buoy that does not have your name on it, and only one name and address may appear on each buoy. Any angler may assist the person whose name is on the buoy while he or she is pulling the pot. No fisher may set, or pull shellfish gear from a vessel, in Catch Record Card Areas 1-13, from one hour after official sunset to one hour before official sunrise. **All shellfish gear must be removed from the water on closed days.**

Buoys must be constructed of durable material (no bleach, antifreeze, detergent bottles, paint cans, etc.) and must be visible on the surface at all times except during extreme tidal conditions. Personal flags and staff, if attached to buoys, can be of any color. Buoy lines must be weighted sufficiently to prevent them from floating on the surface.

All crab, shrimp, and crawfish pots must be equipped with a biodegradable device (rot/escape cord) and shall include one or more of the following:

- (1) securing the pot lid hook or tie down strap with a single loop of cord; or
- (2) sewing a 3" by 5" escape panel in the upper half of pot closed with cord; or
- (3) attaching the pot lid or one pot side (serving as a pot lid) with no more than three single loops of cord.

Cord used must be untreated 100% cotton or other natural fiber no larger than thread size 120 ( $\frac{1}{8}$ "). This cord, when attached as described above, must be able to rot away and allow crab, shrimp, crawfish and fish to escape freely if the pot is lost. A derelict crab pot without proper escape cord can attract and kill crabs for years after the pot has been lost.

### CRAB GEAR:

The minimum mesh size for crab pots is  $1\frac{1}{2}$ ", and all pots must have two  $4\frac{1}{4}$ " minimum inside diameter escape rings in the upper half of the pot, except in the Columbia River where the minimum ring size is 4" inside diameter.

All parts of ring nets and star traps must lie flat on the sea bottom and may not restrict free movement of crab until lifted. Shellfish pots must be covered by water at all times while being fished.

Crab pots must not exceed 13 cubic feet.

All crab gear buoys must be half red and half white in color, and both colors need to be visible when fishing.

### SHRIMP GEAR:

Pots must be constructed of either flexible or rigid mesh material (no liners allowed).

Entrance tunnels can be made of any size mesh material but must be located on the sides of the pot. The sum of the maximum tunnel widths must not exceed one-half the perimeter of the bottom of the pot.

Shrimp pots must not exceed 10 feet in perimeter and 18" in height.

All shrimp pot buoys must be yellow in color.

### SHRIMP POT MESH SIZE:

#### 1" Minimum Mesh Size

A  $\frac{7}{8}$ " square peg must be able to pass through each mesh opening – see diagram, except for flexible (web) mesh pots, where the opening must be a minimum of  $1\frac{1}{4}$ " stretch measure.

#### Puget Sound:

Required for all shrimp pots during the month of May.  
Required in all areas open for spot shrimp after June 1st.

#### Pacific Ocean:

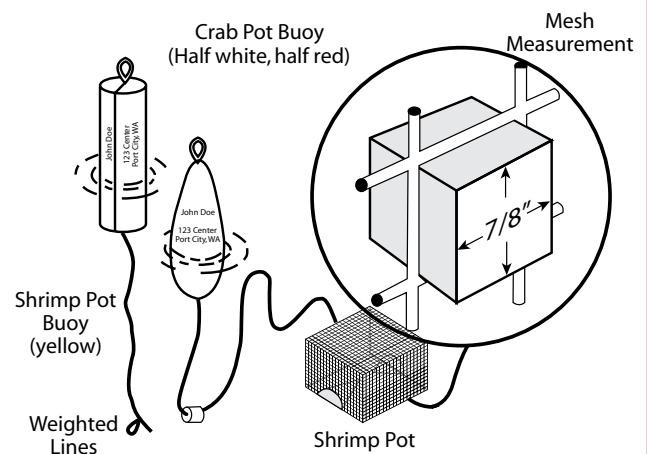
Required year-round.

#### 1/2" Minimum Mesh Size

A  $\frac{3}{8}$ " square peg must be able to pass through each mesh opening, except for flexible (web) mesh pots, where the opening must be a minimum of  $1\frac{1}{2}$ " stretch measure.

#### Puget Sound:

Allowed after June 1st in any area closed for spot shrimp, but open for coonstripe and pink shrimp.



### LOST GEAR:

Report lost or stolen shellfish gear online at [http://wdfw.wa.gov/enforcement/lost\\_gear/](http://wdfw.wa.gov/enforcement/lost_gear/). Notify WDFW Enforcement Program before attempting to salvage lost gear during season closures - (360) 902-2936.