



# Game Management Unit 334 - Ellensburg

2021 - 2022 Hunting Season

WA Department of Fish and Wildlife (WDFW)  
Administrative Areas

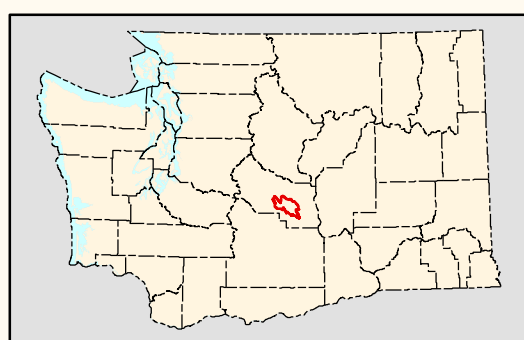
- 2021-22 Game Management Unit
- WDFW Wildlife Area
- WDFW Water Access Area

- |   |   |
|---|---|
| <b>Public Land Survey System (Township and Range)</b>                                 | <b>Other Major Public Land Ownership</b>  |
| <ul style="list-style-type: none"> <li>Township Line</li> <li>Section Line</li> </ul> | <ul style="list-style-type: none"> <li>Federal - Forest Service</li> <li>Other Federal Land</li> <li>State - DNR</li> <li>Other State Land</li> <li>Municipal Land</li> </ul> |
| <b>Political Boundaries</b>   |   |
| <ul style="list-style-type: none"> <li>County Line</li> <li>City Limits</li> </ul>    |   |

- |  |  |
|--|--|
| <b>Roads</b>   | <b>Hydrography</b>   |
| <ul style="list-style-type: none"> <li>State Route</li> <li>Local Road (Unimproved to Paved)</li> <li>Wheel Drive Trail</li> <li>Pipeline</li> <li>Transmission Line</li> <li>Railroad</li> <li>Elk Fence</li> </ul> | <ul style="list-style-type: none"> <li>Annual River or Stream</li> <li>Intermittent Stream</li> <li>Canal</li> <li>Lake, Wide River, or Ocean</li> </ul> |

0 1 2 3 4 5 6  
Miles

1:100,000  
Map Ratio



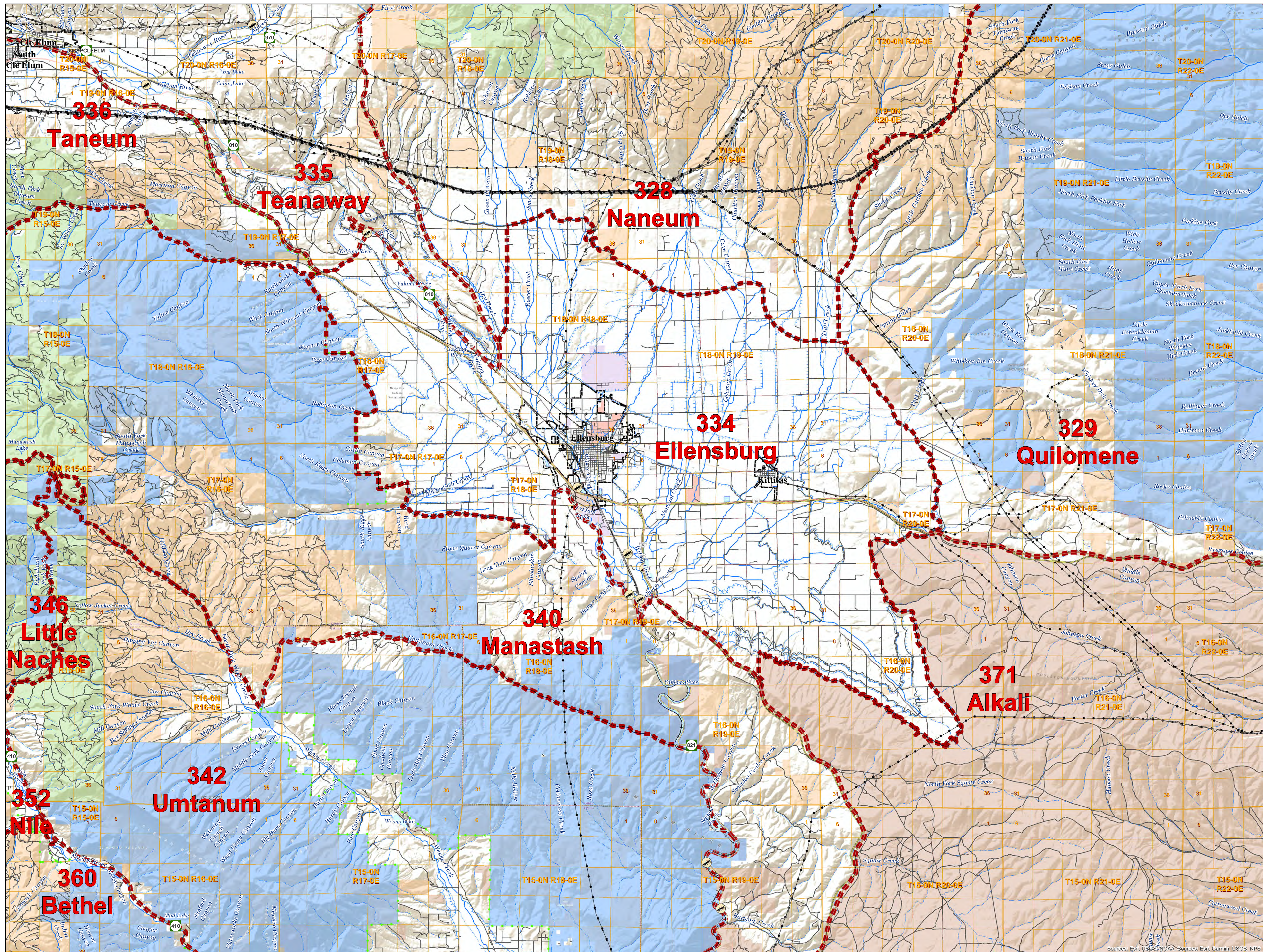
- Sources of Information –
- Game Management Units
  - WA Department of Fish and Wildlife; Wildlife Program (2020)
  - Land Ownership
  - WA Department of Natural Resources; Resource Mapping Section (2020)
  - Political and Survey Boundaries
  - WA Department of Natural Resources; Land Survey Section (2020)
  - Transportation and Utilities
  - WA Department of Transportation (2017)
  - US Geological Survey; National Mapping Division (1989)
  - City Limits
  - WA Department of Transportation (2011)
  - Hydrography
  - WA Department of Fish and Wildlife; Fish Program (2020)
  - Delorme Publishing Company; Washington Atlas and Gazetteer (2006)

### DISCLAIMER

Due to the dynamic nature of data and the need to rely on outside sources of information the Washington Department of Fish and Wildlife cannot accept responsibility for errors or omissions in the data and information contained in this product. There are no warranties that accompany the maps and information contained in this product. For legal definitions of hunting regulations, seasons, and boundaries, the user should refer to Chapters 220-410-01 thru 220-410-06 of the Washington Administrative Code (<http://www.leg.wa.gov/wac/>)



Map Published April 2021



Sources: Esri, USGS, NOAA, Sources: Esri, Garmin, USGS, NPS